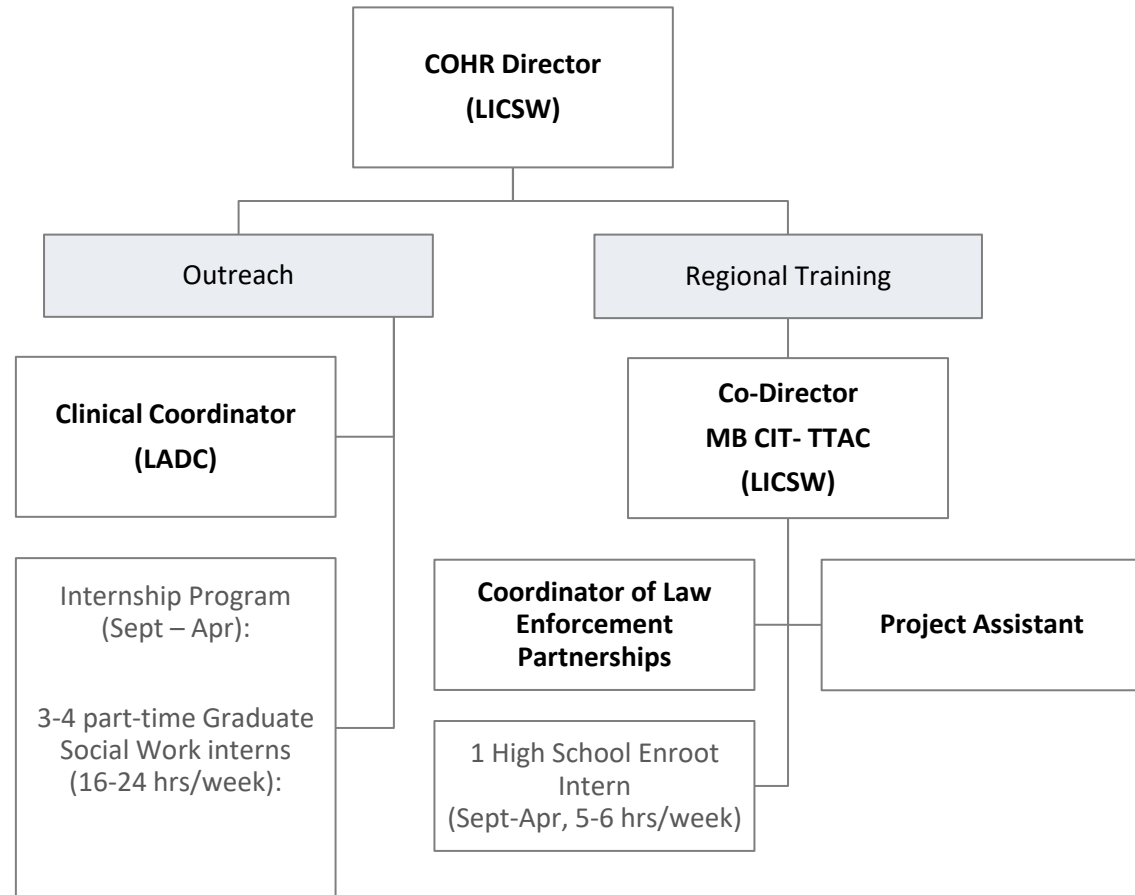


COHR: Community Outreach, Help, and Recovery

COHR is a behavioral health unit designed to provide an ***integrated health and public safety*** response.

COHR is a low bar access service.

We work both independently and in collaboration with officers to connect with residents to provide supports and diversion from the criminal justice system.



Key Elements of COHR

Community Outreach & Direct Service

- Clinical supports and care coordination
- Jail diversion
- Access to Detox
- Coordinated Wellness Checks
- Library Outreach/Kent St. Outreach
- Trainings for community and service providers related to Mental Health, Recovery, De-escalation and Trauma Informed Approaches.

Overdose After Care Team

- Partner with ACCESS to visit places where an overdose occurred to provide narcan and community resources.

Quarterly Stakeholder Meetings

Crisis Intervention Team Training and Technical Assistance Center (CIT-TTAC)

- Regional hub serving 58 police departments



CBHC & MCI North Suffolk



Crisis Intervention Team (CIT) Training & Technical Assistance Center

- 58 police agency partners
- 40 hour CIT training includes:
 - Understanding behavioral health
 - Implicit bias and race
 - Verbal and tactical de-escalation
 - Navigating community resources
 - Risk assessment tools
- Advanced Training
 - Blue Courage
 - Whole Health Resiliency
 - Recovery Coach Academy
 - Advanced De-EscalationCrisis Negotiation
 - Mental Health First Aid
- President Obama's 6 Pillars of 21st Century Policing
 - Building Trust and Legitimacy
 - Policy and Oversight
 - Technology and Social Media
 - Community Policing and Crime Reduction
 - Officer Training and Education
 - Officer Safety and Wellness
- 85% of SPD have completed CIT training