

Gilman Square

MAKING A PLACE FOR THE PEOPLE OF GILMAN SQUARE TO LIVE,
WORK AND PLAY

GSNA Mission and Values

Gilman Square Neighborhood Association's Mission is to provide a platform for the people of Gilman Square to

- Connect as a community
- Share neighborhood news
- Advocate for our common values to make Gilman Square the best place in the world to live, work and play.

WELCOMING:

- We value a neighborhood that promotes a diverse and welcoming community of neighbors.

SAFE:

- We value a neighborhood where it is safe and enjoyable to walk, bike, play, work and sleep every day

COMPLETE:

- We value diverse and sustainable local businesses that meet the neighborhood's needs

CONNECTED:

- We value a neighborhood that supports affordable, reliable mass transit and complete streets that promote an environmentally sustainable urban community

BEAUTIFUL AND FUN:

- We value a neighborhood where we as a community have a prominent say in what happens in our neighborhood, where our voices are heard and our neighbors interests are supported

Where we started (December 2018)

We are a group of Gilman Square residents with a background in architecture, engineering, and design.

A few things have changed since the Gilman Square Neighborhood Plan was created

Goals are to **tweak the Neighborhood Plan in order to expand the location of the square**

- Urban, Lively streetscape
- Meets the goals of the neighborhood
- Meets the objectives of the city
- A civic space that is a destination for the community



Community Outreach (January-July 2019)

Expanded our design efforts to include GSNA and other neighbors

- Design Goals and Neighborhood Master Plan Visioning Mtg
- Homan's Building Site Design Charrettes
- Discussed green space and open space concepts throughout the square
- Co-hosted brainstorming session at Community Meeting



Visioning and Design Criteria Findings

■ WELCOMING

- Easy access
- Open stores w/ big windows, plaza, archs
- Engaging storefronts
- Clean air
- Space where you can stop & stay
- Accessibility
- Edible plants
- Scale of bldg. to open space
- Lots of stores
- Spaces to sit and enjoy the space
- Welcoming views from Medford and School St.
- Street Fairs
- Culturally informed design
- More housing options of type and affordability
- Welcome sign
- Area for people of all ages to coexist
- GSNA block party

■ SAFE

- Better lighting
- Wide walkways
- People active in the space
- Buffer from street or transit
- Visible / Open
- Calm Traffic – European style sidewalks at same level as street
- Park / Civic Space viewable from road
- Good lighting at night that is down facing to avoid light pollution
- Not a parking lot or an abandoned lot
- Separated bike / scooter infrastructure to/from community path
- Shorter distance between crosswalks for students, families, etc
- Accessible to all (sidewalks, slopes, etc)

Visioning and Design Criteria Findings

■ COMPLETE/LOCAL

- Small scale shops (IE: Bow Market) economically accessible to new businesses
- Connections (visual & physical) btw School & Marshall St.
- No large corporate stores in heart of Gilman Square
- Support & Promote local Gilman artists (performance & visual)
- Rooftop garden /community garden
- Space for local business pop-up (food trucks, stores, and events)
- More housing / More affordable housing

■ CONNECTED

- Wide sidewalks for pedestrians and trees
- Bike lanes and bike parking on street (Medford)
- Trees on sidewalks for shade in summer
- Places for people to informally congregate (IE: seating areas, small pocket parks)
- Outdoor food / beverage
- Coffee shops, beer garden, lunch places
- Bike path accessibility
- Safe lanes and infrastructure for bikes to and from the path
- Parking/drop off fro bikes, cares, rideshares for T-stop
- Engaging space where people want to stay
- Control over local storefronts
- Views
- 2 levels of markets to make a connection from Gilman square to T station seamlessly and indoors – this could take advantage of topography and celebrate it
- Commercial space near transit (IE: coffee shop next to T-enry)

Visioning and Design Criteria Findings

■ BEAUTIFUL/FUN

- Ground cover that is low maintenance
- Edible greenery
- Large format games
- Seating / tables
- Space for art (IE: Murals)
- Shaded but also sunny
- Trees
- Art
- Playful landscape
- Outdoor restaurant seating
- Intricate / interesting architecture
- Underground utilities
- Lawn on D
- More than 1 activity
- Artwork from local artists
- Playful seating
- Human scaled streetscapes
- Areas for winter and summer holidays/festivals
- Access to natural light

■ GREEN/OPEN SPACE

- Garden / green space community can own (growing center)
- Local business owned farm / programming for community
- Indoor / outdoor space for all seasons
- Ready built fireplace
- Sit outside at café / restaurant
- Plant greenery on soundwall
- Community garden
- Ability to reroute traffic so Sq is pedestrian only for fairs/festivals
- Outdoor market
- Pollinator garden
- Natural light appropriate to season
- View of Central Hill
- Space for rotating markets (IE: Bryant park)
- Tot lot
- Multiuse space (IE: used for yoga, etc)
- Shade in summer/ Sun in winter
- Seating areas
- Winter garden
- Dog friend areas – waste bag stations
- Roof top access
- Inspired by nature (IE: Rain garden, roof runoff, irrigation)

What the community thinks is missing

- We Work
- Offices
- Multipurpose Spaces
- Dry Cleaner / Wash and fold
- Convenient Store (Locally owned)
- Funeral Home
- Recreation Center
- Small Arthouse Theater
- Dance / Art / Music Studios
- Rehearsal Space
- Music Venue
- Comedy Club
- Grocery Store (Neighborhood Produce) Expansion
- Liquor/Beer Store
- Store for meats, cheese, milk
- Clover Food Labs
- Beer Garden
- Cafes / Coffee
- Restaurants
- Sub Shop
- Bakery w / sweets
- Movies in the park
- Splash Pond / Fountain
- Skateboard Park
- Parking
- Bike Parking
- Rideshare programs (Zip car)
- Green Space that supports local ecology
- Green roofs
- Neighborhood defining plaza

Existing Circulation Patterns



Current circulations patterns force:

- Pedestrians to have to circulate around the site on narrow, steep-sloped sidewalks
- Dangerous interactions with pedestrians, bicyclists, and motor vehicles
- Makes the hill a barrier

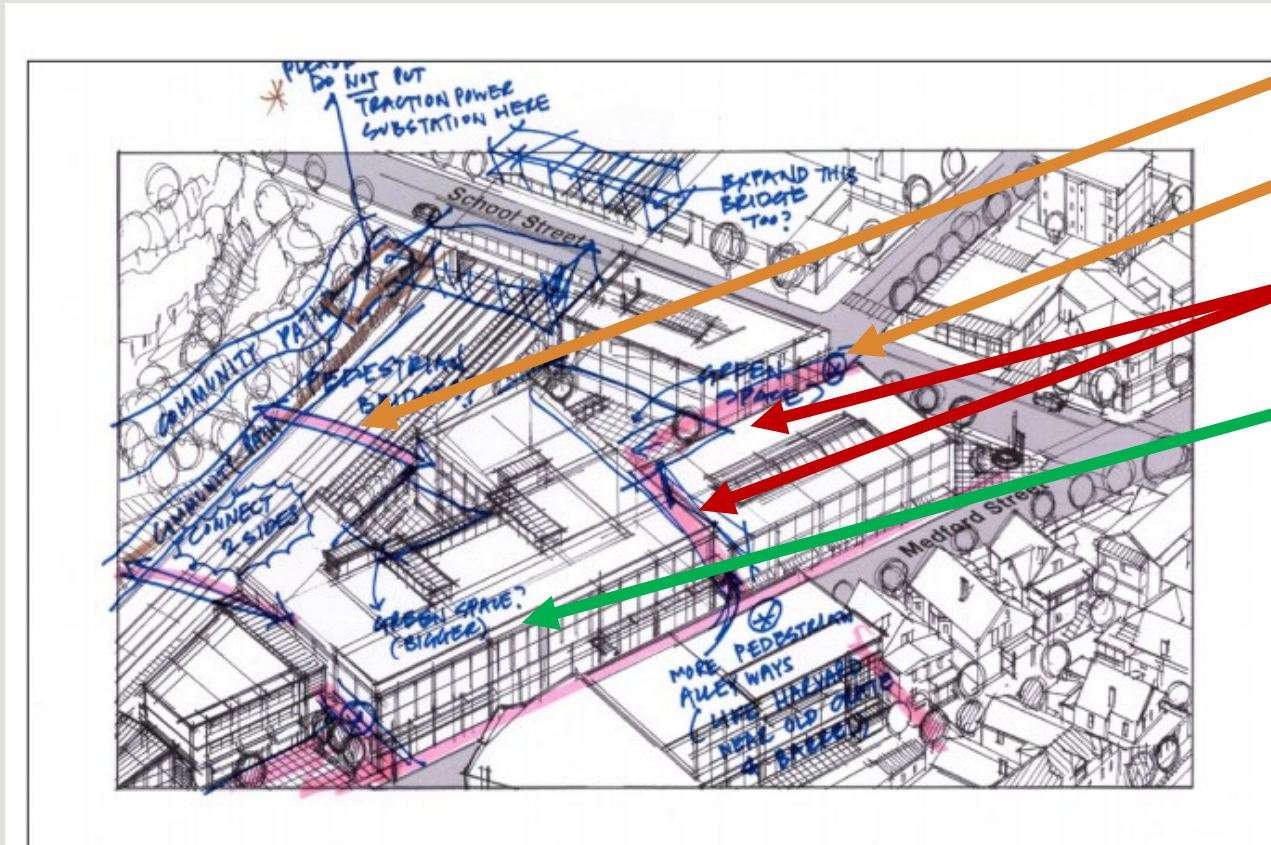
Proposed Circulation Patterns



Proposed Circulation patterns:

1. Provides pedestrian connection between Richdale and Pearl St
 - Provides foot traffic for businesses
 - Provides separate, safer, green route for pedestrians if they chose
- Provides pedestrian route through Gilman Sq to train platform
 - Provides foot traffic for businesses
 - Bridges barriers of hill using building elevators

An Expansion of Ideas from Original Neighborhood Plan



Better Pedestrian Crossings

Connection From Richdale Ave

More Pedestrian Alley Ways like in Harvard Square

More Green and Open Space??? **We Say Yes!**

Proposed Concept



Proposed circulations patterns allow for:

- 22,000SF of green space
 - Grassed area
 - Tree cover & gardens
 - Fountain/water feature
 - outdoor paved civic space for retail, restaurants, cafes, commercial, etc

40,000 SF of building footprint

A glass pavilion for market and/or other entertainment

Wide, tree-lined sidewalks

Utilizes public elevator in building development for accessible access to train platform

An Expansion of Ideas from Neighborhood Plan



Adjust the Design to account for a New location of the T

Connection From Richdale Ave

More Pedestrian Alley Ways like in Harvard Square

More Green and Open Space??? **Yes!**

Better Pedestrian Crossings

Provide a relief from the Street wall to signify an place of importance to the community

An Expansion of Ideas from Neighborhood Plan

Glass Pavilion:

- Used for popup businesses, artist stalls
- Enclosed and heated in winter
- Open in Summer



3D Model Images



Retail on first floor of all buildings provide places for people in Gilman Square to go when they get off/on the train and encourages visitors

Commercial office space on second and third floors provide more jobs in Somerville

Creating 18 hour activity

Places for people to sit outside and enjoy the company of their neighbors

3D Model Images



Reconnect Richdale with the fabric of the square through pedestrian only tree-lined corridor

Increase density smartly and with sensitivity to the site and goals of the community and neighborhood

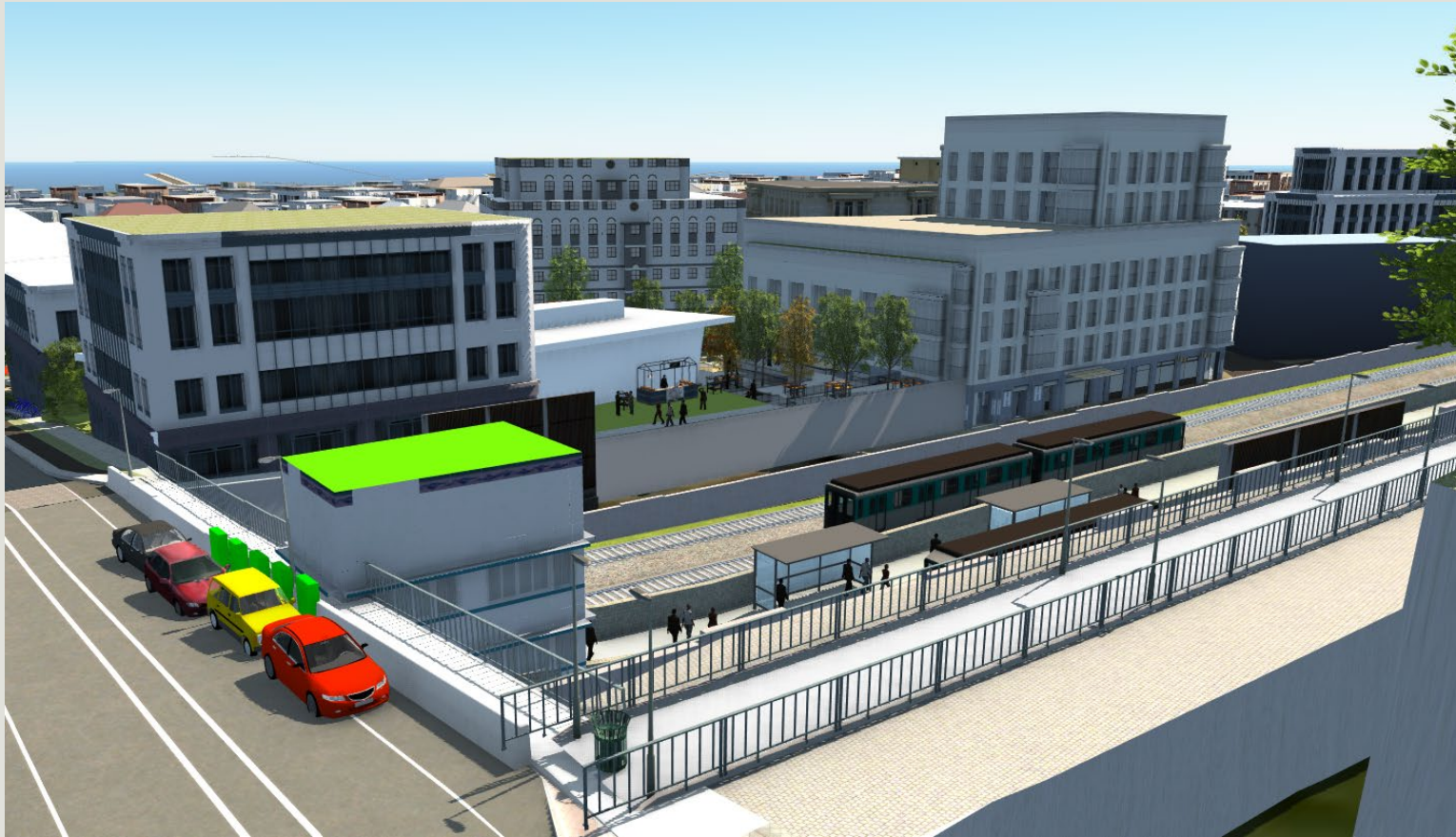
3D Model Images



Create a reprieve from the busy vehicular traffic that is welcoming, safe and energized

The community is missing trees, this square allows for the planting of lots of trees that will thrive away from the more heavily paved streets

3D Model Images



View from top of school street hill/city hall:

Create a centralized accessible entrance to the train platform through a public atrium accessed from the square and connecting to the community path.

This bridges the barrier of central hill for pedestrians and cyclists

3D Model Images



3D Model Images



Street level, School at Medford

3D Model Images



Street level at School and
Medford

Streetscape on Medford St

