

# COVID-19 Update

December 17, 2020

# Agenda

1. School reopening update
2. COVID-19 data update
3. ICS Update
4. New surge mitigation: reopening rollback + proposed economic relief package
5. COVID-19 budget (Jan-Mar)

# School Reopening Update

# Building Completion Update

- ▶ Contracts awarded; work started
- ▶ Initial contractors' schedules indicated completion dates of April 2021, citing long lead times for equipment and materials
- ▶ City aggressively worked with contractors and suppliers for critical elements, reduced lead times from 8 – 12 weeks to 2 – 3 weeks
- ▶ Contractors are revising schedules, reviewing with IAM & SPS

# Building Completion Update

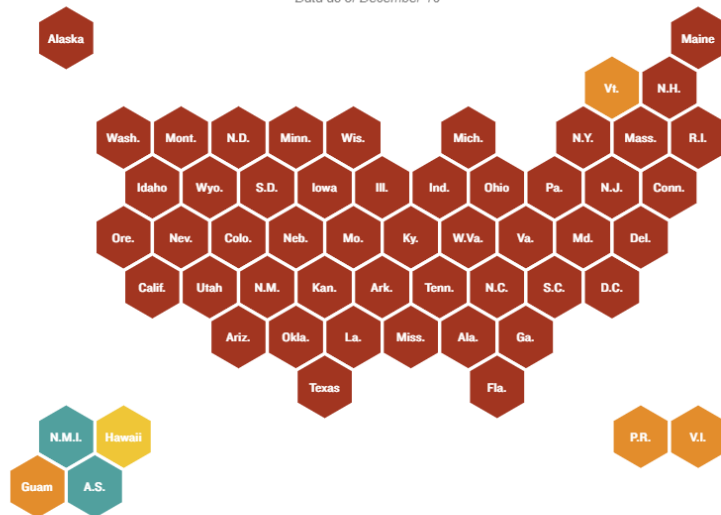
- ▶ Scope of work:
  - ▶ Minimum threshold for occupancy
    - Filtration – increase to MERV-13
    - Ventilation – retro-commission air handling equipment, handle addition pressure from filters
  - ▶ Additional work while buildings are occupied
    - Disinfection – UV germicidal irradiation
    - Humidification
  - ▶ Consistent with Harvard School of Public Health

# COVID-19 Data Update

# Daily New Cases by State (as of 12/16)

49 Places Are At The Highest COVID-19 Risk Level

Data as of December 16



RED

**Threshold:** 25+ daily new cases per 100,000 people

**Indicates:** unchecked community spread

ORANGE

**Threshold:** 10-24 daily new cases per 100,000 people

**Indicates:** escalating community spread

YELLOW

**Threshold:** 1-9 daily new cases per 100,000 people

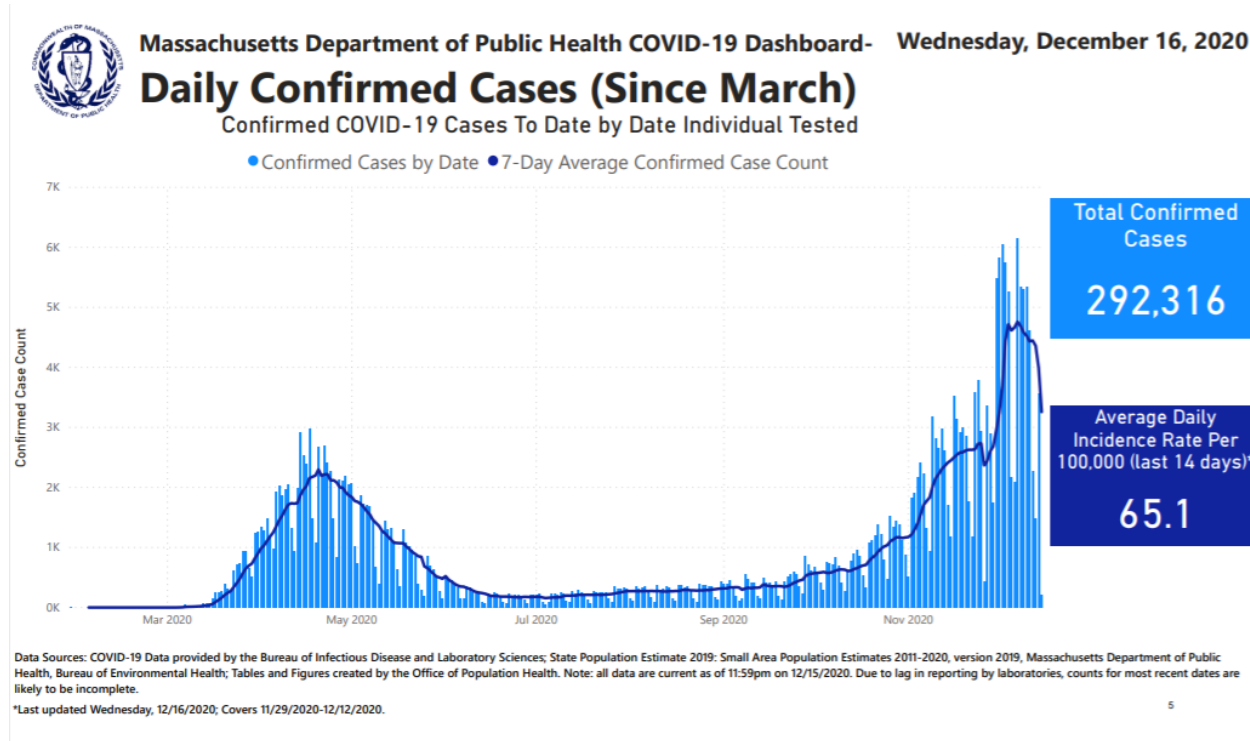
**Indicates:** potential community spread

GREEN

**Threshold:** <1 daily new case per 100,000 people

**Indicates:** close to containment

# Daily New Cases (as of 12/16)



Source: <https://www.mass.gov/doc/covid-19-dashboard-december-16-2020/download>



# Percent Positivity (as of 12/16)

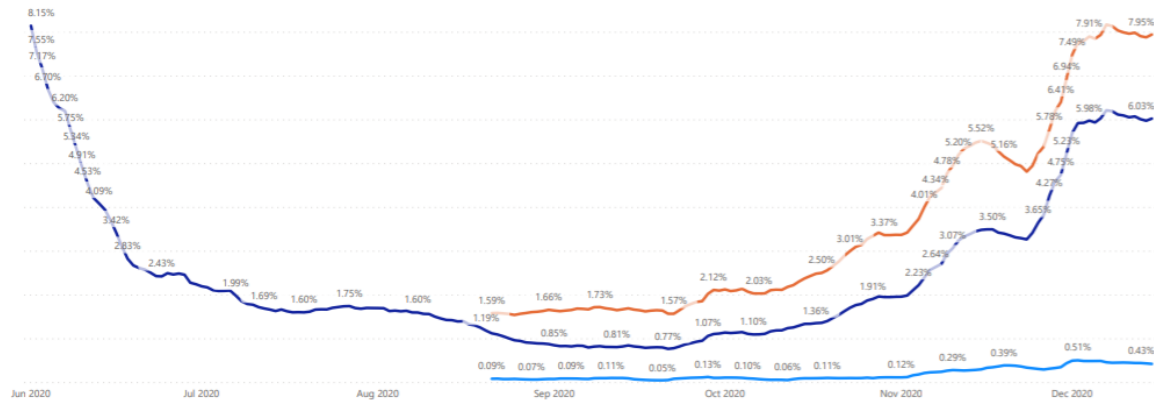


Massachusetts Department of Public Health COVID-19 Dashboard- Wednesday, December 16, 2020

## Testing by Date - Molecular (Percent Positive)

7-Day Weighted Average of Percent of Tests By Molecular Method that are Positive by Test Date

● MA Statewide (metric on p.2) ● MA Higher Education Only ● MA with Higher Education Tests Removed



Data Sources: COVID-19 Data provided by the Bureau of Infectious Disease and Laboratory Sciences; Tables and Figures created by the Office of Population Health.

Note: all data are current as of 11:59pm on 12/15/2020. Due to lag in reporting by laboratories, counts for most recent dates are likely to be incomplete. This includes individuals who have had more than one molecular test.

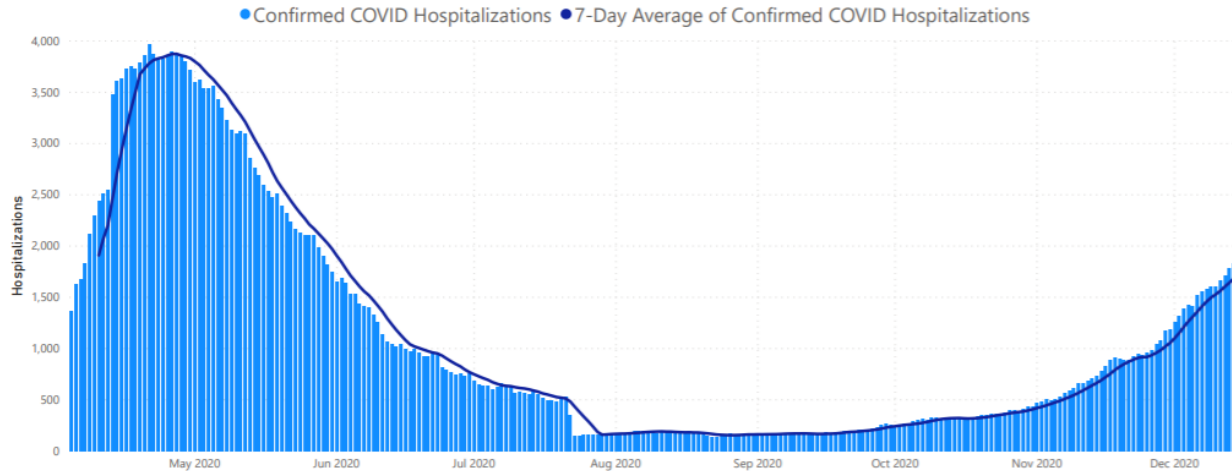
# Hospital Admissions (through 12/16)



Massachusetts Department of Public Health COVID-19 Dashboard - Wednesday, December 16, 2020

## Daily Confirmed Hospitalizations

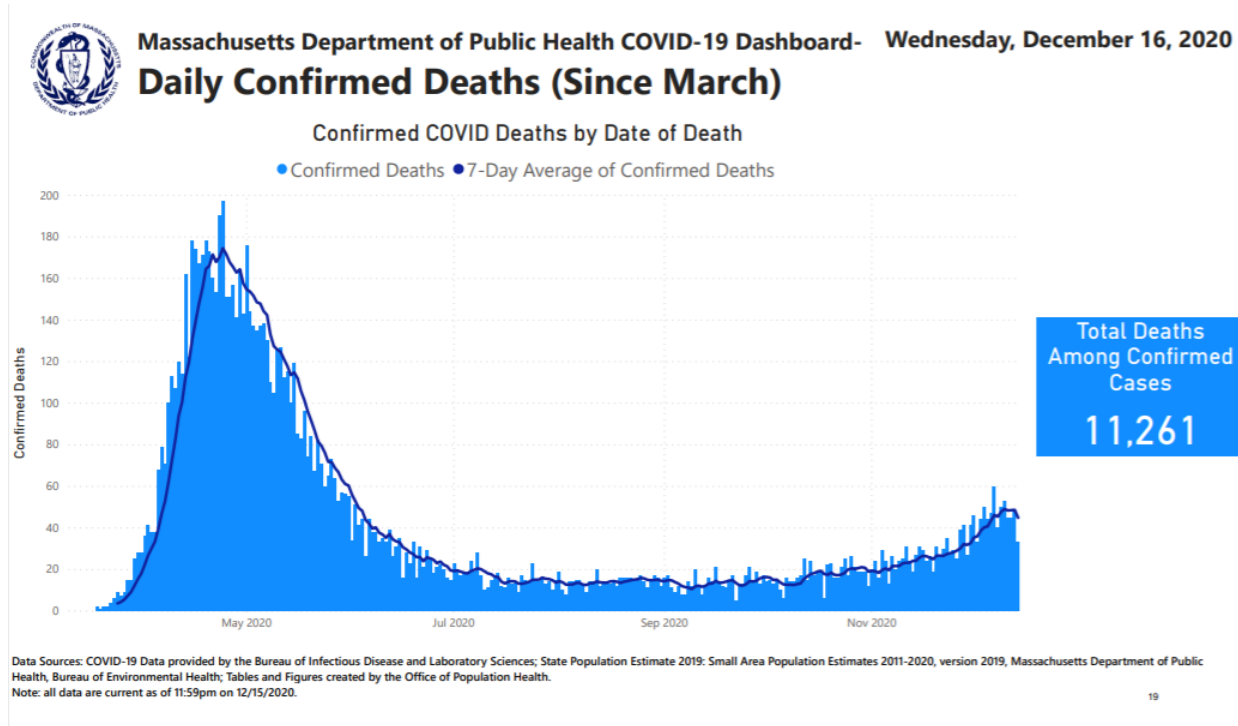
Total Confirmed COVID Patients in Hospital



Data Sources: COVID-19 Data provided by the MDPH survey of hospitals (hospital survey data are self-reported); Tables and Figures created by the Office of Population Health.

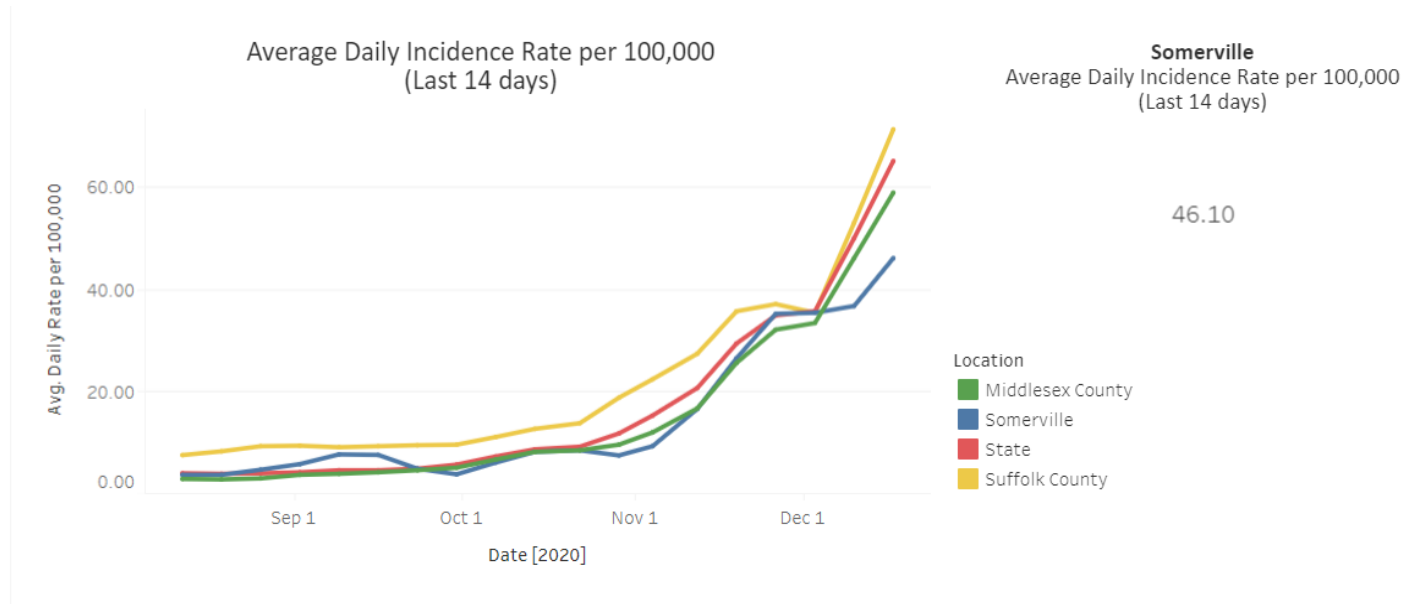
Notes: data are current as of 3:00pm on 12/15/2020. For purposes of this reporting, "confirmed" are cases with a PCR test. Hospitalization data includes alternate care sites beginning on 12/06/2020. Data prior to 07/22/2020 include both confirmed and suspected COVID hospitalizations, as confirmed COVID hospitalizations were not reported separately during this time.

# Deaths (through 12/16)



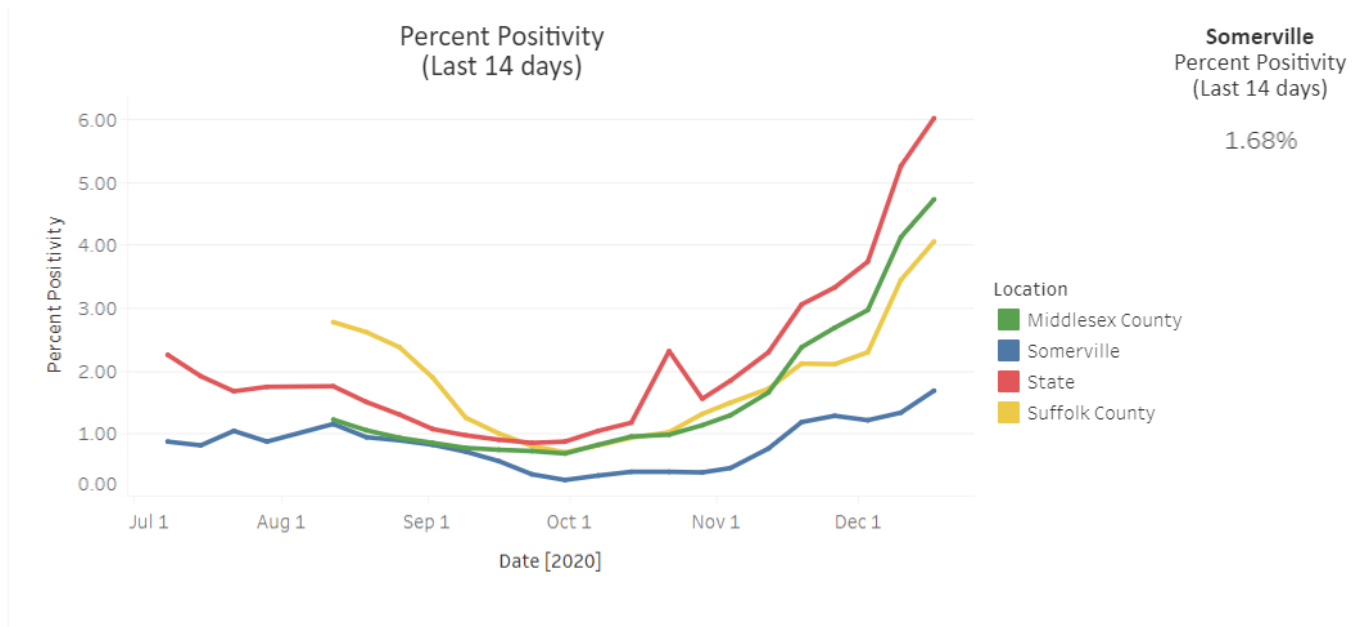
Source: <https://www.mass.gov/doc/covid-19-dashboard-december-16-2020/download>

# Average Daily Incidence (through 12/17)



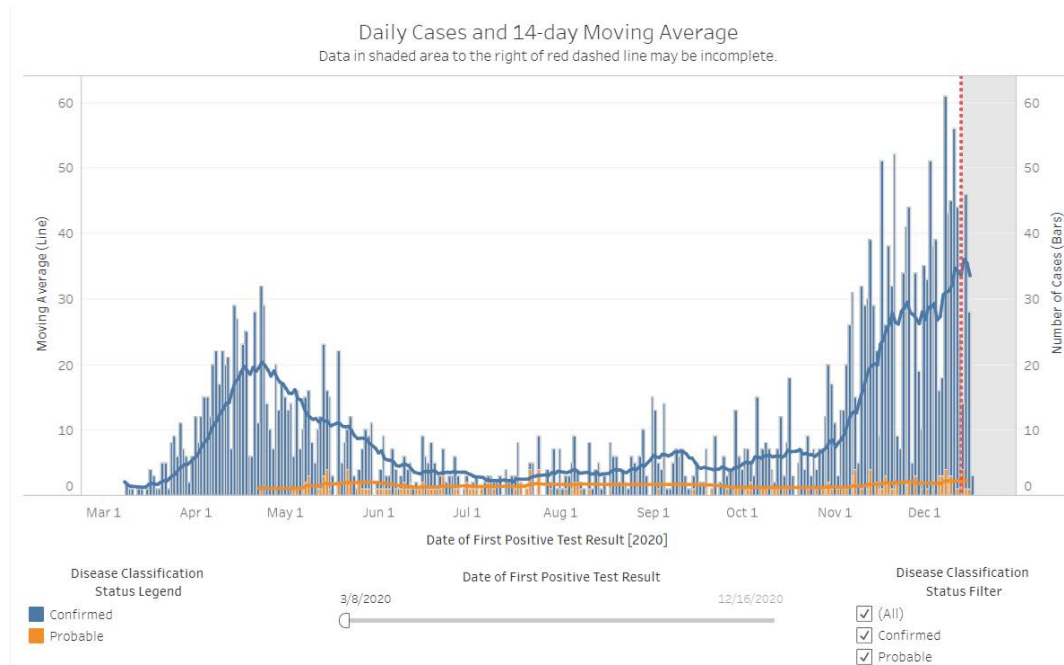
Source: <https://www.mass.gov/info-details/covid-19-response-reporting# covid-19-weekly-public-health-report->

# Percent Positivity (through 12/17)



Source: <https://www.mass.gov/info-details/covid-19-response-reporting# covid-19-weekly-public-health-report->

# Somerville Case Data: Positive Cases Identified by MDPH (through 12/17)

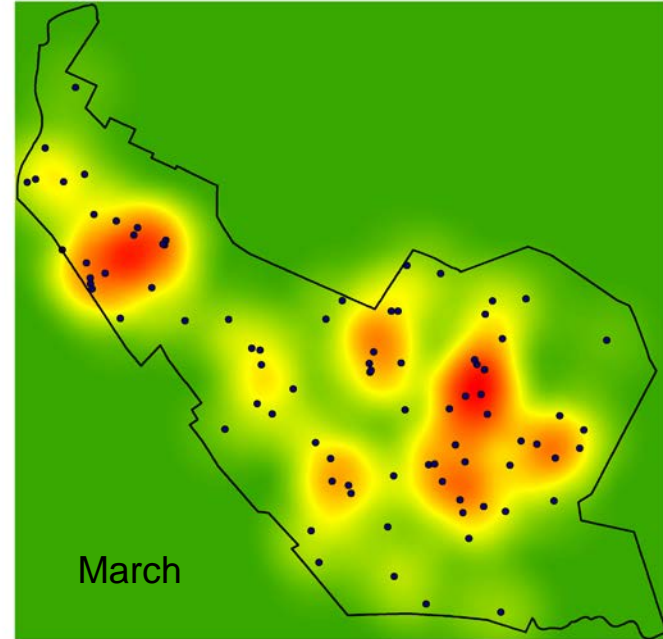


- ▶ As of Thursday, 12/17:
  - ▶ 2,748 positive confirmed cases (PCR test)
  - ▶ 178 positive probable cases (antigen or antibody)
  - ▶ 50 fatalities

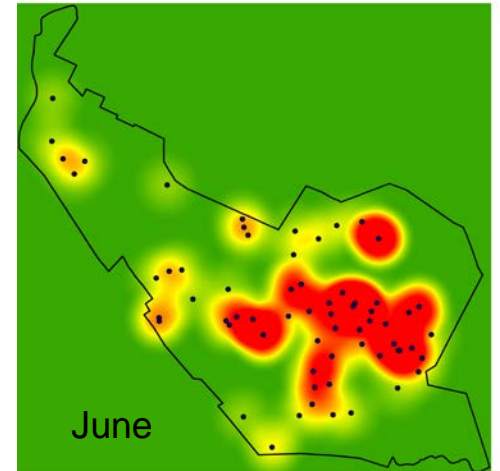
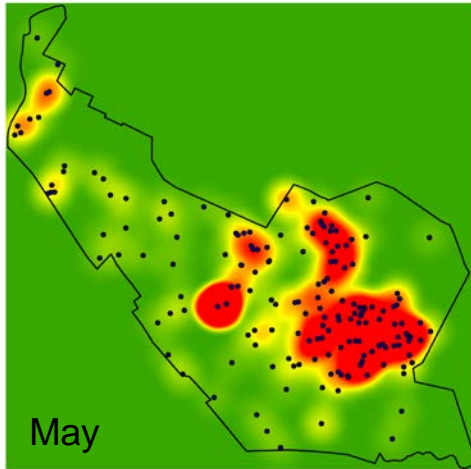
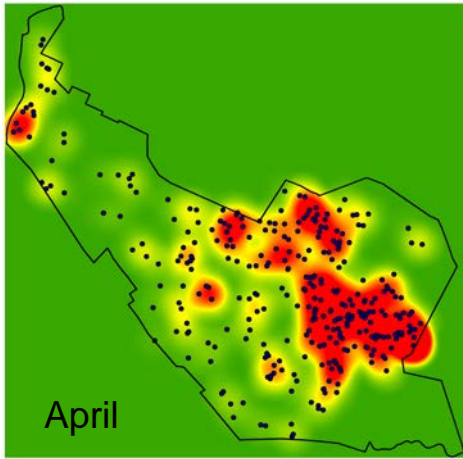
# Somerville Confirmed COVID-19 POSITIVE Cases

March - December

*Each frame is one  
month*

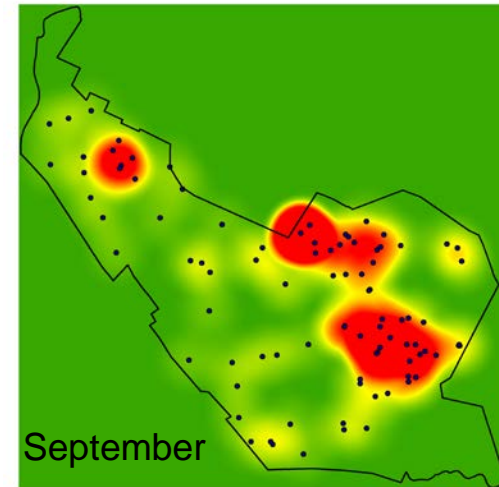
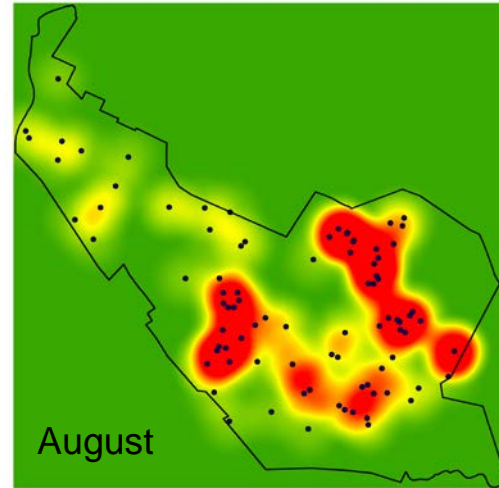
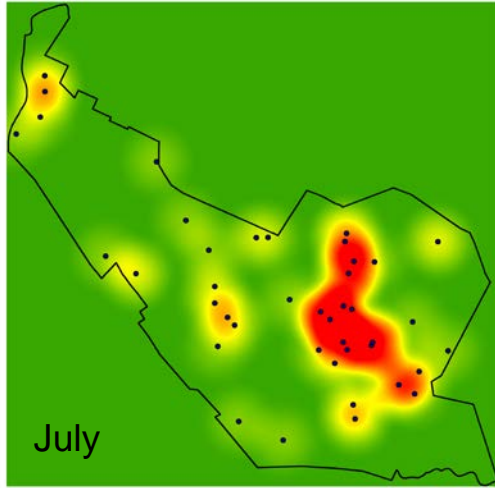


Intensity of red indicates the highest densities *within each month* and does not necessarily represent the *same density value* as the highest density in a different month.

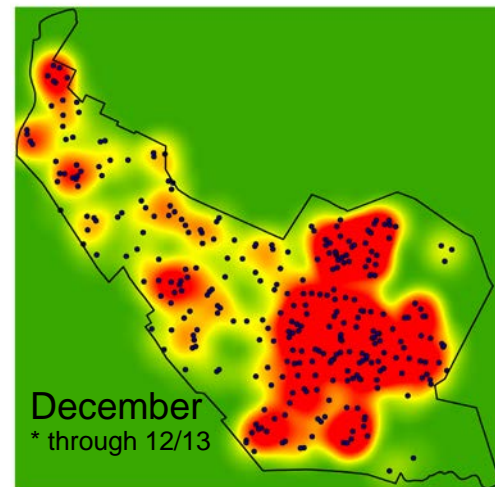
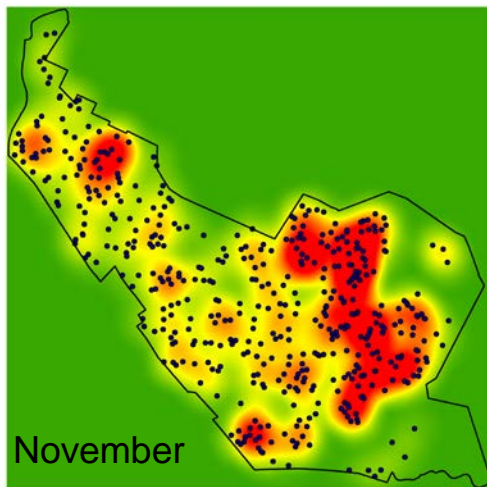
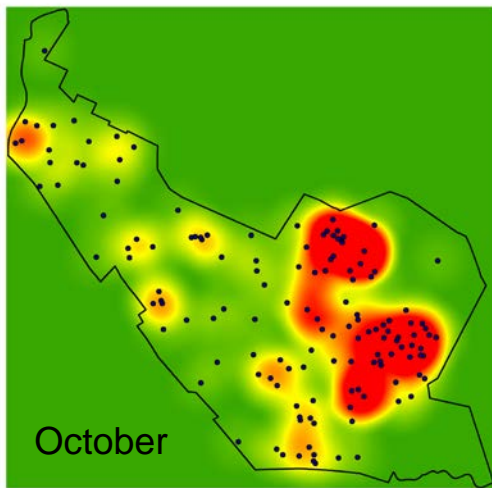


Intensity of red indicates the highest densities *within each month* and does not necessarily represent the *same density value* as the highest density in a different month.





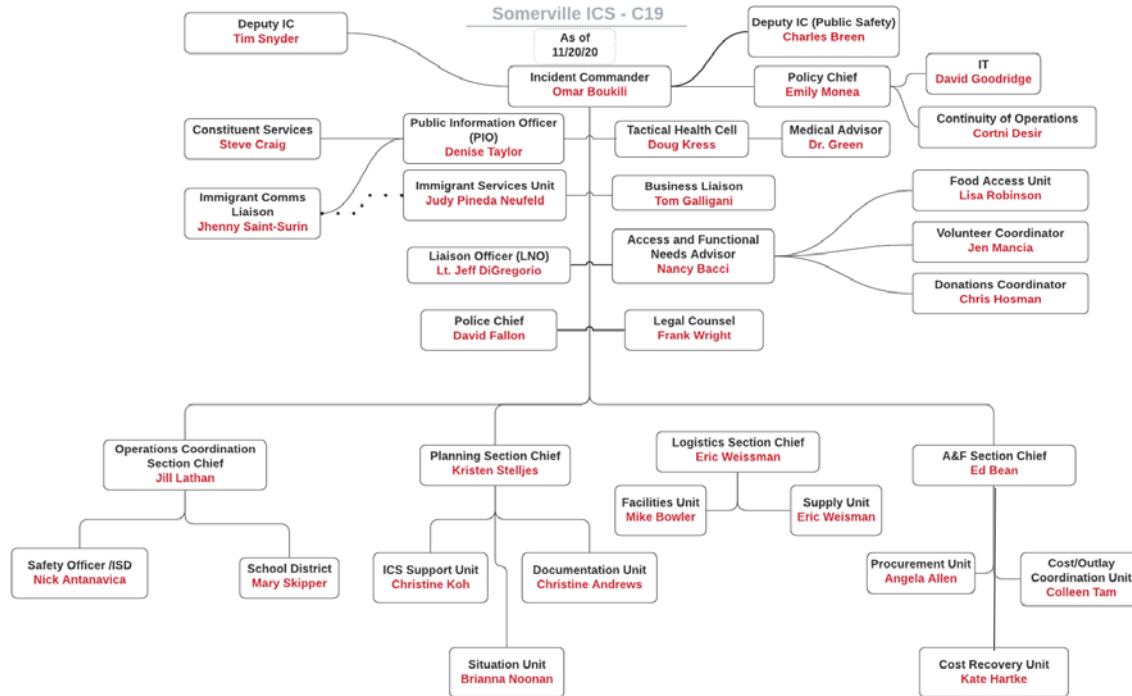
Intensity of red indicates the highest densities *within each month* and does not necessarily represent the *same density value* as the highest density in a different month.



Intensity of red indicates the highest densities *within each month* and does not necessarily represent the *same density value* as the highest density in a different month.

# ICS Update

# Incident Command System - Structure



# Examples of ICS functions

Primarily utilizing existing staff, sustain the City's response to the COVID pandemic through:

- ▶ Rapid implementation public health interventions, such as the universal face covering order, isolation and quarantine support, free community testing, issuance of health and safety guidelines for congregate living assets, implementation of transmission mitigation measures and policies, formulation and implementation of phased reopening, as well as the Shared Streets initiative
- ▶ Acquisition, monitoring, and distribution of PPE to support operations and residents
- ▶ Development of funding programs, technical support, and other strategies to support local businesses and residents financially impacted by the pandemic
- ▶ Development of identification, tracking, and visualization tools and procedures to highlight and analyze relevant local data, such as the COVID-19 dashboard
- ▶ Rapid expansion of services and sustained communication of timely, useful, and critical information to community members in multiple languages through multiple outreach methods.
- ▶ Recruit, train, and deploy volunteers
- ▶ Developed and implemented legally compliant virtual meeting infrastructure for City Council, School Committee, town halls, and public hearings

# Highlights of ICS Initiatives

- ▶ 311 has had month after month record-breaking call volumes up to 40% higher than normal.
- ▶ Created 150 new web pages dedicated to COVID-19, with a 76% increase in web users year-over-year.
- ▶ Distributed food to more than 7,400 households through the emergency food pantry
- ▶ Provided technical assistance and \$1.75 million in loans to hundreds of small businesses.
- ▶ Provided over \$500,000 in grants to the arts and cultural community
- ▶ Established and promoted the charitable Somerville Cares Fund, which has raised ~\$800,000 for residents in need
- ▶ Held dozens of Town Halls, ranging from school reopening to the phased reopening process in English, Portuguese, and Haitian-Creole.

# COVID-19 budget (Jan-Mar)

# Why we need a COVID-19 budget

- ▶ Two main external funding sources
  - ▶ CARES Act – limited to costs incurred by 12/30
  - ▶ FEMA's Public Assistance program – inconsistent, changing guidance
- ▶ Challenges:
  - ▶ Covid-19 emergency-related funding expiring
  - ▶ No reliable, clear and consistent source of funding lasting for the duration of the emergency.
  - ▶ Inadequate funding for unplanned and fluctuating expenses incurred due to COVID response



# CARES Act Expenses

## (finals & projected, as of 12/15)

Expense / category	Estimated cost
Building assessments, SPS HVAC improvements	\$614,128
Cleaning, disinfection, air cleaners, including staff overtime	\$486,840
Construction site (SHS, West Branch, SAUSI) cleaning	\$993,905
Elections temporary staff and supplies	\$71,532
City's cost-share for FEMA FY20 expenses (approx.)	\$242,306
Food pantry and mobile market support	\$4,643
PPE and cleaning supplies for City and School staff	\$144,460
Communications needs & supports	\$131,000
Social distancing supplies & compliance support	\$62,622
SPS costs, including IT, Rec programming, furniture	\$1,763,758
Short-term rental assistance and program implementation	\$565,000
Telework licenses, subscriptions, hardware	\$35,539
COVID testing, contact tracing, and wastewater testing	\$292,000
<b>TOTAL</b>	<b>\$5,407,733</b>

# Summary of Appropriations for COVID-19 Budget (January 1-March 31, 2021)

Category Name	Appropriation Amount (\$)	Additional Info
Resident Outreach & Communications	121,090	Website support, online meeting accessibility, ethnic media outreach, printing costs
311 Call Center Resources	39,493	Constituent Services additional staffing and technology
Testing & Contact Tracing	291,000	Contact tracing, community and school testing
PPE & Supplies	170,000	PPE & supplies citywide
Out of School Time Programming	120,000	Parks & Rec and HHS programming (staff & supplies)
Health & Safety Compliance	45,000	Social distancing inspection & compliance
School Resources	180,000	Testing coordinator, communications, staffing, and technology
School Wellness Staffing	37,760	Staffing for school wellness rooms
Public Safety Overtime	142,500	Public safety overtime
Public Works Overtime	170,477	DPW overtime for school reopening
FEMA Cost Share	100,000	Unfunded portion of City costs for FEMA 25% cost share
<b>Total</b>	<b>1,417,320</b>	

# New Surge Mitigation: Reopening Rollback + Emergency Relief

# Reopening Rollback

- ▶ On Monday, December 14<sup>th</sup>, Somerville, Boston, and several other municipalities in the greater Boston region announced we would be rolling back to a modified version of phase 2.2 of the state's reopening plan
  - ▶ Effective Wednesday, December 16<sup>th</sup> at 11:59pm
  - ▶ Will remain in effect for a minimum of three weeks
  - ▶ Additional rollbacks may follow

# Reopening Rollback

## Closed as of the end of day on Wed., Dec. 17

- ▶ Indoor fitness centers and health clubs, including gyms using alternative spaces. One-on-one personal training sessions are allowed.
- ▶ Indoor non-athletic instructional classes in arts, education & life sciences for persons 18 years and older
- ▶ Indoor recreational and athletic facilities (except for youth 18 and under), indoor pools may remain open for all ages under pre-registration format structure limited to one person per swim lane
- ▶ Indoor recreational venues with potential for low-contact (for example, ax throwing, rock-climbing, etc.)

# Reopening Rollback

**Remaining closed or restricted (Somerville has had existing additional phase restrictions in place)**

- ▶ Outdoor theaters and outdoor performance venues
- ▶ Indoor theaters, arenas, and performance venues, including concert halls
- ▶ Museums
- ▶ Movie theaters
- ▶ Indoor live theaters
- ▶ Bowling facilities, arcades, and gaming spaces
- ▶ Indoor event spaces (meeting rooms, ballrooms, private party rooms, social clubs)

# COVID-19 Emergency Relief

31

- ▶ A bridge of financing to keep Somerville strong
- ▶ Three areas of need:
  - ▶ Small Businesses
  - ▶ Artists and Cultural Organizations
  - ▶ Residents in need

# COVID-19 Emergency Relief: Small Businesses

32

- ▶ To date:
  - \$1,750,000 of forgivable loan
  - \$700,000 in fee waivers
  
- ▶ NEW:
  - COVID-19 Small Business Emergency Relief Fund - \$5M
    - Focused on businesses that have remained closed, been recently closed, or had operations significantly reduced due to COVID-19 restrictions



# COVID-19 Emergency Relief: Artists and Cultural Organizations

- ▶ To date:
  - \$500k Artist Community Support program
  
- ▶ NEW:
  - Additional \$600,000 to bring total funds to \$1.1M

# COVID-19 Emergency Relief:

## Basic needs

34

- ▶ To date:
  - \$2.26M for rental assistance
  - \$400k+ for child-care, food and workforce development
  - Additional capacity in OHS and local non-profits to help Somerville residents apply for state rental assistance (RAFT program)
  
- ▶ NEXT STEPS:
  - Future requests will be made if funds are being depleted and no additional state or federal funds are available

# Funding sources for proposed new economic relief package

## For small business:

*The COVID-19 Small Business Emergency Relief Fund will be funded at \$5,000,000 by transferring money from the following sources:*

- ▶ Rainy Day Stabilization \$1,843,117
- ▶ Capital Stabilization \$1,000,000
- ▶ Street Reconstruction Stabilization \$1,500,000
- ▶ Wynn Casino – FY21 Payments \$ 300,000
- ▶ Water Transportation Stabilization \$ 150,306
- ▶ Algonquin Mitigation Stabilization \$ 132,359
- ▶ Small Business Assistance Stabilization \$ 74,218

## For artists and arts non-profits:

*We will supplement the recently announced \$500,000 Artist Community Support program with an additional \$600,000 by transferring money from the following sources:*

- Wynn Casino – FY20 and FY21 payments \$ 200,000
- Park Stabilization \$ 400,000

Note: A \$400,000 state grant for parks, recently accepted, reimburses the City and frees up funds for this proposed use.

# Replenishing Funds

- ▶ Note: We intend to replenish the stabilization accounts once federal/state funding or free cash is certified in February 2021.



# Questions?