



**CITY OF SOMERVILLE**  
Commonwealth of Massachusetts  
93 Highland Avenue  
Somerville, MA 02143  
(617) 625-6600

## **BUSINESS LICENSE APPLICATION - Small Wireless Facility**

File #: 21-012722

License #: BL21-000119

Address: 51 BEACON ST

Licensee: Matthew Pricco Network Building + Consulting

DBA Name: Extenet Systems, Inc.

Business Ownership Type: Corporation

Legal Name of Entity: Extenet Systems, LLC

Owners/Officers: James A. Hyde, Anthony Lehv, Daniel L. Timm,

### **License Information:**

**Do you believe this to be a 6409(a) application?:** No

**Describe the reason for the work, and the intended beneficiaries:** Small Cell Wireless Facility  
**Provide the detailed description of the work that should appear on the License:** A small cell wireless facility, along with all required equipment and fiber for its operation, to an existing utility pole in the right-of-way located on 51 Beacon Street, with an electricity connection (Pole Number: 24/6A). Location approximately as shown on attached. construction plans.

**# of installations on existing poles:** 1

**# of installations on new poles:** 0

**Provide the legal name of the entity that will own the License:** Extenet Systems, Inc.

Approval Conditions:

**Approved By:**

**John Power, Approved with Conditions**

Approved with condition that no additional overhead wires will be strung across Beacon St to feed this node.

**Isabela Maia, Approved**

**Hans Jensen, Approved**

**Malik Drayton, Approved with Conditions**

APPROVAL CONDITION: MD20220713: Contractor shall take all necessary precautions to avoid damaging any tree or tree part with equipment.

APPROVAL CONDITION: MD20220713: All nearby street tree(s) shall be protected prior to and during all construction activities using TREE BOX or TREE WRAPS. . TREE BOX shall be constructed from 2 in.

x 4 in. lumber creating a box around the border of the tree pit with 2 in. x 4 in. lumber standing straight up at the corners and wrapped with orange snow fence. Detail attached. . TREE WRAPS (TREE TRUNK WRAPPING PROTECTION LUMBER) shall consist of 2 in. x 4 in. and 8 ft. height lumber wired together in close spacing with zip ties or 16 gauge galvanized steel wire to form a protective enclosure around tree trunks. Use burlap to separate the wood from the bark if necessary to prevent wood from scraping or bruising bark. Do not use staples or puncture the trunk in any way.

APPROVAL CONDITION: MD20220713: Any tree roots less than two (2) inches in diameter that cannot be avoided during construction shall be carefully and cleanly cut with a clean pair of pruning shears or loppers. Roots are to be cut back flush with the edge of the trench. If any tree roots greater than two (2) inches in diameter are encountered, stop work immediately and contact the City Urban Forester. Any and all pruning of roots greater than 2 inches in diameter must be completed under the supervision of the City Urban Forester.

**Eric Weisman, Approved**

**Kimberly M. Wells, Approved**



LATITUDE: 42.37590839°  
LONGITUDE: -71.10336108°

# NE-MA-BSTN3N01-TMO NE-MA-BSTN3N01-03393 / NE3216BA\_21LAB

**PROPOSED SMALL CELL NODE**  
51 BEACON STREET, SOMERVILLE, MA 02143  
CITY OF SOMERVILLE, MIDDLESEX COUNTY



Know what's below.  
Call before you dig.

ENGINEERING FIRM



APPLICANT



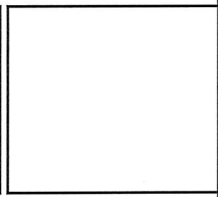
SITE INFORMATION

NE-MA-BSTN3N01-03393  
TMO ID: NE3216BA\_21LAB  
51 BEACON STREET  
SOMERVILLE, MA 02143  
MIDDLESEX COUNTY

DESIGN RECORD

REVISIONS			
REV	DATE	DESCRIPTION	BY
1	7/1/22	EQUIP. HEIGHT REVISED	DFR
0	08/26/21	PRELIMINARY	CWE

PROFESSIONAL STAMP



ENGINEER

KRUPAKARAN KOLANDAIWELU, P.E.  
MA PROFESSIONAL ENGINEER LIC. #50019

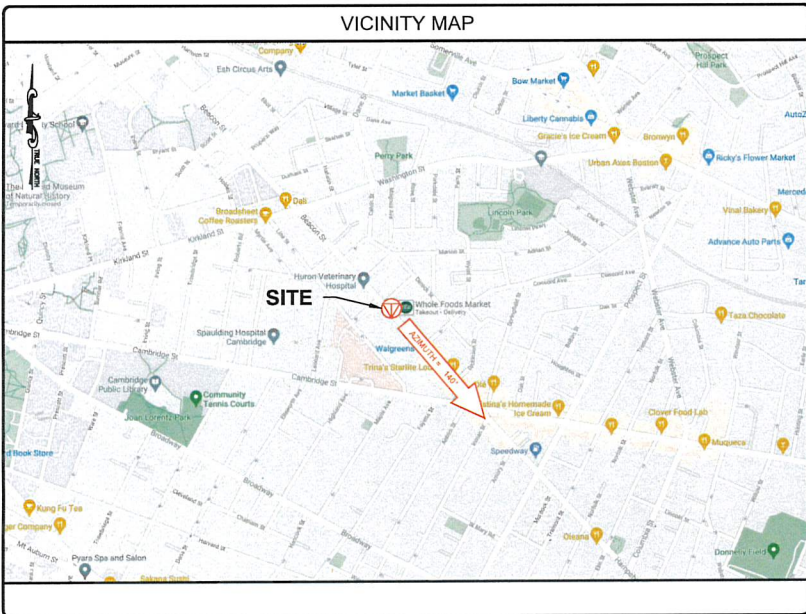
SHEET TITLE

**TITLE SHEET**

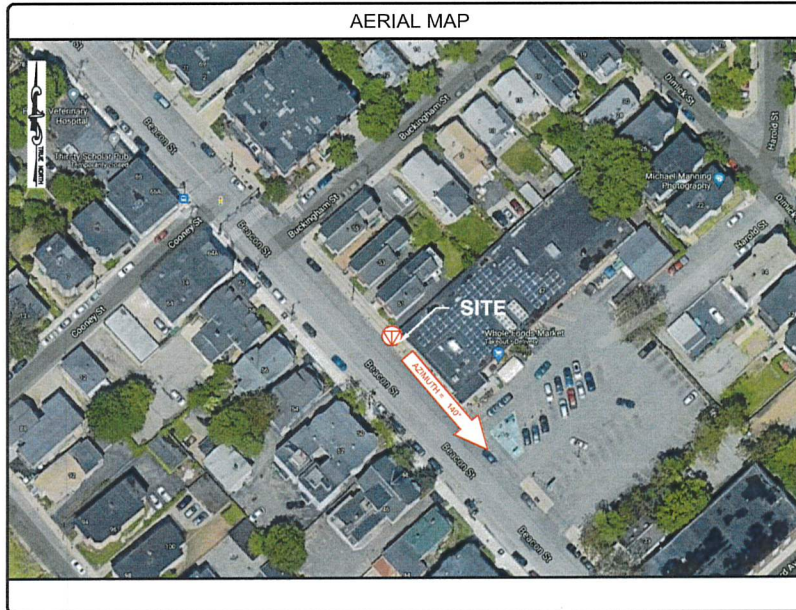
SHEET NUMBER

SHEET  
**01 OF 05**

VICINITY MAP



AERIAL MAP



**PROJECT INFORMATION**

PROJECT NAME: NE-MA-BSTN3N01-TMO  
POLE TAG: 24/6  
LATTITUDE: 42.37590839°  
LONGITUDE: -71.10336108°  
JURISDICTION: CITY OF SOMERVILLE  
MIDDLESEX COUNTY  
EXTENET PROJECT MANAGER: ADAM DORL  
3030 WARRENVILLE RD, SUITE 340  
LISLE, IL 60532  
NOC: (630) 892-5327  
HUB LOCATION: HUB-4BS0364A  
94 BEACON STREET  
SOMERVILLE, MA 02143  
ELECTRIC COMPANY: EVERSOURCE

**CODE COMPLIANCE**

ALL WORK AND MATERIALS SHALL BE PERFORMED AND INSTALLED IN ACCORDANCE WITH THE CURRENT EDITIONS OF THE FOLLOWING CODES AS ADOPTED BY THE LOCAL GOVERNING AUTHORITIES. NOTHING IN THESE PLANS IS TO BE CONSTRUED TO PERMIT WORK NOT CONFORMING TO THE LATEST EDITIONS OF THE FOLLOWING CODES.

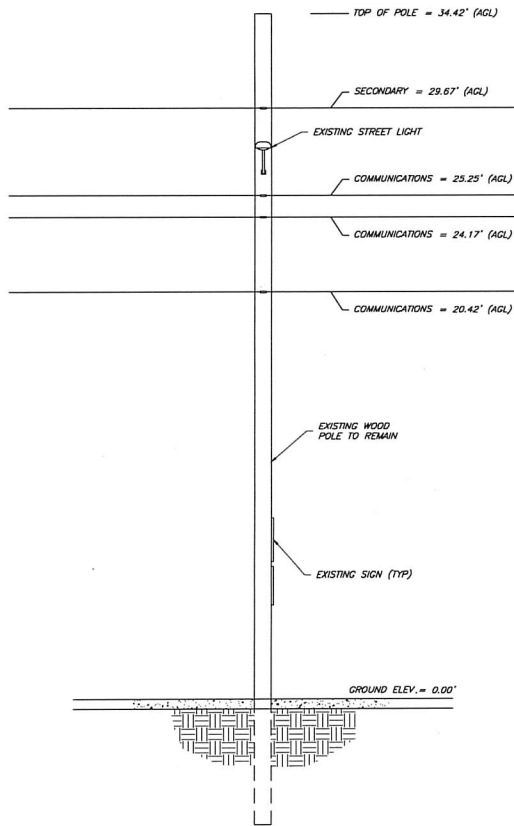
- 2015 INTERNATIONAL BUILDING CODE (MASSACHUSETTS AMENDED 9TH EDITION)
- 2017 NATIONAL ELECTRICAL CODE
- NFPA 1-2015 EDITION
- 2015 IFC - REFERENCE 527 CMR
- AMERICAN CONCRETE INSTITUTE
- AMERICAN INSTITUTE OF STEEL CONSTRUCTION
- MANUAL OF STEEL CONSTRUCTION 13TH EDITION
- ANSI/TIA-222-G
- TIA 607
- INSTITUTE FOR ELECTRICAL & ELECTRONICS ENGINEER 81
- IEEE C2 NATIONAL ELECTRIC SAFETY CODE LATEST EDITION
- TELECORDIA GR-1275
- ANSI/T 311

**DRAWING INDEX**

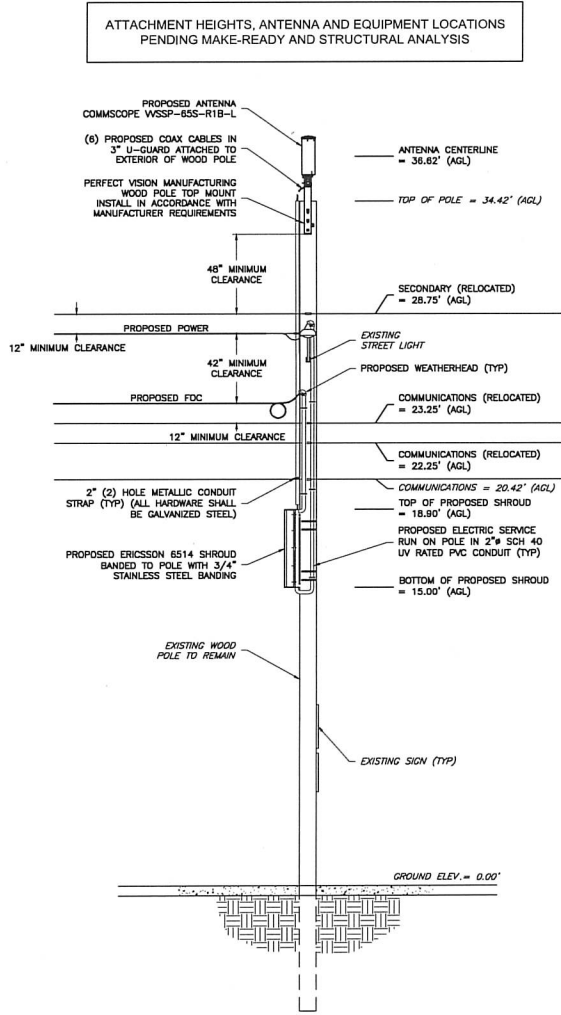
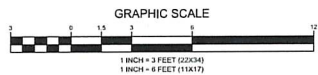
- 01 TITLE SHEET
- 02 NOTES
- 03 ELEVATION
- 04 ANTENNA & EQUIPMENT DETAILS
- 05 ELECTRICAL & GROUNDING DETAILS



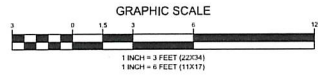




EXISTING ELEVATION (LOOKING NORTHEAST)



PROPOSED ELEVATION (LOOKING NORTHEAST)



NOTES:

- EQUIPMENT ELEVATION IS SUBJECT TO MAKE READY PERFORMED BY POLE OWNER.
- NEW PLACARD SHALL BE OSHA COMPLIANT AND DISPLAY THE FOLLOWING INFORMATION: TRANSMITTING SYSTEM, EQUIPMENT OWNER & PROPER CONTACT INFORMATION. INSTALL PER UTILITY COMPANY REQUIREMENTS AND VERIFY EXACT MOUNTING HEIGHT IN FIELD.
- MAINTAIN MINIMUM OF 8'-6" FROM GROUND LEVEL TO BOTTOM OF PROPOSED SHROUD.
- MAINTAIN MINIMUM OF 42" FROM TOP COMMUNICATION ATTACHMENT TO BOTTOM SECONDARY POWER ATTACHMENT.
- MAINTAIN MINIMUM OF 48" CLEARANCE IN ANY DIRECTION FROM ANTENNA AND MOUNTING BRACKET TO NEAREST SECONDARY POWER CONNECTION.
- MAINTAIN MINIMUM OF 12" FROM TOP COMMUNICATIONS LINE TO ANY ADDITIONAL COMMUNICATIONS LINE.
- MAINTAIN MINIMUM OF 5' FROM GROUND LEVEL TO METER LOCATION.
- MAINTAIN MINIMUM OF 6" CLEARANCE IN ANY DIRECTION FROM ANTENNA AND MOUNTING BRACKET TO NEAREST PRIMARY POWER CONNECTION.
- EQUIPMENT TO BE INSTALLED ON OPPOSITE SIDE OF TRAFFIC FLOW.
- POWER SUPPLY & WEATHERHEAD SHOULD BE INSTALLED ON THE SAME SIDE OF THE POLE WITH THE SECONDARY(S) AND COMMUNICATION CABLE(S) TO ACCOMMODATE CLIMBING OF THE POLE.

ENGINEERING FIRM



APPLICANT



SITE INFORMATION

NE-MA-BSTN3N01-03393  
 TMO ID: NE3216BA\_21LAB  
 51 BEACON STREET  
 SOMERVILLE, MA 02143  
 MIDDLESEX COUNTY

DESIGN RECORD

REVISIONS			
REV	DATE	DESCRIPTION	BY
1	7/1/22	EQUIP. HEIGHT REVISED	DFR
0	08/26/21	PRELIMINARY	CWE

PROFESSIONAL STAMP

ENGINEER

KRUPAKARAN KOLANDAVELU, P.E.  
 MA PROFESSIONAL ENGINEER LIC. #50019

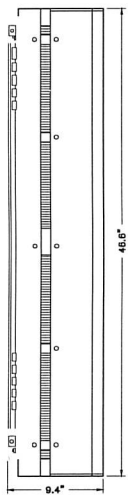
SHEET TITLE

ELEVATION

SHEET NUMBER

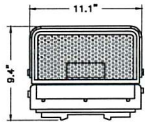
SHEET  
**03 OF 05**



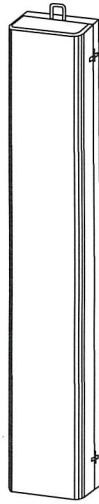


SIDE ELEVATION

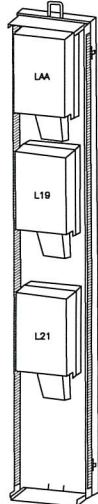
**MECHANICAL SPECIFICATIONS**  
 ERICSSON PART# - ENCLOSURE 6514  
 HEIGHT: 48.6 IN  
 WIDTH: 11.1 IN  
 DEPTH: 9.4 IN  
 WEIGHT: 44.5 LBS (ENCLOSURE ONLY)  
 WEIGHT: 103.2 LBS (FULLY EQUIPPED)



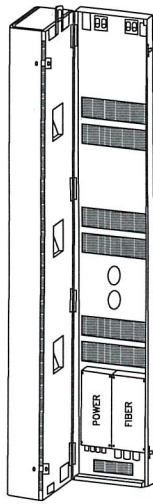
BOTTOM PLAN



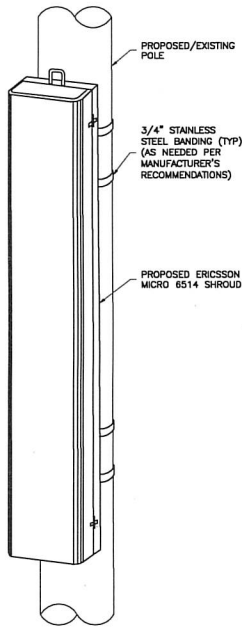
FRONT CLOSED ELEVATION



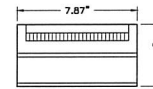
FRONT INTERIOR ELEVATION



BACK INTERIOR ELEVATION



2 EQUIPMENT MOUNTING DETAIL  
 04 NTS

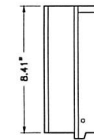


TOP VIEW

WEIGHT = 10.36 LBS



FRONT ELEVATION

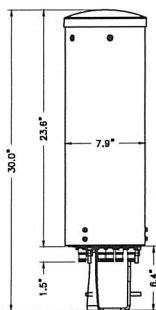


SIDE ELEVATION

ERICSSON RADIO			
4402 B2/B25	AC: 100-250V	NORMAL VOLTAGE RANGE AT RADIO INPUT CONNECTOR DC: -36 TO -58.5	NOMINAL VOLTAGE: -48V DC
4402 B66A	AC: 100-250V	NORMAL VOLTAGE RANGE AT RADIO INPUT CONNECTOR DC: -36 TO -58.5	NOMINAL VOLTAGE: -48V DC

3 ERICSSON REMOTE RADIO UNIT (RRU)  
 04 NTS

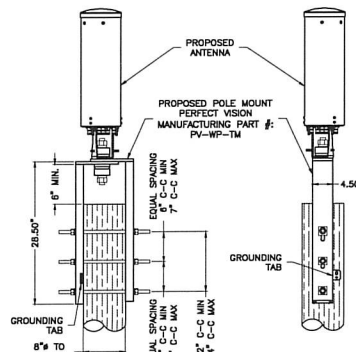
1 ERICSSON MICRO 6514 SHROUD DETAIL  
 04 NTS



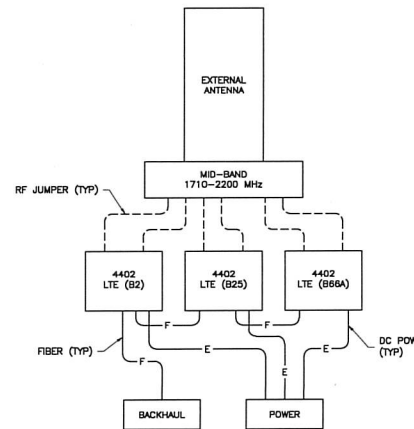
**MECHANICAL SPECIFICATIONS**  
 COMSCOPE PART# - WSSP-655-R1B-L  
 HEIGHT: 23.6 IN  
 WIDTH: 7.9 IN  
 WEIGHT: 13.0 LBS (WITHOUT MOUNT)



4 ANTENNA DETAIL  
 04 NTS

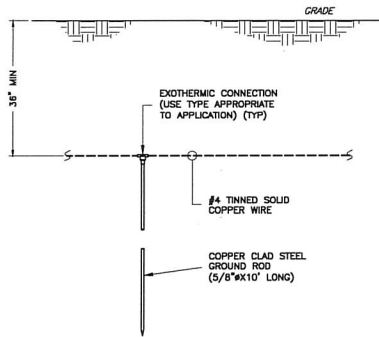


5 ANTENNA MOUNT DETAIL  
 04 NTS

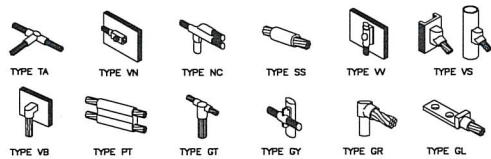


6 WIRING DIAGRAM  
 04 NTS

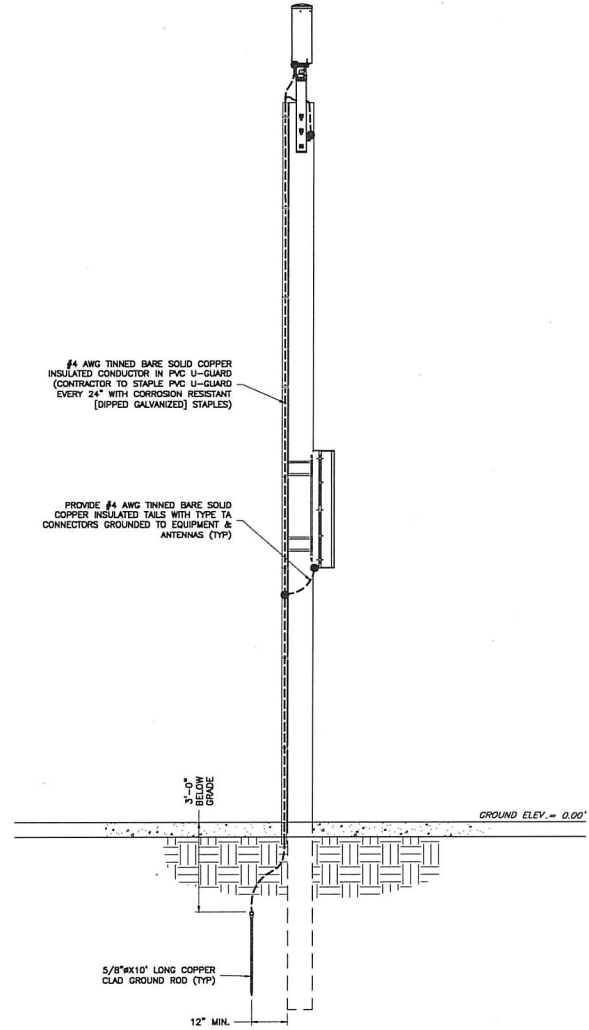
ENGINEERING FIRM	<p><b>TOTALLY COMMITTED.</b></p> <p>NB+C ENGINEERING SERVICES, LLC.  <small>100 APOLLON DRIVE, SUITE 300      CHATTAHOOCHEE, MA 01559      (419) 866-6228</small></p>												
APPLICANT	<p>extinet™ YOUR NETWORK EVERYWHERE.      SYSTEMS      3030 WARRENVILLE ROAD, SUITE 340      LISLE, IL 60532      (630) 505-3800</p>												
SITE INFORMATION	<p>NE-MA-BSTN3N01-03393          TMO ID: NE3216BA_21LAB          51 BEACON STREET          SOMERVILLE, MA 02143          MIDDLESEX COUNTY</p>												
DESIGN RECORD	<p>REVISIONS</p> <table border="1"> <thead> <tr> <th>REV</th> <th>DATE</th> <th>DESCRIPTION</th> <th>BY</th> </tr> </thead> <tbody> <tr> <td>1</td> <td>7/11/22</td> <td>EQUIP. HEIGHT REVISED</td> <td>DFR</td> </tr> <tr> <td>0</td> <td>08/25/21</td> <td>PRELIMINARY</td> <td>CWE</td> </tr> </tbody> </table>	REV	DATE	DESCRIPTION	BY	1	7/11/22	EQUIP. HEIGHT REVISED	DFR	0	08/25/21	PRELIMINARY	CWE
REV	DATE	DESCRIPTION	BY										
1	7/11/22	EQUIP. HEIGHT REVISED	DFR										
0	08/25/21	PRELIMINARY	CWE										
PROFESSIONAL STAMP													
ENGINEER	<p>KRUPAKARAM KOLANDAVELU, P.E.          MA PROFESSIONAL ENGINEER LIC. #50019</p>												
SHEET TITLE	<p><b>ANTENNA &amp; EQUIPMENT DETAILS</b></p>												
SHEET NUMBER	<p>SHEET  <b>04 OF 05</b></p>												



1 TYPICAL GROUND ROD DETAIL  
05 NTS



2 GROUNDING CONNECTION DETAILS  
05 NTS



3 ELECTRICAL & GROUNDING RISER DIAGRAM  
05 NTS

NOTE:  
EXISTING/PROPOSED UTILITY WIRES,  
SIGNS, AND EXISTING EQUIPMENT  
NOT SHOWN FOR CLARITY.

ENGINEERING FIRM

**NB+C**  
TOTALLY COMMITTED.  
NB+C ENGINEERING SERVICES, LLC.  
100 CAPITAL DRIVE, SUITE 403  
GROTON, CONNECTICUT 06340

APPLICANT

**extenent**  
YOUR NETWORK  
EVERYWHERE  
SYSTEMS  
3030 WARRENVILLE ROAD, SUITE 340  
LITTLE, IL 60532  
(630) 505-3800

SITE INFORMATION

NE-MA-BSTN3N01-03393  
TMO ID: NE3216BA\_21LAB  
51 BEACON STREET  
SOMERVILLE, MA 02143  
MIDDLESEX COUNTY

DESIGN RECORD

REVISIONS

REV	DATE	DESCRIPTION	BY
1	7/1/22	EQUIP. HEIGHT REVISED	DFR
2	08/26/21	PRELIMINARY	CWE

PROFESSIONAL STAMP

ENGINEER

KRUPAKARAN KOLANDAIVELU, P.E.  
MA PROFESSIONAL ENGINEER LIC. #50019

SHEET TITLE

**ELECTRICAL  
& GROUNDING  
DETAILS**

SHEET NUMBER

SHEET  
**05 OF 05**