



CITY OF SOMERVILLE
Commonwealth of Massachusetts
93 Highland Avenue
Somerville, MA 02143
(617) 625-6600

BUSINESS LICENSE APPLICATION - Small Wireless Facility

File #: 19-014837

License #: BL19-000090

Address: 17 ALDRICH ST

Licensee: Matthew Pricco Network Building + Consulting

DBA Name: ExteNet Systems, Inc.

Business Ownership Type: Corporation

Legal Name of Entity: ExteNet Systems, Inc.

Owners/Officers: James A. Hyde, H. Anthony Lehv, Daniel L. Timm,

License Information:

Do you believe this to be a 6409(a) application?: No

Describe the reason for the work, and the intended beneficiaries:

Provide the detailed description of the work that should appear on the License: Extenet proposes to install a small cell wireless facility on an existing wood utility pole. The principal elements of the proposed facility are an antenna housed in a 24" long shroud side-mounted on the pole, including an additional 6" of base mounting equipment and three radios in a shroud also mounted on the pole. See the plans accompanying this application for details. This proposal improves wireless capacity for residents, businesses and visitors.

of installations on existing poles: 1

of installations on new poles:

Provide the legal name of the entity that will own the License: ExteNet Systems, Inc.

Approval Conditions:

Approved By:

Hans Jensen, Approved

Karla Cuarezma, Approved

Malik Drayton, Approved

John Power, Approved

Mark Lawhorne, Approved

John J. Long, Approved

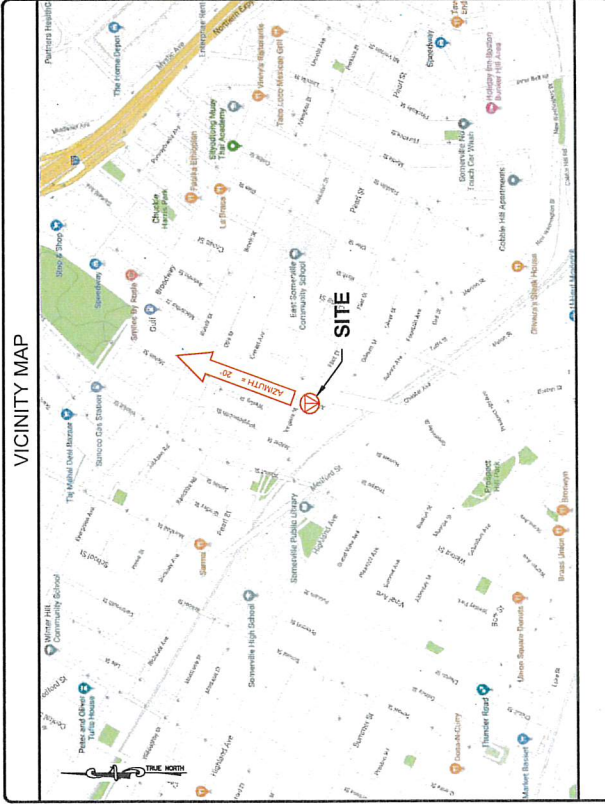
LATITUDE: 42.385920°
LONGITUDE: -71.091164°



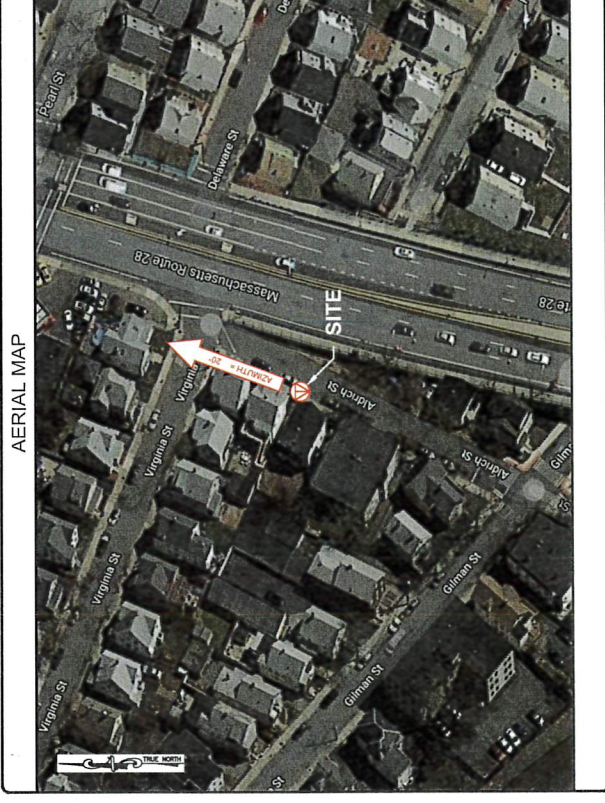
NE-MA-BSTN3N01-TMO
NE-MA-BSTN3N01-03313 / NE3210BA_11LAB
PROPOSED SMALL CELL NODE
17 ALDRICH STREET, SOMERVILLE, MA 02145
CITY OF SOMERVILLE, MIDDLESEX COUNTY



VICINITY MAP



AERIAL MAP



PROJECT INFORMATION

PROJECT NAME:	NE-MA-BSTN3N01-TMO
POLE TAG:	10324
JURISDICTION:	42.385920° -71.091164° CITY OF SOMERVILLE MIDDLESEX COUNTY
EXTENET PROJECT MANAGER:	RICK ANGELELLI 17 ALDRICH STREET SOMERVILLE, MA 02145 NOC: (609) 892-5327
HUB LOCATION:	HUB: 450508404 SOMERVILLE, MA 02143
ELECTRIC COMPANY:	EVERSOURCE

CODE COMPLIANCE

ALL WORK AND MATERIALS SHALL BE PERFORMED AND INSTALLED IN ACCORDANCE WITH THE CURRENT EDITIONS OF THE FOLLOWING CODES. THE CURRENT EDITIONS OF THE FOLLOWING CODES SHALL BE USED UNLESS OTHERWISE SPECIFIED IN THESE PLANS. NOTHING IN THESE PLANS IS TO BE CONSTRUED TO PERMIT WORK NOT CONFORMING TO THE LATEST EDITIONS OF THE FOLLOWING CODES.

- 2015 INTERNATIONAL BUILDING CODE
- 2017 NATIONAL ELECTRICAL CODE (NATIONAL EDITION)
- 2017 NATIONAL ELECTRICAL CODE
- NFPA 1-2015 EDITION
- 2015 IFC - REFERENCE 527 CMR
- 2015 IFC - REFERENCE 527 CMR
- AMERICAN INSTITUTE OF STEEL CONSTRUCTION
- MANUAL OF STEEL CONSTRUCTION 13TH EDITION

DRAWING INDEX

01	TITLE SHEET
02	NOTES
03	ELEVATION
04	ANTENNA & EQUIPMENT DETAILS
05	ELECTRICAL & GROUNDING DETAILS

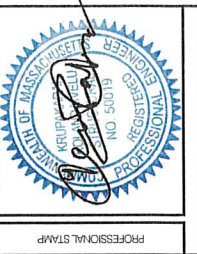
NB+C
TOTALLY COMMITTED.
NB+C ENGINEERING SERVICES, LLC.
100 WASHINGTON STREET
SOMERVILLE, MA 02145
(609) 892-5327

extenet
YOUR NETWORK. EVERYWHERE.
3030 WAREHOUSSE ROAD, SUITE 340
LISLE, IL 60532
(609) 255-3050

NE-MA-BSTN3N01-03313
TMO ID: NE3210BA_11LAB
17 ALDRICH STREET
SOMERVILLE, MA 02145
MIDDLESEX COUNTY

REVISIONS

REV	DATE	DESCRIPTION	BY
5	03/10/20	IF COMPLIANCE ADOPTED	DRG
4	07/20/20	MODIFY REVISION	DRG
3	09/23/19	REVISED	NBS
2	08/06/19	STAMP ADOPTED	COE
1	07/23/19	POC REVISED	NBS
0	06/06/19	PRELIMINARY	DPR



ENGINEER
KRUPAKARAN NOLANDAVELU, P.E.
MA PROFESSIONAL ENGINEER LIC. #50019

SHEET TITLE
TITLE SHEET

SHEET NUMBER
01 OF 05

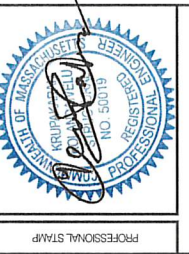
NBC
TOTALLY COMMITTED
NBC ENGINEERING SERVICES, LLC
100 WASHINGTON STREET, SUITE 200
SOMERVILLE, MA 01906
TEL: 617.261.1111
WWW.NBC-ENGINEERING.COM

extenet
YOUR NETWORK
EVERYWHERE
3000 WAREHOUSABLE ROAD, SUITE 340
LISLE, IL 60532
(815) 552-3900

NE-MA-BSTN3N01-03313
TMO ID: NE32108A, 11LAB
17 ALDRICH STREET
SOMERVILLE, MA 02145
MIDDLESEX COUNTY

REVISIONS

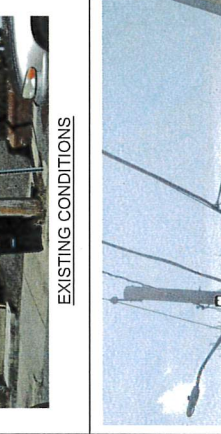
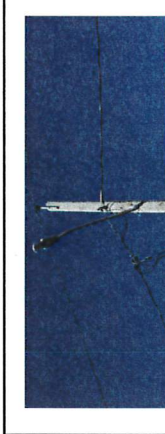
REV	DATE	DESCRIPTION	BY
5	03/15/20	15' COMPLIANCE ADDED	DRG
4	01/02/20	WOULD REVISED	DRG
3	09/23/19	REMOVED	NSR
2	09/26/19	STAMP ADDED	CHE
1	04/16/19	FOG REMOVED	NSR
0	04/16/19	PRELIMINARY	DFR



KRUPAKARAN KOLANJAVELU, P.E.
MA PROFESSIONAL ENGINEER, #50019

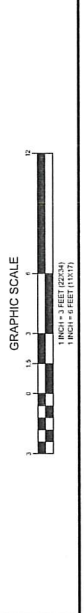
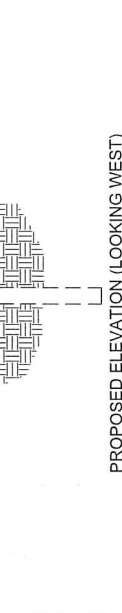
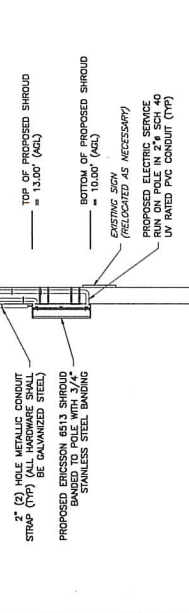
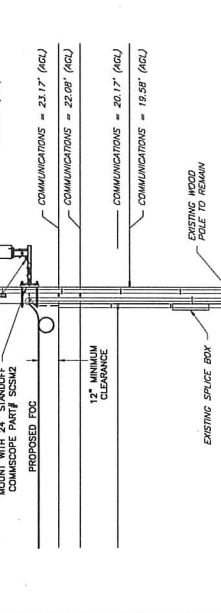
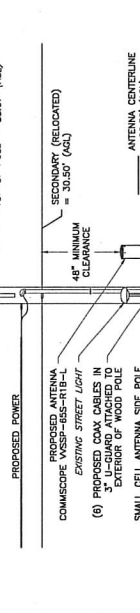
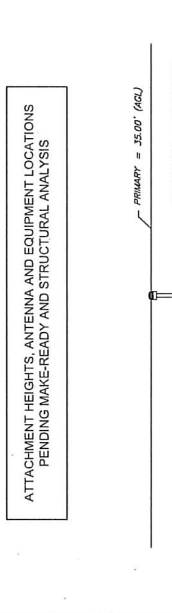
ELEVATION

SHEET
03 OF 05

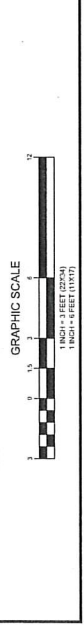
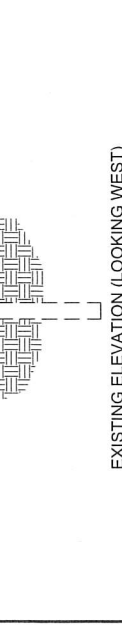
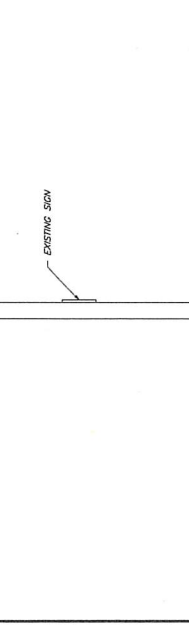
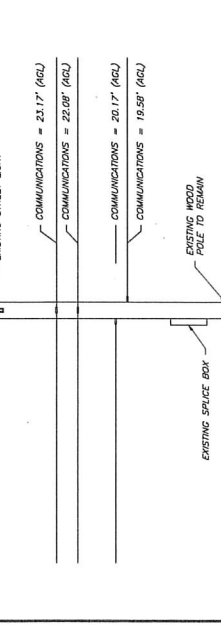
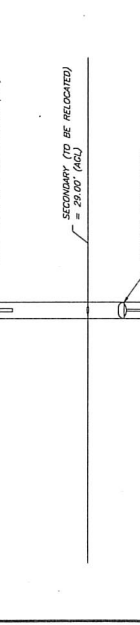
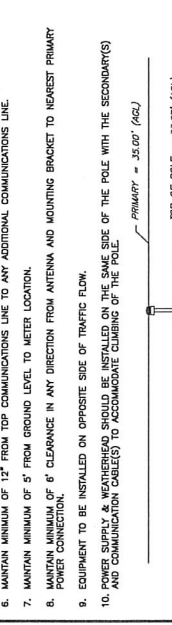


NOTE: NO INSTALLATION SHALL BE PLACED LESS THAN 15 FEET FROM A RESIDENCE'S WINDOW, DOOR OPENING, PORCH, OR BALCONY.

ATTACHMENT HEIGHTS, ANTENNA AND EQUIPMENT LOCATIONS
PENDING MAKE-READY AND STRUCTURAL ANALYSIS



- NOTES:
- EQUIPMENT ELEVATION IS SUBJECT TO MAKE READY PERFORMED BY POLE OWNER.
 - NEW PLACES SHALL BE ASKED TO VERIFY THE FOLLOWING INFORMATION: TRANSMITTING SYSTEM, EQUIPMENT OWNER & PROPER CONTACT INFORMATION, INSTALL PER UTILITY COMPANY REQUIREMENTS AND VERIFY EXACT MOUNTING HEIGHT IN FIELD.
 - MAINTAIN MINIMUM OF 8'-6" FROM GROUND LEVEL TO BOTTOM OF PROPOSED SHROUD.
 - MAINTAIN MINIMUM OF 42" FROM TOP COMMUNICATIONS ATTACHMENT TO BOTTOM SECONDARY POWER ATTACHMENT.
 - MAINTAIN MINIMUM OF 48" CLEARANCE IN ANY DIRECTION FROM ANTENNA AND MOUNTING BRACKET TO NEAREST SECONDARY POWER CONNECTION.
 - MAINTAIN MINIMUM OF 12" FROM TOP COMMUNICATIONS LINE TO ANY ADDITIONAL COMMUNICATIONS LINE.
 - MAINTAIN MINIMUM OF 5' FROM GROUND LEVEL TO METER LOCATION.
 - MAINTAIN MINIMUM OF 6" CLEARANCE IN ANY DIRECTION FROM ANTENNA AND MOUNTING BRACKET TO NEAREST PRIMARY POWER CONNECTION.
 - EQUIPMENT TO BE INSTALLED ON OPPOSITE SIDE OF TRAFFIC FLOW.
 - POWER SUPPLY & WEATHERHEAD SHOULD BE INSTALLED ON THE SAME SIDE OF THE POLE WITH THE SECONDARY(S) AND COMMUNICATION CABLE(S) TO ACCOMMODATE CLIMBING OF THE POLE.



REV	DATE	DESCRIPTION	BY
5	03/10/08	15' COMPLIANCE ADDED	ENG
4	01/02/08	MOUNT REVISED	ENG
3	06/23/07	REVISED	MSR
2	10/05/07	STAMP ADDED	ENG
1	05/05/07	FCG REVERSED	MSR
0	04/05/07	PRELIMINARY	EPL



KRUPARAJAN K. NANDAVELU, P.E.
MA PROFESSIONAL ENGINEER LIC. #50019

ANTENNA & EQUIPMENT DETAILS

SHEET NUMBER
04 OF 05

ENGINEERING FIRM

APPLICANT

SITE INFORMATION

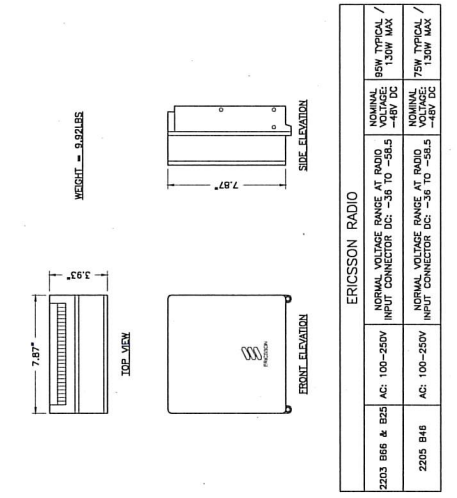
DESIGN RECORD

PROFESSIONAL STAMP

ENGINEER

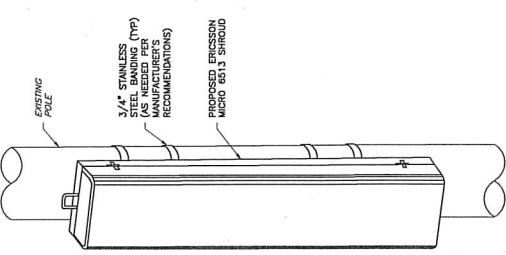
SHEET TITLE

SHEET NUMBER

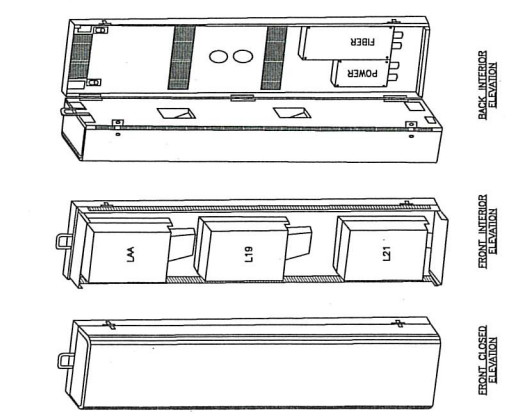


ERICSSON RADIO		NORMAL VOLTAGE RANGE AT RADIO INPUT CONNECTOR DC: -36 TO -58.5	NORMAL VOLTAGE RANGE AT RADIO INPUT CONNECTOR DC: -36 TO -58.5
2203 B66 & E25	AC: 100-250V	2203 LITE (AWS)	AC: 100-250V
2203 B46	AC: 100-250V	2203 LITE (PCS)	AC: 100-250V
		2205 LAM (GSM)	AC: 100-250V

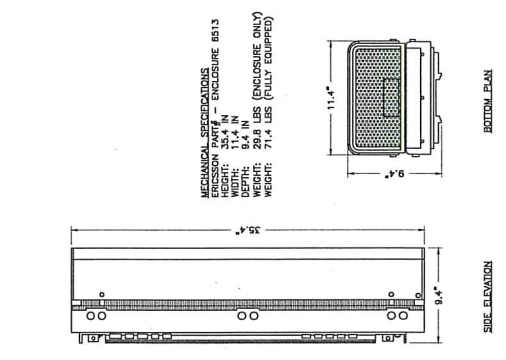
3 ERICSSON REMOTE RADIO UNIT (RRU) 04 NTS



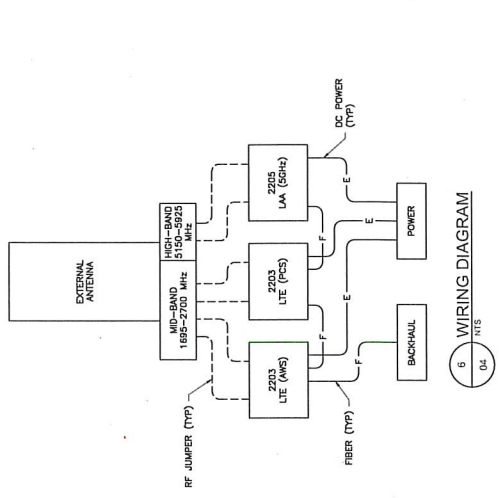
2 EQUIPMENT MOUNTING DETAIL 04 NTS



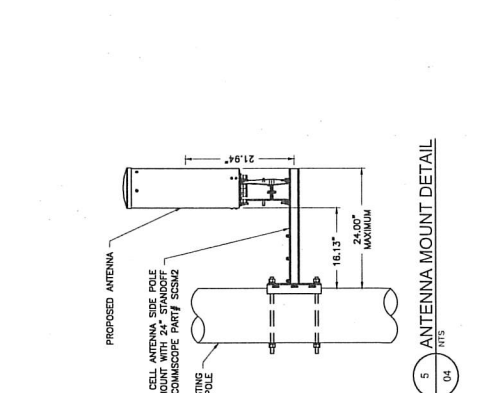
1 ERICSSON MICRO 6513 SHROUD DETAIL 04 NTS



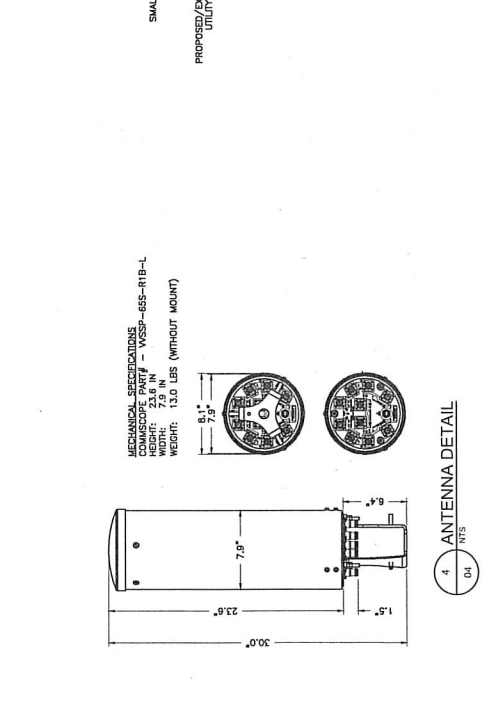
4 ANTENNA DETAIL 04 NTS



5 WIRING DIAGRAM 04 NTS



5 ANTENNA MOUNT DETAIL 04 NTS



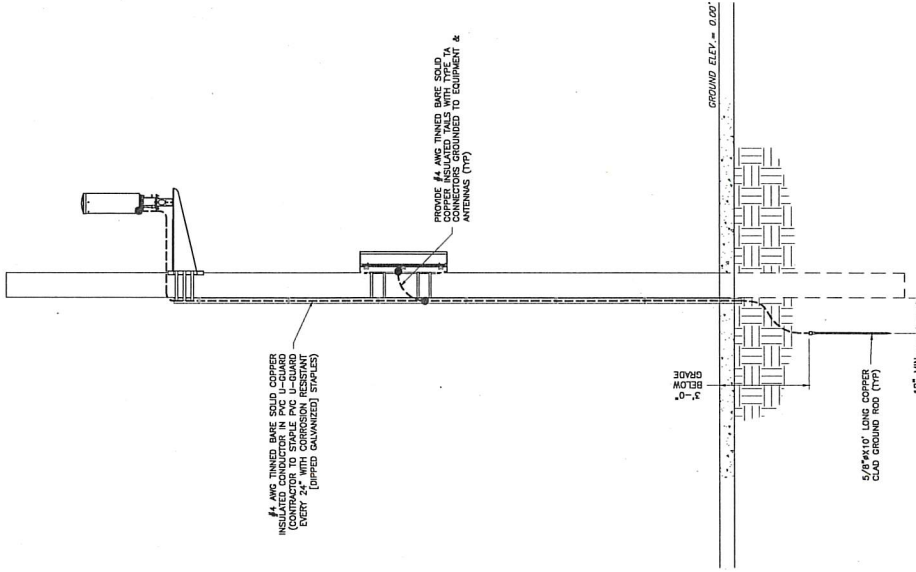
4 ANTENNA DETAIL 04 NTS

REVISIONS

NO.	DATE	DESCRIPTION	BY
5	03/11/20	15' COMPLIANCE ADDED	DRG
4	01/22/20	ADJUNT REVISED	DRG
3	09/22/19	REVISED	NSB
2	08/07/19	STAMP ADDED	CVE
1	04/05/19	FIG. REVISED	NSB
0	04/05/19	PRELIMINARY	DRS

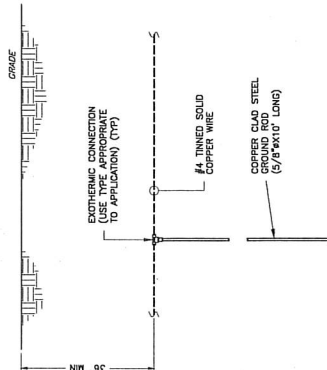


ELECTRICAL
& GROUNDING
DETAILS

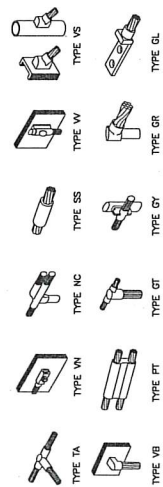


3 ELECTRICAL & GROUNDING RISER DIAGRAM
05 NTS

NOTE:
EXISTING/PROPOSED UTILITY WIRES,
POLES, AND EXISTING EQUIPMENT
NOT SHOWN FOR CLARITY.



1 TYPICAL GROUND ROD DETAIL
05 NTS



2 GROUNDING CONNECTION DETAILS
05 NTS