

UTILITY  
ALD McLAUGHLIN



CITY OF SOMERVILLE, MASSACHUSETTS  
CITY CLERK'S OFFICE  
JOSEPH A. CURTATONE  
MAYOR

JOHN J. LONG  
CITY CLERK

November 10, 2016

**NOTICE**

You are hereby notified that the Board of Aldermen will hold a Public Hearing on the following Petition. You are receiving this Notice because City records indicate that you own property that abuts the work that is being proposed. You and other members of the public are invited to attend and be heard at this Hearing.

**PETITION:** Comcast seeks a Grant of Location to install 244 feet of conduit in Washington Street and Inner Belt Road, from Pole 358/3 southerly to a point of pickup at the rear of 30 Washington Street.

**PLACE:** Aldermanic Chambers, 2<sup>nd</sup> Floor, City Hall, 93 Highland Avenue, Somerville.

**TIME:** Tuesday, November 22, 2016, at 7:00 PM. (Note that this Board meeting is scheduled on a Tuesday.)

**PURPOSE:** The work is necessary to provide service to 30 Washington Street.

John J. Long  
City Clerk

2016 NOV -9 P 2:55



CITY CLERK'S OFFICE  
SOMERVILLE, MA

CITY OF SOMERVILLE, MASSACHUSETTS

DEPARTMENT OF PUBLIC WORKS

JOSEPH A. CURTATONE

MAYOR

**STAN KOTY**  
*Commissioner*

**RICK WILLETTE**  
*Director of Operations*

November 4, 2016

The Honorable Board of Aldermen  
City Hall  
93 Highland Avenue  
Somerville MA, 02143

**RE: Grant of Location  
Comcast  
30 Washington Street**

Dear Board Members:

Preliminary approval is recommended for the petition and plan of Comcast for the placement of 1-4" PVC conduit, from Pole 358/3 a distance of 244' in a southerly direction down Inner Belt Road.

This recommendation is made with reference to Comcast's letter of November 1, 2016 and plan of October 31, 2016 upon stipulation that the Grant of Location is subject to: a reservation of rescission by the Board of Aldermen; indemnification of the City for all liability arising from said Grant; all permit procedures, conditions and approvals of municipal utilities; protection of existing infrastructure; and complete surface repair, restoration and maintenance. A public hearing will be required.

This work is necessary to connect Comcast's existing fiber network to 30 Washington Street, Somerville, MA.

Respectfully requested,

Department of Public Works

A large, stylized handwritten signature in black ink, appearing to read "Stan Koty".

Stan Koty, Commissioner

1 Franey Road Somerville, Massachusetts 02145

(617) 625-6600 Ext 5100 TTY (866) 808-4851 Fax (617) 623-7649

[www.somervillema.gov](http://www.somervillema.gov)



2016 NOV -1 A 8:52

CITY CLERK'S OFFICE  
SOMERVILLE, MA

Comcast  
David R. Flewelling  
Specialist 2 Construction  
9 Forbes Road, Suite 9B  
Woburn, MA 01801  
Cell – 617-279-7864  
[dave\\_flewelling@cable.comcast.com](mailto:dave_flewelling@cable.comcast.com)

November 1, 2016

Mr. John Long  
City Clerk  
Somerville City Hall  
93 Highland Avenue  
Somerville, MA 02143

RE: 30 Washington Street  
Grant of Location-Petition

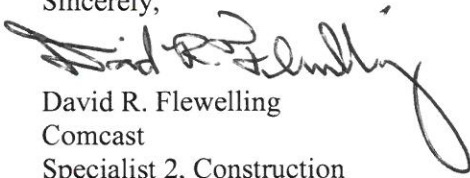
Dear Mr. Long:

Enclosed please find materials supporting Comcast request for a grant of location from the Somerville Board of Alderman. The work associated with the attached petition is for the purpose of installing a new underground conduit. Located on Washington Street and Innerbelt Road, to provide Comcast Service to the business located at 30 Washington Street.

I look forward to the opportunity to address this matter in further detail at the next Somerville Board of Alderman Meeting.

Should you have any questions or concerns, please feel free to contact me at (617) 279-7864.

Sincerely,



David R. Flewelling  
Comcast  
Specialist 2, Construction

Enclosure (5)

CC Somerville DPW Engineering  
CC Somerville Highway, Lights and Lines

**PETITION FOR GRANT OF LOCATION FOR  
WIRES, CABLES, POLES, PIERS, ABUTMENTS, CONDUITS OR FIXTURES**

**City of Somerville, Massachusetts  
In Board of Aldermen**

**Date November 1, 2016**

RESPECTFULLY REPRESENTS Comcast of Massachusetts/New Hampshire, LLC (hereinafter known as the PETITIONER), that it desires to construct upon, along, under or across the public way(s) of the City of Somerville, wires, cables, poles, piers, abutments, conduits or fixtures.

WHEREFORE, the PETITIONER prays that, after due notice and public hearing as provided by law, the Board of Aldermen may by Order grant to the PETITIONER permission to construct, in accordance with plan(s) dated October 31, 2016, the following (describe work):

Starting from the utility pole 358/3 on Washington Street and continuing on to Inner Belt Road. Excavating for the installation of a new underground conduit for a distance of 244' +/- . From Inner Belt Road excavation will continue on to the private property located at 30 Washington Street.

The PETITIONER understands and agrees that:

1. PETITIONER shall locate and complete all work as specified and approved by the City.
2. PETITIONER shall comply with the requirements of existing ordinances and such as may hereafter be adopted governing the construction .
3. PETITIONER shall perform all work to the requirements and satisfaction of the Department of Public Works or other such officer(s) as may be hereafter appointed by the City.

For the PETITIONER:

Signature:  \_\_\_\_\_

Name: David R. Flewelling

Title: Specialist 2, Construction

Mailing Address: 9 Forbes Rd Suite 9B

Woburn, MA 01801

Telephone November 1, 2016

**ORDER FOR GRANT OF LOCATION FOR  
WIRES, CABLES, POLES, PIERS, ABUTMENTS, CONDUITS OR FIXTURES**

**City of Somerville, Massachusetts  
In Board of Aldermen**

WHEREAS, Comcast of Massachusetts/New Hampshire, LLC (hereinafter known as the PETITIONER) has petitioned for permission to construct upon, along, under or across the public way(s) of the City of Somerville, the following (describe work):

Starting from the utility pole 358/3 on Washington Street and continuing on to Inner Belt Road. Excavating for the installation of a new underground conduit for a distance of 244'+/-. From Inner Belt Road excavation will continue on to the private property located at 30 Washington Street.

AND WHEREAS, notice has been given and a hearing held on said petition as provided by law;  
NOW THEREFORE BE IT

ORDERED that the PETITIONER be and hereby is granted permission by the Board of Aldermen to complete the construction described above, all in accordance with the following conditions:

1. PETITIONER shall locate and complete all work as shown by plan(s) dated \_\_\_\_\_, and as may have been amended by the City.
2. PETITIONER shall comply with the requirements of existing ordinances and such as may hereafter be adopted governing the construction.
3. PETITIONER shall perform all work to the requirements and satisfaction of the Department of Public Works or other such officer(s) as may be hereafter appointed by the City.

Approved by the Board of Aldermen on the \_\_\_\_\_ day of \_\_\_\_\_, 2016

A True Record. Attest: \_\_\_\_\_ Date: \_\_\_\_\_ City Clerk

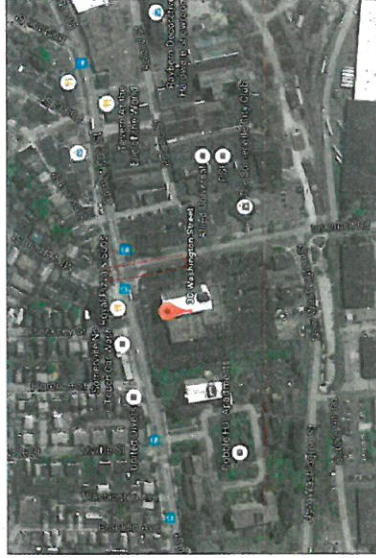
**Certificate**

Thereby certify that the foregoing Order was adopted by the Board of Aldermen on the \_\_\_\_\_ day of \_\_\_\_\_ 20 , after due notice and public hearing as prescribed by Section 22 of Chapter 166 of the General Laws and any additions or amendments thereto, said public hearing held in said City on the \_\_\_\_\_ day of \_\_\_\_\_ 20 , and recorded with the records of Grant of Location Orders of said City, in Book \_\_\_\_\_, Page \_\_\_\_\_

Certified. Attest: \_\_\_\_\_ City Date: \_\_\_\_\_  
Clerk



**PROPOSED CABLE INSTALLATION  
AT  
30 WASHINGTON ST  
SOMERVILLE, MA**



INDEX OF DRAWING	
SHEET NO.	DESCRIPTION
01	COVER SHEET
02	CIVIL PLAN
03	DETAILS

**AXIS**  
ENGINEERING GROUP  
1900 West Park Dr, Suite 105  
Westboro, MA 01581  
(508) 875-1221 [www.axisgroup.com](http://www.axisgroup.com)



**GENERAL NOTES**

1. THE LOCATION OF EXISTING UTILITIES SHOWN ON THIS PLAN ARE SHOWN IN AN APPROXIMATE MANNER AND MAY NOT BE EXACT. THE CONTRACTOR SHALL VERIFY THE LOCATION OF ALL EXISTING UTILITIES BEFORE COMMENCING WORK AND SHALL BE FULLY RESPONSIBLE FOR ANY AND ALL DAMAGE TO EXISTING UTILITIES. THE CONTRACTOR SHALL BE RESPONSIBLE FOR OBTAINING ALL NECESSARY PERMITS AND ALL INFORMATION FROM ALL UTILITIES CONCERNING THE LOCATION, DEPTH, AND CHARACTERISTICS OF ALL EXISTING UTILITIES.
2. WHERE AN EXISTING UTILITY IS FOUND TO CONFLICT WITH THE PROPOSED WORK, THE LOCATION, ELEVATION AND SIZE OF THE UTILITY SHALL BE ASSESSMENT TO BE MADE BY THE CONTRACTOR. THE CONTRACTOR SHALL BE RESPONSIBLE FOR OBTAINING ALL NECESSARY PERMITS AND ALL INFORMATION FROM ALL UTILITIES CONCERNING THE LOCATION, DEPTH, AND CHARACTERISTICS OF ALL EXISTING UTILITIES.
3. THE CONTRACTOR SHALL MAINTAIN A SEPARATION OF 18 INCHES OR MORE BETWEEN EXISTING WATER FACILITIES AND ANY OTHER PRIVATE UTILITIES BY THE UTILITY COMPANY.
4. THE CONTRACTOR SHALL MAINTAIN ALL ARRANGEMENTS FOR THE ALTERNATION AND ADJUSTMENT OF GAS, ELECTRIC, TELEPHONE AND ANY OTHER PRIVATE UTILITIES BY THE UTILITY COMPANY.
5. THE CONTRACTOR SHALL NOT DISTURB PUBLIC UTILITIES.
6. THE CONTRACTOR SHALL BE RESPONSIBLE FOR OBTAINING ALL NECESSARY PERMITS AND ALL INFORMATION FROM ALL UTILITIES CONCERNING THE LOCATION, DEPTH, AND CHARACTERISTICS OF ALL EXISTING UTILITIES. THE CONTRACTOR SHALL BE RESPONSIBLE FOR OBTAINING ALL NECESSARY PERMITS AND ALL INFORMATION FROM ALL UTILITIES CONCERNING THE LOCATION, DEPTH, AND CHARACTERISTICS OF ALL EXISTING UTILITIES.
7. THE CONTRACTOR SHALL BE RESPONSIBLE FOR OBTAINING ALL NECESSARY PERMITS AND ALL INFORMATION FROM ALL UTILITIES CONCERNING THE LOCATION, DEPTH, AND CHARACTERISTICS OF ALL EXISTING UTILITIES. THE CONTRACTOR SHALL BE RESPONSIBLE FOR OBTAINING ALL NECESSARY PERMITS AND ALL INFORMATION FROM ALL UTILITIES CONCERNING THE LOCATION, DEPTH, AND CHARACTERISTICS OF ALL EXISTING UTILITIES.
8. JOINTLY WITH THE CONTRACTOR, THE CONTRACTOR SHALL BE RESPONSIBLE FOR OBTAINING ALL NECESSARY PERMITS AND ALL INFORMATION FROM ALL UTILITIES CONCERNING THE LOCATION, DEPTH, AND CHARACTERISTICS OF ALL EXISTING UTILITIES. THE CONTRACTOR SHALL BE RESPONSIBLE FOR OBTAINING ALL NECESSARY PERMITS AND ALL INFORMATION FROM ALL UTILITIES CONCERNING THE LOCATION, DEPTH, AND CHARACTERISTICS OF ALL EXISTING UTILITIES.
9. THE CONTRACTOR SHALL BE RESPONSIBLE FOR OBTAINING ALL NECESSARY PERMITS AND ALL INFORMATION FROM ALL UTILITIES CONCERNING THE LOCATION, DEPTH, AND CHARACTERISTICS OF ALL EXISTING UTILITIES. THE CONTRACTOR SHALL BE RESPONSIBLE FOR OBTAINING ALL NECESSARY PERMITS AND ALL INFORMATION FROM ALL UTILITIES CONCERNING THE LOCATION, DEPTH, AND CHARACTERISTICS OF ALL EXISTING UTILITIES.
10. ALL EXISTING STREETS, COUNTY, CITY AND TOWN LOCATION LINES AND PRIVATE PROPERTY LINES HAVE BEEN FIELD-MEASURED FROM AVAILABLE RECORDS AND FIELD SURVEY DATA. THE CONTRACTOR SHALL BE RESPONSIBLE FOR OBTAINING ALL NECESSARY PERMITS AND ALL INFORMATION FROM ALL UTILITIES CONCERNING THE LOCATION, DEPTH, AND CHARACTERISTICS OF ALL EXISTING UTILITIES. THE CONTRACTOR SHALL BE RESPONSIBLE FOR OBTAINING ALL NECESSARY PERMITS AND ALL INFORMATION FROM ALL UTILITIES CONCERNING THE LOCATION, DEPTH, AND CHARACTERISTICS OF ALL EXISTING UTILITIES.
11. THE CONTRACTOR SHALL BE RESPONSIBLE FOR OBTAINING ALL NECESSARY PERMITS AND ALL INFORMATION FROM ALL UTILITIES CONCERNING THE LOCATION, DEPTH, AND CHARACTERISTICS OF ALL EXISTING UTILITIES. THE CONTRACTOR SHALL BE RESPONSIBLE FOR OBTAINING ALL NECESSARY PERMITS AND ALL INFORMATION FROM ALL UTILITIES CONCERNING THE LOCATION, DEPTH, AND CHARACTERISTICS OF ALL EXISTING UTILITIES.
12. THE CONTRACTOR SHALL BE RESPONSIBLE FOR OBTAINING ALL NECESSARY PERMITS AND ALL INFORMATION FROM ALL UTILITIES CONCERNING THE LOCATION, DEPTH, AND CHARACTERISTICS OF ALL EXISTING UTILITIES. THE CONTRACTOR SHALL BE RESPONSIBLE FOR OBTAINING ALL NECESSARY PERMITS AND ALL INFORMATION FROM ALL UTILITIES CONCERNING THE LOCATION, DEPTH, AND CHARACTERISTICS OF ALL EXISTING UTILITIES.
13. THE CONTRACTOR SHALL BE RESPONSIBLE FOR OBTAINING ALL NECESSARY PERMITS AND ALL INFORMATION FROM ALL UTILITIES CONCERNING THE LOCATION, DEPTH, AND CHARACTERISTICS OF ALL EXISTING UTILITIES. THE CONTRACTOR SHALL BE RESPONSIBLE FOR OBTAINING ALL NECESSARY PERMITS AND ALL INFORMATION FROM ALL UTILITIES CONCERNING THE LOCATION, DEPTH, AND CHARACTERISTICS OF ALL EXISTING UTILITIES.
14. THE CONTRACTOR SHALL BE RESPONSIBLE FOR OBTAINING ALL NECESSARY PERMITS AND ALL INFORMATION FROM ALL UTILITIES CONCERNING THE LOCATION, DEPTH, AND CHARACTERISTICS OF ALL EXISTING UTILITIES. THE CONTRACTOR SHALL BE RESPONSIBLE FOR OBTAINING ALL NECESSARY PERMITS AND ALL INFORMATION FROM ALL UTILITIES CONCERNING THE LOCATION, DEPTH, AND CHARACTERISTICS OF ALL EXISTING UTILITIES.
15. THE CONTRACTOR SHALL BE RESPONSIBLE FOR OBTAINING ALL NECESSARY PERMITS AND ALL INFORMATION FROM ALL UTILITIES CONCERNING THE LOCATION, DEPTH, AND CHARACTERISTICS OF ALL EXISTING UTILITIES. THE CONTRACTOR SHALL BE RESPONSIBLE FOR OBTAINING ALL NECESSARY PERMITS AND ALL INFORMATION FROM ALL UTILITIES CONCERNING THE LOCATION, DEPTH, AND CHARACTERISTICS OF ALL EXISTING UTILITIES.



**LEGEND**

1	UTILITY LINE
2	UTILITY LINE
3	UTILITY LINE
4	UTILITY LINE
5	UTILITY LINE
6	UTILITY LINE
7	UTILITY LINE
8	UTILITY LINE
9	UTILITY LINE
10	UTILITY LINE
11	UTILITY LINE
12	UTILITY LINE
13	UTILITY LINE
14	UTILITY LINE
15	UTILITY LINE
16	UTILITY LINE
17	UTILITY LINE
18	UTILITY LINE
19	UTILITY LINE
20	UTILITY LINE
21	UTILITY LINE
22	UTILITY LINE
23	UTILITY LINE
24	UTILITY LINE
25	UTILITY LINE
26	UTILITY LINE
27	UTILITY LINE
28	UTILITY LINE
29	UTILITY LINE
30	UTILITY LINE
31	UTILITY LINE
32	UTILITY LINE
33	UTILITY LINE
34	UTILITY LINE
35	UTILITY LINE
36	UTILITY LINE
37	UTILITY LINE
38	UTILITY LINE
39	UTILITY LINE
40	UTILITY LINE
41	UTILITY LINE
42	UTILITY LINE
43	UTILITY LINE
44	UTILITY LINE
45	UTILITY LINE
46	UTILITY LINE
47	UTILITY LINE
48	UTILITY LINE
49	UTILITY LINE
50	UTILITY LINE
51	UTILITY LINE
52	UTILITY LINE
53	UTILITY LINE
54	UTILITY LINE
55	UTILITY LINE
56	UTILITY LINE
57	UTILITY LINE
58	UTILITY LINE
59	UTILITY LINE
60	UTILITY LINE
61	UTILITY LINE
62	UTILITY LINE
63	UTILITY LINE
64	UTILITY LINE
65	UTILITY LINE
66	UTILITY LINE
67	UTILITY LINE
68	UTILITY LINE
69	UTILITY LINE
70	UTILITY LINE
71	UTILITY LINE
72	UTILITY LINE
73	UTILITY LINE
74	UTILITY LINE
75	UTILITY LINE
76	UTILITY LINE
77	UTILITY LINE
78	UTILITY LINE
79	UTILITY LINE
80	UTILITY LINE
81	UTILITY LINE
82	UTILITY LINE
83	UTILITY LINE
84	UTILITY LINE
85	UTILITY LINE
86	UTILITY LINE
87	UTILITY LINE
88	UTILITY LINE
89	UTILITY LINE
90	UTILITY LINE
91	UTILITY LINE
92	UTILITY LINE
93	UTILITY LINE
94	UTILITY LINE
95	UTILITY LINE
96	UTILITY LINE
97	UTILITY LINE
98	UTILITY LINE
99	UTILITY LINE
100	UTILITY LINE

**NOTES**

EXISTING UTILITIES SHOWN ARE APPROXIMATE AND NOT WARRANTED TO BE CORRECT. THE CONTRACTOR SHALL VERIFY THE LOCATION OF ALL EXISTING UTILITIES BEFORE COMMENCING WORK. THE CONTRACTOR SHALL BE RESPONSIBLE FOR OBTAINING ALL NECESSARY PERMITS AND ALL INFORMATION FROM ALL UTILITIES CONCERNING THE LOCATION, DEPTH, AND CHARACTERISTICS OF ALL EXISTING UTILITIES.

**CALL BEFORE YOU DIG**

800-4-A-DAWN (4328)

1-800-4-A-DAWN (4328)

**AXIS**  
ENGINEERING GROUP

**Comcast**

**CIVIL PLAN**  
WASHINGTON ST  
MOUNTAIN VIEW, CO

DATE: \_\_\_\_\_

SCALE: AS SHOWN

PROJECT NO: \_\_\_\_\_

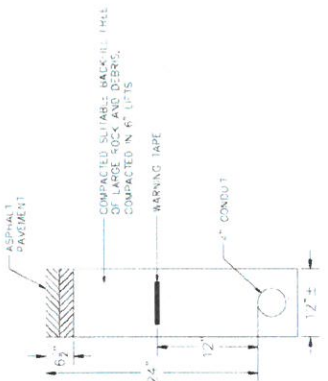
DATE: \_\_\_\_\_

SCALE: AS SHOWN

**GENERAL NOTES**

1. THE LOCATION OF EXISTING UNDERGROUND UTILITIES ARE SHOWN BY AN APPROXIMATE ONLY AND HAVE NOT BEEN VERIFIED BY THE CONTRACTOR. THE CONTRACTOR SHALL VERIFY THE LOCATION AND DEPTH OF ALL UTILITIES PRIOR TO ANY EXCAVATION. THE CONTRACTOR SHALL BE RESPONSIBLE FOR ANY AND ALL DAMAGE TO EXISTING UTILITIES. THE CONTRACTOR SHALL BE RESPONSIBLE FOR THE LOCATION, DEPTH AND USE OF ALL UTILITIES. THE CONTRACTOR SHALL BE RESPONSIBLE FOR THE LOCATION, DEPTH AND USE OF ALL UTILITIES. THE CONTRACTOR SHALL BE RESPONSIBLE FOR THE LOCATION, DEPTH AND USE OF ALL UTILITIES.
2. WHEN AN EXISTING UTILITY IS FOUND TO COLLIDE WITH THE PROPOSED WORK, THE LOCATION, DEPTH AND USE OF THE UTILITY SHALL BE ACCURATELY DETERMINED WITHOUT DELAY BY THE CONTRACTOR, AND THE INFORMATION FURNISHED TO THE CLIENT.
3. THE CONTRACTOR SHOULD MAINTAIN A SEPARATION OF 18 INCHES MIN. WHEN CROSSING EXISTING WATER UTILITIES AND ANY OTHER PRIVATE UTILITIES BY THE UTILITY COMPANY.
4. THE CONTRACTOR SHALL MAKE ALL ARRANGEMENTS FOR THE ALTERNATE AND MAINTENANCE LANE, INCLUDING TELEPHONE AND ANY OTHER PRIVATE UTILITIES BY THE UTILITY COMPANY.
5. THE CONTRACTOR SHALL NOT EXHAUST PAVEMENT.
6. THE CONTRACTOR SHALL BE RESPONSIBLE FOR THE LOCATION AND DEPTH OF ALL UTILITIES. THE CONTRACTOR SHALL BE RESPONSIBLE FOR THE LOCATION AND DEPTH OF ALL UTILITIES. THE CONTRACTOR SHALL BE RESPONSIBLE FOR THE LOCATION AND DEPTH OF ALL UTILITIES.
7. THE CONTRACTOR SHALL BE RESPONSIBLE FOR THE LOCATION AND DEPTH OF ALL UTILITIES. THE CONTRACTOR SHALL BE RESPONSIBLE FOR THE LOCATION AND DEPTH OF ALL UTILITIES. THE CONTRACTOR SHALL BE RESPONSIBLE FOR THE LOCATION AND DEPTH OF ALL UTILITIES.
8. JOINTS BETWEEN NEW BELT/CONCRETE ROADWAY PAVEMENT AND EXISTING PAVEMENT SHALL BE SEALED WITH BITUMEN SEALANT. THE CONTRACTOR SHALL BE RESPONSIBLE FOR THE LOCATION AND DEPTH OF ALL UTILITIES. THE CONTRACTOR SHALL BE RESPONSIBLE FOR THE LOCATION AND DEPTH OF ALL UTILITIES. THE CONTRACTOR SHALL BE RESPONSIBLE FOR THE LOCATION AND DEPTH OF ALL UTILITIES.
9. THE CONTRACTOR SHALL BE RESPONSIBLE FOR THE LOCATION AND DEPTH OF ALL UTILITIES. THE CONTRACTOR SHALL BE RESPONSIBLE FOR THE LOCATION AND DEPTH OF ALL UTILITIES. THE CONTRACTOR SHALL BE RESPONSIBLE FOR THE LOCATION AND DEPTH OF ALL UTILITIES.
10. THE CONTRACTOR SHALL BE RESPONSIBLE FOR THE LOCATION AND DEPTH OF ALL UTILITIES. THE CONTRACTOR SHALL BE RESPONSIBLE FOR THE LOCATION AND DEPTH OF ALL UTILITIES. THE CONTRACTOR SHALL BE RESPONSIBLE FOR THE LOCATION AND DEPTH OF ALL UTILITIES.
11. ALL EXISTING STATE, COUNTY, CITY, AND TOWN LOCATION MARKS AND PRIVATE PROPERTY LINES HAVE BEEN ESTABLISHED BY THE CONTRACTOR. THE CONTRACTOR SHALL BE RESPONSIBLE FOR THE LOCATION AND DEPTH OF ALL UTILITIES. THE CONTRACTOR SHALL BE RESPONSIBLE FOR THE LOCATION AND DEPTH OF ALL UTILITIES. THE CONTRACTOR SHALL BE RESPONSIBLE FOR THE LOCATION AND DEPTH OF ALL UTILITIES.
12. THE CONTRACTOR SHALL BE RESPONSIBLE FOR THE LOCATION AND DEPTH OF ALL UTILITIES. THE CONTRACTOR SHALL BE RESPONSIBLE FOR THE LOCATION AND DEPTH OF ALL UTILITIES. THE CONTRACTOR SHALL BE RESPONSIBLE FOR THE LOCATION AND DEPTH OF ALL UTILITIES.

\* THIS DRAWING IS NOT TO BE USED FOR ANY OTHER PROJECTS.  
 \*\* THIS DRAWING IS NOT TO BE USED FOR ANY OTHER PROJECTS.  
 \*\*\* THIS DRAWING IS NOT TO BE USED FOR ANY OTHER PROJECTS.

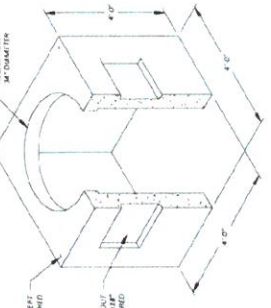


**ROADWAY PATCH AND DUCT BANK  
INSTALLATION DETAIL**

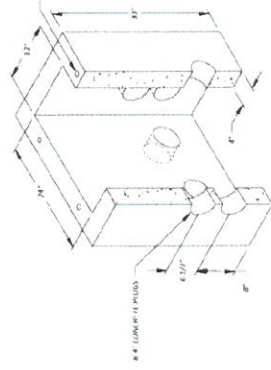
N.T.S.

**TRENCH DETAIL NOTES:**

1. 24" MAXIMUM FROM TOP OF CONDUIT TO SURFACE
2. 12" FROM TOP OF CONDUIT TO METALLIC
3. REPAIR SIDEWALKS AND WALKWAYS WITH SAVED MATERIALS EXISTING.



**3'x3'x3' I.D. MANHOLE W/6" WALLS & ROOF**  
 CHASE STANDARD 1500 LB.  
 PER SQUARE FOOT A.D.O.T.  
 REGULATIONS FOR ROADWAY LOADINGS  
 N.T.S.



**TYPICAL 12'x24' HANDHOLE**  
 MUST MEET OR EXCEED ALL  
 STATE, LOCAL DOT REGS. FOR  
 ROADWAY LOADINGS  
 N.T.S.

LEGEND	
1	UTILITY BOX
2	UTILITY TRENCH
3	UTILITY TRENCH
4	UTILITY TRENCH
5	UTILITY TRENCH
6	UTILITY TRENCH
7	UTILITY TRENCH
8	UTILITY TRENCH
9	UTILITY TRENCH
10	UTILITY TRENCH
11	UTILITY TRENCH
12	UTILITY TRENCH
13	UTILITY TRENCH
14	UTILITY TRENCH
15	UTILITY TRENCH
16	UTILITY TRENCH
17	UTILITY TRENCH
18	UTILITY TRENCH
19	UTILITY TRENCH
20	UTILITY TRENCH
21	UTILITY TRENCH
22	UTILITY TRENCH
23	UTILITY TRENCH
24	UTILITY TRENCH
25	UTILITY TRENCH
26	UTILITY TRENCH
27	UTILITY TRENCH
28	UTILITY TRENCH
29	UTILITY TRENCH
30	UTILITY TRENCH
31	UTILITY TRENCH
32	UTILITY TRENCH
33	UTILITY TRENCH
34	UTILITY TRENCH
35	UTILITY TRENCH
36	UTILITY TRENCH
37	UTILITY TRENCH
38	UTILITY TRENCH
39	UTILITY TRENCH
40	UTILITY TRENCH
41	UTILITY TRENCH
42	UTILITY TRENCH
43	UTILITY TRENCH
44	UTILITY TRENCH
45	UTILITY TRENCH
46	UTILITY TRENCH
47	UTILITY TRENCH
48	UTILITY TRENCH
49	UTILITY TRENCH
50	UTILITY TRENCH

CALL BEFORE YOU DIG  
 800-4-A-DAWN  
 1-800-4-A-DAWN  
 1-800-4-A-DAWN

**AXIS**  
 ENGINEERING GROUP

**Comcast**

DETAILED  
 11/11/2011

DRAWN BY: [Name]  
 CHECKED BY: [Name]  
 DATE: 11/11/2011



