

ALD. BALLANTYNE  
UTILITY REP



CITY OF SOMERVILLE, MASSACHUSETTS  
CITY CLERK'S OFFICE  
JOSEPH A. CURTATONE  
MAYOR

JOHN J. LONG  
CITY CLERK

November 10, 2017

**NOTICE**

You are hereby notified that the Board of Aldermen will hold a Public Hearing on the following Petition. You are receiving this Notice because City records indicate that you own property that abuts the work that is being proposed. You and other members of the public are invited to attend and be heard at this Hearing.

**PETITION:** Comcast seeks a Grant of Location to install 95 feet of conduit in Paulina Street from Pole #182/6 to a new manhole at the intersection of Paulina Street and Broadway, and then from that manhole another 197 feet of conduit in Broadway to a point of pickup at 1060 Broadway.

**PLACE:** Aldermanic Chambers, 2<sup>nd</sup> Floor, City Hall, 93 Highland Avenue, Somerville.

**TIME:** Tuesday, November 21, 2017, at 7:00 PM.

**PURPOSE:** The work is necessary to provide service to 1060 Broadway.

John J. Long  
City Clerk



CITY OF SOMERVILLE, MASSACHUSETTS

DEPARTMENT OF PUBLIC WORKS

JOSEPH A. CURTATONE  
MAYOR

**STAN KOTY**  
*Commissioner*

**RICK WILLETTE**  
*Director of Operations*

October 27, 2017

The Honorable Board of Aldermen  
City Hall  
93 Highland Avenue  
Somerville MA, 02143

**RE: Grant of Location**  
**Comcast**  
**1060 Broadway**

Dear Board Members:

Preliminary approval is recommended for the petition and plan of Comcast to install approximately 95-feet of (2) 4 inch PVC conduit from utility pole #182/6 in Paulina Street to a proposed 3-foot by 3-foot manhole and approximately 197-feet of (2) 4 inch PVC conduit from the proposed 3-foot by 3-foot manhole to 1060 Broadway. Both Paulina Street and Broadway are public ways in Somerville, MA.

This recommendation is made with reference to Comcast's letter of October 18, 2017 and plan of October 18, 2017, upon stipulation that the Grant of Location is subject to: a reservation of rescission by the Board of Aldermen; indemnification of the City for all liability arising from said Grant; all permit procedures, conditions and approvals of municipal utilities; protection of existing infrastructure; and complete surface repair, restoration and maintenance. A public hearing will be required.

This work is necessary to bring Comcast's network to 1060 Broadway.

Respectfully requested,

Department of Public Works

  
Stan Koty, Commissioner

1 Franey Road Somerville, Massachusetts 02145

(617) 625-6600 Ext 5100 TTY (866) 808-4851 Fax (617) 623-7649

[www.somervillema.gov](http://www.somervillema.gov)



**CITY OF SOMERVILLE**  
Commonwealth of Massachusetts  
93 Highland Avenue  
Somerville, MA 02143  
(617) 625-6600

## **BUSINESS LICENSE APPLICATION - Grant of Location**

File #: 17-019751

License #: BL17-000149

Address: 1060 BROADWAY

Licensee: Dave Flewelling Comcast of Massachusetts/ New Hampshire, LLC

DBA Name: Comcast Cable Communications Management, LLC

Business Ownership Type: LLC

Legal Name of Entity: Comcast Cable Communications Management, LLC

Owners/Officers: Brian Roberts, Brian Roberts, Brian Roberts, Brian Roberts

### **License Information:**

**Grant of location issued to:** Comcast Cable Communications Management, LLC

**Describe the reason for the work, and the intended beneficiaries:** New underground to provide the Comcast Service to 1060 Broadway Somerville

**Insert here the same detailed description of the work as appears in the attached Grant of Location Order:** Paulina Street: Starting at Utility Pole No. 182/6 placing two PVC conduits 95 feet +/- to a proposed 3-foot manhole. Broadway: From the proposed 3-foot manhole placing two PVC conduits 197 feet to 1060 Broadway.

Approval Conditions:

**PETITION FOR GRANT OF LOCATION FOR  
WIRES, CABLES, POLES, PIERS, ABUTMENTS, CONDUITS OR FIXTURES**

**City of Somerville, Massachusetts  
In Board of Aldermen**

**Date October 18, 2017**

RESPECTFULLY REPRESENTS Comcast Cable Communications Management LLC (hereinafter known as the PETITIONER), that it desires to construct upon, along, under or across the public way(s) of the City of Somerville, wires, cables, poles, piers, abutments, conduits or fixtures.

WHEREFORE, the PETITIONER prays that, after due notice and public hearing as provided by law, the Board of Aldermen may by Order grant to the PETITIONER permission to construct, in accordance with plan(s) dated October 18, 2017, the following (describe work):

Paulina Street: Starting at Utility Pole No. 182/6 placing (2) 4" PVC conduits 95'+/- to a proposed 3'x3' manhole.  
Broadway: From the proposed 3'x3' manhole placing (2) 4" PVC conduits 197'+/\_ to 1060 Broadway.

The PETITIONER understands and agrees that:

1. PETITIONER shall locate and complete all work as specified and approved by the City.
2. PETITIONER shall comply with the requirements of existing ordinances and such as may hereafter be adopted governing the construction.
3. PETITIONER shall perform all work to the requirements and satisfaction of the Department of Public Works or other such officer(s) as may be hereafter appointed by the City.

For the PETITIONER:

Signature: 

Name: David R. Flewelling

Title: Specialist 2, Construction

Mailing Address: 9 Forbes Rd Suite 9B

Woburn, MA 01801

Telephone 617-279-7864

**ORDER FOR GRANT OF LOCATION FOR  
WIRES, CABLES, POLES, PIERS, ABUTMENTS, CONDUITS OR FIXTURES**

**City of Somerville, Massachusetts  
In Board of Aldermen**

WHEREAS, Comcast Cable Communications Management, LLC (hereinafter known as the PETITIONER) has petitioned for permission to construct upon, along, under or across the public way(s) of the City of Somerville, the following (describe work):

Paulina Street: Starting at Utility Pole No. 182/6 placing (2) 4" PVC conduits 95'+/- to a proposed 3'x3' manhole.  
Broadway: From the proposed 3'x3' manhole placing (2) 4" PVC conduits 197'+/- to 1060 Broadway.

AND WHEREAS, notice has been given and a hearing held on said petition as provided by law;  
NOW THEREFORE BE IT

ORDERED that the PETITIONER be and hereby is granted permission by the Board of Aldermen to complete the construction described above, all in accordance with the following conditions:

1. PETITIONER shall locate and complete all work as shown by plan(s) dated \_\_\_\_\_, and as may have been amended by the City.
2. PETITIONER shall comply with the requirements of existing ordinances and such as may hereafter be adopted governing the construction.
3. PETITIONER shall perform all work to the requirements and satisfaction of the Department of Public Works or other such officer(s) as may be hereafter appointed by the City.

Approved by the Board of Aldermen on the \_\_\_\_\_ day of \_\_\_\_\_, 2017

A True Record. Attest: \_\_\_\_\_ Date: \_\_\_\_\_ City Clerk

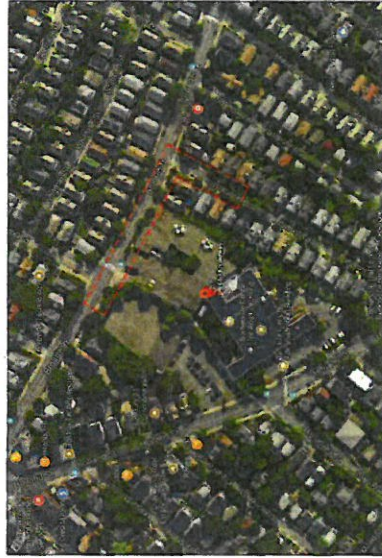
**Certificate**

I hereby certify that the foregoing Order was adopted by the Board of Aldermen on the \_\_\_\_\_ day of \_\_\_\_\_ 2017, after due notice and public hearing as prescribed by Section 22 of Chapter 166 of the General Laws and any additions or amendments thereto, said public hearing held in said City on the \_\_\_\_\_ day of \_\_\_\_\_ 2017, and recorded with the records of Grant of Location Orders of said City, in Book \_\_\_\_\_, Page \_\_\_\_\_

Certified. Attest: \_\_\_\_\_ City Clerk Date: \_\_\_\_\_



**PROPOSED CABLE INSTALLATION  
AT  
1060 BROADWAY  
SOMERVILLE, MA**

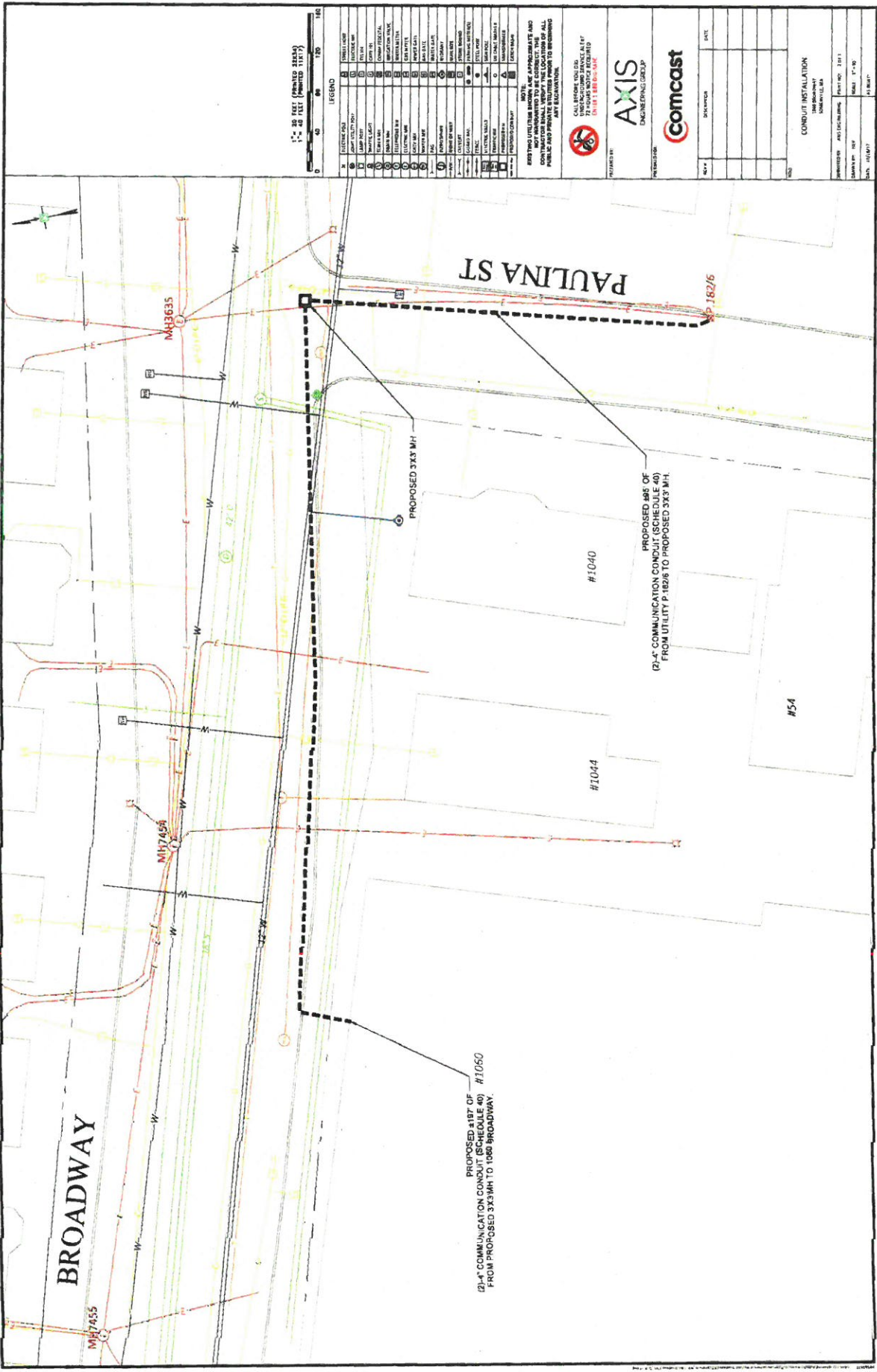


**LOCUS  
N.T.S**

**INDEX OF DRAWING**

SHEET NO.	DESCRIPTION
01	COVER SHEET
02	CONDUIT INSTALLATION
03	GENERAL NOTES AND DETAILS

**AXIS**  
ENGINEERING GROUP  
1900 West Park Dr. Suite 185  
Westboro, MA 01581  
(508) 870-7221 [www.axisgroup.com](http://www.axisgroup.com)



BROADWAY

PROPOSED 12" OF  
12" COMMUNICATION CONDUIT (SCHEDULE 40)  
FROM PROPOSED 3X3 MH TO 1080 BROADWAY.

PROPOSED 3X3 MH

PROPOSED 12" OF  
12" COMMUNICATION CONDUIT (SCHEDULE 40)  
FROM UTILITY P-182/6 TO PROPOSED 3X3 MH.

PAULINA ST



LEGEND

1	UTILITY POLE
2	UTILITY TOWER
3	UTILITY MANHOLE
4	UTILITY VALVE
5	UTILITY BOX
6	UTILITY ENCLOSURE
7	UTILITY STRUCTURE
8	UTILITY EQUIPMENT
9	UTILITY CONDUIT
10	UTILITY TRUNK
11	UTILITY MAIN
12	UTILITY BRANCH
13	UTILITY SERVICE
14	UTILITY TIE
15	UTILITY CROSSING
16	UTILITY UNDERPASS
17	UTILITY OVERPASS
18	UTILITY TRENCH
19	UTILITY DUCT
20	UTILITY RACEWAY
21	UTILITY TRAY
22	UTILITY CABLE
23	UTILITY FIBER
24	UTILITY COAXIAL
25	UTILITY POWER
26	UTILITY TELEPHONE
27	UTILITY CABLE TV
28	UTILITY DATA
29	UTILITY VIDEO
30	UTILITY AUDIO
31	UTILITY SIGNAL
32	UTILITY CONTROL
33	UTILITY SECURITY
34	UTILITY ACCESS
35	UTILITY IDENTIFICATION
36	UTILITY MARKING
37	UTILITY PROTECTION
38	UTILITY SURROUNDINGS
39	UTILITY ENVIRONMENT
40	UTILITY CLIMATE
41	UTILITY SOILS
42	UTILITY VEGETATION
43	UTILITY ANIMALS
44	UTILITY HUMANS
45	UTILITY PLANTS
46	UTILITY FUNGI
47	UTILITY BACTERIA
48	UTILITY VIRUSES
49	UTILITY PARASITES
50	UTILITY PATHOGENS
51	UTILITY ANTIBIOTICS
52	UTILITY ANTIVIRALS
53	UTILITY ANTIFUNGALS
54	UTILITY ANTI-PROLIFERATIVES
55	UTILITY IMMUNOSUPPRESSANTS
56	UTILITY CHEMOTHERAPY
57	UTILITY SURGERY
58	UTILITY TRANSPLANTATION
59	UTILITY ORGAN DONATION
60	UTILITY TISSUE ENGINEERING
61	UTILITY CELL THERAPY
62	UTILITY GENE THERAPY
63	UTILITY CRISPR
64	UTILITY NANOTECHNOLOGY
65	UTILITY QUANTUM COMPUTING
66	UTILITY ARTIFICIAL INTELLIGENCE
67	UTILITY ROBOTICS
68	UTILITY AUTOMATION
69	UTILITY CYBERNETICS
70	UTILITY BIOMIMETICS
71	UTILITY SYNTHETIC BIOLOGY
72	UTILITY NEUROSCIENCE
73	UTILITY COGNITIVE SCIENCE
74	UTILITY PSYCHOLOGY
75	UTILITY EDUCATION
76	UTILITY TRAINING
77	UTILITY RESEARCH
78	UTILITY DEVELOPMENT
79	UTILITY INNOVATION
80	UTILITY ENTREPRENEURSHIP
81	UTILITY VENTURE CAPITAL
82	UTILITY INVESTMENT
83	UTILITY FINANCING
84	UTILITY LEGAL
85	UTILITY POLITICAL
86	UTILITY SOCIAL
87	UTILITY CULTURAL
88	UTILITY ARTS
89	UTILITY RECREATION
90	UTILITY SPORTS
91	UTILITY ENTERTAINMENT
92	UTILITY MEDIA
93	UTILITY COMMUNICATIONS
94	UTILITY INFORMATION TECHNOLOGY
95	UTILITY TELECOMMUNICATIONS
96	UTILITY BROADCASTING
97	UTILITY JOURNALISM
98	UTILITY PUBLISHING
99	UTILITY DESIGN
100	UTILITY ARCHITECTURE
101	UTILITY ENGINEERING
102	UTILITY SCIENCE
103	UTILITY HISTORY
104	UTILITY GEOGRAPHY
105	UTILITY ENVIRONMENTAL STUDIES
106	UTILITY SOCIAL SCIENCES
107	UTILITY HUMANITIES
108	UTILITY LIBERAL ARTS
109	UTILITY PROFESSIONAL STUDIES
110	UTILITY VOCATIONAL TRAINING
111	UTILITY TECHNICAL EDUCATION
112	UTILITY ADULT EDUCATION
113	UTILITY DISTANCE EDUCATION
114	UTILITY ONLINE EDUCATION
115	UTILITY MOBILE EDUCATION
116	UTILITY OPEN EDUCATION
117	UTILITY SELF-DIRECTED EDUCATION
118	UTILITY INDEPENDENT EDUCATION
119	UTILITY ALTERNATIVE EDUCATION
120	UTILITY UNUSUAL EDUCATION
121	UTILITY UNCONVENTIONAL EDUCATION
122	UTILITY UNORTHODOX EDUCATION
123	UTILITY UNORTHODOX EDUCATION
124	UTILITY UNORTHODOX EDUCATION
125	UTILITY UNORTHODOX EDUCATION

NOTE:  
1. ALL UTILITIES SHOWN ARE BASED ON RECORD DRAWINGS AND FIELD SURVEY DATA.  
2. THE LOCATION AND DEPTH OF UTILITIES MAY VARY FROM THE INFORMATION SHOWN ON THESE DRAWINGS.  
3. THE CONTRACTOR SHALL VERIFY THE LOCATION AND DEPTH OF ALL UTILITIES PRIOR TO ANY EXCAVATION.

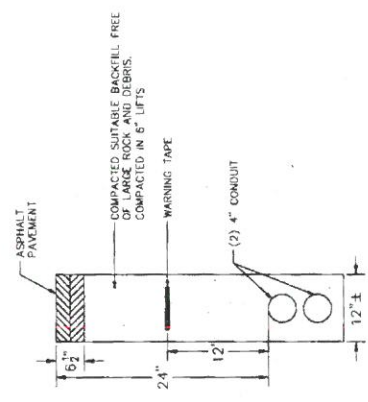
CALL BEFORE YOU DIG.  
UNDEGROUND UTILITY LOCATING SERVICE  
1-800-4-A-DIG  
OR 1-800-3-3-3-3



DATE	
REVISION	
NO.	
CONDUIT INSTALLATION	
1080 BROADWAY	
NORFOLK, VA	
PROJECT NO.	1080 BROADWAY
DATE	10/10/17
DRAWN BY	JH
CHECKED BY	JH

**GENERAL NOTES**

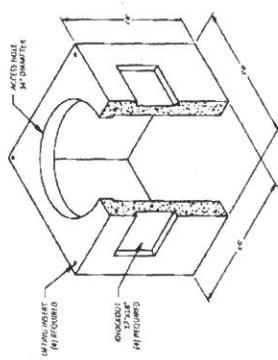
1. THE LOCATION OF EXISTING UTILITIES ARE SHOWN IN AN APPROXIMATE MANNER AND HAVE NOT BEEN INDICATED BY THE CONTRACTOR'S FIELD SURVEY. THE CONTRACTOR SHALL DETERMINE THE EXACT LOCATION OF ALL UTILITIES AND SHALL BE RESPONSIBLE FOR ANY DAMAGE TO EXISTING UTILITIES. ALL DAMAGES WHICH MAY BE OCCURRED BY THE CONTRACTOR'S FAILURE TO EXACTLY LOCATE AND PROTECT ANY AND ALL UNDETERMINED UTILITIES.
2. THE CONTRACTOR SHALL BE RESPONSIBLE FOR THE PROTECTION OF ALL EXISTING UTILITIES AND FOR ALL DAMAGES WHICH MAY BE OCCURRED BY THE CONTRACTOR'S FAILURE TO EXACTLY LOCATE AND PROTECT ANY AND ALL UNDETERMINED UTILITIES.
3. THE CONTRACTOR SHALL MAINTAIN A SEPARATION OF 24 INCHES FROM ANY EXISTING UTILITIES, TELEPHONE LINES AND OTHER UTILITIES IN THE UTILITY COMPANY.
4. THE CONTRACTOR SHALL NOT DISTURB PUBLIC TREES AND SHRUBS.
5. AREA OUTSIDE THE LIMITS OF PROPOSED WORK SHALL BE RESTORED BY THE CONTRACTOR TO THE ORIGINAL CONDITION AT HIS EXPENSE. TO THE EXTENT OF THE CONTRACTOR'S FAILURE TO RESTORE THE ORIGINAL CONDITION, THE CONTRACTOR SHALL BE RESPONSIBLE FOR THE COST OF REPAIRS AND SHALL BE RESPONSIBLE FOR THE COST OF REMEDIATION OF ANY DAMAGE TO THE ORIGINAL CONDITION.
6. THE CONTRACTOR SHALL MAINTAIN A SEPARATION OF 24 INCHES FROM ANY EXISTING UTILITIES, TELEPHONE LINES AND OTHER UTILITIES IN THE UTILITY COMPANY.
7. THE CONTRACTOR SHALL MAINTAIN A SEPARATION OF 24 INCHES FROM ANY EXISTING UTILITIES, TELEPHONE LINES AND OTHER UTILITIES IN THE UTILITY COMPANY.
8. THE CONTRACTOR SHALL MAINTAIN A SEPARATION OF 24 INCHES FROM ANY EXISTING UTILITIES, TELEPHONE LINES AND OTHER UTILITIES IN THE UTILITY COMPANY.
9. THE CONTRACTOR SHALL MAINTAIN A SEPARATION OF 24 INCHES FROM ANY EXISTING UTILITIES, TELEPHONE LINES AND OTHER UTILITIES IN THE UTILITY COMPANY.
10. THE CONTRACTOR SHALL MAINTAIN A SEPARATION OF 24 INCHES FROM ANY EXISTING UTILITIES, TELEPHONE LINES AND OTHER UTILITIES IN THE UTILITY COMPANY.
11. THE CONTRACTOR SHALL MAINTAIN A SEPARATION OF 24 INCHES FROM ANY EXISTING UTILITIES, TELEPHONE LINES AND OTHER UTILITIES IN THE UTILITY COMPANY.
12. THE CONTRACTOR SHALL MAINTAIN A SEPARATION OF 24 INCHES FROM ANY EXISTING UTILITIES, TELEPHONE LINES AND OTHER UTILITIES IN THE UTILITY COMPANY.
13. THE CONTRACTOR SHALL MAINTAIN A SEPARATION OF 24 INCHES FROM ANY EXISTING UTILITIES, TELEPHONE LINES AND OTHER UTILITIES IN THE UTILITY COMPANY.
14. THE CONTRACTOR SHALL MAINTAIN A SEPARATION OF 24 INCHES FROM ANY EXISTING UTILITIES, TELEPHONE LINES AND OTHER UTILITIES IN THE UTILITY COMPANY.
15. THE CONTRACTOR SHALL MAINTAIN A SEPARATION OF 24 INCHES FROM ANY EXISTING UTILITIES, TELEPHONE LINES AND OTHER UTILITIES IN THE UTILITY COMPANY.
16. THE CONTRACTOR SHALL MAINTAIN A SEPARATION OF 24 INCHES FROM ANY EXISTING UTILITIES, TELEPHONE LINES AND OTHER UTILITIES IN THE UTILITY COMPANY.
17. THE CONTRACTOR SHALL MAINTAIN A SEPARATION OF 24 INCHES FROM ANY EXISTING UTILITIES, TELEPHONE LINES AND OTHER UTILITIES IN THE UTILITY COMPANY.
18. THE CONTRACTOR SHALL MAINTAIN A SEPARATION OF 24 INCHES FROM ANY EXISTING UTILITIES, TELEPHONE LINES AND OTHER UTILITIES IN THE UTILITY COMPANY.
19. THE CONTRACTOR SHALL MAINTAIN A SEPARATION OF 24 INCHES FROM ANY EXISTING UTILITIES, TELEPHONE LINES AND OTHER UTILITIES IN THE UTILITY COMPANY.
20. THE CONTRACTOR SHALL MAINTAIN A SEPARATION OF 24 INCHES FROM ANY EXISTING UTILITIES, TELEPHONE LINES AND OTHER UTILITIES IN THE UTILITY COMPANY.
21. THE CONTRACTOR SHALL MAINTAIN A SEPARATION OF 24 INCHES FROM ANY EXISTING UTILITIES, TELEPHONE LINES AND OTHER UTILITIES IN THE UTILITY COMPANY.
22. THE CONTRACTOR SHALL MAINTAIN A SEPARATION OF 24 INCHES FROM ANY EXISTING UTILITIES, TELEPHONE LINES AND OTHER UTILITIES IN THE UTILITY COMPANY.
23. THE CONTRACTOR SHALL MAINTAIN A SEPARATION OF 24 INCHES FROM ANY EXISTING UTILITIES, TELEPHONE LINES AND OTHER UTILITIES IN THE UTILITY COMPANY.
24. THE CONTRACTOR SHALL MAINTAIN A SEPARATION OF 24 INCHES FROM ANY EXISTING UTILITIES, TELEPHONE LINES AND OTHER UTILITIES IN THE UTILITY COMPANY.
25. THE CONTRACTOR SHALL MAINTAIN A SEPARATION OF 24 INCHES FROM ANY EXISTING UTILITIES, TELEPHONE LINES AND OTHER UTILITIES IN THE UTILITY COMPANY.



**ROADWAY PATCH AND DUCT BANK  
INSTALLATION DETAIL**  
N.T.S.

**TRENCH DETAIL NOTES:**

1. 24" MAXIMUM FROM TOP OF CONDUIT TO SURFACE.
2. 12" FROM TOP OF CONDUIT TO METALLIC WARNING TAPE PLACED ABOVE.
3. REPAIR SIDEWALKS AND WALKWAYS WITH SAME MATERIALS AS EXISTING.



**3x3x3 INCH MANHOLE WALLS & ROOF**  
CHASSIS STANDARD - 3,900 LBS  
MUST MEET OR EXCEED ALL STATE, LOCAL, D.O.T.  
REGULATIONS FOR ROADWAY LOADINGS  
N.T.S.

**LEGEND**

SYMBOL	DESCRIPTION
1	EXISTING ROAD
2	EXISTING SIDEWALK
3	EXISTING CURB
4	EXISTING DRIVE
5	EXISTING UTILITY
6	EXISTING MANHOLE
7	EXISTING TRENCH
8	EXISTING DUCT BANK
9	EXISTING CONDUIT
10	EXISTING CEMENT
11	EXISTING ASPHALT
12	EXISTING GRAVEL
13	EXISTING SAND
14	EXISTING SOIL
15	EXISTING ROCK
16	EXISTING TREE
17	EXISTING SHRUB
18	EXISTING FENCE
19	EXISTING SIGN
20	EXISTING LIGHT
21	EXISTING SIGN
22	EXISTING SIGN
23	EXISTING SIGN
24	EXISTING SIGN
25	EXISTING SIGN
26	EXISTING SIGN
27	EXISTING SIGN
28	EXISTING SIGN
29	EXISTING SIGN
30	EXISTING SIGN
31	EXISTING SIGN
32	EXISTING SIGN
33	EXISTING SIGN
34	EXISTING SIGN
35	EXISTING SIGN
36	EXISTING SIGN
37	EXISTING SIGN
38	EXISTING SIGN
39	EXISTING SIGN
40	EXISTING SIGN
41	EXISTING SIGN
42	EXISTING SIGN
43	EXISTING SIGN
44	EXISTING SIGN
45	EXISTING SIGN
46	EXISTING SIGN
47	EXISTING SIGN
48	EXISTING SIGN
49	EXISTING SIGN
50	EXISTING SIGN

**NOTES:**  
FOR THESE SPECIFICATIONS APPROXIMATELY 10% OF THE TOTAL CONTRACT VALUE SHALL BE PAID UPON COMPLETION OF ALL PUBLIC AND PRIVATE UTILITIES PRIOR TO BEGINNING ANY CONSTRUCTION.

**CALL BEFORE YOU DIG**  
800-4-A-SAFE  
800-427-2863

**AXIS**  
ENGINEERING GROUP

**Comcast**

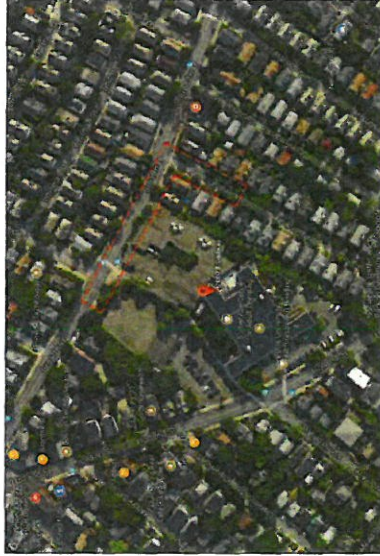
**GENERAL NOTES AND DETAILS**

NO.	DESCRIPTION	DATE
1	ISSUED FOR PERMIT	08/15/18
2	ISSUED FOR PERMIT	08/15/18
3	ISSUED FOR PERMIT	08/15/18
4	ISSUED FOR PERMIT	08/15/18
5	ISSUED FOR PERMIT	08/15/18
6	ISSUED FOR PERMIT	08/15/18
7	ISSUED FOR PERMIT	08/15/18
8	ISSUED FOR PERMIT	08/15/18
9	ISSUED FOR PERMIT	08/15/18
10	ISSUED FOR PERMIT	08/15/18
11	ISSUED FOR PERMIT	08/15/18
12	ISSUED FOR PERMIT	08/15/18
13	ISSUED FOR PERMIT	08/15/18
14	ISSUED FOR PERMIT	08/15/18
15	ISSUED FOR PERMIT	08/15/18
16	ISSUED FOR PERMIT	08/15/18
17	ISSUED FOR PERMIT	08/15/18
18	ISSUED FOR PERMIT	08/15/18
19	ISSUED FOR PERMIT	08/15/18
20	ISSUED FOR PERMIT	08/15/18
21	ISSUED FOR PERMIT	08/15/18
22	ISSUED FOR PERMIT	08/15/18
23	ISSUED FOR PERMIT	08/15/18
24	ISSUED FOR PERMIT	08/15/18
25	ISSUED FOR PERMIT	08/15/18
26	ISSUED FOR PERMIT	08/15/18
27	ISSUED FOR PERMIT	08/15/18
28	ISSUED FOR PERMIT	08/15/18
29	ISSUED FOR PERMIT	08/15/18
30	ISSUED FOR PERMIT	08/15/18
31	ISSUED FOR PERMIT	08/15/18
32	ISSUED FOR PERMIT	08/15/18
33	ISSUED FOR PERMIT	08/15/18
34	ISSUED FOR PERMIT	08/15/18
35	ISSUED FOR PERMIT	08/15/18
36	ISSUED FOR PERMIT	08/15/18
37	ISSUED FOR PERMIT	08/15/18
38	ISSUED FOR PERMIT	08/15/18
39	ISSUED FOR PERMIT	08/15/18
40	ISSUED FOR PERMIT	08/15/18
41	ISSUED FOR PERMIT	08/15/18
42	ISSUED FOR PERMIT	08/15/18
43	ISSUED FOR PERMIT	08/15/18
44	ISSUED FOR PERMIT	08/15/18
45	ISSUED FOR PERMIT	08/15/18
46	ISSUED FOR PERMIT	08/15/18
47	ISSUED FOR PERMIT	08/15/18
48	ISSUED FOR PERMIT	08/15/18
49	ISSUED FOR PERMIT	08/15/18
50	ISSUED FOR PERMIT	08/15/18





**TRAFFIC MANAGEMENT PLAN  
AT  
1060 BROADWAY  
SOMERVILLE, MA**



**LOCUS  
N.T.S**

**INDEX OF DRAWING**

SHEET NO.	DESCRIPTION
01	COVER SHEET
02	TRAFFIC CONTROL 01
03	TRAFFIC CONTROL 02

**AXIS**  
ENGINEERING GROUP  
1500 West 17th St., Suite 105  
Wichita, MA 01561  
(508) 870-7221 [www.axisgroup.com](http://www.axisgroup.com)



**TRAFFIC CONTROL LEGEND**

TRAFFIC CONTROL	TRAFFIC CONTROL
TRAFFIC CONTROL	TRAFFIC CONTROL

**LEGEND**

1	TRAFFIC CONTROL
2	TRAFFIC CONTROL
3	TRAFFIC CONTROL
4	TRAFFIC CONTROL
5	TRAFFIC CONTROL
6	TRAFFIC CONTROL
7	TRAFFIC CONTROL
8	TRAFFIC CONTROL
9	TRAFFIC CONTROL
10	TRAFFIC CONTROL
11	TRAFFIC CONTROL
12	TRAFFIC CONTROL
13	TRAFFIC CONTROL
14	TRAFFIC CONTROL
15	TRAFFIC CONTROL
16	TRAFFIC CONTROL
17	TRAFFIC CONTROL
18	TRAFFIC CONTROL
19	TRAFFIC CONTROL
20	TRAFFIC CONTROL
21	TRAFFIC CONTROL
22	TRAFFIC CONTROL
23	TRAFFIC CONTROL
24	TRAFFIC CONTROL
25	TRAFFIC CONTROL
26	TRAFFIC CONTROL
27	TRAFFIC CONTROL
28	TRAFFIC CONTROL
29	TRAFFIC CONTROL
30	TRAFFIC CONTROL
31	TRAFFIC CONTROL
32	TRAFFIC CONTROL
33	TRAFFIC CONTROL
34	TRAFFIC CONTROL
35	TRAFFIC CONTROL
36	TRAFFIC CONTROL
37	TRAFFIC CONTROL
38	TRAFFIC CONTROL
39	TRAFFIC CONTROL
40	TRAFFIC CONTROL
41	TRAFFIC CONTROL
42	TRAFFIC CONTROL
43	TRAFFIC CONTROL
44	TRAFFIC CONTROL
45	TRAFFIC CONTROL
46	TRAFFIC CONTROL
47	TRAFFIC CONTROL
48	TRAFFIC CONTROL
49	TRAFFIC CONTROL
50	TRAFFIC CONTROL
51	TRAFFIC CONTROL
52	TRAFFIC CONTROL
53	TRAFFIC CONTROL
54	TRAFFIC CONTROL
55	TRAFFIC CONTROL
56	TRAFFIC CONTROL
57	TRAFFIC CONTROL
58	TRAFFIC CONTROL
59	TRAFFIC CONTROL
60	TRAFFIC CONTROL
61	TRAFFIC CONTROL
62	TRAFFIC CONTROL
63	TRAFFIC CONTROL
64	TRAFFIC CONTROL
65	TRAFFIC CONTROL
66	TRAFFIC CONTROL
67	TRAFFIC CONTROL
68	TRAFFIC CONTROL
69	TRAFFIC CONTROL
70	TRAFFIC CONTROL
71	TRAFFIC CONTROL
72	TRAFFIC CONTROL
73	TRAFFIC CONTROL
74	TRAFFIC CONTROL
75	TRAFFIC CONTROL
76	TRAFFIC CONTROL
77	TRAFFIC CONTROL
78	TRAFFIC CONTROL
79	TRAFFIC CONTROL
80	TRAFFIC CONTROL
81	TRAFFIC CONTROL
82	TRAFFIC CONTROL
83	TRAFFIC CONTROL
84	TRAFFIC CONTROL
85	TRAFFIC CONTROL
86	TRAFFIC CONTROL
87	TRAFFIC CONTROL
88	TRAFFIC CONTROL
89	TRAFFIC CONTROL
90	TRAFFIC CONTROL
91	TRAFFIC CONTROL
92	TRAFFIC CONTROL
93	TRAFFIC CONTROL
94	TRAFFIC CONTROL
95	TRAFFIC CONTROL
96	TRAFFIC CONTROL
97	TRAFFIC CONTROL
98	TRAFFIC CONTROL
99	TRAFFIC CONTROL
100	TRAFFIC CONTROL

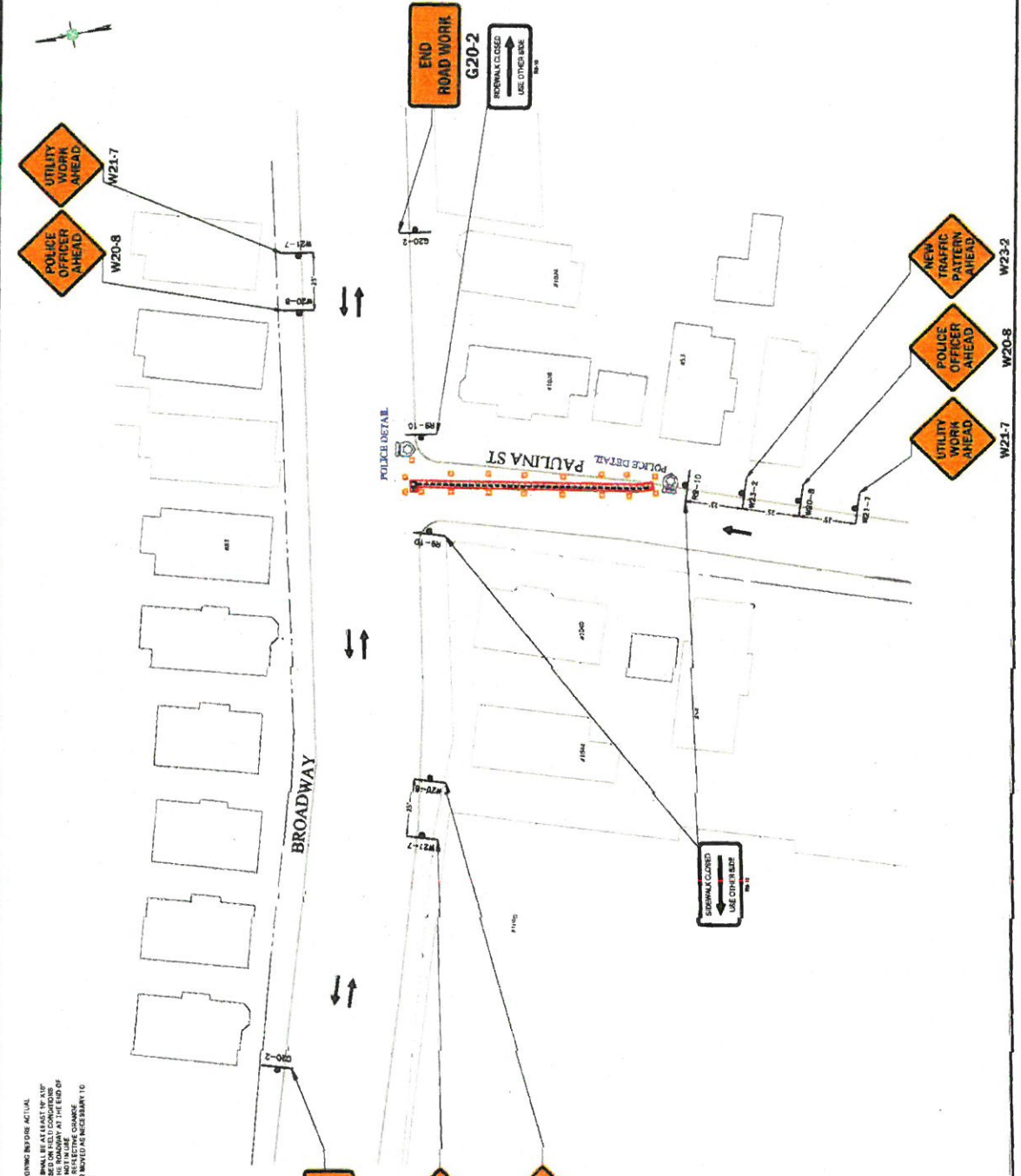
**NOTE:**  
 1. ALL TRAFFIC CONTROL DEVICES AND SIGNS SHALL BE PLACED AT LEAST 100 FEET UP-DRIVE FROM THE WORK ZONE.  
 2. ALL TRAFFIC CONTROL DEVICES AND SIGNS SHALL BE PLACED AT LEAST 100 FEET UP-DRIVE FROM THE WORK ZONE.  
 3. ALL TRAFFIC CONTROL DEVICES AND SIGNS SHALL BE PLACED AT LEAST 100 FEET UP-DRIVE FROM THE WORK ZONE.  
 4. ALL TRAFFIC CONTROL DEVICES AND SIGNS SHALL BE PLACED AT LEAST 100 FEET UP-DRIVE FROM THE WORK ZONE.  
 5. ALL TRAFFIC CONTROL DEVICES AND SIGNS SHALL BE PLACED AT LEAST 100 FEET UP-DRIVE FROM THE WORK ZONE.  
 6. ALL TRAFFIC CONTROL DEVICES AND SIGNS SHALL BE PLACED AT LEAST 100 FEET UP-DRIVE FROM THE WORK ZONE.  
 7. ALL TRAFFIC CONTROL DEVICES AND SIGNS SHALL BE PLACED AT LEAST 100 FEET UP-DRIVE FROM THE WORK ZONE.  
 8. ALL TRAFFIC CONTROL DEVICES AND SIGNS SHALL BE PLACED AT LEAST 100 FEET UP-DRIVE FROM THE WORK ZONE.  
 9. ALL TRAFFIC CONTROL DEVICES AND SIGNS SHALL BE PLACED AT LEAST 100 FEET UP-DRIVE FROM THE WORK ZONE.  
 10. ALL TRAFFIC CONTROL DEVICES AND SIGNS SHALL BE PLACED AT LEAST 100 FEET UP-DRIVE FROM THE WORK ZONE.

**SCALE:** 1" = 40 FEET (MAXIMUM 150')

**AXIS ENGINEERING GROUP**  
**Comcast**

**TRAFFIC CONTROL: 02**  
**PAULINA ST**  
**OVERHILL, IL**

DATE: 10/15/2013  
 DRAWN BY: [Name]  
 CHECKED BY: [Name]  
 SCALE: 1" = 40 FEET



**TRAFFIC MANAGEMENT NOTES**

1. PLACE ALL SIGNETS DEVICES AND CONSTRUCTION SIGNS BEFORE ACTUAL CONSTRUCTION WORK BEGINS.
2. ALL TRAFFIC CONTROL DEVICES AND SIGNS SHALL BE PLACED AT LEAST 100 FEET UP-DRIVE FROM THE WORK ZONE.
3. ALL TRAFFIC CONTROL DEVICES AND SIGNS SHALL BE PLACED AT LEAST 100 FEET UP-DRIVE FROM THE WORK ZONE.
4. ALL TRAFFIC CONTROL DEVICES AND SIGNS SHALL BE PLACED AT LEAST 100 FEET UP-DRIVE FROM THE WORK ZONE.
5. ALL TRAFFIC CONTROL DEVICES AND SIGNS SHALL BE PLACED AT LEAST 100 FEET UP-DRIVE FROM THE WORK ZONE.
6. ALL TRAFFIC CONTROL DEVICES AND SIGNS SHALL BE PLACED AT LEAST 100 FEET UP-DRIVE FROM THE WORK ZONE.
7. ALL TRAFFIC CONTROL DEVICES AND SIGNS SHALL BE PLACED AT LEAST 100 FEET UP-DRIVE FROM THE WORK ZONE.
8. ALL TRAFFIC CONTROL DEVICES AND SIGNS SHALL BE PLACED AT LEAST 100 FEET UP-DRIVE FROM THE WORK ZONE.
9. ALL TRAFFIC CONTROL DEVICES AND SIGNS SHALL BE PLACED AT LEAST 100 FEET UP-DRIVE FROM THE WORK ZONE.
10. ALL TRAFFIC CONTROL DEVICES AND SIGNS SHALL BE PLACED AT LEAST 100 FEET UP-DRIVE FROM THE WORK ZONE.

SOMERVILLE, MA

Map	Cut	Bloc	Cut	Lot	Lot	Stree	Numbe	Location	Grantee	Co grantee-s Name	Mailing Address	City	St Zip	Use
12	A			10		BROADWAY	1088		FINN KATHLEEN M	PANIS MICHAEL C	1088 BROADWAY	SOMERVILLE	MA 02144	1010 SING
12	A			11		BROADWAY	1060		CITY OF SOMERVILLE		93 HIGHLAND AVE	SOMERVILLE	MA 02143	9300 CITY
12	A			11	A	HOLLAND ST	169		TUFTS UNIVERSITY	ADMIN BUILDING	169 HOLLAND ST	SOMERVILLE	MA 02144	9420 COLL
12	A			12		BROADWAY	1044		MACK DENNIS J TRSTEE	DENNIS J MACK REVOCABLE L	1044 BROADWAY	SOMERVILLE	MA 02144	1050 THRE
12	A			14		PAULINA ST	54		FEDERICO GILDO & ANNA J FOR LJ	COLLINS C A & KELLEY M J	4 GIGANTE DR	STONEHAM	MA 02180	1040 TWO
12	A			15		PAULINA ST	48		NEUMANN CYNTHIA ELLIS TRUSTEE	CYNTHIA ELLIS NEUMANN TRU	35 MORNING SUN AVE	MILL VALLEY	CA 94941	1040 TWO
12	A			16		PAULINA ST	46		JURKIEWICZ CHARLES J SR & MARY	JURKIEWICZ CHARLES J JR	40 PICKEREL WAY	FORESTDALE	MA 02644	1050 THRE
12	A			17	1	PAULINA ST	44	20078820	DONOHUE TRUSTEES	44 PAULINA STREET UNIT 1	64 TANGLEWOOD WAY	CARLISLE	MA 01741	1020 COND
12	A			17	2	PAULINA ST	44	20078830	GALE ANDREW		44 PAULINA ST 2	SOMERVILLE	MA 02144	1020 COND
12	A			18		PAULINA ST	38		DIAS EDUARDO JR		40 PAULINA ST	SOMERVILLE	MA 02144	1040 TWO
12	A			19		PAULINA ST	34		NORRU CHOE DOLMA	NORBU NYINA	90 BONNER AVE	MEDFORD	MA 02155	1040 TWO

