



CITY OF SOMERVILLE
Commonwealth of Massachusetts
93 Highland Avenue
Somerville, MA 02143
(617) 625-6600

BUSINESS LICENSE APPLICATION - Small Wireless Facility

File #: 19-014854

License #: BL19-000099

Address: 12 DARTMOUTH ST

Licensee: Matthew Pricco Network Building + Consulting

DBA Name: ExteNet Systems, Inc.

Business Ownership Type: Corporation

Legal Name of Entity: ExteNet Systems, Inc.

Owners/Officers: James A. Hyde, H. Anthony Lehv, Daniel L. Timm,

License Information:

Do you believe this to be a 6409(a) application?:

Describe the reason for the work, and the intended beneficiaries:

Provide the detailed description of the work that should appear on the License: Extenet proposes to install a small cell wireless facility on an existing wood utility pole. The principal elements of the proposed facility are an antenna housed in a 24" long shroud side-mounted on the pole, including an additional 6" of base mounting equipment and three radios in a shroud also mounted on the pole. See the plans accompanying this application for details. This proposal improves wireless capacity for residents, businesses and visitors.

of installations on existing poles: 1

of installations on new poles:

Provide the legal name of the entity that will own the License: ExteNet Systems, Inc.

Approval Conditions:

Approved By:

Hans Jensen, Approved

Karla Cuarezma, Approved

Malik Drayton, Approved with Conditions

APPROVAL CONDITION: MD20200325: Contractor shall take all necessary precautions to avoid damaging any tree or tree part with equipment.

APPROVAL CONDITION: MD20200325: All nearby street tree(s) shall be protected prior to and during all construction activities using TREE BOX or TREE WRAPS. . TREE BOX shall be constructed from 2 in. x 4 in. lumber creating a box around the border of the tree pit with 2 in. x 4 in. lumber standing

straight up at the corners and wrapped with orange snow fence. Detail attached. . TREE WRAPS (TREE TRUNK WRAPPING PROTECTION LUMBER) shall consist of 2 in. x 4 in. and 8 ft. height lumber wired together in close spacing with zip ties or 16 gauge galvanized steel wire to form a protective enclosure around tree trunks. Use burlap to separate the wood from the bark if necessary to prevent wood from scraping or bruising bark. Do not use staples or puncture the trunk in any way.

APPROVAL CONDITION: MD20200325: Any tree roots less than two (2) inches in diameter that cannot be avoided during construction shall be carefully and cleanly cut with a clean pair of pruning shears or loppers. Roots are to be cut back flush with the edge of the trench. If any tree roots greater than two (2) inches in diameter are encountered, stop work immediately and contact the City Urban Forester. Any and all pruning of roots greater than 2 inches in diameter must be completed under the supervision of the City Urban Forester.

John Power, Approved

Mark Lawhorne, Approved

John J. Long, Approved

LATITUDE: 42.390620°
LONGITUDE: -71.097385°

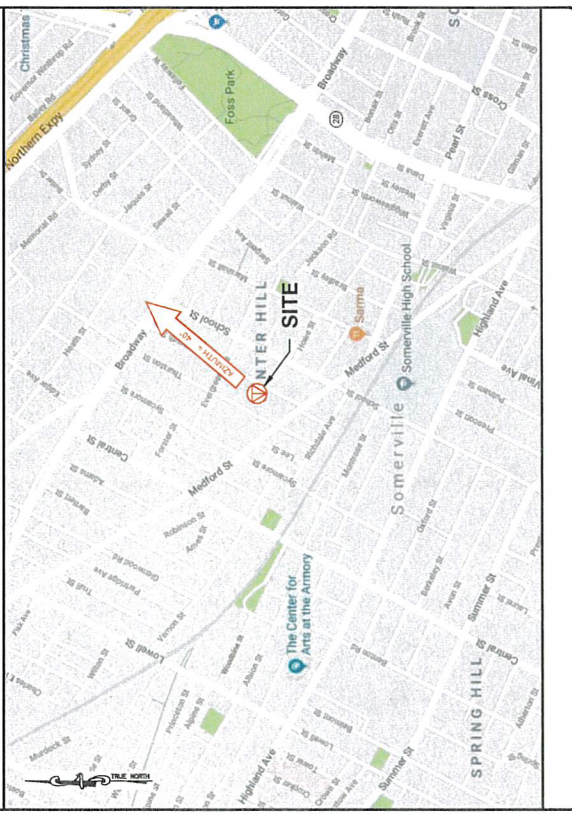


NE-MA-BSTN3N01-TMO
NE-MA-BSTN3N01-03309 / NE3206BA_11LAB

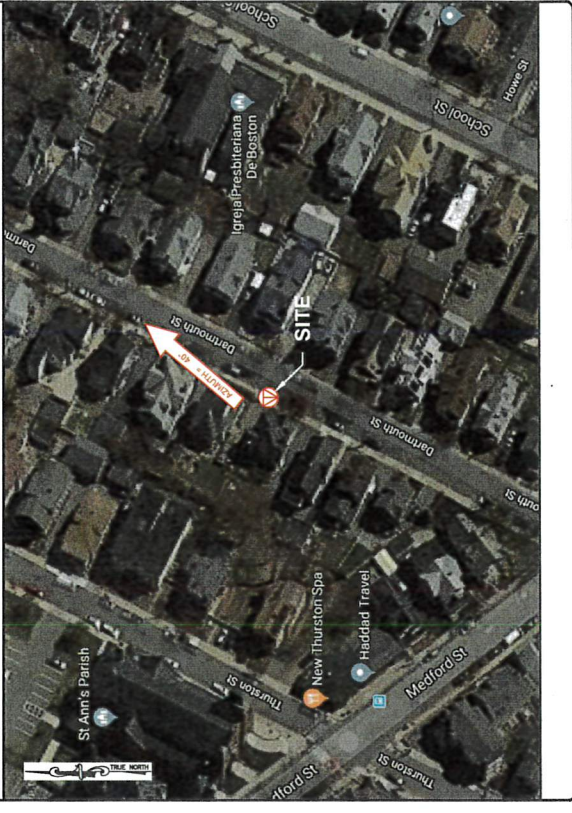
PROPOSED SMALL CELL NODE
12 DARTMOUTH STREET, SOMERVILLE, MA 02145
CITY OF SOMERVILLE, MIDDLESEX COUNTY



VICINITY MAP



AERIAL MAP



NB+C
TOTALLY COMMITTED
NB+C ENGINEERING SERVICES, LLC.
100 WASHINGTON AVENUE, SUITE 200
SOMERVILLE, MA 02145
(617) 865-5327

extenet
YOUR NETWORK. EVERYWHERE.
3000 WAREHOUSING ROAD, SUITE 340
LISLE, IL 60532
(815) 595-1600

NE-MA-BSTN3N01-03309
TMO ID: NE3206BA_11LAB
12 DARTMOUTH STREET
SOMERVILLE, MA 02145
MIDDLESEX COUNTY

REVISIONS

NO.	REVISED	DATE	BY
1	ISSUED FOR PERMIT	08/15/19	ALM
2	ISSUED FOR PERMIT	08/15/19	ALM
3	ISSUED FOR PERMIT	08/15/19	ALM
4	ISSUED FOR PERMIT	08/15/19	ALM
5	ISSUED FOR PERMIT	08/15/19	ALM



KRUPAARAN KOLLANDAIVELU, P.E.
MA PROFESSIONAL ENGINEER LIC. #54019

TITLE SHEET

SHEET NUMBER
01 OF 05

DRAWING INDEX

NO.	DESCRIPTION
01	TITLE SHEET
02	NOTES
03	ELEVATION
04	ANTENNA & EQUIPMENT DETAILS
05	ELECTRICAL & GROUNDING DETAILS

- CODE COMPLIANCE
- ALL WORK AND MATERIALS SHALL BE PERFORMED AND INSTALLED IN ACCORDANCE WITH THE CURRENT EDITIONS OF THE FOLLOWING CODES AS ADOPTED BY THE LOCAL GOVERNING AUTHORITIES. NOTHING IN THESE PLANS IS TO BE CONSTRUED TO PERMIT WORK NOT CONFORMING TO THE LATEST EDITIONS OF THE FOLLOWING CODES.
 - ANSI/TIA-222-G
 - TIA 807
 - INSTITUTE FOR ELECTRICAL & ELECTRONICS ENGINEER 81
 - IEEE C2 NATIONAL ELECTRIC SAFETY CODE LATEST EDITION
 - TELECORDIA GR-1275
 - ANSI/M7 311
 - 2015 INTERNATIONAL BUILDING CODE (MASSACHUSETTS AMENDED 9TH EDITION)
 - 2017 NATIONAL ELECTRICAL CODE
 - NFPA 1-2015 EDITION
 - 2015 IFC - REFERENCE 527 CHAIR
 - AMERICAN INSTITUTE OF STEEL CONSTRUCTION 13TH EDITION
 - MANUAL OF STEEL CONSTRUCTION 13TH EDITION

PROJECT INFORMATION

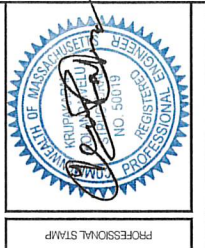
PROJECT NAME: NE-MA-BSTN3N01-TMO
POLE TAG: 95/3
LONGITUDE: 42.390620°
LATITUDE: -71.097385°
CITY OF SOMERVILLE
MIDDLESEX COUNTY
RICK ANGELO
12 DARTMOUTH STREET
LISLE, IL 60532
NOC: (865) 892-5327
HUB LOCATION: 3000 WAREHOUSING ROAD, SUITE 340
SOMERVILLE, MA 02145
ELECTRIC COMPANY: EVERSOURCE

NBT-C
TOTALLY COMMITTED.
NBT-C ENGINEERING SERVICES, LLC.
100 WASHINGTON STREET
SOMERVILLE, MA 02145
(617) 252-3800

exinet
YOUR NETWORK. YOUR SYSTEMS. EVERYWHERE.
3030 WARRENVILLE ROAD, SUITE 340
LITTLE ROCK, AR 72626
(501) 855-3800

NE-MA-BSTN01-03309
TMO ID: NE3206BA_11LAB
12 DARTMOUTH STREET
SOMERVILLE, MA 02145
MIDDLESEX COUNTY

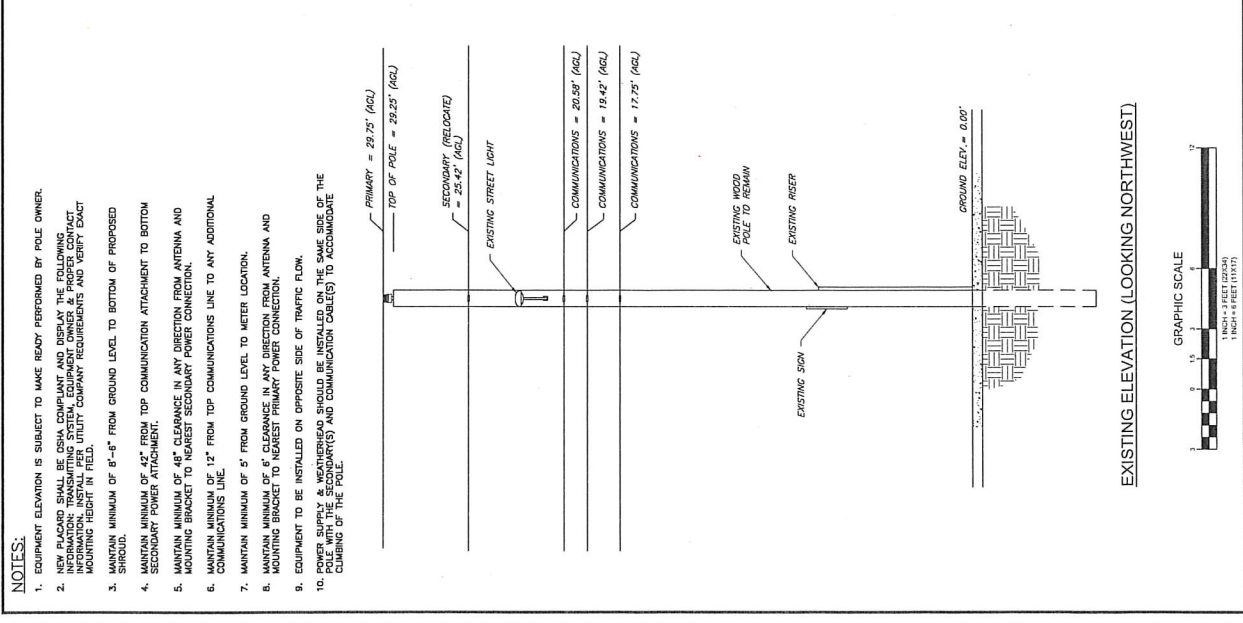
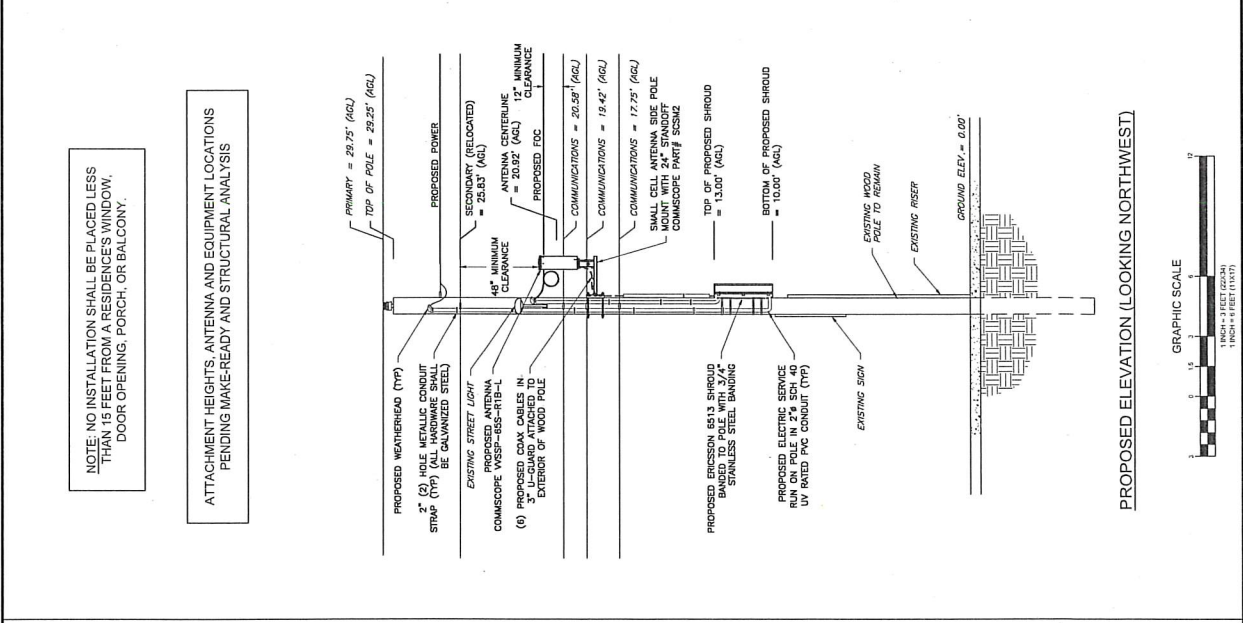
REV	DATE	DESCRIPTION	BY
5	01/16/20	10 COMPLIANCE ADOPTED	DRG
4	01/02/20	MODIFY REVISED	DRG
3	09/23/19	REVISED	NBR
2	09/06/19	STAMP ADDED	CVE
1	09/19/19	POC REVISED	CUJ
0	06/07/19	PRELIMINARY	ALM



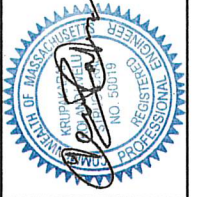
KRUPAKARAN KOLLANDAVELU, P.E.
MA PROFESSIONAL ENGINEER LIC. #50019

ELEVATION

SHEET NUMBER
03 OF 05



REV	DATE	DESCRIPTION	BY
1	05/15/19	FOR REVIEW	CJL
2	05/20/19	STAMP ADDED	CJL
3	06/03/19	REMOVED	NBS
4	07/02/20	MOUNT REVISED	DRG
5	07/16/20	15' COMPLIANCE ADDED	DRG



ENGINEERING FIRM

APPLICANT

SITE INFORMATION

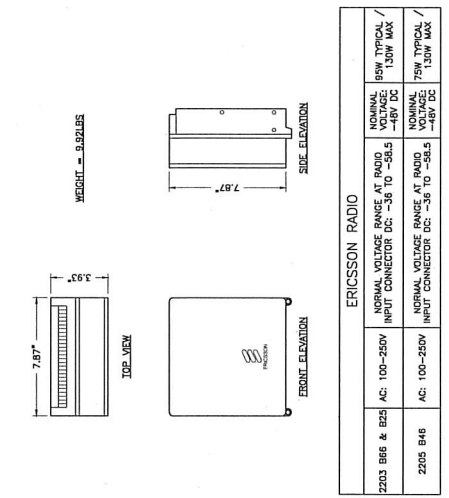
DESIGN RECORD

PROFESSIONAL STAMP

ENGINEER

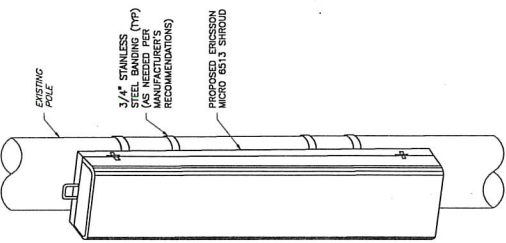
SHEET TITLE

SHEET NUMBER

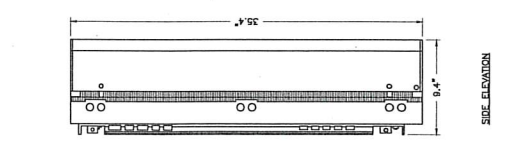
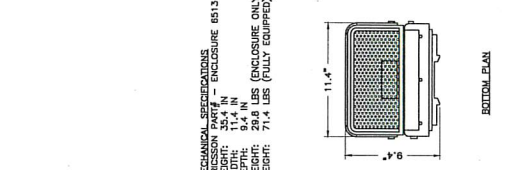
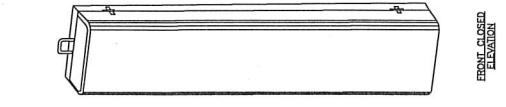
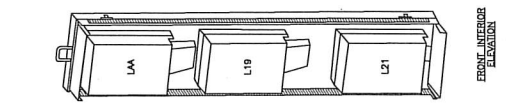
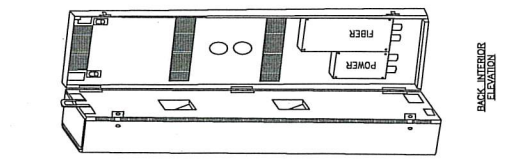


ERICSSON RADIO		NORMAL VOLTAGE RANGE AT RADIO INPUT CONNECTOR DC: -36 TO -58.5	NORMAL VOLTAGE RANGE AT RADIO INPUT CONNECTOR DC: -36 TO -58.5
2203 B66 & B25	AC: 100-250V	2203 L2E (AWS)	AC: 100-250V
2205 B46	AC: 100-250V	2203 L2E (PCS)	AC: 100-250V
		2205 L2A (5GHz)	AC: 100-250V

3 ERICSSON REMOTE RADIO UNIT (RRU)
04 NTS

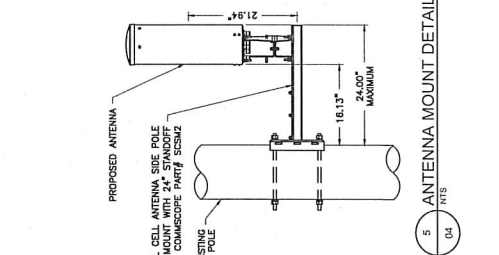
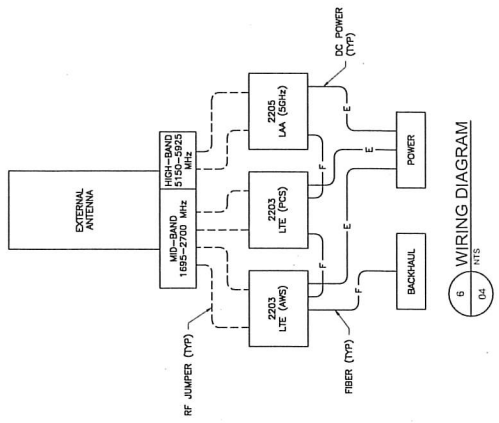


2 EQUIPMENT MOUNTING DETAIL
04 NTS

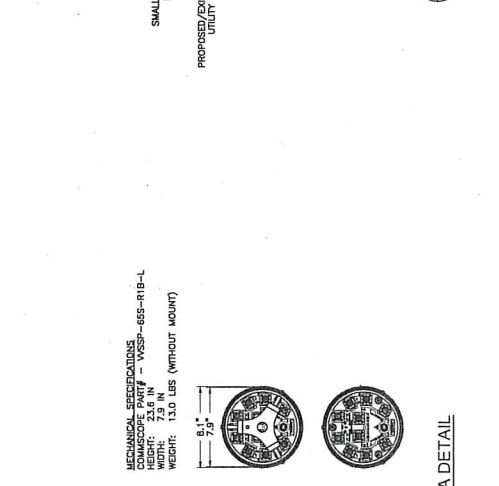


MECHANICAL SPECIFICATIONS
ENCLOSURE 6513
HEIGHT: 25.4 IN
WIDTH: 11.4 IN
DEPTH: 9.4 IN
WEIGHT: 29.8 LBS (ENCLOSURE ONLY)
WEIGHT: 71.4 LBS (FULLY EQUIPPED)

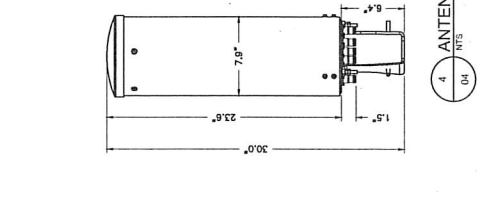
1 ERICSSON MICRO 6513 SHROUD DETAIL
04 NTS



5 ANTENNA MOUNT DETAIL
04 NTS



4 ANTENNA DETAIL
04 NTS



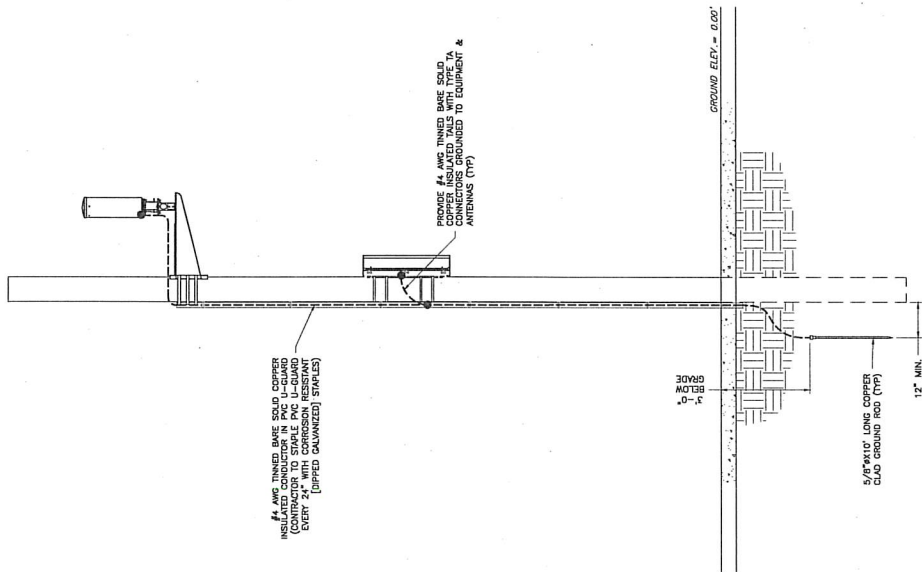
REV	DATE	DESCRIPTION	BY
5	03/18/09	15' COMPLIANCE ADDED	DRG
4	03/23/09	ADJUST REVISION	DRG
3	08/21/08	REVISION	NBR
2	08/26/08	STAMP ADDED	DRG
1	05/15/08	FOG REVISION	CAJ
0	04/29/08	PRELIMINARY	ALM



KRUPAKARAN KOLLANDAVELU, P.E.
MA PROFESSIONAL ENGINEER, #50019

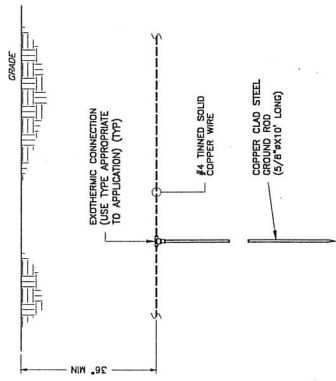
ELECTRICAL & GROUNDING DETAILS

ENGINEERING FIRM A/P/COUNT SITE INFORMATION DESIGN RECORD PROFESSIONAL STAMP ENGINEER SHEET TITLE SHEET NUMBER

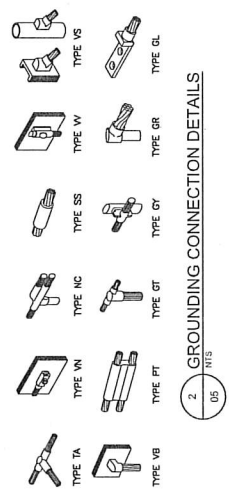


NOTE:
EXISTING/PROPOSED UTILITY WIRES, SERVICES, AND EQUIPMENT NOT SHOWN FOR CLARITY.

3 ELECTRICAL & GROUNDING RISER DIAGRAM
05 NTS



1 TYPICAL GROUND ROD DETAIL
05 NTS



2 GROUNDING CONNECTION DETAILS
05 NTS