



## CITY OF SOMERVILLE

Commonwealth of Massachusetts

93 Highland Avenue

Somerville, MA 02143

(617) 625-6600

### BUSINESS LICENSE APPLICATION - Small Wireless Facility

File #: 19-014833

License #: BL19-000086

Address: 8 HOWE ST

Licensee: Matthew Pricco Network Building + Consulting

DBA Name: ExteNet Systems, Inc.

Business Ownership Type: Corporation

Legal Name of Entity: ExteNet Systems, Inc.

Owners/Officers: James A. Hyde, H. Anthony Lehv, Daniel L. Timm,

#### License Information:

**Do you believe this to be a 6409(a) application?:** No

**Describe the reason for the work, and the intended beneficiaries:** Installation of a small cell wireless facility in the public right-of-way. The facility will improve wireless communications services for residents, businesses, and visitors in the vicinity.

**Provide the detailed description of the work that should appear on the License:** Installation of a small cell wireless facility on a wood utility pole in the public right-of-way at 8 Howe St as depicted on the drawings accompanying this application. The facility will improve wireless communications services for residents, businesses, and visitors in the vicinity.

**# of installations on existing poles:** 1

**# of installations on new poles:** 0

**Provide the legal name of the entity that will own the License:** ExteNet Systems, Inc.

Approval Conditions: **Contractor shall take all necessary precautions to avoid damaging any tree or tree part with equipment.**

**Approved By:**

**John Power, Approved**

**Karla Cuarezma, Approved**

**Malik Drayton, Approved**

**Peter Lew, Approved**

**Mark Lawhorne, Approved**

**John J. Long, Approved**



**NE-MA-BSTN3N01-TMO**

**NE-MA-BSTN3N01-03310 / NE3206BA\_21LAB**

**PROPOSED SMALL CELL NODE**

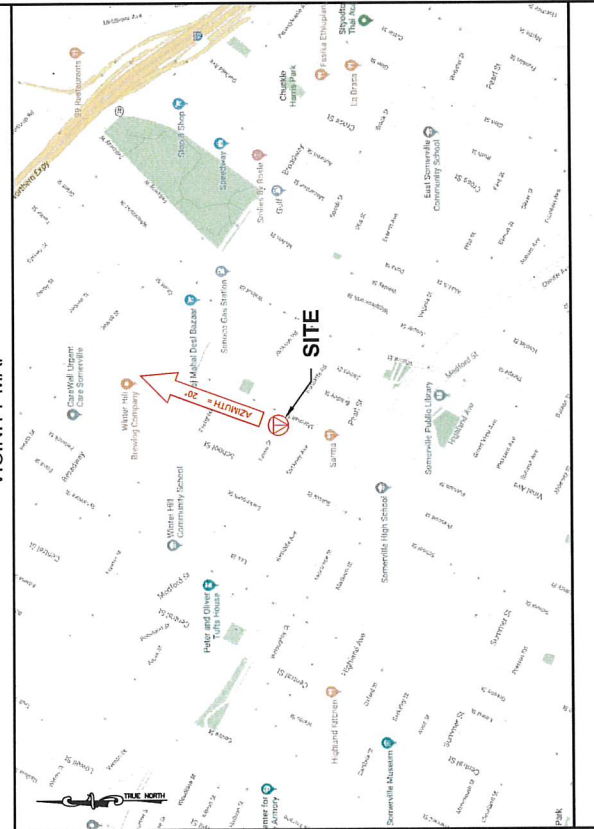
8 HOWE STREET, SOMERVILLE, MA 02145  
CITY OF SOMERVILLE, MIDDLESEX COUNTY

LATITUDE: 42.389600°  
LONGITUDE: -71.095279°

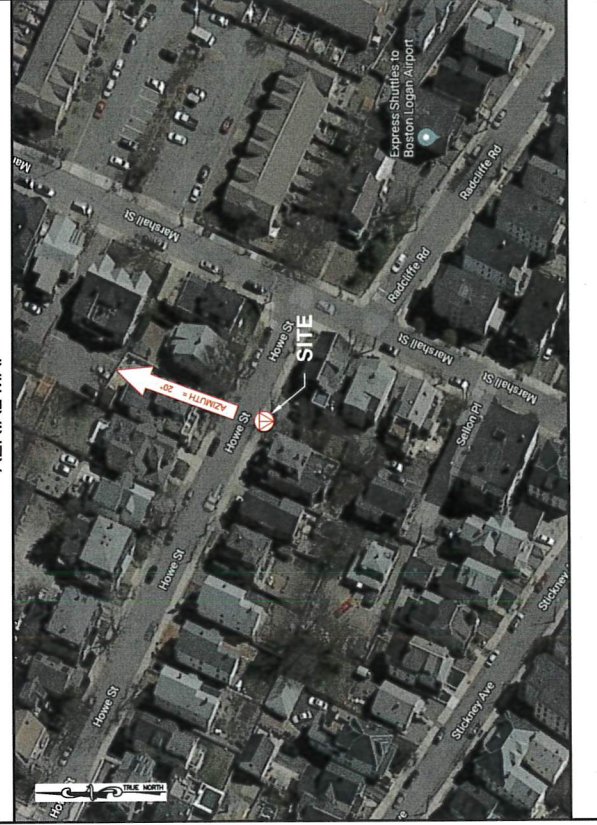


Know what's below.  
Call before you dig.

VICINITY MAP



AERIAL MAP



**PROJECT INFORMATION**

PROJECT NAME: NE-MA-BSTN3N01-TMO  
POLE TAG: 1711  
LATITUDE: 42.389600°  
LONGITUDE: -71.095279°  
JURISDICTION: CITY OF SOMERVILLE, MIDDLESEX COUNTY  
EXTENET PROJECT MANAGER: RICK ANGELINI  
3050 WARRENVILLE RD, SUITE 340  
HUB LOCATION: HUB-4850568, SUITE 340, WARRENVILLE, MA 02145  
ELECTRIC COMPANY: EVERSOURCE

**CODE COMPLIANCE**

ALL WORK AND MATERIALS SHALL BE PERFORMED AND INSTALLED IN ACCORDANCE WITH THE CURRENT EDITIONS OF ALL LOCAL AND STATE BUILDING CODES AS ADOPTED BY THE LOCAL GOVERNING AUTHORITIES. NOTHING IN THESE PLANS IS TO BE CONSTRUED TO PERMIT WORK NOT CONFORMING TO THE LATEST EDITIONS OF THE FOLLOWING CODES.

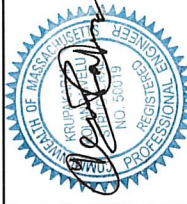
- 2015 INTERNATIONAL BUILDING CODE
- 2017 NATIONAL ELECTRICAL CODE (LATEST EDITION)
- 2015 NATIONAL ELECTRICAL CODE
- NFPA 7-2015 EDITION
- 2015 IFC - REFERENCE 527 CHR
- AMERICAN CONCRETE INSTITUTE
- AMERICAN INSTITUTE OF STEEL CONSTRUCTION
- MANUAL OF STEEL CONSTRUCTION 13TH EDITION
- ANSI/TIA-222-G
- TIA 807
- INSTITUTE FOR ELECTRICAL & ELECTRONICS ENGINEER 81
- IEEE C2 NATIONAL ELECTRIC SAFETY CODE LATEST EDITION
- TELECORDIA GR-1275
- ANSIT 311

**DRAWING INDEX**

TITLE SHEET
01
02
03
04
05

**ENGINEER**

KRUPAKARAN KOLJANDRIYELU, P.E.  
MA PROFESSIONAL ENGINEER LIC. #28019



**PROFESSIONAL STAMP**

**DESIGN RECORD**

REV	DATE	DESCRIPTION	BY
4	01/20/20	MOUNT REVISED	DRG
3	09/12/19	REVISED	NEB
2	08/09/19	FINAL	CVE
1	10/16/19	POC REVISED	CAI
0	04/09/19	PRELIMINARY	DPR

**REVISIONS**

**SITE INFORMATION**

NE-MA-BSTN3N01-03310  
TMO ID: NE3206BA\_21LAB  
8 HOWE STREET  
SOMERVILLE, MA 02145  
MIDDLESEX COUNTY

**APPLICANT**

**extenet**  
YOUR NETWORK EVERYWHERE  
3050 WARRENVILLE ROAD, SUITE 340  
LESLIE, MA 02148  
(617) 545-3890

**ENGINEERING FIRM**

**NB+C**  
TOTALLY COMMITTED.  
NB+C ENGINEERING SERVICES, LLC.  
1000 WASHINGTON STREET  
SOMERVILLE, MA 02148

**SHEET NUMBER**

SHEET  
**01 OF 05**

**SHEET TITLE**

**TITLE SHEET**



NE-MA-BSTM301-03310  
TMO ID: NE32086A\_21LAB  
8 HOWE STREET  
SOMERVILLE, MA 02145  
MIDDLESEX COUNTY

**REVISIONS**

REV	DATE	DESCRIPTION	BY
1	04/01/19	PRELIMINARY	DR
2	06/05/19	FINAL	DVE
3	06/05/19	FOR REVIEW	CLE
4	01/26/20	MCINT REVISION	DRG
5	05/12/19	REVISION	NSB



**NOTES**

**WEATHER SEAL GUIDELINES:**

- WRAP ALL CONNECTORS WITH BLACK ELECTRICAL TAPE TO COVER ALL VENTILATIONS TO PREVENT AIR FROM ENTERING THE BUILDING. WEATHER SEAL IS TO BE REMOVED 3/4" FROM ON 2" HIGH TAPE CAN BE USED FOR THIS PURPOSE.
- WRAP THE LAST LAYER OF TAPE WITH A SECOND LAYER OF TAPE TO ENSURE THE SEAL IS COMPLETE. THE SECOND LAYER OF TAPE SHOULD BE PULLED TIGHT AND OVERLAP THE FIRST LAYER BY AT LEAST ONE (1) INCH. THE SECOND LAYER OF TAPE SHOULD BE PULLED TIGHT AND OVERLAP THE FIRST LAYER BY AT LEAST ONE (1) INCH.
- WRAP ALL CONNECTORS WITH BLACK ELECTRICAL TAPE TO COVER ALL VENTILATIONS TO PREVENT AIR FROM ENTERING THE BUILDING. WEATHER SEAL IS TO BE REMOVED 3/4" FROM ON 2" HIGH TAPE CAN BE USED FOR THIS PURPOSE.
- WRAP THE LAST LAYER OF TAPE WITH A SECOND LAYER OF TAPE TO ENSURE THE SEAL IS COMPLETE. THE SECOND LAYER OF TAPE SHOULD BE PULLED TIGHT AND OVERLAP THE FIRST LAYER BY AT LEAST ONE (1) INCH. THE SECOND LAYER OF TAPE SHOULD BE PULLED TIGHT AND OVERLAP THE FIRST LAYER BY AT LEAST ONE (1) INCH.
- OVERLAP THE TAPE SIZE OF THE PREVIOUS LAYER.
- ALWAYS FINISH THE LAST WRAP OF TAPE WITH A SHIMMING OF TAPE TO GO IN THE WEATHER SEAL TO ENSURE THE SEAL IS COMPLETE. THE SEAL SHOULD BE PULLED TIGHT AND OVERLAP THE PREVIOUS LAYER BY AT LEAST ONE (1) INCH.
- WRAP THE LAST LAYER OF TAPE WITH A SECOND LAYER OF TAPE TO ENSURE THE SEAL IS COMPLETE. THE SECOND LAYER OF TAPE SHOULD BE PULLED TIGHT AND OVERLAP THE FIRST LAYER BY AT LEAST ONE (1) INCH. THE SECOND LAYER OF TAPE SHOULD BE PULLED TIGHT AND OVERLAP THE FIRST LAYER BY AT LEAST ONE (1) INCH.

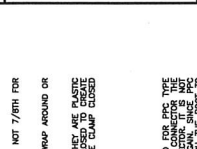
**SITE INFORMATION**

NE-MA-BSTM301-03310  
TMO ID: NE32086A\_21LAB  
8 HOWE STREET  
SOMERVILLE, MA 02145  
MIDDLESEX COUNTY

**DESIGN RECORD**

REV	DATE	DESCRIPTION	BY
1	04/01/19	PRELIMINARY	DR
2	06/05/19	FINAL	DVE
3	06/05/19	FOR REVIEW	CLE
4	01/26/20	MCINT REVISION	DRG
5	05/12/19	REVISION	NSB

**PROFESSIONAL STAMP**



**ENGINEER**

KRUPAKARAN KOLANDAVELU, P.E.  
MA PROFESSIONAL ENGINEER LIC. #50019

**SHEET TITLE**

WEATHER SEALING

**SHEET NUMBER**

02 OF 05



Know what's below.  
Call before you dig.

**GENERAL NOTES:**

- UNLESS OTHERWISE SPECIFIED, ALL WORK SHALL BE PERFORMED IN ACCORDANCE WITH THE NATIONAL ELECTRICAL CODE (NEC) AND ALL APPLICABLE LOCAL, STATE, AND FEDERAL REGULATIONS, ORDINANCES, RULES, REGULATIONS, AND CODES.
- THE CONTRACTOR SHALL BE RESPONSIBLE FOR OBTAINING ALL NECESSARY PERMITS FROM THE LOCAL, STATE, AND FEDERAL AUTHORITIES.
- THE CONTRACTOR SHALL MAINTAIN ACCESS TO ALL EXISTING UTILITIES AND SERVICES AT ALL TIMES.
- ALL WORK SHALL BE COMPLETED WITHIN THE SPECIFIED TIME FRAME.
- THE CONTRACTOR SHALL MAINTAIN A SAFE WORKING ENVIRONMENT AT ALL TIMES.
- ALL MATERIALS AND EQUIPMENT SHALL BE STORED IN AN ORGANIZED MANNER.
- ALL WORK SHALL BE COMPLETED IN ACCORDANCE WITH THE NATIONAL ELECTRICAL CODE (NEC).
- THE CONTRACTOR SHALL BE RESPONSIBLE FOR THE PROTECTION OF ALL EXISTING UTILITIES AND SERVICES.
- ALL WORK SHALL BE COMPLETED IN ACCORDANCE WITH THE NATIONAL ELECTRICAL CODE (NEC).
- THE CONTRACTOR SHALL BE RESPONSIBLE FOR THE PROTECTION OF ALL EXISTING UTILITIES AND SERVICES.

**GROUNDING NOTES:**

- GROUNDING SHALL COMPLY WITH ARTICLE 250 OF THE NATIONAL ELECTRICAL CODE.
- ALL WORK SHALL BE PERFORMED IN ACCORDANCE WITH THE NATIONAL ELECTRICAL CODE (NEC).
- THE CONTRACTOR SHALL BE RESPONSIBLE FOR THE PROTECTION OF ALL EXISTING UTILITIES AND SERVICES.
- ALL WORK SHALL BE COMPLETED IN ACCORDANCE WITH THE NATIONAL ELECTRICAL CODE (NEC).
- THE CONTRACTOR SHALL BE RESPONSIBLE FOR THE PROTECTION OF ALL EXISTING UTILITIES AND SERVICES.
- ALL WORK SHALL BE COMPLETED IN ACCORDANCE WITH THE NATIONAL ELECTRICAL CODE (NEC).
- THE CONTRACTOR SHALL BE RESPONSIBLE FOR THE PROTECTION OF ALL EXISTING UTILITIES AND SERVICES.
- ALL WORK SHALL BE COMPLETED IN ACCORDANCE WITH THE NATIONAL ELECTRICAL CODE (NEC).
- THE CONTRACTOR SHALL BE RESPONSIBLE FOR THE PROTECTION OF ALL EXISTING UTILITIES AND SERVICES.
- ALL WORK SHALL BE COMPLETED IN ACCORDANCE WITH THE NATIONAL ELECTRICAL CODE (NEC).

**GROUNDING GUIDELINES:**

- ALL EQUIPMENT THAT IS INSTALLED OR MAY CAUSE ANY KIND OF ELECTRICAL CHARGE OR BUILD UP MUST HAVE PROPER AND ACCURATE GROUNDING IN PLACE TO PREVENT FROM EQUIPMENT DAMAGE AND SHOCK INJURIES.
- GROUNDING SHALL BE PERFORMED IN ACCORDANCE WITH THE NATIONAL ELECTRICAL CODE (NEC).
- THE CONTRACTOR SHALL BE RESPONSIBLE FOR THE PROTECTION OF ALL EXISTING UTILITIES AND SERVICES.
- ALL WORK SHALL BE COMPLETED IN ACCORDANCE WITH THE NATIONAL ELECTRICAL CODE (NEC).
- THE CONTRACTOR SHALL BE RESPONSIBLE FOR THE PROTECTION OF ALL EXISTING UTILITIES AND SERVICES.
- ALL WORK SHALL BE COMPLETED IN ACCORDANCE WITH THE NATIONAL ELECTRICAL CODE (NEC).
- THE CONTRACTOR SHALL BE RESPONSIBLE FOR THE PROTECTION OF ALL EXISTING UTILITIES AND SERVICES.
- ALL WORK SHALL BE COMPLETED IN ACCORDANCE WITH THE NATIONAL ELECTRICAL CODE (NEC).
- THE CONTRACTOR SHALL BE RESPONSIBLE FOR THE PROTECTION OF ALL EXISTING UTILITIES AND SERVICES.
- ALL WORK SHALL BE COMPLETED IN ACCORDANCE WITH THE NATIONAL ELECTRICAL CODE (NEC).

**ELECTRICAL NOTES:**

- CONTRACTOR SHALL PERFORM ALL VENTILATIONS, OBSERVATIONS, TESTS, AND EXAMINATIONS WORKING FROM THE DATE OF THE PROJECT MANAGER LISTING ALL UTILITIES, EQUIPMENT AND DISPARITIES.
- VERIFY HEIGHTS WITH PROJECT MANAGER PRIOR TO INSTALLATION.
- THE CONTRACTOR SHALL BE RESPONSIBLE FOR THE PROTECTION OF ALL EXISTING UTILITIES AND SERVICES.
- ALL WORK SHALL BE COMPLETED IN ACCORDANCE WITH THE NATIONAL ELECTRICAL CODE (NEC).
- THE CONTRACTOR SHALL BE RESPONSIBLE FOR THE PROTECTION OF ALL EXISTING UTILITIES AND SERVICES.
- ALL WORK SHALL BE COMPLETED IN ACCORDANCE WITH THE NATIONAL ELECTRICAL CODE (NEC).
- THE CONTRACTOR SHALL BE RESPONSIBLE FOR THE PROTECTION OF ALL EXISTING UTILITIES AND SERVICES.
- ALL WORK SHALL BE COMPLETED IN ACCORDANCE WITH THE NATIONAL ELECTRICAL CODE (NEC).
- THE CONTRACTOR SHALL BE RESPONSIBLE FOR THE PROTECTION OF ALL EXISTING UTILITIES AND SERVICES.
- ALL WORK SHALL BE COMPLETED IN ACCORDANCE WITH THE NATIONAL ELECTRICAL CODE (NEC).

**WEATHER SEAL GUIDELINES:**

- WRAP ALL CONNECTORS WITH BLACK ELECTRICAL TAPE TO COVER ALL VENTILATIONS TO PREVENT AIR FROM ENTERING THE BUILDING. WEATHER SEAL IS TO BE REMOVED 3/4" FROM ON 2" HIGH TAPE CAN BE USED FOR THIS PURPOSE.
- WRAP THE LAST LAYER OF TAPE WITH A SECOND LAYER OF TAPE TO ENSURE THE SEAL IS COMPLETE. THE SECOND LAYER OF TAPE SHOULD BE PULLED TIGHT AND OVERLAP THE FIRST LAYER BY AT LEAST ONE (1) INCH. THE SECOND LAYER OF TAPE SHOULD BE PULLED TIGHT AND OVERLAP THE FIRST LAYER BY AT LEAST ONE (1) INCH.
- WRAP ALL CONNECTORS WITH BLACK ELECTRICAL TAPE TO COVER ALL VENTILATIONS TO PREVENT AIR FROM ENTERING THE BUILDING. WEATHER SEAL IS TO BE REMOVED 3/4" FROM ON 2" HIGH TAPE CAN BE USED FOR THIS PURPOSE.
- WRAP THE LAST LAYER OF TAPE WITH A SECOND LAYER OF TAPE TO ENSURE THE SEAL IS COMPLETE. THE SECOND LAYER OF TAPE SHOULD BE PULLED TIGHT AND OVERLAP THE FIRST LAYER BY AT LEAST ONE (1) INCH. THE SECOND LAYER OF TAPE SHOULD BE PULLED TIGHT AND OVERLAP THE FIRST LAYER BY AT LEAST ONE (1) INCH.
- OVERLAP THE TAPE SIZE OF THE PREVIOUS LAYER.
- ALWAYS FINISH THE LAST WRAP OF TAPE WITH A SHIMMING OF TAPE TO GO IN THE WEATHER SEAL TO ENSURE THE SEAL IS COMPLETE. THE SEAL SHOULD BE PULLED TIGHT AND OVERLAP THE PREVIOUS LAYER BY AT LEAST ONE (1) INCH.
- WRAP THE LAST LAYER OF TAPE WITH A SECOND LAYER OF TAPE TO ENSURE THE SEAL IS COMPLETE. THE SECOND LAYER OF TAPE SHOULD BE PULLED TIGHT AND OVERLAP THE FIRST LAYER BY AT LEAST ONE (1) INCH. THE SECOND LAYER OF TAPE SHOULD BE PULLED TIGHT AND OVERLAP THE FIRST LAYER BY AT LEAST ONE (1) INCH.

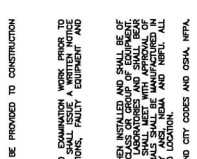
**SITE INFORMATION**

NE-MA-BSTM301-03310  
TMO ID: NE32086A\_21LAB  
8 HOWE STREET  
SOMERVILLE, MA 02145  
MIDDLESEX COUNTY

**DESIGN RECORD**

REV	DATE	DESCRIPTION	BY
1	04/01/19	PRELIMINARY	DR
2	06/05/19	FINAL	DVE
3	06/05/19	FOR REVIEW	CLE
4	01/26/20	MCINT REVISION	DRG
5	05/12/19	REVISION	NSB

**PROFESSIONAL STAMP**



**ENGINEER**

KRUPAKARAN KOLANDAVELU, P.E.  
MA PROFESSIONAL ENGINEER LIC. #50019

**SHEET TITLE**

WEATHER SEALING

**SHEET NUMBER**

02 OF 05

**GENERAL NOTES:**

- UNLESS OTHERWISE SPECIFIED, ALL WORK SHALL BE PERFORMED IN ACCORDANCE WITH THE NATIONAL ELECTRICAL CODE (NEC) AND ALL APPLICABLE LOCAL, STATE, AND FEDERAL REGULATIONS, ORDINANCES, RULES, REGULATIONS, AND CODES.
- THE CONTRACTOR SHALL BE RESPONSIBLE FOR OBTAINING ALL NECESSARY PERMITS FROM THE LOCAL, STATE, AND FEDERAL AUTHORITIES.
- THE CONTRACTOR SHALL MAINTAIN ACCESS TO ALL EXISTING UTILITIES AND SERVICES AT ALL TIMES.
- ALL WORK SHALL BE COMPLETED WITHIN THE SPECIFIED TIME FRAME.
- THE CONTRACTOR SHALL MAINTAIN A SAFE WORKING ENVIRONMENT AT ALL TIMES.
- ALL MATERIALS AND EQUIPMENT SHALL BE STORED IN AN ORGANIZED MANNER.
- ALL WORK SHALL BE COMPLETED IN ACCORDANCE WITH THE NATIONAL ELECTRICAL CODE (NEC).
- THE CONTRACTOR SHALL BE RESPONSIBLE FOR THE PROTECTION OF ALL EXISTING UTILITIES AND SERVICES.
- ALL WORK SHALL BE COMPLETED IN ACCORDANCE WITH THE NATIONAL ELECTRICAL CODE (NEC).
- THE CONTRACTOR SHALL BE RESPONSIBLE FOR THE PROTECTION OF ALL EXISTING UTILITIES AND SERVICES.
- ALL WORK SHALL BE COMPLETED IN ACCORDANCE WITH THE NATIONAL ELECTRICAL CODE (NEC).

**GROUNDING NOTES:**

- GROUNDING SHALL COMPLY WITH ARTICLE 250 OF THE NATIONAL ELECTRICAL CODE.
- ALL WORK SHALL BE PERFORMED IN ACCORDANCE WITH THE NATIONAL ELECTRICAL CODE (NEC).
- THE CONTRACTOR SHALL BE RESPONSIBLE FOR THE PROTECTION OF ALL EXISTING UTILITIES AND SERVICES.
- ALL WORK SHALL BE COMPLETED IN ACCORDANCE WITH THE NATIONAL ELECTRICAL CODE (NEC).
- THE CONTRACTOR SHALL BE RESPONSIBLE FOR THE PROTECTION OF ALL EXISTING UTILITIES AND SERVICES.
- ALL WORK SHALL BE COMPLETED IN ACCORDANCE WITH THE NATIONAL ELECTRICAL CODE (NEC).
- THE CONTRACTOR SHALL BE RESPONSIBLE FOR THE PROTECTION OF ALL EXISTING UTILITIES AND SERVICES.
- ALL WORK SHALL BE COMPLETED IN ACCORDANCE WITH THE NATIONAL ELECTRICAL CODE (NEC).
- THE CONTRACTOR SHALL BE RESPONSIBLE FOR THE PROTECTION OF ALL EXISTING UTILITIES AND SERVICES.
- ALL WORK SHALL BE COMPLETED IN ACCORDANCE WITH THE NATIONAL ELECTRICAL CODE (NEC).

**GROUNDING GUIDELINES:**

- ALL EQUIPMENT THAT IS INSTALLED OR MAY CAUSE ANY KIND OF ELECTRICAL CHARGE OR BUILD UP MUST HAVE PROPER AND ACCURATE GROUNDING IN PLACE TO PREVENT FROM EQUIPMENT DAMAGE AND SHOCK INJURIES.
- GROUNDING SHALL BE PERFORMED IN ACCORDANCE WITH THE NATIONAL ELECTRICAL CODE (NEC).
- THE CONTRACTOR SHALL BE RESPONSIBLE FOR THE PROTECTION OF ALL EXISTING UTILITIES AND SERVICES.
- ALL WORK SHALL BE COMPLETED IN ACCORDANCE WITH THE NATIONAL ELECTRICAL CODE (NEC).
- THE CONTRACTOR SHALL BE RESPONSIBLE FOR THE PROTECTION OF ALL EXISTING UTILITIES AND SERVICES.
- ALL WORK SHALL BE COMPLETED IN ACCORDANCE WITH THE NATIONAL ELECTRICAL CODE (NEC).
- THE CONTRACTOR SHALL BE RESPONSIBLE FOR THE PROTECTION OF ALL EXISTING UTILITIES AND SERVICES.
- ALL WORK SHALL BE COMPLETED IN ACCORDANCE WITH THE NATIONAL ELECTRICAL CODE (NEC).
- THE CONTRACTOR SHALL BE RESPONSIBLE FOR THE PROTECTION OF ALL EXISTING UTILITIES AND SERVICES.
- ALL WORK SHALL BE COMPLETED IN ACCORDANCE WITH THE NATIONAL ELECTRICAL CODE (NEC).

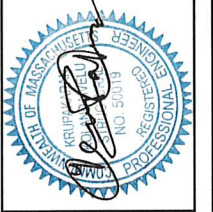
**ELECTRICAL NOTES:**

- CONTRACTOR SHALL PERFORM ALL VENTILATIONS, OBSERVATIONS, TESTS, AND EXAMINATIONS WORKING FROM THE DATE OF THE PROJECT MANAGER LISTING ALL UTILITIES, EQUIPMENT AND DISPARITIES.
- VERIFY HEIGHTS WITH PROJECT MANAGER PRIOR TO INSTALLATION.
- THE CONTRACTOR SHALL BE RESPONSIBLE FOR THE PROTECTION OF ALL EXISTING UTILITIES AND SERVICES.
- ALL WORK SHALL BE COMPLETED IN ACCORDANCE WITH THE NATIONAL ELECTRICAL CODE (NEC).
- THE CONTRACTOR SHALL BE RESPONSIBLE FOR THE PROTECTION OF ALL EXISTING UTILITIES AND SERVICES.
- ALL WORK SHALL BE COMPLETED IN ACCORDANCE WITH THE NATIONAL ELECTRICAL CODE (NEC).
- THE CONTRACTOR SHALL BE RESPONSIBLE FOR THE PROTECTION OF ALL EXISTING UTILITIES AND SERVICES.
- ALL WORK SHALL BE COMPLETED IN ACCORDANCE WITH THE NATIONAL ELECTRICAL CODE (NEC).
- THE CONTRACTOR SHALL BE RESPONSIBLE FOR THE PROTECTION OF ALL EXISTING UTILITIES AND SERVICES.
- ALL WORK SHALL BE COMPLETED IN ACCORDANCE WITH THE NATIONAL ELECTRICAL CODE (NEC).



REVISIONS

REV	DATE	DESCRIPTION	BY
4	01/20/20	MOUNT REVISED	DRG
3	09/17/19	REVISED	NSR
2	08/06/19	FINAL	COVE
1	05/15/19	POC REVISED	CA
0	04/09/19	PRELIMINARY	DFR



KRUPAKARAN KOLLANDAVELU, P.E.  
MA PROFESSIONAL ENGINEER LIC. #53619

ELEVATION

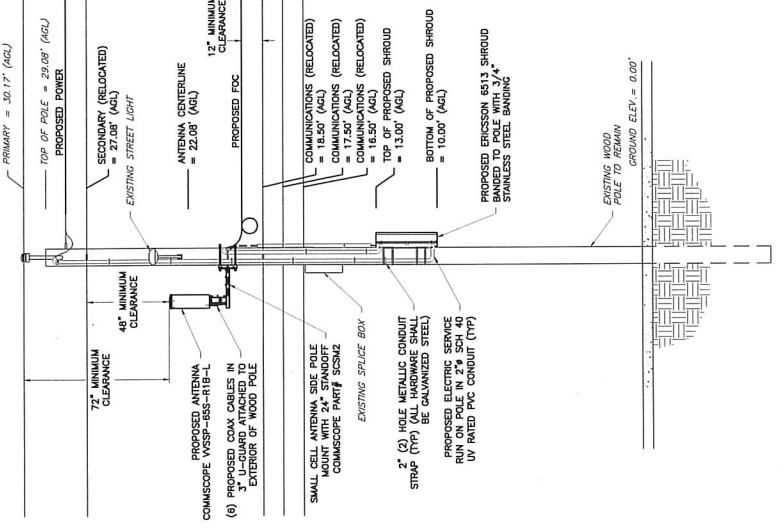
SHEET  
03 OF 05



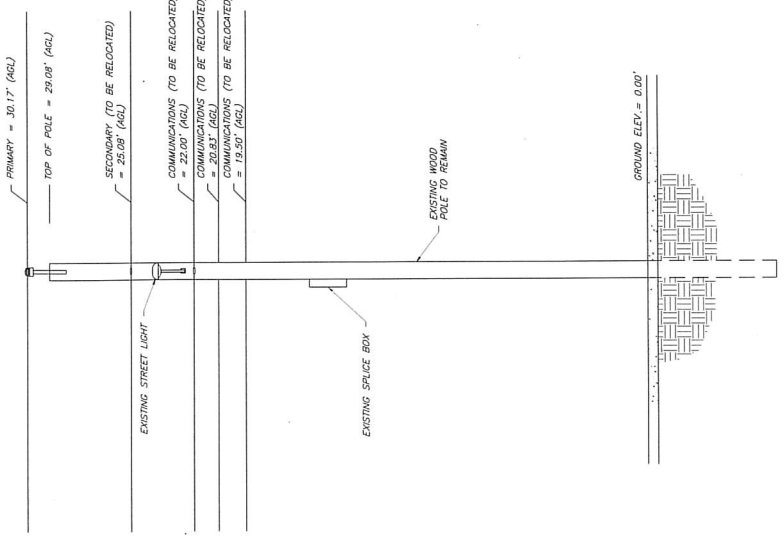
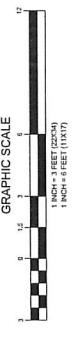
EXISTING CONDITIONS

- NOTES:**
- EQUIPMENT ELEVATION IS SUBJECT TO MAKE READY PERFORMED BY POLE OWNER.
  - NEW PLACED SHALL BE ASHA COMPLIANT AND DISPLAY THE FOLLOWING INFORMATION: TRANSMITTING SYSTEM, EQUIPMENT OWNER & PROPER CONTACT INFORMATION. INSTALL PER UTILITY COMPANY REQUIREMENTS AND VERIFY EXACT MOUNTING HEIGHT IN FIELD.
  - MAINTAIN MINIMUM OF 8'-6" FROM GROUND LEVEL TO BOTTOM OF PROPOSED SHROUD.
  - MAINTAIN MINIMUM OF 42" FROM TOP COMMUNICATION ATTACHMENT TO BOTTOM SECONDARY POWER ATTACHMENT.
  - MAINTAIN MINIMUM OF 48" CLEARANCE IN ANY DIRECTION FROM ANTENNA AND MOUNTING BRACKET TO NEAREST SECONDARY POWER CONNECTION.
  - MAINTAIN MINIMUM OF 12" FROM TOP COMMUNICATIONS LINE TO ANY ADDITIONAL COMMUNICATIONS LINE.
  - MAINTAIN MINIMUM OF 5' FROM GROUND LEVEL TO METER LOCATION.
  - MAINTAIN MINIMUM OF 6" CLEARANCE IN ANY DIRECTION FROM ANTENNA AND MOUNTING BRACKET TO NEAREST PRIMARY POWER CONNECTION.
  - EQUIPMENT TO BE INSTALLED ON OPPOSITE SIDE OF TRAFFIC FLOW.
  - POWER SUPPLY & WEATHERHEAD SHOULD BE INSTALLED ON THE SAME SIDE OF THE POLE WITH THE SECONDARY(S) AND COMMUNICATION CABLE(S) TO ACCOMMODATE CLIMBING OF THE POLE.

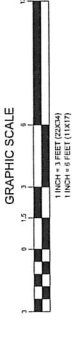
ATTACHMENT HEIGHTS, ANTENNA AND EQUIPMENT LOCATIONS  
PENDING MAKE-READY AND STRUCTURAL ANALYSIS



PROPOSED ELEVATION (LOOKING SOUTH)



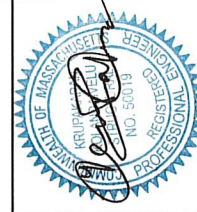
EXISTING ELEVATION (LOOKING SOUTH)





NE-MA-BSTN3101-03310  
 TMO ID: NE3208BA\_Z1LAB  
 8 HOWE STREET  
 SOMERVILLE, MA 02145  
 MIDDLESEX COUNTY

REV	DATE	DESCRIPTION	BY
4	01/20/20	ASMT REVISED	DHG
3	09/12/19	REVISED	NSB
2	03/26/19	FINAL	CVE
1	05/01/19	FOC REVISED	CLF
0	04/29/19	PRELIMINARY	DFR



KRUPAKARAN KOLLANDAVELU, P.E.  
 MA PROFESSIONAL ENGINEER LIC. #50019

ANTENNA &  
 EQUIPMENT  
 DETAILS

SHEET NUMBER  
**04 OF 05**

ENGINEERING FIRM

APPLICANT

SITE INFORMATION

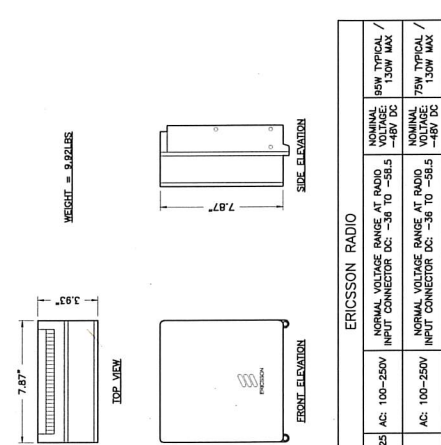
DESIGN RECORD

PROFESSIONAL STAMP

ENGINEER

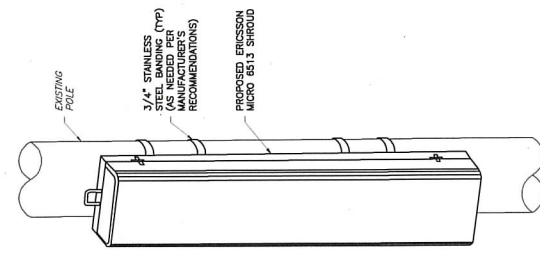
SHEET TITLE

SHEET NUMBER

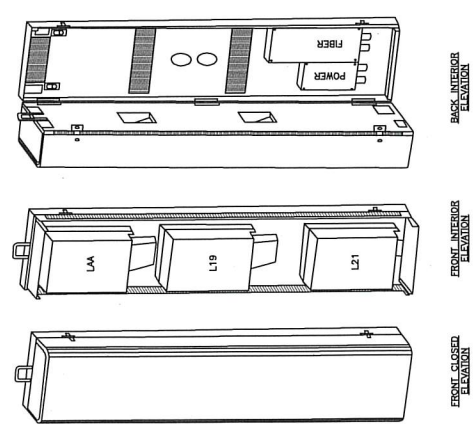


ERICSSON RADIO		NOMINAL VOLTAGE RANGE AT RADIO INPUT CONNECTOR DC: -56 TO -58.5	95W TYPICAL 1.30W MAX
2203 B86 & B25	AC: 100-250V	NORMAL VOLTAGE RANGE AT RADIO INPUT CONNECTOR DC: -56 TO -58.5	75W TYPICAL 1.30W MAX
2205 B48	AC: 100-250V	NORMAL VOLTAGE RANGE AT RADIO INPUT CONNECTOR DC: -56 TO -58.5	75W TYPICAL 1.30W MAX

3 ERICSSON REMOTE RADIO UNIT (RRU)

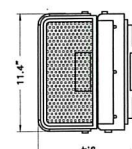


2 EQUIPMENT MOUNTING DETAIL

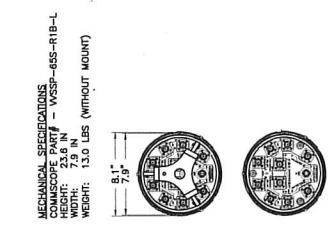
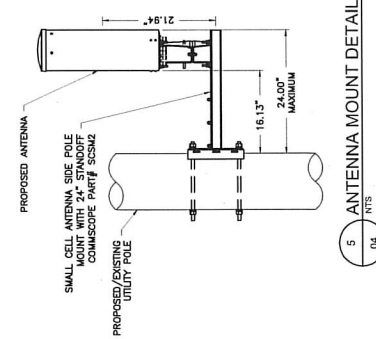
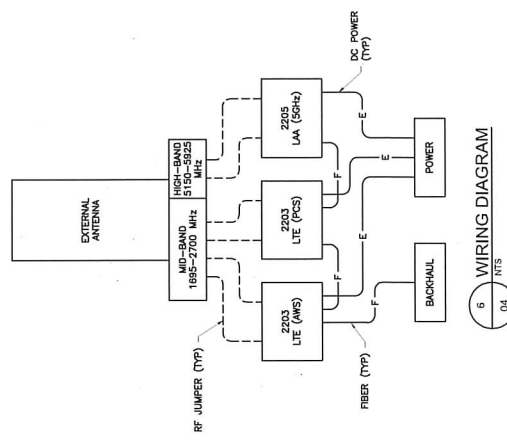


1 ERICSSON MICRO 6513 SHROUD DETAIL

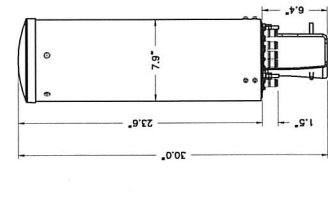
MECHANICAL SPECIFICATIONS  
 ERICSSON PART # - ENCLOSURE 6513  
 PART # - 6513-001  
 WIDTH: 11.4 IN  
 DEPTH: 9.4 IN  
 HEIGHT: 35.4 IN  
 WEIGHT: 71.4 LBS (FULLY EQUIPPED)



4 ANTENNA DETAIL



5 ANTENNA MOUNT DETAIL



**REVISIONS**

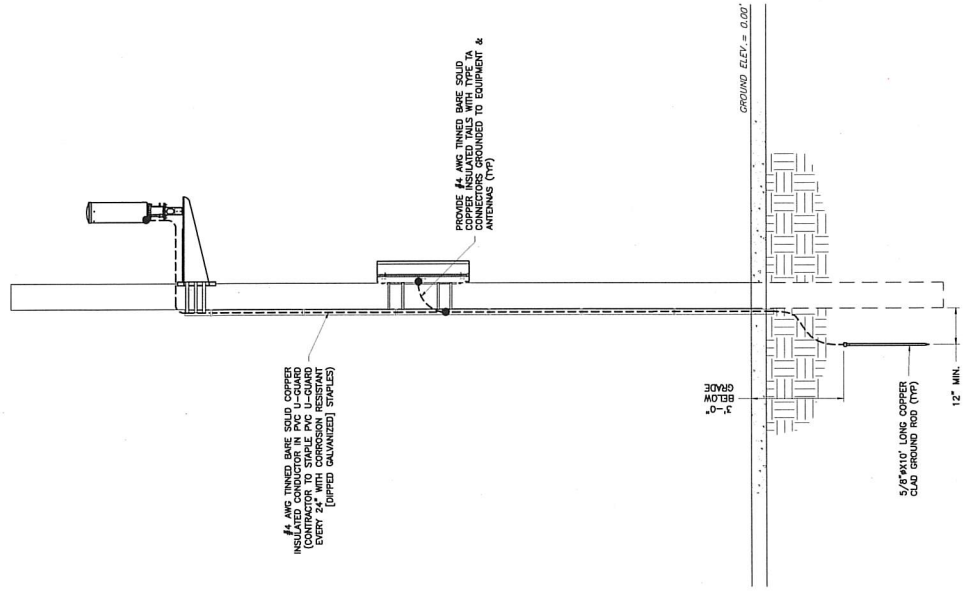
REV	DATE	DESCRIPTION	BY
4	01/26/20	MOUNT REVISED	DRG
3	08/12/19	REVISED	MSB
2	08/06/19	FINAL	CRE
1	05/15/19	POC REVISED	CA
0	04/09/19	PRELIMINARY	DFR



KRUPAKARAN KOLANDAVELU, P.E.  
MA PROFESSIONAL ENGINEER LIC #50019

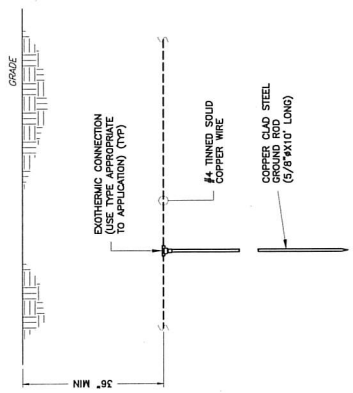
**ELECTRICAL & GROUNDING DETAILS**

ENGINEERING FIRM      APPLICANT      SITE INFORMATION      DESIGN RECORD      PROFESSIONAL STAMP      ENGINEER      SHEET TITLE      SHEET NUMBER

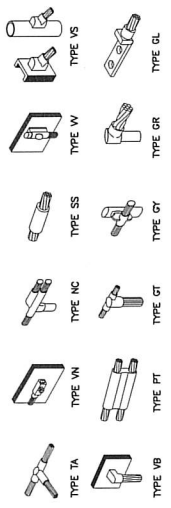


3 ELECTRICAL & GROUNDING RISER DIAGRAM

NOTE: EXISTING/PROPOSED UTILITY WIRES, SEWER, AND EXISTING EQUIPMENT NOT SHOWN FOR CLARITY.



1 TYPICAL GROUND ROD DETAIL



2 GROUNDING CONNECTION DETAILS