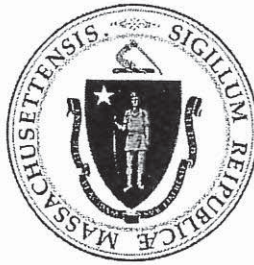


199126



**Unaccompanied Homeless Youth Commission
October 28, 2015**

AGENDA

1. Welcome & Introduction of Commission Members
Chair, Marylou Sudders, Secretary, Executive Office of Health & Human Services
2. Legal Obligations as Commission Members
Lauren Cleary, EOHHS and David Giannotti, State Ethics Commission
3. Overview of Unaccompanied Homeless Youth Commission Responsibilities
Robyn Kennedy, Executive Office of Health and Human Services
4. 2015 Youth Count Update
Kelly Turley, MA Coalition for the Homeless
5. Overview of Policy Census by the Boston University School of Social Work
Danielle Ferrier, Department of Children and Families
6. Discussion of Working Groups and Next Steps for Commission
Secretary Marylou Sudders
7. Closing
Secretary Marylou Sudders



THE 189TH GENERAL COURT OF
THE COMMONWEALTH OF MASSACHUSETTS

[Home](#) [Glossary](#) [FAQs](#)

Options

GO

[Massachusetts Laws](#)
[Bills](#)
[State Budget](#)
[People](#)
[Committees](#)
[Reports](#)
[Educate & Engage](#)
[Events](#)
[MyLegislature](#)
[Home](#) [Bills & Laws](#) [Laws](#) [Session Laws](#) [Acts of 2014](#) [Chapter 450](#)

Massachusetts Laws

Session Law

[Print Page](#)
[Massachusetts Constitution](#)
[General Laws](#)
[Session Laws](#)
[Rules](#)

Acts

2014

Jump to:

2014 ▼

Chapter 450

**AN ACT PROMOTING HOUSING AND SUPPORT SERVICES TO
UNACCOMPANIED HOMELESS YOUTHS**
[PREV](#) [NEXT](#)

*Be it enacted by the Senate and House of Representatives in General Court assembled,
and by the authority of the same as follows:*

SECTION 1. Chapter 6A of the General Laws is hereby amended by inserting after section 16V the following 2 sections:-

Section 16W. (a) As used in this section and section 16X, the following words shall have the following meanings unless the context clearly requires otherwise:

"Fixed, regular nighttime residence", a dwelling at which a person resides on a regular basis that provides safe shelter, sufficient for meeting both the physical and psychological needs typically met in home environments; provided, however, that "fixed, regular nighttime residence" shall not include: (i) a publicly or privately-operated institutional shelter designed to provide temporary living accommodations; (ii) transitional housing; (iii) temporary placement with a peer, friend or family member who has not offered a permanent residence, residential lease or temporary lodging for more than 30 days; or (iv) a public or private place not designed for or ordinarily used as a regular sleeping accommodation for human beings.

"Unaccompanied homeless youth", a person 24 years of age or younger who is not in the physical custody or care of a parent or legal guardian and who lacks a fixed, regular nighttime residence; provided, however, that "unaccompanied homeless youth" shall not include a person incarcerated or otherwise detained under federal or state law.

(b) There shall be a commission within the executive office of health and human services for the purpose of studying and making recommendations relative to services for unaccompanied homeless youth, with the goal of providing a comprehensive and effective response to the unique needs of this population. The focus of the commission's work shall include, but not be limited to: (i) an analysis of the barriers to serving unaccompanied homeless youth who are gay, lesbian, bisexual or transgender; (ii) an analysis of the barriers to serving unaccompanied youth under 18 years of age; (iii) an assessment of the impact of mandated reporting requirements on unaccompanied homeless youths' access to services; (iv) the commonwealth's ability to identify and connect with unaccompanied homeless youth; and (v) recommendations to reduce identified barriers to serving this population. The commission, in formulating its recommendations, shall take into account the best practices and policies in other states and jurisdictions.

The commission shall include: the secretary of health and human services or a designee, who shall serve as chair; the commissioner of children and families or a designee; the commissioner of elementary and secondary education or a designee; the commissioner of public health or a designee; the commissioner of mental health or a designee; the director of Medicaid or a designee; the commissioner of transitional assistance or a designee; the undersecretary for housing and community development or a designee; the commissioner of youth services or a designee; the senate and house chairs of the joint committee on children, families and persons with disabilities; 1 member of the senate; 1 member of the house of representatives; 1 member who shall be appointed by the house minority leader; 1 member who shall be appointed by the senate minority leader; 3 youths who have experienced homelessness who shall be appointed by the office of the child advocate; 3 direct service providers who work with unaccompanied homeless youths who shall be appointed by the governor; and 1 representative from each of the following organizations: the Massachusetts Coalition for the Homeless, Inc.; the Massachusetts Task Force on Youth Aging Out of DCF Care; the Massachusetts Appleseed Center for Law and Justice, Inc.; MassEquality Org, the Campaign for Equality, Inc.; the Massachusetts Housing and Shelter Alliance, Inc.; the Massachusetts Transgender Political Coalition, Inc. and the Boston Alliance of Gay, Lesbian, Bisexual and Transgender Youth. Nongovernmental members shall serve for 2-year terms and may be reappointed.

The commission shall submit an annual report by December 31 to the governor, the clerks of the house of representatives and the senate, the joint committee on children, families and persons with disabilities and the office of the child advocate. The report shall include, but not be limited to, the commission's findings and any recommendations for regulatory or legislative action, with a timeline for implementation, cost estimates and finance mechanisms, and shall detail the extent of homelessness among unaccompanied homeless youth in the commonwealth and the progress made toward implementing the commission's recommendations and any other efforts to address the needs of this population.

Section 16X. (a) Subject to appropriation or third party reimbursement, the executive office of health and human services shall enter into performance-based contracts with organizations and agencies to provide housing and support services to address the needs of unaccompanied homeless youths in urban, suburban and rural areas. In entering into such contracts, the executive office of health and human services shall take into consideration the recommendations of the commission on unaccompanied homeless youth established in section 16W on identifying, connecting and serving unaccompanied homeless youth, in general, and unaccompanied homeless youth under the age of 18 and youth who are lesbian, gay, bisexual or transgender, in particular. Contracts authorized in this section shall include housing services for unaccompanied homeless youth which may include, but shall not be limited to: emergency shelter; kinship home placements; short-term housing; and transition to independent living programs. Programs shall provide any such unaccompanied homeless youth with stable out-of-home placement, help to reunite any such youth with the youth's parent or legal guardian if family reunification is in the youth's best interest and help to create educational and residential stability. Additional support services may include, but shall not be limited to: individual, family and group counseling; access to medical, dental and mental health care; education and employment services; case management, advocacy and referral services; independent living skills training; and provision of basic needs.

(b) The executive office of health and human services shall monitor organizations awarded contracts under this section to ensure that appropriate and high-quality services are

being delivered to unaccompanied homeless youth and shall collect common data and outcome measures from these organizations and agencies. Data collected from the organizations and agencies, the incidence of unaccompanied youth homelessness in the commonwealth and the status of and any change in housing, residential stability, educational stability and outcomes and well-being of unaccompanied homeless youth shall be included in the annual report of the special commission on unaccompanied homeless youth pursuant to section 16W.

SECTION 2. The appointed members of the commission established in section 16W of chapter 6A of the General Laws shall be appointed within 90 days after the effective date of this act.

SECTION 3. Section 208 of chapter 139 of the acts of 2012 is hereby repealed.

Approved, January 6, 2015.

[Show / Hide Site Map](#)

[Mass.gov](#) | [Site Map](#) | [Site Policy](#) | [Contact Us](#)

Copyright © 2015 The General Court, All Rights Reserved

199126

Information on each agency's data collection	CASPAR Inc	CSLS	SHC	VoA	RESPOND Inc	Somerville Public Schools	Youth Harbors	Just a Start	Homelessness Prevention Program (CAAS)
Which definition of homeless/homelessness does your organization use?	HUD	Don't have definition, just report if someone has been evicted from public housing or shelter	HUD for Passages case management, Perm supportive housing, and rapid rehousing	HUD	HUD	Definition of Homeless Unaccompanied Youth for MA under Executive Office of Health and Human Services			McKinney-Vento Act Education, HUD
Does your organization have any other distinguishing features for who it serves?		received a written note to vacate current home with no other housing options secured, paying more than 50% of income for rent and utilities, or living doubled up or in unstable housing	PASS program and Prevention: households who are on the verge of becoming homeless due to loss of income, loss of household member, rent increase making rent more than 50% of income	HUD	Homeless students/unaccompanied youth	Homeless teenage mothers and their children			
Does your organization use any definition of "at risk of homelessness" organization's data in? i.e. calendar year, fiscal year, information on who/how many people are using your services		calendar year	calendar year						income limit is 125% of the federal poverty level; anyone at this income level not already in subsidized or public housing is essentially at risk of homelessness


Total number of people served by your organization within the past year?	HMIS	Lotus Notes	CSV	excel	Database ref: excel	yes	Excel	PROMIS database
Number of families served by your organization within the past year?		Lotus Notes	CSV	excel	Database ref: excel		Excel	PROMIS database
Total number of children in the past year?		Lotus Notes	CSV	excel	Database ref: excel	yes		
How many people from Somerville used your services?	Excel/HMIS	Lotus Notes		excel	Database ref: excel	yes		PROMIS database
How many people from outside Somerville used your services?	Excel/HMIS	Lotus Notes		excel	Database reports			
Age	HMIS	Lotus Notes	CSV	excel	yes	yes	Excel	PROMIS database
Gender	HMIS	Lotus Notes	CSV	excel	yes	yes	Excel	PROMIS database
Race	HMIS	Lotus Notes	CSV	excel	yes	yes	Excel	PROMIS database
Ethnicity	HMIS	Lotus Notes	CSV	excel	yes		Excel	PROMIS database
Country of origin		Lotus Notes			yes		Excel	PROMIS database
Language Spoken		Lotus Notes	CSV		yes		Excel	PROMIS database
Other collected data points	Excel/HMIS	Lotus Notes	CSV		yes		Excel	PROMIS database
In what type of housing do the people who use your services live currently?								
Do they own or rent?	Excel/HMIS	Lotus Notes	CSV	excel	yes	yes		PROMIS database
Average monthly payment/average monthly rent						yes		PROMIS database
Length of time residing at current address				excel	yes	yes	Excel	PROMIS database
Income levels of people who use your services		Lotus Notes	CSV	excel	yes	yes		PROMIS database
How many live in subsidized housing?		Lotus Notes		excel				Individual records
How many ever lived in subsidized housing?				excel				Individual records
Of clients reporting living in a house, how many people are currently living in the house?		Lotus Notes				yes		Individual records
How many people are meant to live in that house?						yes		

How many people are living in each room?					yes		
Are families "doubled-up" or staying in a room that has more people than it was intended for?	Lotus Notes	CSV			yes		Individual records
How many moves/residence changes over the past year?					yes		
How many people who use your services have ever been homeless?	HMIS		excel		yes		Intake paperwork
In the past year?	HMIS	CSV	excel		yes		Intake paperwork
Length of homelessness?			excel		yes		Intake paperwork
How long have people who have used your services lived in Somerville?					yes	excel	PROMIS database
What other service programs are individuals are enrolled in?					yes		
Type of health insurance, if any, of individuals who used services?	HMIS				yes		Intake paperwork
Health status of individuals who used services?	HMIS				yes		Intake paperwork
					yes	clinical paperwork	collect, but not compiled
How many total people are homeless in Somerville?	HMIS	Lotus Notes	CSV	excel		Excel	PROMIS database
How many unduplicated clients meet the HUD definition of homeless?	HMIS		CSV	excel			PROMIS database
How many homeless individuals are there in Somerville?	HMIS	Lotus Notes	CSV	excel		Excel	PROMIS database
How many homeless families with children are there in Somerville?		Lotus Notes	CSV	excel		Excel	PROMIS database
How many individuals are "at risk of homelessness" in Somerville?		Lotus Notes	CSV	excel	yes		
How many families are "at risk of homelessness" in Somerville?		Lotus Notes	CSV	excel			

How many children who are students in Somerville Public Schools were determined to be homeless this past year, and how many families does that represent? Where are these families living (type of housing and what city)?				excel				
How many unaccompanied youth were identified this past school year?				word	yes			
How many currently homeless families previously lived in subsidized housing?			excel	excel				PROMIS database/individual records
How many people in subsidized housing were ever homeless?			excel					
How many people in subsidized housing are "at risk of homelessness"	Lotus Notes		excel					
How many households in Somerville are cost-burdened (spending more than 30% of their income on housing)	Lotus Notes				yes			individual records
How many households in Somerville are severely cost-burdened (spending more than 50% of their income on housing)	Lotus Notes				yes			individual records
How many rental units of greater than 2 bedrooms have been lost to condo conversion in the past two years?								
How many Section 8 rental units have been lost due to house or condo sales?								
What are the turnover rates in subsidized housing in Somerville? Family housing?								

199/26

10/28/2015



Homelessness Task Force Update

October 28, 2015

Partners

• City of Somerville <ul style="list-style-type: none">◦ HHS◦ Housing◦ SomerPromise◦ Police	• Somerville Public Schools
• CHA	• Somerville Family Learning Collaborative
• CAAS	• Haitian Coalition
• Somerville Homeless Coalition	• Wayside Youth
• ISPG/Health	• JRI – Youth Harbor
• Welcome Project	• Somerville Community Corp

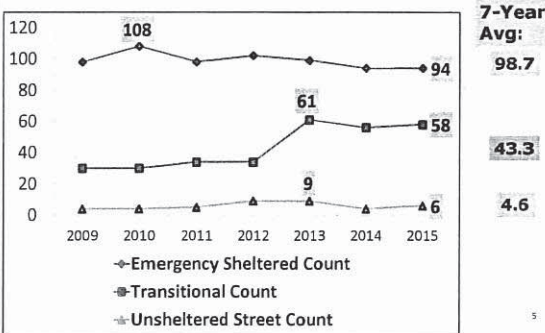
Task Force

• Impetus: Reported increase in homeless, unaccompanied minors & youths in schools	Task Force Objectives:
• Homeless Students: <ul style="list-style-type: none">◦ SY14 High: 78◦ End of SY 15: 91◦ Oct '15: 63	a) Clean/synchronize/analyze data
• Key Issues: <ul style="list-style-type: none">◦ Data quality, coordination◦ Various monthly meetings	b) Map key homelessness systems
	c) Develop problem statement
	d) Identify best practices
	e) Propose policy/program interventions

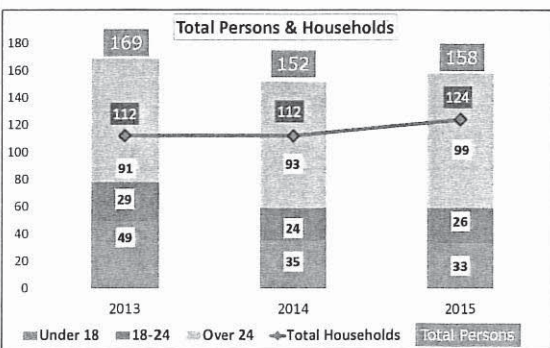
Finding accurate data

- Point In Time (PIT)
- Data collection
- School data
- Youth Harbor
- Definitions
- Barriers
 - Definitions
 - Requirements for program participation
 - Data sharing/availability
 - Agency staff capacity
 - Un/under reporting

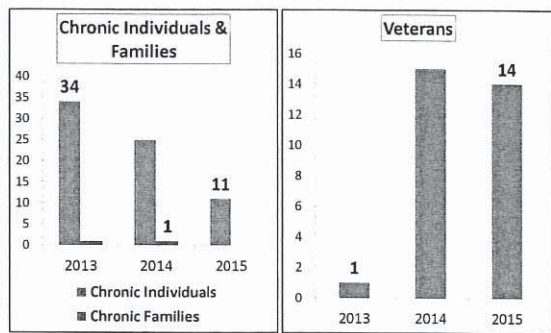
Recent Trends: Somerville Point-in-Time (PIT) Count, 2009-2015



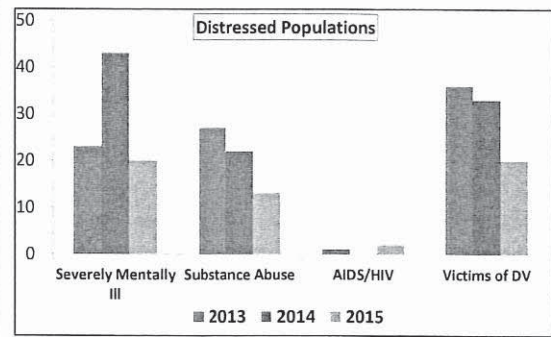
Household Structure: PIT 2013-2015



Homeless Subpopulation: PIT 2013-2015



Homeless Subpopulation: PIT 2013-2015



Somerville Public Schools

SPS Homeless Students											
Month	Sep-13	Oct-13	Nov-13	Dec-13	Jan-14	Feb-14	Mar-14	Apr-14	May-14	Jun-14	
Previous Month	0	46	56	52	60	65	70	77	78	76	
Total New	46	17	4	11	10	4	9	5	4	3	
No longer homeless	0	2	3	3	4	0	2	4	6	2	
Total homeless	46	56	52	60	66	70	77	78	76	77	
for the month											
Month	Sep-14	Oct-14	Nov-14	Dec-14	Jan-15	Feb-15	Mar-15	Apr-15	May-15	Jun-15	
Previous Month	0	42	59	46	72	71	71	82	86	91	
Total New	42	7	5	24	4	1	12	7	5	9	
No longer homeless	0	0	0	0	5	1	1	3	0	0	
Total homeless	42	49	48	72	71	71	82	86	91	91	
for the month											
Total Homeless Students BY 12/15		107									
Month	Sep-15	Oct-15									
Previous Month	0	44									
Total New	44	19									
No longer homeless	4	0									
Total homeless	44	63									
for the month											

Unaccompanied Minors from Central America

Unaccompanied Minors from Central America	Sep-15	Sep-15	Sep-14
PK - K	4	3	0
Gr 1 - 8	7	19	13
Gr 9 - 12	11	34	36
Total	22	56	49

Unaccompanied Minors – Youth who cross the border alone
 Unaccompanied youth – Youth who are not with parent/guardian.

10

Mass Department of Elementary and Secondary Education – Reported #s

	2013-2014	2014-2015	2015-2016	2016-2017	2017-2018	2018-2019
Shelters	3,231	3,707	3,332	3,636	4,425	5,070
Doubled-up	5,549	5,839	6,111	6,744	6,813	7,620
Unaccompanied Youth	735	746	820	935	894	861
Not Sheltered	84	58	54	109	104	171
Hotels/Motels	1,136	1,891	2,733	2,382	3,653	3,339
Awaiting Foster Care	2,064	2,013	2,013	1,786	2,000	2,232
Total	13,099	14,247	15,085	15,662	17,395	19,345

11

Youth Harbor – client numbers

	2/2013-8/2013	9/2013-8/2014	9/2014-8/2015	9/2015-present
Experienced Homelessness Prior to YH	7	9	12	8
At-risk of Homelessness at Intake	1	3	5	2
Received/Eligible for Rental Assistance	2	6	9	6
Investigations served	12	7	10	4

12

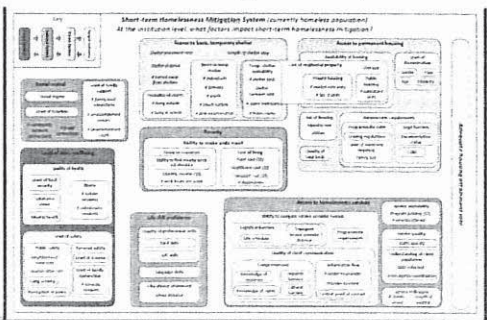
Housing Inventory

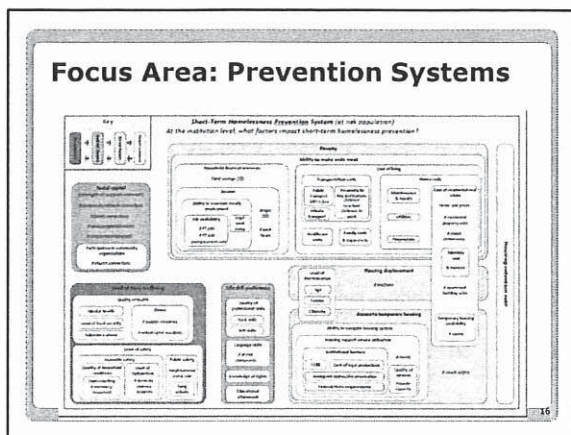
Emergency Beds	Transitional Beds	Permanent Beds
107	72	135

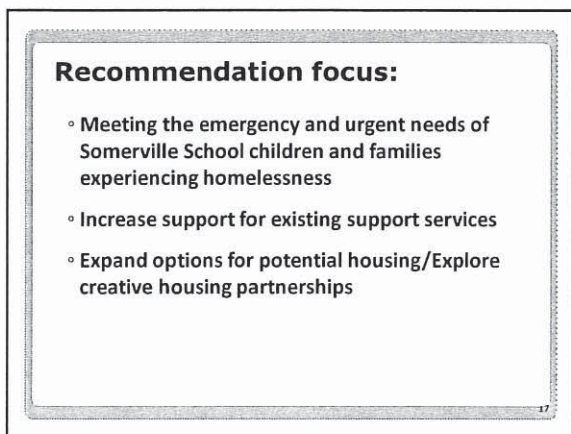
Focus Area

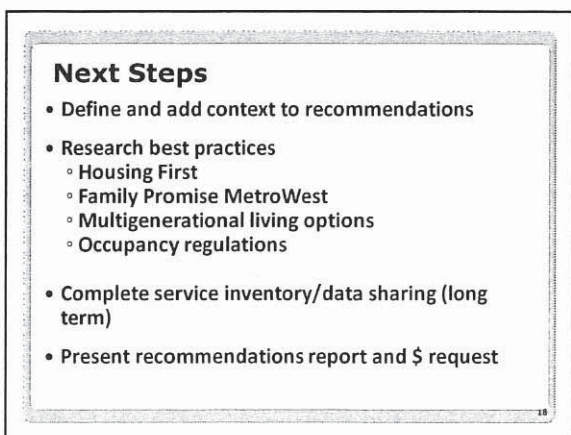
- Somerville Public School Students and Families who are
 1. Currently experiencing homelessness
 2. At risk of experiencing homelessness

Focus Area: Mitigation Systems



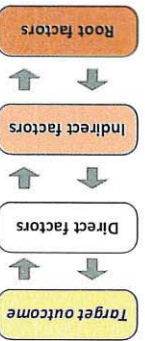




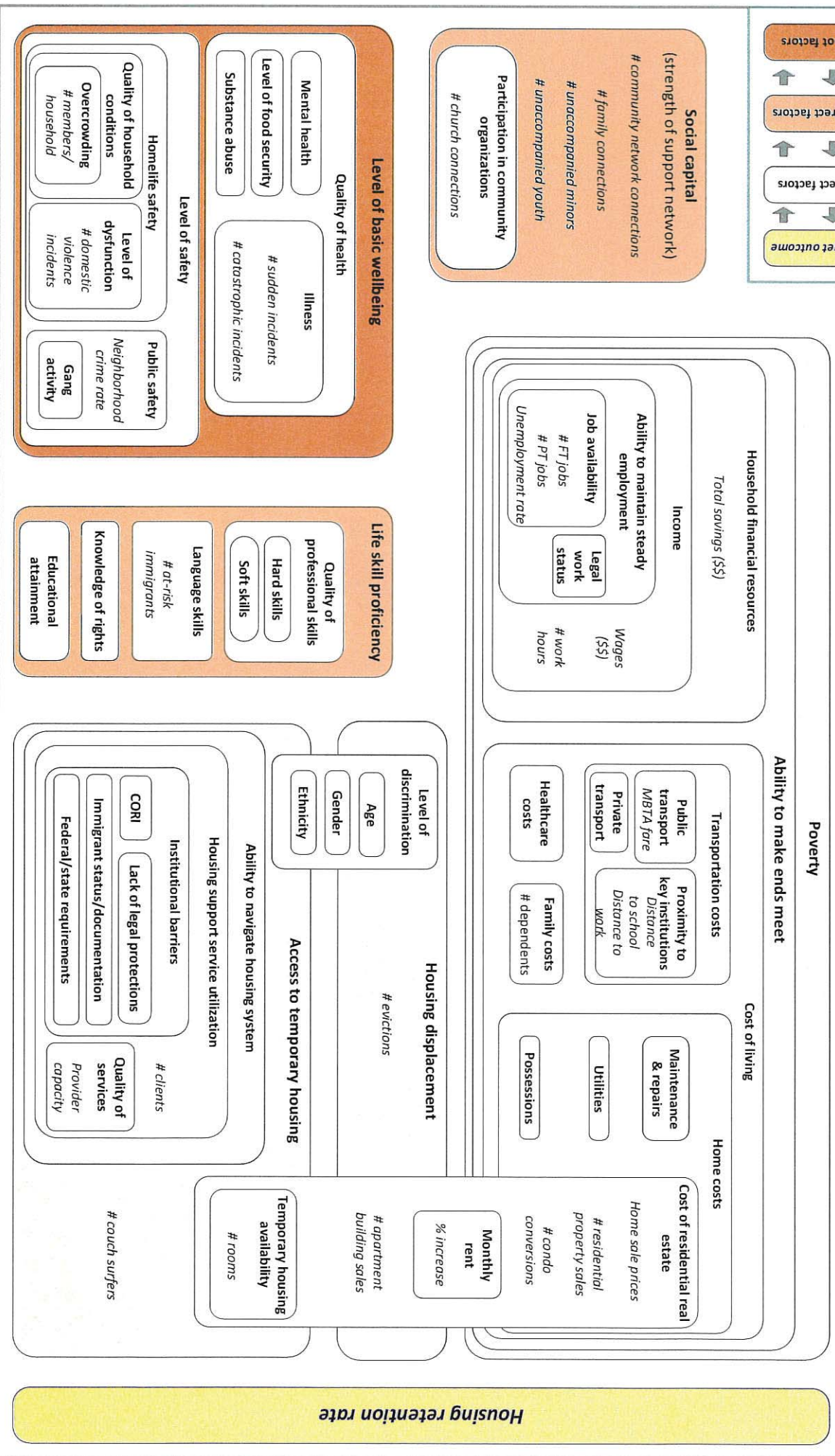


199126

Key

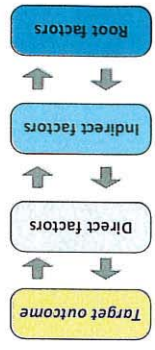


Short-Term Homelessness Prevention System (at risk population)
At the institution level, what factors impact short-term homelessness prevention?

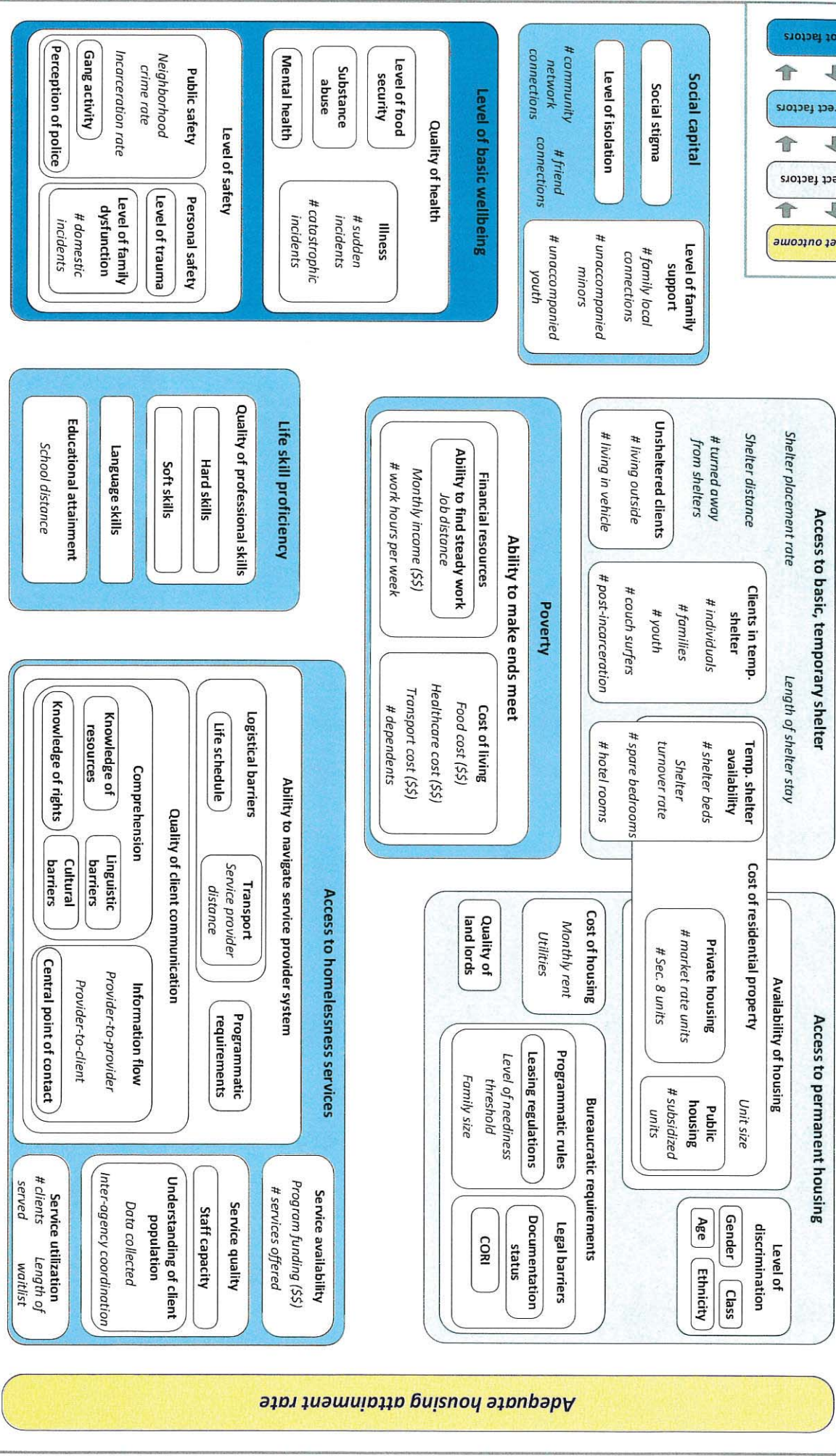


199126

Key



Short-term Homelessness Mitigation System (currently homeless population) At the institution level, what factors impact short-term homelessness mitigation?



Adequate housing attainment rate