



Finance Committee

December 14, 2021

Dilboy Stadium Renovation

Public Space & Urban Forestry:
Luisa Oliveira, ASLA, Director
Arn Franzen, Project Manager

Parks & Recreation:
Jill Lathan, Director
Ben Waldrip, Director of Operations

Dilboy Stadium

Budget: \$1,591,206.00

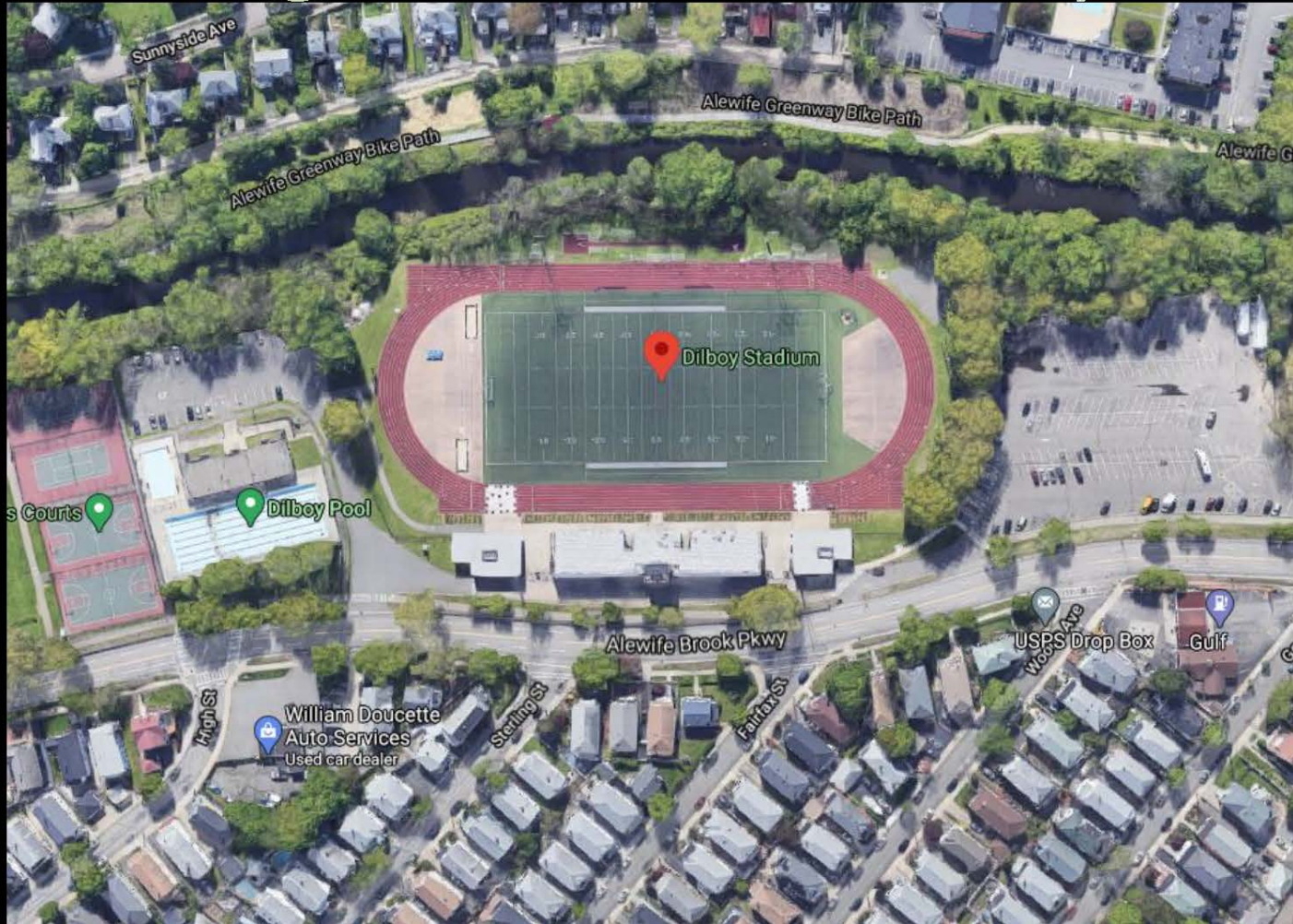
- Existing Conditions of the Fields
- Field Design
- Materials
- Schedule

Existing Conditions

Constructed in 2006 - 14 years ago

- Synthetic turf field surface in poor condition
- Running track requires resurfacing
- Safety concerns
- Drainage improvements

Existing Conditions Dilboy Stadium

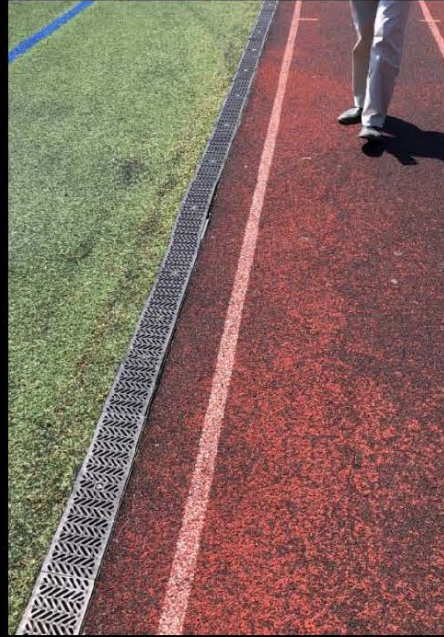


Aerial view

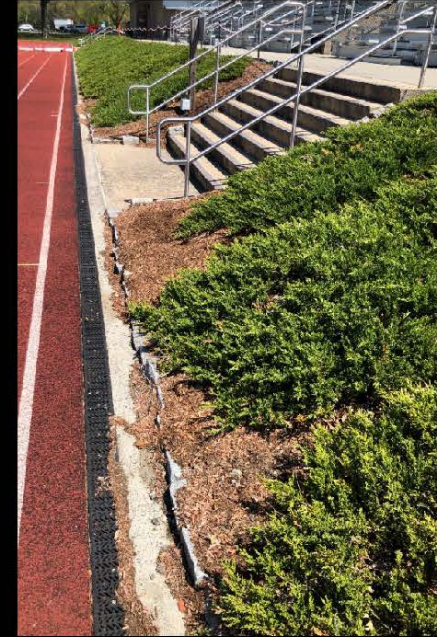
Existing Conditions Dilboy Stadium



Synthetic Turf Surface in poor condition

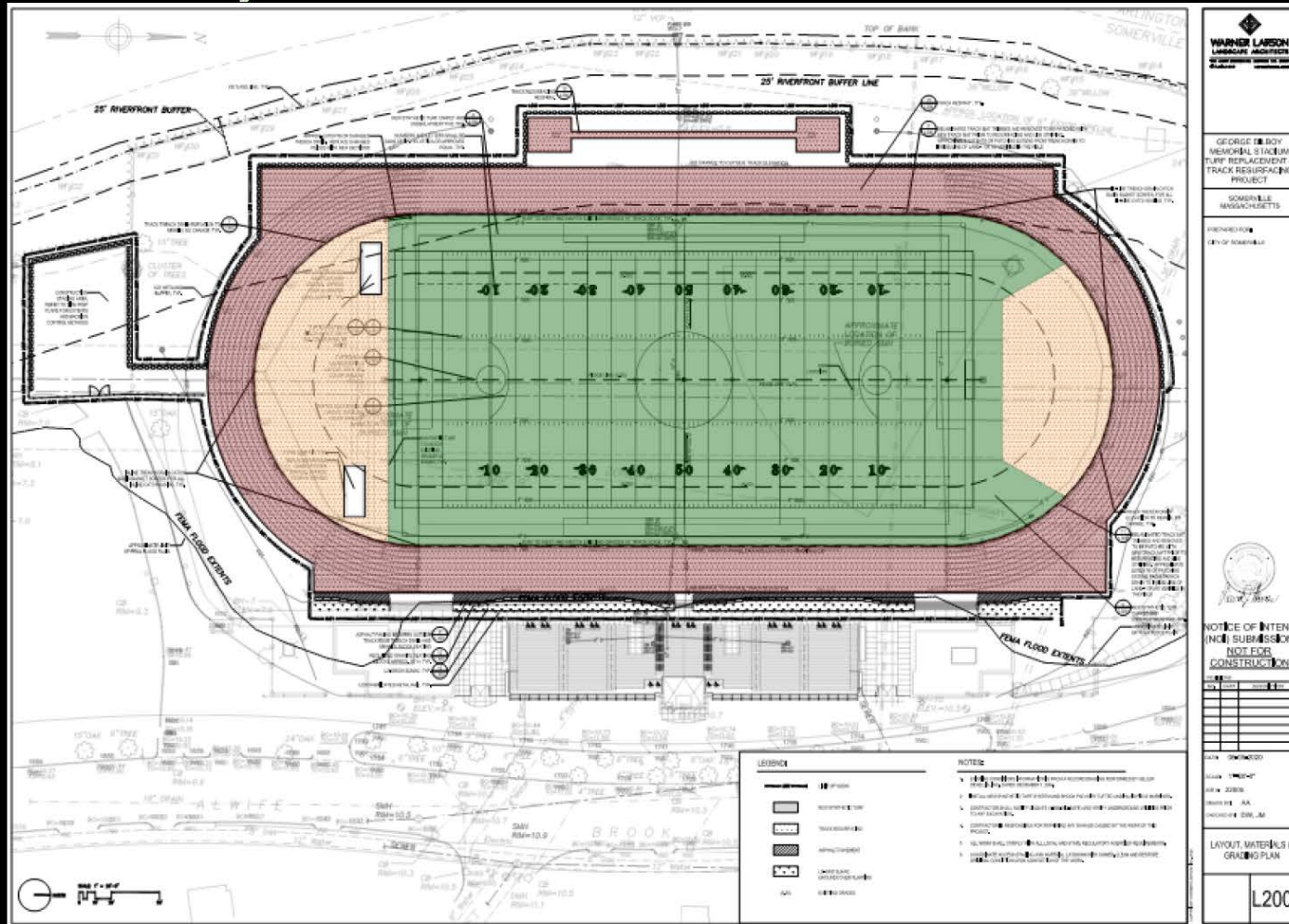


Running Track Surface worn



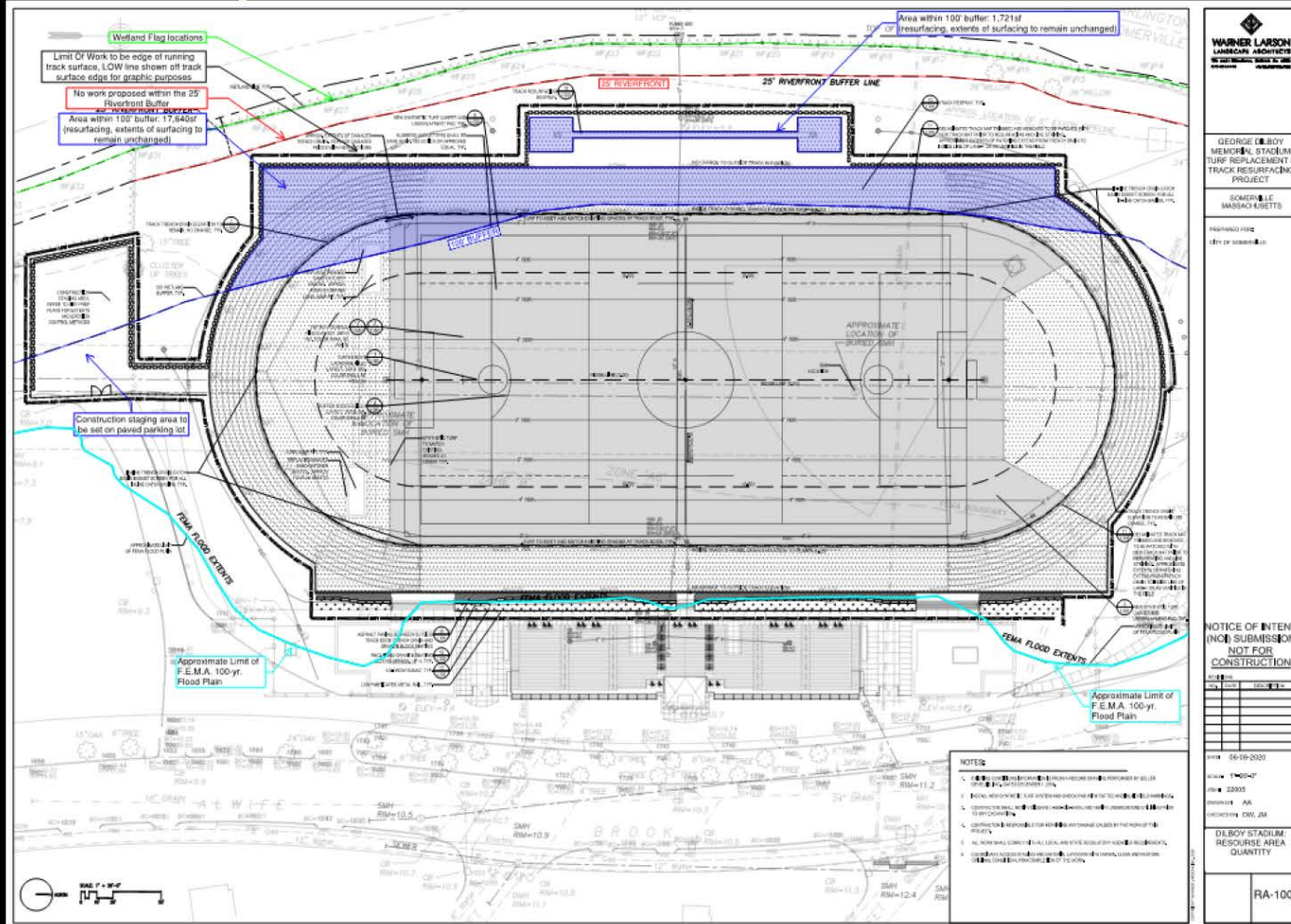
Spectator/Athlete containment

Dilboy Stadium Plan



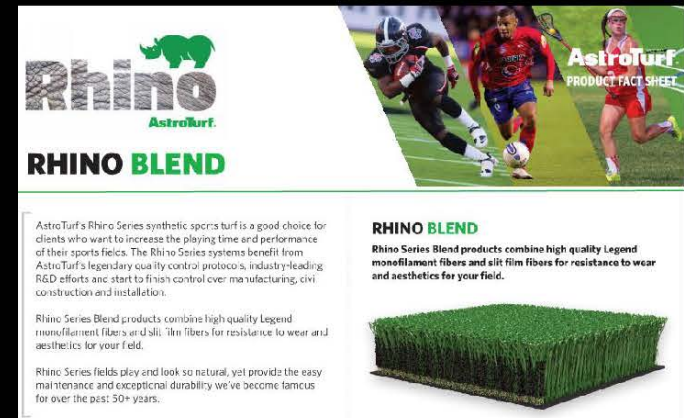
Athletic field layout

Dilboy Stadium Buffer Zones



Materials

- Synthetic Turf Carpet
 - Dual fiber turf
- Synthetic Turf Infill
 - Plant-based infill material
 - Sand
- Synthetic Turf Shock Pad
 - 17mm
 - Expanded polypropylene



Rhino
AstroTurf

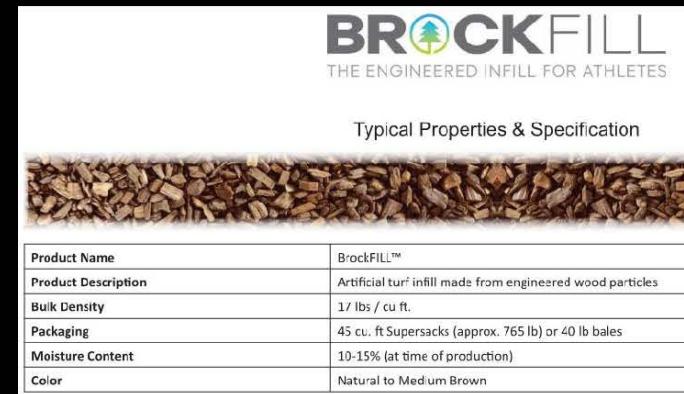

RHINO BLEND

AstroTurf's Rhino Series synthetic sports turf is a good choice for clients who want to increase the playing time and performance of their sports fields. The Rhino Series systems benefit from AstroTurf's legendary quality control protocols, industry-leading R&D efforts and start to finish control over manufacturing, civil construction and installation.

Rhino Series Blend products combine high quality Legend monofilament fibers and slit film fibers for resistance to wear and aesthetics for your field.


Rhino Series fields play and look so natural, yet provide the easy maintenance and exceptional durability we've become famous for over the past 50+ years.

RHINO BLEND
Rhino Series Blend products combine high quality Legend monofilament fibers and slit film fibers for resistance to wear and aesthetics for your field.



BROCKFILL
THE ENGINEERED INFILL FOR ATHLETES

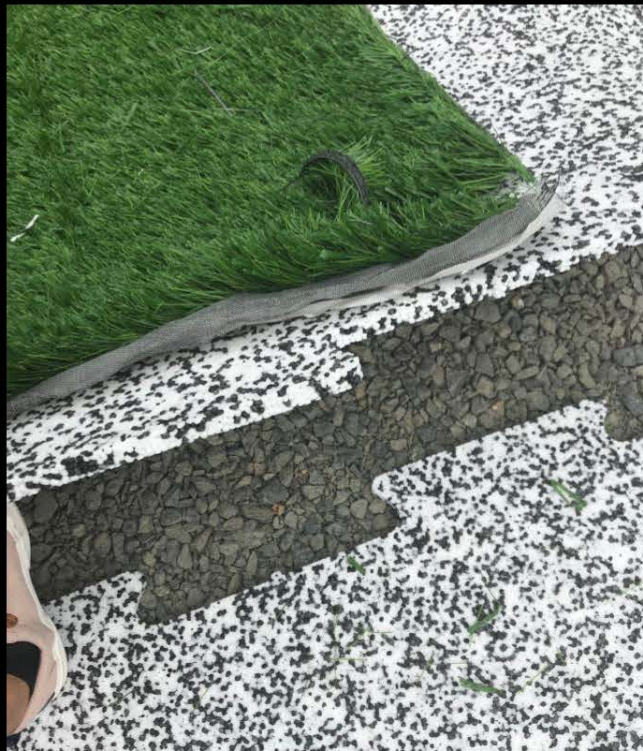
Typical Properties & Specification



Product Name	BrockFILL™
Product Description	Artificial turf infill made from engineered wood particles
Bulk Density	17 lbs / cu ft.
Packaging	45 cu. ft. Supersacks (approx. 765 lb) or 40 lb bales
Moisture Content	10-15% (at time of production)
Color	Natural to Medium Brown

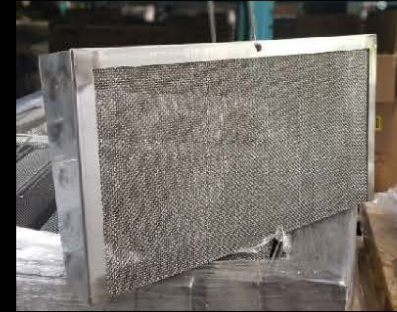


Capuano Field at Glen Park



Materials

- Inline Catch Basin Screen
 - S.S. mesh screen
 - Filter insert
- Inspection of drainage system
 - Clean out sumps
 - Confirmed operation of BackFlow Preventor
- Resurfacing of Running Track
 - New wearing layer
 - Restripe lane markings



Schedule

- Public Meeting
- Conservation Commission, DCR, DEP
- Finance Committee Dec 14, 2020
- Bid project an 2021
- Construction Spring of 2021
 - Field will be closed to the public during construction
- Projected reopening July 2021