



**CITY OF SOMERVILLE**  
Commonwealth of Massachusetts  
93 Highland Avenue  
Somerville, MA 02143  
(617) 625-6600

## **BUSINESS LICENSE APPLICATION - Grant of Location**

File #: 20-013760

License #: BL20-000121

Address: 400 SOMERVILLE AVE

Licensee: Hayleigh Walker Siena Engineering Group Inc.

DBA Name: TC Systems Inc

Business Ownership Type: Corporation

Legal Name of Entity: TC Systems, Inc.

Owners/Officers: , , ,

### **License Information:**

**Grant of location issued to:** TC Systems Inc.

**Describe the reason for the work, and the intended beneficiaries:** This work is to provide service to customers in the area

**Insert here the same detailed description of the work as appears in the attached Grant of Location**

**Order:** The installation shall begin at the existing utility pole #68/4 located on Church Street and extend to where it reaches the proposed Extenet handhole to be placed on Somerville Ave; a total distance of approx. 295ft. This installation will also include the placement of two intermediate concrete handholes.

Approval Conditions:

**Approved By:**

**Karla Cuarezma, Approved**

**Malik Drayton, Approved with Conditions**

APPROVAL CONDITION: MD20200901: Contractor shall take all necessary precautions to avoid damaging any tree or tree part with equipment.

APPROVAL CONDITION: MD20200901: All nearby street tree(s) shall be protected prior to and during all construction activities using TREE BOX or TREE WRAPS. . TREE BOX shall be constructed from 2 in. x 4 in. lumber creating a box around the border of the tree pit with 2 in. x 4 in. lumber standing straight up at the corners and wrapped with orange snow fence. Detail attached. . TREE WRAPS (TREE TRUNK WRAPPING PROTECTION LUMBER) shall consist of 2 in. x 4 in. and 8 ft. height lumber wired together in close spacing with zip ties or 16 gauge galvanized steel wire to form a protective enclosure around tree trunks. Use burlap to separate the wood from the bark if necessary to prevent wood from scraping or bruising bark. Do not use staples or puncture the trunk in any way.

APPROVAL CONDITION: MD20200901: Any tree roots less than two (2) inches in diameter that cannot be avoided during construction shall be carefully and cleanly cut with a clean pair of pruning shears or loppers. Roots are to be cut back flush with the edge of the trench. If any tree roots greater than two (2) inches in diameter are encountered, stop work immediately and contact the City Urban Forester. Any and all pruning of roots greater than 2 inches in diameter must be completed under the supervision of the City Urban Forester.

**Mark Lawhorne, Approved**  
**John J. Long, Approved**



CITY OF SOMERVILLE, MASSACHUSETTS  
CITY CLERK'S OFFICE  
JOSEPH A. CURTATONE  
MAYOR

JOHN J. LONG  
CITY CLERK

September 16, 2020

**NOTICE OF PUBLIC HEARING**

You are hereby notified that the Somerville City Council will hold a Public Hearing on the following Petition. You are receiving this Notice because the Petitioner has reported that you own property that abuts the work that is being proposed. You and other members of the public are invited to attend and be heard at this Hearing.

Because of Governor Baker's and Mayor Curtatone's recent orders limiting the number of people that may gather in one place, **this meeting of the City Council will be conducted via remote participation, online in a webinar hosted on the GoToWebinar platform.**

You have two ways to be heard at this meeting:

1. To attend and be heard, enter the link exactly as it appears below into your internet browser any time before the meeting. You will then be asked to register for the meeting. After registering, you will receive an email with instructions to join the webinar when it starts.
2. If you are unable to attend but wish to be heard, you may send written comments by US mail to the City Clerk at the address below, or by email to [cityclerk@somervillema.gov](mailto:cityclerk@somervillema.gov). Your comments must arrive no later than 12 Noon on the day of the Hearing, in order to be sure they are conveyed to the Council.

**PETITION:** TC Systems Inc seeks a Grant of Location to install a total of 295 feet of conduit from utility pole 68/4 at the intersection of Church Street and Somerville Avenue, through two new handholes in Somerville Avenue then ending at a proposed Extenet handhole at the intersection of Quincy Street and Somerville Ave.

**PLACE:** <https://attendee.gotowebinar.com/register/7452069109734289164>.

**TIME:** Thursday, September 24, 2020, at 7:00 PM.

**PURPOSE:** The work is necessary to provide or improve service to the surrounding area.



LOCUS MAP  
NOT TO SCALE

# PROPOSED CONDUIT PLACEMENT SOMERVILLE AVENUE AT CHURCH STREET SOMERVILLE, MASSACHUSETTS

CONDUIT CONSTRUCTION PLANS  
MIDDLESEX COUNTY  
AUGUST 20, 2020  
PERMIT ISSUE

PRELIMINARY  
NOT FOR CONSTRUCTION



## LIST OF DRAWINGS

	COVER
PT001	LIST OF DRAWINGS
PT002	LEGEND & REFERENCES
DN001 TO DN003	PROPOSED CONDUIT PLACEMENT PLANS
DT001	TYPICAL TRENCH & SURFACE RESTORATION DETAILS
DT002	CONCRETE HANDHOLE & RISER POLE DETAILS

ISSUE DATE:	INITIALS
1. AUGUST 20, 2020 PERMIT ISSUE	JCC

**PRELIMINARY**  
**NOT FOR CONSTRUCTION**

**NOTES:**  
1. SURFACE UTILITY LINES, AS SHOWN HEREON, WERE COMPILED ACCORDING TO AVAILABLE RECORD INFORMATION FROM THE INFLUENCED COMPANIES AND PUBLIC AGENCIES, AND THEIR LOCATIONS ARE APPROXIMATE ONLY. ACTUAL LOCATIONS MUST BE DETERMINED IN THE FIELD PRIOR TO ANY CONSTRUCTION ACTIVITIES. SIENA ENGINEERING GROUP ASSUMES NO RESPONSIBILITY FOR DAMAGES INCURRED AS A RESULT OF UTILITIES OMITTED OR INACCURATELY SHOWN.



Call before you dig.

**AT&T PROPRIETARY**  
(Internal Use Only)

Not for disclosure outside the AT&T companies, except under written agreement.

2020 AT&T Intellectual Property. All Rights Reserved

AT&T PROPRIETARY-This information constitutes confidential trade secrets and commercial or financial information owned by AT&T and is shared for Critical Infrastructure Protection purposes only. It is exempt from disclosure under the Freedom of Information Act (5 U.S.C. 552) Exemptions (b)(3)&(4), and its disclosure is prohibited under the Trade Secrets Act.

(18 U.S.C. 1905), the Critical Infrastructure Information Act of 2002, 6 U.S.C. 133, and any State or local law requiring disclosure of information or records. This information must not be copied or distributed to others not agreed upon by AT&T, but in all events do not copy or distribute to such others without notification pursuant to Executive Order 12800.

PREPARED FOR RECORD  
APPROVED FOR: \_\_\_\_\_  
OUTSIDE PLANT ENGINEER DATE

**TC SYSTEMS, INC**  
An Affiliate of **AT&T**



DRAWN BY: \_\_\_\_\_  
CHECKED BY: \_\_\_\_\_  
APPROVED BY: \_\_\_\_\_

**PROPRIETARY**  
USE PURSUANT TO COMPANY INSTRUCTIONS  
SPECIFICATION  
PROJECT NUMBER

OWNERSHIP:  
LINE CODE:  
CABLE CLLI:

SCALE:

SOMERVILLE AVE AT  
CHURCH STREET  
SOMERVILLE, MA

LIST OF DRAWINGS

PT001

## PLANIMETRIC SYMBOL LEGEND

UP ○	UTILITY POLE	○	DECIDUOUS TREE
HYD ○	2-NOZZLE FIRE HYDRANT	✕	STREET LIGHT
✕	WATER GATE	IRHH □	IRRIGATION HANDHOLE
SMH ○	SEWER MANHOLE	EHH □	ELECTRIC HANDHOLE
DMH ○	DRAIN MANHOLE	MAHH □	MASS HIGHWAY HANDHOLE
CB □	CATCH BASIN	SLHH □	STREET LIGHT HANDHOLE
TMH ○	TELEPHONE MANHOLE	PM ●	PARKING METER
VZ MH ○	VERIZON MANHOLE	FA ○	FIRE ALARM
⊗	STONE BOUND W/ DRILL HOLE	EQUT ⊕	ELECTRIC OUTLET
⌒	SIGN	SWTB □	STORMWATER TREATMENT BASIN
■	PROPOSED CONCRETE HANDHOLE	TSCC ⊗	TRAFFIC SIGNAL CONTROL CABINET

## LINETYPE LEGEND

— OHW —	OVERHEAD WIRES
— E —	BURIED ELECTRIC LINE
— T —	BURIED TELEPHONE LINE
— TV —	BURIED CABLE TV LINE
— SAN —	SANITARY SEWER LINE
— SD —	STORM DRAIN LINE
— W —	WATER LINE
— G —	GAS LINE
— — —	PROPERTY LINE
— - - -	RIGHT-OF-WAY LINE
— — —	PROPOSED BURIED CONDUIT

## REFERENCES & NOTES

1. ELECTRIC UTILITY INFORMATION PER RECORD PLANS PROVIDED BY EVERSOURCE.
2. TELECOM UTILITY INFORMATION PER RECORD PLANS PROVIDED BY VERIZON, AT&T, COMCAST & LIGHTTOWER.
3. GAS UTILITY INFORMATION PER RECORD PLANS PROVIDED BY EVERSOURCE.
4. WATER, SEWER & DRAIN UTILITY INFORMATION PER RECORD PLANS PROVIDED BY CITY OF SOMERVILLE.

ISSUE DATE  
1. AUGUST 20, 2020 PERMIT ISSUE

INITIALS  
JCC

**PRELIMINARY**  
**NOT FOR CONSTRUCTION**

NOTES:  
1. SUBSURFACE UTILITY LINES, AS SHOWN HEREON, WERE COMPILED ACCORDING TO AVAILABLE RECORD INFORMATION FROM THE INDUSTRY-RECORDED COMPANIES AND PUBLIC AGENCIES, AND THEIR LOCATIONS ARE APPROXIMATE ONLY. ACTUAL LOCATIONS MUST BE DETERMINED IN THE FIELD PRIOR TO ANY CONSTRUCTION ACTIVITIES. SIENA ENGINEERING GROUP ASSUMES NO RESPONSIBILITY FOR DAMAGES INCURRED AS A RESULT OF UTILITIES OMITTED OR INACCURATELY SHOWN.



Call before you dig.

**AT&T PROPRIETARY**  
(Internal Use Only)

Not for disclosure outside the AT&T companies, except under written agreement.

2020 AT&T Intellectual Property. All Rights Reserved

AT&T PROPRIETARY-This information constitutes confidential trade secrets and commercial or financial information owned by AT&T and is shared for Critical Infrastructure Protection purposes only. It is exempt from disclosure under the Freedom of Information Act (5 U.S.C. 552), Exemptions (b)(3)&(4), and its disclosure is prohibited under the Trade Secrets Act.

(18 U.S.C. 1905), the Critical Infrastructure Information Act of 2002, 6 U.S.C. 133, and any State or local law requiring disclosure of information or records. This information must not be copied or distributed to others not agreed upon by AT&T, but in all events do not copy or distribute to such others without notification pursuant to Executive Order 12800.

PREPARED FOR RECORD  
APPROVED FOR  
OUTSIDE PLANT ENGINEER DATE

**TC SYSTEMS, INC**  
An Affiliate of **AT&T**

**SIENA**  
ENGINEERING GROUP, INC.  
18-14300 Node 15 Somerville Ave. W5.dwg

DRAWN BY: X  
CHECKED BY: X  
APPROVED BY: X

PROPRIETARY  
USE PURSUANT TO COMPANY INSTRUCTIONS  
SPECIFICATION  
PROJECT NUMBER

OWNERSHIP:  
LINE CODE:  
CABLE CLLI:

SCALE:

SOMERVILLE AVE AT  
CHURCH STREET  
SOMERVILLE, MA

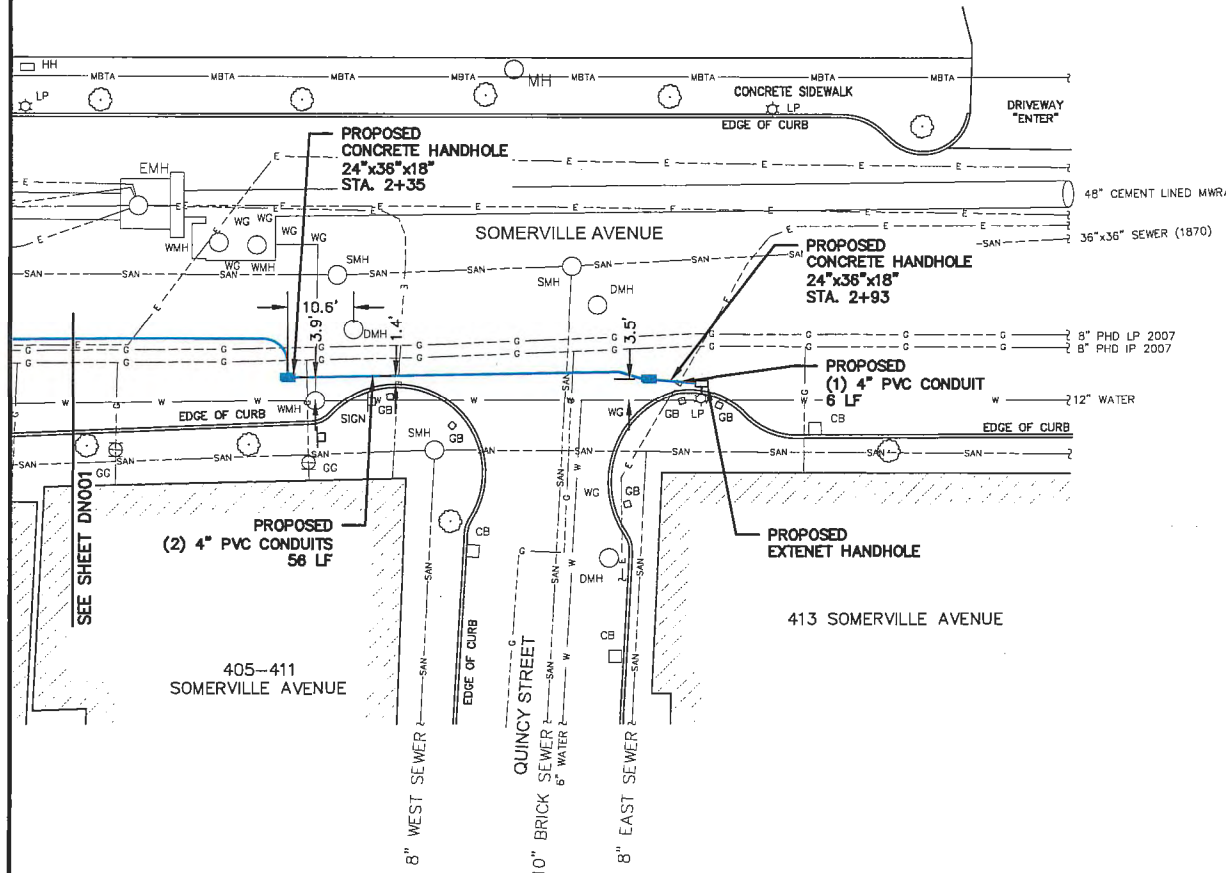
LEGEND & REFERENCES

PT002

# SOMERVILLE MIDDLESEX COUNTY MASSACHUSETTS



MARKET BASKET  
400 SOMERVILLE AVENUE



ISSUE DATE: 1. AUGUST 20, 2020 PERMIT ISSUE INITIALS JOC

**PRELIMINARY  
NOT FOR CONSTRUCTION**

**NOTES:**  
1. SUBSURFACE UTILITY LINES AS SHOWN HEREON, WERE COMPILED ACCORDING TO AVAILABLE RECORD INFORMATION FROM THE REFERENCED COMPANIES AND PUBLIC AGENCIES, AND THEIR LOCATIONS ARE APPROXIMATE ONLY. ACTUAL LOCATIONS MUST BE DETERMINED IN THE FIELD PRIOR TO ANY CONSTRUCTION ACTIVITIES. SIENA ENGINEERING GROUP ASSUMES NO RESPONSIBILITY FOR DAMAGES INCURRED AS A RESULT OF UTILITIES OMITTED OR INACCURATELY SHOWN.



Call before you dig.

**AT&T PROPRIETARY**  
(Internal Use Only)

Not for disclosure outside the AT&T companies, except under written agreement.

2020 AT&T Intellectual Property, All Rights Reserved

AT&T PROPRIETARY-This information constitutes confidential trade secrets and commercial or financial information owned by AT&T and is shared for Critical Infrastructure Protection purposes only. It is exempt from disclosure under the Freedom of Information Act (5 U.S.C. 552, Exemptions (b)(3)(A) and (b)(3)(D)). This information must not be copied or distributed to others not agreed upon by AT&T, but in all events do not copy or distribute to such others without notification pursuant to Executive Order 12800.

PREPARED FOR RECORD  
APPROVED FOR: OUTSIDE PLANT ENGINEER DATE

**TC SYSTEMS, INC**  
An Affiliate of **AT&T**



DRAWN BY: J. CONNOR  
CHECKED BY: D. PUCHALA  
APPROVED BY: B. DORWART, PE

**PROPRIETARY**  
USE PURSUANT TO COMPANY INSTRUCTIONS  
SPECIFICATION  
PROJECT NUMBER

OWNERSHIP  
LINE CODE  
CABLE CLU:

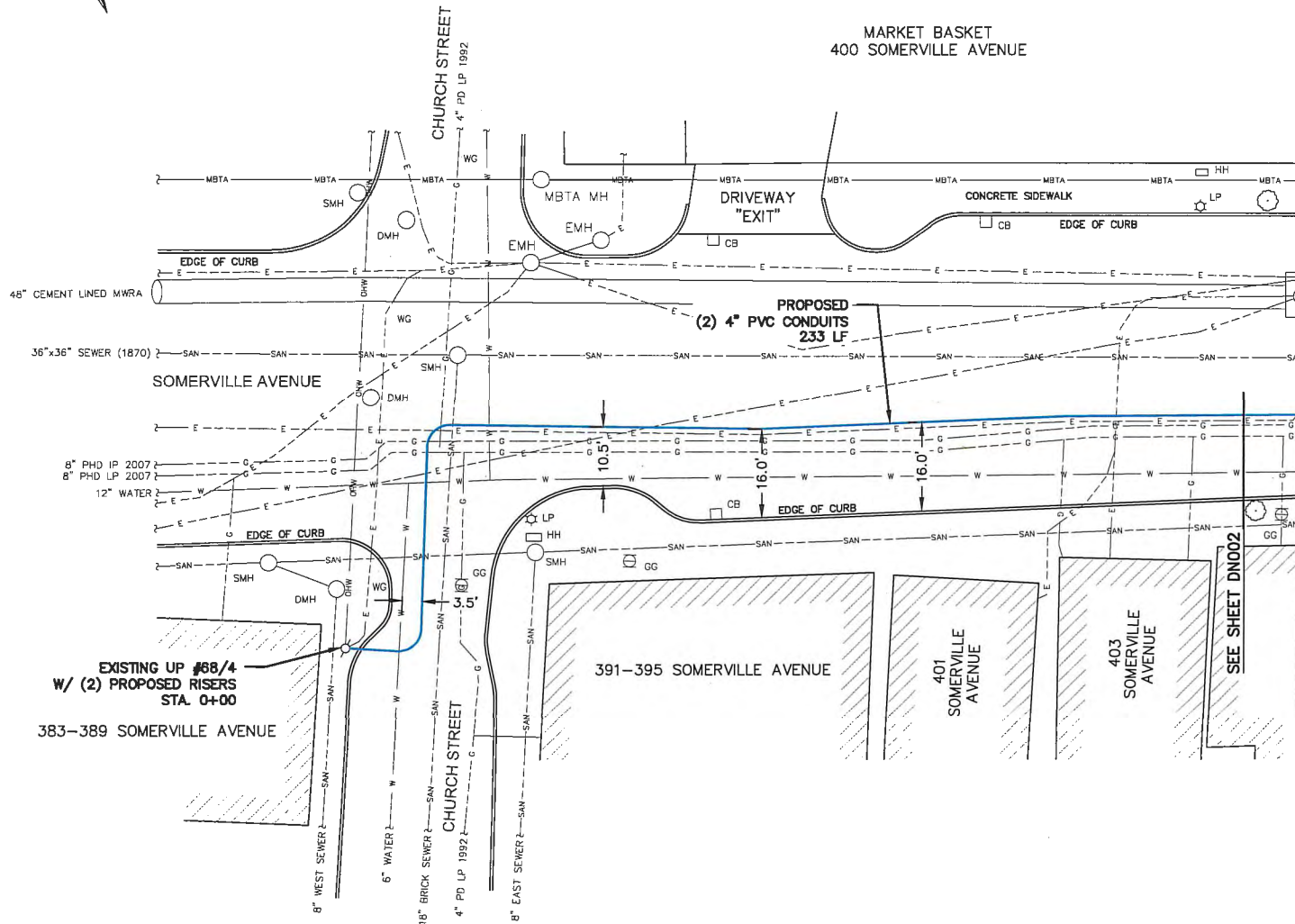
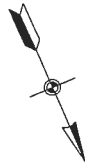
SCALE: 1" = 20'

SOMERVILLE AVE AT  
CHURCH STREET  
SOMERVILLE, MA

PROPOSED CONDUIT  
PLACEMENT PLAN

DN002

**SOMERVILLE  
MIDDLESEX COUNTY  
MASSACHUSETTS**



ISSUE DATE: 1. AUGUST 20, 2020 PERMIT ISSUE INITIALS: JCC

**PRELIMINARY  
NOT FOR CONSTRUCTION**

**NOTES:**  
1. SUBSURFACE UTILITY LINES, AS SHOWN HEREON, WERE COMPILED ACCORDING TO AVAILABLE RECORD INFORMATION FROM THE REFERENCED COMPANIES AND PUBLIC AGENCIES, AND THEIR LOCATIONS ARE APPROXIMATE ONLY. ACTUAL LOCATIONS MUST BE DETERMINED IN THE FIELD PRIOR TO ANY CONSTRUCTION ACTIVITIES. SIENA ENGINEERING GROUP ASSUMES NO RESPONSIBILITY FOR DAMAGES INCURRED AS A RESULT OF UTILITIES OMITTED OR INACCURATELY SHOWN.



**AT&T PROPRIETARY**  
(Internal Use Only)

Not for disclosure outside the AT&T companies, except under written agreement.

2020 AT&T Intellectual Property. All Rights Reserved.

AT&T PROPRIETARY-This information constitutes confidential trade secrets and commercial or financial information owned by AT&T and is shared for Critical Infrastructure Protection purposes only. It is exempt from disclosure under the Freedom of Information Act (5 U.S.C. 552), Exemptions (b)(3)(A)(4), and its disclosure is prohibited under the Trade Secret Act.

(18 U.S.C. 1905), the Critical Infrastructure Information Act of 2002, 6 U.S.C. 135, and any State or local law requiring disclosure of information or records. This information must not be copied or distributed to others not agreed upon by AT&T, but in all events do not copy or distribute to such others without notification pursuant to Executive Order 13526.

**PREPARED FOR RECORD**  
APPROVED FOR: ENGINEER DATE: OUTSIDE PLANT

**TC SYSTEMS, INC**  
An Affiliate of **AT&T**

**SIENA**  
ENGINEERING GROUP, INC.  
187-14300 Nade 15 Somerville Ave MS.dwg  
187-14300 Nade 15 Somerville Ave MS.dwg

DRAWN BY: J. CONNOR  
CHECKED BY: D. PUCHALA  
APPROVED BY: B. DORWART, P.E.

**PROPRIETARY**  
USE PURSUANT TO COMPANY INSTRUCTIONS  
SPECIFICATION  
PROJECT NUMBER

OWNERSHIP  
LINE CODE:  
CABLE CILI:

SCALE: 1" = 20'

SOMERVILLE AVE AT  
CHURCH STREET  
SOMERVILLE, MA

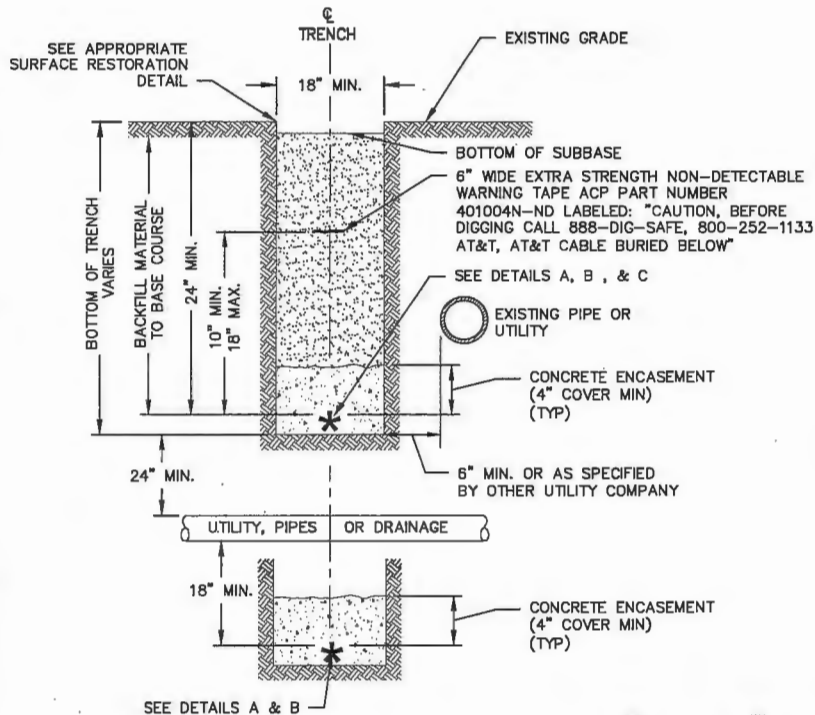
PROPOSED CONDUIT  
PLACEMENT PLAN

DN001

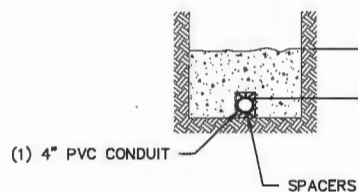
**NOTE:**

DEPTH SHALL VARY BASED UPON ENCOUNTERS WITH EXISTING UTILITIES. CONTRACTOR SHALL MAINTAIN A MINIMUM OF 24" DEPTH OF COVER. IF 24" MINIMUM DEPTH OF COVER CANNOT BE ACHIEVED, CONSULT W/ ENGINEER.

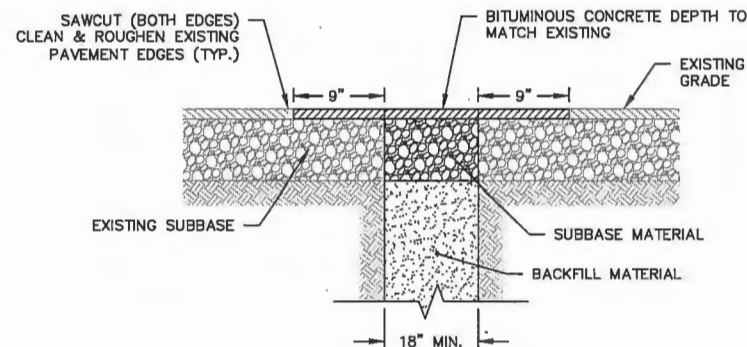
TRENCH WIDTH DIMENSIONS SHOWN FOR CLARITY, ACTUAL WIDTH WILL DEPEND ON FIELD CONDITIONS.



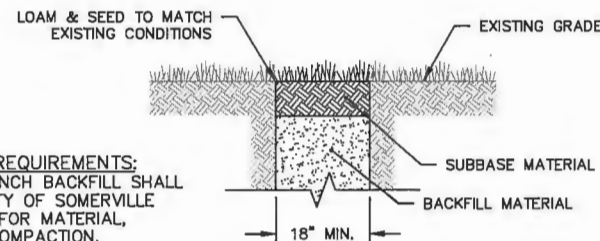
**TYPICAL TRENCH DETAIL**  
NOT TO SCALE



**DETAIL 'A' - 1 CONDUIT**  
NOT TO SCALE

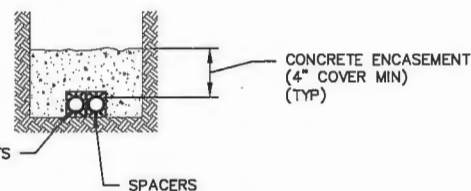


**BITUMINOUS CONCRETE ROADWAY RESTORATION DETAIL**  
NOT TO SCALE



**LOAM/GRASS RESTORATION DETAIL**  
NOT TO SCALE

**RESTORATION REQUIREMENTS:**  
SUBBASE & TRENCH BACKFILL SHALL CONFORM TO CITY OF SOMERVILLE SPECIFICATIONS FOR MATERIAL, PLACEMENT & COMPACTION.



**DETAIL 'B' - 2 CONDUITS**  
NOT TO SCALE

ISSUE DATE: 1, AUGUST 20, 2020 PERMIT REVISION: JCC

**PRELIMINARY**  
NOT FOR CONSTRUCTION

**DISCLAIMER:**  
1. SURFACE UTILITY LINES AS SHOWN HEREON, WERE COMPILED ACCORDING TO AVAILABLE RECORD INFORMATION FROM THE REVEREND COMPANY AND PUBLIC AGENCIES, AND THEIR LOCATIONS ARE APPROXIMATE ONLY. ACTUAL LOCATIONS MUST BE DETERMINED IN THE FIELD PRIOR TO ANY CONSTRUCTION ACTIVITIES. SIENA ENGINEERING GROUP ASSUMES NO RESPONSIBILITY FOR DAMAGES INCURRED AS A RESULT OF UTILITIES OMITTED OR INACCURATELY SHOWN.



**Call before you dig.**

**AT&T PROPRIETARY**  
(Internal Use Only)

Not for disclosure outside the AT&T companies, except under written agreement.

2020 AT&T Intellectual Property. All Rights Reserved

AT&T PROPRIETARY-This information constitutes confidential trade secrets and commercial or financial information owned by AT&T and is shared for Critical Infrastructure Protection purposes only. It is exempt from disclosure under the Freedom of Information Act (5 U.S.C. 552), Exemptions (b)(3)(B)(4), and is disclosure is prohibited under the Trade Secrets Act (18 U.S.C. 1905), the Critical Infrastructure Information Act of 2002, 6 U.S.C. 132, and any State or local law requiring disclosure of information or records. This information must not be copied or distributed to others not agreed upon by AT&T, but in all events do not copy or distribute to such others without notification pursuant to Executive Order 12800.

PREPARED FOR RECORD

APPROVED FOR: OUTSIDE PLANT ENGINEER DATE

**TC SYSTEMS, INC**  
An Affiliate of **AT&T**

**SIENA**  
ENGINEERING GROUP, INC.

DESIGNED BY: J. J. JENNINGS  
CHECKED BY: D. PUCHAL A.  
APPROVED BY: B. DORWART, P.E.

**PROPRIETARY**  
USE RESTRICTED TO COMPANY INSTRUCTIONS  
SPECIFICATION  
PROJECT NUMBER

OWNERSHIP:  
LINE CODE:  
CABLE CLLI:

SCALE: AS NOTED

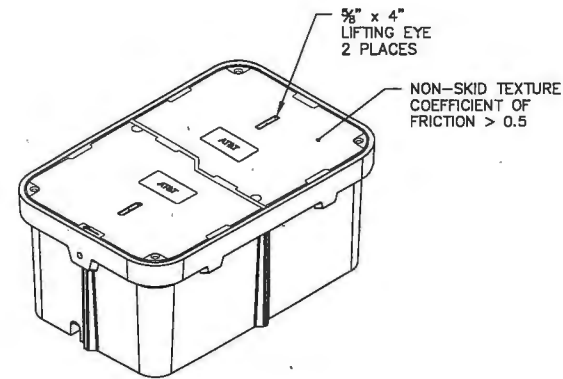
SOMERVILLE AVE AT  
CHURCH STREET  
SOMERVILLE, MA

TYPICAL TRENCH & SURFACE  
RESTORATION DETAILS

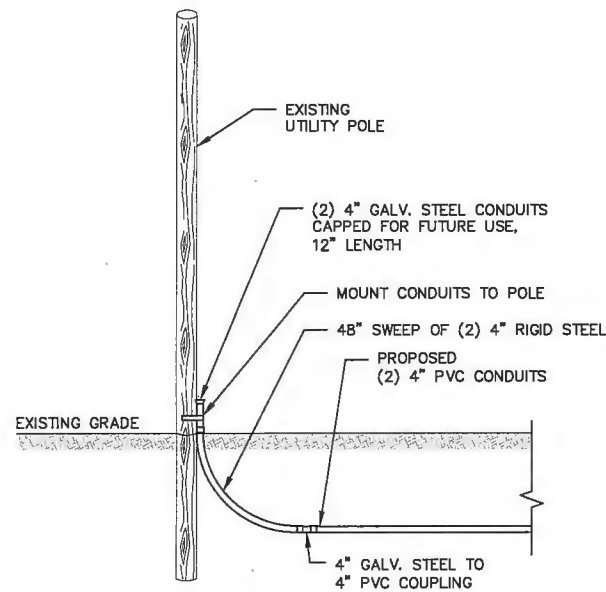
DT001

# NOTES:

1. HANDHOLES INSTALLED IN ACCORDANCE WITH THE LATEST REVISION OF AT&T STANDARD SPECIFICATIONS FOR OUTSIDE PLANT CABLE CONSTRUCTION AND REMOVAL.
2. HANDHOLE SECTIONS PROPERLY ALIGNED AND FREE OF DIRT AND STONES WHEN JOINED.
3. HANDHOLE RACKING CONFORMS WITH AT&T SPECIFICATIONS.
4. SPLICE HANDHOLES INCLUDE AC/DC FILTER PROTECTION PER AT&T SPECIFICATIONS.
5. HANDHOLE MATERIAL IS POLYMER CONCRETE.
6. HANDHOLE MANUFACTURED BY OLDCASTLE ENCLOSURE SOLUTIONS, 801 S. PINE ST., MADERA, CA 96367 1-800-486-7070. UNIT, PC2436-18.



TYPICAL HANDHOLE DETAIL - 24"x36"x18"  
NOT TO SCALE



PROPOSED RISER DETAIL  
NOT TO SCALE

## PRELIMINARY NOT FOR CONSTRUCTION

NOTES:  
1. SURFACE UTILITY LINES AS SHOWN HEREON, WERE COMPILED ACCORDING TO AVAILABLE RECORD INFORMATION FROM THE REFERENCED COMPANIES AND PUBLIC AGENCIES, AND THEIR LOCATIONS ARE APPROXIMATE ONLY. ACTUAL LOCATIONS MUST BE DETERMINED IN THE FIELD PRIOR TO ANY CONSTRUCTION ACTIVITIES. SIENA ENGINEERING GROUP ASSUMES NO RESPONSIBILITY FOR DAMAGES INCURRED AS A RESULT OF UTILITIES OMITTED OR INACCURATELY SHOWN.



Call before you dig.

## AT&T PROPRIETARY (Internal Use Only)

Not for disclosure outside the AT&T companies, except under written agreement.

2020 AT&T Intellectual Property. All Rights Reserved

AT&T PROPRIETARY-This information constitutes confidential trade secrets and commercial or financial information owned by AT&T and is shared for Critical Infrastructure Protection purposes only. It is exempt from disclosure under the Freedom of Information Act (5 U.S.C. 552). Exemptions (b)(3)(A)(4), and its disclosure is prohibited under the Trade Secrets Act.  
(18 U.S.C. 1905), the Critical Infrastructure Information Act of 2002, 5 U.S.C. 133, and any State or local law requiring disclosure of information or records. This information must not be copied or distributed to others not agreed upon by AT&T, but in all events do not copy or distribute to such others without notification pursuant to Executive Order 12800.

## PREPARED FOR RECORD

APPROVED FOR: OUTSIDE PLANT ENGINEER DATE

TC SYSTEMS, INC.  
An Affiliate of AT&T



DRAWN BY: J. CONNOR  
CHECKED BY: D. PUCHALA  
APPROVED BY: B. DORWART, PE

## PROPRIETARY USE PURSUANT TO COMPANY INSTRUCTIONS

SPECIFICATION PROJECT NUMBER

OWNERSHIP:  
LINE CODE:  
CABLE CLLI:

SCALE: AS NOTED

SOMERVILLE AVE AT  
CHURCH STREET  
SOMERVILLE, MA

CONCRETE HANDHOLE  
& RISER POLE DETAILS

DT002

**400 SOMERVILLE AVE  
SOMERVILLE, MA**

Map		Blo		Lot		Stree										Use	
Map	Cut	Bloc	Cut	Lot	Cut	Unit	Alternate	Numbe	Location	Grantee	Co grantee-s Name	Mailing Address	City	St	Zip	Code	Use
3		A		19				411	SOMERVILLE AVE	IBRAHIM IBRAHIM		5 PEPPER HILL DR	WINCHESTER	MA	01890	1050	THRU
3		A		20				415	SOMERVILLE AVE	BAGHDADY SAMIR S		47 WALNUT ST	BELMONT	MA	02478	1050	THRU
3		B		18				391	SOMERVILLE AVE	SOMERVILLE AVENUE TRUST LLC		1 NAOMI DR	GLOUCESTER	MA	01930	0322	STOI
3		B		19				397	SOMERVILLE AVE	VARRICHIONE MARIE A ETAL TRSTE	CATERINO FAMILY TRUST	5 ROSSMORE ST	SOMERVILLE	MA	02143	032R	STOI
3		B		20				401	SOMERVILLE AVE	TROTTA LOUIS G TRUSTEES	TRUST 401-403 SOMERVILLE	643 WOBURN ST	WILMINGTON	MA	01887	032R	STOI
3		B		21				405	SOMERVILLE AVE	TRUST QUINCY-HIGHLAND LOWELL R	ROSEMARY NOLAN TRUSTEE	P O BOX 440361	SOMERVILLE	MA	02144	112C	APT
3		C		35				383	SOMERVILLE AVE	IP PROPERTIES LLC		11 MAPLE TERRACE	BELMONT	MA	02478	0322	STOI
4		A		5			1F 1G	400	SOMERVILLE AVE	DSM MB II LLC		875 EAST ST	TEWKSBURY	MA	08176	3240	SUPP
4		A		1				390	SOMERVILLE AVE	HAYES JOHN P TRUSTEE	J & G REALTY TRUST	16 BUCKMAN DR	WINCHESTER	MA	01890	1050	THRU