

1365

# PLAN OF LAND ON GLEN & TUFTS STREETS

OWNED BY  
**CITY OF SOMERVILLE**

SCALE 1"=40' AUG. 22, 1963

JOHN R. HAVICAN  
COMMISSIONER OF PUBLIC WORKS

Middlesex Registry of Deeds, So. Dist.  
CAMBRIDGE, MASS.

Plan Number 1365 of 19 63

Rec'd SEPT 30 1963 at 11:02 AM

With DEED Doc. No. 114

**CITY OF SOMERVILLE**  
**AM. LEGION SOMERVILLE POST 388 INC**

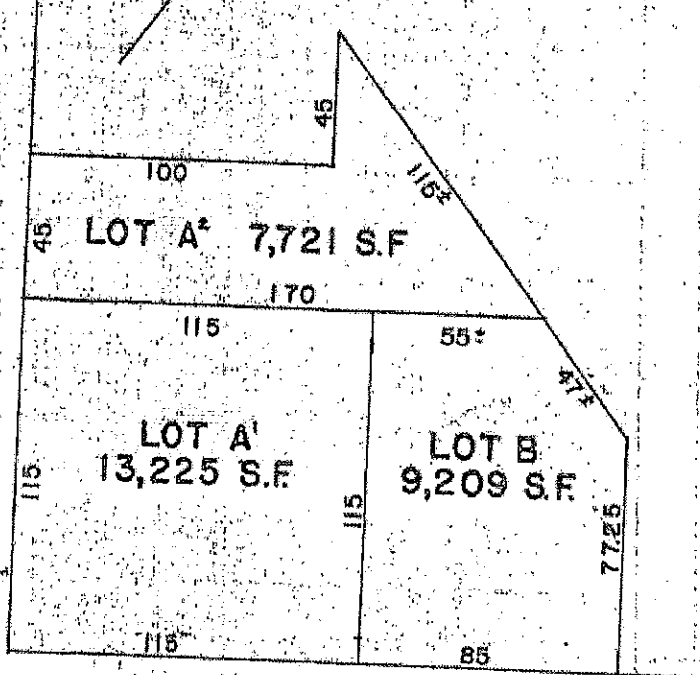
Recorded, Book 10369 Page 177

Attest: \_\_\_\_\_ REGISTER



FEES \$3.00  
BY G

TUFTS STREET



GLEN STREET

145 145