



**CITY OF SOMERVILLE**  
Commonwealth of Massachusetts  
93 Highland Avenue  
Somerville, MA 02143  
(617) 625-6600

## BUSINESS LICENSE APPLICATION - Grant of Location

File #: 22-020294

License #: BL22-000131

Address: 120 MIDDLESEX AVE

Licensee: Kelly-Ann Correia Eversource Energy dba NSTAR Electric Company

DBA Name: NSTAR dba Eversource Energy

Business Ownership Type: Corporation

Legal Name of Entity: NSTAR dba Eversource Energy

Owners/Officers: , , ,

### License Information:

**Grant of location issued to:** NSTAR dba Eversource Energy

**Describe the reason for the work, and the intended beneficiaries:** To provide underground service to #120 Middlesex Avenue.

**Insert here the same detailed description of the work as appears in the attached Grant of Location**

**Order:** Middlesex Avenue - Easterly thence southerly from pole 213/15, approximately 160 feet north of Cummings Street, install approximately 598 feet of conduit and two new manholes, MH31733 and MH31731. Southerly thence westerly from manhole MH31733, to private property at #120 Middlesex Avenue, install approximately 84 feet of conduit. Cummings Street - Southwesterly from Middlesex Avenue, install approximately 231 feet of conduit and one new manhole, MH31732.

Approval Conditions:

### Approved By:

**Isabela Maia, Approved with Conditions**

APPROVAL CONDITION IMM 2022-11-15: Provide a copy of approved MWRA 8(m) Permit as part of the Street Occupancy Permit application to execute the work.

APPROVAL CONDITION IMM 2022-11-15: 12' wide permanent patch centered on trench to be installed following the calendar year after completion

APPROVAL CONDITION IMM 2023-03-27: Any work requiring the use of the street and/or sidewalk will require a Street/Sidewalk Occupancy Permit from the Engineering Department.

**Malik Drayton, Approved with Conditions**

APPROVAL CONDITION: MD20221027: Contractor shall take all necessary precautions to avoid damaging any tree or tree part with equipment.

APPROVAL CONDITION: MD20221027: All nearby street tree(s) shall be protected prior to and during all construction activities using TREE BOX or TREE WRAPS. . TREE BOX shall be constructed from 2 in. x 4 in. lumber creating a box around the border of the tree pit with 2 in. x 4 in. lumber standing straight up at the corners and wrapped with orange snow fence. Detail attached. . TREE WRAPS (TREE TRUNK WRAPPING PROTECTION LUMBER) shall consist of 2 in. x 4 in. and 8 ft. height lumber wired together in close spacing with zip ties or 16 gauge galvanized steel wire to form a protective enclosure around tree trunks. Use burlap to separate the wood from the bark if necessary to prevent wood from scraping or bruising bark. Do not use staples or puncture the trunk in any way.

APPROVAL CONDITION: MD20221027: Any tree roots less than two (2) inches in diameter that cannot be avoided during construction shall be carefully and cleanly cut with a clean pair of pruning shears or loppers. Roots are to be cut back flush with the edge of the trench. If any tree roots greater than two (2) inches in diameter are encountered, stop work immediately and contact the City Urban Forester. Any and all pruning of roots greater than 2 inches in diameter must be completed under the supervision of the City Urban Forester.

**Eric Weisman, Approved**

**Kimberly M. Wells, Approved**



CITY OF SOMERVILLE, MASSACHUSETTS  
CITY CLERK'S OFFICE  
KATJANA BALLANTYNE  
MAYOR

KIMBERLY M. WELLS  
CITY CLERK

August 13, 2024

**NOTICE OF PUBLIC HEARING**

You are hereby notified that the Somerville City Council will hold a Public Hearing on the following Petition. You are receiving this Notice because the Petitioner has reported that you own property that abuts the work that is being proposed. You and other members of the public are invited to attend and be heard at this Hearing.

**This meeting of the City Council will also be conducted via remote participation, online in a webinar hosted on the Zoom platform.**

You have three ways to be heard at this meeting:

1. To attend and be heard, enter the link exactly as it appears below into your internet browser any time before the meeting. You will then be asked to register for the meeting. After registering, you will receive an email with instructions to join the webinar when it starts.
2. You may also testify in person in the City Council Chamber, City Hall, 2<sup>nd</sup> Floor, 93 Highland Avenue, Somerville, MA 02143
3. If you are unable to attend but wish to be heard, you may send written comments by US mail to the City Clerk at the address below, or by email to [cityclerk@somervillema.gov](mailto:cityclerk@somervillema.gov). Your comments must arrive no later than 12 Noon on the day of the Hearing, in order to be sure they are conveyed to the Council.

**PETITION:** Eversource (NStar Electric) is applying for a Grant of Location to install a total of 913 feet of conduit and install three new manholes in Middlesex Avenue and Cummings Street.

**PLACE:** [https://us02web.zoom.us/webinar/register/WN\\_rTQmfy-RQCG\\_QqKLjtYHsA](https://us02web.zoom.us/webinar/register/WN_rTQmfy-RQCG_QqKLjtYHsA)  
or City Council Chambers, City Hall, 2<sup>nd</sup> Floor, 93 Highland Avenue, Somerville, MA 02143

**TIME:** Thursday, August 22, 2024, at 7:00 PM.

**PURPOSE:** The work is necessary to provide service to 120 Middlesex Avenue.

W.O. #9704876

**EVERSOURCE**  
101 Linwood Street  
Somerville, MA 02143

October 21<sup>st</sup>, 2022

Ms. Kimberly Wells  
Office of the City Clerk  
93 Highland Avenue  
Somerville, MA 02143

RE: 120 Middlesex Avenue  
W.O. #8889255

Dear Members of the Board,

The NSTAR Electric Company d/b/a Eversource Energy respectfully requests a Grant of Location for the installation of 682 feet of conduit and two new manholes, MH31733 and MH31731, in Middlesex Avenue and 231 feet of conduit and one new manhole, MH31732, in Cummings Street.

This work is necessary to provide underground service to #120 Middlesex Avenue.

If you have any questions or concerns, please call Jacqueline Duffy at 617-629-3204.

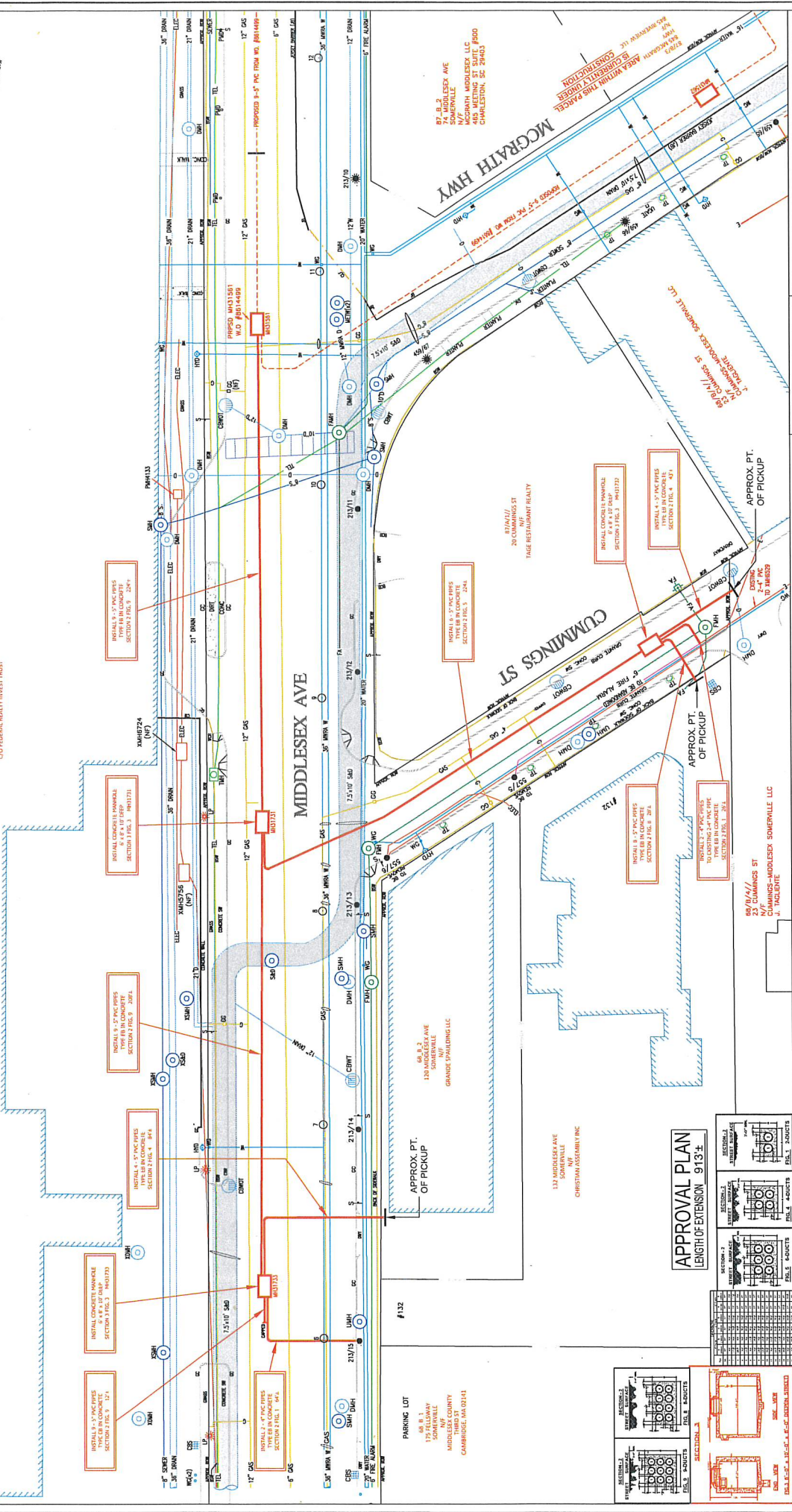
Very truly yours,

*Kelly-Ann Correia*

Kelly-Ann Correia  
Supervisor, Rights and Permits



86/24/17  
133 MIDDLESEX AVE  
FR ASSEMBLY SQUARE LLC  
C/O FEDERAL REALTY INVESTMENT TRUST



**CH 270-22**  
Ward #  
Work Order # 9704976  
Surveyed by: GC/BR  
Researched by: JC  
Plotted by: LM  
Proposed Structures: LM  
Approved: T. THIBAUT  
Date: OCTOBER 5, 2022  
Sheet: 1 of 1

**MASS LAW**  
REQUIRES 72-HOURS ADVANCE NOTICE TO UTILITY COMPANIES BEFORE DIGGING BY ANYONE. CALL DIG-SAFE 1-888-344-7233

**INSTALL 8\"/>**

**APPROVAL PLAN**  
LENGTH OF EXTENSION 913'-4"

SECTION 1	FILE 1 - MANHOLE
SECTION 2	FILE 2 - MANHOLE
SECTION 3	FILE 3 - MANHOLE
SECTION 4	FILE 4 - MANHOLE
SECTION 5	FILE 5 - MANHOLE
SECTION 6	FILE 6 - MANHOLE
SECTION 7	FILE 7 - MANHOLE
SECTION 8	FILE 8 - MANHOLE
SECTION 9	FILE 9 - MANHOLE
SECTION 10	FILE 10 - MANHOLE
SECTION 11	FILE 11 - MANHOLE
SECTION 12	FILE 12 - MANHOLE
SECTION 13	FILE 13 - MANHOLE
SECTION 14	FILE 14 - MANHOLE
SECTION 15	FILE 15 - MANHOLE
SECTION 16	FILE 16 - MANHOLE
SECTION 17	FILE 17 - MANHOLE
SECTION 18	FILE 18 - MANHOLE
SECTION 19	FILE 19 - MANHOLE
SECTION 20	FILE 20 - MANHOLE
SECTION 21	FILE 21 - MANHOLE
SECTION 22	FILE 22 - MANHOLE
SECTION 23	FILE 23 - MANHOLE
SECTION 24	FILE 24 - MANHOLE
SECTION 25	FILE 25 - MANHOLE
SECTION 26	FILE 26 - MANHOLE
SECTION 27	FILE 27 - MANHOLE
SECTION 28	FILE 28 - MANHOLE
SECTION 29	FILE 29 - MANHOLE
SECTION 30	FILE 30 - MANHOLE
SECTION 31	FILE 31 - MANHOLE
SECTION 32	FILE 32 - MANHOLE
SECTION 33	FILE 33 - MANHOLE
SECTION 34	FILE 34 - MANHOLE
SECTION 35	FILE 35 - MANHOLE
SECTION 36	FILE 36 - MANHOLE
SECTION 37	FILE 37 - MANHOLE
SECTION 38	FILE 38 - MANHOLE
SECTION 39	FILE 39 - MANHOLE
SECTION 40	FILE 40 - MANHOLE
SECTION 41	FILE 41 - MANHOLE
SECTION 42	FILE 42 - MANHOLE
SECTION 43	FILE 43 - MANHOLE
SECTION 44	FILE 44 - MANHOLE
SECTION 45	FILE 45 - MANHOLE
SECTION 46	FILE 46 - MANHOLE
SECTION 47	FILE 47 - MANHOLE
SECTION 48	FILE 48 - MANHOLE
SECTION 49	FILE 49 - MANHOLE
SECTION 50	FILE 50 - MANHOLE
SECTION 51	FILE 51 - MANHOLE
SECTION 52	FILE 52 - MANHOLE
SECTION 53	FILE 53 - MANHOLE
SECTION 54	FILE 54 - MANHOLE
SECTION 55	FILE 55 - MANHOLE
SECTION 56	FILE 56 - MANHOLE
SECTION 57	FILE 57 - MANHOLE
SECTION 58	FILE 58 - MANHOLE
SECTION 59	FILE 59 - MANHOLE
SECTION 60	FILE 60 - MANHOLE
SECTION 61	FILE 61 - MANHOLE
SECTION 62	FILE 62 - MANHOLE
SECTION 63	FILE 63 - MANHOLE
SECTION 64	FILE 64 - MANHOLE
SECTION 65	FILE 65 - MANHOLE
SECTION 66	FILE 66 - MANHOLE
SECTION 67	FILE 67 - MANHOLE
SECTION 68	FILE 68 - MANHOLE
SECTION 69	FILE 69 - MANHOLE
SECTION 70	FILE 70 - MANHOLE
SECTION 71	FILE 71 - MANHOLE
SECTION 72	FILE 72 - MANHOLE
SECTION 73	FILE 73 - MANHOLE
SECTION 74	FILE 74 - MANHOLE
SECTION 75	FILE 75 - MANHOLE
SECTION 76	FILE 76 - MANHOLE
SECTION 77	FILE 77 - MANHOLE
SECTION 78	FILE 78 - MANHOLE
SECTION 79	FILE 79 - MANHOLE
SECTION 80	FILE 80 - MANHOLE
SECTION 81	FILE 81 - MANHOLE
SECTION 82	FILE 82 - MANHOLE
SECTION 83	FILE 83 - MANHOLE
SECTION 84	FILE 84 - MANHOLE
SECTION 85	FILE 85 - MANHOLE
SECTION 86	FILE 86 - MANHOLE
SECTION 87	FILE 87 - MANHOLE
SECTION 88	FILE 88 - MANHOLE
SECTION 89	FILE 89 - MANHOLE
SECTION 90	FILE 90 - MANHOLE
SECTION 91	FILE 91 - MANHOLE
SECTION 92	FILE 92 - MANHOLE
SECTION 93	FILE 93 - MANHOLE
SECTION 94	FILE 94 - MANHOLE
SECTION 95	FILE 95 - MANHOLE
SECTION 96	FILE 96 - MANHOLE
SECTION 97	FILE 97 - MANHOLE
SECTION 98	FILE 98 - MANHOLE
SECTION 99	FILE 99 - MANHOLE
SECTION 100	FILE 100 - MANHOLE

SCALE IN FEET

86/24/17  
133 MIDDLESEX AVE  
FR ASSEMBLY SQUARE LLC  
C/O FEDERAL REALTY INVESTMENT TRUST

DWCH ASSEMBLY ROW, LLC  
301 HOWARD ST SUITE 2100  
SAN FRANCISCO, CA 94102

DWCH ASSEMBLY ROW, LLC  
301 HOWARD ST SUITE 2100  
SAN FRANCISCO, CA 94102

FR ASSEMBLY SQUARE LLC  
909 ROSE AVE., SUITE 200  
NORTH BETHESDA, MD 20852 USA

MIDDLESEX COUNTY  
175 FELLSWAY  
SOMERVILLE, MA 02145 USA

S.T TIC LLC, M.M. TIC LLC, J.D.T. TIC LLC  
93 WINGAERSHEEK RD  
GLOUCESTER, MA 01930

STEVEN T., MARIA M., JOSEPH D. T., KRT T.  
93 WINGAERSHEEK ROAD  
GLOUCESTER, MA 01930