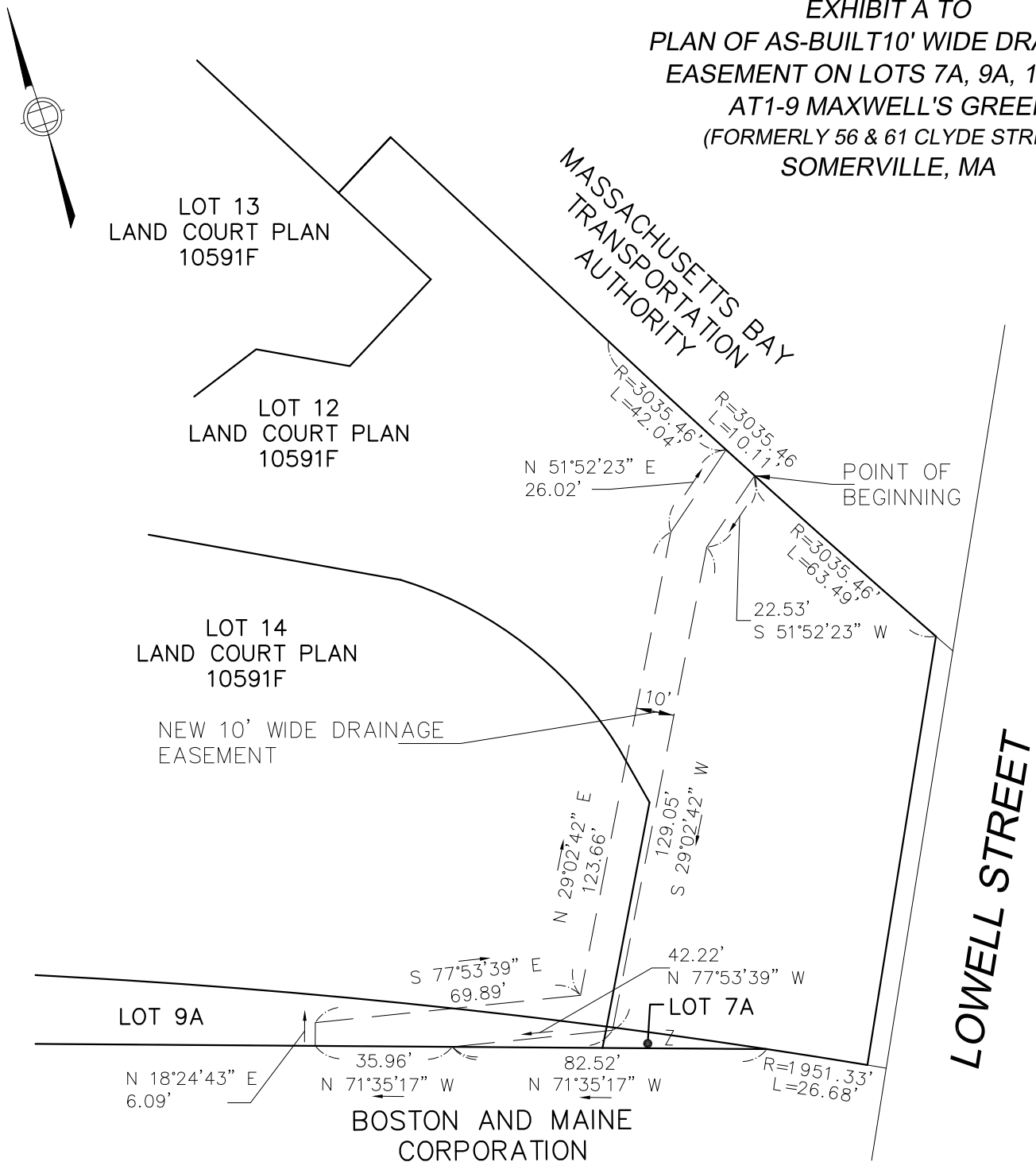


EXHIBIT A TO  
 PLAN OF AS-BUILT 10' WIDE DRAINAGE  
 EASEMENT ON LOTS 7A, 9A, 12 & 14  
 AT 1-9 MAXWELL'S GREEN  
 (FORMERLY 56 & 61 CLYDE STREET)  
 SOMERVILLE, MA



SCALE: 1" = 40'

Design Consultants, Inc.

Consulting Engineers and Surveyors



120 MIDDLESEX AVENUE  
 SOMERVILLE, MA 02145  
 617-776-3350

PLAN OF AS-BUILT 10' WIDE DRAINAGE  
 EASEMENT ON LOTS 7A, 9A, 12 & 14  
 AT 1-9 MAXWELL'S GREEN  
 (FORMERLY 56 & 61 CLYDE STREET)  
 SOMERVILLE, MA

2012-071

OCT. 18, 2013 SH 1 OF 2

**EXHIBIT A TO  
PLAN OF AS-BUILT 10' WIDE DRAINAGE  
EASEMENT ON LOTS 7A, 9A, 12 & 14  
AT 1-9 MAXWELL'S GREEN  
(FORMERLY 56 & 61 CLYDE STREET)  
SOMERVILLE, MA**

**NOTE**

1. THE PURPOSE OF THIS PLAN OF AS-BUILT TEN FOOT WIDE DRAINAGE EASEMENT AT 1 THROUGH 9 MAXWELL'S GREEN (FORMERLY 56 AND 61 CLYDE STREET), SOMERVILLE, MA, IS TO DEPICT AND SHOW THE LOCATION OF THE AS BUILT, INSTALLED DRAIN PIPE, AND THE NEW LOCUS OF THE SPECIFIC TEN FOOT (10') WIDE DRAINAGE EASEMENT BEING CONVEYED BY VIF II/MAXPAC SQUARE OWNER, LLC TO THE CITY OF SOMERVILLE, MA (THE "CITY"), AND TO THE MASSACHUSETTS BAY TRANSPORTATION AUTHORITY (THE "MBTA"), AS THE SUBSTITUTE LOCATION AND EASEMENT FOR A PREVIOUS DRAINAGE AND CULVERT EASEMENT, SHOWN ON L. C. PLAN 10591-A, WHICH BENEFITTED THE CITY AND THE MBTA.
2. THE LOCATION AND MEASUREMENTS OF THE NEW EASEMENT'S LOCUS WERE DETERMINED BY AN ON THE GROUND INSTRUMENT SURVEY CONDUCTED, AT THE PREMISES, BY DESIGN CONSULTANT, INC, ON JUNE 17, 2011.
3. THE AS-BUILT TEN FOOT WIDE EASEMENT, AS IT IS SHOWN HEREON, FORM A MATHEMATICALLY CLOSED FIGURE.
4. REGISTERED PARCELS LOTS 12, 13 AND 14 ARE AS DESCRIBED AND PLOTTED ON LAND COURT PLAN 10591-F. THE RECORDED LAND LOTS 7A AND 9A ARE AS DESCRIBED AND PLOTTED ON "PLAN OF LAND IN SOMERVILLE, MASS., SURVEYED FOR II/MAXPAC JV LLC," DATED MAY 12, 2011, PREPARED BY DESIGN CONSULTANTS, INC. OF SOMERVILLE, MA, RECORDED WITH THE MIDDLESEX SOUTH REGISTRY OF DEEDS AS PLAN NO. 441 OF 2011.

---

EVERETT J. CHANDLER, P.L.S. MASS. REGISTRATION NO. 41783

SCALE: 1" = 40'

**Design Consultants, Inc.**

Consulting Engineers and Surveyors



120 MIDDLESEX AVENUE  
SOMERVILLE, MA 02145  
617-776-3350

**PLAN OF AS-BUILT 10' WIDE DRAINAGE  
EASEMENT ON LOTS 7A, 9A, 12 & 14  
AT 1-9 MAXWELL'S GREEN  
(FORMERLY 56 & 61 CLYDE STREET)  
SOMERVILLE, MA**

2012-071

OCT. 18, 2013 SH 1 OF 2