



CITY OF SOMERVILLE

Commonwealth of Massachusetts

93 Highland Avenue

Somerville, MA 02143

(617) 625-6600

BUSINESS LICENSE APPLICATION - Sign and Awning

File #: 22-014498

License #: BL22-000097

Address: 501 Assembly Row

Licensee: Ron Ferrigno Sign Design

DBA Name: Athleta

Business Ownership Type: LLC

Legal Name of Entity: Athleta

Owners/Officers: , , ,

License Information:

of signs/awnings: 3 or more

Describe: Replace 2 awnings currently on the building same size, just black instead of navy blue.

Approval Conditions:

Approved By:

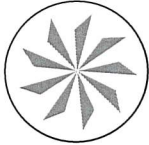
City Treasurer, Approved

Albert Bargoote, Approved

Hans Jensen, Approved

Kimberly M. Wells, Approved

PREPARED ESPECIALLY FOR

 ATHLETA

SITE 1652
501 Assembly Row
Space 408
Somerville, MA 02145

YOUR PARTNER IN BUILDING AN **OUTSTANDING** IMAGE

image national sign 
...bringing your image to light!



 **SITE MAP/AERIAL VIEW**
SCALE: N.T.S.

DESIGN SIGN STATUS - MAIN ID WALL SIGNS			
SIGN #	LOCATION	SIGN TYPE	TECHNICALLY VERIFIED
1	WEST ELEVATION	CHANNEL LETTERS - ILLUMINATED REMOTE	X
2	WEST ELEVATION	D/F ILLUMINATED BLADE SIGN	X
4	SOUTH ELEVATION	CHANNEL LETTERS - ILLUMINATED REMOTE	X
5	SOUTH ELEVATION	D/F ILLUMINATED BLADE SIGN	X

DESIGN SIGN STATUS - VINYL AND BANNERS DO NOT SHOW THESE ON SITE MAP			
3	WEST ELEVATION	WINDOW ADDRESS VINYL	X

DRAWING TYPE




CONCEPTUAL

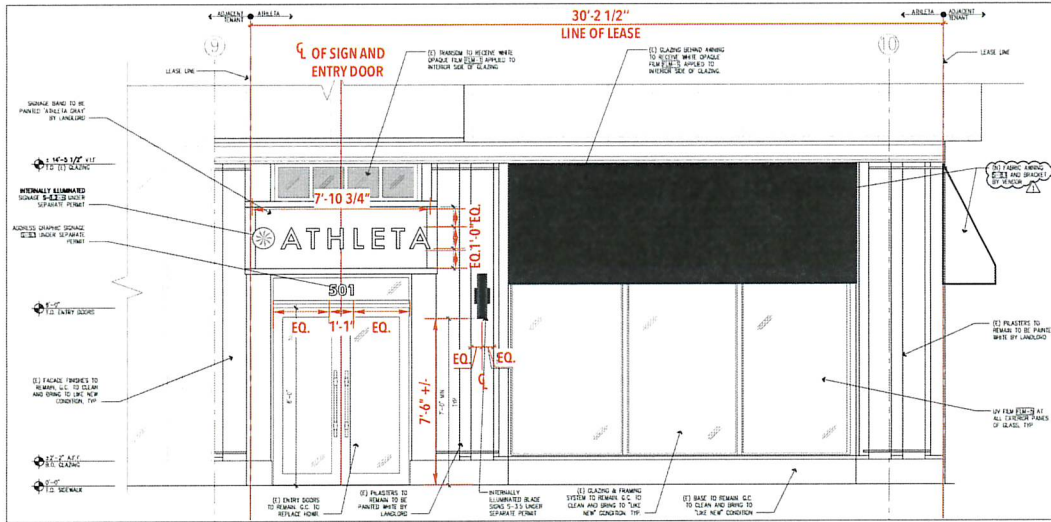
TECHNICAL

REVISIONS

- 1) Removed awning and put them on a separate drawing.
- 2) _____
- 3) _____
- 4) _____

It is the intent and purpose of this color rendering to provide a basic color representation of your sign finish and color. However, digital media and printed colors will vary from actual paint finish and color. Existing painted surfaces will have a perceptible difference in shade and sheen from your sign finish. Providing a sample of the paint you wish to match or a Matthews paint color formula will minimize the differences.

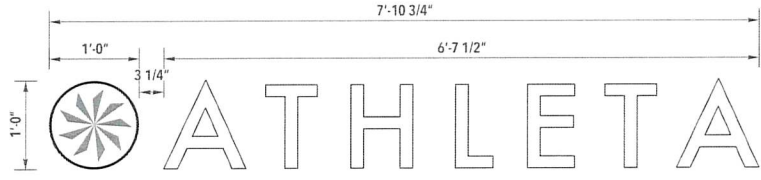
 ...bringing your image to light! 16265 Star Rd., Nampa, ID 83687 - toll free: 800.592.8058 - tele: 208.345.4020 imagenational.com	 NAMPALANT - UL #433195-001	Client: Athleta	Design Number: FB-0595-22	File Location: ATH-1652-Somerville, MA-062022-R1	Page No.
		Site: 1652 501 Assembly Row Space 408 Somerville, MA 02145	Date: 06/20/22 Designer: Dave J Account Manager: Sebastian Rodriguez		2 of 8



WEST ELEVATION
 SCALE: 3/16" = 1'-0"
 EXISTING SQ. FT.:
 ALLOWED SQ. FT.:
 PROPOSED SQ. FT.: 12.39



SIMULATED NIGHT VIEW
 SCALE: N.T.S.



1 ILLUMINATED CHANNEL LETTERS REMOTE - EXTERIOR
 SCALE: 3/4" = 1'-0" AREA: 7.89 SQ. FT.

GENERAL NOTES

ADDRESS - FONT - SIZE - COLOR, TO BE CONFIRMED BY ATHLETA/LL PRIOR TO MANUFACTURE. FONT IS FUTURA MD BT BOLD.

CITY CODE & ALLOWANCES

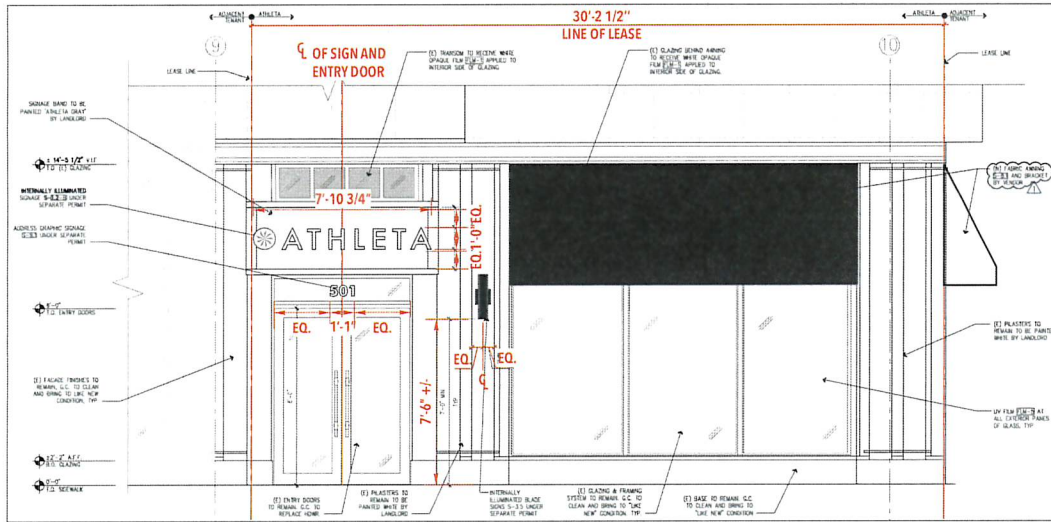
Empty box for City Code & Allowances.



3 TYPICAL ADDRESS NUMERALS AREA: 0.5 SQ. FT.
 SCALE: 1" = 1'-0"

It is the intent and purpose of this color rendering to provide a basic color representation of your sign finish and color. However, digital media and printed colors will vary from actual paint finish and color. Existing painted surfaces will have a perceptible difference in shade and sheen from your sign finish. Providing a sample of the paint you wish to match or a Matthews paint color formula will minimize the differences.

<p>image national signs ...bringing your image to light! 16265 Star Rd., Nampa, ID 83687 - toll free: 800.592.8058 - tele: 208.345.4020 imagenational.com</p>	<p>NAMPA PLANT - UL #433195-001</p> <p>U.S. & P.R. - All signs conform to UL-48/2161 (labeled accordingly) & must comply with UL-41.1 install procedures. Canada - all signs must be CAS compliant. This sign(s) is intended to be installed in accordance with requirements of article 600 of the National Electrical Code and/or applicable local codes. This includes proper grounding and bonding of the sign.</p>	Client: Athleta Site: 1652 501 Assembly Row Space 408 Somerville, MA 02145	Design Number: FB-0595-22 Date: 06/20/22 Designer: Dave J Account Manager: Sebastian Rodriguez	File Location: ATH-1652-Somerville, MA-062022-R1 	Page No. 3 of 8
--	--	--	---	---	---------------------------



WEST ELEVATION

SCALE: 3/16" = 1'-0"

EXISTING SQ. FT.:

ALLOWED SQ. FT.:

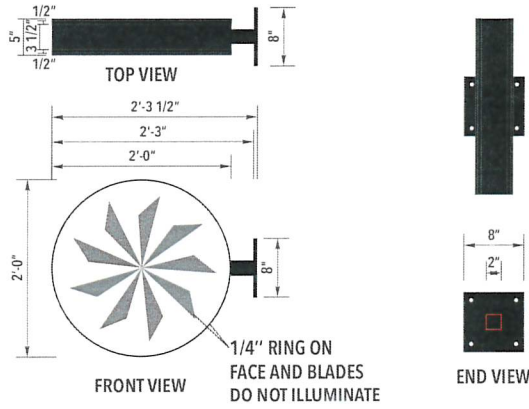
PROPOSED SQ. FT.: 12.39



SIMULATED NIGHT VIEW

SCALE: N.T.S.




It is the intent and purpose of this color rendering to provide a basic color representation of your sign finish and color. However, digital media and printed colors will vary from actual paint finish and color. Existing painted surfaces will have a perceptible difference in shade and sheen from your sign finish. Providing a sample of the paint you wish to match or a Matthews paint color formula will minimize the differences.

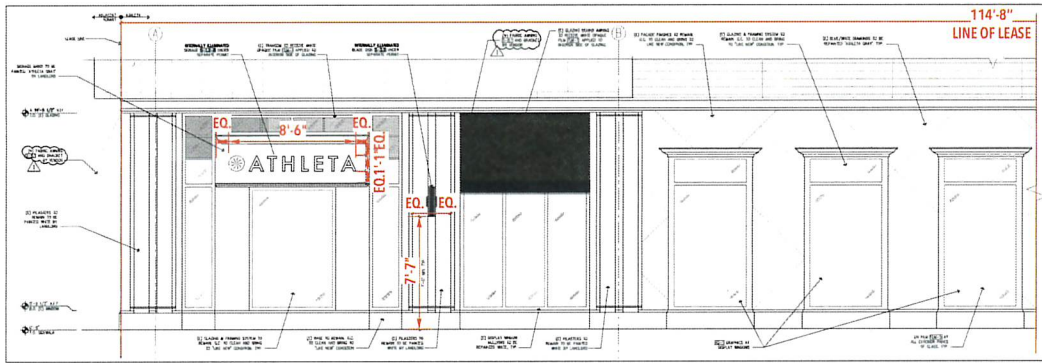


2 NEW D/F ILLUMINATED BLADE SIGN AREA: 4.0 SQ. FT.
SCALE: 3/4" = 1'-0"

GENERAL NOTES

CITY CODE & ALLOWANCES

<p>image national signs </p> <p>...bringing your image to light!</p> <p>16265 Star Rd., Nampa, ID 83687 - toll free: 800.592.8058 - tele: 208.345.4020 imagenational.com</p>	<p> NAMPA PLANT - UL #433195-001</p> <p>U.S. & P.R. - All signs conform to UL-48/2161 (labeled accordingly) & must comply with UL-41.1 install procedures. Canada - all signs must be CAS compliant. This sign(s) is intended to be installed in accordance with requirements of article 600 of the National Electrical Code and/or applicable local codes. This includes proper grounding and bonding of the sign.</p>	<p>Client: Athleta</p>	<p>Design Number: FB-0595-22</p>	<p>File Location: ATH-1652-Somerville, MA-062022-R1</p>	<p>Page No.</p>
		<p>Site: 1652 501 Assembly Row Space 408 Somerville, MA 02145</p>	<p>Date: 06/20/22</p> <p>Designer: Dave J</p> <p>Account Manager: Sebastian Rodriguez</p>	<p></p>	<p>4 of 8</p>



SOUTH ELEVATION

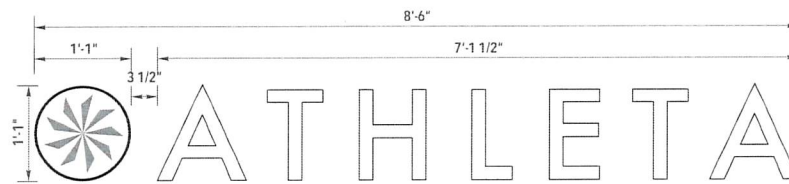
SCALE: 1/8" = 1'-0"

EXISTING SQ. FT.:
 ALLOWED SQ. FT.:
 PROPOSED SQ. FT.: 13.2

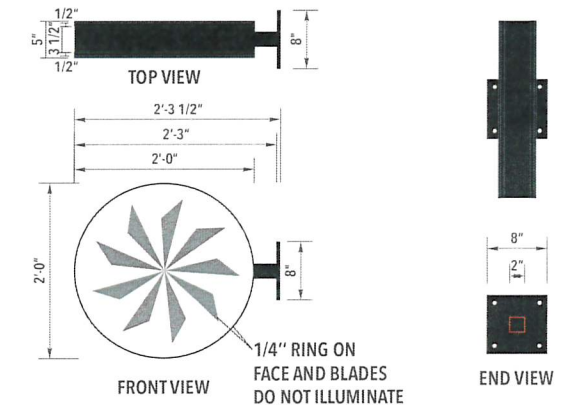


SIMULATED NIGHT VIEW

SCALE: N.T.S.



4 ILLUMINATED CHANNEL LETTERS REMOTE - EXTERIOR AREA: 9.2 SQ. FT.
 SCALE: 3/4" = 1'-0"



5 NEW D/F ILLUMINATED BLADE SIGN AREA: 4.0 SQ. FT.
 SCALE: 3/4" = 1'-0"

GENERAL NOTES

CITY CODE & ALLOWANCES

image national signs **in**
 ...bringing your image to light!
 16265 Star Rd., Nampa, ID 83687 - toll free: 800.592.8058 - tele: 208.345.4020
 imagenational.com

UL UNDERWRITERS LABORATORIES
 NAMPALANT - UL #433195-001
 U.S. & PR - All signs conform to UL-48/2161 (labeled accordingly) & must comply with UL-41.1 install procedures. Canada - all signs must be CAS compliant. This sign(s) is intended to be installed in accordance with requirements of article 600 of the National Electrical Code and/or applicable local codes. This includes proper grounding and bonding of the sign.

Client: Athleta
Site: 1652
 501 Assembly Row
 Space 408
 Somerville, MA 02145

Design Number: FB-0595-22

Date: 06/20/22

Designer: Dave J

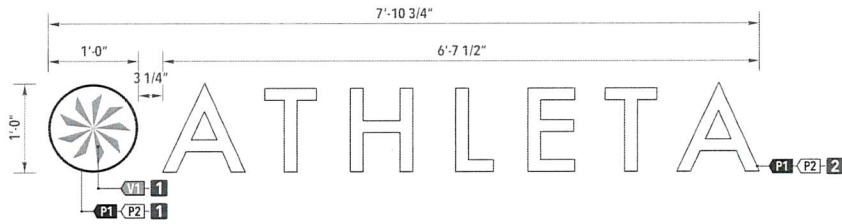
Account Manager: Sebastian Rodriguez

File Location: ATH-1652-Somerville, MA-062022-R1



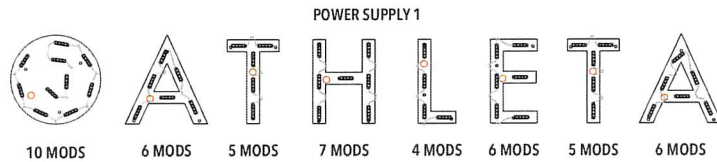
Page No.

5 of 8



1 ILLUMINATED CHANNEL LETTERS REMOTE - EXTERIOR

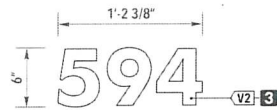
SCALE: 3/4" = 1'-0"



LED LAYOUT

SCALE: 3/4" = 1'-0"

TOTAL: 49 MODS



3 TYPICAL ADDRESS NUMERALS

SCALE: 1" = 1'-0"

FABRICATION SPECIFICATIONS

1 CHANNEL WRAP	LIGHTING	GE LED 7100K WHITE
	FACE COLOR	WHITE ACRYLIC #7328
	VINYL COLOR	PER COLOR KEY (V1)
	RETURNS	LETTER EDGE COIL
	RETURN COLOR	PER COLOR KEY (P1)(P2)
	RETURN DEPTH	3"
2 CHANNEL LETTER	LIGHTING	GE LED 7100K WHITE
	FACE COLOR	WHITE ACRYLIC #7328
	RETURNS	LETTER EDGE COIL
	RETURN COLOR	PER COLOR KEY (P1)(P2)
	RETURN DEPTH	3"
	BACKS	13MM SINTRA (REMOVABLE)
3 VINYL COPY	LAYER	1ST SURFACE
	FACE COLOR	PER COLOR KEY (V2)

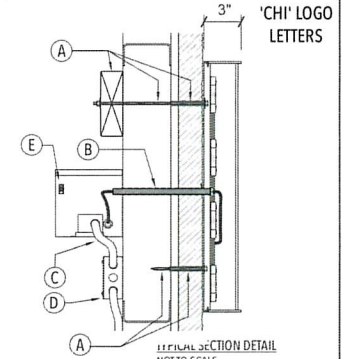
GENERAL NOTES

ALL U.L. / MANUFACTURE LABELS MUST BE PLACED OUT OF VIEW.
ALL SIGNAGE ATTACHMENTS, DISCONNECT SWITCHES, ETC. SHOULD BE LOCATED SO THEY ARE NOT VISIBLE TO THE CUSTOMER.

COLOR KEY

P1 PAINT	MP 923SP BLACK (MATTE FINISH) (OUTSIDE)
P2 PAINT	MP 202SP WHITE (SATIN FINISH) (INSIDE)
V1 VINYL	DIGITAL PRINT TO MATCH PANTONE 430 TRAFFIC GREY
V2 VINYL	3M 7725-10 OPAQUE WHITE

NOTE: THE COLORS DEPICTED ON THIS RENDERING REPRESENT COLOR INTENT ONLY AND MAY NOT MATCH ACTUAL COLORS ON FINISHED PRODUCT. PLEASE REFER TO COLOR CALL-OUTS AND SPECIFIED VENDOR SAMPLES FOR APPROVED COLOR SPECIFICATIONS.



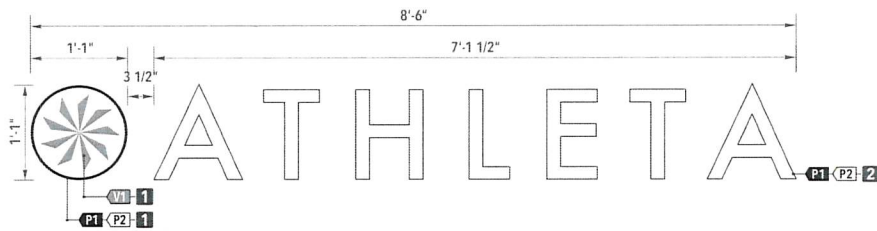
- A. Non-Corrosive Securement - Threaded Rod, Lag bolt or Lag & Shield (or appropriate mounting hardware) - Note: Blocking as Required per Installation Condition
 - B. 1/2" Passthru (Wall Penetration)
 - C. 1/2" Flexible Conduit Whip to 120v Power (by others)
 - D. 20 amp 120v Circuits Required (supplied by others)
 - E. Disconnect Switch Required at Transformer Box (Supplied by Image National-Install by Installer)
- DRAIN HOLE AND BAFFLE COVER IF EXTERIOR**

APPROVED FASTENER SCHEDULE

	3/8" - 1/2" LAG SCREW	FOR USE WITH WOOD OR EIFS WALL SYSTEMS. 1 1/2" MIN PENETRATION (EXCLUDING TIP)
	1/4" - 3/8" THREADED ROD	FOR USE WITH WOOD, CONCRETE BLOCK OR EIFS WALL SYSTEMS
	3/8" RED HEAD L.D.T. (LARGE DIAMETER BRICK)	FOR USE WITH CONCRETE BLOCK, BRICK OR CONCRETE. EMBED A MIN. OF 2 1/2"
	3/8" DIA. HELIX HIT ROD WITH HY150 MAX ADHESIVE	FOR USE WITH CONCRETE. EMBED A MIN. OF 2"
	3/8" DIA. HELIX HIT ROD WITH HY20 ADHESIVE	FOR USE WITH MASONRY AND BRICK. EMBED A MIN. OF 3 3/8"
	3/8" DIA. HELIX HIT ROD WITH HY20 ADHESIVE	FOR USE WITH CONCRETE BLOCK. EMBED A MIN. OF 2"
	3/8" DIA. HELIX SLEEVE ANCHOR	FOR USE WITH CONCRETE, MASONRY AND BRICK. EMBED A MIN. OF 3 3/8"
	3/8" DIA. LAG WITH 3/8" SHIELD & WASHER	FOR USE WITH CONCRETE, MASONRY AND BRICK - EMBED A MIN. OF 2"
	#10 (3") HEX SCREW WITH FENDER WASHER INTO PLASTIC WALL ANCHOR	USE WITH CONCRETE, MASONRY & BRICK. FOR USE WITH SMALL LIGHTWEIGHT LETTERS & CABINETS

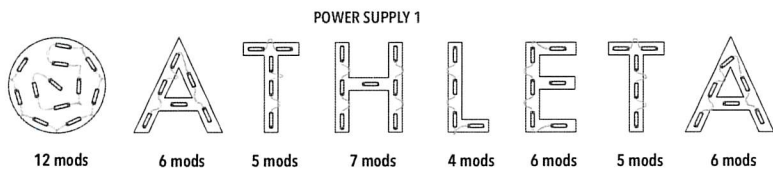
It is the intent and purpose of this color rendering to provide a basic color representation of your sign finish and color. However, digital media and printed colors will vary from actual paint finish and color. Existing painted surfaces will have a perceptible difference in shade and sheen from your sign finish. Providing a sample of the paint you wish to match or a Matthews paint color formula will minimize the differences.

<p>image national signs ...bringing your image to light!</p> <p>16265 Star Rd., Nampa, ID 83687 - toll free: 800.592.8058 - tele: 208.345.4020 imagenational.com</p>	<p>NAMPA PLANT - UL #433195-001</p> <p>U.S. & P.R. - All signs conform to UL-48/2161 (labeled accordingly) & must comply with UL-41.1 install procedures. Canada - all signs must be CAS compliant. This sign(s) is intended to be installed in accordance with requirements of article 600 of the National Electrical Code and/or applicable local codes. This includes proper grounding and bonding of the sign.</p>	<p>Client: Athleta</p>	<p>Design Number: FB-0595-22</p>	<p>File Location: ATH-1652-Somerville, MA-062022-R1</p>	<p>Page No.</p>
		<p>Site: 1652 501 Assembly Row Space 408 Somerville, MA 02145</p>	<p>Date: 06/20/22</p> <p>Designer: Dave J</p> <p>Account Manager: Sebastian Rodriguez</p>		<p>6 of 8</p>



4 ILLUMINATED CHANNEL LETTERS REMOTE - EXTERIOR

SCALE: 3/4" = 1'-0"



LED LAYOUT

SCALE: 3/4" = 1'-0"

TOTAL: 51 MODS

FABRICATION SPECIFICATIONS

1 CHANNEL WRAP	LIGHTING	GE LED 7100K WHITE
	FACE COLOR	WHITE ACRYLIC #7328
	VINYL COLOR	PER COLOR KEY (V1)
	RETURNS	LETTER EDGE COIL
	RETURN COLOR	PER COLOR KEY (P1)(P2)
	RETURN DEPTH	3"
	BACKS	13MM SINTRA (REMOVABLE)
	ELECTRICAL	20amp/120V
	NOTE	POWER SUPPLY BEHIND WALL WITHIN 5' OF CENTER OF SIGN
2 CHANNEL LETTER	LIGHTING	GE LED 7100K WHITE
	FACE COLOR	WHITE ACRYLIC #7328
	RETURNS	LETTER EDGE COIL
	RETURN COLOR	PER COLOR KEY (P1)(P2)
	RETURN DEPTH	3"
	BACKS	13MM SINTRA (REMOVABLE)
	ELECTRICAL	20amp/120V
	NOTE	POWER SUPPLY BEHIND WALL WITHIN 5' OF CENTER OF SIGN

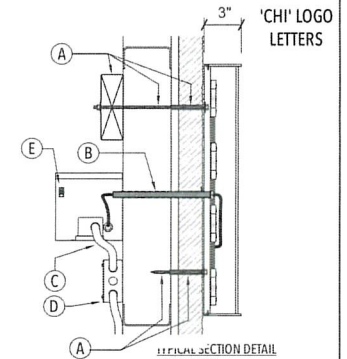
GENERAL NOTES

ALL U.L. / MANUFACTURE LABELS MUST BE PLACED OUT OF VIEW.
ALL SIGNAGE ATTACHMENTS, DISCONNECT SWITCHES, ETC. SHOULD BE LOCATED SO THEY ARE NOT VISIBLE TO THE CUSTOMER.

COLOR KEY

P1	PAINT	MP 923SP BLACK (MATTE FINISH) (OUTSIDE)
P2	PAINT	MP 202SP WHITE (SATIN FINISH) (INSIDE)
V1	VINYL	DIGITAL PRINT TO MATCH PANTONE 430 TRAFFIC GREY

NOTE: THE COLORS DEPICTED ON THIS RENDERING REPRESENT COLOR INTENT ONLY AND MAY NOT MATCH ACTUAL COLORS ON FINISHED PRODUCT. PLEASE REFER TO COLOR CALL-OUTS AND SPECIFIED VENDOR SAMPLES FOR APPROVED COLOR SPECIFICATIONS.



- A. Non-Corrosive Securement - Threaded Rod, Lag bolt or Lag & Shield (or appropriate mounting hardware) - Note: Blocking as Required per Installation Condition
- B. 1/2" Passthru (Wall Penetration)
- C. 1/2" Flexible Conduit Whip to 120v Power (by others)
- D. 20 amp 120v Circuits Required (supplied by others)
- E. Disconnect Switch Required at Transformer Box (Supplied by Image National-Install by Installer)

DRAIN HOLE AND BAFFLE COVER IF EXTERIOR

APPROVED FASTENER SCHEDULE

	3/8" - 1/2" LAG SCREW	FOR USE WITH WOOD OR EIFS WALL SYSTEMS. 1 1/2" MIN PENETRATION (EXCLUDING TIP)
	1/4" - 3/8" THREADED ROD	FOR USE WITH WOOD, CONCRETE BLOCK OR EIFS WALL SYSTEMS
	3/8" RED HEAD L.D.I. (LARGE DIAMETER SIKCON)	FOR USE WITH CONCRETE BLOCK, BRICK OR CONCRETE. EMBED A MIN. OF 2 1/2".
	3/8" DIA. HILTI HIT ROD WITH HY20 MAX ADHESIVE	FOR USE WITH CONCRETE. EMBED A MIN. OF 2"
	3/8" DIA. HILTI HIT ROD WITH HY20 ADHESIVE	FOR USE WITH MASONRY AND BRICK. EMBED A MIN. OF 3 3/8"
	3/8" DIA. HILTI HIT ROD WITH HY20 ADHESIVE	FOR USE WITH CONCRETE BLOCK. EMBED A MIN. OF 2"
	3/8" DIA. HILTI HCL SLEEVE ANCHOR	FOR USE WITH CONCRETE, MASONRY AND BRICK. EMBED A MIN. OF 3 3/8"
	3/8" DIA. LAG WITH 3/8" SHIELD & WASHER	FOR USE WITH CONCRETE, MASONRY AND BRICK - EMBED A MIN. OF 2"
	#10 (#7) HEX SCREW W/ FENDER WASHER INTO PLASTIC WALL ANCHOR	USE WITH CONCRETE, MASONRY & BRICK. FOR USE WITH SMALL LIGHTWEIGHT LETTERS & CABINETS

It is the intent and purpose of this color rendering to provide a basic color representation of your sign finish and color. However, digital media and printed colors will vary from actual paint finish and color. Existing painted surfaces will have a perceptible difference in shade and sheen from your sign finish. Providing a sample of the paint you wish to match or a Matthews paint color formula will minimize the differences.

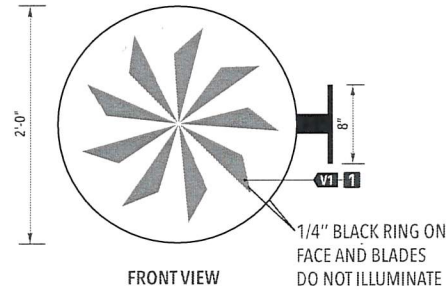
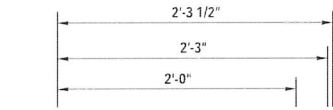
<p>...bringing your image to light!</p> <p>16265 Star Rd., Nampa, ID 83687 - toll free: 800.592.8058 - tele: 208.345.4020 imagenational.com</p>	<p>NAMPA PLANT - UL #433195-001</p> <p>U.S. & P.R. - All signs conform to UL-48/2161 (labeled accordingly) & must comply with UL-41.1 install procedures. Canada - all signs must be CAS compliant. This sign(s) is intended to be installed in accordance with requirements of article 600 of the National Electrical Code and/or applicable local codes. This includes proper grounding and bonding of the sign.</p>	<p>Client: Athleta</p>	<p>Design Number: FB-0595-22</p>	<p>File Location: ATH-1652-Somerville, MA-062022-R1</p>	<p>Page No.</p>
		<p>Site: 1652 501 Assembly Row Space 408 Somerville, MA 02145</p>	<p>Date: 06/20/22</p> <p>Designer: Dave J</p> <p>Account Manager: Sebastian Rodriguez</p>		<p>7 of 8</p>



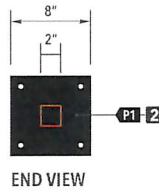
TOP VIEW



P1 1



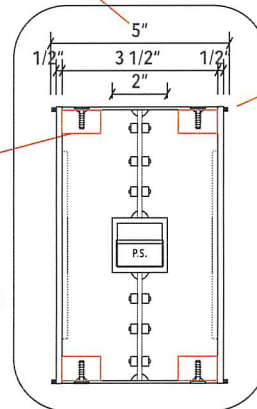
1/4" BLACK RING ON FACE AND BLADES DO NOT ILLUMINATE



END VIEW

P1 2

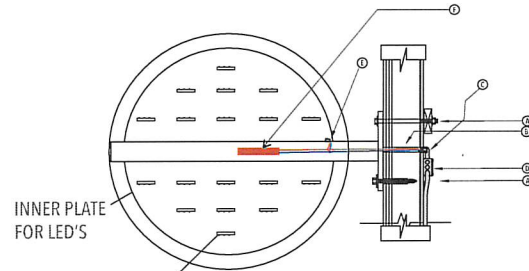
NOTE: TOTAL DEPTH OF BLADE, INCLUDING ALL ELEMENTS IS 5".



BLADE SECTION VIEW

NOTE: CLEAR ACRYLIC BLOCKS GLUED TO FACE TO PREVENT SHADOWING WHEN FACE ILLUMINATES

NOTE: 1/4" ALUMINUM 1/4" STROKE ADHERED TO FACE TO GIVE IT AN INSET LOOK. MATERIALS TBD BY MFG.



INNER PLATE FOR LED'S

NOTE: NOT ACTUAL LED LAYOUT. ENGINEERING TO DETERMINE LAYOUT.

NOTE: ONE SIDE OF FACE REMOVABLE FOR SERVICE

FABRICATION SPECIFICATIONS

1	CHANNEL WRAP	LIGHTING	7100K WHITE LED
		TYPE	D/F
		FRAME	2" X 2" ALUMINUM SQ. TUBE
		FRAME COLOR	PER COLOR KEY (P1)
		FACE COLOR	1/2" WHITE ACRYLIC
		VINYL	PER COLOR KEY (V1)
2	BRACKET	RETAINER	1/2" ALUMINUM
		RETAINER COLOR	PER COLOR KEY (P1)
		RETURN COLOR	PER COLOR KEY (P1)
		RETURN DEPTH	3 1/2"
		RING	1/4" ALUMINUM
		RING COLOR	PER COLOR KEY (P1)
		MATERIAL	1/2" ALUMINUM PLATE
		PAINT COLOR	PER COLOR KEY (P1)

NOTES

N ALL U.L. / MANUFACTURE LABELS MUST BE PLACED OUT OF VIEW. ALL SIGNAGE ATTACHMENTS, DISCONNECT SWITCHES, ETC. SHOULD BE LOCATED SO THEY ARE NOT VISIBLE TO THE CUSTOMER.

COLOR KEY

V1	VINYL	DIGITAL PRINT TO MATCH PANTONE 430 TRAFFIC GREY
P1	PAINT	MP 923SP BLACK (MATTE FINISH)

NOTE: THE COLORS DEPICTED ON THIS RENDERING REPRESENT COLOR INTENT ONLY AND MAY NOT MATCH ACTUAL COLORS ON FINISHED PRODUCT. PLEASE REFER TO COLOR CALL-OUTS AND SPECIFIED VENDOR SAMPLES FOR APPROVED COLOR SPECIFICATIONS.

SIGN TYPE: BLADE FLAG MOUNT
ILLUMINATION: FACE
ELECTRICAL: SELF CONTAINED
MOUNTING TYPE: MOUNT FLUSH TO WALL
ATTACHMENT: NON-CORROSIVE SECUREMENT
SELF CONTAINED BLADE SIGN ATTACHMENT DETAIL

- A. Non-Corrosive Securement - Threaded Rod, Lag Bolt or Lag and Shield (or appropriate mounting hardware) - Note: Blocking as Required per Installation Condition. '4' Total Required
- B. Pass-Thru Conduit
- C. 8'-0" x 1/2" Flexible Conduit Whip Out of Blade
- D. 20 amp 120v Circuit Required Within 5' of Sign (supplied by others than Image National)
- E. Internal Switch
- F. Transformer

It is the intent and purpose of this color rendering to provide a basic color representation of your sign finish and color. However, digital media and printed colors will vary from actual paint finish and color. Existing painted surfaces will have a perceptible difference in shade and sheen from your sign finish. Providing a sample of the paint you wish to match or a Matthews paint color formula will minimize the differences.

<p>...bringing your image to light!</p> <p>16265 Star Rd., Nampa, ID 83687 - toll free: 800.592.8058 - tele: 208.345.4020 imagenational.com</p>	<p>NAMPA PLANT - UL #433195-001</p> <p>U.S. & P.R. - All signs conform to UL-482161 (labeled accordingly) & must comply with UL-41.1 install procedures. Canada - all signs must be CAS compliant. This sign(s) is intended to be installed in accordance with requirements of article 600 of the National Electrical Code and/or applicable local codes. This includes proper grounding and bonding of the sign.</p>	<p>Client: Athleta</p>	<p>Design Number: FB-0595-22</p>	<p>File Location: ATH-1652-Somerville, MA-062022-R1</p>	<p>Page No.</p>
		<p>Site: 1652 501 Assembly Row Space 408 Somerville, MA 02145</p>	<p>Date: 06/20/22</p> <p>Designer: Dave J</p> <p>Account Manager: Sebastian Rodriguez</p>		<p>8 of 8</p>