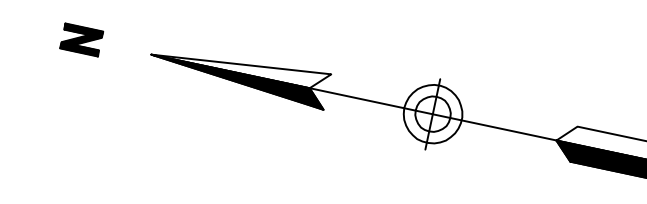
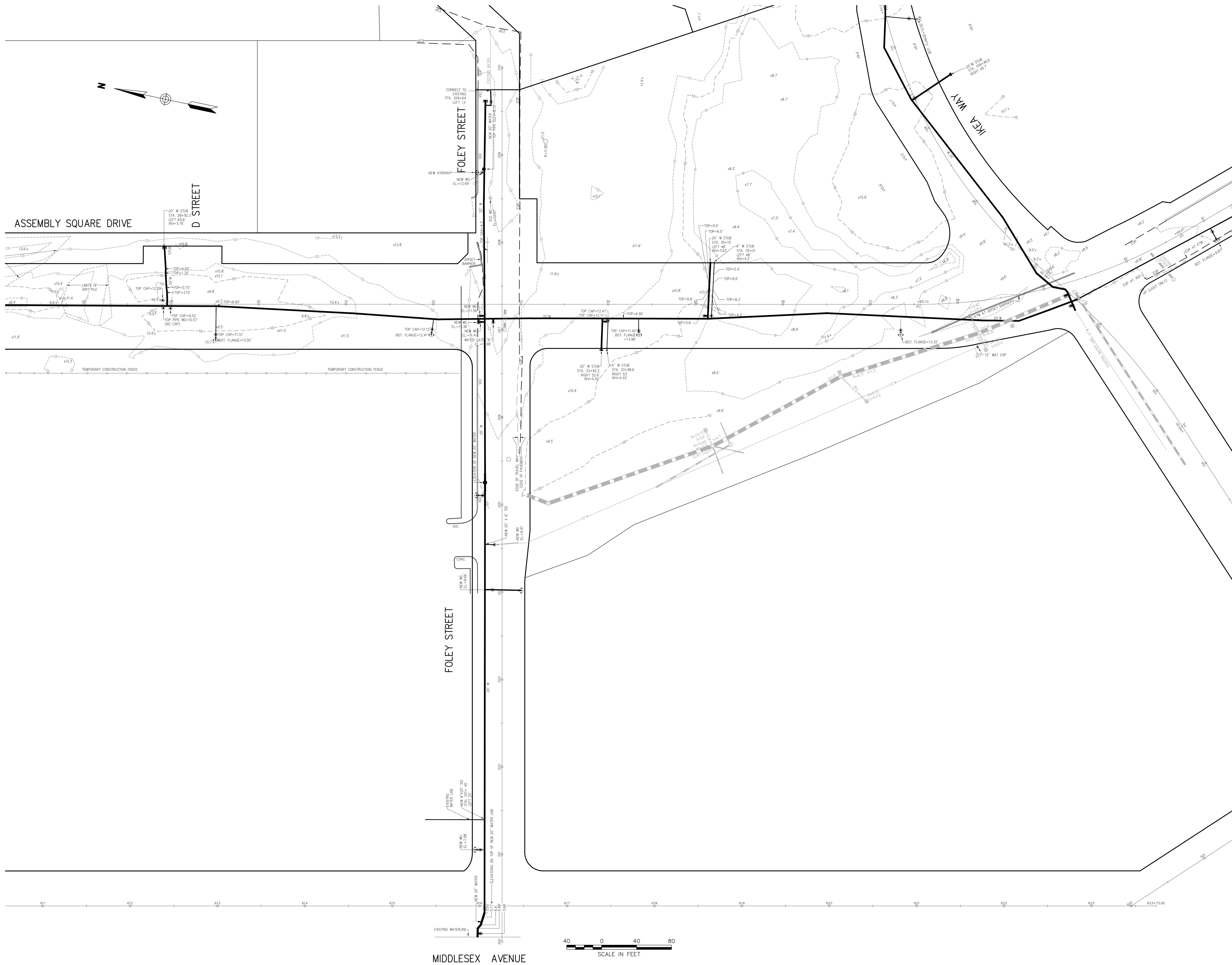




Vanasse Hangen Brustlin, Inc.

Transportation  
Land Development  
Environmental Services

101 Walnut Street, P.O. Box 9151  
Watertown, Massachusetts 02471-9151  
617 924 1770 • FAX 617 924 2286



**Legend**

- X.XX ELEVATION NOT OBTAINABLE
- DMI
- CB
- SMH
- EMH
- TMH
- MANHOLE
- HANDHOLE
- ★ WATER GATE
- ⊙ FIRE HYDRANT
- GAS GATE
- ☆ LIGHT POLE
- ⊥ UTILITY POLE
- GUY WIRE
- GUY POLE
- MONITORING WELL
- CC — EDGE OF PAVEMENT
- WOC — CONCRETE CURB
- VGC — VERTICAL GRANITE CURB
- SGE — SLOPED GRANITE EDGE
- BB — BITUMINOUS BERM
- GR — GUARD RAIL
- CLF — CHAIN LINK FENCE
- DL — DRAINAGE LINE
- SL — SEWER LINE
- OHW — OVERHEAD WIRE
- UL — UNDERGROUND ELECTRIC
- T — TELEPHONE LINE
- G — GAS LINE
- W — WATER LINE
- R.O.W. LINES


1 - edited plan based on peer 5/4/10 bsp  
 No. revisions comments Date Revison  
 Designed by: \_\_\_\_\_ Drawn by: \_\_\_\_\_ Checked by: \_\_\_\_\_  
 CAD checked by: \_\_\_\_\_ Approved by: \_\_\_\_\_  
 Scale: 1"=40' Date: January 25, 2010  
 Project Title:

**Assembly Square Drive**

Somerville, Massachusetts  
 Issued for:

Drawing Title  
**Water As-Built  
 Plan of Land**

Drawing Number  
**Sv-2**  
 Sheet of 2 3  
 Project Number  
**10923.00**



\\mewald\id\10923.00\cad\sr\plan\10923.00\_sewer\_ab.dwg