



CITY OF SOMERVILLE
Commonwealth of Massachusetts
93 Highland Avenue
Somerville, MA 02143
(617) 625-6600

BUSINESS LICENSE APPLICATION - Grant of Location

File #: 21-005950

License #: BL21-000072

Address: 765 SOMERVILLE AVE

Licensee: Bill Conway Axis Engineering Group

DBA Name: RCN TELECOM SERVICE OF MASSACHUSETTS, LLC

Business Ownership Type: Corporation

Legal Name of Entity: RCN TELECOM SERVICE OF MASSACHUSETTS, LLC

Owners/Officers: , , ,

License Information:

Grant of location issued to: RCN TELECOM SERVICE OF MASSACHUSETTS, LLC

Describe the reason for the work, and the intended beneficiaries: THE PURPOSE OF THE PROPOSED WORK IS TO LINK THE RCN AERIAL NETWORK WITH THE UNDERGROUND NETWORK TO PROVIDE BETTER SERVICE FOR THE RESIDENTS OF SOMERVILLE.

Insert here the same detailed description of the work as appears in the attached Grant of Location Order: STARTING AT UTILITY POLE # 545/1 ON SOMERVILLE AVE, TRENCH AND INSTALL (1) 4' CONDUIT 7' +/- TO EXISTING RCN CONDUIT STUBBED IN THE SIDEWALK.

Approval Conditions:

Approved By:

Karla Cuarezma, Approved

Malik Drayton, Approved with Conditions

APPROVAL CONDITION: MD20210519: Contractor shall take all necessary precautions to avoid damaging any tree or tree part with equipment.

APPROVAL CONDITION: MD20210519: All nearby street tree(s) shall be protected prior to and during all construction activities using TREE BOX or TREE WRAPS. . TREE BOX shall be constructed from 2 in. x 4 in. lumber creating a box around the border of the tree pit with 2 in. x 4 in. lumber standing straight up at the corners and wrapped with orange snow fence. Detail attached. . TREE WRAPS (TREE TRUNK WRAPPING PROTECTION LUMBER) shall consist of 2 in. x 4 in. and 8 ft. height lumber wired together in close spacing with zip ties or 16 gauge galvanized steel wire to form a protective enclosure around tree trunks. Use burlap to separate the wood from the bark if necessary

to prevent wood from scraping or bruising bark. Do not use staples or puncture the trunk in any way. APPROVAL CONDITION: MD20210519: Any tree roots less than two (2) inches in diameter that cannot be avoided during construction shall be carefully and cleanly cut with a clean pair of pruning shears or loppers. Roots are to be cut back flush with the edge of the trench. If any tree roots greater than two (2) inches in diameter are encountered, stop work immediately and contact the City Urban Forester. Any and all pruning of roots greater than 2 inches in diameter must be completed under the supervision of the City Urban Forester.

Mark Lawhorne, Approved

John J. Long, Approved



CITY OF SOMERVILLE, MASSACHUSETTS
CITY CLERK'S OFFICE
JOSEPH A. CURTATONE
MAYOR

JOHN J. LONG
CITY CLERK

June 1, 2021

NOTICE OF PUBLIC HEARING

You are hereby notified that the Somerville City Council will hold a Public Hearing on the following Petition. You are receiving this Notice because the Petitioner has reported that you own property that abuts the work that is being proposed. You and other members of the public are invited to attend and be heard at this Hearing.

Because of Governor Baker's and Mayor Curtatone's recent orders limiting the number of people that may gather in one place, **this meeting of the City Council will be conducted via remote participation, online in a webinar hosted on the GoToWebinar platform.**

You have two ways to be heard at this meeting:

1. To attend and be heard, enter the link exactly as it appears below into your internet browser any time before the meeting. You will then be asked to register for the meeting. After registering, you will receive an email with instructions to join the webinar when it starts.
2. If you are unable to attend but wish to be heard, you may send written comments by US mail to the City Clerk at the address below, or by email to cityclerk@somervillema.gov. Your comments must arrive no later than 12 Noon on the day of the Hearing, in order to be sure they are conveyed to the Council.

PETITION: RCN Telecom is applying for a Grant of Location to install 7 feet of conduit in the intersection of Somerville Avenue and Adelaide Road, from Utility Pole 545/1 to existing RCN conduit.

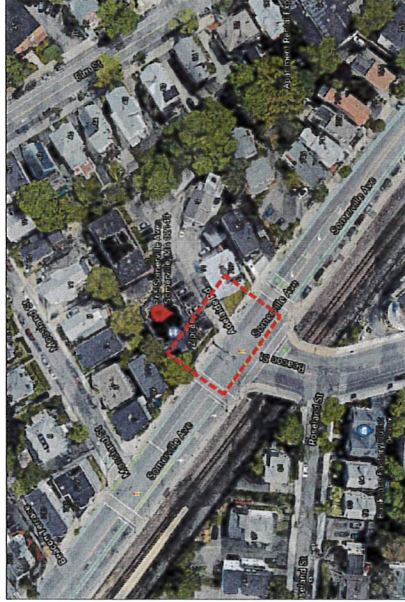
PLACE: <https://attendee.gotowebinar.com/register/1689321966105505805>.

TIME: Thursday, June 10, 2021 at 7:00 PM.

PURPOSE: The work is necessary to provide or improve service to the surrounding area.



**PROPOSED CONDUIT INSTALLATION
AT
765 SOMERVILLE AVE
SOMERVILLE, MA**



LOCUS
N.T.S

INDEX OF DRAWING

SHEET NO.	DESCRIPTION
01	COVER SHEET PROPOSED CONDUIT INSTALLATION

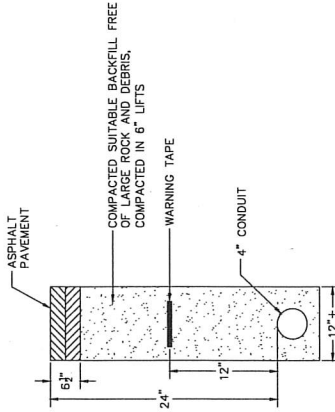
AXIS
ENGINEERING GROUP
201 Boston Post Rd West - Suite 100
Marlborough, MA 01752
(774) 556-2924 www.axisgroup.com

May 5, 2021

GENERAL NOTES

1. THE LOCATIONS OF EXISTING UNDERGROUND UTILITIES ARE SHOWN IN AN APPROXIMATE WAY ONLY AND HAVE NOT BEEN INDEPENDENTLY VERIFIED BY THE OWNER OR ITS REPRESENTATIVE. THE CONTRACTOR SHALL DETERMINE THE EXACT LOCATION OF ALL EXISTING UTILITIES BY THE MOST ACCURATE METHODS AVAILABLE. THE CONTRACTOR SHALL BE RESPONSIBLE FOR ANY AND ALL DAMAGES WHICH MIGHT BE OCCURRED BY THE CONTRACTOR'S FAILURE TO EXACTLY LOCATE AND PRESERVE ANY AND ALL UNDERGROUND UTILITIES.
2. WHERE AN EXISTING UTILITY IS FOUND TO CONFLICT WITH THE PROPOSED WORK, THE LOCATION, ELEVATION AND SIZE OF THE UTILITY SHALL BE ACCURATELY DETERMINED WITHOUT DELAY BY THE CONTRACTOR, AND THE INFORMATION FURNISHED TO THE ENGINEER FOR RESOLUTION OF THE CONFLICT.
3. THE CONTRACTOR SHOULD MAINTAIN A SEPARATION OF 18 INCHES MIN. WHEN CROSSING EXISTING WATER FACILITIES.
4. THE CONTRACTOR SHALL MAKE ALL ARRANGEMENTS FOR THE ALTERATION AND ADJUSTMENT OF GAS, ELECTRIC, TELEPHONE AND ANY OTHER PRIVATE UTILITIES BY THE UTILITY COMPANY.
5. THE CONTRACTOR SHALL NOT DISTURB PUBLIC TREES AND SHRUBS.
6. AREAS OUTSIDE THE LIMITS OF PROPOSED WORK DISTURBED BY THE CONTRACTOR'S OPERATIONS SHALL BE RESTORED BY THE CONTRACTOR TO THEIR ORIGINAL CONDITION AT NO EXPENSE TO THE OWNER.
7. THE CONTRACTOR SHALL BE RESPONSIBLE FOR PLACING AND MAINTAINING TEMPORARY RESURFACING AND/OR PLATING FOR ALL EXCAVATIONS IN PAVED STREETS AND SIDEWALKS UNTIL PERMANENT RESURFACING IS COMPLETE.
8. JOINTS BETWEEN NEW BITUMINOUS CONCRETE ROADWAY PAVEMENT AND SAW CUT EXISTING PAVEMENT SHALL BE SEALED WITH BITUMEN AND BACK SANDED.
9. THE CONTRACTOR SHALL PROTECT AND SUPPORT ALL EXISTING UTILITY LINES THAT BECOME EXPOSED DUE TO EXCAVATION REQUIRED TO INSTALL THE PROPOSED CONDUIT.
10. THE CONTRACTOR SHALL REPLACE ALL DISTURBED TRAFFIC SIGNAL LOOP DETECTORS TO GOOD WORKING CONDITION AS REQUIRED BY THE LATEST STANDARDS OF THE MUNICIPAL TRAFFIC DEPARTMENT.
11. ALL EXISTING STATE, COUNTY, CITY, AND TOWN LOCATION LINES AND PRIVATE PROPERTY LINES HAVE BEEN ESTABLISHED FROM AVAILABLE INFORMATION AND THEIR EXACT LOCATION ARE NOT GUARANTEED.
12. THE CONTRACTOR SHALL REPLACE ALL PAVEMENT MARKINGS IN THEIR ENTIRETY THAT HAVE BEEN DAMAGED BY TRENCH EXCAVATION OR OPERATIONS OF THE CONTRACTOR WITH SIMILAR COLOR AND SIZE THERMOPLASTIC MARKINGS.
13. ALL CITY SHADOW CONDUITS SHALL BE BROUGHT INTO EVERY MANHOLE/HANDHOLE.

- * - ITEM SHOWN ON UTILITY RECORDS, BUT NOT FOUND IN FIELD.
- - - ITEM FOUND IN FIELD, BUT NOT IN UTILITY RECORDS.



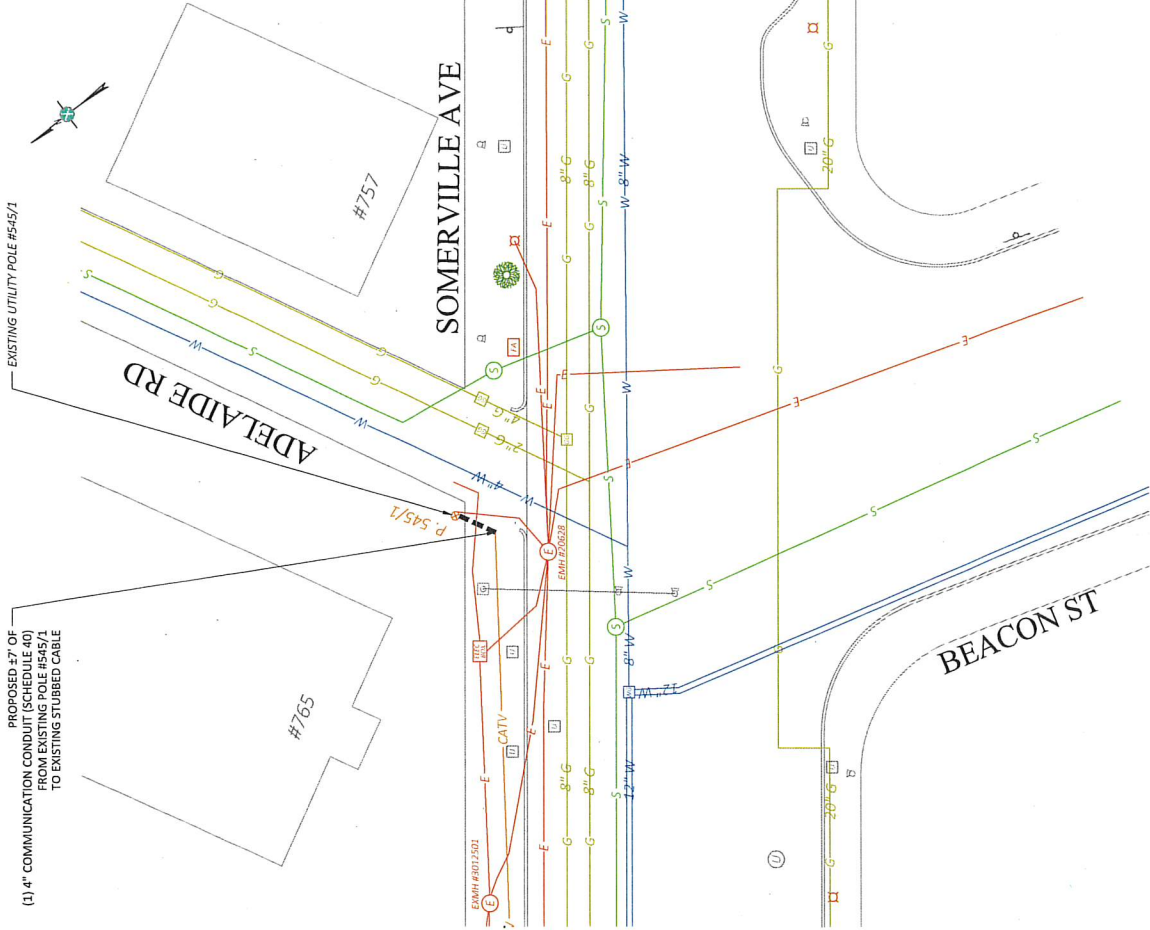
ROADWAY PATCH AND DUCT BANK INSTALLATION DETAIL

N.T.S.

TRENCH DETAIL NOTES:

1. 24" MAXIMUM FROM TOP OF CONDUIT TO SURFACE.
2. 12" FROM TOP OF CONDUIT TO METALLIC WARNING TAPE PLACED ABOVE.
3. REPAIR SIDEWALKS AND WALKWAYS WITH SAME MATERIALS AS EXISTING.

PROPOSED 37' OF (1) 4" COMMUNICATION CONDUIT (SCHEDULE 40) FROM EXISTING POLE #545/1 TO EXISTING STUBBED CABLE



LEGEND

⊗	ELECTRIC POLE	⊗	TELEPHONE POLE
⊙	LAMP POST	⊙	TELEPHONE
⊕	TRAFFIC LIGHT	⊕	TRAFFIC SIGNAL
⊖	TRAFFIC SIGN	⊖	TRAFFIC SIGNAL
⊗	TRAFFIC SIGN	⊗	TRAFFIC SIGNAL
⊙	ELECTRIC SIGN	⊙	TRAFFIC SIGNAL
⊕	ELECTRIC SIGN	⊕	TRAFFIC SIGNAL
⊖	ELECTRIC SIGN	⊖	TRAFFIC SIGNAL
⊗	ELECTRIC SIGN	⊗	TRAFFIC SIGNAL
⊙	ELECTRIC SIGN	⊙	TRAFFIC SIGNAL
⊕	ELECTRIC SIGN	⊕	TRAFFIC SIGNAL
⊖	ELECTRIC SIGN	⊖	TRAFFIC SIGNAL
⊗	ELECTRIC SIGN	⊗	TRAFFIC SIGNAL
⊙	ELECTRIC SIGN	⊙	TRAFFIC SIGNAL
⊕	ELECTRIC SIGN	⊕	TRAFFIC SIGNAL
⊖	ELECTRIC SIGN	⊖	TRAFFIC SIGNAL
⊗	ELECTRIC SIGN	⊗	TRAFFIC SIGNAL
⊙	ELECTRIC SIGN	⊙	TRAFFIC SIGNAL
⊕	ELECTRIC SIGN	⊕	TRAFFIC SIGNAL
⊖	ELECTRIC SIGN	⊖	TRAFFIC SIGNAL
⊗	ELECTRIC SIGN	⊗	TRAFFIC SIGNAL
⊙	ELECTRIC SIGN	⊙	TRAFFIC SIGNAL
⊕	ELECTRIC SIGN	⊕	TRAFFIC SIGNAL
⊖	ELECTRIC SIGN	⊖	TRAFFIC SIGNAL
⊗	ELECTRIC SIGN	⊗	TRAFFIC SIGNAL
⊙	ELECTRIC SIGN	⊙	TRAFFIC SIGNAL
⊕	ELECTRIC SIGN	⊕	TRAFFIC SIGNAL
⊖	ELECTRIC SIGN	⊖	TRAFFIC SIGNAL
⊗	ELECTRIC SIGN	⊗	TRAFFIC SIGNAL
⊙	ELECTRIC SIGN	⊙	TRAFFIC SIGNAL
⊕	ELECTRIC SIGN	⊕	TRAFFIC SIGNAL
⊖	ELECTRIC SIGN	⊖	TRAFFIC SIGNAL
⊗	ELECTRIC SIGN	⊗	TRAFFIC SIGNAL
⊙	ELECTRIC SIGN	⊙	TRAFFIC SIGNAL
⊕	ELECTRIC SIGN	⊕	TRAFFIC SIGNAL
⊖	ELECTRIC SIGN	⊖	TRAFFIC SIGNAL
⊗	ELECTRIC SIGN	⊗	TRAFFIC SIGNAL
⊙	ELECTRIC SIGN	⊙	TRAFFIC SIGNAL
⊕	ELECTRIC SIGN	⊕	TRAFFIC SIGNAL
⊖	ELECTRIC SIGN	⊖	TRAFFIC SIGNAL
⊗	ELECTRIC SIGN	⊗	TRAFFIC SIGNAL
⊙	ELECTRIC SIGN	⊙	TRAFFIC SIGNAL
⊕	ELECTRIC SIGN	⊕	TRAFFIC SIGNAL
⊖	ELECTRIC SIGN	⊖	TRAFFIC SIGNAL
⊗	ELECTRIC SIGN	⊗	TRAFFIC SIGNAL
⊙	ELECTRIC SIGN	⊙	TRAFFIC SIGNAL
⊕	ELECTRIC SIGN	⊕	TRAFFIC SIGNAL
⊖	ELECTRIC SIGN	⊖	TRAFFIC SIGNAL
⊗	ELECTRIC SIGN	⊗	TRAFFIC SIGNAL
⊙	ELECTRIC SIGN	⊙	TRAFFIC SIGNAL
⊕	ELECTRIC SIGN	⊕	TRAFFIC SIGNAL
⊖	ELECTRIC SIGN	⊖	TRAFFIC SIGNAL
⊗	ELECTRIC SIGN	⊗	TRAFFIC SIGNAL
⊙	ELECTRIC SIGN	⊙	TRAFFIC SIGNAL
⊕	ELECTRIC SIGN	⊕	TRAFFIC SIGNAL
⊖	ELECTRIC SIGN	⊖	TRAFFIC SIGNAL
⊗	ELECTRIC SIGN	⊗	TRAFFIC SIGNAL
⊙	ELECTRIC SIGN	⊙	TRAFFIC SIGNAL
⊕	ELECTRIC SIGN	⊕	TRAFFIC SIGNAL
⊖	ELECTRIC SIGN	⊖	TRAFFIC SIGNAL
⊗	ELECTRIC SIGN	⊗	TRAFFIC SIGNAL
⊙	ELECTRIC SIGN	⊙	TRAFFIC SIGNAL
⊕	ELECTRIC SIGN	⊕	TRAFFIC SIGNAL
⊖	ELECTRIC SIGN	⊖	TRAFFIC SIGNAL
⊗	ELECTRIC SIGN	⊗	TRAFFIC SIGNAL
⊙	ELECTRIC SIGN	⊙	TRAFFIC SIGNAL
⊕	ELECTRIC SIGN	⊕	TRAFFIC SIGNAL
⊖	ELECTRIC SIGN	⊖	TRAFFIC SIGNAL
⊗	ELECTRIC SIGN	⊗	TRAFFIC SIGNAL
⊙	ELECTRIC SIGN	⊙	TRAFFIC SIGNAL
⊕	ELECTRIC SIGN	⊕	TRAFFIC SIGNAL
⊖	ELECTRIC SIGN	⊖	TRAFFIC SIGNAL
⊗	ELECTRIC SIGN	⊗	TRAFFIC SIGNAL
⊙	ELECTRIC SIGN	⊙	TRAFFIC SIGNAL
⊕	ELECTRIC SIGN	⊕	TRAFFIC SIGNAL
⊖	ELECTRIC SIGN	⊖	TRAFFIC SIGNAL
⊗	ELECTRIC SIGN	⊗	TRAFFIC SIGNAL
⊙	ELECTRIC SIGN	⊙	TRAFFIC SIGNAL
⊕	ELECTRIC SIGN	⊕	TRAFFIC SIGNAL
⊖	ELECTRIC SIGN	⊖	TRAFFIC SIGNAL
⊗	ELECTRIC SIGN	⊗	TRAFFIC SIGNAL
⊙	ELECTRIC SIGN	⊙	TRAFFIC SIGNAL
⊕	ELECTRIC SIGN	⊕	TRAFFIC SIGNAL
⊖	ELECTRIC SIGN	⊖	TRAFFIC SIGNAL
⊗	ELECTRIC SIGN	⊗	TRAFFIC SIGNAL
⊙	ELECTRIC SIGN	⊙	TRAFFIC SIGNAL
⊕	ELECTRIC SIGN	⊕	TRAFFIC SIGNAL
⊖	ELECTRIC SIGN	⊖	TRAFFIC SIGNAL
⊗	ELECTRIC SIGN	⊗	TRAFFIC SIGNAL
⊙	ELECTRIC SIGN	⊙	TRAFFIC SIGNAL
⊕	ELECTRIC SIGN	⊕	TRAFFIC SIGNAL
⊖	ELECTRIC SIGN	⊖	TRAFFIC SIGNAL
⊗	ELECTRIC SIGN	⊗	TRAFFIC SIGNAL
⊙	ELECTRIC SIGN	⊙	TRAFFIC SIGNAL
⊕	ELECTRIC SIGN	⊕	TRAFFIC SIGNAL
⊖	ELECTRIC SIGN	⊖	TRAFFIC SIGNAL
⊗	ELECTRIC SIGN	⊗	TRAFFIC SIGNAL
⊙	ELECTRIC SIGN	⊙	TRAFFIC SIGNAL
⊕	ELECTRIC SIGN	⊕	TRAFFIC SIGNAL
⊖	ELECTRIC SIGN	⊖	TRAFFIC SIGNAL
⊗	ELECTRIC SIGN	⊗	TRAFFIC SIGNAL
⊙	ELECTRIC SIGN	⊙	TRAFFIC SIGNAL
⊕	ELECTRIC SIGN	⊕	TRAFFIC SIGNAL
⊖	ELECTRIC SIGN	⊖	TRAFFIC SIGNAL
⊗	ELECTRIC SIGN	⊗	TRAFFIC SIGNAL
⊙	ELECTRIC SIGN	⊙	TRAFFIC SIGNAL
⊕	ELECTRIC SIGN	⊕	TRAFFIC SIGNAL
⊖	ELECTRIC SIGN	⊖	TRAFFIC SIGNAL
⊗	ELECTRIC SIGN	⊗	TRAFFIC SIGNAL
⊙	ELECTRIC SIGN	⊙	TRAFFIC SIGNAL
⊕	ELECTRIC SIGN	⊕	TRAFFIC SIGNAL
⊖	ELECTRIC SIGN	⊖	TRAFFIC SIGNAL
⊗	ELECTRIC SIGN	⊗	TRAFFIC SIGNAL
⊙	ELECTRIC SIGN	⊙	TRAFFIC SIGNAL
⊕	ELECTRIC SIGN	⊕	TRAFFIC SIGNAL
⊖	ELECTRIC SIGN	⊖	TRAFFIC SIGNAL
⊗	ELECTRIC SIGN	⊗	TRAFFIC SIGNAL
⊙	ELECTRIC SIGN	⊙	TRAFFIC SIGNAL
⊕	ELECTRIC SIGN	⊕	TRAFFIC SIGNAL
⊖	ELECTRIC SIGN	⊖	TRAFFIC SIGNAL
⊗	ELECTRIC SIGN	⊗	TRAFFIC SIGNAL
⊙	ELECTRIC SIGN	⊙	TRAFFIC SIGNAL
⊕	ELECTRIC SIGN	⊕	TRAFFIC SIGNAL
⊖	ELECTRIC SIGN	⊖	TRAFFIC SIGNAL
⊗	ELECTRIC SIGN	⊗	TRAFFIC SIGNAL
⊙	ELECTRIC SIGN	⊙	TRAFFIC SIGNAL
⊕	ELECTRIC SIGN	⊕	TRAFFIC SIGNAL
⊖	ELECTRIC SIGN	⊖	TRAFFIC SIGNAL
⊗	ELECTRIC SIGN	⊗	TRAFFIC SIGNAL
⊙	ELECTRIC SIGN	⊙	TRAFFIC SIGNAL
⊕	ELECTRIC SIGN	⊕	TRAFFIC SIGNAL
⊖	ELECTRIC SIGN	⊖	TRAFFIC SIGNAL
⊗	ELECTRIC SIGN	⊗	TRAFFIC SIGNAL
⊙	ELECTRIC SIGN	⊙	TRAFFIC SIGNAL
⊕	ELECTRIC SIGN	⊕	TRAFFIC SIGNAL
⊖	ELECTRIC SIGN	⊖	TRAFFIC SIGNAL
⊗	ELECTRIC SIGN	⊗	TRAFFIC SIGNAL
⊙	ELECTRIC SIGN	⊙	TRAFFIC SIGNAL
⊕	ELECTRIC SIGN	⊕	TRAFFIC SIGNAL
⊖	ELECTRIC SIGN	⊖	TRAFFIC SIGNAL
⊗	ELECTRIC SIGN	⊗	TRAFFIC SIGNAL
⊙	ELECTRIC SIGN	⊙	TRAFFIC SIGNAL
⊕	ELECTRIC SIGN	⊕	TRAFFIC SIGNAL
⊖	ELECTRIC SIGN	⊖	TRAFFIC SIGNAL
⊗	ELECTRIC SIGN	⊗	TRAFFIC SIGNAL
⊙	ELECTRIC SIGN	⊙	TRAFFIC SIGNAL
⊕	ELECTRIC SIGN	⊕	TRAFFIC SIGNAL
⊖	ELECTRIC SIGN	⊖	TRAFFIC SIGNAL
⊗	ELECTRIC SIGN	⊗	TRAFFIC SIGNAL
⊙	ELECTRIC SIGN	⊙	TRAFFIC SIGNAL
⊕	ELECTRIC SIGN	⊕	TRAFFIC SIGNAL
⊖	ELECTRIC SIGN	⊖	TRAFFIC SIGNAL
⊗	ELECTRIC SIGN	⊗	TRAFFIC SIGNAL
⊙	ELECTRIC SIGN	⊙	TRAFFIC SIGNAL
⊕	ELECTRIC SIGN	⊕	TRAFFIC SIGNAL
⊖	ELECTRIC SIGN	⊖	TRAFFIC SIGNAL
⊗	ELECTRIC SIGN	⊗	TRAFFIC SIGNAL
⊙	ELECTRIC SIGN	⊙	TRAFFIC SIGNAL
⊕	ELECTRIC SIGN	⊕	TRAFFIC SIGNAL
⊖	ELECTRIC SIGN	⊖	TRAFFIC SIGNAL
⊗	ELECTRIC SIGN	⊗	TRAFFIC SIGNAL
⊙	ELECTRIC SIGN	⊙	TRAFFIC SIGNAL
⊕	ELECTRIC SIGN	⊕	TRAFFIC SIGNAL
⊖	ELECTRIC SIGN	⊖	TRAFFIC SIGNAL
⊗	ELECTRIC SIGN	⊗	TRAFFIC SIGNAL
⊙	ELECTRIC SIGN	⊙	TRAFFIC SIGNAL
⊕	ELECTRIC SIGN	⊕	TRAFFIC SIGNAL
⊖	ELECTRIC SIGN	⊖	TRAFFIC SIGNAL
⊗	ELECTRIC SIGN	⊗	TRAFFIC SIGNAL
⊙	ELECTRIC SIGN	⊙	TRAFFIC SIGNAL
⊕	ELECTRIC SIGN	⊕	TRAFFIC SIGNAL
⊖	ELECTRIC SIGN	⊖	TRAFFIC SIGNAL
⊗	ELECTRIC SIGN	⊗	TRAFFIC SIGNAL
⊙	ELECTRIC SIGN	⊙	TRAFFIC SIGNAL
⊕	ELECTRIC SIGN	⊕	TRAFFIC SIGNAL
⊖	ELECTRIC SIGN	⊖	TRAFFIC SIGNAL
⊗	ELECTRIC SIGN	⊗	TRAFFIC SIGNAL
⊙	ELECTRIC SIGN	⊙	TRAFFIC SIGNAL
⊕	ELECTRIC SIGN	⊕	TRAFFIC SIGNAL
⊖	ELECTRIC SIGN	⊖	TRAFFIC SIGNAL
⊗	ELECTRIC SIGN	⊗	TRAFFIC SIGNAL
⊙	ELECTRIC SIGN	⊙	TRAFFIC SIGNAL
⊕	ELECTRIC SIGN	⊕	TRAFFIC SIGNAL
⊖	ELECTRIC SIGN	⊖	TRAFFIC SIGNAL
⊗	ELECTRIC SIGN	⊗	TRAFFIC SIGNAL
⊙	ELECTRIC SIGN	⊙	TRAFFIC SIGNAL
⊕	ELECTRIC SIGN	⊕	TRAFFIC SIGNAL
⊖	ELECTRIC SIGN	⊖	TRAFFIC SIGNAL
⊗	ELECTRIC SIGN	⊗	TRAFFIC SIGNAL
⊙	ELECTRIC SIGN	⊙	TRAFFIC SIGNAL
⊕	ELECTRIC SIGN	⊕	TRAFFIC SIGNAL
⊖	ELECTRIC SIGN	⊖	TRAFFIC SIGNAL
⊗	ELECTRIC SIGN	⊗	TRAFFIC SIGNAL
⊙	ELECTRIC SIGN	⊙	TRAFFIC SIGNAL
⊕	ELECTRIC SIGN	⊕	TRAFFIC SIGNAL
⊖	ELECTRIC SIGN	⊖	TRAFFIC SIGNAL
⊗	ELECTRIC SIGN	⊗	TRAFFIC SIGNAL
⊙	ELECTRIC SIGN	⊙	TRAFFIC SIGNAL
⊕	ELECTRIC SIGN	⊕	TRAFFIC SIGNAL
⊖	ELECTRIC SIGN	⊖	TRAFFIC SIGNAL
⊗	ELECTRIC SIGN	⊗	TRAFFIC SIGNAL
⊙	ELECTRIC SIGN	⊙	TRAFFIC SIGNAL
⊕	ELECTRIC SIGN	⊕	TRAFFIC SIGNAL
⊖	ELECTRIC SIGN	⊖	TRAFFIC SIGNAL
⊗	ELECTRIC SIGN	⊗	TRAFFIC SIGNAL
⊙	ELECTRIC SIGN	⊙	TRAFFIC SIGNAL
⊕	ELECTRIC SIGN	⊕	TRAFFIC SIGNAL
⊖	ELECTRIC SIGN	⊖	TRAFFIC SIGNAL
⊗	ELECTRIC SIGN	⊗	TRAFFIC SIGNAL
⊙	ELECTRIC SIGN	⊙	TRAFFIC SIGNAL
⊕	ELECTRIC SIGN	⊕	TRAFFIC SIGNAL
⊖	ELECTRIC SIGN	⊖	TRAFFIC SIGNAL
⊗	ELECTRIC SIGN	⊗	TRAFFIC SIGNAL
⊙	ELECTRIC SIGN	⊙	TRAFFIC SIGNAL
⊕	ELECTRIC SIGN	⊕	TRAFFIC SIGNAL
⊖	ELECTRIC SIGN	⊖	TRAFFIC SIGNAL
⊗	ELECTRIC SIGN	⊗	TRAFFIC SIGNAL
⊙	ELECTRIC SIGN	⊙	TRAFFIC SIGNAL
⊕	ELECTRIC SIGN	⊕	TRAFFIC SIGNAL
⊖	ELECTRIC SIGN	⊖	TRAFFIC SIGNAL
⊗	ELECTRIC SIGN	⊗	TRAFFIC SIGNAL
⊙	ELECTRIC SIGN	⊙	TRAFFIC SIGNAL
⊕	ELECTRIC SIGN	⊕	TRAFFIC SIGNAL
⊖	ELECTRIC SIGN	⊖	TRAFFIC SIGNAL
⊗	ELECTRIC SIGN	⊗	TRAFFIC SIGNAL
⊙	ELECTRIC SIGN	⊙	TRAFFIC SIGNAL
⊕	ELECTRIC SIGN	⊕	TRAFFIC SIGNAL
⊖	ELECTRIC SIGN	⊖	TRAFFIC SIGNAL
⊗	ELECTRIC SIGN	⊗	TRAFFIC SIGNAL
⊙	ELECTRIC SIGN	⊙	TRAFFIC SIGNAL
⊕	ELECTRIC SIGN	⊕	TRAFFIC SIGNAL
⊖	ELECTRIC SIGN	⊖	TRAFFIC SIGNAL
⊗	ELECTRIC SIGN	⊗	TRAFFIC SIGNAL
⊙	ELECTRIC SIGN	⊙	TRAFFIC SIGNAL
⊕	ELECTRIC SIGN	⊕	TRAFFIC SIGNAL
⊖	ELECTRIC SIGN	⊖	TRAFFIC SIGNAL
⊗	ELECTRIC SIGN	⊗	TRAFFIC SIGNAL
⊙	ELECTRIC SIGN	⊙	TRAFFIC SIGNAL
⊕	ELECTRIC SIGN	⊕	TRAFFIC SIGNAL
⊖	ELECTRIC SIGN	⊖	TRAFFIC SIGNAL
⊗	ELECTRIC SIGN	⊗	TRAFFIC SIGNAL
⊙	ELECTRIC SIGN	⊙	TRAFFIC SIGNAL
⊕	ELECTRIC SIGN	⊕	TRAFFIC SIGNAL
⊖	ELECTRIC SIGN	⊖	TRAFFIC SIGNAL
⊗	ELECTRIC SIGN	⊗	TRAFFIC SIGNAL
⊙	ELECTRIC SIGN	⊙	TRAFFIC SIGNAL
⊕	ELECTRIC SIGN		

Location:
37/ A/ 33/ /
765 SOMERVILLE AVE
Owner:
NANSTAN REALTY LLC
C/O PORTER SQ REALTY
765 SOMERVILLE AVE #3
SOMERVILLE, MA 02143

Location:
37/ A/ 27/ /
757 SOMERVILLE AVE
Owner:
DEMERJIAN PAUL JOSEPH
6 BLUEBERRY LANE
STONEHAM, MA 02180