



CITY OF SOMERVILLE
Commonwealth of Massachusetts
93 Highland Avenue
Somerville, MA 02143
(617) 625-6600

BUSINESS LICENSE APPLICATION - Grant of Location

File #: 21-003968

License #: BL21-000048

Address: 1244 BROADWAY

Licensee: Dave Flewelling Comcast of Massachusetts/ New Hampshire, LLC

DBA Name: Comcast Cable Communications Management, LLC

Business Ownership Type: LLC

Legal Name of Entity: Comcast Cable Communications Management, LLC

Owners/Officers: Brian Roberts, Brian Roberts, Brian Roberts, Brian Roberts

License Information:

Grant of location issued to: Comcast Cable Communications Management, LLC

Describe the reason for the work, and the intended beneficiaries: Providing Comcast service to new business

Insert here the same detailed description of the work as appears in the attached Grant of Location Order: Farragut Ave: Starting at Utility Pole 220/1 excavating to place (1) 4' +/- to number 1244 Broadway.

Approval Conditions:

Approved By:

Karla Cuarezma, Approved

Malik Drayton, Approved with Conditions

APPROVAL CONDITION: MD20210405: Contractor shall take all necessary precautions to avoid damaging any tree or tree part with equipment.

APPROVAL CONDITION: MD20210405: All nearby street tree(s) shall be protected prior to and during all construction activities using TREE BOX or TREE WRAPS. . TREE BOX shall be constructed from 2 in. x 4 in. lumber creating a box around the border of the tree pit with 2 in. x 4 in. lumber standing straight up at the corners and wrapped with orange snow fence. Detail attached. . TREE WRAPS (TREE TRUNK WRAPPING PROTECTION LUMBER) shall consist of 2 in. x 4 in. and 8 ft. height lumber wired together in close spacing with zip ties or 16 gauge galvanized steel wire to form a protective enclosure around tree trunks. Use burlap to separate the wood from the bark if necessary to prevent wood from scraping or bruising bark. Do not use staples or puncture the trunk in any way.

APPROVAL CONDITION: MD20210405: Any tree roots less than two (2) inches in diameter that

cannot be avoided during construction shall be carefully and cleanly cut with a clean pair of pruning shears or loppers. Roots are to be cut back flush with the edge of the trench. If any tree roots greater than two (2) inches in diameter are encountered, stop work immediately and contact the City Urban Forester. Any and all pruning of roots greater than 2 inches in diameter must be completed under the supervision of the City Urban Forester.

Mark Lawhorne, Approved

John J. Long, Approved



CITY OF SOMERVILLE, MASSACHUSETTS
CITY CLERK'S OFFICE
JOSEPH A. CURTATONE
MAYOR

JOHN J. LONG
CITY CLERK

April 14, 2021

NOTICE OF PUBLIC HEARING

You are hereby notified that the Somerville City Council will hold a Public Hearing on the following Petition. You are receiving this Notice because the Petitioner has reported that you own property that abuts the work that is being proposed. You and other members of the public are invited to attend and be heard at this Hearing.

Because of Governor Baker's and Mayor Curtatone's recent orders limiting the number of people that may gather in one place, **this meeting of the City Council will be conducted via remote participation, online in a webinar hosted on the GoToWebinar platform.**

You have two ways to be heard at this meeting:

1. To attend and be heard, enter the link exactly as it appears below into your internet browser any time before the meeting. You will then be asked to register for the meeting. After registering, you will receive an email with instructions to join the webinar when it starts.
2. If you are unable to attend but wish to be heard, you may send written comments by US mail to the City Clerk at the address below, or by email to cityclerk@somervillema.gov. Your comments must arrive no later than 12 Noon on the day of the Hearing, in order to be sure they are conveyed to the Council.

PETITION: Comcast seeks a Grant of Location to install 80 feet of conduit in Broadway, from Utility pole 220/1 to a point of pickup at the rear of 1244 Broadway.

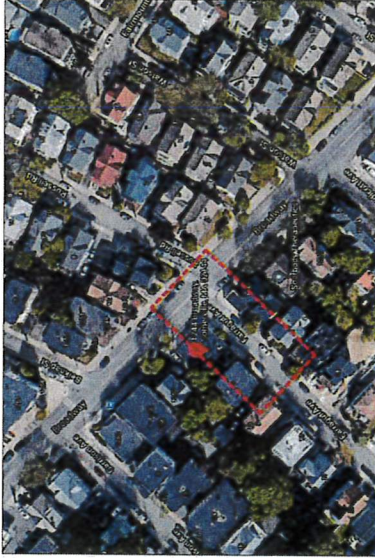
PLACE: <https://attendee.gotowebinar.com/register/1136885541805016335>

TIME: Thursday, April 22, 2021, at 7:00 PM.

PURPOSE: The work is necessary to provide or improve service to the surrounding area.



**PROPOSED CONDUIT INSTALLATION
AT
1244 BROADWAY
SOMERVILLE, MA**



LOCUS
N.T.S

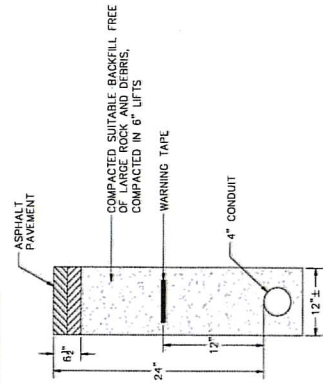
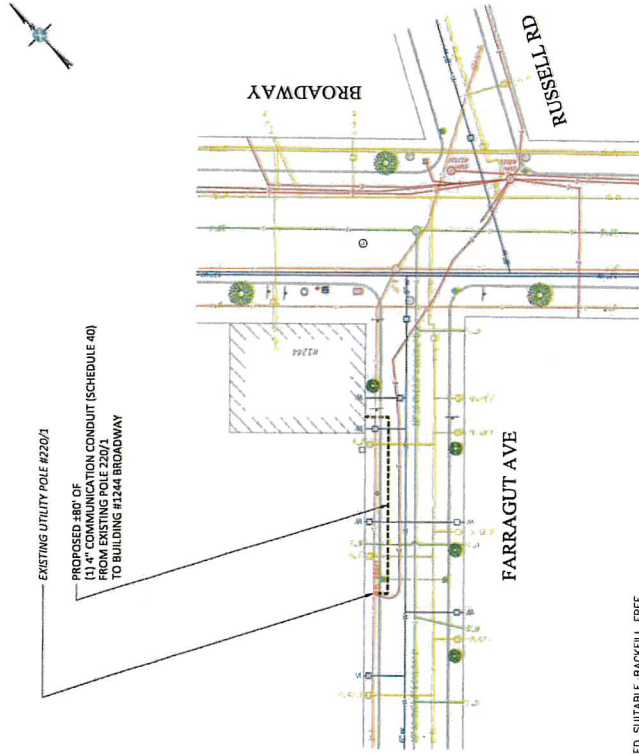
INDEX OF DRAWING	
SHEET NO.	DESCRIPTION
01	COVER SHEET
	PROPOSED CONDUIT INSTALLATION

AXIS
ENGINEERING GROUP
201 Boston Post Rd West - Suite 100
Marlborough, MA 01752
(774) 565-2324 www.axisgroup.com

GENERAL NOTES

1. THE LOCATIONS OF EXISTING UNDERGROUND UTILITIES ARE SHOWN IN AN APPROXIMATE MANNER ONLY AND HAVE NOT BEEN INDEPENDENTLY VERIFIED BY THE OWNER OR ITS REPRESENTATIVE. THE CONTRACTOR SHALL DETERMINE THE EXACT LOCATION OF ALL EXISTING UTILITIES BEFORE COMMENCING WORK, AND SHALL BE FULLY RESPONSIBLE FOR ANY AND ALL DAMAGES WHICH MIGHT BE OCCASIONED BY THE CONTRACTOR'S FAILURE TO EXACTLY LOCATE AND PRESERVE ANY AND ALL UNDERGROUND UTILITIES.
2. WHERE AN EXISTING UTILITY IS FOUND TO CONFLICT WITH THE PROPOSED WORK, THE LOCATION, ELEVATION AND SIZE OF THE UTILITY SHALL BE ACCURATELY DETERMINED WITHOUT DELAY BY THE CONTRACTOR, AND THE INFORMATION FURNISHED TO THE ENGINEER FOR RESOLUTION OF THE CONFLICT.
3. THE CONTRACTOR SHOULD MAINTAIN A SEPARATION OF 18 INCHES MIN. WHEN CROSSING EXISTING WATER FACILITIES.
4. THE CONTRACTOR SHALL MAKE ALL ARRANGEMENTS FOR THE ALTERATION AND ADJUSTMENT OF GAS, ELECTRIC, TELEPHONE AND ANY OTHER PRIVATE UTILITIES BY THE UTILITY COMPANY.
5. THE CONTRACTOR SHALL NOT DISTURB PUBLIC TREES AND SHRUBS.
6. AREAS OUTSIDE THE LIMITS OF PROPOSED WORK DISTURBED BY THE CONTRACTOR'S OPERATIONS SHALL BE RESTORED BY THE CONTRACTOR TO THEIR ORIGINAL CONDITION AT NO EXPENSE TO THE OWNER.
7. THE CONTRACTOR SHALL BE RESPONSIBLE FOR PLACING AND MAINTAINING TEMPORARY RESURFACING AND/OR PLANTING FOR ALL EXCAVATIONS IN PAVED STREETS AND SIDEWALKS UNTIL PERMANENT RESURFACING IS COMPLETE.
8. JOINTS BETWEEN NEW BITUMINOUS CONCRETE ROADWAY PAVEMENT AND SAW CUT EXISTING PAVEMENT SHALL BE SEALED WITH BITUMEN AND BACK SANDED.
9. THE CONTRACTOR SHALL PROTECT AND SUPPORT ALL EXISTING UTILITY LINES THAT BECOME EXPOSED DUE TO EXCAVATION REQUIRED TO INSTALL THE PROPOSED CONDUIT.
10. THE CONTRACTOR SHALL REPLACE ALL DISTURBED TRAFFIC SIGNAL LOOP DETECTORS TO GOOD WORKING CONDITION AS REQUIRED BY THE LATEST STANDARDS OF THE MUNICIPAL TRAFFIC DEPARTMENT.
11. ALL EXISTING STATE, COUNTY, CITY, AND TOWN LOCATION LINES AND PRIVATE PROPERTY LINES HAVE BEEN ESTABLISHED FROM AVAILABLE INFORMATION AND THEIR EXACT LOCATION ARE NOT GUARANTEED.
12. THE CONTRACTOR SHALL REPLACE ALL PAVEMENT MARKINGS IN THEIR ENTIRETY THAT HAVE BEEN DAMAGED BY TRENCH EXCAVATION OR OPERATIONS OF THE CONTRACTOR WITH SIMILAR COLOR AND SIZE THERMOPLASTIC MARKINGS.

- * - ITEM SHOWN ON UTILITY RECORDS, BUT NOT FOUND IN FIELD.
- - ITEM FOUND IN FIELD.
- o - ITEM NOT IN UTILITY RECORDS.



**ROADWAY PATCH AND DUCT BANK
INSTALLATION DETAIL**

N.T.S.

TRENCH DETAIL NOTES:

1. 24" MAXIMUM FROM TOP OF CONDUIT TO SURFACE.
2. 12" FROM TOP OF CONDUIT TO METALLIC WARNING TAPE PLACED ABOVE.
3. REPAIR SURFACE OF SIDEWALKS WITH SAME MATERIALS AS EXISTING.



LEGEND

X	ELECTRIC POLE	O	ELECTRIC POLE
Y	TELEPHONE POLE	□	TELEPHONE POLE
1	LAMP POLE	□	TELEPHONE POLE
2	TRAMP LIGHT	□	TELEPHONE POLE
3	TRAMP LIGHT	□	TELEPHONE POLE
4	TRAMP LIGHT	□	TELEPHONE POLE
5	TRAMP LIGHT	□	TELEPHONE POLE
6	TRAMP LIGHT	□	TELEPHONE POLE
7	TRAMP LIGHT	□	TELEPHONE POLE
8	TRAMP LIGHT	□	TELEPHONE POLE
9	TRAMP LIGHT	□	TELEPHONE POLE
10	TRAMP LIGHT	□	TELEPHONE POLE
11	TRAMP LIGHT	□	TELEPHONE POLE
12	TRAMP LIGHT	□	TELEPHONE POLE
13	TRAMP LIGHT	□	TELEPHONE POLE
14	TRAMP LIGHT	□	TELEPHONE POLE
15	TRAMP LIGHT	□	TELEPHONE POLE
16	TRAMP LIGHT	□	TELEPHONE POLE
17	TRAMP LIGHT	□	TELEPHONE POLE
18	TRAMP LIGHT	□	TELEPHONE POLE
19	TRAMP LIGHT	□	TELEPHONE POLE
20	TRAMP LIGHT	□	TELEPHONE POLE
21	TRAMP LIGHT	□	TELEPHONE POLE
22	TRAMP LIGHT	□	TELEPHONE POLE
23	TRAMP LIGHT	□	TELEPHONE POLE
24	TRAMP LIGHT	□	TELEPHONE POLE
25	TRAMP LIGHT	□	TELEPHONE POLE
26	TRAMP LIGHT	□	TELEPHONE POLE
27	TRAMP LIGHT	□	TELEPHONE POLE
28	TRAMP LIGHT	□	TELEPHONE POLE
29	TRAMP LIGHT	□	TELEPHONE POLE
30	TRAMP LIGHT	□	TELEPHONE POLE
31	TRAMP LIGHT	□	TELEPHONE POLE
32	TRAMP LIGHT	□	TELEPHONE POLE
33	TRAMP LIGHT	□	TELEPHONE POLE
34	TRAMP LIGHT	□	TELEPHONE POLE
35	TRAMP LIGHT	□	TELEPHONE POLE
36	TRAMP LIGHT	□	TELEPHONE POLE
37	TRAMP LIGHT	□	TELEPHONE POLE
38	TRAMP LIGHT	□	TELEPHONE POLE
39	TRAMP LIGHT	□	TELEPHONE POLE
40	TRAMP LIGHT	□	TELEPHONE POLE
41	TRAMP LIGHT	□	TELEPHONE POLE
42	TRAMP LIGHT	□	TELEPHONE POLE
43	TRAMP LIGHT	□	TELEPHONE POLE
44	TRAMP LIGHT	□	TELEPHONE POLE
45	TRAMP LIGHT	□	TELEPHONE POLE
46	TRAMP LIGHT	□	TELEPHONE POLE
47	TRAMP LIGHT	□	TELEPHONE POLE
48	TRAMP LIGHT	□	TELEPHONE POLE
49	TRAMP LIGHT	□	TELEPHONE POLE
50	TRAMP LIGHT	□	TELEPHONE POLE
51	TRAMP LIGHT	□	TELEPHONE POLE
52	TRAMP LIGHT	□	TELEPHONE POLE
53	TRAMP LIGHT	□	TELEPHONE POLE
54	TRAMP LIGHT	□	TELEPHONE POLE
55	TRAMP LIGHT	□	TELEPHONE POLE
56	TRAMP LIGHT	□	TELEPHONE POLE
57	TRAMP LIGHT	□	TELEPHONE POLE
58	TRAMP LIGHT	□	TELEPHONE POLE
59	TRAMP LIGHT	□	TELEPHONE POLE
60	TRAMP LIGHT	□	TELEPHONE POLE
61	TRAMP LIGHT	□	TELEPHONE POLE
62	TRAMP LIGHT	□	TELEPHONE POLE
63	TRAMP LIGHT	□	TELEPHONE POLE
64	TRAMP LIGHT	□	TELEPHONE POLE
65	TRAMP LIGHT	□	TELEPHONE POLE
66	TRAMP LIGHT	□	TELEPHONE POLE
67	TRAMP LIGHT	□	TELEPHONE POLE
68	TRAMP LIGHT	□	TELEPHONE POLE
69	TRAMP LIGHT	□	TELEPHONE POLE
70	TRAMP LIGHT	□	TELEPHONE POLE
71	TRAMP LIGHT	□	TELEPHONE POLE
72	TRAMP LIGHT	□	TELEPHONE POLE
73	TRAMP LIGHT	□	TELEPHONE POLE
74	TRAMP LIGHT	□	TELEPHONE POLE
75	TRAMP LIGHT	□	TELEPHONE POLE
76	TRAMP LIGHT	□	TELEPHONE POLE
77	TRAMP LIGHT	□	TELEPHONE POLE
78	TRAMP LIGHT	□	TELEPHONE POLE
79	TRAMP LIGHT	□	TELEPHONE POLE
80	TRAMP LIGHT	□	TELEPHONE POLE
81	TRAMP LIGHT	□	TELEPHONE POLE
82	TRAMP LIGHT	□	TELEPHONE POLE
83	TRAMP LIGHT	□	TELEPHONE POLE
84	TRAMP LIGHT	□	TELEPHONE POLE
85	TRAMP LIGHT	□	TELEPHONE POLE
86	TRAMP LIGHT	□	TELEPHONE POLE
87	TRAMP LIGHT	□	TELEPHONE POLE
88	TRAMP LIGHT	□	TELEPHONE POLE
89	TRAMP LIGHT	□	TELEPHONE POLE
90	TRAMP LIGHT	□	TELEPHONE POLE
91	TRAMP LIGHT	□	TELEPHONE POLE
92	TRAMP LIGHT	□	TELEPHONE POLE
93	TRAMP LIGHT	□	TELEPHONE POLE
94	TRAMP LIGHT	□	TELEPHONE POLE
95	TRAMP LIGHT	□	TELEPHONE POLE
96	TRAMP LIGHT	□	TELEPHONE POLE
97	TRAMP LIGHT	□	TELEPHONE POLE
98	TRAMP LIGHT	□	TELEPHONE POLE
99	TRAMP LIGHT	□	TELEPHONE POLE
100	TRAMP LIGHT	□	TELEPHONE POLE

NOTE:
EXISTING UTILITIES SHOWN ARE APPROXIMATE AND CONTRACTOR SHALL VERIFY THE LOCATION OF ALL PUBLIC AND PRIVATE UTILITIES PRIOR TO BEGINNING ANY EXCAVATION.

CALL BEFORE YOU DIG
72 HOURS NOTICE REQUIRED
800-4-A-DAWN

PREPARED BY: **AXIS ENGINEERS GROUP**

FOR: **Comcast**

DATE:	
REVISION:	
NO.:	
DESCRIPTION:	
DATE:	

PROPOSED CONDUIT INSTALLATION

DESIGNED BY:	AXIS ENGINEERING	PROJECT NO.:	15P1
DRAWN BY:	W. H.	SCALE:	1" = 20'
CHECKED BY:	W. H.		
DATE:	10/20/2011		



**TRAFFIC MANAGEMENT PLAN
AT
1244 BROADWAY
SOMERVILLE, MA**



LOCUS
N.T.S.

INDEX OF DRAWING

SHEET NO.	DESCRIPTION
01	COVER SHEET
02	TRAFFIC CONTROL 01
	TRAFFIC CONTROL 02

AXIS
ENGINEERING GROUP
201 Boston Post Rd West - Suite 100
Marlborough, MA 01752
(774) 555-2324 www.axisgroup.com

TRAFFIC CONTROL LEGEND	
	TRAFFIC CONTROL
	WORK AREA
	POLICE OFFICER
	UTILITY WORK SIGN

LEGEND	
1	STREET LIGHT
2	STREET LIGHT
3	STREET LIGHT
4	STREET LIGHT
5	STREET LIGHT
6	STREET LIGHT
7	STREET LIGHT
8	STREET LIGHT
9	STREET LIGHT
10	STREET LIGHT
11	STREET LIGHT
12	STREET LIGHT
13	STREET LIGHT
14	STREET LIGHT
15	STREET LIGHT
16	STREET LIGHT
17	STREET LIGHT
18	STREET LIGHT
19	STREET LIGHT
20	STREET LIGHT
21	STREET LIGHT
22	STREET LIGHT
23	STREET LIGHT
24	STREET LIGHT
25	STREET LIGHT
26	STREET LIGHT
27	STREET LIGHT
28	STREET LIGHT
29	STREET LIGHT
30	STREET LIGHT
31	STREET LIGHT
32	STREET LIGHT
33	STREET LIGHT
34	STREET LIGHT
35	STREET LIGHT
36	STREET LIGHT
37	STREET LIGHT
38	STREET LIGHT
39	STREET LIGHT
40	STREET LIGHT
41	STREET LIGHT
42	STREET LIGHT
43	STREET LIGHT
44	STREET LIGHT
45	STREET LIGHT
46	STREET LIGHT
47	STREET LIGHT
48	STREET LIGHT
49	STREET LIGHT
50	STREET LIGHT
51	STREET LIGHT
52	STREET LIGHT
53	STREET LIGHT
54	STREET LIGHT
55	STREET LIGHT
56	STREET LIGHT
57	STREET LIGHT
58	STREET LIGHT
59	STREET LIGHT
60	STREET LIGHT
61	STREET LIGHT
62	STREET LIGHT
63	STREET LIGHT
64	STREET LIGHT
65	STREET LIGHT
66	STREET LIGHT
67	STREET LIGHT
68	STREET LIGHT
69	STREET LIGHT
70	STREET LIGHT
71	STREET LIGHT
72	STREET LIGHT
73	STREET LIGHT
74	STREET LIGHT
75	STREET LIGHT
76	STREET LIGHT
77	STREET LIGHT
78	STREET LIGHT
79	STREET LIGHT
80	STREET LIGHT
81	STREET LIGHT
82	STREET LIGHT
83	STREET LIGHT
84	STREET LIGHT
85	STREET LIGHT
86	STREET LIGHT
87	STREET LIGHT
88	STREET LIGHT
89	STREET LIGHT
90	STREET LIGHT
91	STREET LIGHT
92	STREET LIGHT
93	STREET LIGHT
94	STREET LIGHT
95	STREET LIGHT
96	STREET LIGHT
97	STREET LIGHT
98	STREET LIGHT
99	STREET LIGHT
100	STREET LIGHT

EXISTING UTILITIES SHOWN ARE APPROXIMATE AND NOT WARRANTED TO BE CORRECT. THE CONTRACTOR SHALL VERIFY THE LOCATION OF ALL PUBLIC AND PRIVATE UTILITIES PRIOR TO BEGINNING ANY EXCAVATION.

CALL BEFORE YOU DIG
1-800-4-A-ROOT
OR
1-800-485-6141

PREPARED BY: **AXIS** ENGINEERING GROUP

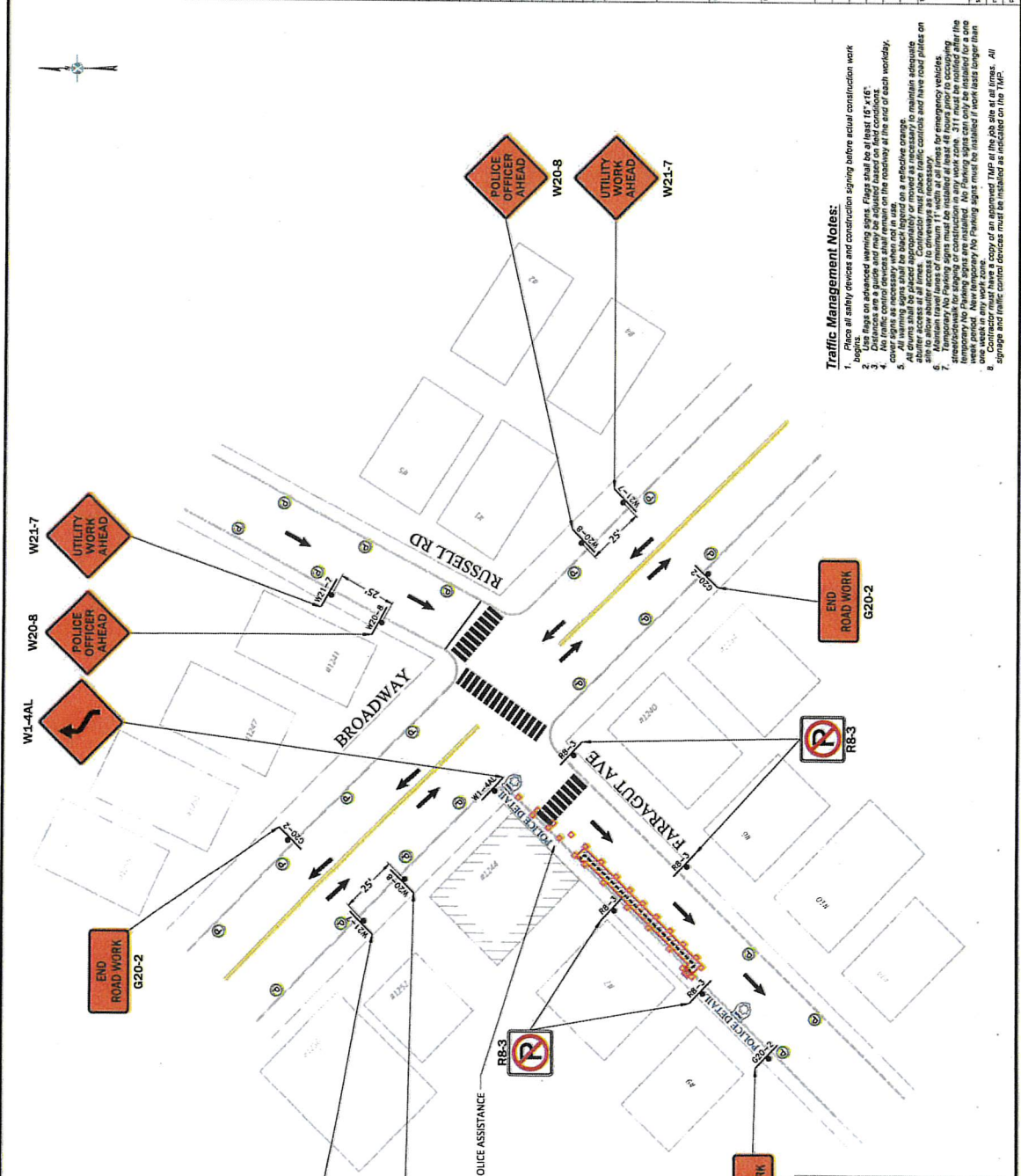
DATE: _____

PROJECT NO: _____

DATE: _____

SCALE: 1" = 20'

DATE: 03/23/2021



- Traffic Management Notes:**
1. Install safety devices and construction signing before actual construction work begins.
 2. Use flags on advanced warning signs. Flags shall be at least 16" x 16".
 3. No traffic control devices shall remain on the roadway at the end of each workday.
 4. No traffic control devices shall remain on the roadway at the end of each workday.
 5. All drums shall be placed appropriately or moved as necessary to maintain adequate clearances at all times. Contractor must place traffic controls and have road plates on site at all times.
 6. Minimum travel lanes of minimum 11' width at all times for emergency vehicles.
 7. Maintain travel lanes of minimum 11' width at all times for emergency vehicles.
 8. Temporary No Parking signs are established. No parking signs can only be installed for a one week on any work zone.
 9. Contractor must have a copy of an approved TMP at the job site at all times. All signage and traffic control devices must be installed as indicated on this TMP.

DRAFT PLAN 03-23-2021 -
2 SHEETS REVIEWED BY
THE COMCAST PROJECT
COORDINATOR AND UTILITY
CONTRACTOR AND
APPROVED TO FINALIZE

SIGNATURE OF PC

PRINT NAME

DATE

SIGNATURE OF UTILITY CONTRACTOR

PRINT NAME

Abutting Properties for
1244 BROADWAY SOMERVILLE, MA
6/ D/ 4/ /
(100 Feet)

Location:
6/ D/ 3/ /
1252 BROADWAY
Owner:
SILVA ERIC J
1252 BROADWAY
SOMERVILLE, MA 02144

Location:
6/ D/ 5/ 1/
7 FARRAGUT AVE #1
Owner:
NIESWAND KATHERINE M
S/O ROBINETT NINA & MATTHEW
7 FARRAGUT AVE #1
SOMERVILLE, MA 02144

Location:
6/ D/ 5/ 2/
7 FARRAGUT AVE #2
Owner:
PROVENZANO CHRISTOPHER
95 LIBERTY AVE
SOMERVILLE, MA 02144

Location:
6/ D/ 5/ 3/
7 FARRAGUT AVE #3
Owner:
ROSEDALE LYNN M & MARK J
S/O ROSEDALE MARK & LYNN
TRUSTEES
7 FARRAGUT AVE #3
SOMERVILLE, MA 02144