

2 UTILITIES
AND SAWS



CITY OF SOMERVILLE, MASSACHUSETTS
CITY CLERK'S OFFICE

JOSEPH A. CURTATONE
MAYOR

JOHN J. LONG
CITY CLERK

February 29, 2016

NOTICE

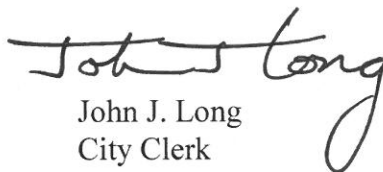
You are hereby notified that the Board of Aldermen will hold a Public Hearing on the following Petition. You are receiving this Notice because City records indicate that you own property that abuts the work that is being proposed. You and other members of the public are invited to attend and be heard at this Hearing.

PETITION: Eversource (NStar Electric) is applying for a Grant of Location to install a new manhole in the Elm Street sidewalk at 240 Elm Street, and 50 feet of conduit in Elm Street running from Manhole #18935 to the new manhole, all approximately 60 feet southeast of Chester Street.

PLACE: Aldermanic Chambers, 2nd Floor, City Hall, 93 Highland Avenue, Somerville.

TIME: Thursday, March 10, 2016, at 7:00 PM.

PURPOSE: The work is necessary to supply service to 240 Elm Street.


John J. Long
City Clerk

W.O. #2098971



CITY OF SOMERVILLE, MASSACHUSETTS
CITY CLERK'S OFFICE

JOSEPH A. CURTATONE
MAYOR

JOHN J. LONG
CITY CLERK

February 25, 2016

To Whom It May Concern:

Eversource has requested, as WO #2098971, permission for a grant of location to install 50 feet of conduit in Elm Street and a new Manhole #30200 in the Elm Street sidewalk, all approximately 60 feet southeast of Chester Street. The work is necessary to supply service to 240 Elm Street.

The DPW has on January 27, 2016, given notice that interim approval is granted. Eversource has prepared the appropriate documents for a Public Hearing before a meeting of the Board of Aldermen at a future date. The signatures below will indicate interim approval by the Board of Aldermen.

Sincerely,

John J. Long
City Clerk

Approved by President:

President William A. White, Jr.

Approved by Committee on Licenses and Permits:

Chairman Dennis M. Sullivan

Approved by Ward Alderman:

Alderman Lance L. Davis



2016 FEB 24 A 9:01

CITY OF SOMERVILLE, MASSACHUSETTS

CITY CLERK'S OFFICE
SOMERVILLE, MA

DEPARTMENT OF PUBLIC WORKS

JOSEPH A. CURTATONE
MAYOR

STAN KOTY
Commissioner

RICK WILLETTE
Director of Operations

January 27, 2016

The Honorable Board of Aldermen
City Hall
93 Highland Avenue
Somerville MA, 02143

RE: Grant of Location
NSTAR Electric
240 Elm Street
W.O. #2098971

Dear Board Members:

Preliminary approval is recommended for the petition and plan of Eversource to install fifty (50) feet of conduit (4 – 4" PVC pipes) in Elm Street and a concrete manhole (mh 30200) with the dimensions of 6.5' x 12.5' x 8' in the Elm Street sidewalk; public ways of Somerville, MA, approximately sixty (60) feet southeast of Chester Street.

This recommendation is made with reference to NSTAR Electric's letter of January 14, 2016 and plan of January 11, 2016 upon stipulation that the Grant of Location is subject to: a reservation of rescission by the Board of Aldermen; indemnification of the City for all liability arising from said Grant; all permit procedures, conditions and approvals of municipal utilities; protection of existing infrastructure; and complete surface repair, restoration and maintenance and pending the winter moratorium being removed by the Commissioner. A public hearing will be required.

This work is necessary to supply service to 240 Elm Street.

Respectfully requested,
Department of Public Works



Stan Koty, Commissioner

EVERSOURCE

101 Linwood Street
Somerville, MA 02143

2016 JAN 22 P 12: 04

CITY CLERK'S OFFICE
SOMERVILLE, MA

January 14, 2016

John Long
Office of the City Clerk
93 Highland Avenue
Somerville, MA 02143

Re: 240 Elm Street
Somerville, MA
W.O. #2098971

Dear Sir:

The NSTAR Electric Company d/b/a Eversource Energy, respectfully request a Grant of Location to install approximately 50 feet of conduit in Elm Street.

This work is necessary to supply service to 240 Elm Street.

Thank you for your prompt attention to this request. If you have any questions, please call Jacqueline Duffy, Right of Way Agent, 617-629-3204.

Very truly yours,



Richard M. Schifone,
Supervisor

RMS/cf

cc: Highway Department
Engineering Department

**PETITION OF NSTAR ELECTRIC COMPANY d/b/a EVERSOURCE ENERGY
FOR LOCATION FOR CONDUITS AND MANHOLES**

To the Board of Aldermen City of Somerville, Massachusetts

Respectfully represents NSTAR ELECTRIC COMPANY d/b/a Eversource a company incorporated for the transmission of electricity for lighting, heating or power, that it desires to construct a line for such transmission under the public way or ways hereinafter specified.

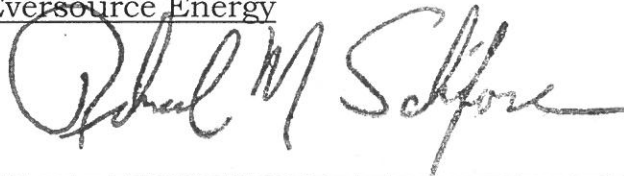
WHEREFORE, your petitioner prays that, after due notice and hearing as provided by law, the Board may by Order grant to your petitioner permission to construct, and a location for, such a line of conduits and manholes with the necessary wires and cables therein, said conduits and manholes to be located substantially as shown on the plan made by A. DeBenedictis dated January 11, 2016 herewith, under the following public way or ways of said City:

**Elm Street - Westerly from manhole 18935 approximately
60 feet southeast of Chester Street a distance of
about 50 feet - conduit.**

Install one manhole (mh30200) - 6.5 x 12.5 x 8 deep

W.O. #2098971

NSTAR ELECTRIC COMPANY
d/b/a Eversource Energy



By: _____

Richard M. Schifone, Supervisor
Rights and Permits

Dated this 14th day of January, 2016

City of Somerville, Massachusetts

Received and filed _____, 2016

ORDER FOR LOCATION FOR CONDUITS AND MANHOLES

City of Somerville Massachusetts, January 14, 2016

In Board of Aldermen

WHEREAS, NSTAR ELECTRIC COMPANY d/b/a Eversource Energy has petitioned for permission to construct a line for the transmission of electricity for lighting, heating, or power under the public way or ways of the City hereinafter specified, and notice has been given and a hearing held on said petition as provided by law.

It is ORDERED that NSTAR ELECTRIC COMPANY d/b/a Eversource Energy be and hereby is granted permission to construct, and a location for, such a line of conduits and manholes with the necessary wires and cables therein under the following public way or ways of said City:

Elm Street – Westerly from manhole 18935 approximately 60 feet southeast of Chester Street a distance of about 50 feet – conduit.

Install one manhole (mh30200) – 6.5 x 12.5 x 8 deep

W.O. #2098971

All construction work under this Order shall be in accordance with the following conditions:

1. Conduits and manholes shall be located as shown on made by A. DeBenedictis plan dated **January 11, 2016.**
2. Said Company shall comply with the requirements of existing ordinances and such as may hereafter be adopted governing the construction and maintenance of conduits and manholes.
3. All work shall be done to satisfaction of the City Council or such officer or officers as it may appoint to supervise the work.

A True Record.

Attest: _____
City Clerk

Approved _____ 2016

Mayor

CERTIFICATE

I hereby certify that the foregoing Order was adopted after due notice and public hearing as prescribed by Section 22 of Chapter 166 of the General Laws (Ter. Ed.) and any additions thereto or amendments thereof, to wit:--after written notice of the time and place of the hearing mailed at least seven days prior to the date of the hearing by the City Clerk to all owners of real estate abutting upon that part of the way or ways upon, along or across which the line is to be constructed under said Order, as determined by the last preceding assessment for taxation and a public hearing held on the _____ day of _____ 2016.

City Clerk

CERTIFICATE

I hereby certify that the foregoing are true copies of the Order Board of Aldermen of the City of Somerville Massachusetts duly adopted on the _____ day of _____, 2016 and recorded with the records of location Orders of Said City. Book _____ Page _____ and of the certificate of notice of hearing thereon required by Section 22 of Chapter 166 of the General Laws (Ter. Ed.), and any additions thereto or amendments thereof, as the same appear of record.

Attest:

ORDER FOR LOCATION FOR CONDUITS AND MANHOLES

City of Somerville Massachusetts, January 14, 2016

In Board of Aldermen

WHEREAS, NSTAR ELECTRIC COMPANY d/b/a Eversource Energy has petitioned for permission to construct a line for the transmission of electricity for lighting, heating, or power under the public way or ways of the City hereinafter specified, and notice has been given and a hearing held on said petition as provided by law.

It is ORDERED that NSTAR ELECTRIC COMPANY d/b/a Eversource Energy be and hereby is granted permission to construct, and a location for, such a line of conduits and manholes with the necessary wires and cables therein under the following public way or ways of said City:

Elm Street – Westerly from manhole 18935 approximately 60 feet southeast of Chester Street a distance of about 50 feet – conduit.

Install one manhole (mh30200) – 6.5 x 12.5 x 8 deep

W.O. #2098971

All construction work under this Order shall be in accordance with the following conditions:

1. Conduits and manholes shall be located as shown on made by A. DeBenedictis plan dated **January 11, 2016.**
2. Said Company shall comply with the requirements of existing ordinances and such as may hereafter be adopted governing the construction and maintenance of conduits and manholes.
3. All work shall be done to satisfaction of the City Council or such officer or officers as it may appoint to supervise the work.

A True Record. Attest: _____ City Clerk
Approved _____ 2016

Mayor
CERTIFICATE

I hereby certify that the foregoing Order was adopted after due notice and public hearing as prescribed by Section 22 of Chapter 166 of the General Laws (Ter. Ed.) and any additions thereto or amendments thereof, to wit:--after written notice of the time and place of the hearing mailed at least seven days prior to the date of the hearing by the City Clerk to all owners of real estate abutting upon that part of the way or ways upon, along or across which the line is to be constructed under said Order, as determined by the last preceding assessment for taxation and a public hearing held on the _____ day of _____ 2016.

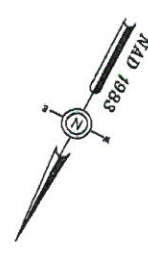
City Clerk

CERTIFICATE

I hereby certify that the foregoing are true copies of the Order Board of Aldermen of the City of Somerville Massachusetts duly adopted on the _____ day of _____, 2016 and recorded with the records of location Orders of Said City. Book _____ Page _____ and of the certificate of notice of hearing thereon required by Section 22 of Chapter 166 of the General Laws (Ter. Ed.), and any additions thereto or amendments thereof, as the same appear of record.

Attest:

S:\SHARED\CONTRACTS\PARCELS\500A\182518.dwg



INSTALL 4 - 4" PVC PIPES
TYPE EB IN CONCRETE
SECTION 2 FIG. 4

21/ E/ 11
233 ELM ST
N/F
DANA MYER R & ALAN G
DANA TRUSTEES
DANA FAMILY REALTY TRUST

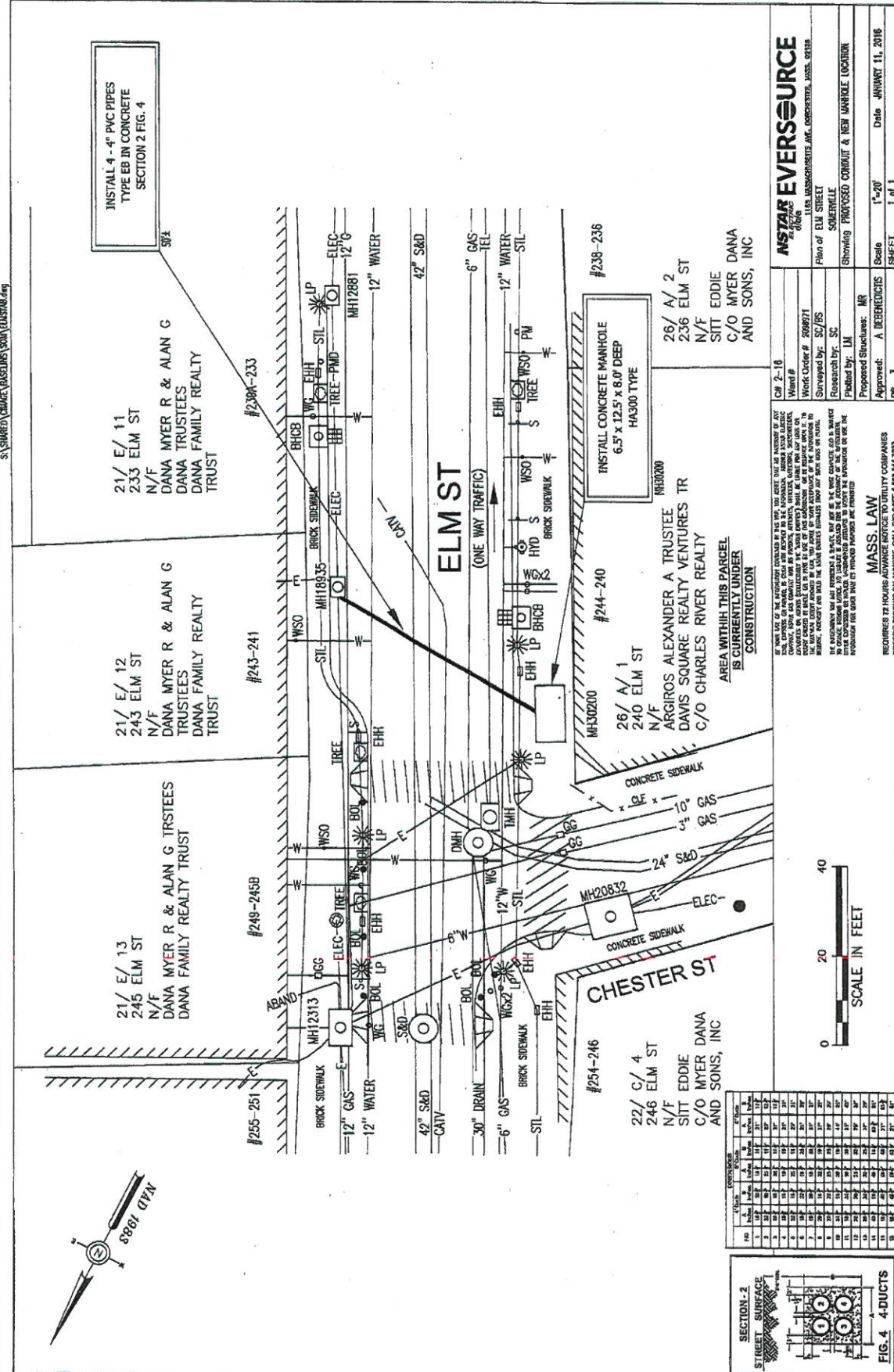
21/ E/ 12
243 ELM ST
N/F
DANA MYER R & ALAN G
DANA TRUSTEES
DANA FAMILY REALTY TRUST

21/ E/ 13
245 ELM ST
N/F
DANA MYER R & ALAN G TRSTEES
DANA FAMILY REALTY TRUST

22/ C/ 4
246 ELM ST
N/F
EDDIE DANA
C/O MYER DANA
AND SONS, INC

26/ A/ 1
240 ELM ST
N/F
ARGIROS ALEXANDER A TRUSTEE
DAVIS SQUARE REALTY VENTURES TR
C/O CHARLES RIVER REALTY

26/ A/ 2
236 ELM ST
N/F
SITT EDDIE
C/O MYER DANA
AND SONS, INC



ASTAR EVERSOURCE
UTILITY ENGINEERING
1105 MASSACHUSETTS AVE. CORPORATION, SUITE 201B
SOMERVILLE, MASSACHUSETTS 01906
Phone: 617.261.1111
Fax: 617.261.1112
www.astar-engineering.com

Project: 21/ ELM ST
Drawn by: SC
Checked by: LM
Proposed Structures: MR
Approved: A. DEBENEDICTIS
Scale: 1"=20'
Date: JANUARY 11, 2016
SHEET 1 of 1

Col 2-16
Work Order # 206871
Surveyed by: SC/BS
Reviewed by: SC
Printed by: LM
Proposed Structures: MR
Approved: A. DEBENEDICTIS
Scale: 1"=20'
Date: JANUARY 11, 2016
SHEET 1 of 1

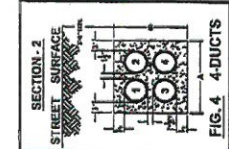
IF YOU USE OF THE INFORMATION CONTAINED HEREIN FOR ANY PURPOSE OTHER THAN THAT AUTHORIZED BY THE ENGINEER, YOU WILL BE RESPONSIBLE FOR ANY AND ALL CONSEQUENCES THEREOF. THE ENGINEER ASSUMES NO LIABILITY FOR ANY DAMAGE TO PERSONS, PROPERTY, OR THE ENVIRONMENT, INCLUDING CONSEQUENTIAL DAMAGES, ARISING FROM THE USE OF THIS INFORMATION, WHETHER SUCH DAMAGE IS CAUSED BY NEGLIGENCE OR OTHERWISE. THE ENGINEER'S LIABILITY IS LIMITED TO THE PROFESSIONAL SERVICES PROVIDED BY THE ENGINEER AND DOES NOT INCLUDE ANY AND ALL CONSEQUENCES OF THE USE OF THIS INFORMATION. THE ENGINEER'S LIABILITY IS LIMITED TO THE PROFESSIONAL SERVICES PROVIDED BY THE ENGINEER AND DOES NOT INCLUDE ANY AND ALL CONSEQUENCES OF THE USE OF THIS INFORMATION.

MASS LAW
REGULATED BY HOUSE BILL 1045, CHAPTER 270A, SECTION 27B
BEFORE DESIGNING BY ANYONE, CALL 603-895-1400/541-7233



CONDUITS

NO.	TYPE	SIZE	DEPTH	LENGTH	DATE
1	A	4"	18"	100'	11/15/15
2	A	4"	18"	100'	11/15/15
3	A	4"	18"	100'	11/15/15
4	A	4"	18"	100'	11/15/15
5	A	4"	18"	100'	11/15/15
6	A	4"	18"	100'	11/15/15
7	A	4"	18"	100'	11/15/15
8	A	4"	18"	100'	11/15/15
9	A	4"	18"	100'	11/15/15
10	A	4"	18"	100'	11/15/15
11	A	4"	18"	100'	11/15/15
12	A	4"	18"	100'	11/15/15
13	A	4"	18"	100'	11/15/15
14	A	4"	18"	100'	11/15/15
15	A	4"	18"	100'	11/15/15
16	A	4"	18"	100'	11/15/15
17	A	4"	18"	100'	11/15/15
18	A	4"	18"	100'	11/15/15
19	A	4"	18"	100'	11/15/15
20	A	4"	18"	100'	11/15/15
21	A	4"	18"	100'	11/15/15
22	A	4"	18"	100'	11/15/15
23	A	4"	18"	100'	11/15/15
24	A	4"	18"	100'	11/15/15
25	A	4"	18"	100'	11/15/15
26	A	4"	18"	100'	11/15/15
27	A	4"	18"	100'	11/15/15
28	A	4"	18"	100'	11/15/15
29	A	4"	18"	100'	11/15/15
30	A	4"	18"	100'	11/15/15
31	A	4"	18"	100'	11/15/15
32	A	4"	18"	100'	11/15/15
33	A	4"	18"	100'	11/15/15
34	A	4"	18"	100'	11/15/15
35	A	4"	18"	100'	11/15/15
36	A	4"	18"	100'	11/15/15
37	A	4"	18"	100'	11/15/15
38	A	4"	18"	100'	11/15/15
39	A	4"	18"	100'	11/15/15
40	A	4"	18"	100'	11/15/15
41	A	4"	18"	100'	11/15/15
42	A	4"	18"	100'	11/15/15
43	A	4"	18"	100'	11/15/15
44	A	4"	18"	100'	11/15/15
45	A	4"	18"	100'	11/15/15
46	A	4"	18"	100'	11/15/15
47	A	4"	18"	100'	11/15/15
48	A	4"	18"	100'	11/15/15
49	A	4"	18"	100'	11/15/15
50	A	4"	18"	100'	11/15/15



WO # 2098971
ELM STREET
SOMERVILLE, 02144

22/ C/ 4
246 ELM ST
N/F

SITT EDDIE
C/O MYER DANA AND SONS, INC
1340 CENTRE STREET SUITE 101
NEWTON, MA 02459

21/ E/ 13
245 ELM ST
N/F

DANA MYER R & ALAN G TRSTEEES
DANA FAMILY REALTY TRUST
1340 CENTRE ST SUITE 101
NEWTON, MA 02459

21/ E/ 12
243 ELM ST
N/F

DANA MYER R & ALAN G TRUSTEES
DANA FAMILY REALTY TRUST
1340 CENTRE ST SUITE 101
NEWTON, MA 02459

26/ A/ 1
240 ELM ST
N/F

ARGIROS ALEXANDER A TRUSTEE
DAVIS SQUARE REALTY VENTURES TR
C/O CHARLES RIVER REALTY
PO BOX 262
NORWOOD, MA 02062

26/ A/ 2
236 ELM ST
N/F

SITT EDDIE
C/O MYER DANA AND SONS, INC
1340 CENTRE ST SUITE 101
NEWTON, MA 02459

21/ F/ 11
233 ELM ST
N/F

DANA MYER R & ALAN G DANA
TRUSTEES
DANA FAMILY REALTY TRUST
1340 CENTRE ST SUITE 101
NEWTON, MA 02459

21/ A/ 3
230 ELM ST
N/F

HANCOCK SOMERVILLE LLC
C/O ADDONIZIO JR ANTHONY
1200 SALEM ST #119
LYNNFIELD, MA 01940-1572



Eddie Sitt
c/o Myer Dana & Sons, Inc.
1340 Centre Street, Suite 101
Newton, MA 02459

Dana R. & Alan G. Myer Trustees
Dana Family Realty Trust
1340 Centre Street, Suite 101
Newton, MA 02459

Dana R. & Alan G. Myer Trustees
Dana Family Realty Trust
1340 Centre Street, Suite 101
Newton, MA 02459

Alexander A. Argiros, Trustee
Davis Square Realty Ventures Tr
c/o Charles River Realty
P.O. Box 262
Norwood, MA 02062

Eddie Sitt
c/o Myer Dana & Sons, Inc.
1340 Centre Street, Suite 101
Newton, MA 02459

Dana R. & Alan G. Myer Trustees
Dana Family Realty Trust
1340 Centre Street, Suite 101
Newton, MA 02459

Hancock Somerville, LLC
c/o Anthony Addonizio, Jr.
1200 Salem Street #119
Lynnfield, MA 01940-1572