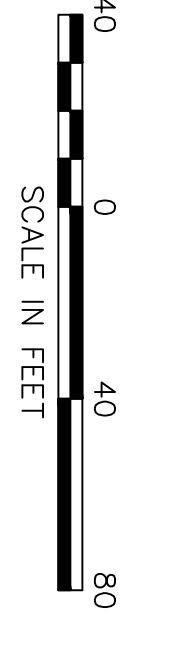
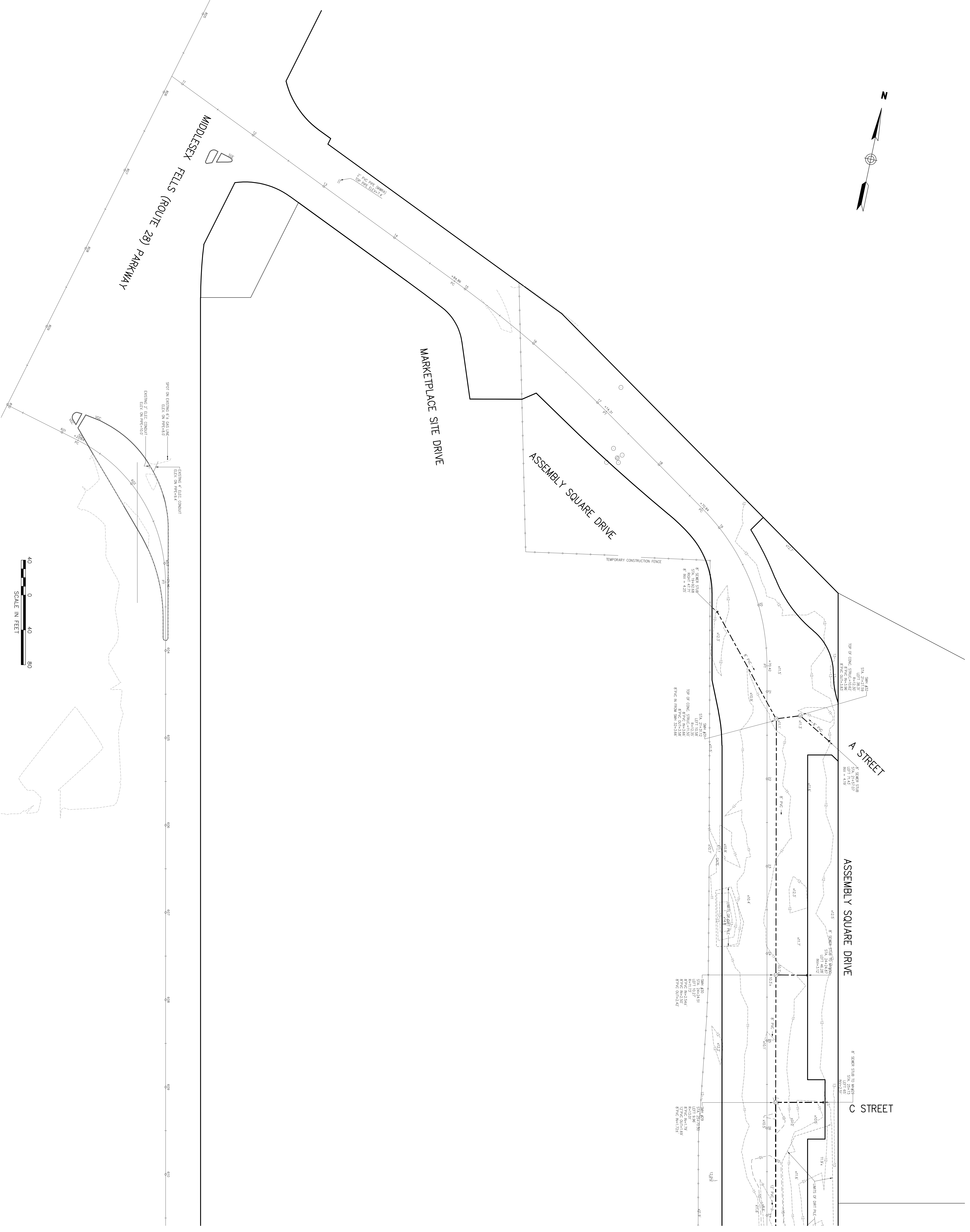
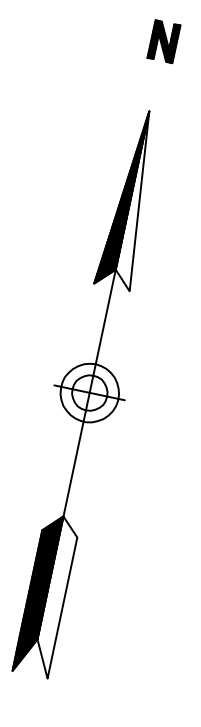




**Vannesse Hangen Brustlin, Inc.**  
 Transportation  
 Land Development  
 Environmental Services  
 101 Walnut Street, P.O. Box 9151  
 Watertown, Massachusetts 02471-9151  
 617 924 1770 • FAX 617 924 2286



**Legend**

- X, X' ELEVATION NOT OBTAINABLE
- CB
- SMH
- SM
- SMH
- MANHOLE
- WATER GATE
- GAS GATE
- LIGHT POLE
- UTILITY POLE
- UTILITY POLE
- MONITORING WELL
- EDGE OF PAVEMENT
- VERTICAL GRANITE CURB
- SLOPED GRANITE EDGE
- BITUMINOUS BERM
- GRAND LINK FENCE
- ORANGE LINE
- SEWER LINE
- ORANGE AND ELECTRIC
- TELEPHONE LINE
- GAS LINE
- WATER LINE
- POLE LINES

NO.	DESCRIPTION	DATE	BY
1	Initial plan based on sewer	5/7/10	JTB
2	Revised plan	10/1/10	JTB
3	Final plan	1/25/10	JTB

2-D0 created by: [ ]  
 2-D0 checked by: [ ]  
 Project Title: **Assembly Square Drive**  
 Date: **January 25, 2010**

**Somerville, Massachusetts**

**Sewer As-Built  
 Plan of Land**

**SV-1**

1 3  
10923.00