



CITY OF SOMERVILLE

Commonwealth of Massachusetts

93 Highland Avenue

Somerville, MA 02143

(617) 625-6600

BUSINESS LICENSE APPLICATION - Grant of Location

File #: 22-004347

License #: BL22-000026

Address: Near 75 Mystic Avenue

Licensee: Glenn Mauk Cornerstone Energy

DBA Name: Eversource Energy

Business Ownership Type: Corporation

Legal Name of Entity: NSTAR Electric Company d/b/a Eversource Energy

Owners/Officers: Craig A Hallstrom, Richard J Morrison, John M Moreira,

License Information:

Grant of location issued to: NSTAR Electric Company d/b/a Eversource Energy

Describe the reason for the work, and the intended beneficiaries: Unforeseen existing underground utilities prevented Eversource from constructing the circuit duct bank along the path approved under Grant of Location Order License # BL21-000056 issued on or about June 10, 2021 recorded with Grant of Location Orders Docket #212027 and Book #18, Page 217 which modified Order for Grant of Location approved on October 26, 2017 Docket #204246 and recorded with the records of Grant of Location Orders of the City of Somerville in Book XVIII, Page 543. The current redesign involves approximately 880 lf of new subsurface 115 kilovolt transmission electric pipe type cable (PTC) circuit duct bank and 170 lf of communications duct bank. The PTC is comprised of three conductor cables inside an eight-inch ductile steel pipe. The communication/signal wires will be contained inside two (2) four-inch PVC conduits. The intended beneficiaries are the citizens of the City of Somerville and the surrounding communities.

Insert here the same detailed description of the work as appears in the attached Grant of Location Order: Installation, operation and maintenance of a new subsurface 115 kilovolt transmission electric pipe type cable (PTC) circuit with appurtenant communication/signal handholes and wires beneath Mystic Avenue (approximately 880 linear feet PTC and 170 lf of separate communications conduit). The PTC is comprised of three conductor cables inside an eight-inch ductile steel pipe. The communication/signal wires will be contained inside two (2) four-inch PVC conduits.

Approval Conditions:

Approved By:

Isabela Maia, Approved

Malik Drayton, Approved with Conditions

APPROVAL CONDITION: MD20220314: Contractor shall take all necessary precautions to avoid damaging any tree or tree part with equipment.

APPROVAL CONDITION: MD20220314: All nearby street tree(s) shall be protected prior to and during all construction activities using TREE BOX or TREE WRAPS. . TREE BOX shall be constructed from 2 in. x 4 in. lumber creating a box around the border of the tree pit with 2 in. x 4 in. lumber standing straight up at the corners and wrapped with orange snow fence. Detail attached. . TREE WRAPS (TREE TRUNK WRAPPING PROTECTION LUMBER) shall consist of 2 in. x 4 in. and 8 ft. height lumber wired together in close spacing with zip ties or 16 gauge galvanized steel wire to form a protective enclosure around tree trunks. Use burlap to separate the wood from the bark if necessary to prevent wood from scraping or bruising bark. Do not use staples or puncture the trunk in any way.

APPROVAL CONDITION: MD20220314: Any tree roots less than two (2) inches in diameter that cannot be avoided during construction shall be carefully and cleanly cut with a clean pair of pruning shears or loppers. Roots are to be cut back flush with the edge of the trench. If any tree roots greater than two (2) inches in diameter are encountered, stop work immediately and contact the City Urban Forester. Any and all pruning of roots greater than 2 inches in diameter must be completed under the supervision of the City Urban Forester.

Eric Weisman, Approved

Kimberly M. Wells, Approved



CITY OF SOMERVILLE, MASSACHUSETTS
CITY CLERK'S OFFICE

KATJANA BALLANTYNE
MAYOR

KIMBERLY M. WELLS
CITY CLERK

April 19, 2022

NOTICE OF PUBLIC HEARING

You are hereby notified that the Somerville City Council will hold a Public Hearing on the following Petition. You are receiving this Notice because the Petitioner has reported that you own property that abuts the work that is being proposed. You and other members of the public are invited to attend and be heard at this Hearing.

This meeting of the City Council will be conducted via remote participation, online in a webinar hosted on the GoToWebinar platform.

You have two ways to be heard at this meeting:

1. You may testify remotely by entering the link exactly as it appears below into your internet browser any time before the meeting. You will then be asked to register for the meeting. After registering, you will receive an email with instructions to join the webinar when it starts.
2. If you are unable to attend but wish to be heard, you may send written comments by US mail to the City Clerk at the address below, or by email to cityclerk@somervillema.gov. Your comments must arrive no later than 12 Noon on the day of the Hearing, in order to be sure they are conveyed to the Council.

PETITION: Eversource (Nstar Electric) is applying for a Grant of Location to install 1,050 feet of conduit along Mystic Avenue from Medford, MA to Boston, MA as part of the Woburn Transmission Line project.

PLACE: <https://attendee.gotowebinar.com/register/6796143366429872655>

TIME: Thursday, April 28, 2022, at 7:00 PM.

PURPOSE: The work is necessary to provide service to the surrounding communities.



247 Station Drive
Westwood, MA 02090

March 8, 2022

City of Somerville
City Hall
93 Highland Avenue, 1st Floor
Somerville, MA 02143
Attention: Kimberly Wells, City Clerk

Re: Petition for Order of Grant of Location; Mystic to Woburn 115kV Project

Dear Ms. Welles:

As you are likely aware, Eversource Energy has been working on a project to install a new underground transmission electric circuit along various streets in Somerville. The work was originally authorized under Grant of Location Order issued by the City of Somerville on or about October 26, 2017, and recorded with the records of Grant of Location Orders of the City of Somerville in Book XVIII, Page 543. On or about June 10, 2021 the City of Somerville issued License # BL21-000056 recorded with Grant of Location Orders Docket #212027 and Book #18, Page 217 that modified the October 26, 2017 Order.

Unforeseen existing underground utilities has prevented Eversource from constructing the circuit duct bank along a portion of the route approved under License # BL21-000056. Eversource is now requesting a modification to License # BL21-000056 to allow the construction of the proposed duct bank as shown on engineering design plans submitted with an online license application filed on March 2, 2022. This request covers approximately eight hundred eight feet (880') of the 115-kilovolt transmission electric pipe type cable circuit and approximately one hundred seventy feet (170') of separate communication conduits along Mystic Avenue. Please see the filed plans for the specific proposed duct bank alignment.

Thank you for your consideration of this request. If you have any questions or need additional information, please contact me at your earliest convenience.

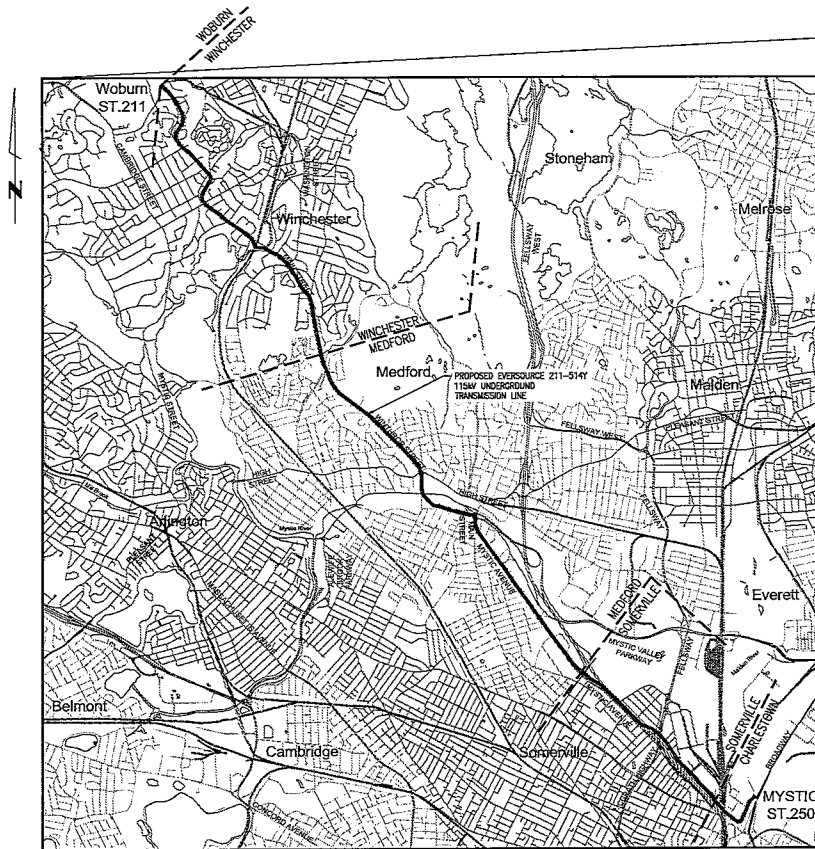
Sincerely,

A handwritten signature in black ink, appearing to read "Glenn E. Mauk".

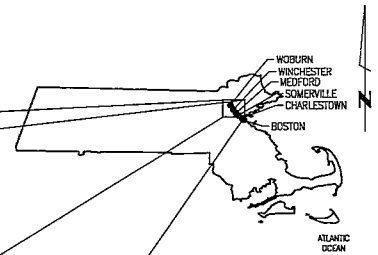
Glenn E. Mauk, PE, PLS, Esq.
Cornerstone Energy Services Inc.
Consultant For Eversource Energy
Mystic to Woburn 115 kV UG Line Project

Cell – 774-451-2142

NSTAR ELECTRIC & GAS LINE 211-514Y WOBURN STATION 211 TO MYSTIC STATION 250 115kV UNDERGROUND TRANSMISSION LINE



VICINITY MAP
 N.T.S.



AREA MAP MASSACHUSETTS
 N.T.S.

THREE BUSINESS DAYS BEFORE YOU DIG CALL
 MASSACHUSETTS 811
 TOLL FREE
 811 or 1-888-344-7233



REVISION			
N.O.	DESCRIPTION	DATE	APP.
2	ISSUED FOR REVISED GRANT OF LOCATION	03/18/22	MRM
1	ISSUED FOR REVISED GRANT OF LOCATION	02/09/22	MRM
0	ISSUED FOR REVISED GRANT OF LOCATION	03/20/21	MRM
COVER SHEET			
LINE 211-514Y WOBURN STATION 211 TO MYSTIC STATION 250			
115kV UNDERGROUND TRANSMISSION LINE			
WOBURN CHARLESTOWN, MASSACHUSETTS			
SCALE:	DATE	DRAWN	CHK'D
N.T.S.	5/09/17	SIE	MM
		APP.	
		DRAWING NO.	REV.
		T1 OF 2	2

DRAWING MANIFEST			
DRAWING NO.	TITLE/DESCRIPTION	REVISION	DATE
T1 OF 2	COVER SHEET	2	03/18/22
T2 OF 2	TABLE OF CONTENTS	2	03/18/22
KW 2 OF 2	KEY MAP 2	2	03/18/22
60 OF 79	PLAN AND PROFILE STA 300+00 TO 305+00	2	03/18/22
61 OF 79	PLAN AND PROFILE STA 305+00 TO 310+00	2	03/18/22
62 OF 79	PLAN AND PROFILE STA 310+00 TO 315+00	2	03/18/22
63 OF 79	PLAN AND PROFILE STA 315+00 TO 320+00	2	03/18/22
64 OF 79	PLAN AND PROFILE STA 320+00 TO 325+00	2	03/18/22
65 OF 79	PLAN AND PROFILE STA 325+00 TO 310+00	2	03/18/22
66 OF 79	PLAN AND PROFILE STA 310+00 TO 335+00	2	03/18/22
67 OF 79	PLAN AND PROFILE STA 335+00 TO 340+00	2	03/18/22
68 OF 79	PLAN AND PROFILE STA 340+00 TO 345+00	2	03/18/22
69 OF 79	PLAN AND PROFILE STA 345+00 TO 350+00	2	03/18/22
70A OF 79	PLAN AND PROFILE STA 350+00 TO 3505+00	2	03/18/22
70B OF 79	PLAN AND PROFILE STA 0+00 TO 1+03	2	03/18/22
71 OF 79	PLAN AND PROFILE STA 3505+00 TO 360+00	2	03/18/22
72A OF 79	PLAN AND PROFILE STA 360+00 TO 365+00	2	03/18/22
72B OF 79	PLAN AND PROFILE STA 100+00 TO 101+79	2	03/18/22
73 OF 79	PLAN AND PROFILE STA 365+00 TO 370+00	2	03/18/22
74 OF 79	PLAN AND PROFILE STA 370+00 TO 375+00	2	03/18/22
D1 OF 6	TRENCH DETAILS	2	03/18/22
D2 OF 6	TRENCH DETAILS	2	03/18/22
D3 OF 6	STANDARD MANHOLE DETAILS	2	03/18/22
D4 OF 6	MODIFIED MANHOLE DETAILS	2	03/18/22
D5 OF 6	MANHOLE DETAILS	2	03/18/22
D6 OF 6	COMMUNICATIONS VAULT DETAIL	2	03/18/22

1. BITUMENOUS CONCRETE
 2. CABLE MANHOLE
 3. CATCH BASIN
 4. CONCRETE
 5. CONCRETE BOUND
 6. CONCRETE BOUND W/DRILL HOLE
 7. CONFERRING TREE
 8. DECIDUOUS TREE
 9. STORM MANHOLE
 10. ELECTRIC HANDHOLE
 11. ELECTRIC MANHOLE
 12. GAS GATE
 13. GUY ANCHOR
 14. GUY POLE
 15. HANDCAP PARKING SPACE
 16. HYDRANT
 17. INVERT
 18. IRON PIPE
 19. IRON ROAD
 20. LAMP
 21. LIGHT POLE
 22. MAIL BOX
 23. MANHOLE
 24. METAL POST
 25. RIGHT-OF-WAY
 26. SANITARY MANHOLE
 27. SHRUB
 28. SIGN
 29. STONE BOUND
 30. STONE BOUND W/DRILL HOLE
 31. TELEPHONE MANHOLE
 32. TRAFFIC CONTROL BOX
 33. TRAFFIC LIGHT
 34. TROLLEY POLE
 35. UTILITY ACCESS PANEL
 36. UTILITY POLE
 37. UTILITY POLE W/LIGHT
 38. UTILITY POLE W/TRANSFORMER
 39. VENT PIPE
 40. WATER GATE
 41. WATER MANHOLE
 42. WOOD POST
 43. WATER LINE
 44. TELEPHONE LINE
 45. STORM LINE
 46. STEAM LINE
 47. SANITARY LINE
 48. GAS LINE
 49. FIRE PROTECTION LINE
 50. UNDERGROUND ELECTRIC CONDUIT
 51. OVERHEAD WIRE
 52. CABLE TELEVISION CONDUIT
 53. TRELISE
 54. BRUSHLINE
 55. CHAIN LINK FENCE
 56. STOCKADE FENCE
 57. WOOD GUARDRAIL
 58. STEEL GUARDRAIL
 59. HISTORIC RECORD OF RAILROAD TRACKS
 60. NO VISIBLE EVIDENCE IN FIELD
 61. CONSTRUCTION FENCE (CF)
 62. SILT FENCE (SF)
 63. GARDEN FENCE LINE (X)
 64. GROUND SURVEY LAYER
 65. GIS LAYER
 66. PROPERTY LINE



**POWER
ENGINEERS**
www.powereng.co.uk

1. THIS PLAN IS BASED UPON LIDAR DATA COLLECTED BETWEEN SEPTEMBER AND NOVEMBER OF 2013 AND AN ON-THE-GROUND SURVEY AND FIELD CHECK PERFORMED BY BSC GROUP, INC. IN OCTOBER THROUGH DECEMBER 2013.
2. THE UTILITIES AND FEATURES SHOWN HERE ON ARE BASED ON FIELD SURVEYS, AERIAL PHOTOGRAPHY, AND OTHER RECORDS. OTHER FACILITIES MAY EXIST NOT DISCOVERED THROUGH THE RECORD CHECK. THE CONTRACTOR SHALL VERIFY THE EXACT LOCATION, BOTH HORIZONTAL AND VERTICAL, OF ALL UTILITIES THROUGH THE APPROPRIATE UTILITY COMPANIES. CALL BEFORE YOU DIG OR 1-888-344-7233.
3. VERTICAL DATUM: NORTH AMERICAN UTILITY DATUM OF 1988 (NAVD88). HORIZONTAL DATUM: IS BASED ON MASSACHUSETTS STATE PLANE COORDINATE SYSTEMS IN U.S. SURVEY FEET, RAS 83 MASSACHUSETTS STATE PLANES, MAINLAND ZONE.
4. ALL AREAS DISTURBED BY CONSTRUCTION SHALL BE RETURNED TO THE ORIGINAL CONDITION OR BETTER AS DETERMINED BY OWNER.
5. CIVIL CONTRACTOR SHALL HAIL AWAY ALL UNUSED EXCAVATED MATERIAL TO PERMITTED SOIL DISPOSAL SITE.
6. CIVIL CONTRACTOR SHALL BE RESPONSIBLE FOR REPLACING AND REPAIRING ALL PLANTING, CURBS AND WALKS DISTURBED DUE TO THE CONSTRUCTION. ALL REPLACEMENT AND REPAIRS SHALL BE PERFORMED IN ACCORDANCE WITH THE APPLICABLE LOCAL AND/OR STATE REQUIREMENTS.
7. CONTRACTOR SHALL BE RESPONSIBLE FOR REPAIRING ANY & ALL UTILITIES AND FACILITIES DAMAGED DURING CONSTRUCTION. WORK AT THAT LOCATION WILL BE STOPPED IMMEDIATELY UNTIL THE DAMAGE IS CORRECTED WITH THE APPLICABLE UTILITY SPECIFICATION, LOCAL AND/OR STATE REQUIREMENTS. IF DAMAGE TO OTHER UTILITIES OCCURS, WORK AT THAT LOCATION WILL BE HALTED IMMEDIATELY UNTIL CORRECTED.
8. CONTRACTOR IS RESPONSIBLE FOR RELOCATING / REPLACING ANY EXISTING UTILITY THAT IS IN DIRECT CONFLICT WITH THE WORK. RELOCATION / REPLACEMENT SHOULD BE COORDINATED WITH THE APPLICABLE OWNER OF THE AFFECTED UTILITY.
9. CONTRACTOR TO COORDINATE TREE REMOVAL OR TREE ROOT CUTTING WITH APPLICABLE PRIVATE PROPERTY OWNER.

2	ISSUED FOR REVISED GRANT OF LOCATION	LAS	03/18/12	MGM
1	ISSUED FOR REVISED GRANT OF LOCATION	BWF	02/09/12	MGM
0	ISSUED FOR REVISED GRANT OF LOCATION	BWF	03/20/11	MGM
N.O.	DESCRIPTION	BY	DATE	APPR.

EVERSOURCE
ENERGY

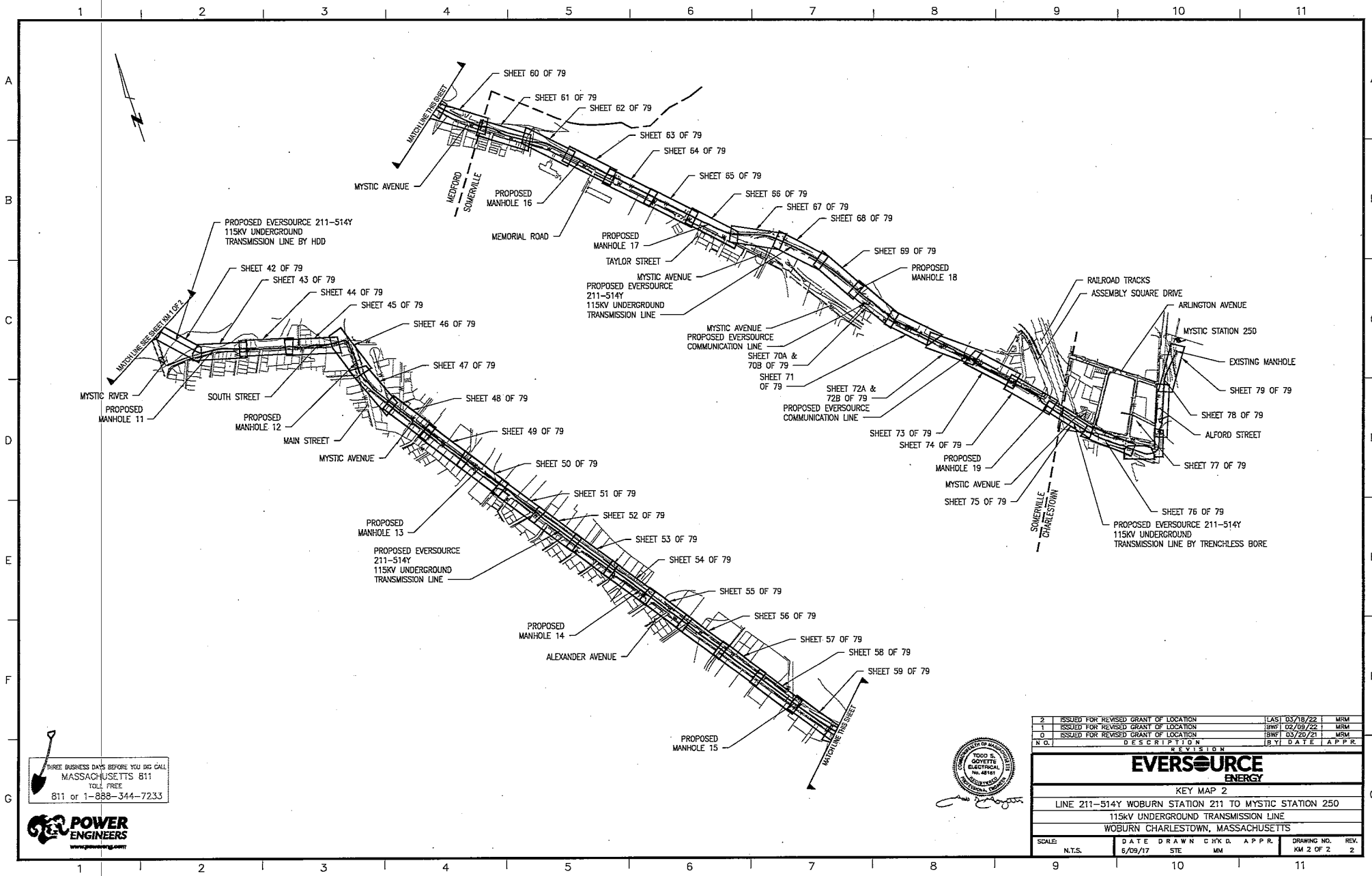
TABLE OF CONTENTS

LINE 211-514Y WOBURN STATION 211 TO MYSTIC STATION 250

115KV UNDERGROUND TRANSMISSION LINE

WOBURN CHARLESTOWN, MASSACHUSETTS

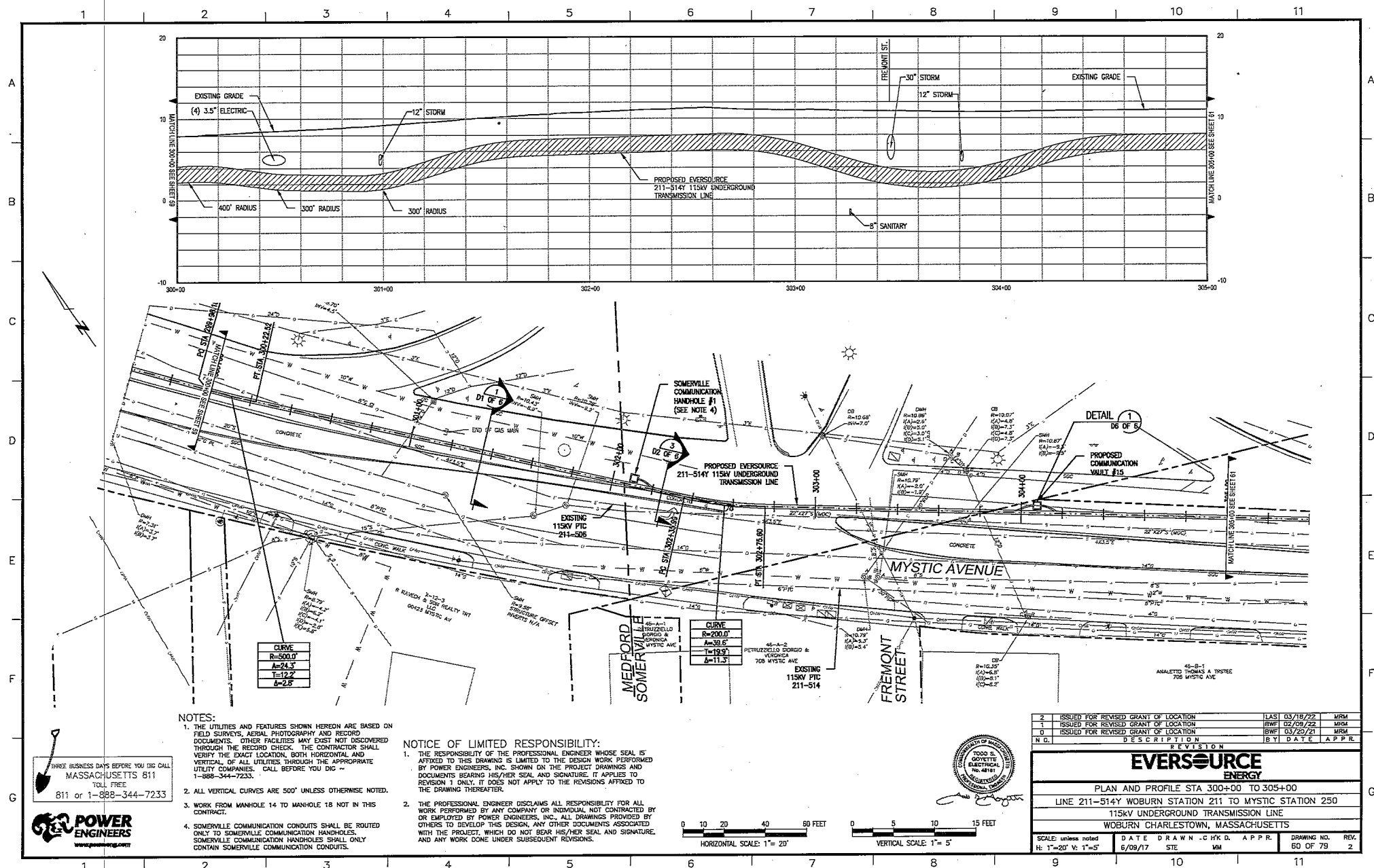
SCALE:	D DATE	DRAWN	CHECKED	APPROVED	DRAWING NO.	REV.
N.T.S.	5/09/17	STE	MM		T2 OF 2	2

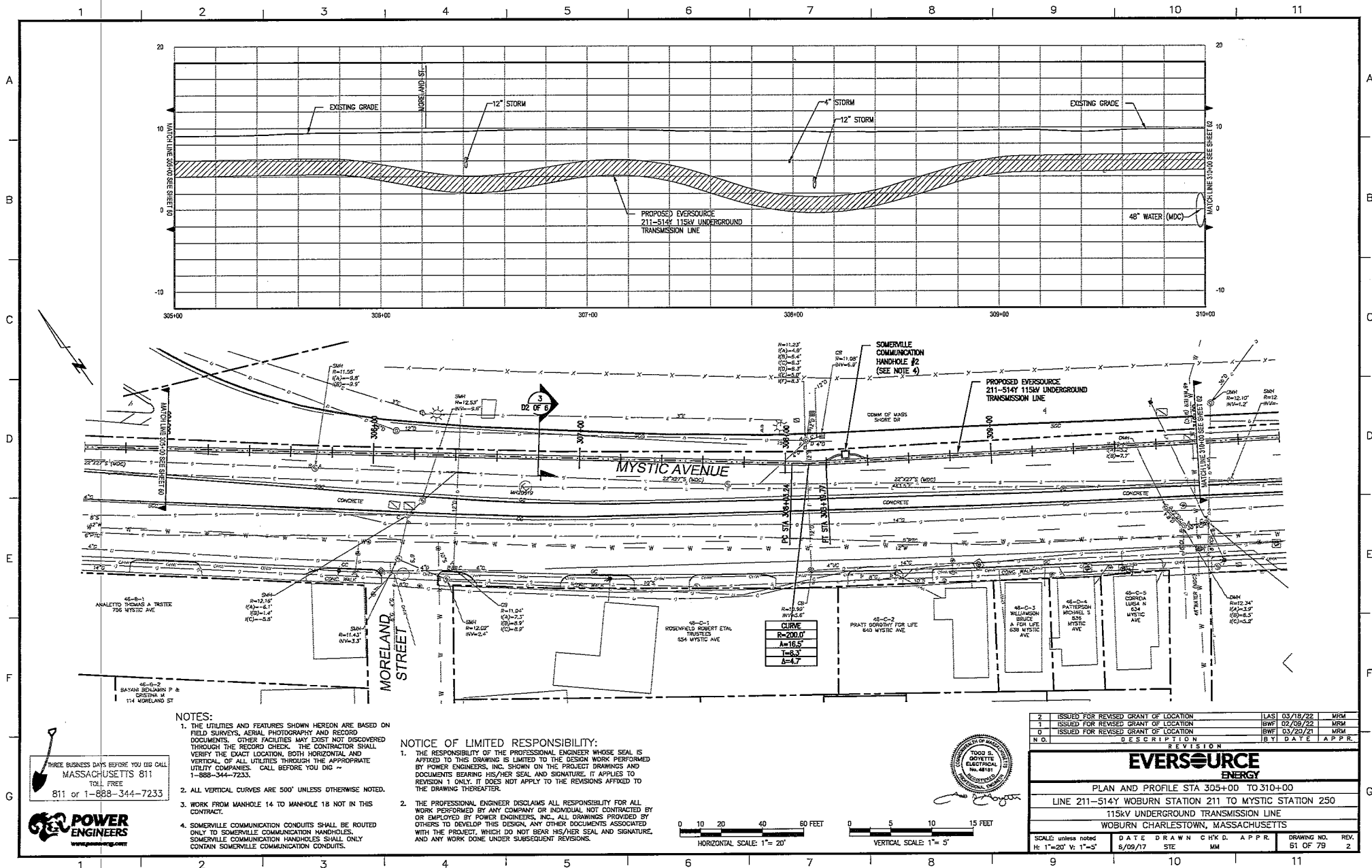


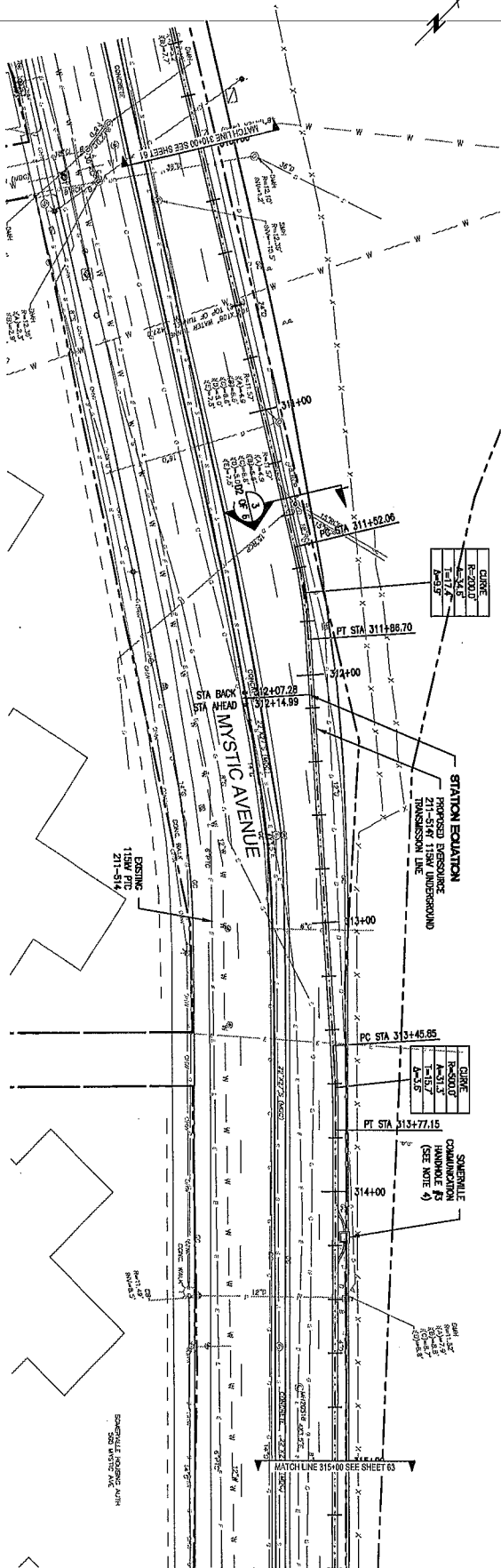
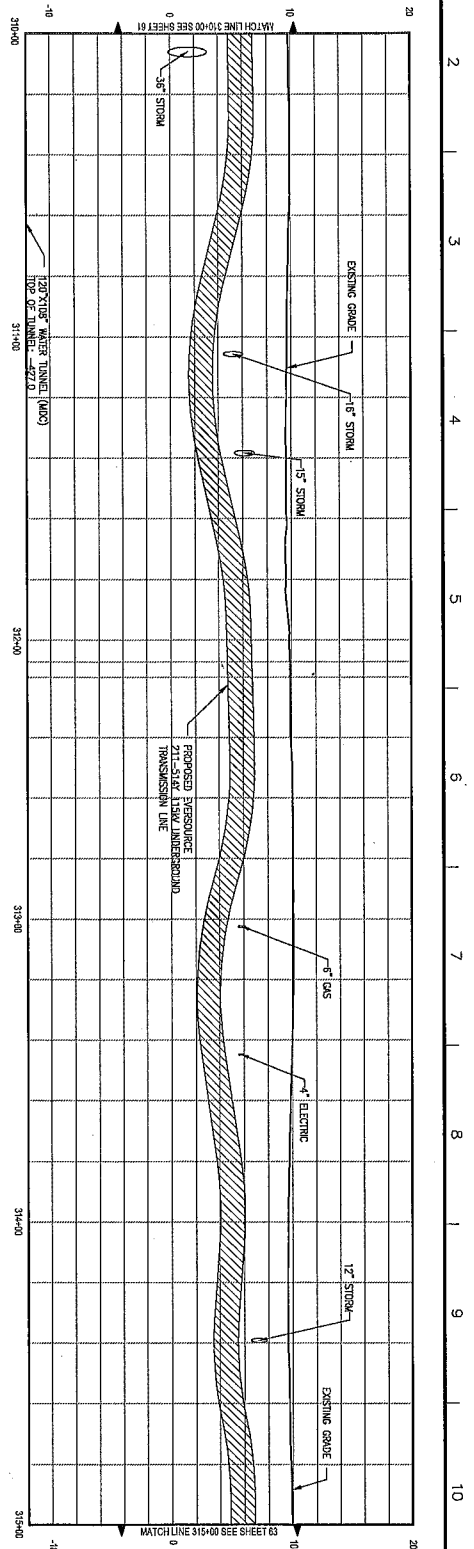
THREE BUSINESS DAYS BEFORE YOU DIG CALL
 MASSACHUSETTS 811
 TOLL FREE
 811 or 1-888-344-7233



2	ISSUED FOR REVISED GRANT OF LOCATION	LAST 03/18/22	MRM
1	ISSUED FOR REVISED GRANT OF LOCATION	BWF 02/09/22	MRM
0	ISSUED FOR REVISED GRANT OF LOCATION	BWF 03/20/21	MRM
REVISION			
N.O.	DESCRIPTION	BY	DATE
EVERSOURCE ENERGY KEY MAP 2 LINE 211-514Y WOBURN STATION 211 TO MYSTIC STATION 250 115KV UNDERGROUND TRANSMISSION LINE WOBURN CHARLESTOWN, MASSACHUSETTS			
SCALE	DATE	DRAWN	CHK'D
N.T.S.	5/09/17	MM	MM
DRAWING NO.			REV.
KM 2 OF 2			2







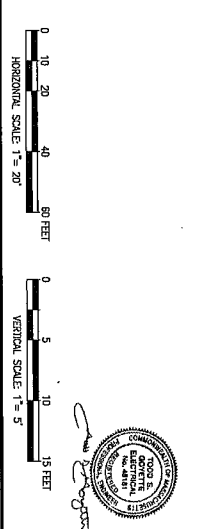
POWER ENGINEERS
 811 OF 1-888-344-7233
 MASSACHUSETTS 811
 SHEET BUSINESS ONLY SEE SHEET 811

- NOTES:**
1. THE UTILITIES AND FEATURES SHOWN HEREON ARE BASED ON FIELD SURVEYS, AERIAL PHOTOGRAPHY AND RECORD DRAWINGS. THE ENGINEER HAS NOT BEEN ADVISED OF ANY CHANGES TO THE UTILITIES OR FEATURES SHOWN HEREON SINCE THE DATE OF THE SURVEY. THE CONTRACTOR SHALL VERIFY THE EXACT LOCATION, DEPTH, AND CHARACTER OF ALL UTILITIES AND FEATURES SHOWN HEREON PRIOR TO CONSTRUCTION. CALL BEFORE YOU DIG.
 2. ALL VERTICAL CURVES ARE 500' UNLESS OTHERWISE NOTED.
 3. WORK FROM MANHOLE 14 TO MANHOLE 18 NOT IN THIS CONTRACT.
 4. SEPARATE COMMUNICATION CONDUITS SHALL BE ROUTED ONLY TO SEPARATE COMMUNICATION HANDHOLES. ONLY CONDUIT SEPARATE COMMUNICATION CONDUITS.

NOTICE OF LIMITED RESPONSIBILITY:

1. THE PROFESSIONAL ENGINEER'S RESPONSIBILITY IS LIMITED TO THE DESIGN AND CONSTRUCTION OF THE TRANSMISSION LINE SHOWN ON THIS DRAWING. THE PROFESSIONAL ENGINEER DOES NOT ASSUME RESPONSIBILITY FOR THE DESIGN OR CONSTRUCTION OF ANY OTHER WORK SHOWN ON THIS DRAWING.

2. THE PROFESSIONAL ENGINEER DISCLAIMS ALL RESPONSIBILITY FOR ALL WORK PERFORMED BY ANY COMPANY OR INDIVIDUAL NOT CONTRACTED BY THE PROFESSIONAL ENGINEER. THE PROFESSIONAL ENGINEER DOES NOT ASSUME RESPONSIBILITY FOR THE DESIGN OR CONSTRUCTION OF ANY OTHER WORK SHOWN ON THIS DRAWING.



REVISION		DATE	BY	APP
1	ISSUED FOR REVISION	03/18/22	LMN	
2	ISSUED FOR REVISION	03/18/22	LMN	
3	ISSUED FOR REVISION	03/18/22	LMN	
4	ISSUED FOR REVISION	03/18/22	LMN	
5	ISSUED FOR REVISION	03/18/22	LMN	
6	ISSUED FOR REVISION	03/18/22	LMN	
7	ISSUED FOR REVISION	03/18/22	LMN	
8	ISSUED FOR REVISION	03/18/22	LMN	
9	ISSUED FOR REVISION	03/18/22	LMN	
10	ISSUED FOR REVISION	03/18/22	LMN	
11	ISSUED FOR REVISION	03/18/22	LMN	

EVERSOURCE ENERGY

PLAN AND PROFILE STA 310+00 TO 315+00

115KV UNDERGROUND TRANSMISSION LINE

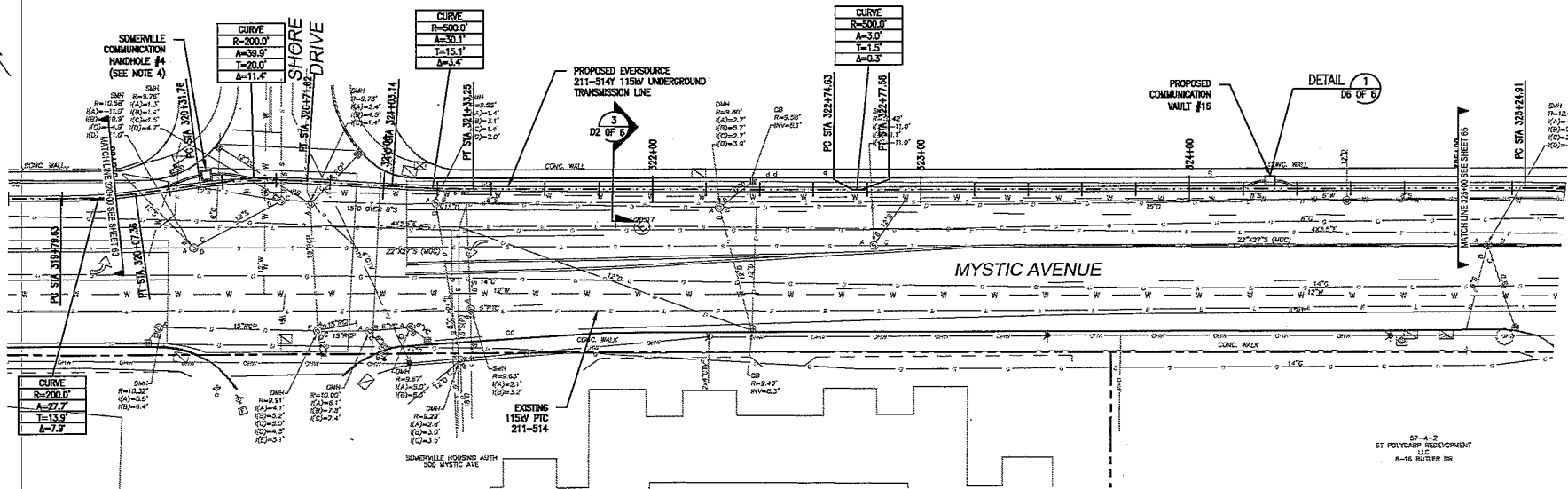
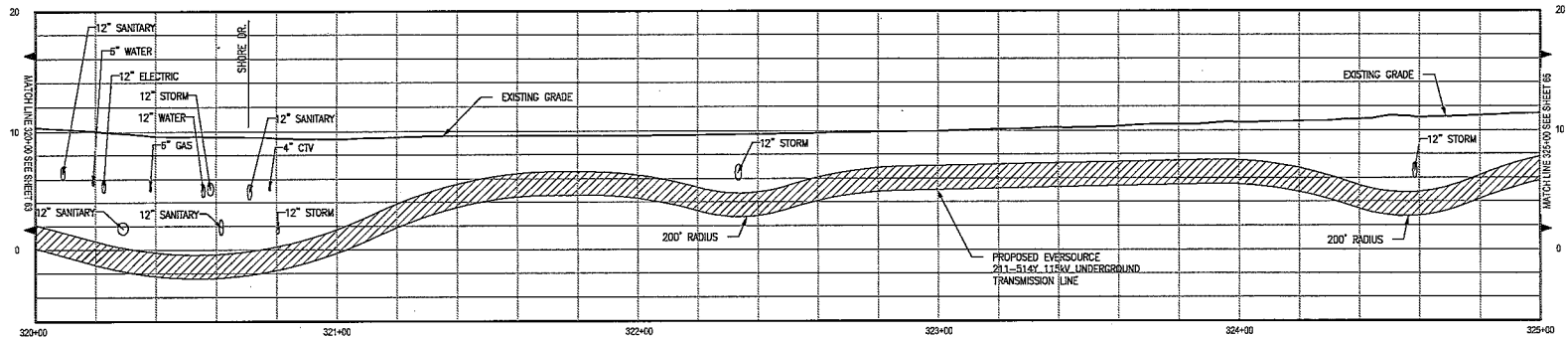
WOBURN CHARLESTOWN, MASSACHUSETTS

SCALE: HORIZONTAL 1"=20' VERTICAL 1"=5'

DATE: 03/18/22

DRAWING NO.: 62 OF 79

REV: 2

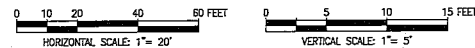


NOTES:

1. THE UTILITIES AND FEATURES SHOWN HEREON ARE BASED ON FIELD SURVEYS, AERIAL PHOTOGRAPHY AND RECORD DOCUMENTS. OTHER FACILITIES MAY EXIST NOT DISCOVERED THROUGH THE RECORD CHECK. THE CONTRACTOR SHALL VERIFY THE EXACT LOCATION, BOTH HORIZONTAL AND VERTICAL, OF ALL UTILITIES THROUGH THE APPROPRIATE UTILITY COMPANIES. CALL BEFORE YOU DIG !! 1-888-344-7233.
2. ALL VERTICAL CURVES ARE 500' UNLESS OTHERWISE NOTED.
3. WORK FROM MANHOLE 14 TO MANHOLE 18 NOT IN THIS CONTRACT.
4. SOMERVILLE COMMUNICATION CONDUITS SHALL BE ROUTED ONLY TO SOMERVILLE COMMUNICATION HANDHOLES. SOMERVILLE COMMUNICATION HANDHOLES SHALL ONLY CONTAIN SOMERVILLE COMMUNICATION CONDUITS.

NOTICE OF LIMITED RESPONSIBILITY:

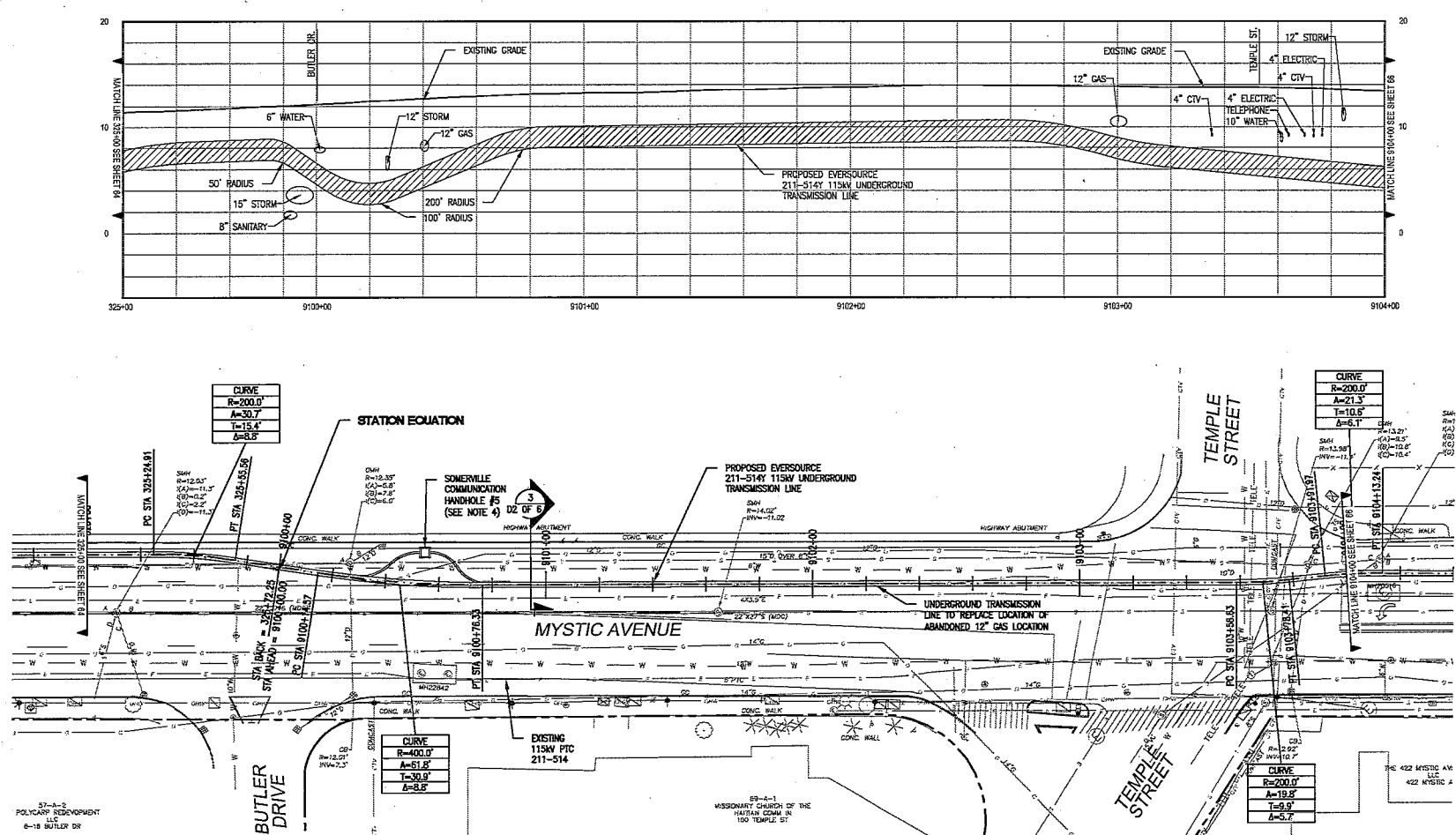
1. THE RESPONSIBILITY OF THE PROFESSIONAL ENGINEER WHOSE SEAL IS AFFIXED TO THIS DRAWING IS LIMITED TO THE DESIGN WORK PERFORMED BY POWER ENGINEERS, INC. SHOWN ON THE PROJECT DRAWINGS AND DOCUMENTS BEARING HIS/HER SEAL AND SIGNATURE. IT APPLIES TO REVISION 1 ONLY. IT DOES NOT APPLY TO THE REVISIONS AFFIXED TO THE DRAWING THEREAFTER.
2. THE PROFESSIONAL ENGINEER DISCLAIMS ALL RESPONSIBILITY FOR ALL WORK PERFORMED BY ANY COMPANY OR INDIVIDUAL NOT CONTRACTED BY OR EMPLOYED BY POWER ENGINEERS, INC. ALL DRAWINGS PROVIDED BY OTHERS TO DEVELOP THIS DESIGN, ANY OTHER DOCUMENTS ASSOCIATED WITH THE PROJECT, WHICH DO NOT BEAR HIS/HER SEAL AND SIGNATURE, AND ANY WORK DONE UNDER SUBSEQUENT REVISIONS.



2	ISSUED FOR REVISED GRANT OF LOCATION	LAS	03/18/22	MRM
1	ISSUED FOR REVISED GRANT OF LOCATION	BWF	02/09/22	MRM
0	ISSUED FOR REVISED GRANT OF LOCATION	BWF	05/20/21	MRM
REVISION				
EVERSOURCE ENERGY				
PLAN AND PROFILE STA 320+00 TO 325+00				
LINE 211-514Y WOBURN STATION 211 TO MYSTIC STATION 250				
115KV UNDERGROUND TRANSMISSION LINE				
WOBURN CHARLESTOWN, MASSACHUSETTS				
SCALE: unless noted	DATE	DRAWN	CHKD.	APP.R.
H: 1"=20' V: 1"=5'	5/09/17	STE	MM	
				DRAWING NO. 64 OF 79
				REV. 2

THREE BUSINESS DAYS BEFORE YOU DIG CALL
MASSACHUSETTS 811
TOLL FREE
811 or 1-888-344-7233





NOTES:

1. THE UTILITIES AND FEATURES SHOWN HEREON ARE BASED ON FIELD SURVEYS, AERIAL PHOTOGRAPHY AND RECORD DOCUMENTS. OTHER FACILITIES MAY EXIST NOT DISCOVERED THROUGH THE RECORD CHECK. THE CONTRACTOR SHALL VERIFY THE EXACT LOCATION, BOTH HORIZONTAL AND VERTICAL, OF ALL UTILITIES THROUGH THE APPROPRIATE UTILITY COMPANIES. CALL BEFORE YOU DIG ~ 1-888-344-7233.
2. ALL VERTICAL CURVES ARE 500' UNLESS OTHERWISE NOTED.
3. WORK FROM MANHOLE 14 TO MANHOLE 18 NOT IN THIS CONTRACT.
4. SOMERVILLE COMMUNICATION CONDUITS SHALL BE ROUTED ONLY TO SOMERVILLE COMMUNICATION HANDHOLES. SOMERVILLE COMMUNICATION HANDHOLES SHALL ONLY CONTAIN SOMERVILLE COMMUNICATION CONDUITS.

NOTICE OF LIMITED RESPONSIBILITY:

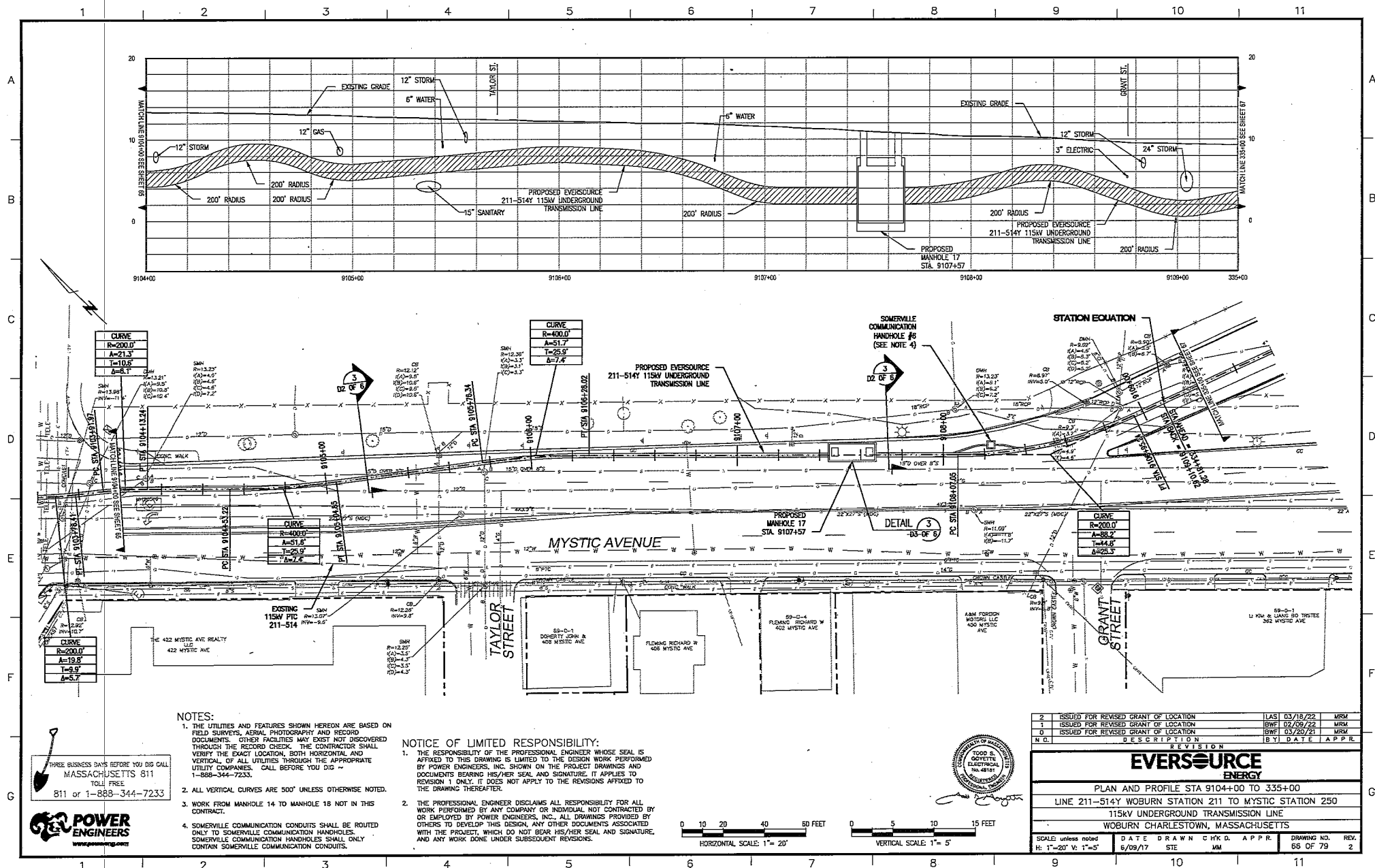
1. THE RESPONSIBILITY OF THE PROFESSIONAL ENGINEER WHOSE SEAL IS AFFIXED TO THIS DRAWING IS LIMITED TO THE DESIGN WORK PERFORMED BY POWER ENGINEERS, INC. SHOWN ON THE PROJECT DRAWINGS AND DOCUMENTS BEARING HIS/HER SEAL AND SIGNATURE. IT APPLIES TO REVISION 1 ONLY. IT DOES NOT APPLY TO THE REVISIONS AFFIXED TO THE DRAWING THEREAFTER.
2. THE PROFESSIONAL ENGINEER DISCLAIMS ALL RESPONSIBILITY FOR ALL WORK PERFORMED BY ANY COMPANY OR INDIVIDUAL NOT CONTRACTED BY OR EMPLOYED BY POWER ENGINEERS, INC. ALL DRAWINGS PROVIDED BY OTHERS TO DEVELOP THIS DESIGN, ANY OTHER DOCUMENTS ASSOCIATED WITH THE PROJECT, WHICH DO NOT BEAR HIS/HER SEAL AND SIGNATURE, AND ANY WORK DONE UNDER SUBSEQUENT REVISIONS.

THREE BUSINESS DAYS BEFORE YOU DIG CALL
MASSACHUSETTS 811
TOLL FREE
811 or 1-888-344-7233



NO.	DESCRIPTION	DATE	BY	APP.
2	ISSUED FOR REVISED GRANT OF LOCATION	03/18/22	MSM	
1	ISSUED FOR REVISED GRANT OF LOCATION	02/09/22	MSM	
0	ISSUED FOR REVISED GRANT OF LOCATION	03/20/21	MSM	

REVISION	
EVERSOURCE	ENERGY
PLAN AND PROFILE STA 325+00 TO 9104+00	
LINE 211-514 WOBURN STATION 211 TO MYSTIC STATION 250	
115KV UNDERGROUND TRANSMISSION LINE	
WOBURN CHARLESTOWN, MASSACHUSETTS	
SCALE: unless noted H: 1"=20' V: 1"=5'	DATE DRAWN: 5/09/17 CHKD: STE APP: MM
DRAWING NO.: 65 OF 79	REV: 2



NOTES:

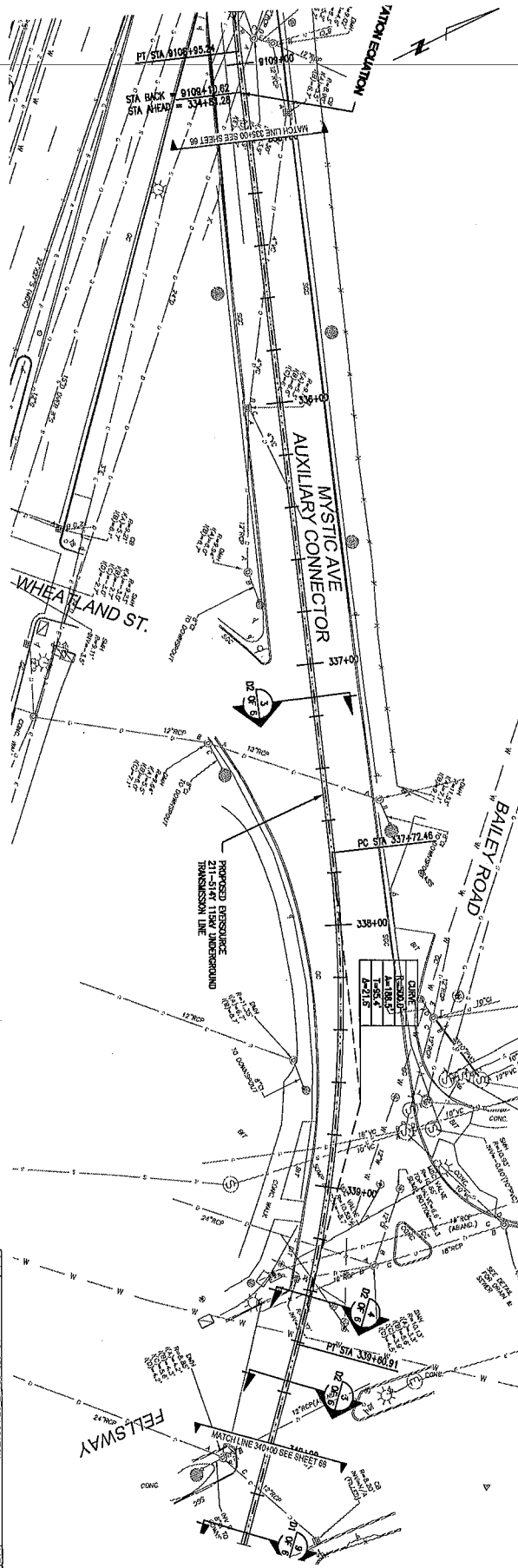
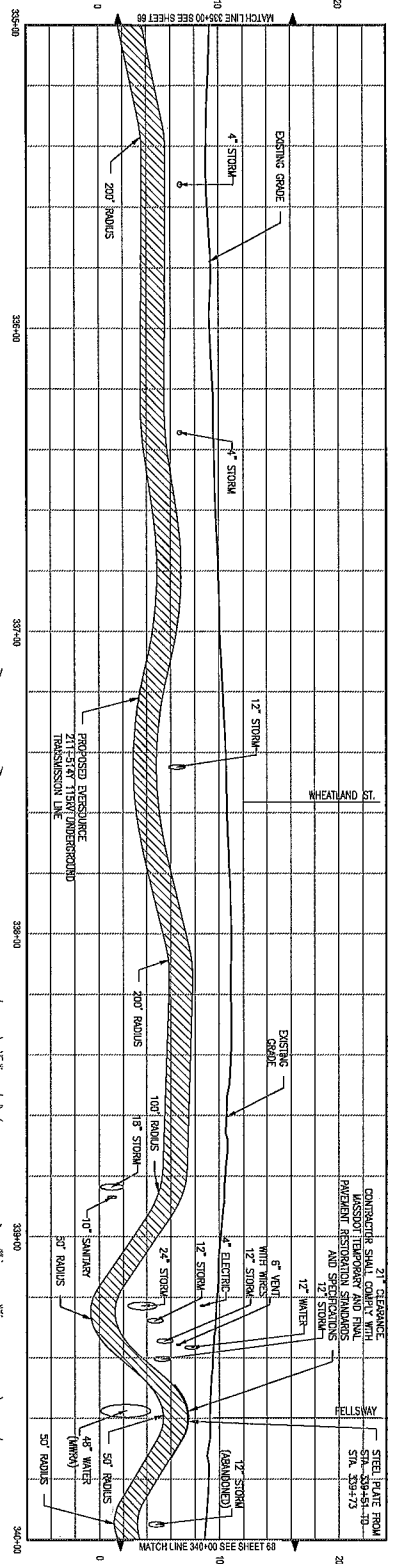
1. THE UTILITIES AND FEATURES SHOWN HEREON ARE BASED ON FIELD SURVEYS, AERIAL PHOTOGRAPHY AND RECORD DOCUMENTS. OTHER FACILITIES MAY EXIST NOT DISCOVERED THROUGH THE RECORD CHECK. THE CONTRACTOR SHALL VERIFY THE EXACT LOCATION, BOTH HORIZONTAL AND VERTICAL, OF ALL UTILITIES THROUGH THE APPROPRIATE UTILITY COMPANIES. CALL BEFORE YOU DIG - 1-888-344-7233.
2. ALL VERTICAL CURVES ARE 500' UNLESS OTHERWISE NOTED.
3. WORK FROM MANHOLE 14 TO MANHOLE 18 NOT IN THIS CONTRACT.
4. SOMERVILLE COMMUNICATION HANDHOLES SHALL BE ROUTED ONLY TO SOMERVILLE COMMUNICATION HANDHOLES. SOMERVILLE COMMUNICATION HANDHOLES SHALL ONLY CONTAIN SOMERVILLE COMMUNICATION CONDUITS.

NOTICE OF LIMITED RESPONSIBILITY:

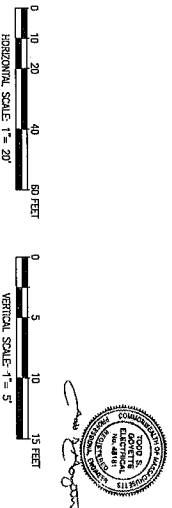
1. THE RESPONSIBILITY OF THE PROFESSIONAL ENGINEER WHOSE SEAL IS AFFIXED TO THIS DRAWING IS LIMITED TO THE DESIGN WORK PERFORMED BY POWER ENGINEERS, INC. SHOWN ON THE PROJECT DRAWINGS AND DOCUMENTS BEARING HIS/HER SEAL AND SIGNATURE. IT APPLIES TO REVISION 1 ONLY. IT DOES NOT APPLY TO THE REVISIONS AFFIXED TO THE DRAWING THEREAFTER.
2. THE PROFESSIONAL ENGINEER DISCLAIMS ALL RESPONSIBILITY FOR ALL WORK PERFORMED BY ANY COMPANY OR INDIVIDUAL NOT CONTRACTED BY OR EMPLOYED BY POWER ENGINEERS, INC. ALL DRAWINGS PROVIDED BY OTHERS TO DEVELOP THIS DESIGN, ANY OTHER DOCUMENTS ASSOCIATED WITH THE PROJECT, WHICH DO NOT BEAR HIS/HER SEAL AND SIGNATURE, AND ANY WORK DONE UNDER SUBSEQUENT REVISIONS.



REVISION		DATE	BY	APP.
2	ISSUED FOR REVISED GRANT OF LOCATION	03/18/22	MRM	
1	ISSUED FOR REVISED GRANT OF LOCATION	02/09/22	MRM	
0	ISSUED FOR REVISED GRANT OF LOCATION	03/20/21	MRM	
DESCRIPTION		DATE	BY	APP.
EVERSOURCE ENERGY				
PLAN AND PROFILE STA 9104+00 TO 335+00				
LINE 211-514Y WOBURN STATION 211 TO MYSTIC STATION 250				
115kV UNDERGROUND TRANSMISSION LINE				
WOBURN CHARLESTOWN, MASSACHUSETTS				
SCALE: unless noted	DATE	DRAWN	CHK'D	APP.
1"=20' V: 1"=5'	5/09/17	STE	MM	
DRAWING NO. 68 OF 79				2

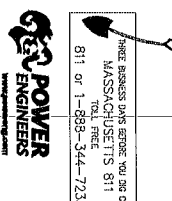


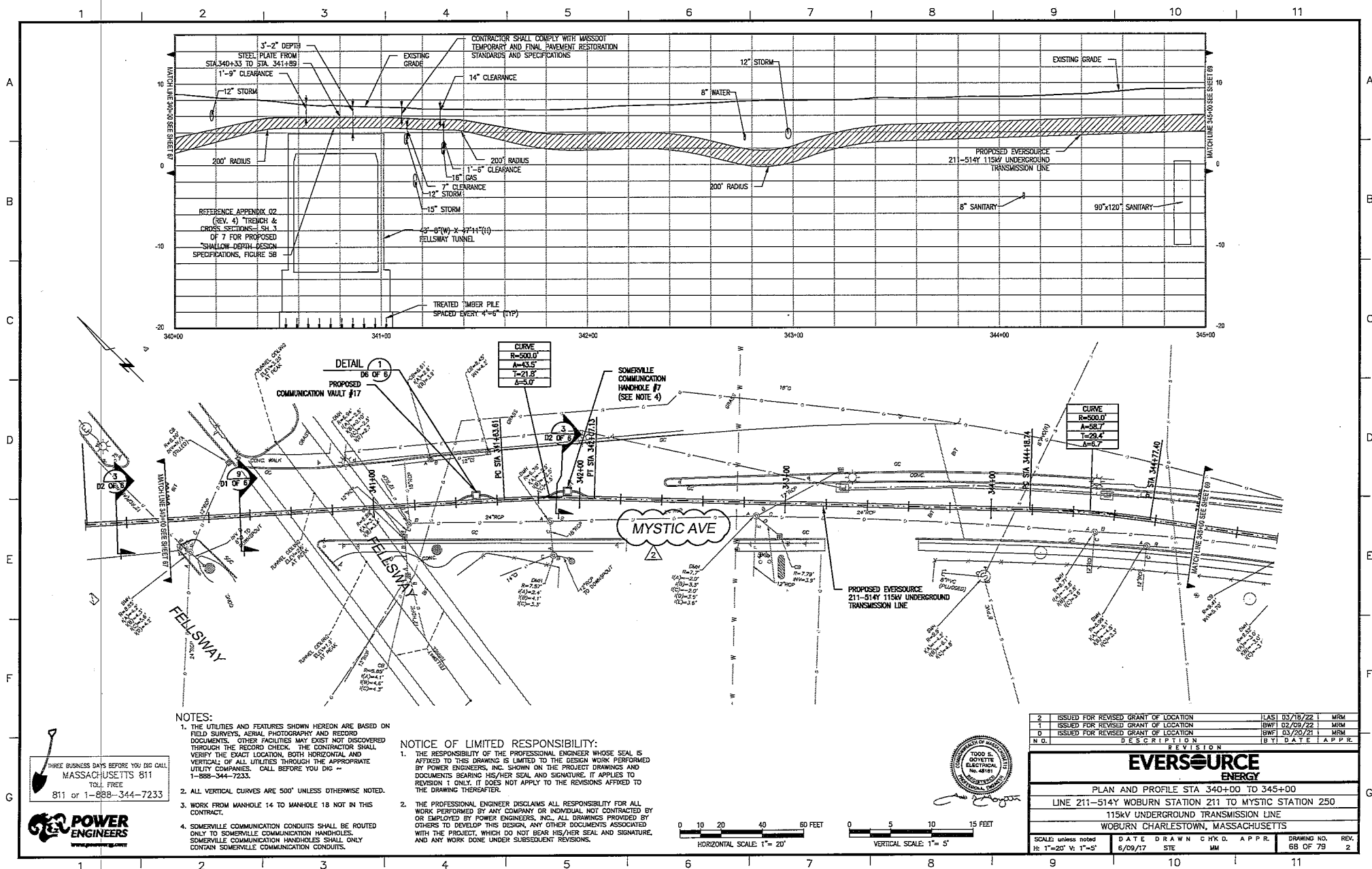
- NOTES:**
1. THE UTILITIES AND FEATURES SHOWN HEREIN ARE BASED ON THE RECORD DRAWINGS AND FIELD SURVEY. THE CONTRACTOR SHALL VERIFY THE RECORD DRAWINGS AND FIELD SURVEY. THE CONTRACTOR SHALL BE RESPONSIBLE FOR THE ACCURACY OF THE UTILITIES AND FEATURES SHOWN HEREIN. IF ANY DISCREPANCIES ARE FOUND, THE CONTRACTOR SHALL NOTIFY THE ENGINEER IMMEDIATELY.
 2. ALL UTILITIES AND FEATURES ARE SHOWN UNLESS OTHERWISE NOTED.
 3. WORK FROM WAINWALE 14 TO WAINWALE 18 NOT IN THIS CONTRACT.
- NOTICE OF LIMITED RESPONSIBILITY:**
- THE PROFESSIONAL ENGINEER'S RESPONSIBILITY IS LIMITED TO THE DESIGN, WORK PERFORMED BY THE CONTRACTOR, AND THE ACCURACY OF THE RECORD DRAWINGS AND FIELD SURVEY. THE PROFESSIONAL ENGINEER DOES NOT WARRANT THE ACCURACY OF THE UTILITIES AND FEATURES SHOWN HEREIN. THE PROFESSIONAL ENGINEER'S RESPONSIBILITY IS LIMITED TO THE DESIGN, WORK PERFORMED BY THE CONTRACTOR, AND THE ACCURACY OF THE RECORD DRAWINGS AND FIELD SURVEY.

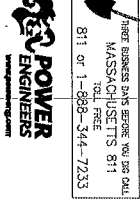
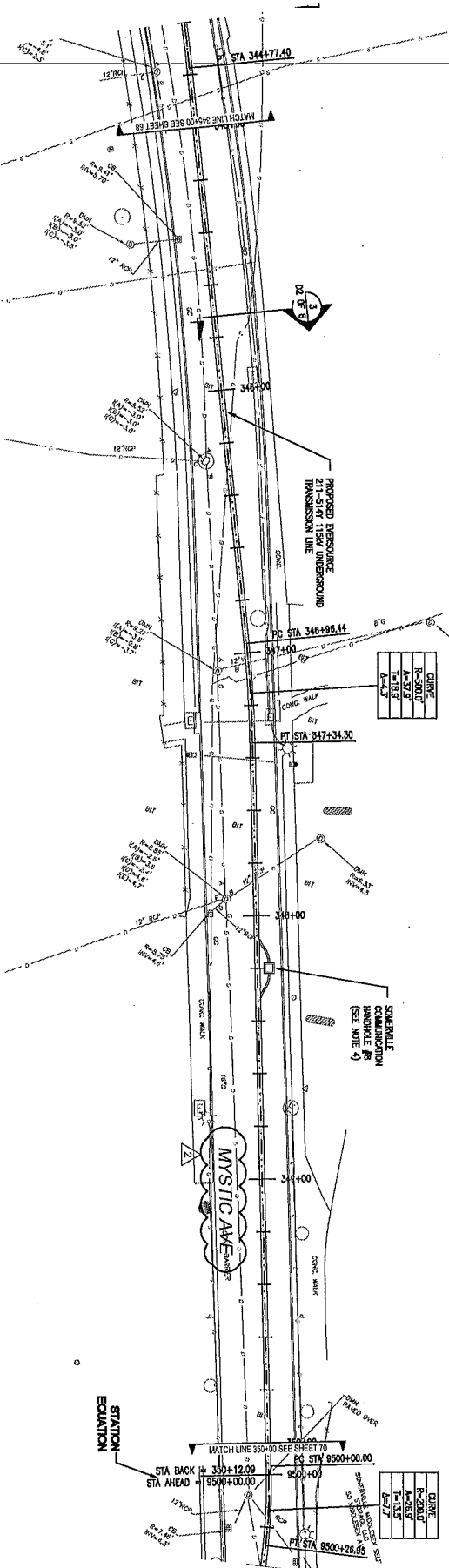
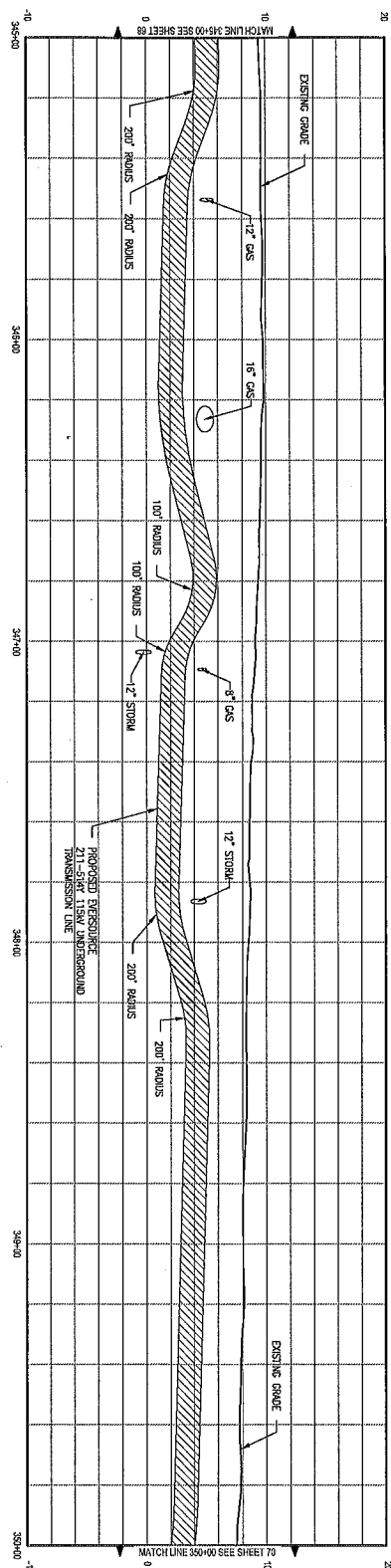


REVISION		DATE	BY	CHKD.	APP'D.
1	ISSUED FOR REVISION	02/16/22	MSD		
2	ISSUED FOR REVISION	02/16/22	MSD		
3	ISSUED FOR REVISION	02/16/22	MSD		

PLAN AND PROFILE STA 335+00 TO 340+00	
211KV UNDERGROUND TRANSMISSION LINE	
WOOLLEN CHARLESTOWN, MASSACHUSETTS	
SCALE: HORIZONTAL 1"=20'	VERTICAL 1"=5'
DATE: 6/09/22	DRAWING NO.: 67 OF 79
BY: MS	CHKD: MS
APP'D: MS	REV: 2



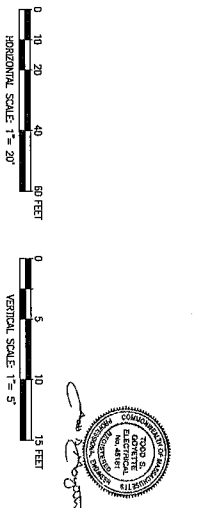




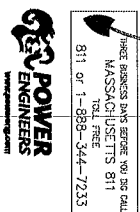
- NOTES:**
1. THE UTILITIES AND FEATURES SHOWN HEREIN ARE BASED ON RECORD DRAWINGS AND FIELD SURVEY DATA. THE CONTRACTOR SHALL VERIFY THE LOCATION AND DEPTH OF ALL UTILITIES THROUGHOUT THE PROJECT. THE CONTRACTOR SHALL BE RESPONSIBLE FOR THE PROTECTION OF ALL UTILITIES THROUGHOUT THE PROJECT.
 2. ALL VERTICAL CURVES ARE 500' UNLESS OTHERWISE NOTED.
 3. WORK FROM MANHOLE 14 TO MANHOLE 18 NOT IN THIS CONTRACT.
 4. SUGGESTED COMMUNICATION CONDUITS SHALL BE ROUTED ONLY TO SUGGESTED COMMUNICATION MANHOLES.
 5. SUGGESTED COMMUNICATION CONDUITS SHALL BE ROUTED ONLY TO SUGGESTED COMMUNICATION MANHOLES.

NOTICE OF LIMITED RESPONSIBILITY:

THE PROFESSIONAL ENGINEER'S LIABILITY FOR ALL WORK PERFORMED BY ANY COMPANY OR INDIVIDUAL NOT CONTRACTED BY THE PROFESSIONAL ENGINEER IS LIMITED TO THE DESIGN WORK PERFORMED BY THE PROFESSIONAL ENGINEER. THE PROFESSIONAL ENGINEER'S LIABILITY IS LIMITED TO THE DESIGN WORK PERFORMED BY THE PROFESSIONAL ENGINEER. THE PROFESSIONAL ENGINEER'S LIABILITY IS LIMITED TO THE DESIGN WORK PERFORMED BY THE PROFESSIONAL ENGINEER.



NO.	REVISION	DATE	BY	APP.
1	ISSUED FOR REVISION	03/18/22	LMN	
2	ISSUED FOR REVISION	03/18/22	LMN	
3	ISSUED FOR REVISION	03/18/22	LMN	
4	ISSUED FOR REVISION	03/18/22	LMN	
5	ISSUED FOR REVISION	03/18/22	LMN	
6	ISSUED FOR REVISION	03/18/22	LMN	
7	ISSUED FOR REVISION	03/18/22	LMN	
8	ISSUED FOR REVISION	03/18/22	LMN	
9	ISSUED FOR REVISION	03/18/22	LMN	
10	ISSUED FOR REVISION	03/18/22	LMN	
11	ISSUED FOR REVISION	03/18/22	LMN	
12	ISSUED FOR REVISION	03/18/22	LMN	
13	ISSUED FOR REVISION	03/18/22	LMN	
14	ISSUED FOR REVISION	03/18/22	LMN	
15	ISSUED FOR REVISION	03/18/22	LMN	
16	ISSUED FOR REVISION	03/18/22	LMN	
17	ISSUED FOR REVISION	03/18/22	LMN	
18	ISSUED FOR REVISION	03/18/22	LMN	
19	ISSUED FOR REVISION	03/18/22	LMN	
20	ISSUED FOR REVISION	03/18/22	LMN	
21	ISSUED FOR REVISION	03/18/22	LMN	
22	ISSUED FOR REVISION	03/18/22	LMN	
23	ISSUED FOR REVISION	03/18/22	LMN	
24	ISSUED FOR REVISION	03/18/22	LMN	
25	ISSUED FOR REVISION	03/18/22	LMN	
26	ISSUED FOR REVISION	03/18/22	LMN	
27	ISSUED FOR REVISION	03/18/22	LMN	
28	ISSUED FOR REVISION	03/18/22	LMN	
29	ISSUED FOR REVISION	03/18/22	LMN	
30	ISSUED FOR REVISION	03/18/22	LMN	
31	ISSUED FOR REVISION	03/18/22	LMN	
32	ISSUED FOR REVISION	03/18/22	LMN	
33	ISSUED FOR REVISION	03/18/22	LMN	
34	ISSUED FOR REVISION	03/18/22	LMN	
35	ISSUED FOR REVISION	03/18/22	LMN	
36	ISSUED FOR REVISION	03/18/22	LMN	
37	ISSUED FOR REVISION	03/18/22	LMN	
38	ISSUED FOR REVISION	03/18/22	LMN	
39	ISSUED FOR REVISION	03/18/22	LMN	
40	ISSUED FOR REVISION	03/18/22	LMN	
41	ISSUED FOR REVISION	03/18/22	LMN	
42	ISSUED FOR REVISION	03/18/22	LMN	
43	ISSUED FOR REVISION	03/18/22	LMN	
44	ISSUED FOR REVISION	03/18/22	LMN	
45	ISSUED FOR REVISION	03/18/22	LMN	
46	ISSUED FOR REVISION	03/18/22	LMN	
47	ISSUED FOR REVISION	03/18/22	LMN	
48	ISSUED FOR REVISION	03/18/22	LMN	
49	ISSUED FOR REVISION	03/18/22	LMN	
50	ISSUED FOR REVISION	03/18/22	LMN	
51	ISSUED FOR REVISION	03/18/22	LMN	
52	ISSUED FOR REVISION	03/18/22	LMN	
53	ISSUED FOR REVISION	03/18/22	LMN	
54	ISSUED FOR REVISION	03/18/22	LMN	
55	ISSUED FOR REVISION	03/18/22	LMN	
56	ISSUED FOR REVISION	03/18/22	LMN	
57	ISSUED FOR REVISION	03/18/22	LMN	
58	ISSUED FOR REVISION	03/18/22	LMN	
59	ISSUED FOR REVISION	03/18/22	LMN	
60	ISSUED FOR REVISION	03/18/22	LMN	
61	ISSUED FOR REVISION	03/18/22	LMN	
62	ISSUED FOR REVISION	03/18/22	LMN	
63	ISSUED FOR REVISION	03/18/22	LMN	
64	ISSUED FOR REVISION	03/18/22	LMN	
65	ISSUED FOR REVISION	03/18/22	LMN	
66	ISSUED FOR REVISION	03/18/22	LMN	
67	ISSUED FOR REVISION	03/18/22	LMN	
68	ISSUED FOR REVISION	03/18/22	LMN	
69	ISSUED FOR REVISION	03/18/22	LMN	
70	ISSUED FOR REVISION	03/18/22	LMN	
71	ISSUED FOR REVISION	03/18/22	LMN	
72	ISSUED FOR REVISION	03/18/22	LMN	
73	ISSUED FOR REVISION	03/18/22	LMN	
74	ISSUED FOR REVISION	03/18/22	LMN	
75	ISSUED FOR REVISION	03/18/22	LMN	
76	ISSUED FOR REVISION	03/18/22	LMN	
77	ISSUED FOR REVISION	03/18/22	LMN	
78	ISSUED FOR REVISION	03/18/22	LMN	
79	ISSUED FOR REVISION	03/18/22	LMN	
80	ISSUED FOR REVISION	03/18/22	LMN	
81	ISSUED FOR REVISION	03/18/22	LMN	
82	ISSUED FOR REVISION	03/18/22	LMN	
83	ISSUED FOR REVISION	03/18/22	LMN	
84	ISSUED FOR REVISION	03/18/22	LMN	
85	ISSUED FOR REVISION	03/18/22	LMN	
86	ISSUED FOR REVISION	03/18/22	LMN	
87	ISSUED FOR REVISION	03/18/22	LMN	
88	ISSUED FOR REVISION	03/18/22	LMN	
89	ISSUED FOR REVISION	03/18/22	LMN	
90	ISSUED FOR REVISION	03/18/22	LMN	
91	ISSUED FOR REVISION	03/18/22	LMN	
92	ISSUED FOR REVISION	03/18/22	LMN	
93	ISSUED FOR REVISION	03/18/22	LMN	
94	ISSUED FOR REVISION	03/18/22	LMN	
95	ISSUED FOR REVISION	03/18/22	LMN	
96	ISSUED FOR REVISION	03/18/22	LMN	
97	ISSUED FOR REVISION	03/18/22	LMN	
98	ISSUED FOR REVISION	03/18/22	LMN	
99	ISSUED FOR REVISION	03/18/22	LMN	
100	ISSUED FOR REVISION	03/18/22	LMN	

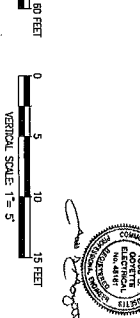


- NOTES:
1. THE UTILITIES AND FEATURES SHOWN HEREON ARE BASED ON RECORD DRAWINGS AND FIELD SURVEY DATA. THE CONTRACTOR SHALL VERIFY THE LOCATION AND DEPTH OF ALL UTILITIES THROUGHOUT THE PROJECT. THE CONTRACTOR SHALL BE RESPONSIBLE FOR THE PROTECTION OF ALL UTILITIES THROUGHOUT THE PROJECT. CALL BEFORE YOU DIG.
 2. ALL VERTICAL CURVES ARE 300' UNLESS OTHERWISE NOTED.
 3. WORK FROM MANHOLE 14 TO MANHOLE 18 NOT IN THIS CONTRACT.
 4. SOMEWHAT COMMUNICATION CONDUITS SHALL BE ROUTED ONLY TO SOMEWHAT COMMUNICATION MANHOLES. ONLY SOMEWHAT COMMUNICATION CONDUITS.

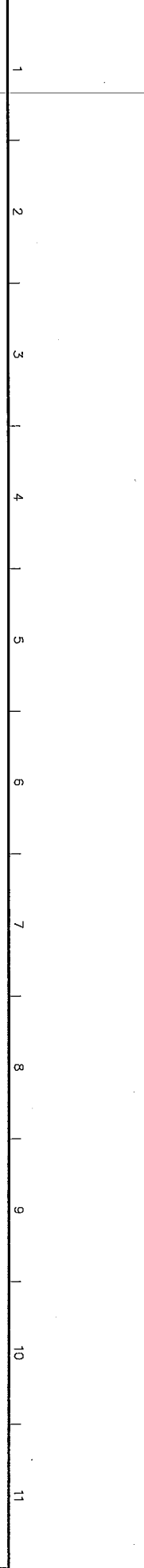
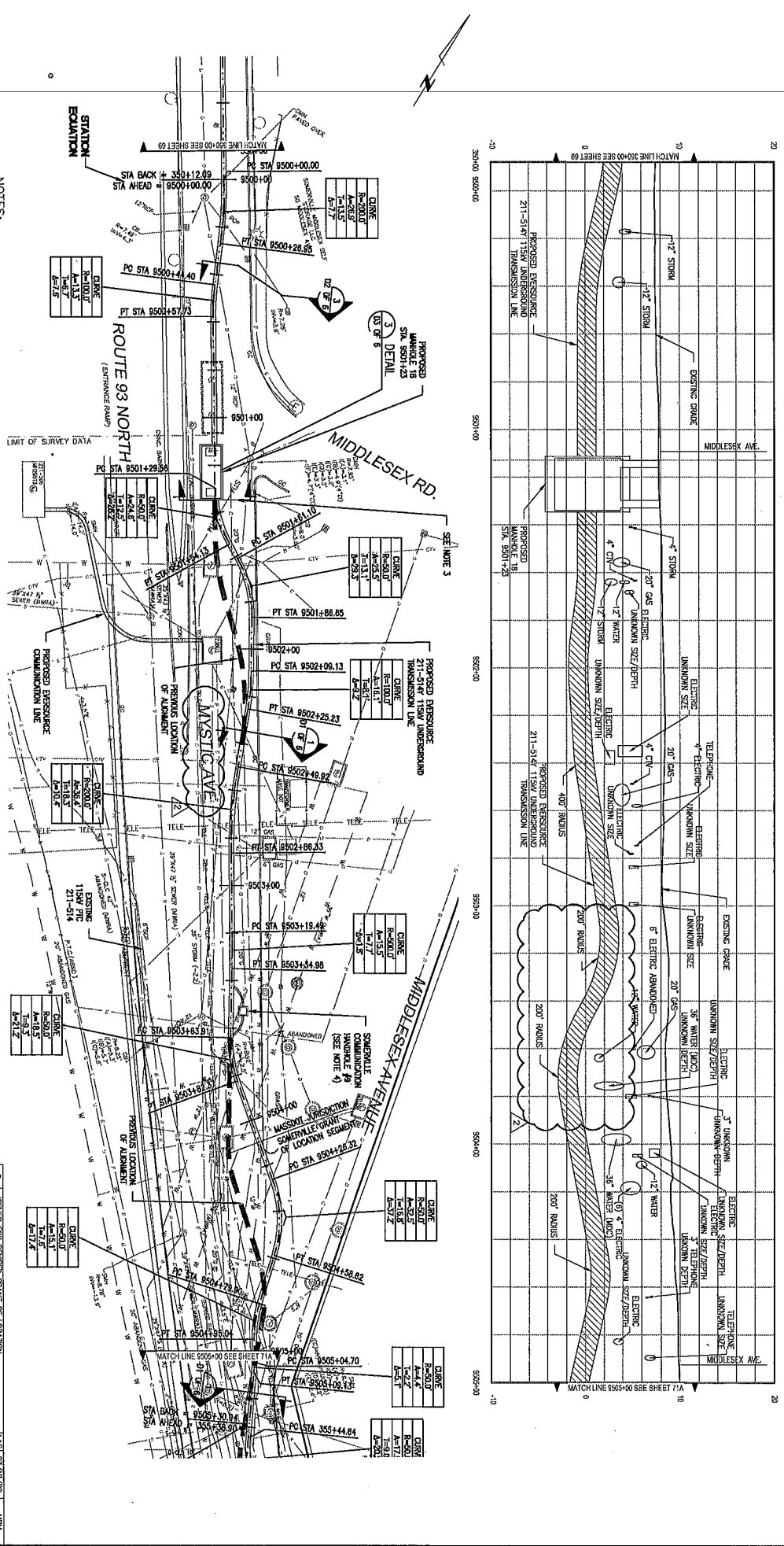
NOTICE OF LIMITED RESPONSIBILITY:

THE PROFESSIONAL ENGINEER DISCLOSES ALL RESPONSIBILITY FOR ALL WORK PERFORMED BY ANY COMPANY OR INDIVIDUAL NOT EMPLOYED BY EVERSOURCE ENERGY, INC. IS LIMITED TO THE DESIGN WORK PERFORMED BY EVERSOURCE ENERGY, INC. ON THE PROJECT DURING AND AFTER THE DESIGN. THE DESIGN IS LIMITED TO THE DESIGN WORK PERFORMED BY EVERSOURCE ENERGY, INC. ON THE PROJECT DURING AND AFTER THE DESIGN. THE DESIGN IS LIMITED TO THE DESIGN WORK PERFORMED BY EVERSOURCE ENERGY, INC. ON THE PROJECT DURING AND AFTER THE DESIGN.

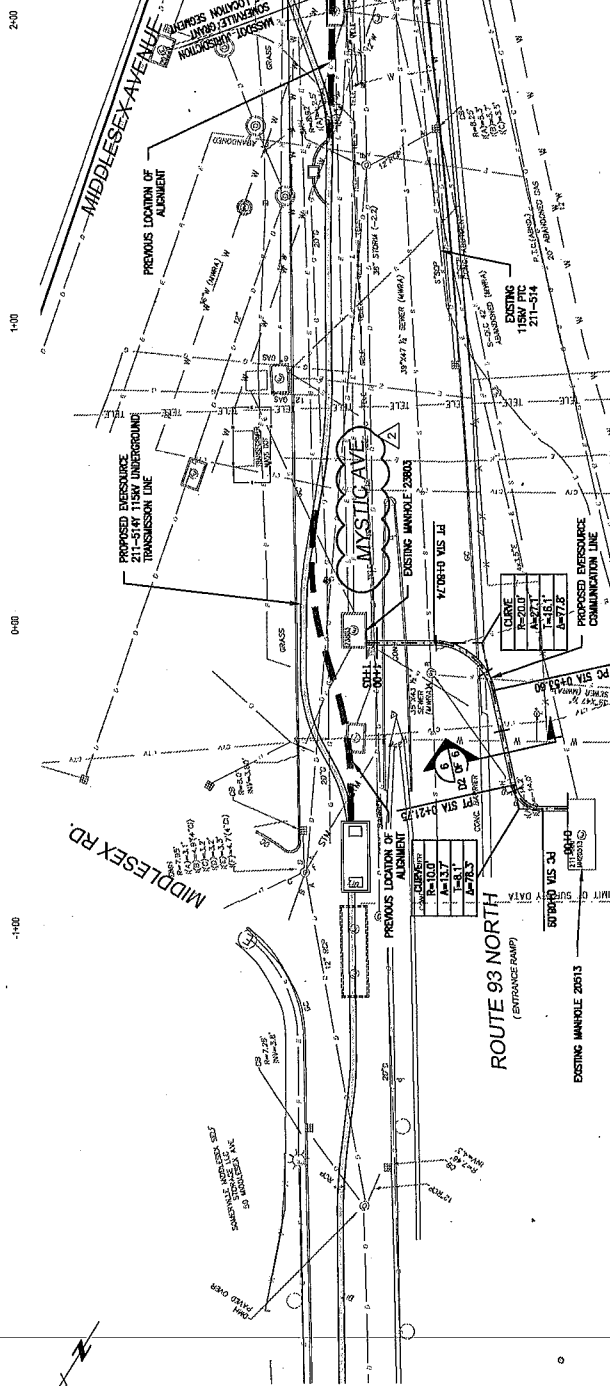
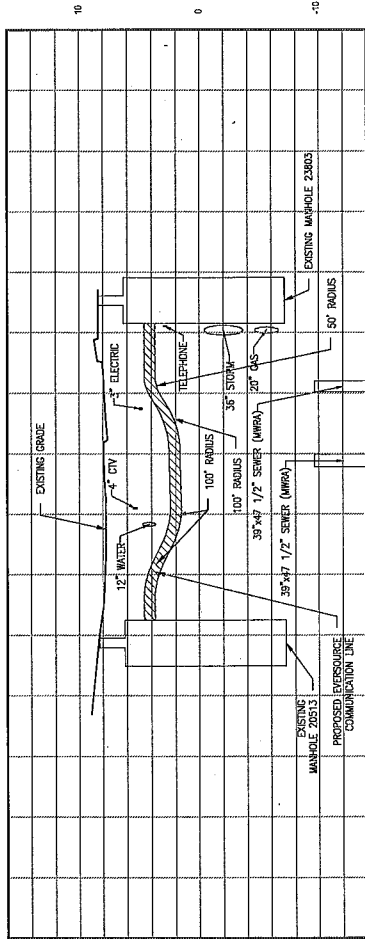
PLAN AND PROFILE STA 350+00 TO 9505+00
LINE 211-514+V WOBURN STATION 211 TO MYSTIC STATION 250
WOBURN CHARLESTOWN, MASSACHUSETTS
SCALE: HORIZ. 1"=20' V. 1"=5'
DATE: 6/09/17
DRAWN: C.H.D. APPR: J.M.L.
SHEET: 70A OF 79



NO.	REVISION	DATE	BY	APPR.
1	ISSUED FOR REVISION	03/19/22	LM	
2	ISSUED FOR REVISION	03/19/22	LM	
3	ISSUED FOR REVISION	03/19/22	LM	
4	ISSUED FOR REVISION	03/19/22	LM	
5	ISSUED FOR REVISION	03/19/22	LM	
6	ISSUED FOR REVISION	03/19/22	LM	
7	ISSUED FOR REVISION	03/19/22	LM	
8	ISSUED FOR REVISION	03/19/22	LM	
9	ISSUED FOR REVISION	03/19/22	LM	
10	ISSUED FOR REVISION	03/19/22	LM	
11	ISSUED FOR REVISION	03/19/22	LM	



1 2 3 4 5 6 7 8 9 10 11



NOTES:

1. THE UTILITIES AND FEATURES SHOWN HEREON ARE BASED ON THE RECORD DRAWINGS AND FIELD SURVEY. THE CONTRACTOR SHALL VERIFY THE LOCATION AND DEPTH OF ALL UTILITIES PRIOR TO CONSTRUCTION. THE CONTRACTOR SHALL BE RESPONSIBLE FOR THE PROTECTION OF ALL UTILITIES. THE CONTRACTOR SHALL BE RESPONSIBLE FOR THE PROTECTION OF ALL UTILITIES. THE CONTRACTOR SHALL BE RESPONSIBLE FOR THE PROTECTION OF ALL UTILITIES.
2. ALL VERTICAL CURVES ARE 300' UNLESS OTHERWISE NOTED.
3. WORK FROM MANHOLE 14 TO MANHOLE 18 NOT IN THIS CONTRACT.
4. SOMEVILLE COMMUNICATION CONDUITS SHALL BE ROUTED ONLY TO SOMEVILLE COMMUNICATION MANHOLES. ONLY SOMEVILLE COMMUNICATION CONDUITS SHALL BE ROUTED ONLY TO SOMEVILLE COMMUNICATION MANHOLES.

EVERSOURCE ENERGY

PLAN AND PROFILE STA 0+00 TO 1+03

COMMUNICATION LINE FROM MANHOLE 20513 TO MANHOLE 20511

WOBURN CHARLESTOWN, MASSACHUSETTS

DATE 08/09/17 BY C.H.K.D. A.P.P. REV. 2

SCALE: HORIZONTAL 1" = 20' VERTICAL 1" = 5'

811 or 1-888-344-7233

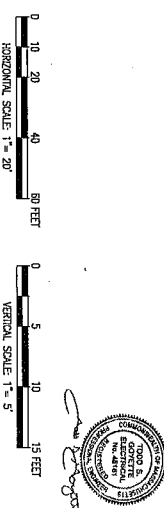
POWER ENGINEERS



MASSACHUSETTS 911
811 OF 1-888-344-7233

- NOTES:
1. ALL UTILITIES AND FEATURES SHOWN HEREON ARE BASED ON FIELD SURVEYS, AERIAL PHOTOGRAPHY, AND RECORD DOCUMENTS. OTHER FACILITIES MAY BE LOCATED BY THE CONTRACTOR SHALL VERIFY THE EXACT LOCATION, BOTH HORIZONTAL AND VERTICAL, OF ALL UTILITIES AND FEATURES BEFORE ANY CONSTRUCTION.
 2. ALL VERTICAL CURVES ARE 500' UNLESS OTHERWISE NOTED.

- NOTICE OF LIMITED RESPONSIBILITY:
1. THE PROFESSIONAL ENGINEER'S RESPONSIBILITY FOR THIS DESIGN IS LIMITED TO THE DESIGN WORK PERFORMED BY POWER ENGINEERS, INC. SHOWN ON THE PROJECT DRAWINGS AND REVISIONS. IT DOES NOT APPLY TO THE REVISIONS ATTACHED TO THE DRAWINGS THEREAFTER.
 2. THE PROFESSIONAL ENGINEER DISCLAIMS ALL RESPONSIBILITY FOR ALL WORK PERFORMED BY ANY COMPANY OR INDIVIDUAL NOT CONTROLLED BY POWER ENGINEERS, INC. SHOWN ON THE PROJECT DRAWINGS AND REVISIONS. ANY OTHER DOCUMENTS ASSOCIATED WITH THE PROJECT, WHICH DO NOT BEAR HIS/HER SEAL AND SIGNATURE, AND ANY WORK DONE UNDER SUBSEQUENT REVISIONS.

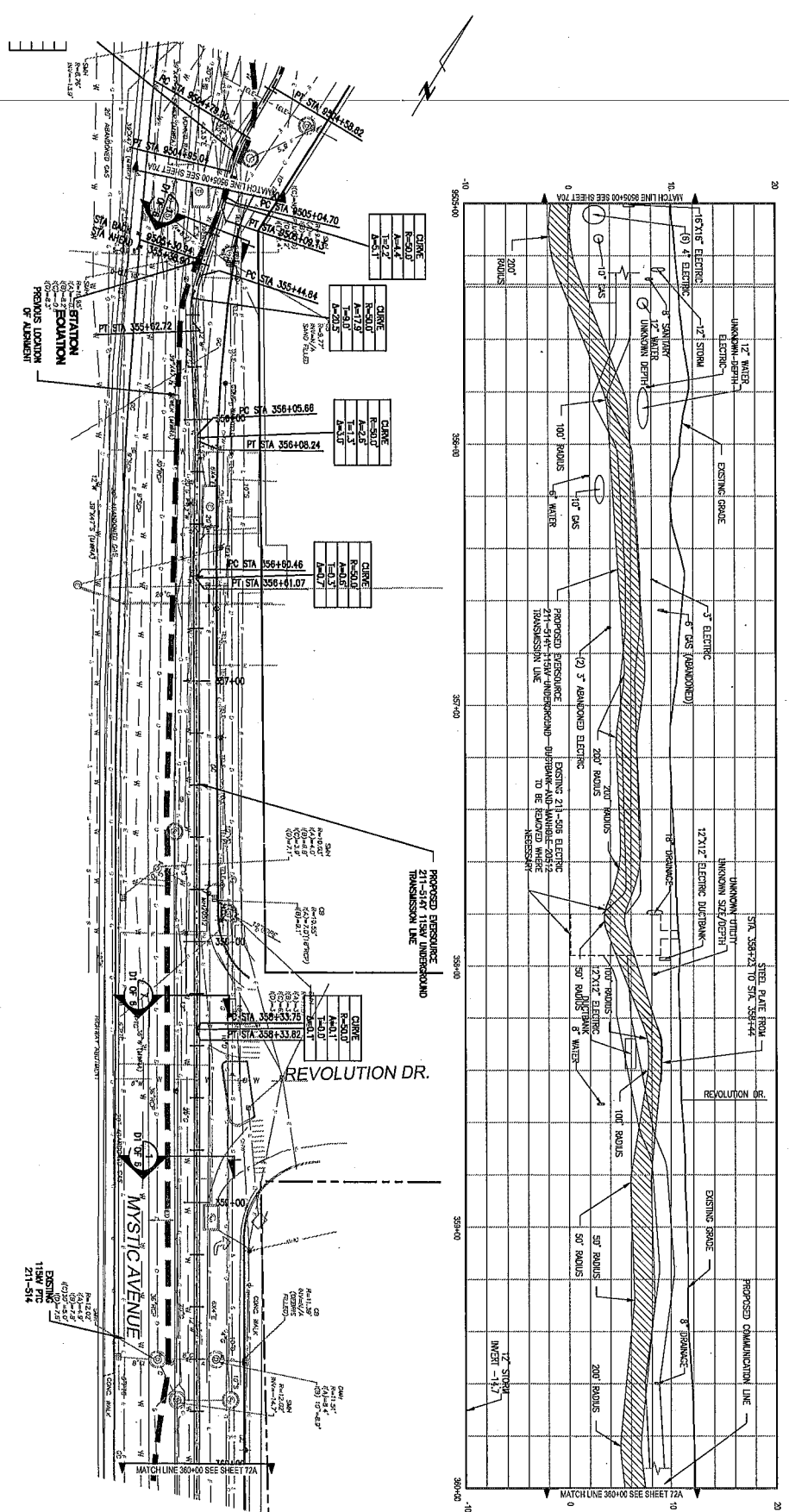


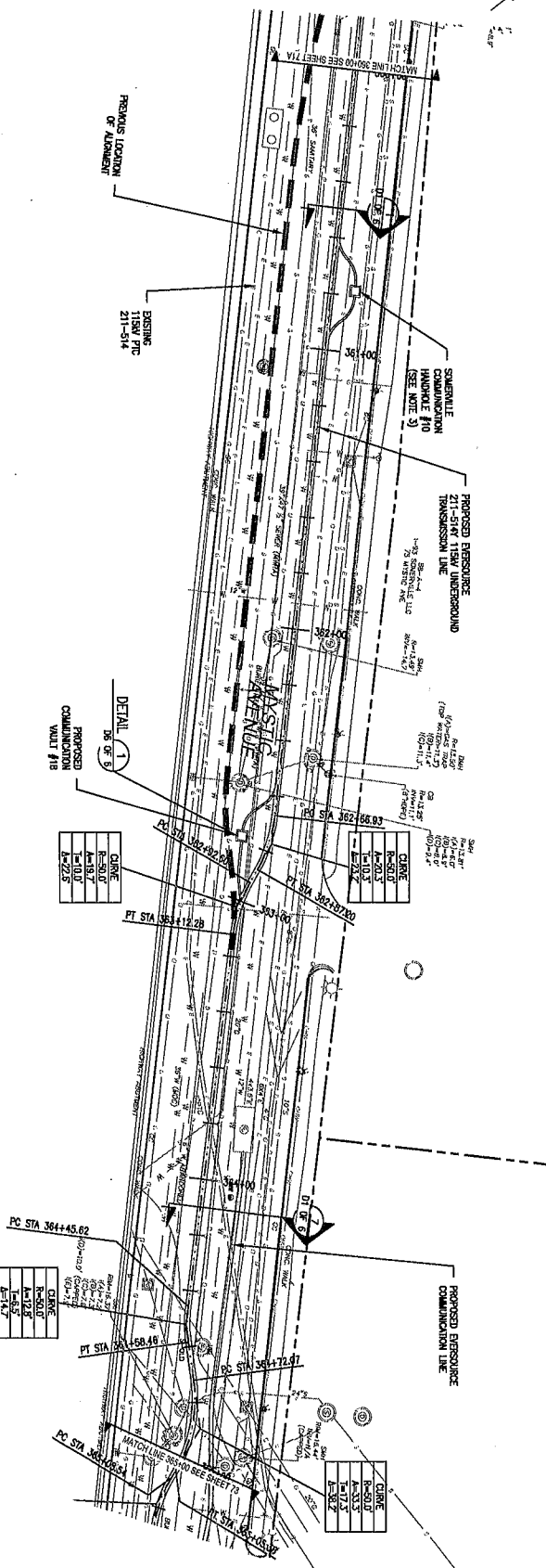
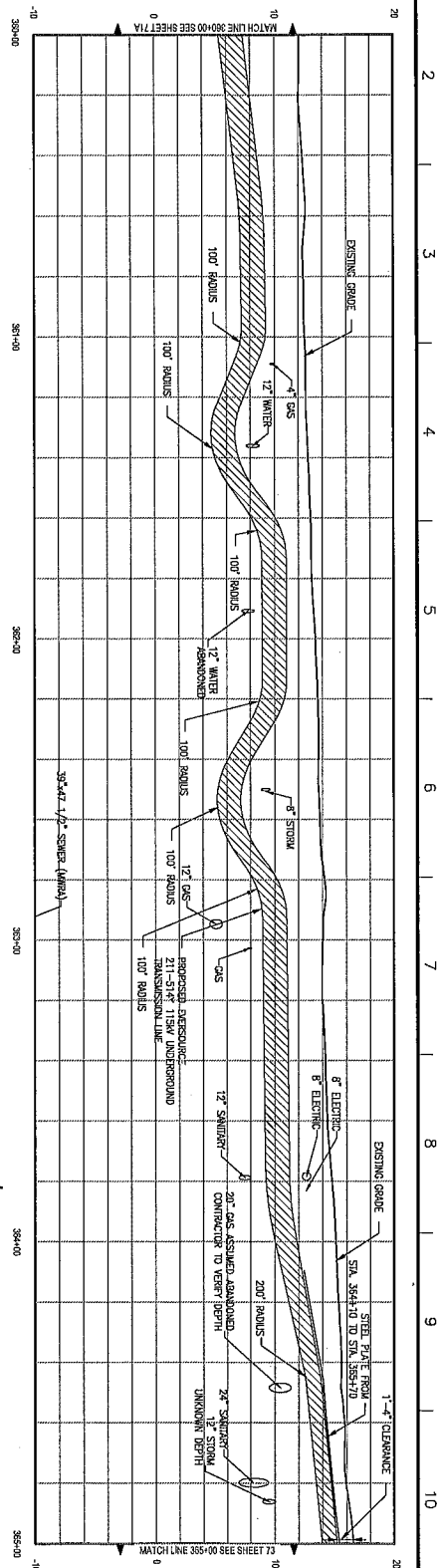
REVISION			
1	ISSUED FOR REVISION GRANT OF LOCATION	1.651 03/26/22	MM
2	ISSUED FOR REVISION GRANT OF LOCATION	1.651 03/26/22	MM
3	ISSUED FOR REVISION GRANT OF LOCATION	1.651 03/26/22	MM
4	ISSUED FOR REVISION GRANT OF LOCATION	1.651 03/26/22	MM
5	ISSUED FOR REVISION GRANT OF LOCATION	1.651 03/26/22	MM
6	ISSUED FOR REVISION GRANT OF LOCATION	1.651 03/26/22	MM
7	ISSUED FOR REVISION GRANT OF LOCATION	1.651 03/26/22	MM
8	ISSUED FOR REVISION GRANT OF LOCATION	1.651 03/26/22	MM
9	ISSUED FOR REVISION GRANT OF LOCATION	1.651 03/26/22	MM
10	ISSUED FOR REVISION GRANT OF LOCATION	1.651 03/26/22	MM
11	ISSUED FOR REVISION GRANT OF LOCATION	1.651 03/26/22	MM

PLAN AND PROFILE STA 3505+00 TO 3504+00
115KV UNDERGROUND TRANSMISSION LINE
WOBURN CHARLESTOWN, MASSACHUSETTS
DATE DRAWN 03/22 APPR. 03/22
SCALE: HORIZ. 1"=20' VERT. 1"=5'

EVERSOURCE ENERGY

DRAWING NO. 71 OF 79 REV. 2





POWER ENGINEERS
 811 or 1-888-344-7233
 MASSACHUSETTS 811
 TOLL FREE

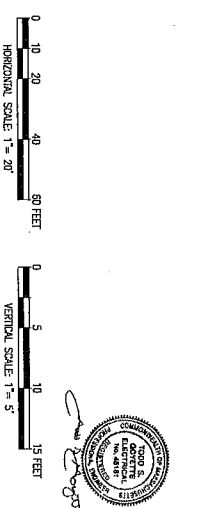
NOTES:
 1. ALL DIMENSIONS AND ELEVATIONS SHOWN HEREON ARE BASED ON FIELD SURVEYS, AERIAL PHOTOGRAPHY AND RECORD DOCUMENTS. OTHER FACTORS MAY EXIST NOT DISCOVERED BY THE ENGINEER. THE ENGINEER SHALL BE RESPONSIBLE FOR VERIFYING THE EXISTING LOCATION, BOTH HORIZONTAL AND VERTICAL, OF ALL UTILITIES THROUGH THE APPROPRIATE RECORDS. DATE BEFORE YOU DIG - 1-888-344-7233.

2. ALL VERTICAL CURVES ARE 500' UNLESS OTHERWISE NOTED.

3. SUBMITTAL COMMUNICATIONS SHALL BE ROUTED TO THE ENGINEER. SUBMITTAL COMMUNICATIONS SHALL ONLY CONTAIN SUBMITTAL COMMUNICATIONS.

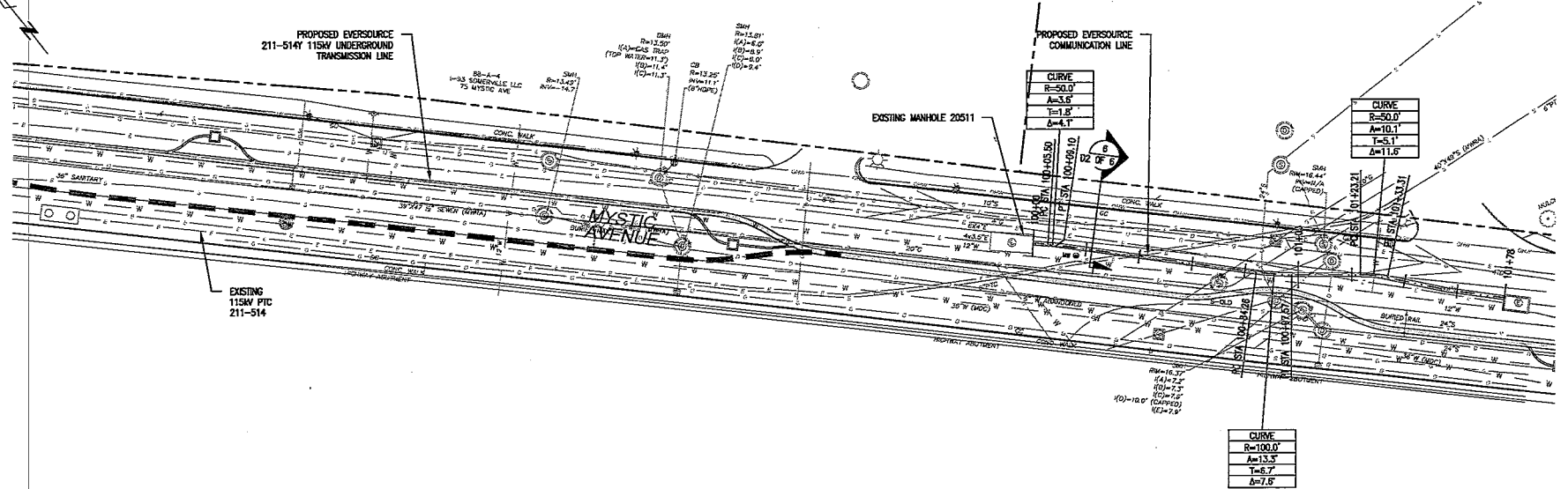
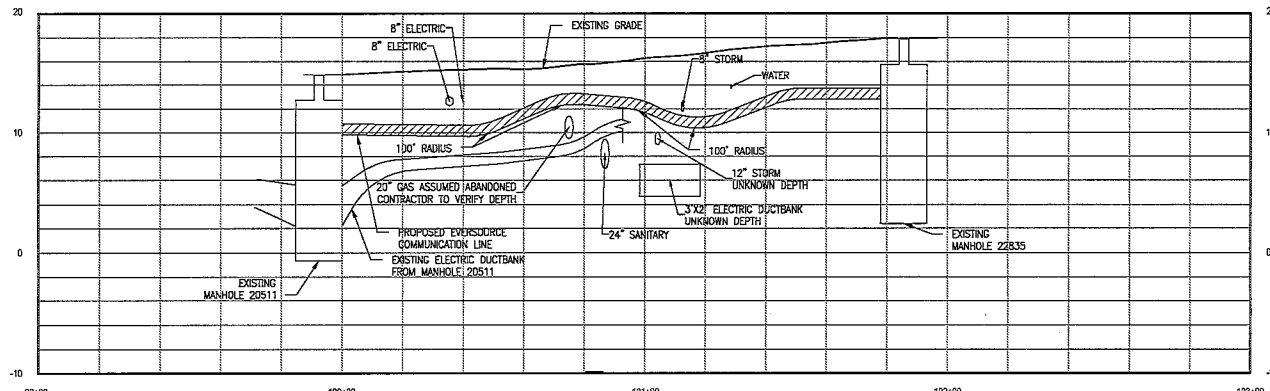
NOTICE OF LIMITED RESPONSIBILITY:
 1. THE PROFESSIONAL ENGINEER'S LIABILITY IS LIMITED TO THE DESIGN AND CONSTRUCTION OF THE PROJECT. THE ENGINEER SHALL NOT BE RESPONSIBLE FOR THE DESIGN OR CONSTRUCTION OF ANY OTHER WORK PERFORMED BY OTHERS. THE ENGINEER SHALL NOT BE RESPONSIBLE FOR THE DESIGN OR CONSTRUCTION OF ANY OTHER WORK PERFORMED BY OTHERS. THE ENGINEER SHALL NOT BE RESPONSIBLE FOR THE DESIGN OR CONSTRUCTION OF ANY OTHER WORK PERFORMED BY OTHERS.

2. THE PROFESSIONAL ENGINEER'S LIABILITY IS LIMITED TO THE DESIGN AND CONSTRUCTION OF THE PROJECT. THE ENGINEER SHALL NOT BE RESPONSIBLE FOR THE DESIGN OR CONSTRUCTION OF ANY OTHER WORK PERFORMED BY OTHERS. THE ENGINEER SHALL NOT BE RESPONSIBLE FOR THE DESIGN OR CONSTRUCTION OF ANY OTHER WORK PERFORMED BY OTHERS. THE ENGINEER SHALL NOT BE RESPONSIBLE FOR THE DESIGN OR CONSTRUCTION OF ANY OTHER WORK PERFORMED BY OTHERS.



REVISION			
NO.	DESCRIPTION	DATE	BY
1	ISSUED FOR REVISION	03/21/22	WJ
2	ISSUED FOR REVISION	03/21/22	WJ
3	ISSUED FOR REVISION	03/21/22	WJ
4	ISSUED FOR REVISION	03/21/22	WJ
5	ISSUED FOR REVISION	03/21/22	WJ
6	ISSUED FOR REVISION	03/21/22	WJ
7	ISSUED FOR REVISION	03/21/22	WJ
8	ISSUED FOR REVISION	03/21/22	WJ
9	ISSUED FOR REVISION	03/21/22	WJ
10	ISSUED FOR REVISION	03/21/22	WJ
11	ISSUED FOR REVISION	03/21/22	WJ

EVERSOURCE ENERGY
 PLAN AND PROFILE STA 350+00 TO 365+00
 115KV UNDERGROUND TRANSMISSION LINE
 WOUBURN CHARLESTOWN, MASSACHUSETTS
 SCALE: HORIZONTAL 1"=20' VERTICAL 1"=5'
 DATE: 6/29/17
 DRAWING NO.: 72A OF 75
 REV.: 2



NOTES:

1. THE UTILITIES AND FEATURES SHOWN HEREON ARE BASED ON FIELD SURVEYS, AERIAL PHOTOGRAPHY AND RECORD DOCUMENTS. OTHER FACILITIES MAY EXIST NOT DISCOVERED THROUGH THE RECORD CHECK. THE CONTRACTOR SHALL VERIFY THE EXACT LOCATION, BOTH HORIZONTAL AND VERTICAL, OF ALL UTILITIES THROUGH THE APPROPRIATE UTILITY COMPANIES. CALL BEFORE YOU DIG ~ 1-888-344-7233.
2. ALL VERTICAL CURVES ARE 500' UNLESS OTHERWISE NOTED.
3. SOMERVILLE COMMUNICATION CONDUITS SHALL BE ROUTED ONLY TO SOMERVILLE COMMUNICATION HANDHOLES. SOMERVILLE COMMUNICATION HANDHOLES SHALL ONLY CONTAIN SOMERVILLE COMMUNICATION CONDUITS.

NOTICE OF LIMITED RESPONSIBILITY:

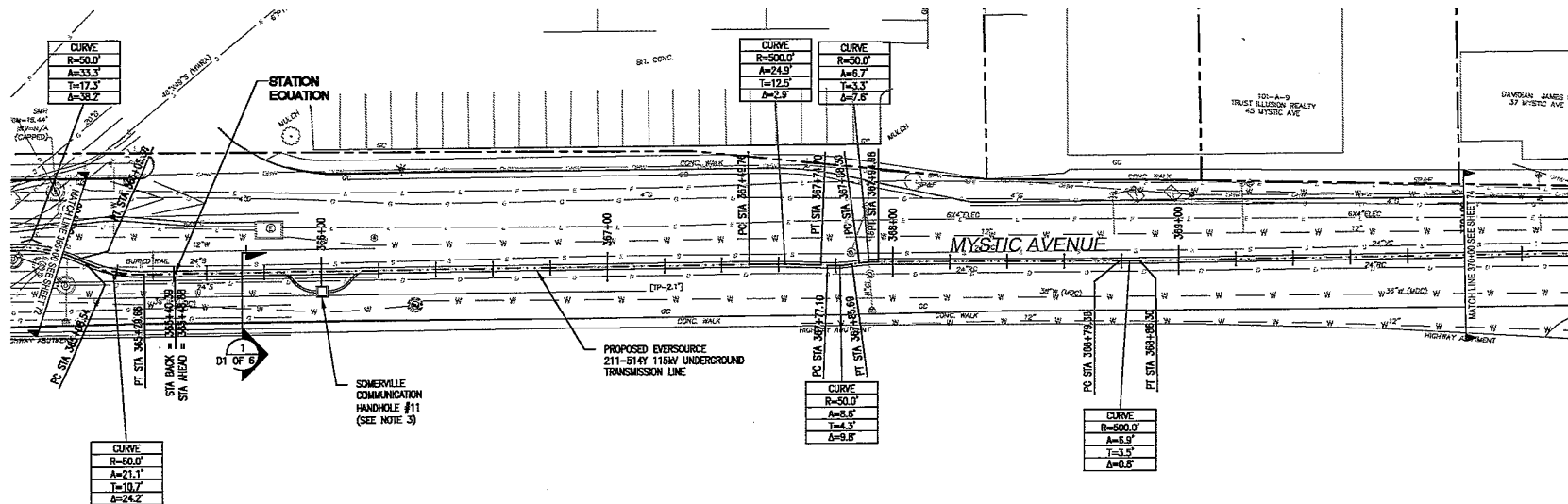
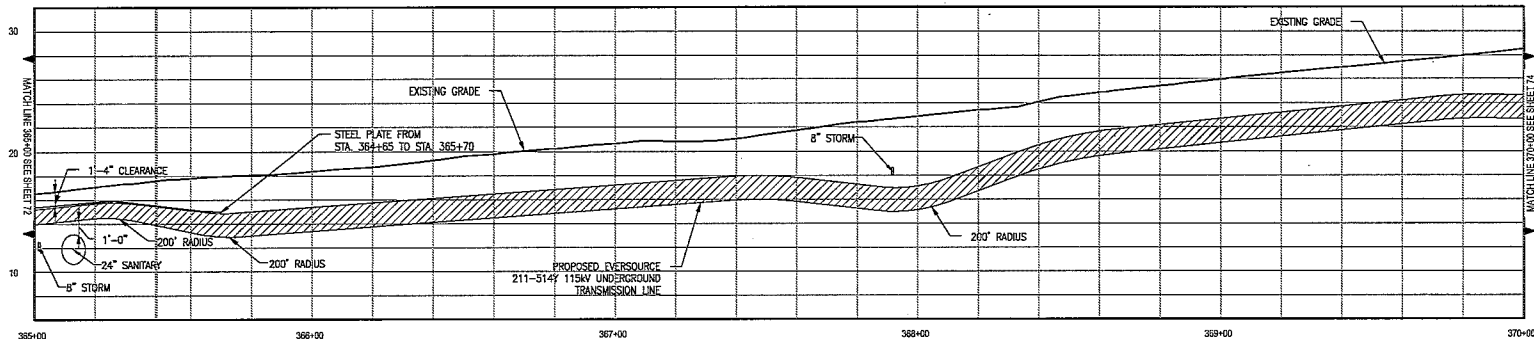
1. THE RESPONSIBILITY OF THE PROFESSIONAL ENGINEER WHOSE SEAL IS AFFIXED TO THIS DRAWING IS LIMITED TO THE DESIGN WORK PERFORMED BY POWER ENGINEERS, INC. SHOWN ON THE PROJECT DRAWINGS AND DOCUMENTS BEARING HIS/HER SEAL AND SIGNATURE. IT APPLIES TO REVISION 1 ONLY. IT DOES NOT APPLY TO THE REVISIONS AFFIXED TO THE DRAWING THEREAFTER.
2. THE PROFESSIONAL ENGINEER DISCLAIMS ALL RESPONSIBILITY FOR ALL WORK PERFORMED BY ANY COMPANY OR INDIVIDUAL NOT CONTRACTED BY OR EMPLOYED BY POWER ENGINEERS, INC. ALL DRAWINGS PROVIDED BY OTHERS TO DEVELOP THIS DESIGN, ANY OTHER DOCUMENTS ASSOCIATED WITH THE PROJECT, WHICH DO NOT BEAR HIS/HER SEAL AND SIGNATURE, AND ANY WORK DONE UNDER SUBSEQUENT REVISIONS.

THREE BUSINESS DAYS BEFORE YOU DIG CALL
MASSACHUSETTS 811
TOLL FREE
811 or 1-888-344-7233



HORIZONTAL SCALE: 1"= 20'
VERTICAL SCALE: 1"= 5'

NO.	DESCRIPTION	REVISION		
		DATE	BY	APP.
2	ISSUED FOR REVISED GRANT OF LOCATION	03/18/22	MRM	
1	ISSUED FOR REVISED GRANT OF LOCATION	02/09/22	MRM	
0	SHEET NOT IN PREVIOUS SUBMITTAL	03/20/21	MRM	
EVERSOURCE ENERGY PLAN AND PROFILE STA 100+00 TO 101+78 COMMUNICATION LINE FROM MANHOLE 20513 TO MANHOLE 20511 COMMUNICATION LINE WOBURN CHARLESTOWN, MASSACHUSETTS				
SCALE: unless noted H: 1"=20' V: 1"=5'		DATE	DRAWN	CHK'D
		8/09/17	STE	MM
		APPR.	DRAWING NO.	REV.
			72B OF 79	2

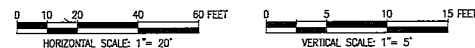


NOTES:

1. THE UTILITIES AND FEATURES SHOWN HEREON ARE BASED ON FIELD SURVEYS, AERIAL PHOTOGRAPHY AND RECORD DOCUMENTS. OTHER FACILITIES MAY EXIST NOT DISCOVERED THROUGH THE RECORD CHECK. THE CONTRACTOR SHALL VERIFY THE EXACT LOCATION, BOTH HORIZONTAL AND VERTICAL, OF ALL UTILITIES THROUGH THE APPROPRIATE UTILITY COMPANIES. CALL BEFORE YOU DIG - 1-800-344-7233.
2. ALL VERTICAL CURVES ARE 300' UNLESS OTHERWISE NOTED.
3. SOMERVILLE COMMUNICATION CONDUITS SHALL BE ROUTED ONLY TO SOMERVILLE COMMUNICATION HANDHOLES. SOMERVILLE COMMUNICATION HANDHOLES SHALL ONLY CONTAIN SOMERVILLE COMMUNICATION CONDUITS.

NOTICE OF LIMITED RESPONSIBILITY:

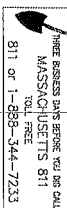
1. THE RESPONSIBILITY OF THE PROFESSIONAL ENGINEER WHOSE SEAL IS AFFIXED TO THIS DRAWING IS LIMITED TO THE DESIGN WORK PERFORMED BY POWER ENGINEERS, INC. SHOWN ON THE PROJECT DRAWINGS AND DOCUMENTS BEARING HIS/HER SEAL AND SIGNATURE. IT APPLIES TO REVISION 1 ONLY. IT DOES NOT APPLY TO THE REVISIONS AFFIXED TO THE DRAWING THEREAFTER.
2. THE PROFESSIONAL ENGINEER DISCLAIMS ALL RESPONSIBILITY FOR ALL WORK PERFORMED BY ANY COMPANY OR INDIVIDUAL NOT CONTRACTED BY OR EMPLOYED BY POWER ENGINEERS, INC. ALL DRAWINGS PROVIDED BY OTHERS TO DEVELOP THIS DESIGN, ANY OTHER DOCUMENTS ASSOCIATED WITH THE PROJECT, WHICH DO NOT BEAR HIS/HER SEAL AND SIGNATURE, AND ANY WORK DONE UNDER SUBSEQUENT REVISIONS.



2	ISSUED FOR REVISED GRANT OF LOCATION	LAS	03/18/22	MRM
1	ISSUED FOR REVISED GRANT OF LOCATION	BWF	02/09/22	MRM
0	ISSUED FOR REVISED GRANT OF LOCATION	BWF	03/29/21	MRM
N.D.	DESCRIPTION	B.Y.	DATE	APPR.
REVISION				
EVERSOURCE ENERGY				
PLAN AND PROFILE STA 365+00 TO 370+00				
LINE 211-514Y WOBURN STATION 211 TO MYSTIC STATION 250				
115kV UNDERGROUND TRANSMISSION LINE				
WOBURN CHARLESTOWN, MASSACHUSETTS				
SCALE: unless noted H: 1"=20' V: 1"=5'		DATE	DRAWN	CHKD.
		8/09/17	STE	MM
			APPR.	
			DRAWING NO.	REV.
			73 OF 79	2

THREE BUSINESS DAYS BEFORE YOU DIG CALL
MASSACHUSETTS 811
TOLL FREE
811 or 1-888-344-7233





NOTICE OF LIMITED RESPONSIBILITY:
1. THE RESPONSIBILITY OF THE PROFESSIONAL ENGINEER WHOSE SEAL IS AFFIXED TO THIS DRAWING IS LIMITED TO THE DESIGN WORK PERFORMED BY POWER ENGINEERS, INC. SHOWN ON THE PROJECT DRAWINGS AND DOCUMENTS BEARING HS/PER SEAL AND SIGNATURE. IT APPLIES TO REVISION 1 ONLY. IT DOES NOT APPLY TO THE REVISIONS AFFIXED TO THE DRAWING THEREAFTER.

2. THE PROFESSIONAL ENGINEER ASSUMES ALL RESPONSIBILITY FOR ALL WORK PERFORMED BY ANY COMPANY OR INDIVIDUAL NOT CONTRACTED BY OR EMPLOYED BY POWER ENGINEERS, INC., ALL DRAWINGS PROVIDED BY OTHERS TO DEVELOP THIS DESIGN, ANY OTHER DOCUMENTS ASSOCIATED WITH THE PROJECT, WHICH DO NOT BEAR HIS/HER SEAL AND SIGNATURE, AND ANY WORK DONE UNDER SUBSEQUENT REVISIONS.



ENERGY

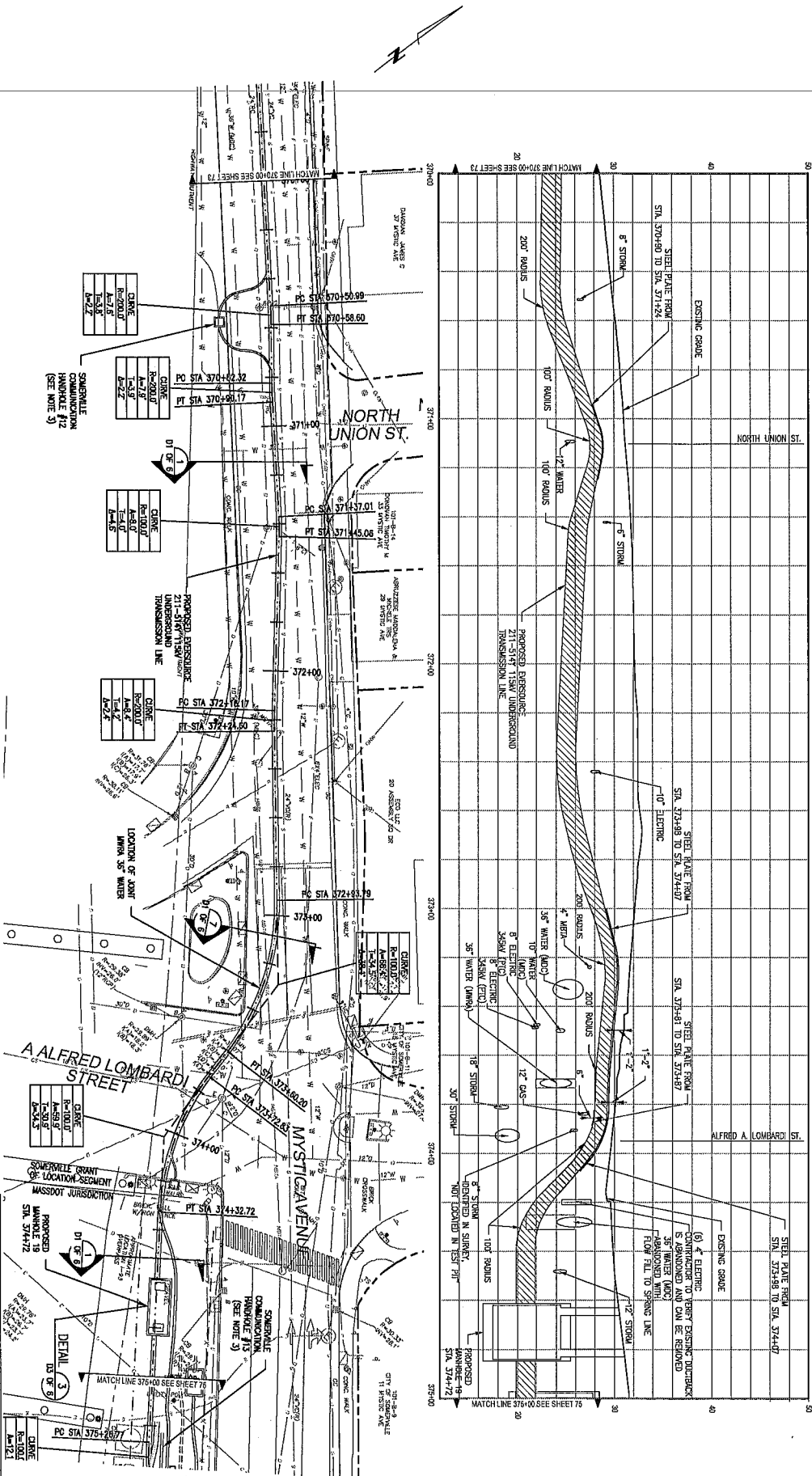
PLAN AND PROFILE STA 370+00 TO 375+00
514V MOBILEN STATION 211 TO MYSTIC STATION

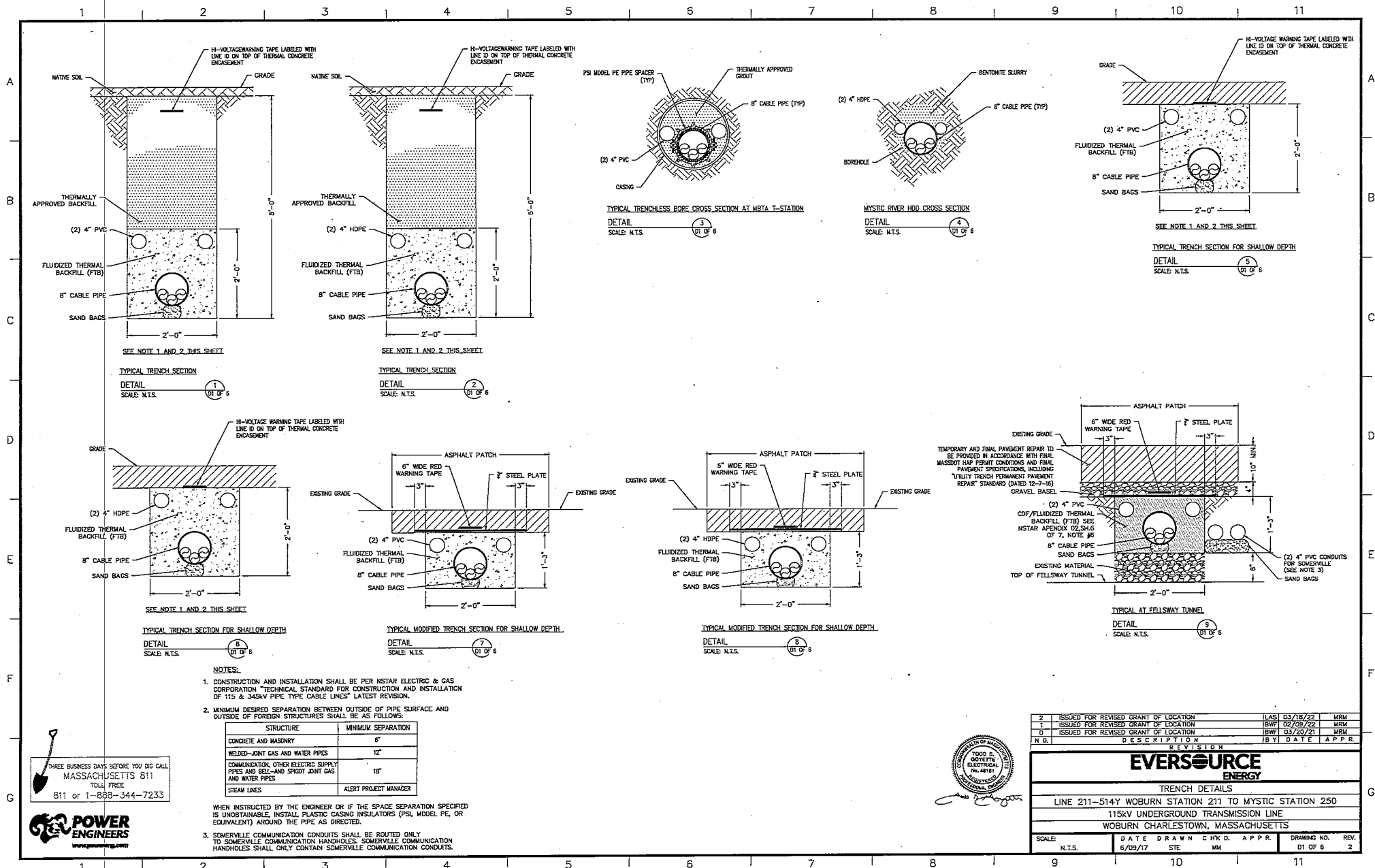
115kV UNDERGROUND TRANSMISSION LINE
WOBUEN CHARLESTOWN, MASSACHUSETTS

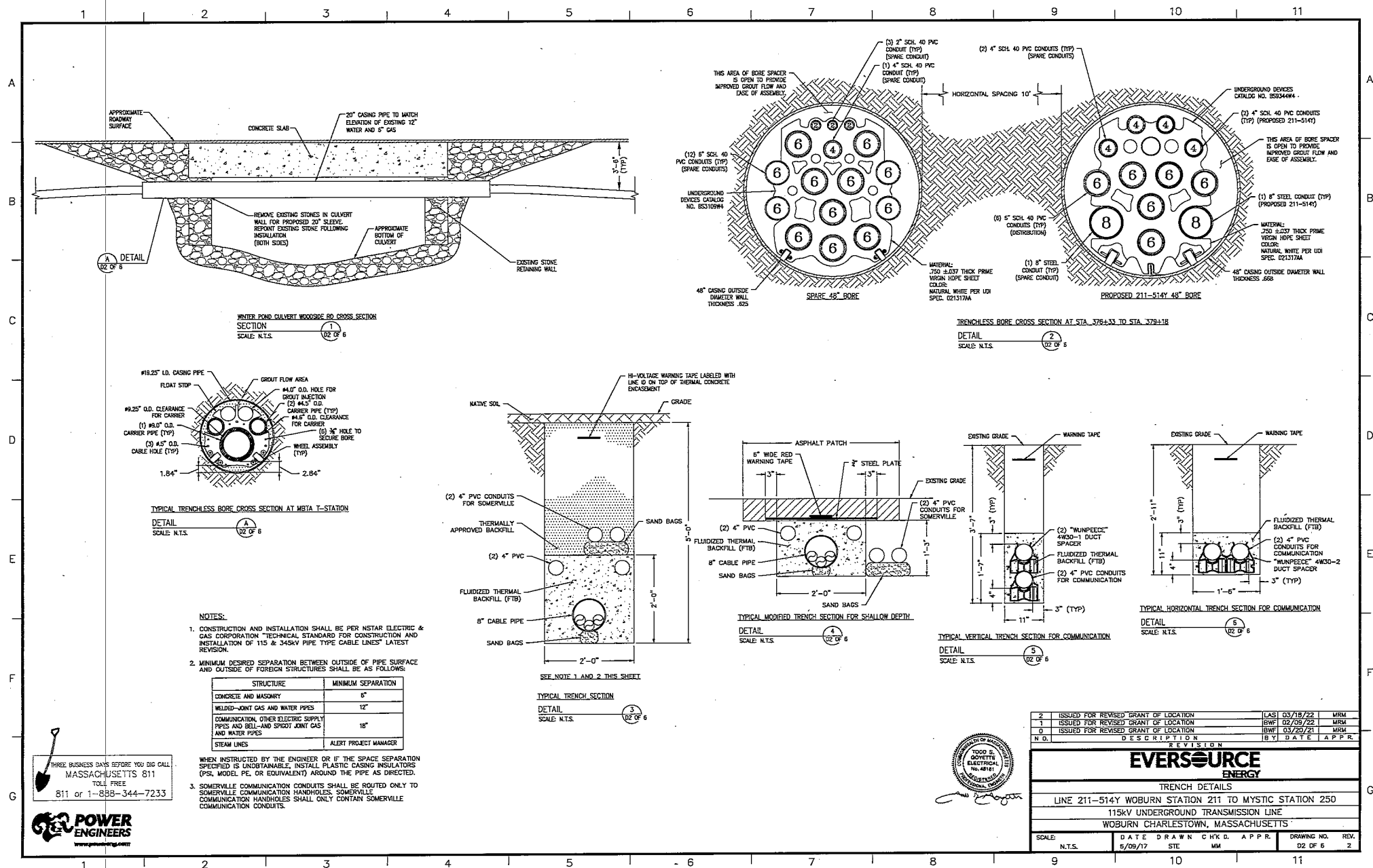
DATE	DRAWN	CHK'D.	APP'R.
6/09/17	STF	MM	

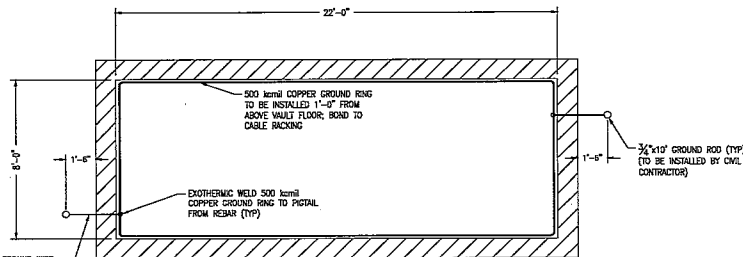
DRAWING NO. 74 OF 79

REVISION		DATE	BY	APPROVED
2	ISSUED FOR REVISED GRANT OF LOCATION	BAF 02/18/22		MRM
1	ISSUED FOR REVISED GRANT OF LOCATION	BAF 02/09/22		MRM
0	ISSUED FOR REVISED GRANT OF LOCATION	BAF 03/20/21		MRM
NO.	DESCRIPTION			

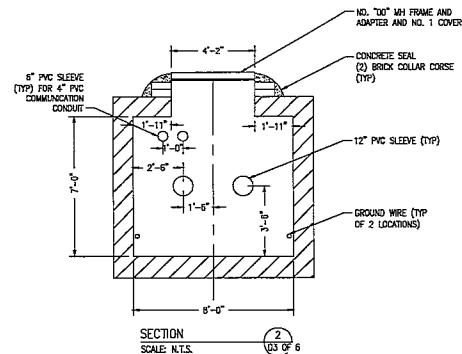




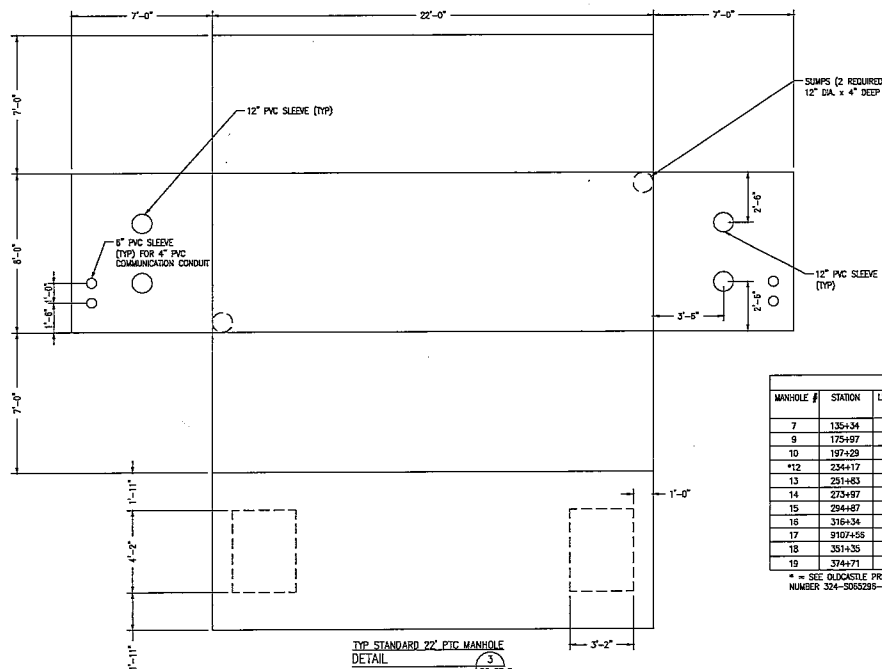




TYP. MANHOLE GROUNDING DETAIL
SCALE: N.T.S. 03 OF 6



SECTION
SCALE: N.T.S. 03 OF 6



TYP. STANDARD 22' P.T.C. MANHOLE DETAIL
SCALE: N.T.S. 03 OF 6

MANHOLE CHART				
MANHOLE #	STATION	LENGTH (feet)	WIDTH (feet)	MAX. WALL THICKNESS (inches)
7	135+34	22	8	12"
9	175+97	22	8	12"
10	197+29	22	8	12"
*12	234+17	20	6	8"
13	251+83	22	8	12"
14	253+87	22	8	12"
15	294+87	22	8	12"
16	316+34	22	8	12"
17	3107+58	22	8	12"
18	351+35	22	8	12"
19	374+71	22	8	12"

* = SEE QUONSETT PRECAST DETAIL DRAWING NUMBER 304-S00028-001 FOR MANHOLE DETAIL

NOTES:

1. THE FABRICATOR SHALL DESIGN THE PRECAST CONCRETE MANHOLES IN ACCORDANCE WITH AED-318 AND ASHTO LOAD FACTOR DESIGN METHOD.
2. ALL MANHOLE DESIGN DRAWINGS SHALL BE STAMPED BY A REGISTERED PROFESSIONAL ENGINEER IN THE COMMONWEALTH OF MASSACHUSETTS.
3. CONCRETE SHALL BE A MINIMUM STRENGTH OF 3000 PSI AT 28 DAYS.
4. ALL CONCRETE MEMBERS SHALL BE A MINIMUM THICKNESS OF 6 INCHES.
5. REINFORCING STEEL SHALL BE ASTM A 615 GRADE 60.
6. PLASTIC SLEEVES SHALL BE 12 INCH DIAMETER SCHEDULE 40 PVC SLEEVES ON OPPOSITE WALLS SHALL BE ALLOWED TO ALLOW A SINGLE PIPE TO BE INSTALLED CONTINUOUSLY THROUGH BOTH SLEEVES.
7. THE MANHOLE SHALL BE FABRICATED IN TWO PIECES FOR FIELD ASSEMBLY. ALL JOINTS SHALL INCLUDE A WATER-TIGHT SEAL DESIGN.
8. DESIGN ASSUMPTIONS SHALL BE AS FOLLOWS:
GROUNDWATER DEPTH: 8 FT. MAX. 3 FT. MIN. BELOW FINISH GRADE
EARTH COVER: 3 FT. MAX. 1 FT. 6 IN. MIN. BELOW FINISH GRADE
COEFFICIENT OF EARTH AT REST: K=0.50
DRY DRAIN DENSITY: 120 PCF
SATURATED EARTH DENSITY: 57.8 PCF
DESIGN TRUCK: ASHTO M20-S15
9. MANHOLE SHALL HAVE POSITIVE RESTRAINT FOR WATER FLOTATION.
10. DESIGN DRAWING AND CALCULATIONS SHALL BE SUBMITTED TO EVERSOURCE ENERGY FOR REVIEW. ALLOW TWO WEEKS FOR EVERSOURCE ENERGY COMMENTS BEFORE STARTING MANHOLE FABRICATION.
11. THE EXTERIOR SURFACES OF THE MANHOLE SHALL BE COVERED WITH A DAMPROOFING COATING.
12. ALL DIMENSIONS ARE INSIDE DIMENSIONS, UNLESS OTHERWISE NOTED IN MANHOLE CHART.

PRECAST CONCRETE MANHOLE INSTALLATION:

1. THE TWO PIECE PRECAST MANHOLE SHALL BE INSTALLED IN ACCORDANCE WITH THE FABRICATOR'S DRAWINGS AND INSTRUCTIONS.
2. THE JOINT BETWEEN MANHOLE SECTIONS SHALL BE SEALED WATER-TIGHT.
3. THE ANNULAR SPACE BETWEEN THE STEEL PIPE AND THE PVC SLEEVE SHALL BE SEALED WITH A MODEL "C" LINK-SEAL MODULAR SEAL.
4. A HOLE SHALL BE CORE DRILLED IN THE MANHOLE WALLS FOR THE 3 INCH CONDUIT. THE CONDUIT PENETRATION SHALL BE SEALED WITH SILICON CAULKING.
5. STANDARD MANHOLE DEPTH SHALL INCLUDE SPACE FOR TWO BRICK COLLAR, WHERE DEPTHS MUST BE GREATER, THE HEIGHT OF THE BRICK COLLAR SHALL BE INCREASED OR A CONCRETE CHIMNEY INSTALLED.
6. SEE THE FOLLOWING NISTAR ELECTRIC STANDARDS FOR DETAILS OF:
NO. 1 MANHOLE COVER: M1300
NO. 00 MANHOLE FRAME: M1305
ADAPTER FOR NO. 00 MANHOLE FRAME: M13006
7. CONTRACTOR TO GROUT UNUSED SLEEVES TO SEAL MANHOLE WATER-TIGHT.

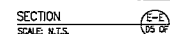
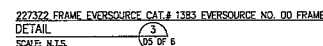
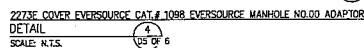
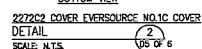
THREE BUSINESS DAYS BEFORE YOU DIG CALL
MASSACHUSETTS 811
TOLL FREE
811 or 1-888-344-7233



REVISION		DATE	APP'R.
2	ISSUED FOR REVISED GRANT OF LOCATION	03/18/22	MRM
1	ISSUED FOR REVISED GRANT OF LOCATION	02/09/22	MRM
0	ISSUED FOR REVISED GRANT OF LOCATION	03/20/21	MRM
DESCRIPTION		DATE	APP'R.
EVERSOURCE ENERGY STANDARD MANHOLE DETAILS LINE 211-514Y WOBURN STATION 211 TO MYSTIC STATION 250 115KV UNDERGROUND TRANSMISSION LINE WOBURN CHARLESTOWN, MASSACHUSETTS			
SCALE:	DATE DRAWN	CHECKED	APPROVED
N.T.S.	5/09/17	STE	MM
			D3 OF 6 2




TYP GROUND WIRE DETAIL
DETAIL
SCALE: N.T.S.



2	ISSUED FOR REVISION GRANT OF LOCATION	ILAS	03/18/22	WRM
1	ISSUED FOR REVISION GRANT OF LOCATION	IBWF	02/09/22	WRM
0	ISSUED FOR REVISION GRANT OF LOCATION	IBWF	05/20/21	WRM
N.D.	DESCRIPTION	BY	DATE	APP'R

REVISION



MANHOLE DETAILS

LINE 211--514Y WOBURN STATION 211 TO MYSTIC STATION 250

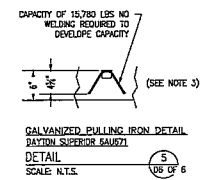
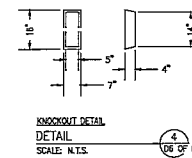
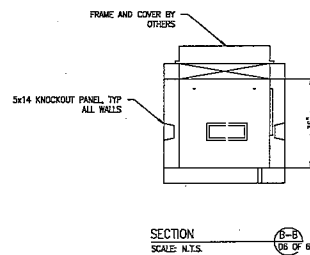
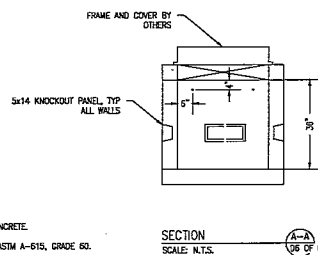
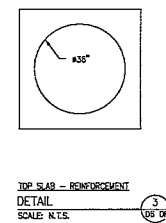
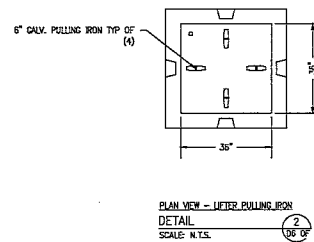
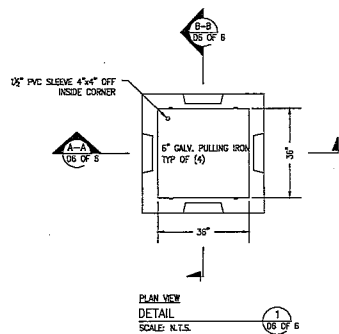
115K+V UNDERGROUND TRANSMISSION LINE

WOBURN CHARLESTOWN, MASSACHUSETTS

SCALE:	DATE	DRAWN	CHK'D	APP'R	DRAWING NO.	REV
N.T.S.	5/09/17	STE	MM		D5 OF 5	2

THREE BUSINESS DAYS BEFORE YOU DIG CALL
MASSACHUSETTS 811
TOLL FREE
811 or 1-888-344-7233





- NOTES:**
1. 4000 PSI AIR ENTRAINED CONCRETE.
 2. REINFORCEMENT STEEL PER ASTM A-615, GRADE 60.
 3. PULLING IRONS ALSO USED FOR PRECAST INSTALLATION.
 4. WEIGHT OF UNIT = 4,300 LBS.

THREE BUSINESS DAYS BEFORE YOU DIG CALL
MASSACHUSETTS 811
TOLL FREE
811 or 1-888-344-7233



REVISION			
2	ISSUED FOR REVISED GRANT OF LOCATION	LAS	03/18/22
1	ISSUED FOR REVISED GRANT OF LOCATION	BWF	02/09/22
0	ISSUED FOR REVISED GRANT OF LOCATION	BWF	05/20/21
DESCRIPTION			
EVSOURCE ENERGY			
COMMUNICATION VAULT DETAILS			
LINE 211-514Y WOBURN STATION 211 TO MYSTIC STATION 250			
115KV UNDERGROUND TRANSMISSION LINE			
WOBURN CHARLESTOWN, MASSACHUSETTS			
SCALE	DATE	DRAWN	CHK D.
N.T.S.	5/09/17	STE	MM
APPR.		DRAWING NO.	REV.
		D6 OF 6	2

Location:
46/ A/ 2/ /
710 MYSTIC AVE
Owner:
NAF REALTY LLC
710 MYSTIC AVE
SOMERVILLE, MA 02145

Location:
69/ C/ 1/ /
408 MYSTIC AVE
Owner:
DOHERTY JONH J JR &
ROGERS WILLIAM & RICCARDI PAT
TRUSTEES
PO BOX 45189
SOMERVILLE, MA 02145

Location:
88/ A/ 1/ /
5 MIDDLESEX AVE
Owner:
BRE-BMR MIDDLESEX LLC
17190 BERNARDO CENTER DRIVE
SAN DIEGO, CA 92128

Location:
101/ A/ 9/ /
45 MYSTIC AVE
Owner:
TRUST ILLUSION REALTY
BOUDREAU ROBERT W II
45 MYSTIC AVE
SOMERVILLE, MA 02145

Location:
101/ B/ 14/ /
33 MYSTIC AVE
Owner:
STELLA MOON LLC
15 PAUL GORE STREET
JAMAICA PLAIN, MA 02130

Location:
46/ C/ 7/ /
3 EAST ALBION ST
Owner:
RESOURCES FOR HUMAN
DEVELOPMENT INC
4700 WISSAHICKON AVE
PHILADELPHIA, PA 19144

Location:
46/ C/ 15/ 48B/
48 ASH AVE
Owner:
PINGIARO LINDA S
48B ASH AVE
SOMERVILLE, MA 02145

Location:
46/ C/ 23/ /
111 MORELAND ST
Owner:
RYKERSON SKYE TRUSTEE & ET AL
SKYE RYKERSON LIVING TRUST
359 ARLINGTON STREEY
WATERTOWN, MA 02472

Location:
69/ C/ 16/ /
19 TAYLOR ST
Owner:
KILLEEN ELEANOR
19 TAYLOR ST
SOMERVILLE, MA 02145

Location:
46/ B/ 1/ /
706 MYSTIC AVE
Owner:
ANALETTO THOMAS ANTONIO TRUSTEE
THOMAS A ANALETTO IRREVOC TRUST
2500 MYSTIC VALLEY PKWY #305
MEDFORD, MA 02155

Location:
69/ C/ 5/ /
400 MYSTIC AVE
Owner:
CHARMED LIFE LLC
202 WEST BROADWAY
SOUTH BOSTON, MA 02127

Location:
88/ A/ 4/ /
75 MYSTIC AVE
Owner:
I-93 SOMERVILLE LLC
PROPERTY TAX DEPT #2667
PO BOX 105842
ATLANTA, GA 30348

Location:
101/ A/ 10/ /
53 MYSTIC AVE
Owner:
MMCDM 53-55 MYSTIC LLC
7 DRIFTWOOD LN
LYNNFIELD, MA 01940

Location:
101/ B/ 22/ /
20 ASSEMBLY SQ DR
Owner:
ECO LLC
20 ASSEMBLY SQ DR
SOMERVILLE, MA 02145

Location:
46/ C/ 7/A/
49 ASH AVE
Owner:
MELENDEZ WILLIAM & NORMA
49 ASH AVE
SOMERVILLE, MA 02145

Location:
46/ C/ 15/ 50A/
50 ASH AVE
Owner:
MANDERS NOAH
50 ASH AVE
SOMERVILLE, MA 02143

Location:
46/ C/ 24/ /
113 MORELAND ST
Owner:
AHEARN JOHN J & MARCIA
113 MORELAND ST
SOMERVILLE, MA 02145

Location:
57/ A/ 1/ /
500 MYSTIC AVE
Owner:
SOMERVILLE HOUSING AUTH
30 MEMORIAL RD
SOMERVILLE, MA 02145

Location:
69/ B/ 2/ /
422 MYSTIC AVE
Owner:
THE 422 MYSTIC AVE REALTY LLC
59 UNION SQ
SOMERVILLE, MA 02143

Location:
69/ D/ 1/ /
362 MYSTIC AVE
Owner:
YANG TZE LLC
P.O. BOX 230196
BOSTON, MA 02127

Location:
101/ A/ 8/ /
37 MYSTIC AVE
Owner:
DAVIDIAN JAMES C & LAURA H TRS
37 MYSTIC AVENUE REALTY TRUST
10 SECOND AVE
BURLINGTON, MA 01803

Location:
101/ B/ 13/ /
29 MYSTIC AVE
Owner:
MMCDM 29 MYSTIC LLC
7 DRIFTWOOD LN
LYNNFIELD, MA 01940

Location:
46/ B/ 11/ /
0 FREMONT ST
Owner:
HALEY CAROL A & KENNETH J
105 FREMONT ST
SOMERVILLE, MA 02145

Location:
46/ C/ 15/ 48A/
48 ASH AVE
Owner:
BHAKTA JIGNESH D & SHERTUKDE
AMOLA H
26 DORR STREET
ROXBURY, MA 02119-3500

Location:
46/ C/ 15/ 50B/
50 ASH AVE
Owner:
DEMICHELE JAMES P
30 CEDAR CREEK RD
SUDBURY, MA 01776

Location:
69/ B/ 14/ /
123 TEMPLE ST
Owner:
PRIVITERA FRANCIS D TRUSTEE
123 TEMPLE STREET REALTY TRUST
59 UNION SQ
SOMERVILLE, MA 02143

Location:
77/ A/ 1/ /
BROADWAY
Owner:
COMM OF MASS
C/O DIVISION OF CAPITAL ASSET
MANAGEMENT
ONE ASHBURTON PL 15TH FL
BOSTON, MA 02108

Location:
69/ E/ 2/ /
350 MYSTIC AVE
Owner:
CENTURY BANK & TRUST COMPANY
400 MYSTIC AVE
MEDFORD, MA 02155

Location:
101/ B/ 10/ /
13 MYSTIC AVE
Owner:
CITY OF SOMERVILLE
ASSEMBLY SQ DRIVE
93 HIGHLAND AVE
SOMERVILLE, MA 02143

Location:
46/ C/ 13/ 2/
53 ASH AVE #2
Owner:
DOYLE ASHLEY N
53 ASH AVE 2
SOMERVILLE, MA 02145

Location:
69/ A/ 1/ 460C/
460C MYSTIC AVE
Owner:
ST POLYCARP REDEVELOPMENT LLC
C/O WINGATE MANAGEMENT
7 MEMORIAL RD #109
SOMERVILLE, MA 02145

Location:
57/ A/ 2/ 3/
5 MEMORIAL RD #3
Owner:
SAINT POLYCARP APARTMENTS 3 LLC
C/O WINGATE MANAGEMENT
7 MEMORIAL RD #109
SOMERVILLE, MA 02145

Location:
69/ E/ 1/ 103/
100 FELLSSWAY WEST #103
Owner:
CRAIG CORPORATION
100 FELLSSWAY WEST 1ST FLR
SOMERVILLE, MA 02145

Location:
69/ E/ 1/ 202/
100 FELLSSWAY WEST #202
Owner:
CRAIG CORPORATION
100 FELLSSWAY WEST 1ST FLR
SOMERVILLE, MA 02145

Location:
69/ E/ 1/ 205/
100 FELLSSWAY WEST #205
Owner:
CRAIG CORPORATION
100 FELLSSWAY WEST 1ST FLR
SOMERVILLE, MA 02145

Location:
69/ E/ 1/ 301/
100 FELLSSWAY WEST #301
Owner:
CRAIG CORPORATION
100 FELLSSWAY WEST 1ST FLR
SOMERVILLE, MA 02145

Location:
69/ E/ 1/ 304/
100 FELLSSWAY WEST #304
Owner:
CRAIG CORPORATION
100 FELLSSWAY WEST 1ST FLR
SOMERVILLE, MA 02145

Location:
98/ A/ 4/ /
0 MYSTIC AVE
Owner:
MBTA
C/O MARK DOYLE R E DIRECTOR
10 PARK PLAZA SUITE 5720
BOSTON, MA 02116

Location:
101/ B/ 11/ /
15 MYSTIC AVE
Owner:
CITY OF SOMERVILLE
ASSEMBLY SQ DRIVE/MYSTIC AVE
93 HIGHLAND AVE
SOMERVILLE, MA 02143

Location:
69/ A/ 1/ 100/
100 TEMPLE ST
Owner:
MISSIONARY CHURCH OF THE HAITIAN
COMM IN
100 TEMPLE ST
SOMERVILLE, MA 02145

Location:
69/ A/ 1/ 460A/
460A MYSTIC AVE
Owner:
ST POLYCARP REDEVELOPMENT LLC
C/O LUCIA HOAG-WINN RESIDENTIAL
7 MEMORIAL RD #109
SOMERVILLE, MA 02145

Location:
69/ E/ 1/ 101/
100 FELLSSWAY WEST #101
Owner:
CRAIG CORPORATION
100 FELLSSWAY WEST 1ST FLR
SOMERVILLE, MA 02145

Location:
69/ E/ 1/ 104/
100 FELLSSWAY WEST #104
Owner:
CRAIG CORPORATION
100 FELLSSWAY WEST 1ST FLR
SOMERVILLE, MA 02145

Location:
69/ E/ 1/ 203/
100 FELLSSWAY WEST #203
Owner:
CRAIG CORPORATION
100 FELLSSWAY WEST 1ST FLR
SOMERVILLE, MA 02145

Location:
69/ E/ 1/ 206/
100 FELLSSWAY WEST #206
Owner:
CRAIG CORPORATION
100 FELLSSWAY WEST 1ST FLR
SOMERVILLE, MA 02145

Location:
69/ E/ 1/ 302/
100 FELLSSWAY WEST #302
Owner:
CRAIG CORPORATION
100 FELLSSWAY WEST 1ST FLR
SOMERVILLE, MA 02145

Location:
69/ E/ 1/ 305/
100 FELLSSWAY WEST #305
Owner:
CRAIG CORPORATION
100 FELLSSWAY WEST 1ST FLR
SOMERVILLE, MA 02145

Location:
101/ B/ 9/ /
11 MYSTIC AVE
Owner:
CITY OF SOMERVILLE
BILLBOARDS
93 HIGHLAND AVE
SOMERVILLE, MA 02143

Location:
46/ C/ 13/ 1/
53 ASH AVE #1
Owner:
TATEOSIAN NICOLE A
S/O ZHOU JUNHAN & ZHANG LILI
53 ASH AVE #1
SOMERVILLE, MA 02145

Location:
69/ A/ 1/ 114/
114 TEMPLE ST
Owner:
FOR OUR COMMUNITIES -FOCUS INC
27 MICA LANE
C/O MALONEY PROPERTIES INC
WELLESLEY, MA 02481

Location:
57/ A/ 2/ 2/
480 MYSTIC AVE #2
Owner:
SAINT POLYCARP APARTMENTS 2
LLC
C/O WINGATE MANAGEMENT
7 MEMORIAL RD #109
SOMERVILLE, MA 02145

Location:
69/ E/ 1/ 102/
100 FELLSSWAY WEST #102
Owner:
CRAIG CORPORATION
100 FELLSSWAY WEST 1ST FLR
SOMERVILLE, MA 02145

Location:
69/ E/ 1/ 201/
100 FELLSSWAY WEST #201
Owner:
CRAIG CORPORATION
100 FELLSSWAY WEST 1ST FLR
SOMERVILLE, MA 02145

Location:
69/ E/ 1/ 204/
100 FELLSSWAY WEST #204
Owner:
CRAIG CORPORATION
100 FELLSSWAY WEST 1ST FLR
SOMERVILLE, MA 02145

Location:
69/ E/ 1/ 207/
100 FELLSSWAY WEST #207
Owner:
CRAIG CORPORATION
100 FELLSSWAY WEST 1ST FLR
SOMERVILLE, MA 02145

Location:
69/ E/ 1/ 303/
100 FELLSSWAY WEST #303
Owner:
CRAIG CORPORATION
100 FELLSSWAY WEST 1ST FLR
SOMERVILLE, MA 02145

Location:
69/ E/ 1/ 306/
100 FELLSSWAY WEST #306
Owner:
CRAIG CORPORATION
100 FELLSSWAY WEST 1ST FLR
SOMERVILLE, MA 02145

Location:
69/ E/ 1/ 401/
100 FELLSSWAY WEST #401
Owner:
CRAIG CORPORATION
100 FELLSSWAY WEST
SOMERVILLE, MA 02145

Location:
69/ E/ 1/ 404/
100 FELLSSWAY WEST #404
Owner:
CRAIG CORPORATION
100 FELLSSWAY WEST 1ST FLR
SOMERVILLE, MA 02145

Location:
46/ B/ 2/ 1/
114 MORELAND ST #1
Owner:
ROTONDI TODD M TRUSTEE
114 MORELAND STREET REALTY TRUST
114 MORELAND ST 1
SOMERVILLE, MA 02145

Location:
46/ C/ 1/ 656/
656 MYSTIC AVE
Owner:
656 MYSTIC AVE
S/O J FULLER CONSTRUCTION
673 CENTRAL AVE
NEEDHAM, MA 02492

Location:
69/ E/ 1/ 402/
100 FELLSSWAY WEST #402
Owner:
CRAIG CORPORATION
100 FELLSSWAY WEST 1ST FLR
SOMERVILLE, MA 02145

Location:
69/ E/ 1/ 405/
100 FELLSSWAY WEST #405
Owner:
CRAIG CORPORATION
100 FELLSSWAY WEST 1ST FLR
SOMERVILLE, MA 02145

Location:
46/ B/ 2/ 2/
114 MORELAND ST #2
Owner:
ROTONDI TODD M TRUSTEE
114 MORELAND STREET REALTY TRUST
114 MORELAND ST 2
SOMERVILLE, MA 02145

Location:
46/ C/ 1/ 658/
658 MYSTIC AVE
Owner:
658 MYSTIC LLC
S/O J FULLER CONSTRUCTION
673 CENTRAL AVE
NEEDHAM, MA 02492

Location:
69/ E/ 1/ 403/
100 FELLSSWAY WEST #403
Owner:
CRAIG CORPORATION
100 FELLSSWAY WEST 1ST FLR
SOMERVILLE, MA 02145

Location:
69/ E/ 1/ 406/
100 FELLSSWAY WEST #406
Owner:
CRAIG CORPORATION
100 FELLSSWAY WEST 1ST FLR
SOMERVILLE, MA 02145

Location:
46/ C/ 1/ 654/
654 MYSTIC AVE
Owner:
654 MYSTIC
S/O J FULLER CONSTRUCTION
673 CENTRAL AVE
NEEDHAM, MA 02127