



CITY OF SOMERVILLE
Commonwealth of Massachusetts
93 Highland Avenue
Somerville, MA 02143
(617) 625-6600

BUSINESS LICENSE APPLICATION - Grant of Location

File #: 21-017189

License #: BL21-000158

Address: 101 Linwood St

Licensee: Dave Flewelling Comcast of Massachusetts/ New Hampshire, LLC

DBA Name: Comcast Cable Communications Management, LLC

Business Ownership Type: LLC

Legal Name of Entity: Comcast Cable Communications Management, LLC

Owners/Officers: Brian Roberts, Brian Roberts, Brian Roberts, Brian Roberts

License Information:

Grant of location issued to: Comcast Cable Communications Management, LLC

Describe the reason for the work, and the intended beneficiaries: Providing Comcast Service to Eversource.

Insert here the same detailed description of the work as appears in the attached Grant of Location Order: Poplar Street: Starting at the existing Comcast Manhole excavating to place (2) 4" PVC Conduits 260'+/_ to a proposed 24"x 36" vault on Joy Street. From the newly place vault placing (1) 4" PVC Conduit 20'+/_ to a proposed 3' x3' manhole. Continuing from the manhole with (1)4" PVC Conduit 15'+/_ to the Eversource Manhole.

Approval Conditions:

Approved By:

Karla Cuarezma, Approved

Malik Drayton, Approved with Conditions

APPROVAL CONDITION: MD20211130: Contractor shall take all necessary precautions to avoid damaging any tree or tree part with equipment.

APPROVAL CONDITION: MD20211130: All nearby street tree(s) shall be protected prior to and during all construction activities using TREE BOX or TREE WRAPS. . TREE BOX shall be constructed from 2 in. x 4 in. lumber creating a box around the border of the tree pit with 2 in. x 4 in. lumber standing straight up at the corners and wrapped with orange snow fence. Detail attached. . TREE WRAPS (TREE TRUNK WRAPPING PROTECTION LUMBER) shall consist of 2 in. x 4 in. and 8 ft. height lumber wired together in close spacing with zip ties or 16 gauge galvanized steel wire to form

a protective enclosure around tree trunks. Use burlap to separate the wood from the bark if necessary to prevent wood from scraping or bruising bark. Do not use staples or puncture the trunk in any way. APPROVAL CONDITION: MD20211130: Any tree roots less than two (2) inches in diameter that cannot be avoided during construction shall be carefully and cleanly cut with a clean pair of pruning shears or loppers. Roots are to be cut back flush with the edge of the trench. If any tree roots greater than two (2) inches in diameter are encountered, stop work immediately and contact the City Urban Forester. Any and all pruning of roots greater than 2 inches in diameter must be completed under the supervision of the City Urban Forester.

Eric Weisman, Approved

Kimberly M. Wells, Approved



CITY OF SOMERVILLE, MASSACHUSETTS
CITY CLERK'S OFFICE
JOSEPH A. CURTATONE
MAYOR

KIMBERLY M. WELLS
City Clerk

November 30, 2021

NOTICE OF PUBLIC HEARING

You are hereby notified that the Somerville City Council will hold a Public Hearing on the following Petition. You are receiving this Notice because the Petitioner has reported that you own property that abuts the work that is being proposed. You and other members of the public are invited to attend and be heard at this Hearing.

Because of Governor Baker's and Mayor Curtatone's recent orders limiting the number of people that may gather in one place, **this meeting of the City Council will be conducted via remote participation, online in a webinar hosted on the GoToWebinar platform.**

You have two ways to be heard at this meeting:

1. To attend and be heard, enter the link exactly as it appears below into your internet browser anytime before the meeting. You will then be asked to register for the meeting. After registering, you will receive an email with instructions to join the webinar when it starts.
2. If you are unable to attend but wish to be heard, you may send written comments by US mail to the City Clerk at the address below, or by email to cityclerk@somervillema.gov. Your comments must arrive no later than 12 Noon on the day of the Hearing, in order to be sure they are conveyed to the Council.

PETITION: Comcast seeks a Grant of Location to install a total of 295 feet of conduit in Poplar Street and Joy Street as follows: Starting from existing Comcast manhole to a proposed Comcast vault on Joy Street. Then, continuing to a proposed manhole to a final pickup at an existing manhole 22832.

PLACE: <https://attendee.gotowebinar.com/register/2160417622682739213>

v

TIME: Thursday, December 9, 2021, at 7:00 PM.

PURPOSE: The work is necessary to provide service to Eversource.



PROPOSED CONDUIT INSTALLATION
AT
101 LINWOOD ST
SOMERVILLE, MA



LOCUS
N.T.S

INDEX OF DRAWING

SHEET NO.	DESCRIPTION
-	COVER SHEET
01	PROPOSED CONDUIT INSTALLATION

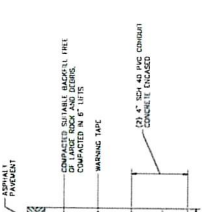
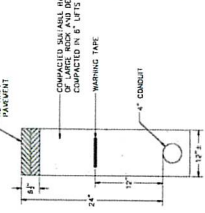
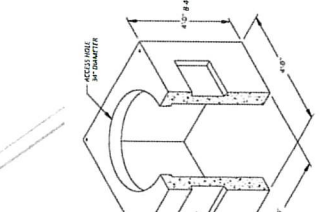
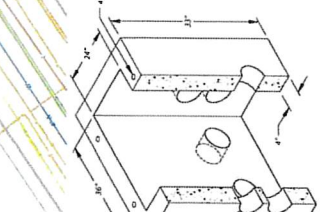
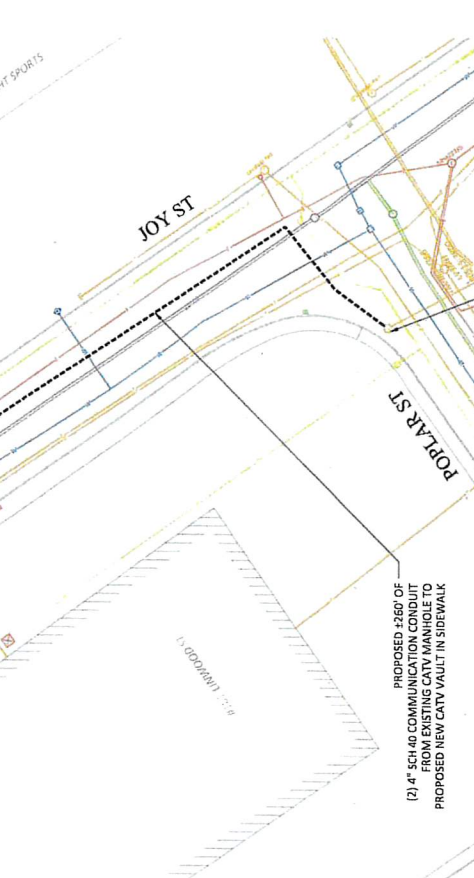
AXIS
ENGINEERING GROUP
201 Boston Post Rd Suite 100
Marlborough, MA 01752
(774) 556-2924 www.axisgroup.com

GENERAL NOTES

- THE LOCATIONS OF EXISTING UNDERGROUND UTILITIES ARE SHOWN IN AN APPROXIMATE WAY ONLY AND HAVE NOT BEEN VERIFIED BY THE CONTRACTOR. THE CONTRACTOR SHALL DETERMINE THE EXACT LOCATION OF ALL EXISTING UTILITIES BEFORE ANY EXCAVATION IS PERMITTED. THE CONTRACTOR SHALL BE RESPONSIBLE FOR ANY AND ALL DAMAGES WHICH MIGHT BE OCCASIONED BY THE CONTRACTOR'S FAILURE TO EXACTLY LOCATE AND PRESERVE ANY AND ALL UNDERGROUND UTILITIES.
- WHERE AN EXISTING UTILITY IS FOUND TO CONFLICT WITH THE PROPOSED WORK, THE LOCATION, ELEVATION AND DEPTH OF SUCH UTILITY SHALL BE ACCURATELY DETERMINED WITHOUT DELAY BY THE CONTRACTOR, AND THE INFORMATION FURNISHED TO THE ENGINEER FOR RESOLUTION OF THE CONFLICT.
- THE CONTRACTOR SHOULD MAINTAIN A SEPARATION OF 18 INCHES MIN. WHEN CROSSING EXISTING WATER FACILITIES.
- THE CONTRACTOR SHALL MAKE ALL ARRANGEMENTS FOR THE ALTERATION AND ADJUSTMENT OF GAS, ELECTRIC, TELEPHONE AND ANY OTHER PRIVATE UTILITIES BY THE UTILITY COMPANY.
- THE CONTRACTOR SHALL NOT DISTURB PUBLIC TREES AND SHRUBS.
- AREAS OUTSIDE THE LIMITS OF PROPOSED WORK DISTURBED BY THE CONTRACTOR'S OPERATIONS SHALL BE RESTORED BY THE CONTRACTOR TO THEIR ORIGINAL CONDITION AT NO EXPENSE TO THE OWNER.
- THE CONTRACTOR SHALL BE RESPONSIBLE FOR PLACING AND MAINTAINING TEMPORARY RESURFACING AND/OR PLATING FOR ALL EXCAVATIONS IN PAVED STREETS AND SIDEWALKS UNTIL PERMANENT RESURFACING IS COMPLETE.
- JOINTS BETWEEN NEW BITUMINOUS CONCRETE ROADWAY PAVEMENT AND SAW CUT EXISTING PAVEMENT SHALL BE SEALED WITH BITUMEN AND BACK SANDED.
- THE CONTRACTOR SHALL PROTECT AND SUPPORT ALL EXISTING UTILITY LINES THAT BECOME EXPOSED DUE TO EXCAVATION REQUIRED TO INSTALL THE PROPOSED CONDUIT.
- THE CONTRACTOR SHALL REPLACE ALL DISTURBED TRAFFIC SIGNAL LOOP DETECTORS TO GOOD WORKING CONDITION AS REQUIRED BY THE LATEST STANDARDS OF THE MUNICIPAL TRAFFIC DEPARTMENT.
- ALL EXISTING STATE, COUNTY, CITY, AND TOWN LOCATION LINES AND PRIVATE PROPERTY LINES HAVE BEEN ESTABLISHED FROM AVAILABLE INFORMATION AND THEIR EXACT LOCATION ARE NOT GUARANTEED.
- THE CONTRACTOR SHALL REPLACE ALL PAVEMENT MARKINGS IN THEIR ENTIRETY THAT HAVE BEEN DAMAGED BY TRENCH EXCAVATION OR OPERATIONS OF THE CONTRACTOR WITH SIMILAR COLOR AND SIZE THERMOPLASTIC MARKINGS.

- * - ITEM SHOWN ON UTILITY RECORDS, BUT NOT FOUND IN FIELD.
- * - ITEM FOUND IN FIELD, BUT NOT IN UTILITY RECORDS.

EXISTING ELECTRIC MANHOLE #22892
 PROPOSED ±15' OF (3) 4" SCH 40 COMMUNICATION CONDUIT FROM EXISTING 3'x3'x3' BUFFER MANHOLE TO EXISTING ELECTRIC MANHOLE #22892
 PROPOSED NEW 24"x36" CATV VAULT IN SIDEWALK FOR FUTURE USE
 PROPOSED ±30' OF (1) 4" SCH 40 COMMUNICATION CONDUIT FROM EXISTING 3'x3'x3' BUFFER MANHOLE TO PROPOSED NEW 24"x36" CATV VAULT IN SIDEWALK FOR FUTURE USE
 PROPOSED NEW 3'x3'x3' BUFFER MANHOLE



- TRENCH DETAIL NOTES:**
- 24" MAXIMUM FROM TOP OF CONDUIT TO SURFACE.
 - 12" FROM TOP OF CONDUIT TO METALLIC MARKING TAPE PLACED ABOVE WITH SAME MATERIALS AS EXISTING.
 - REPAIR SIDEWALKS AND SIDEWALKS WITH SAME MATERIALS AS EXISTING.
 - AND APPROPRIATELY FLAGGED UPON INSTALLATION.

LEGEND

1	ELECTRIC	UTILITY LINE
2	TELEPHONE	UTILITY LINE
3	JOINT UTILITY	UTILITY LINE
4	LAMP POST	UTILITY LINE
5	TRAP LIGHT	UTILITY LINE
6	CONDUIT	UTILITY LINE
7	MANHOLE	UTILITY LINE
8	MANHOLE	UTILITY LINE
9	MANHOLE	UTILITY LINE
10	MANHOLE	UTILITY LINE
11	MANHOLE	UTILITY LINE
12	MANHOLE	UTILITY LINE
13	MANHOLE	UTILITY LINE
14	MANHOLE	UTILITY LINE
15	MANHOLE	UTILITY LINE
16	MANHOLE	UTILITY LINE
17	MANHOLE	UTILITY LINE
18	MANHOLE	UTILITY LINE
19	MANHOLE	UTILITY LINE
20	MANHOLE	UTILITY LINE
21	MANHOLE	UTILITY LINE
22	MANHOLE	UTILITY LINE
23	MANHOLE	UTILITY LINE
24	MANHOLE	UTILITY LINE
25	MANHOLE	UTILITY LINE
26	MANHOLE	UTILITY LINE
27	MANHOLE	UTILITY LINE
28	MANHOLE	UTILITY LINE
29	MANHOLE	UTILITY LINE
30	MANHOLE	UTILITY LINE
31	MANHOLE	UTILITY LINE
32	MANHOLE	UTILITY LINE
33	MANHOLE	UTILITY LINE
34	MANHOLE	UTILITY LINE
35	MANHOLE	UTILITY LINE
36	MANHOLE	UTILITY LINE
37	MANHOLE	UTILITY LINE
38	MANHOLE	UTILITY LINE
39	MANHOLE	UTILITY LINE
40	MANHOLE	UTILITY LINE
41	MANHOLE	UTILITY LINE
42	MANHOLE	UTILITY LINE
43	MANHOLE	UTILITY LINE
44	MANHOLE	UTILITY LINE
45	MANHOLE	UTILITY LINE
46	MANHOLE	UTILITY LINE
47	MANHOLE	UTILITY LINE
48	MANHOLE	UTILITY LINE
49	MANHOLE	UTILITY LINE
50	MANHOLE	UTILITY LINE

PROPOSED CONDUIT INSTALLATION

DATE: 1/17/2021

SCALE: 1" = 40'

AS SHOWN

AXIS ENGINEERING GROUP

comcast

CALL BEFORE YOU DIG
 UNDERGROUND SERVICE ALERT
 1-800-4-A-DIG
 1-877-868-6841

DO NOT EXCAVATE
 EXISTING UTILITIES SHOWN ON THIS APPROXIMATE AND NOT WARRANTED TO BE CORRECT. THE CONTRACTOR SHALL VERIFY THE LOCATION OF ALL PUBLIC AND PRIVATE UTILITIES PRIOR TO BEGINNING ANY EXCAVATION.

PROJECT NO. 1501

DATE: 1/17/2021

SCALE: 1" = 40'

AS SHOWN



TRAFFIC MANAGEMENT PLAN
AT
101 LINWOOD ST
SOMERVILLE, MA



LOCUS
N.T.S

INDEX OF DRAWING	
SHEET NO.	DESCRIPTION
-	COVER SHEET
01	TRAFFIC CONTROL 01
02	TRAFFIC CONTROL 02
03	TRAFFIC CONTROL 03

AXIS
ENGINEERING GROUP
201 Boston Post Rd Suite 100
Marlborough, MA 01752
(774) 558-2824 www.axisgroup.com

TRAFFIC CONTROL LEGEND

TRAFFIC CONE	WORK AREA
POLICE SIGNAL	UTILITY WORK SIGN

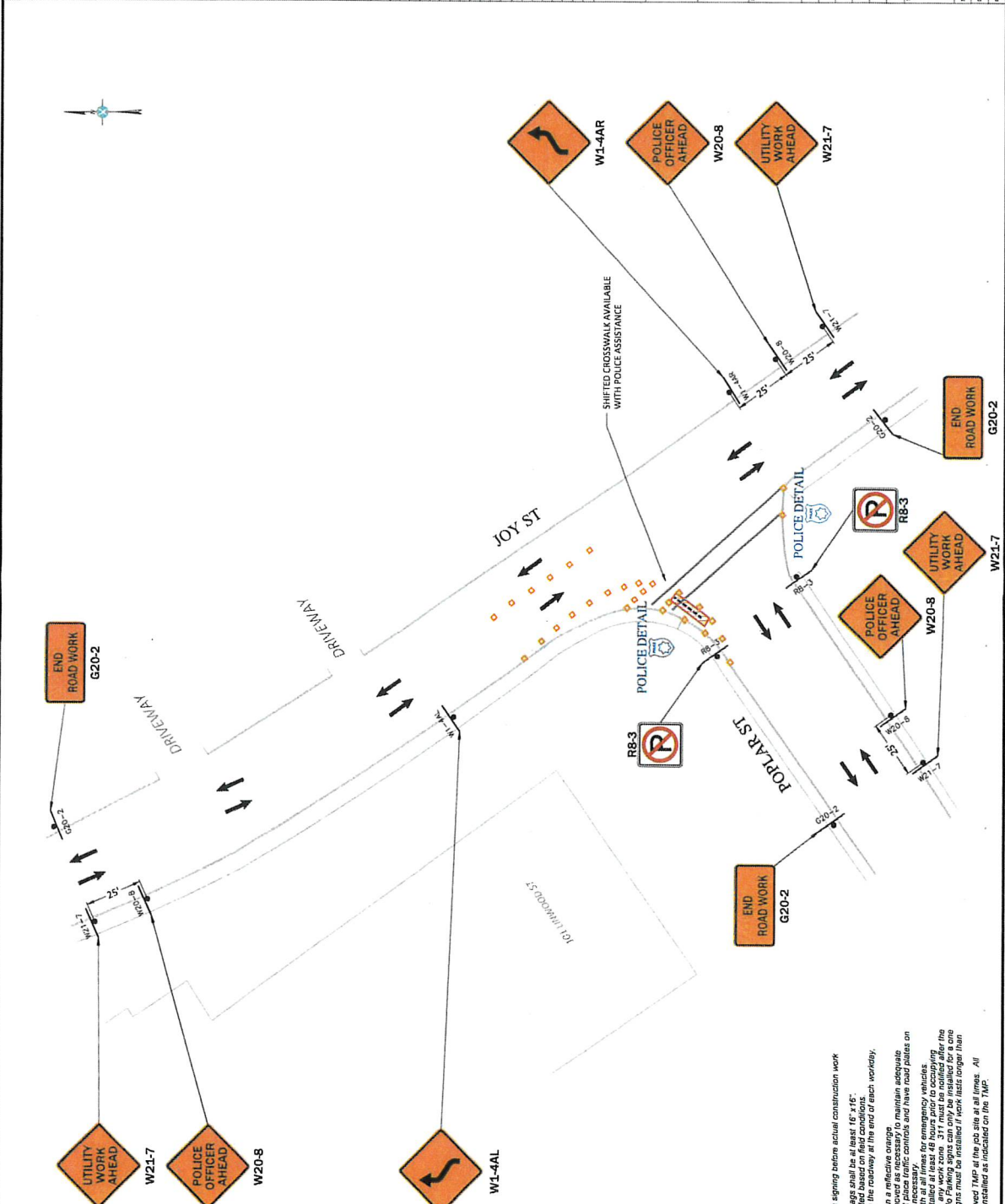
1" = 8 FEET

SYMBOL	DESCRIPTION
1	TRAFFIC CONE
2	WORK AREA
3	POLICE SIGNAL
4	UTILITY WORK SIGN
5	TRAFFIC LIGHT
6	LAMP POST
7	UTILITY POLE
8	TRAFFIC LIGHT
9	TRAFFIC LIGHT
10	TRAFFIC LIGHT
11	TRAFFIC LIGHT
12	TRAFFIC LIGHT
13	TRAFFIC LIGHT
14	TRAFFIC LIGHT
15	TRAFFIC LIGHT
16	TRAFFIC LIGHT
17	TRAFFIC LIGHT
18	TRAFFIC LIGHT
19	TRAFFIC LIGHT
20	TRAFFIC LIGHT
21	TRAFFIC LIGHT
22	TRAFFIC LIGHT
23	TRAFFIC LIGHT
24	TRAFFIC LIGHT
25	TRAFFIC LIGHT
26	TRAFFIC LIGHT
27	TRAFFIC LIGHT
28	TRAFFIC LIGHT
29	TRAFFIC LIGHT
30	TRAFFIC LIGHT
31	TRAFFIC LIGHT
32	TRAFFIC LIGHT
33	TRAFFIC LIGHT
34	TRAFFIC LIGHT
35	TRAFFIC LIGHT
36	TRAFFIC LIGHT
37	TRAFFIC LIGHT
38	TRAFFIC LIGHT
39	TRAFFIC LIGHT
40	TRAFFIC LIGHT
41	TRAFFIC LIGHT
42	TRAFFIC LIGHT
43	TRAFFIC LIGHT
44	TRAFFIC LIGHT
45	TRAFFIC LIGHT
46	TRAFFIC LIGHT
47	TRAFFIC LIGHT
48	TRAFFIC LIGHT
49	TRAFFIC LIGHT
50	TRAFFIC LIGHT
51	TRAFFIC LIGHT
52	TRAFFIC LIGHT
53	TRAFFIC LIGHT
54	TRAFFIC LIGHT
55	TRAFFIC LIGHT
56	TRAFFIC LIGHT
57	TRAFFIC LIGHT
58	TRAFFIC LIGHT
59	TRAFFIC LIGHT
60	TRAFFIC LIGHT
61	TRAFFIC LIGHT
62	TRAFFIC LIGHT
63	TRAFFIC LIGHT
64	TRAFFIC LIGHT
65	TRAFFIC LIGHT
66	TRAFFIC LIGHT
67	TRAFFIC LIGHT
68	TRAFFIC LIGHT
69	TRAFFIC LIGHT
70	TRAFFIC LIGHT
71	TRAFFIC LIGHT
72	TRAFFIC LIGHT
73	TRAFFIC LIGHT
74	TRAFFIC LIGHT
75	TRAFFIC LIGHT
76	TRAFFIC LIGHT
77	TRAFFIC LIGHT
78	TRAFFIC LIGHT
79	TRAFFIC LIGHT
80	TRAFFIC LIGHT
81	TRAFFIC LIGHT
82	TRAFFIC LIGHT
83	TRAFFIC LIGHT
84	TRAFFIC LIGHT
85	TRAFFIC LIGHT
86	TRAFFIC LIGHT
87	TRAFFIC LIGHT
88	TRAFFIC LIGHT
89	TRAFFIC LIGHT
90	TRAFFIC LIGHT
91	TRAFFIC LIGHT
92	TRAFFIC LIGHT
93	TRAFFIC LIGHT
94	TRAFFIC LIGHT
95	TRAFFIC LIGHT
96	TRAFFIC LIGHT
97	TRAFFIC LIGHT
98	TRAFFIC LIGHT
99	TRAFFIC LIGHT
100	TRAFFIC LIGHT

CALL BEFORE YOU DIG
 1-800-4-A- Dig
 1-800-4-A- Dig
 1-800-4-A- Dig

AXIS ENGINEERING GROUP
 Comcast

TRAFFIC CONTROL D1
 DATE: 1/17/2021
 DRAWN BY: JAS/10/10/2021
 CHECKED BY: JAS/10/10/2021
 DATE: 1/17/2021



- Traffic Management Notes:**
1. Place all safety devices and construction signing before actual construction work.
 2. Use flags on advanced warning signs. Flags shall be at least 16" x 16".
 3. Distances are a guide and may be adjusted based on field conditions.
 4. All warning signs shall be back legend on the roadway at the end of each warning.
 5. All warning signs shall be back legend on the roadway at the end of each warning.
 6. All warning signs shall be back legend on the roadway at the end of each warning.
 7. Temporary No Parking signs must be installed at least 48 hours prior to occupying the work zone. 311 must be notified after the work zone is established. Temporary No Parking signs must be installed 1 week longer than the work zone.
 8. One week in any work zone.
 9. All signs and traffic control devices must be installed as indicated on the TMP.

