



**CITY OF SOMERVILLE**  
Commonwealth of Massachusetts  
93 Highland Avenue  
Somerville, MA 02143  
(617) 625-6600

## BUSINESS LICENSE APPLICATION - Grant of Location

File #: 23-022452

License #: BL23-000123

Address: 1 WASHINGTON ST

Licensee: Kelly-Ann Correia Eversource Energy dba NSTAR Electric Company

DBA Name: NSTAR ELECTRIC COMPANY d/b/a EVERSOURCE ENERGY

Business Ownership Type: Corporation

Legal Name of Entity: NSTAR ELECTRIC COMPANY d/b/a EVERSOURCE ENERGY

Owners/Officers: Joseph Nolan Jr, , ,

### License Information:

**Grant of location issued to:** NSTAR ELECTRIC COMPANY d/b/a EVERSOURCE ENERGY

**Describe the reason for the work, and the intended beneficiaries:** This Work is necessary in order to increase load capacity which will support the growth of electrification in the area.

**Insert here the same detailed description of the work as appears in the attached Grant of Location**

**Order:** Route 1 Starting from existing MH21996 on McGrath Highway near Alston Street, through McGrath Highway, Washington Street, and Joy Street, and ending at a point of pickup at new MH31858 on Washington Street near Knowlton Street, install approximately 1,778 feet of conduit and three new manholes. Route 2 Starting from existing MH14534 on Washington Street near McGrath Highway through Washington Street ending at a point of pickup at new MH31858, install approximately 517 feet of conduit. Route 3 Starting from new MH31858 on Washington Street near Knowlton Street through Washington Street ending at a point of pickup at existing MH15152 near 1 Washington Street, install approximately 1,803 feet of conduit.

### Approved By:

**Mads Filtenborg, Approved with Conditions**

APPROVAL CONDITION IMM 240105: When applying to Street Opening Permit, applicant must submit approved MassDOT Access Permit prior to beginning work on McGrath Highway.

APPROVAL CONDITION IMM 240105: Any work requiring the use of the street and/or sidewalk will require a Street/Sidewalk Occupancy Permit from the Engineering Department. Apply via Citizen Serve before conduit installation.

APPROVAL CONDITION IMM 240105: 6" cold patch pavement restoration required.

APPROVAL CONDITION IMM 240105: When applying to Street Opening Permit, provide documentation on how NSTAR Eversource Electric is meeting MCP.

APPROVAL CONDITION IMM 240105: Two-way traffic on Joy St must be maintained at all times.

APPROVAL CONDITION IMM 240105: There is an active City Project along Joy Street. Contractor to coordinate work zone impacts in this vicinity with Engineering at [engineering@somervillema.gov](mailto:engineering@somervillema.gov).

APPROVAL CONDITION MF 24/10/09: Construction schedule, especially for Joy St, will be coordinated based on existing and expected street occupancy permits in the area at the time of Street Occupancy Permit.

**Malik Drayton, Approved with Conditions**

APPROVAL CONDITION: MD20231106: Contractor shall take all necessary precautions to avoid damaging any tree or tree part with equipment.

APPROVAL CONDITION: MD20231106: All nearby street tree(s) shall be protected prior to and during all construction activities using TREE BOX or TREE WRAPS. . TREE BOX shall be constructed from 2 in. x 4 in. lumber creating a box around the border of the tree pit with 2 in. x 4 in. lumber standing straight up at the corners and wrapped with orange snow fence. Detail attached. . TREE WRAPS (TREE TRUNK WRAPPING PROTECTION LUMBER) shall consist of 2 in. x 4 in. and 8 ft. height lumber wired together in close spacing with zip ties or 16 gauge galvanized steel wire to form a protective enclosure around tree trunks. Use burlap to separate the wood from the bark if necessary to prevent wood from scraping or bruising bark. Do not use staples or puncture the trunk in any way.

APPROVAL CONDITION: MD20231106 Any tree roots less than two (2) inches in diameter that cannot be avoided during construction shall be carefully and cleanly cut with a clean pair of pruning shears or loppers. Roots are to be cut back flush with the edge of the trench. If any tree roots greater than two (2) inches in diameter are encountered, stop work immediately and contact the City Urban Forester. Any and all pruning of roots greater than 2 inches in diameter must be completed under the supervision of the City Urban Forester.

**Eric Weisman, Approved**

**Kimberly M. Wells, Approved**



CITY OF SOMERVILLE, MASSACHUSETTS  
CITY CLERK'S OFFICE  
KATJANA BALLANTYNE  
MAYOR

KIMBERLY M. WELLS  
CITY CLERK

November 5, 2024

**NOTICE OF PUBLIC HEARING**

You are hereby notified that the Somerville City Council will hold a Public Hearing on the following Petition. You are receiving this Notice because the Petitioner has reported that you own property that abuts the work that is being proposed. You and other members of the public are invited to attend and be heard at this Hearing.

**This meeting of the City Council will also be conducted via remote participation, online in a webinar hosted on the Zoom platform.**

You have three ways to be heard at this meeting:

1. To attend and be heard, enter the link exactly as it appears below into your internet browser any time before the meeting. You will then be asked to register for the meeting. After registering, you will receive an email with instructions to join the webinar when it starts.
2. You may also testify in person in the City Council Chamber, City Hall, 2<sup>nd</sup> Floor, 93 Highland Avenue, Somerville, MA 02143
3. If you are unable to attend but wish to be heard, you may send written comments by US mail to the City Clerk at the address below, or by email to [cityclerk@somervillema.gov](mailto:cityclerk@somervillema.gov). Your comments must arrive no later than 12 Noon on the day of the Hearing, in order to be sure they are conveyed to the Council.

**PETITION:** Eversource (NStar Electric) is applying for a Grant of Location to install approximately 4,098 feet of conduit and three new manholes in McGrath Highway, Washington Street, and Joy Street.

**PLACE:** [https://us02web.zoom.us/webinar/register/WN\\_9JXGfloUT6SJ5T1NjfZdUA](https://us02web.zoom.us/webinar/register/WN_9JXGfloUT6SJ5T1NjfZdUA) or City Council Chambers, City Hall, 2<sup>nd</sup> Floor, 93 Highland Avenue, Somerville, MA 02143

**TIME:** Thursday, November 14, 2024, at 7:00 PM.

**PURPOSE:** The work is necessary to accommodate increased load demand.

W.O. # 10826148



101 Linwood Street  
Somerville, MA 02143

October 30, 2024

Ms. Kimberly Wells  
Office of the City Clerk  
93 Highland Avenue  
Somerville, MA 02143

RE: McGrath Highway, Washington Street, Joy Street  
Somerville, MA  
W.O. #10826148

Dear Members of the Board:

The NSTAR Electric Company d/b/a Eversource Energy respectfully requests a Grant of Location for installation of approximately 4098 feet of conduit and three new manholes in McGrath Highway, Washington Street and Joy Street.

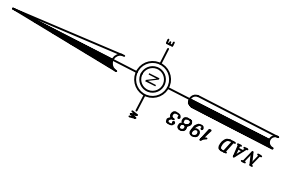
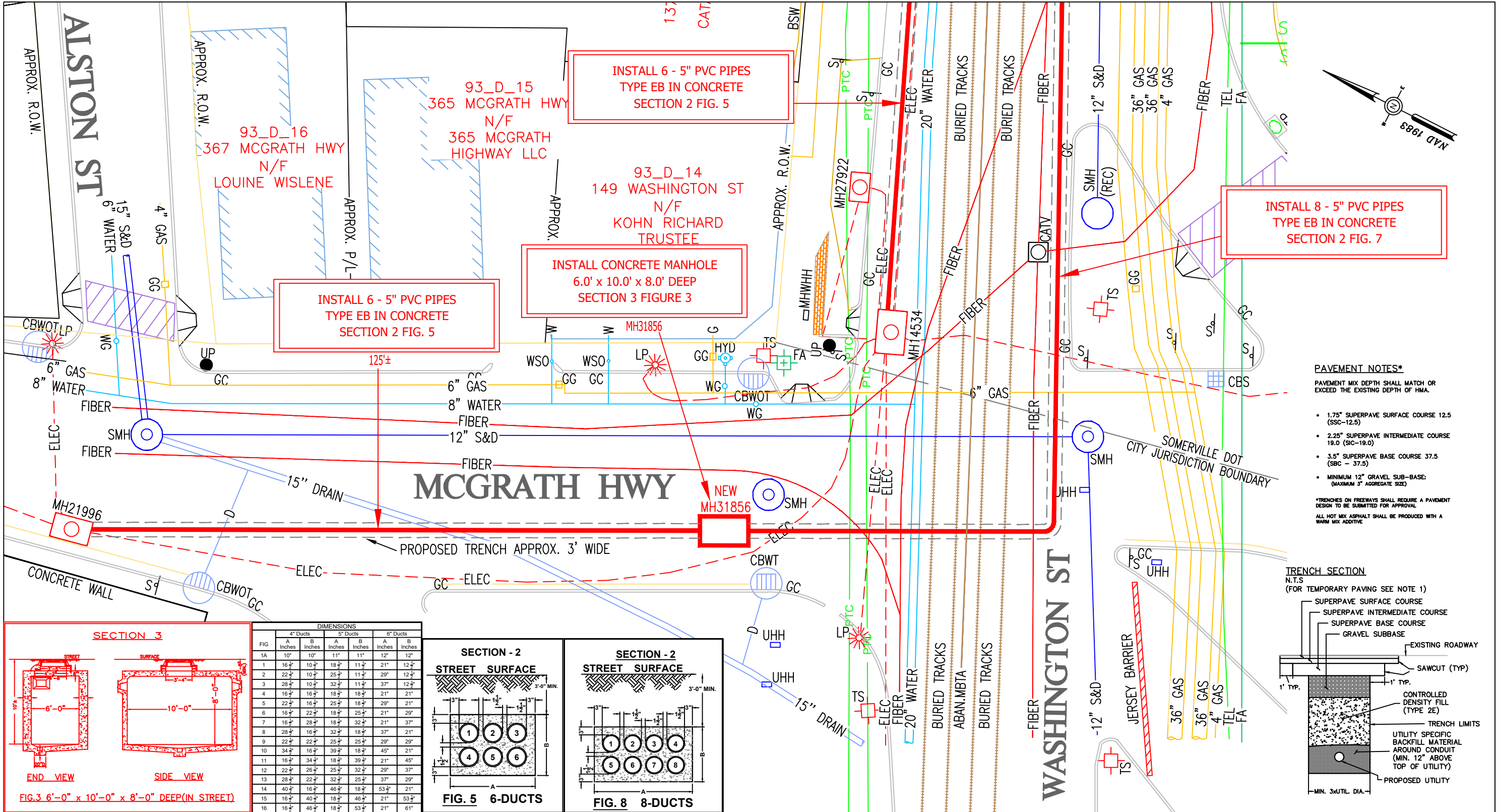
This work is necessary in order to increase load capacity which will support the growth of electrification in the area.

If you have any questions or concerns, please call Jaqueline Duffy at 617-629-3204.

Very truly yours,

*Kelly-Ann Correia*

Kelly-Ann Correia, Supervisor  
Rights and Permits



INSTALL 6 - 5" PVC PIPES  
TYPE EB IN CONCRETE  
SECTION 2 FIG. 5

INSTALL 6 - 5" PVC PIPES  
TYPE EB IN CONCRETE  
SECTION 2 FIG. 5

INSTALL CONCRETE MANHOLE  
6.0' x 10.0' x 8.0' DEEP  
SECTION 3 FIGURE 3

INSTALL 8 - 5" PVC PIPES  
TYPE EB IN CONCRETE  
SECTION 2 FIG. 7

- PAVEMENT NOTES\***
- PAVEMENT MIX DEPTH SHALL MATCH OR EXCEED THE EXISTING DEPTH OF HMA.
  - 1.75" SUPERPAVE SURFACE COURSE 12.5 (SSC-12.5)
  - 2.25" SUPERPAVE INTERMEDIATE COURSE 19.0 (SIC-19.0)
  - 3.5" SUPERPAVE BASE COURSE 37.5 (SBC - 37.5)
  - MINIMUM 12" GRAVEL SUB-BASE (MAXIMUM 3" AGGREGATE SIZE)
- \*TRENCHES ON FREEWAYS SHALL REQUIRE A PAVEMENT DESIGN TO BE SUBMITTED FOR APPROVAL.  
ALL HOT MIX ASPHALT SHALL BE PRODUCED WITH A WARM MIX ADDITIVE.

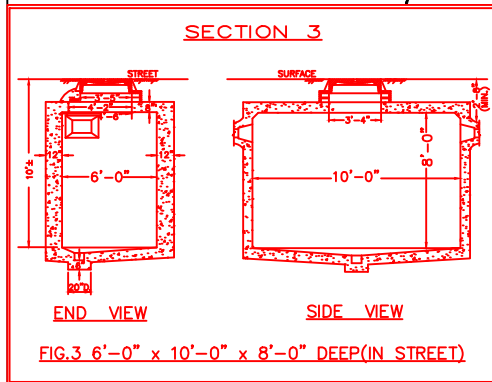
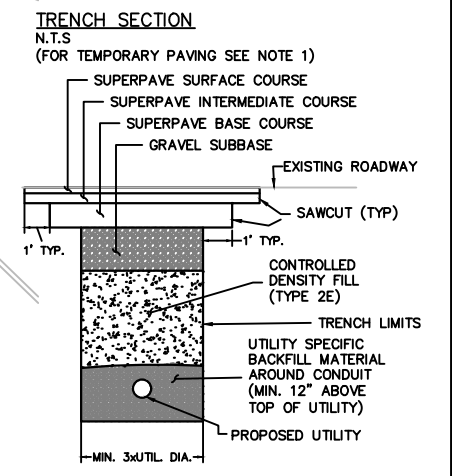
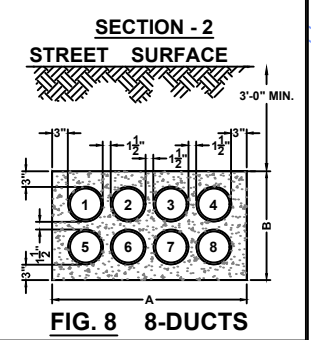
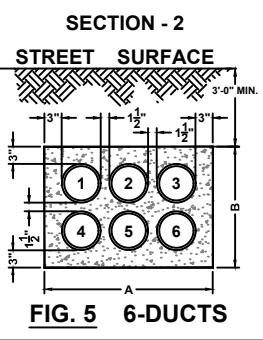


FIG	4" Ducts				5" Ducts				6" Ducts			
	A Inches	B Inches	A Inches	B Inches	A Inches	B Inches	A Inches	B Inches	A Inches	B Inches	A Inches	B Inches
1A	10"	10"	11"	11"	12"	12"						
1	16 1/2"	10 1/2"	18 1/2"	11 1/2"	21"	12 1/2"						
2	22 1/2"	10 1/2"	25 1/2"	11 1/2"	29"	12 1/2"						
3	28 1/2"	10 1/2"	32 1/2"	11 1/2"	37"	12 1/2"						
4	16 1/2"	16 1/2"	18 1/2"	18 1/2"	21"	21"						
5	22 1/2"	16 1/2"	25 1/2"	18 1/2"	29"	21"						
6	16 1/2"	22 1/2"	18 1/2"	25 1/2"	21"	29"						
7	16 1/2"	28 1/2"	18 1/2"	32 1/2"	21"	37"						
8	28 1/2"	16 1/2"	32 1/2"	18 1/2"	37"	21"						
9	22 1/2"	22 1/2"	25 1/2"	25 1/2"	29"	29"						
10	34 1/2"	16 1/2"	39 1/2"	18 1/2"	45"	21"						
11	16 1/2"	34 1/2"	18 1/2"	39 1/2"	21"	45"						
12	22 1/2"	28 1/2"	25 1/2"	32 1/2"	29"	37"						
13	28 1/2"	22 1/2"	32 1/2"	25 1/2"	37"	29"						
14	40 1/2"	16 1/2"	46 1/2"	18 1/2"	53 1/2"	21"						
15	16 1/2"	40 1/2"	18 1/2"	46 1/2"	21"	53 1/2"						
16	16 1/2"	46 1/2"	18 1/2"	53 1/2"	21"	61"						



**WARNING**  
PIPE TYPE CABLE  
IN THIS AREA



**NOTES:**  
DURING CONSTRUCTION, IF ANY OF THE DRAINAGE PIPES AT UTILITY CROSSING ARE DAMAGED, PROJECTS SECTION IS REQUESTING THAT DRAIN PIPES BE REPLACED FROM STRUCTURED TO STRUCTURE.

**MassDOT**

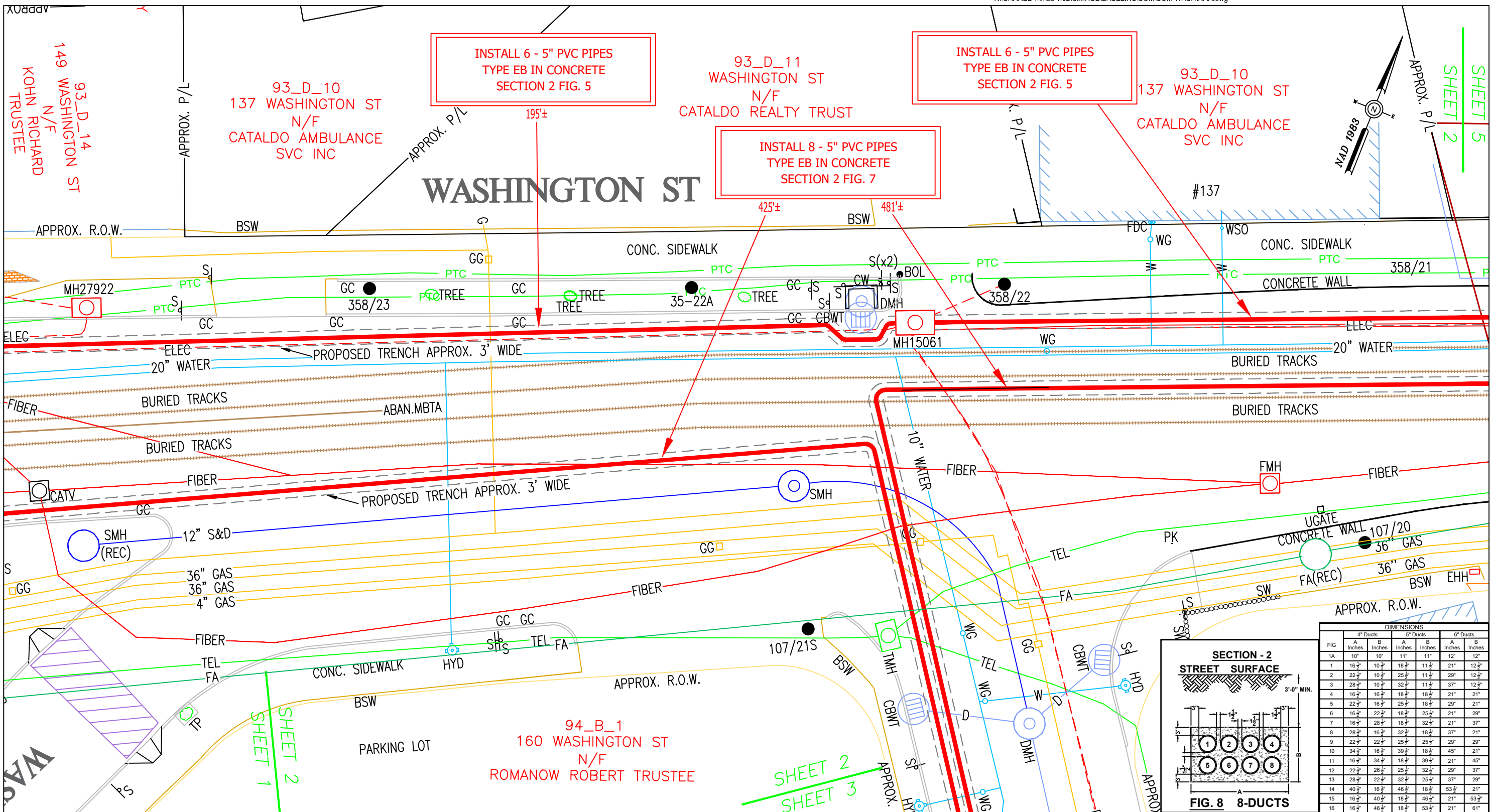
BY YOUR USE OF THE INFORMATION CONTAINED IN THIS MAP, YOU AGREE THAT NO WARRANTY OF ANY KIND, EXPRESS OR IMPLIED, IS GIVEN WITH RESPECT TO THE INFORMATION. NEITHER NSTAR ELECTRIC COMPANY, NSTAR GAS COMPANY NOR ITS PARENTS, AFFILIATES, OFFICERS, DIRECTORS, SHAREHOLDERS, EMPLOYEES OR AGENTS (COLLECTIVELY THE "NSTAR ENTITIES") SHALL BE LIABLE FOR ANY LOSS OR INJURY CAUSED IN WHOLE OR IN PART BY USE OF THIS INFORMATION, OR IN RELIANCE UPON IT, TO THE MAXIMUM EXTENT ALLOWED BY LAW. YOU AGREE BY YOUR ACCEPTANCE OF THE INFORMATION TO RELEASE, INDEMNIFY AND HOLD THE NSTAR ENTITIES HARMLESS FROM ANY SUCH LOSS OR INJURY.

THE INFORMATION MAY NOT REPRESENT A SURVEY, MAY NOT BE THE MOST COMPLETE AND IS SUBJECT TO CHANGE WITHOUT NOTICE. NO LIABILITY IS ASSUMED FOR THE ACCURACY OF THE INFORMATION, EITHER EXPRESSED OR IMPLIED. UNAUTHORIZED ATTEMPTS TO MODIFY THE INFORMATION OR USE THE INFORMATION FOR OTHER THAN ITS INTENDED PURPOSES ARE PROHIBITED.

**MASS. LAW**  
REQUIRES 72 HOURS ADVANCE NOTICE TO UTILITY COMPANIES BEFORE DIGGING BY ANYONE. CALL DIG-SAFE 1-888-344-7233

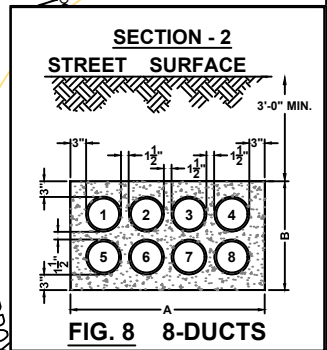
C#	313-22	<b>NSTAR EVERSOURCE</b> ELECTRIC d/b/a 1165 MASSACHUSETTS AVE. DORCHESTER, MASS. 02125
Ward #		
Work Order #	10826148	Plan of WASHINGTON STREET
Surveyed by:	BP/GC	SOMERVILLE
Research by:	GR	Showing PROPOSED CONDUIT LOCATION
Plotted by:	GR	
Proposed Structures:	GR	
Approved:	T THIBAUT	Scale 1"=20'
P#		Date NOVEMBER 28, 2022
		SHEET 1 of 11
		REV: MAY 30, 2024





**DIMENSIONS**

FIG	4" Ducts		5" Ducts		6" Ducts	
	A Inches	B Inches	A Inches	B Inches	A Inches	B Inches
1A	10"	10"	11"	11"	12"	12"
1	16 1/2"	10 1/2"	18 1/2"	11 1/2"	21 1/2"	12 1/2"
2	22 1/2"	10 1/2"	25 1/2"	11 1/2"	29 1/2"	12 1/2"
3	28 1/2"	10 1/2"	32 1/2"	11 1/2"	37 1/2"	12 1/2"
4	16 1/2"	16 1/2"	18 1/2"	18 1/2"	21 1/2"	21 1/2"
5	22 1/2"	16 1/2"	25 1/2"	18 1/2"	29 1/2"	21 1/2"
6	16 1/2"	22 1/2"	18 1/2"	25 1/2"	21 1/2"	29 1/2"
7	16 1/2"	28 1/2"	18 1/2"	32 1/2"	21 1/2"	37 1/2"
8	28 1/2"	16 1/2"	32 1/2"	18 1/2"	37 1/2"	21 1/2"
9	22 1/2"	22 1/2"	25 1/2"	25 1/2"	29 1/2"	29 1/2"
10	34 1/2"	16 1/2"	39 1/2"	18 1/2"	45 1/2"	21 1/2"
11	16 1/2"	34 1/2"	18 1/2"	39 1/2"	21 1/2"	45 1/2"
12	22 1/2"	28 1/2"	25 1/2"	32 1/2"	29 1/2"	37 1/2"
13	28 1/2"	22 1/2"	32 1/2"	25 1/2"	37 1/2"	29 1/2"
14	40 1/2"	16 1/2"	46 1/2"	18 1/2"	53 1/2"	21 1/2"
15	16 1/2"	40 1/2"	18 1/2"	46 1/2"	21 1/2"	53 1/2"
16	16 1/2"	46 1/2"	18 1/2"	53 1/2"	21 1/2"	61 1/2"



**WARNING**  
PIPE TYPE CABLE  
IN THIS AREA



**NOTES:**  
DURING CONSTRUCTION, IF ANY OF THE DRAINAGE PIPES AT UTILITY CROSSING ARE DAMAGED, PROJECTS SECTION IS REQUESTING THAT DRAIN PIPES BE REPLACED FROM STRUCTURED TO STRUCTURE.

BY YOUR USE OF THE INFORMATION CONTAINED IN THIS MAP, YOU AGREE THAT NO WARRANTY OF ANY KIND, EXPRESS OR IMPLIED, IS GIVEN WITH RESPECT TO THE INFORMATION. NEITHER NSTAR ELECTRIC COMPANY, NSTAR GAS COMPANY NOR ITS PARENTS, AFFILIATES, OFFICERS, DIRECTORS, SHAREHOLDERS, EMPLOYEES OR AGENTS (COLLECTIVELY THE "NSTAR ENTITIES") SHALL BE LIABLE FOR ANY LOSS OR INJURY CAUSED IN WHOLE OR IN PART BY USE OF THIS INFORMATION, OR IN RELIANCE UPON IT, TO THE MAXIMUM EXTENT ALLOWED BY LAW. YOU AGREE BY YOUR ACCEPTANCE OF THE INFORMATION TO RELEASE, INDEMNIFY AND HOLD THE NSTAR ENTITIES HARMLESS FROM ANY SUCH LOSS OR INJURY.

THE INFORMATION MAY NOT REPRESENT A SURVEY, MAY NOT BE THE MOST COMPLETE AND IS SUBJECT TO CHANGE WITHOUT NOTICE. NO LIABILITY IS ASSUMED FOR THE ACCURACY OF THE INFORMATION, EITHER EXPRESSED OR IMPLIED. UNAUTHORIZED ATTEMPTS TO MODIFY THE INFORMATION OR USE THE INFORMATION FOR OTHER THAN ITS INTENDED PURPOSES ARE PROHIBITED.

**MASS. LAW**  
REQUIRES 72 HOURS ADVANCE NOTICE TO UTILITY COMPANIES BEFORE DIGGING BY ANYONE. CALL DIG-SAFE 1-888-344-7233

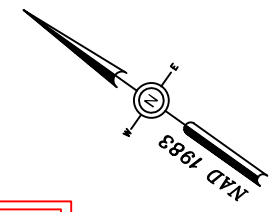
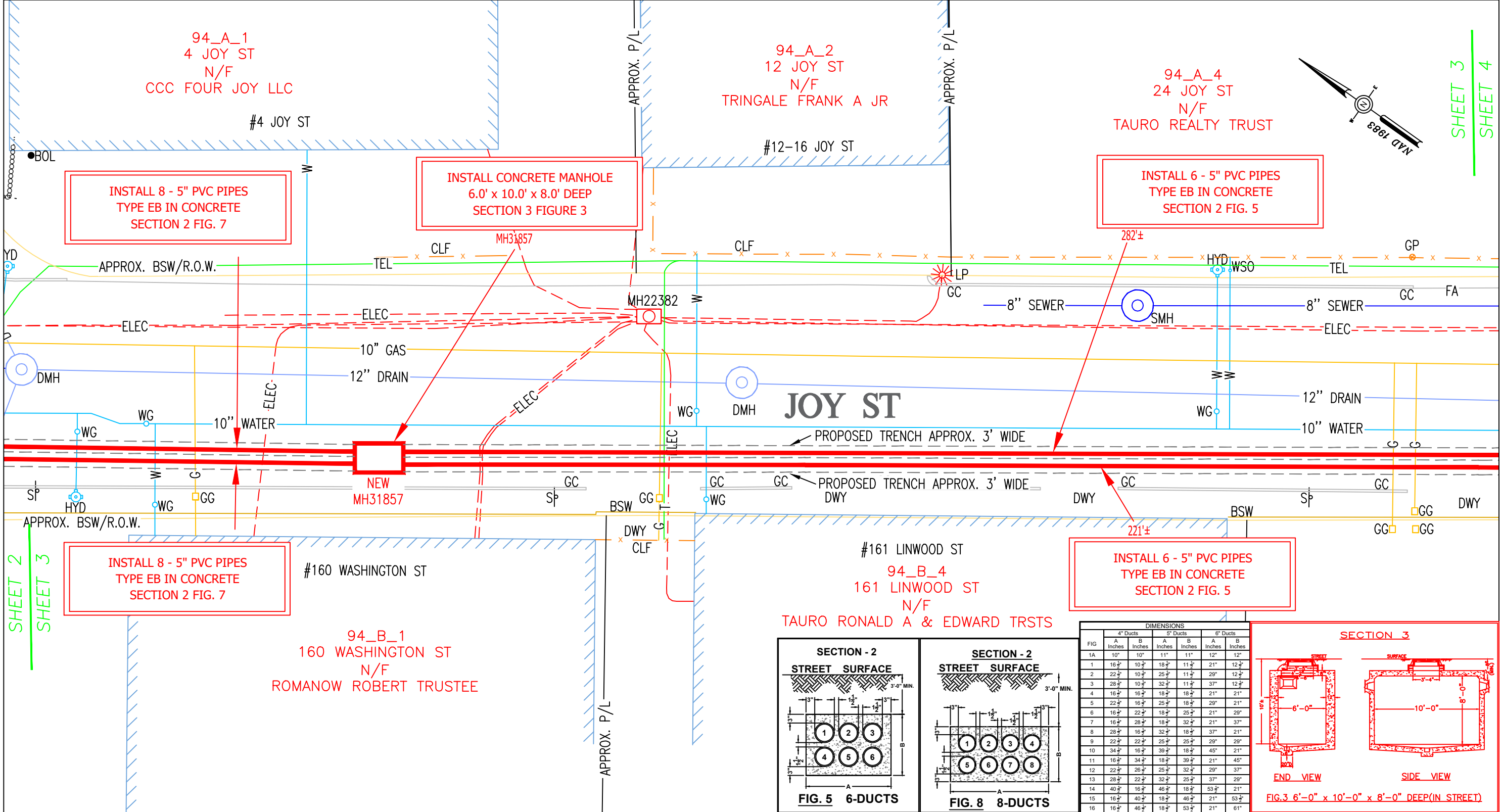
**NSTAR EVERSOURCE**  
ELECTRIC  
d/b/a  
1165 MASSACHUSETTS AVE. DORCHESTER, MASS. 02125

Plan of WASHINGTON STREET  
SOMERVILLE  
Showing PROPOSED CONDUIT LOCATION

C# 313-22  
Ward #  
Work Order # 10826148  
Surveyed by: BP/GC  
Research by: GR  
Plotted by: GR  
Proposed Structures: GR  
Approved: T THIBAUT  
P#

Scale 1"=20'  
SHEET 2 of 11

Date NOVEMBER 28, 2022  
REV: MAY 30, 2024



SHEET 3  
SHEET 4

SHEET 2  
SHEET 3

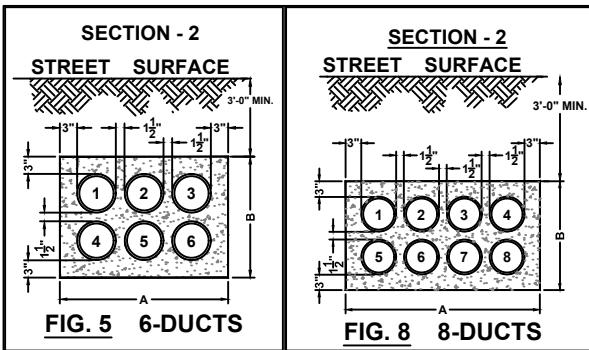
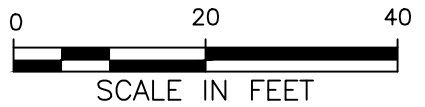
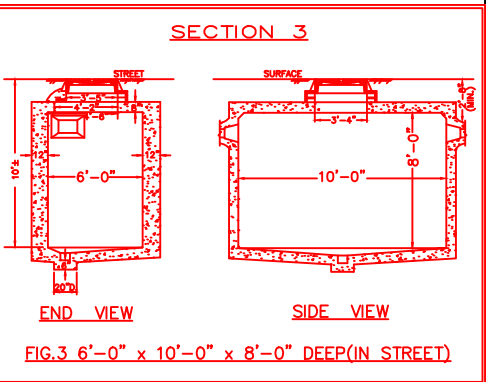


FIG	4" Ducts		5" Ducts		6" Ducts	
	A Inches	B Inches	A Inches	B Inches	A Inches	B Inches
1A	10"	10"	11"	11"	12"	12"
1	16 1/2"	10 1/2"	18 1/2"	11 1/2"	21"	12 1/2"
2	22 1/2"	10 1/2"	25 1/2"	11 1/2"	29"	12 1/2"
3	28 1/2"	10 1/2"	32 1/2"	11 1/2"	37"	12 1/2"
4	16 1/2"	16 1/2"	18 1/2"	18 1/2"	21"	21"
5	22 1/2"	16 1/2"	25 1/2"	18 1/2"	29"	21"
6	16 1/2"	22 1/2"	18 1/2"	25 1/2"	21"	29"
7	16 1/2"	28 1/2"	18 1/2"	32 1/2"	21"	37"
8	28 1/2"	16 1/2"	32 1/2"	18 1/2"	37"	21"
9	22 1/2"	22 1/2"	25 1/2"	25 1/2"	29"	29"
10	34 1/2"	16 1/2"	39 1/2"	18 1/2"	45"	21"
11	16 1/2"	34 1/2"	18 1/2"	39 1/2"	21"	45"
12	22 1/2"	26 1/2"	25 1/2"	32 1/2"	29"	37"
13	28 1/2"	22 1/2"	32 1/2"	25 1/2"	37"	29"
14	40 1/2"	16 1/2"	46 1/2"	18 1/2"	53 1/2"	21"
15	16 1/2"	40 1/2"	18 1/2"	46 1/2"	21"	53 1/2"
16	16 1/2"	46 1/2"	18 1/2"	53 1/2"	21"	61"



**NOTES:**  
DURING CONSTRUCTION, IF ANY OF THE DRAINAGE PIPES AT UTILITY CROSSING ARE DAMAGED, PROJECTS SECTION IS REQUESTING THAT DRAIN PIPES BE REPLACED FROM STRUCTURED TO STRUCTURE.

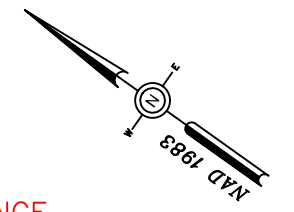
BY YOUR USE OF THE INFORMATION CONTAINED IN THIS MAP, YOU AGREE THAT NO WARRANTY OF ANY KIND, EXPRESS OR IMPLIED, IS GIVEN WITH RESPECT TO THE INFORMATION. NEITHER NSTAR ELECTRIC COMPANY, NSTAR GAS COMPANY NOR ITS PARENTS, AFFILIATES, OFFICERS, DIRECTORS, SHAREHOLDERS, EMPLOYEES OR AGENTS (COLLECTIVELY THE "NSTAR ENTITIES") SHALL BE LIABLE FOR ANY LOSS OR INJURY CAUSED IN WHOLE OR IN PART BY USE OF THIS INFORMATION OR IN RELIANCE UPON IT, TO THE MAXIMUM EXTENT ALLOWED BY LAW. YOU AGREE BY YOUR ACCEPTANCE OF THE INFORMATION TO RELEASE, INDEMNIFY AND HOLD THE NSTAR ENTITIES HARMLESS FROM ANY SUCH LOSS OR INJURY.

THE INFORMATION MAY NOT REPRESENT A SURVEY, MAY NOT BE THE MOST COMPLETE AND IS SUBJECT TO CHANGE WITHOUT NOTICE. NO LIABILITY IS ASSUMED FOR THE ACCURACY OF THE INFORMATION, EITHER EXPRESSED OR IMPLIED. UNAUTHORIZED ATTEMPTS TO MODIFY THE INFORMATION OR USE THE INFORMATION FOR OTHER THAN ITS INTENDED PURPOSES ARE PROHIBITED.

**MASS. LAW**  
REQUIRES 72 HOURS ADVANCE NOTICE TO UTILITY COMPANIES BEFORE DIGGING BY ANYONE. CALL DIG-SAFE 1-888-344-7233

C#	313-22	<b>NSTAR EVERSOURCE</b> ELECTRIC d/b/a 1165 MASSACHUSETTS AVE. DORCHESTER, MASS. 02125
Ward #		
Work Order #	10826148	Plan of WASHINGTON STREET
Surveyed by:	BP/GC	SOMERVILLE
Research by:	GR	Showing PROPOSED CONDUIT LOCATION
Plotted by:	GR	
Proposed Structures:	GR	
Approved:	T THIBAUT	Scale 1"=20'
P#		Date NOVEMBER 28, 2022
		SHEET 3 of 11
		REV: MAY 30, 2024

SHEET 3  
SHEET 4



APPROX. P/L

APPROX. P/L

APPROX. P/L

94\_A\_5  
30 JOY ST  
N/F  
TAURO REALTY TRUST

94\_A\_6  
40 JOY ST  
N/F  
40 JOY ST LLC

94\_A\_7  
48 JOY ST  
N/F  
CARDONE LAWRENCE

INSTALL 6 - 5" PVC PIPES  
TYPE EB IN CONCRETE  
SECTION 2 FIG. 5

INSTALL 6 - 5" PVC PIPES  
TYPE EB IN CONCRETE  
SECTION 2 FIG. 5

INSTALL 6 - 5" PVC PIPES  
TYPE EB IN CONCRETE  
SECTION 2 FIG. 5

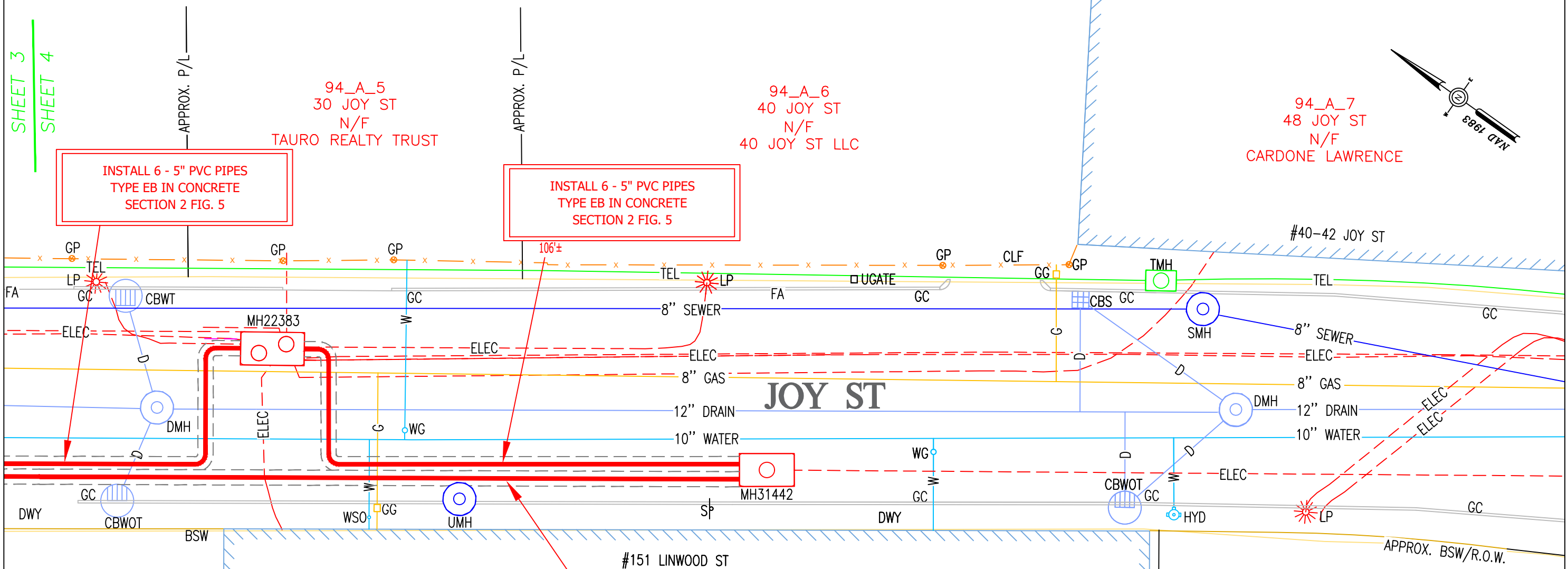
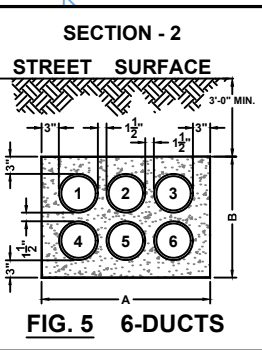


FIG	4" Ducts		5" Ducts		6" Ducts	
	A Inches	B Inches	A Inches	B Inches	A Inches	B Inches
1A	10"	10"	11"	11"	12"	12"
1	16 1/2"	10 1/2"	18 1/2"	11 1/2"	21"	12 1/2"
2	22 1/2"	10 1/2"	25 1/2"	11 1/2"	29"	12 1/2"
3	28 1/2"	10 1/2"	32 1/2"	11 1/2"	37"	12 1/2"
4	16 1/2"	16 1/2"	18 1/2"	18 1/2"	21"	21"
5	22 1/2"	16 1/2"	25 1/2"	18 1/2"	29"	21"
6	16 1/2"	22 1/2"	18 1/2"	25 1/2"	21"	29"
7	16 1/2"	28 1/2"	18 1/2"	32 1/2"	21"	37"
8	28 1/2"	16 1/2"	32 1/2"	18 1/2"	37"	21"
9	22 1/2"	22 1/2"	25 1/2"	25 1/2"	29"	29"
10	34 1/2"	16 1/2"	39 1/2"	18 1/2"	45"	21"
11	16 1/2"	34 1/2"	18 1/2"	39 1/2"	21"	45"
12	22 1/2"	26 1/2"	25 1/2"	32 1/2"	29"	37"
13	28 1/2"	22 1/2"	32 1/2"	25 1/2"	37"	29"
14	40 1/2"	16 1/2"	46 1/2"	18 1/2"	53 1/2"	21"
15	16 1/2"	40 1/2"	18 1/2"	46 1/2"	21"	53 1/2"
16	16 1/2"	46 1/2"	18 1/2"	53 1/2"	21"	61"



**NOTES:**  
DURING CONSTRUCTION, IF ANY OF THE DRAINAGE PIPES AT UTILITY CROSSING ARE DAMAGED, PROJECTS SECTION IS REQUESTING THAT DRAIN PIPES BE REPLACED FROM STRUCTURED TO STRUCTURE.

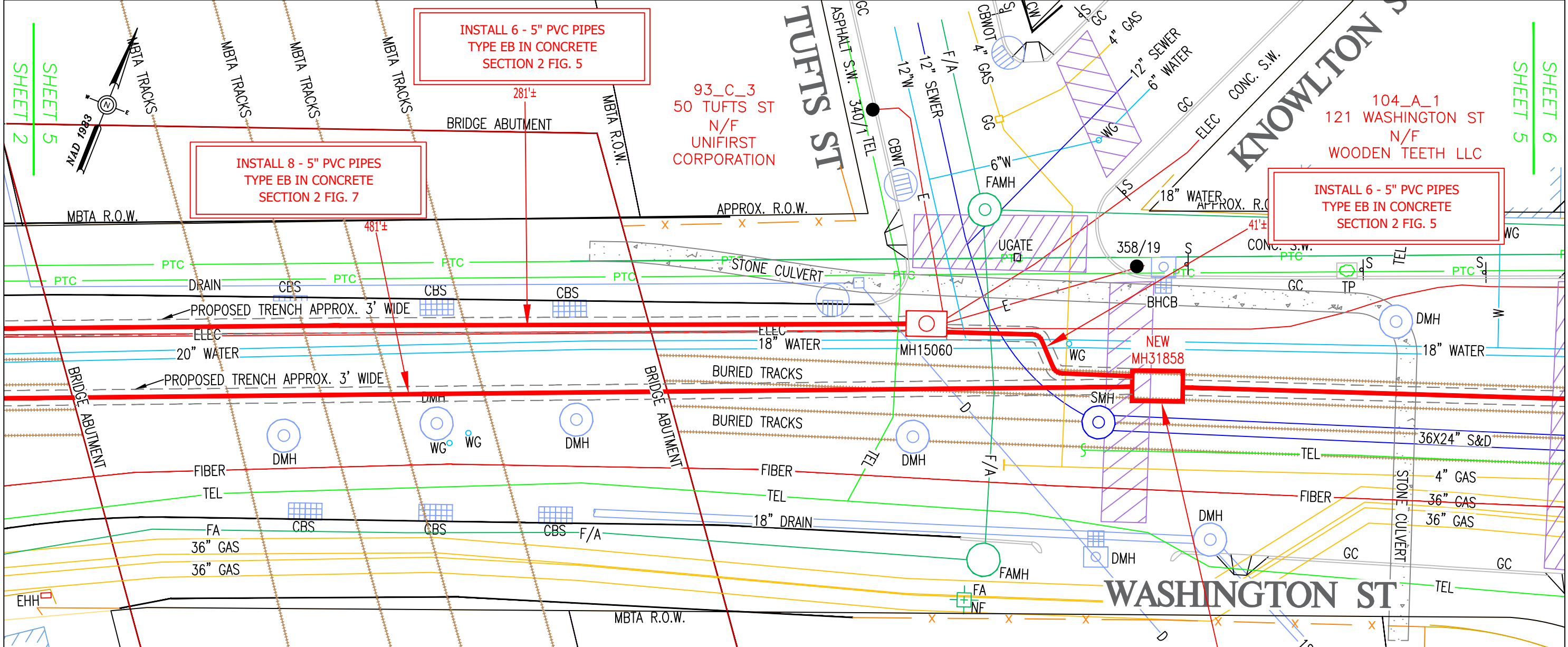
BY YOUR USE OF THE INFORMATION CONTAINED IN THIS MAP, YOU AGREE THAT NO WARRANTY OF ANY KIND, EXPRESS OR IMPLIED, IS GIVEN WITH RESPECT TO THE INFORMATION. NEITHER NSTAR ELECTRIC COMPANY, NSTAR GAS COMPANY NOR ITS PARENTS, AFFILIATES, OFFICERS, DIRECTORS, SHAREHOLDERS, EMPLOYEES OR AGENTS (COLLECTIVELY THE "NSTAR ENTITIES") SHALL BE LIABLE FOR ANY LOSS OR INJURY CAUSED IN WHOLE OR IN PART BY USE OF THIS INFORMATION OR IN RELIANCE UPON IT, TO THE MAXIMUM EXTENT ALLOWED BY LAW. YOU AGREE BY YOUR ACCEPTANCE OF THE INFORMATION TO RELEASE, INDEMNIFY AND HOLD THE NSTAR ENTITIES HARMLESS FROM ANY SUCH LOSS OR INJURY.

THE INFORMATION MAY NOT REPRESENT A SURVEY, MAY NOT BE THE MOST COMPLETE AND IS SUBJECT TO CHANGE WITHOUT NOTICE. NO LIABILITY IS ASSUMED FOR THE ACCURACY OF THE INFORMATION, EITHER EXPRESSED OR IMPLIED. UNAUTHORIZED ATTEMPTS TO MODIFY THE INFORMATION OR USE THE INFORMATION FOR OTHER THAN ITS INTENDED PURPOSES ARE PROHIBITED.

**MASS. LAW**  
REQUIRES 72 HOURS ADVANCE NOTICE TO UTILITY COMPANIES BEFORE DIGGING BY ANYONE. CALL DIG-SAFE 1-888-344-7233

C#	313-22	<b>NSTAR EVERSOURCE</b> ELECTRIC d/b/a 1165 MASSACHUSETTS AVE. DORCHESTER, MASS. 02125
Ward #		
Work Order #	10826148	Plan of WASHINGTON STREET
Surveyed by:	BP/GC	SOMERVILLE
Research by:	GR	Showing PROPOSED CONDUIT LOCATION
Plotted by:	GR	
Proposed Structures:	GR	
Approved:	T THIBAUT	Scale 1"=20'
P#		Date NOVEMBER 28, 2022
		SHEET 4 of 11
		REV: MAY 30, 2024





**INSTALL 6 - 5" PVC PIPES  
TYPE EB IN CONCRETE  
SECTION 2 FIG. 5**

**INSTALL 8 - 5" PVC PIPES  
TYPE EB IN CONCRETE  
SECTION 2 FIG. 7**

**INSTALL 6 - 5" PVC PIPES  
TYPE EB IN CONCRETE  
SECTION 2 FIG. 5**

**INSTALL CONCRETE MANHOLE  
6.0' x 10.0' x 8.0' DEEP  
SECTION 3 FIGURE 3**

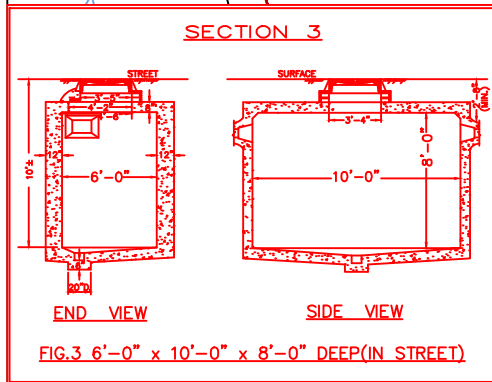
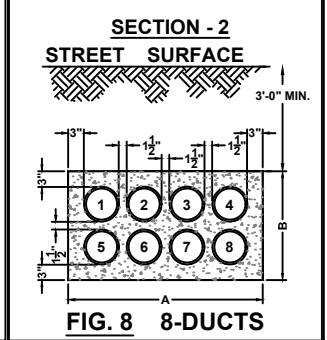
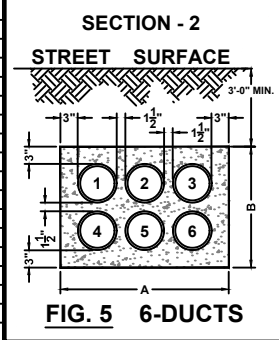


FIG	4" Ducts				5" Ducts				6" Ducts			
	A Inches	B Inches	A Inches	B Inches	A Inches	B Inches	A Inches	B Inches	A Inches	B Inches	A Inches	B Inches
1A	10"	10"	11"	11"	12"	12"						
1	16 1/2"	10 1/2"	18 1/2"	11 1/2"	21"	12 1/2"						
2	22 1/2"	10 1/2"	25 1/2"	11 1/2"	29"	12 1/2"						
3	28 1/2"	10 1/2"	32 1/2"	11 1/2"	37"	12 1/2"						
4	16 1/2"	16 1/2"	18 1/2"	18 1/2"	21"	21"						
5	22 1/2"	16 1/2"	25 1/2"	18 1/2"	29"	21"						
6	16 1/2"	22 1/2"	18 1/2"	25 1/2"	21"	29"						
7	16 1/2"	28 1/2"	18 1/2"	32 1/2"	21"	37"						
8	28 1/2"	16 1/2"	32 1/2"	18 1/2"	37"	21"						
9	22 1/2"	22 1/2"	25 1/2"	25 1/2"	29"	29"						
10	34 1/2"	16 1/2"	39 1/2"	18 1/2"	45"	21"						
11	16 1/2"	34 1/2"	18 1/2"	39 1/2"	21"	45"						
12	22 1/2"	28 1/2"	25 1/2"	32 1/2"	29"	37"						
13	28 1/2"	22 1/2"	32 1/2"	25 1/2"	37"	29"						
14	40 1/2"	16 1/2"	46 1/2"	18 1/2"	53 1/2"	21"						
15	16 1/2"	40 1/2"	18 1/2"	46 1/2"	21"	53 1/2"						
16	16 1/2"	46 1/2"	18 1/2"	53 1/2"	21"	61"						



**WARNING  
PIPE TYPE CABLE  
IN THIS AREA**



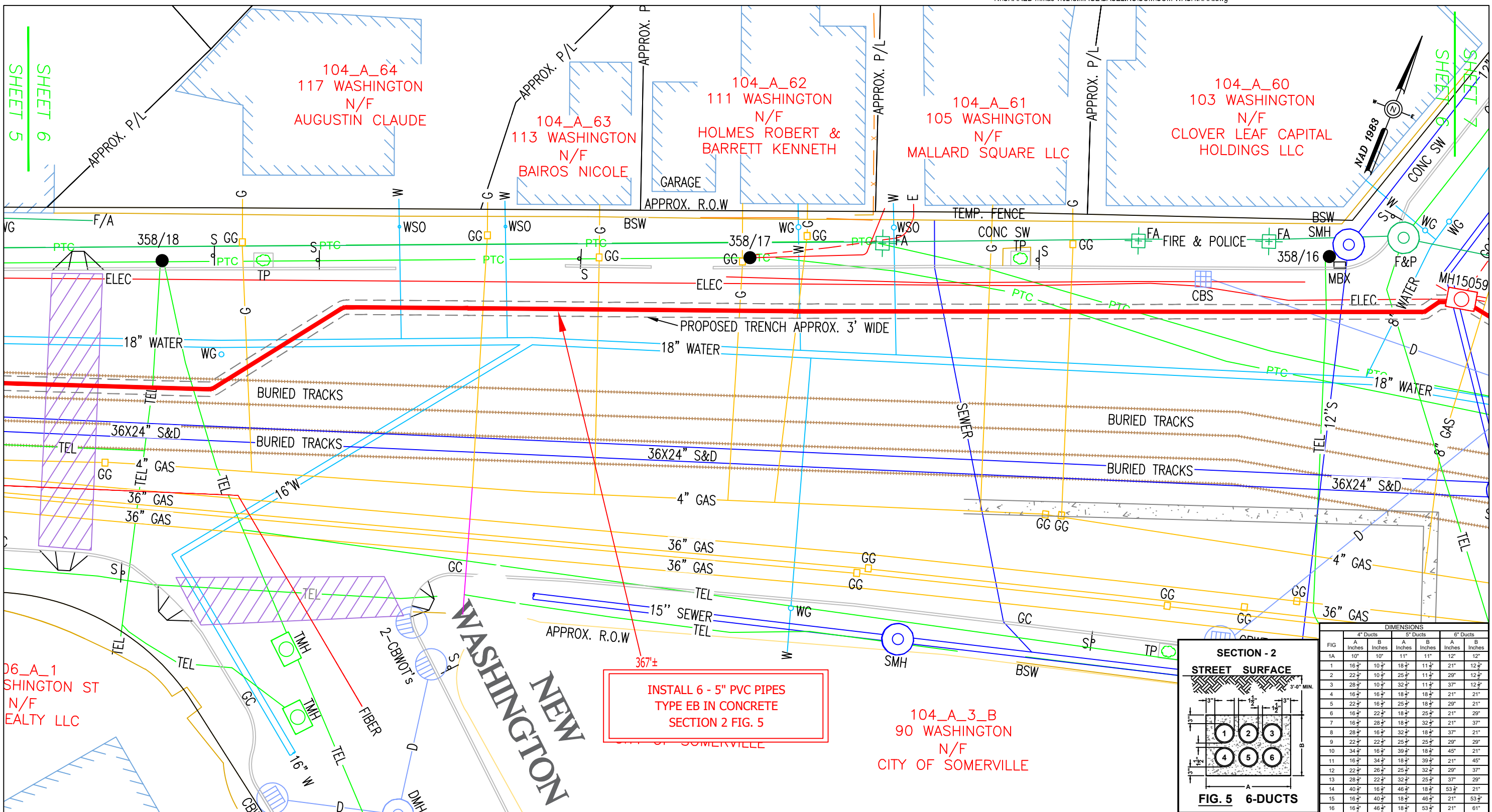
**NOTES:**  
DURING CONSTRUCTION, IF ANY OF THE DRAINAGE PIPES AT UTILITY CROSSING ARE DAMAGED, PROJECTS SECTION IS REQUESTING THAT DRAIN PIPES BE REPLACED FROM STRUCTURED TO STRUCTURE.

BY YOUR USE OF THE INFORMATION CONTAINED IN THIS MAP, YOU AGREE THAT NO WARRANTY OF ANY KIND, EXPRESS OR IMPLIED, IS GIVEN WITH RESPECT TO THE INFORMATION. NEITHER NSTAR ELECTRIC COMPANY, NSTAR GAS COMPANY NOR ITS PARENTS, AFFILIATES, OFFICERS, DIRECTORS, SHAREHOLDERS, EMPLOYEES OR AGENTS (COLLECTIVELY THE "NSTAR ENTITIES") SHALL BE LIABLE FOR ANY LOSS OR INJURY CAUSED IN WHOLE OR IN PART BY USE OF THIS INFORMATION, OR IN RELIANCE UPON IT, TO THE MAXIMUM EXTENT ALLOWED BY LAW. YOU AGREE BY YOUR ACCEPTANCE OF THE INFORMATION TO RELEASE, INDEMNIFY AND HOLD THE NSTAR ENTITIES HARMLESS FROM ANY SUCH LOSS OR INJURY.

THE INFORMATION MAY NOT REPRESENT A SURVEY, MAY NOT BE THE MOST COMPLETE AND IS SUBJECT TO CHANGE WITHOUT NOTICE. NO LIABILITY IS ASSUMED FOR THE ACCURACY OF THE INFORMATION, EITHER EXPRESSED OR IMPLIED. UNAUTHORIZED ATTEMPTS TO MODIFY THE INFORMATION OR USE THE INFORMATION FOR OTHER THAN ITS INTENDED PURPOSES ARE PROHIBITED.

**MASS. LAW**  
REQUIRES 72 HOURS ADVANCE NOTICE TO UTILITY COMPANIES BEFORE DIGGING BY ANYONE. CALL DIG-SAFE 1-888-344-7233

C#	313-22	<b>NSTAR EVERSOURCE</b> ELECTRIC d/b/a 1165 MASSACHUSETTS AVE. DORCHESTER, MASS. 02125
Ward #		
Work Order #	10826148	Plan of WASHINGTON STREET
Surveyed by:	BP/GC	SOMERVILLE
Research by:	GR	Showing PROPOSED CONDUIT LOCATION
Plotted by:	GR	
Proposed Structures:	GR	
Approved:	T THIBAUT	Scale 1"=20'      Date NOVEMBER 28, 2022
P#		SHEET 5 of 11      REV: MAY 30, 2024



**WARNING**  
**PIPE TYPE CABLE**  
**IN THIS AREA**



**NOTES:**  
 DURING CONSTRUCTION, IF ANY OF THE DRAINAGE PIPES AT UTILITY CROSSING ARE DAMAGED, PROJECTS SECTION IS REQUESTING THAT DRAIN PIPES BE REPLACED FROM STRUCTURED TO STRUCTURE.

BY YOUR USE OF THE INFORMATION CONTAINED IN THIS MAP, YOU AGREE THAT NO WARRANTY OF ANY KIND, EXPRESS OR IMPLIED, IS GIVEN WITH RESPECT TO THE INFORMATION. NEITHER NSTAR ELECTRIC COMPANY, NSTAR GAS COMPANY NOR ITS PARENTS, AFFILIATES, OFFICERS, DIRECTORS, SHAREHOLDERS, EMPLOYEES OR AGENTS (COLLECTIVELY THE "NSTAR ENTITIES") SHALL BE LIABLE FOR ANY LOSS OR INJURY CAUSED IN WHOLE OR IN PART BY USE OF THIS INFORMATION OR IN RELIANCE UPON IT, TO THE MAXIMUM EXTENT ALLOWED BY LAW. YOU AGREE BY YOUR ACCEPTANCE OF THE INFORMATION TO RELEASE, INDEMNIFY AND HOLD THE NSTAR ENTITIES HARMLESS FROM ANY SUCH LOSS OR INJURY.

THE INFORMATION MAY NOT REPRESENT A SURVEY, MAY NOT BE THE MOST COMPLETE AND IS SUBJECT TO CHANGE WITHOUT NOTICE. NO LIABILITY IS ASSUMED FOR THE ACCURACY OF THE INFORMATION, EITHER EXPRESSED OR IMPLIED. UNAUTHORIZED ATTEMPTS TO MODIFY THE INFORMATION OR USE THE INFORMATION FOR OTHER THAN ITS INTENDED PURPOSES ARE PROHIBITED.

**MASS. LAW**  
 REQUIRES 72 HOURS ADVANCE NOTICE TO UTILITY COMPANIES BEFORE DIGGING BY ANYONE. CALL DIG-SAFE 1-888-344-7233

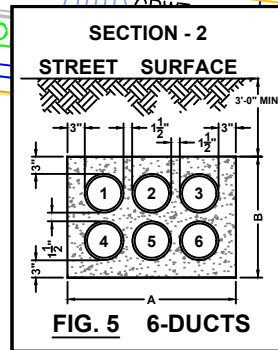


FIG	4" Ducts		5" Ducts		6" Ducts	
	A Inches	B Inches	A Inches	B Inches	A Inches	B Inches
1A	10"	10"	11"	11"	12"	12"
1	16 1/2"	10 1/2"	18 1/2"	11 1/2"	21"	12 1/2"
2	22 1/2"	10 1/2"	25 1/2"	11 1/2"	29"	12 1/2"
3	28 1/2"	10 1/2"	32 1/2"	11 1/2"	37"	12 1/2"
4	16 1/2"	16 1/2"	18 1/2"	18 1/2"	21"	21"
5	22 1/2"	16 1/2"	25 1/2"	18 1/2"	29"	21"
6	16 1/2"	22 1/2"	18 1/2"	25 1/2"	21"	29"
7	16 1/2"	28 1/2"	18 1/2"	32 1/2"	21"	37"
8	28 1/2"	16 1/2"	32 1/2"	18 1/2"	37"	21"
9	22 1/2"	22 1/2"	25 1/2"	25 1/2"	29"	29"
10	34 1/2"	16 1/2"	39 1/2"	18 1/2"	45"	21"
11	16 1/2"	34 1/2"	18 1/2"	39 1/2"	21"	45"
12	22 1/2"	28 1/2"	25 1/2"	32 1/2"	29"	37"
13	28 1/2"	22 1/2"	32 1/2"	25 1/2"	37"	29"
14	40 1/2"	16 1/2"	46 1/2"	18 1/2"	53 1/2"	21"
15	16 1/2"	40 1/2"	18 1/2"	46 1/2"	21"	53 1/2"
16	16 1/2"	46 1/2"	18 1/2"	53 1/2"	21"	61"

C# 313-22  
 Ward #  
 Work Order # 10826148  
 Surveyed by: BP/GC  
 Research by: GR  
 Plotted by: GR  
 Proposed Structures: GR  
 Approved: T THIBAUT  
 P#

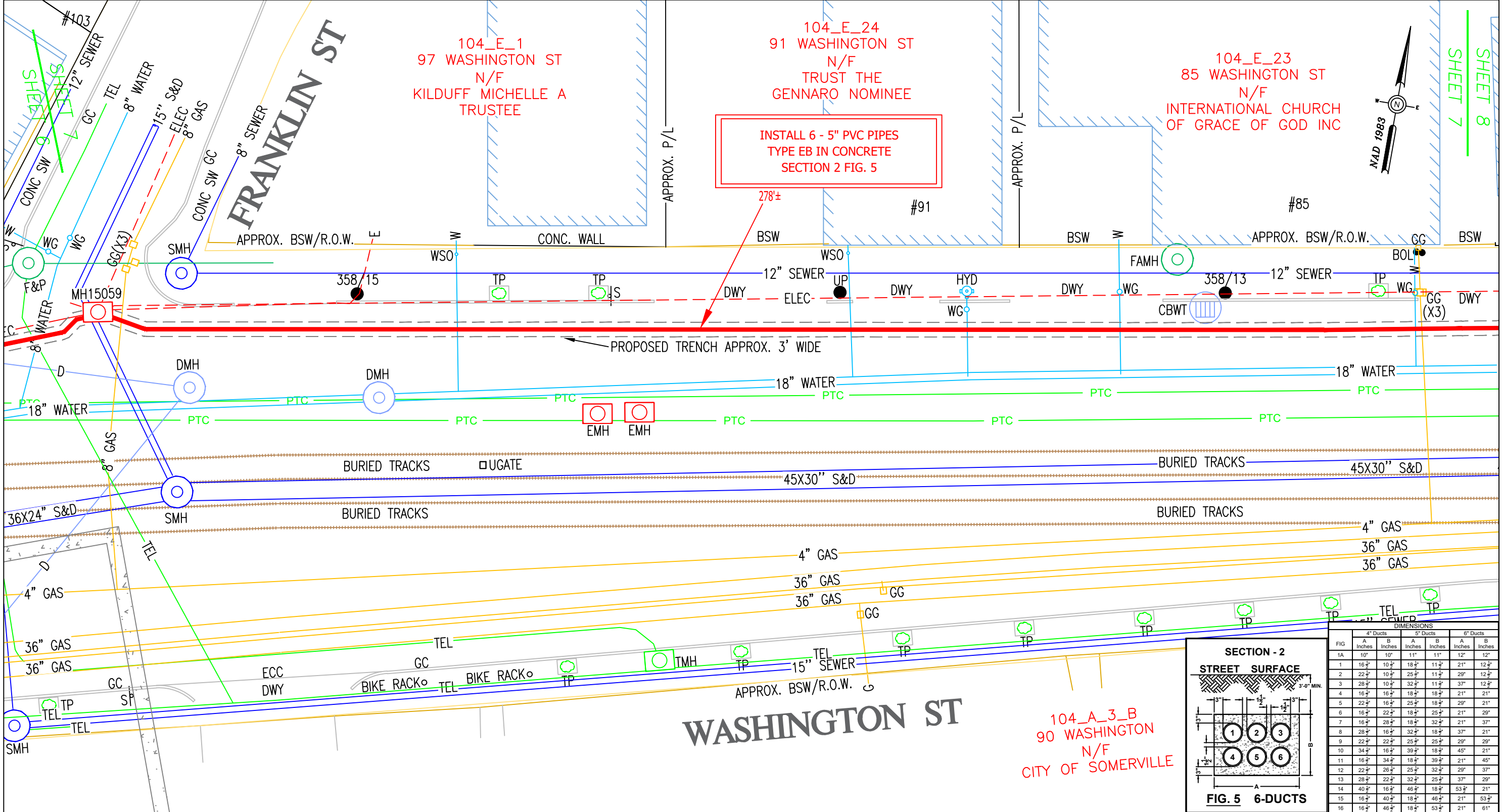
**NSTAR EVERSOURCE**  
 ELECTRIC  
 d/b/a  
 1165 MASSACHUSETTS AVE. DORCHESTER, MASS. 02125

Plan of WASHINGTON STREET  
 SOMERVILLE  
 Showing PROPOSED CONDUIT LOCATION

Scale 1"=20'  
 SHEET 6 of 11

Date NOVEMBER 28, 2022  
 REV: MAY 30, 2024





INSTALL 6 - 5" PVC PIPES  
TYPE EB IN CONCRETE  
SECTION 2 FIG. 5

PROPOSED TRENCH APPROX. 3' WIDE

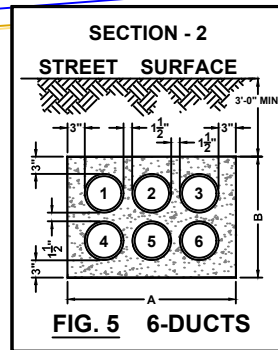


FIG	4" Ducts		5" Ducts		6" Ducts	
	A Inches	B Inches	A Inches	B Inches	A Inches	B Inches
1A	10"	10"	11"	11"	12"	12"
1	16 1/2"	10 1/2"	18 1/2"	11 1/2"	21"	12 1/2"
2	22 1/2"	10 1/2"	25 1/2"	11 1/2"	29"	12 1/2"
3	28 1/2"	10 1/2"	32 1/2"	11 1/2"	37"	12 1/2"
4	16 1/2"	16 1/2"	18 1/2"	18 1/2"	21"	21"
5	22 1/2"	16 1/2"	25 1/2"	18 1/2"	29"	21"
6	16 1/2"	22 1/2"	18 1/2"	25 1/2"	21"	29"
7	16 1/2"	28 1/2"	18 1/2"	32 1/2"	21"	37"
8	28 1/2"	16 1/2"	32 1/2"	18 1/2"	37"	21"
9	22 1/2"	22 1/2"	25 1/2"	25 1/2"	29"	29"
10	34 1/2"	16 1/2"	39 1/2"	18 1/2"	45"	21"
11	16 1/2"	34 1/2"	18 1/2"	39 1/2"	21"	45"
12	22 1/2"	28 1/2"	25 1/2"	32 1/2"	29"	37"
13	28 1/2"	22 1/2"	32 1/2"	25 1/2"	37"	29"
14	40 1/2"	16 1/2"	46 1/2"	18 1/2"	53 1/2"	21"
15	16 1/2"	40 1/2"	18 1/2"	46 1/2"	21"	53 1/2"
16	16 1/2"	46 1/2"	18 1/2"	53 1/2"	21"	61"

WARNING  
PIPE TYPE CABLE  
IN THIS AREA



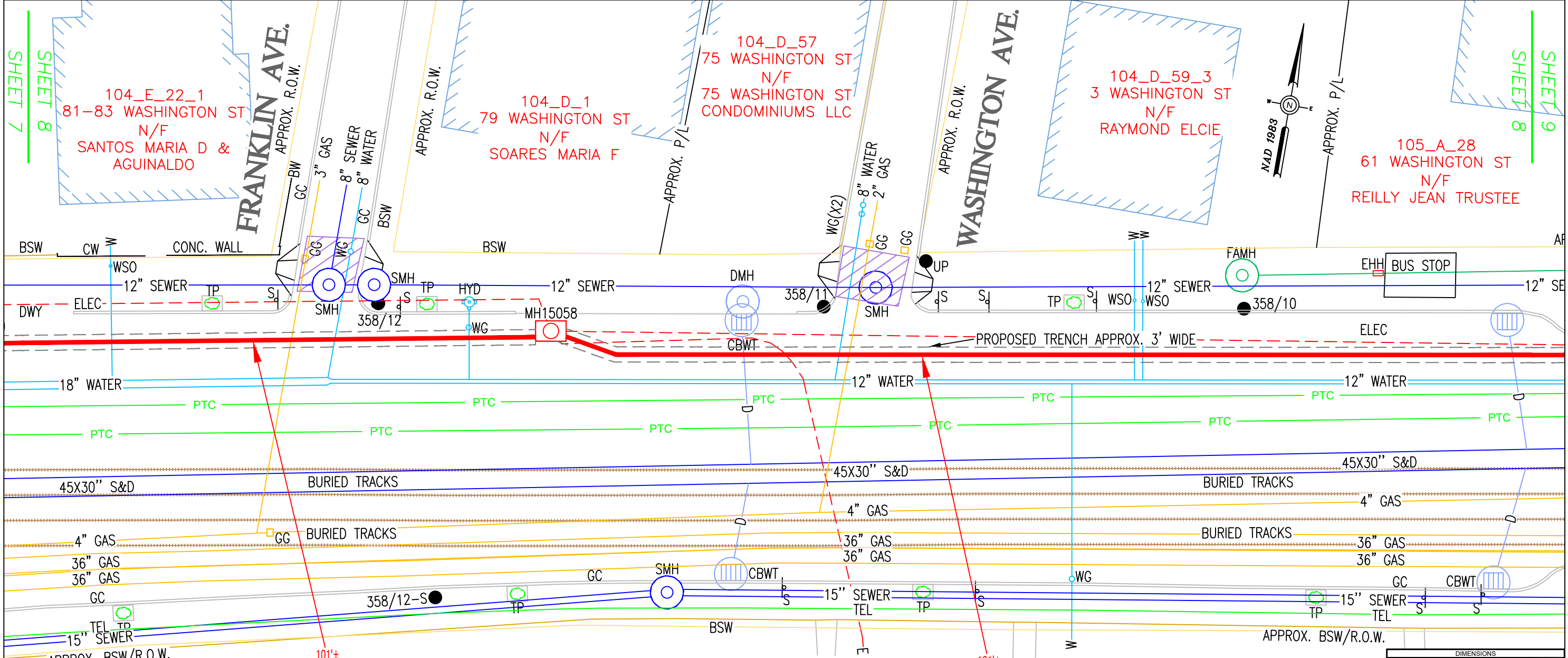
**NOTES:**  
DURING CONSTRUCTION, IF ANY OF THE DRAINAGE PIPES AT UTILITY CROSSING ARE DAMAGED, PROJECTS SECTION IS REQUESTING THAT DRAIN PIPES BE REPLACED FROM STRUCTURED TO STRUCTURE.

BY YOUR USE OF THE INFORMATION CONTAINED IN THIS MAP, YOU AGREE THAT NO WARRANTY OF ANY KIND, EXPRESS OR IMPLIED, IS GIVEN WITH RESPECT TO THE INFORMATION. NEITHER NSTAR ELECTRIC COMPANY, NSTAR GAS COMPANY NOR ITS PARENTS, AFFILIATES, OFFICERS, DIRECTORS, SHAREHOLDERS, EMPLOYEES OR AGENTS (COLLECTIVELY THE "NSTAR ENTITIES") SHALL BE LIABLE FOR ANY LOSS OR INJURY CAUSED IN WHOLE OR IN PART BY USE OF THIS INFORMATION OR IN RELIANCE UPON IT, TO THE MAXIMUM EXTENT ALLOWED BY LAW. YOU AGREE BY YOUR ACCEPTANCE OF THE INFORMATION TO RELEASE, INDEMNIFY AND HOLD THE NSTAR ENTITIES HARMLESS FROM ANY SUCH LOSS OR INJURY.

THE INFORMATION MAY NOT REPRESENT A SURVEY, MAY NOT BE THE MOST COMPLETE AND IS SUBJECT TO CHANGE WITHOUT NOTICE. NO LIABILITY IS ASSUMED FOR THE ACCURACY OF THE INFORMATION, EITHER EXPRESSED OR IMPLIED. UNAUTHORIZED ATTEMPTS TO MODIFY THE INFORMATION OR USE THE INFORMATION FOR OTHER THAN ITS INTENDED PURPOSES ARE PROHIBITED.

**MASS. LAW**  
REQUIRES 72 HOURS ADVANCE NOTICE TO UTILITY COMPANIES  
BEFORE DIGGING BY ANYONE. CALL DIG-SAFE 1-888-344-7233

C#	313-22	<b>NSTAR EVERSOURCE</b> ELECTRIC d/b/a 1165 MASSACHUSETTS AVE. DORCHESTER, MASS. 02125
Ward #		
Work Order #	10826148	Plan of WASHINGTON STREET SOMERVILLE
Surveyed by:	BP/GC	Showing PROPOSED CONDUIT LOCATION
Research by:	GR	
Plotted by:	GR	
Proposed Structures:	GR	
Approved:	T THIBAUT	Scale 1"=20' Date NOVEMBER 28, 2022
P#		SHEET 7 of 11 REV: MAY 30, 2024



INSTALL 6 - 5" PVC PIPES  
TYPE EB IN CONCRETE  
SECTION 2 FIG. 5

INSTALL 6 - 5" PVC PIPES  
TYPE EB IN CONCRETE  
SECTION 2 FIG. 5

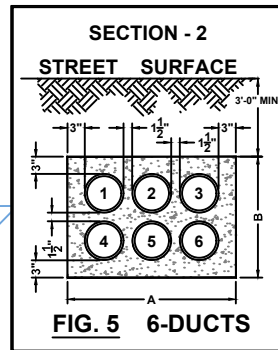


FIG	DIMENSIONS					
	4" Ducts		5" Ducts		6" Ducts	
	A Inches	B Inches	A Inches	B Inches	A Inches	B Inches
1A	10"	10"	11"	11"	12"	12"
1	16 1/2"	10 1/2"	18 1/2"	11 1/2"	21"	12 1/2"
2	22 1/2"	10 1/2"	25 1/2"	11 1/2"	29"	12 1/2"
3	28 1/2"	10 1/2"	32 1/2"	11 1/2"	37"	12 1/2"
4	16 1/2"	16 1/2"	18 1/2"	18 1/2"	21"	21"
5	22 1/2"	16 1/2"	25 1/2"	18 1/2"	29"	21"
6	16 1/2"	22 1/2"	18 1/2"	25 1/2"	21"	29"
7	16 1/2"	28 1/2"	18 1/2"	32 1/2"	21"	37"
8	28 1/2"	16 1/2"	32 1/2"	18 1/2"	37"	21"
9	22 1/2"	22 1/2"	25 1/2"	25 1/2"	29"	29"
10	34 1/2"	16 1/2"	39 1/2"	18 1/2"	45"	21"
11	16 1/2"	34 1/2"	18 1/2"	39 1/2"	21"	45"
12	22 1/2"	28 1/2"	25 1/2"	32 1/2"	29"	37"
13	28 1/2"	22 1/2"	32 1/2"	25 1/2"	37"	29"
14	40 1/2"	16 1/2"	46 1/2"	18 1/2"	53 1/2"	21"
15	16 1/2"	40 1/2"	18 1/2"	46 1/2"	21"	53 1/2"
16	16 1/2"	46 1/2"	18 1/2"	53 1/2"	21"	61"

**WARNING**  
PIPE TYPE CABLE  
IN THIS AREA



**NOTES:**  
DURING CONSTRUCTION, IF ANY OF THE DRAINAGE PIPES AT UTILITY CROSSING ARE DAMAGED, PROJECTS SECTION IS REQUESTING THAT DRAIN PIPES BE REPLACED FROM STRUCTURED TO STRUCTURE.

BY YOUR USE OF THE INFORMATION CONTAINED IN THIS MAP, YOU AGREE THAT NO WARRANTY OF ANY KIND, EXPRESS OR IMPLIED, IS GIVEN WITH RESPECT TO THE INFORMATION. NEITHER NSTAR ELECTRIC COMPANY, NSTAR GAS COMPANY NOR ITS PARENTS, AFFILIATES, OFFICERS, DIRECTORS, SHAREHOLDERS, EMPLOYEES OR AGENTS (COLLECTIVELY THE "NSTAR ENTITIES") SHALL BE LIABLE FOR ANY LOSS OR INJURY CAUSED IN WHOLE OR IN PART BY USE OF THIS INFORMATION, OR IN RELIANCE UPON IT, TO THE MAXIMUM EXTENT ALLOWED BY LAW. YOU AGREE BY YOUR ACCEPTANCE OF THE INFORMATION TO RELEASE, INDEMNIFY AND HOLD THE NSTAR ENTITIES HARMLESS FROM ANY SUCH LOSS OR INJURY.

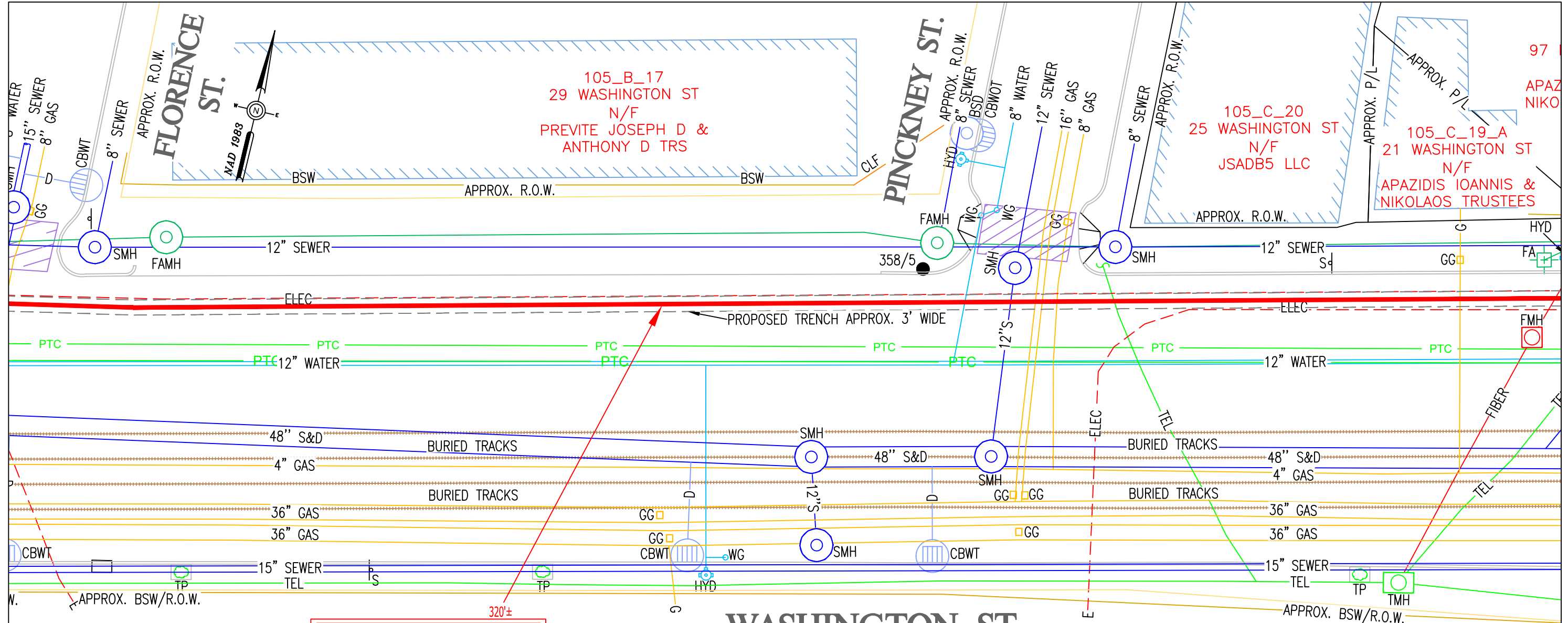
THE INFORMATION MAY NOT REPRESENT A SURVEY, MAY NOT BE THE MOST COMPLETE AND IS SUBJECT TO CHANGE WITHOUT NOTICE. NO LIABILITY IS ASSUMED FOR THE ACCURACY OF THE INFORMATION, EITHER EXPRESSED OR IMPLIED. UNAUTHORIZED ATTEMPTS TO MODIFY THE INFORMATION OR USE THE INFORMATION FOR OTHER THAN ITS INTENDED PURPOSES ARE PROHIBITED.

**MASS. LAW**  
REQUIRES 72 HOURS ADVANCE NOTICE TO UTILITY COMPANIES BEFORE DIGGING BY ANYONE. CALL DIG-SAFE 1-888-344-7233

C#	313-22	<b>NSTAR EVERSOURCE</b> ELECTRIC d/b/a 1165 MASSACHUSETTS AVE. DORCHESTER, MASS. 02125
Ward #		
Work Order #	10826148	Plan of WASHINGTON STREET
Surveyed by:	BP/GC	SOMERVILLE
Research by:	GR	Showing PROPOSED CONDUIT LOCATION
Plotted by:	GR	
Proposed Structures:	GR	
Approved:	T THIBAUT	Scale 1"=20'
P#		Date NOVEMBER 28, 2022
		SHEET 8 of 11
		REV: MAY 30, 2024

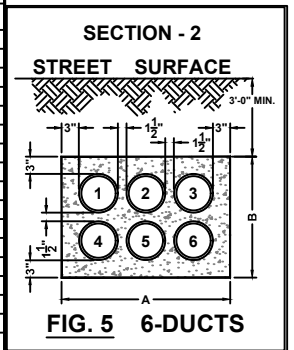






INSTALL 6 - 5" PVC PIPES  
TYPE EB IN CONCRETE  
SECTION 2 FIG. 5

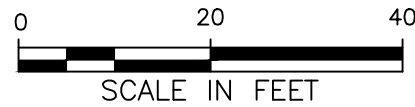
FIG	4" Ducts				5" Ducts				6" Ducts			
	A Inches	B Inches	A Inches	B Inches	A Inches	B Inches	A Inches	B Inches	A Inches	B Inches	A Inches	B Inches
1A	10"	10"	11"	11"	12"	12"						
1	16 1/2"	10 1/2"	18 1/2"	11 1/2"	21"	12 1/2"						
2	22 1/2"	10 1/2"	25 1/2"	11 1/2"	29"	12 1/2"						
3	28 1/2"	10 1/2"	32 1/2"	11 1/2"	37"	12 1/2"						
4	16 1/2"	16 1/2"	18 1/2"	18 1/2"	21"	21"						
5	22 1/2"	16 1/2"	25 1/2"	18 1/2"	29"	21"						
6	16 1/2"	22 1/2"	18 1/2"	25 1/2"	21"	29"						
7	16 1/2"	28 1/2"	18 1/2"	32 1/2"	21"	37"						
8	28 1/2"	16 1/2"	32 1/2"	18 1/2"	37"	21"						
9	22 1/2"	22 1/2"	25 1/2"	25 1/2"	29"	29"						
10	34 1/2"	16 1/2"	39 1/2"	18 1/2"	45"	21"						
11	16 1/2"	34 1/2"	18 1/2"	39 1/2"	21"	45"						
12	22 1/2"	26 1/2"	25 1/2"	32 1/2"	29"	37"						
13	28 1/2"	22 1/2"	32 1/2"	25 1/2"	37"	29"						
14	40 1/2"	16 1/2"	46 1/2"	18 1/2"	53 1/2"	21"						
15	16 1/2"	40 1/2"	18 1/2"	46 1/2"	21"	53 1/2"						
16	16 1/2"	46 1/2"	18 1/2"	53 1/2"	21"	61"						



SHEET 9

SHEET 11

**WARNING**  
PIPE TYPE CABLE  
IN THIS AREA



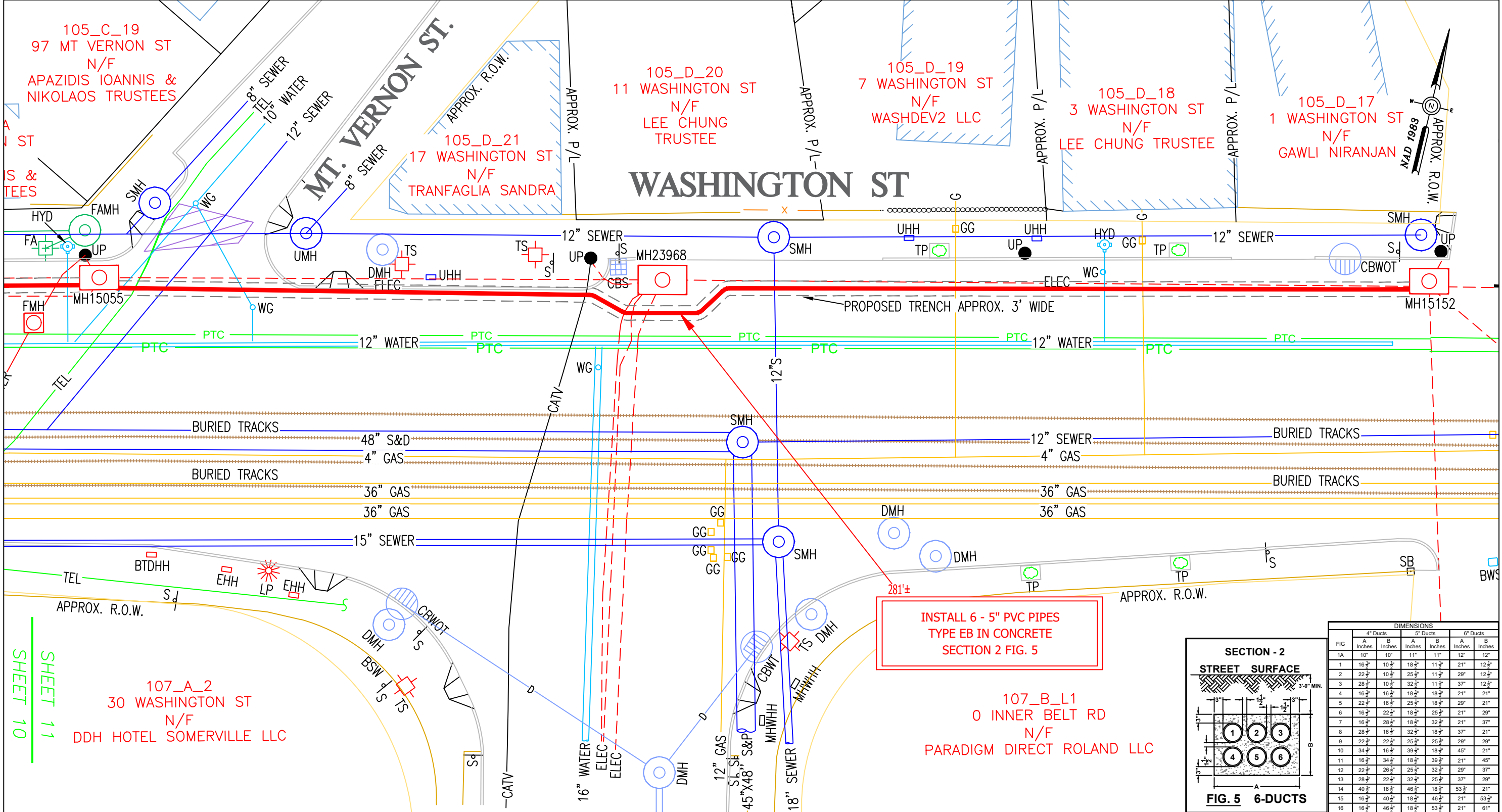
**NOTES:**  
DURING CONSTRUCTION, IF ANY OF THE DRAINAGE PIPES AT UTILITY CROSSING ARE DAMAGED, PROJECTS SECTION IS REQUESTING THAT DRAIN PIPES BE REPLACED FROM STRUCTURED TO STRUCTURE.

BY YOUR USE OF THE INFORMATION CONTAINED IN THIS MAP, YOU AGREE THAT NO WARRANTY OF ANY KIND, EXPRESS OR IMPLIED, IS GIVEN WITH RESPECT TO THE INFORMATION. NEITHER NSTAR ELECTRIC COMPANY, NSTAR GAS COMPANY NOR ITS PARENTS, AFFILIATES, OFFICERS, DIRECTORS, SHAREHOLDERS, EMPLOYEES OR AGENTS (COLLECTIVELY THE "NSTAR ENTITIES") SHALL BE LIABLE FOR ANY LOSS OR INJURY CAUSED IN WHOLE OR IN PART BY USE OF THIS INFORMATION, OR IN RELIANCE UPON IT, TO THE MAXIMUM EXTENT ALLOWED BY LAW, YOU AGREE BY YOUR ACCEPTANCE OF THE INFORMATION TO RELEASE, INDEMNIFY AND HOLD THE NSTAR ENTITIES HARMLESS FROM ANY SUCH LOSS OR INJURY.

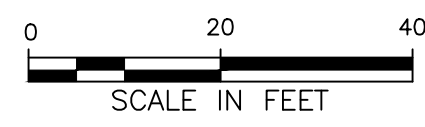
THE INFORMATION MAY NOT REPRESENT A SURVEY, MAY NOT BE THE MOST COMPLETE AND IS SUBJECT TO CHANGE WITHOUT NOTICE. NO LIABILITY IS ASSUMED FOR THE ACCURACY OF THE INFORMATION, EITHER EXPRESSED OR IMPLIED. UNAUTHORIZED ATTEMPTS TO MODIFY THE INFORMATION OR USE THE INFORMATION FOR OTHER THAN ITS INTENDED PURPOSES ARE PROHIBITED.

**MASS. LAW**  
REQUIRES 72 HOURS ADVANCE NOTICE TO UTILITY COMPANIES BEFORE DIGGING BY ANYONE. CALL DIG-SAFE 1-888-344-7233

C#	313-22	<b>NSTAR EVERSOURCE</b> ELECTRIC d/b/a 1165 MASSACHUSETTS AVE. DORCHESTER, MASS. 02125
Ward #		
Work Order #	10826148	Plan of WASHINGTON STREET SOMERVILLE
Surveyed by:	BP/GC	Showing PROPOSED CONDUIT LOCATION
Research by:	GR	
Plotted by:	GR	
Proposed Structures:	GR	
Approved:	T THIBAUT	Scale 1"=20'
P#		Date NOVEMBER 28, 2022
		SHEET 10 of 11
		REV: MAY 30, 2024



**WARNING**  
**PIPE TYPE CABLE**  
**IN THIS AREA**



**NOTES:**  
 DURING CONSTRUCTION, IF ANY OF THE DRAINAGE PIPES AT UTILITY CROSSING ARE DAMAGED, PROJECTS SECTION IS REQUESTING THAT DRAIN PIPES BE REPLACED FROM STRUCTURED TO STRUCTURE.

BY YOUR USE OF THE INFORMATION CONTAINED IN THIS MAP, YOU AGREE THAT NO WARRANTY OF ANY KIND, EXPRESS OR IMPLIED, IS GIVEN WITH RESPECT TO THE INFORMATION. NEITHER NSTAR ELECTRIC COMPANY, NSTAR GAS COMPANY NOR ITS PARENTS, AFFILIATES, OFFICERS, DIRECTORS, SHAREHOLDERS, EMPLOYEES OR AGENTS (COLLECTIVELY THE "NSTAR ENTITIES") SHALL BE LIABLE FOR ANY LOSS OR INJURY CAUSED IN WHOLE OR IN PART BY USE OF THIS INFORMATION, OR IN RELIANCE UPON IT, TO THE MAXIMUM EXTENT ALLOWED BY LAW. YOU AGREE BY YOUR ACCEPTANCE OF THE INFORMATION TO RELEASE, INDEMNIFY AND HOLD THE NSTAR ENTITIES HARMLESS FROM ANY SUCH LOSS OR INJURY.

THE INFORMATION MAY NOT REPRESENT A SURVEY, MAY NOT BE THE MOST COMPLETE AND IS SUBJECT TO CHANGE WITHOUT NOTICE. NO LIABILITY IS ASSUMED FOR THE ACCURACY OF THE INFORMATION, EITHER EXPRESSED OR IMPLIED. UNAUTHORIZED ATTEMPTS TO MODIFY THE INFORMATION OR USE THE INFORMATION FOR OTHER THAN ITS INTENDED PURPOSES ARE PROHIBITED.

**MASS. LAW**  
 REQUIRES 72 HOURS ADVANCE NOTICE TO UTILITY COMPANIES BEFORE DIGGING BY ANYONE. CALL DIG-SAFE 1-888-344-7233

**INSTALL 6 - 5" PVC PIPES  
 TYPE EB IN CONCRETE  
 SECTION 2 FIG. 5**

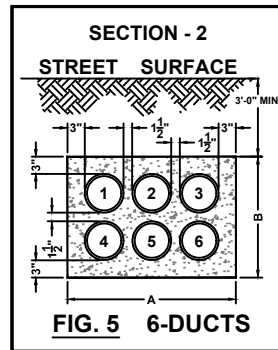


FIG	4" Ducts		5" Ducts		6" Ducts	
	A Inches	B Inches	A Inches	B Inches	A Inches	B Inches
1A	10"	10"	11"	11"	12"	12"
1	16 1/2"	10 1/2"	18 1/2"	11 1/2"	21"	12 1/2"
2	22 1/2"	10 1/2"	25 1/2"	11 1/2"	29"	12 1/2"
3	28 1/2"	10 1/2"	32 1/2"	11 1/2"	37"	12 1/2"
4	16 1/2"	16 1/2"	18 1/2"	18 1/2"	21"	21"
5	22 1/2"	16 1/2"	25 1/2"	18 1/2"	29"	21"
6	16 1/2"	22 1/2"	18 1/2"	25 1/2"	21"	29"
7	16 1/2"	28 1/2"	18 1/2"	32 1/2"	21"	37"
8	28 1/2"	16 1/2"	32 1/2"	18 1/2"	37"	21"
9	22 1/2"	22 1/2"	25 1/2"	25 1/2"	29"	29"
10	34 1/2"	16 1/2"	39 1/2"	18 1/2"	45"	21"
11	16 1/2"	34 1/2"	18 1/2"	39 1/2"	21"	45"
12	22 1/2"	28 1/2"	25 1/2"	32 1/2"	29"	37"
13	28 1/2"	22 1/2"	32 1/2"	25 1/2"	37"	29"
14	40 1/2"	16 1/2"	46 1/2"	18 1/2"	53 1/2"	21"
15	16 1/2"	40 1/2"	18 1/2"	46 1/2"	21"	53 1/2"
16	16 1/2"	46 1/2"	18 1/2"	53 1/2"	21"	61"

C# 313-22  
 Ward #  
 Work Order # 10826148  
 Surveyed by: BP/GC  
 Research by: GR  
 Plotted by: GR  
 Proposed Structures: GR  
 Approved: T THIBAUT  
 P#

**NSTAR EVERSOURCE**  
 ELECTRIC  
 d/b/a  
 1165 MASSACHUSETTS AVE. DORCHESTER, MASS. 02125

Plan of WASHINGTON STREET  
 SOMERVILLE  
 Showing PROPOSED CONDUIT LOCATION

Scale 1"=20'  
 SHEET 11 of 11

Date NOVEMBER 28, 2022  
 REV: MAY 30, 2024

365 MCGRATH HIGHWAY LLC  
311 SOMERVILLE AVE  
SOMERVILLE, MA 02143

40 JOY ST LLC  
305 CAMBRIDGE ST SUITE 3  
CAMBRIDGE, MA 02141

40 JOY STREET LLC  
40 JOY STREET  
SOMERVILLE, MA 02143

40 JOY STREET LLC  
40 JOY ST  
SOMERVILLE, MA 02145

75 WASHINGTON COMMERCIAL SPACE  
LLC  
93 BROADWAY  
SOMERVILLE, MA 02145

ACHARYA MANOJ & SANCHITA  
1 WASHINGTON AVE  
SOMERVILLE, MA 02143

APAZIDIS IOANNIS & NIKOLAOS  
TRUSTEES  
14 SMITH ROAD  
RANDOLPH, MA 02368

APAZIDIS IOANNIS & NIKOLAOS  
TRUSTEES  
14 SMITH ROAD  
RANDOLPH, MA 02368

AREC 8 LLC  
2727 NORTH CENTRAL AVE  
PHOENIX, AZ 85004 usa

AUGUSTIN CLAUDE  
PO BOX 2  
SOMERVILLE, MA 02143 USA

BAIROS NICOLE  
113 WASHINGTON ST  
SOMERVILLE, MA 02143 USA

CATALDO AMBULANCE SVC INC  
137 WASHINGTON ST  
SOMERVILLE, MA 02143 USA

CATALDO REALTY TRUST  
137 WASHINGTON ST  
SOMERVILLE, MA 02143 USA

CCC FOUR JOY LLC  
PO BOX 435 137 WASHINGTON ST  
SOMERVILLE, MA 02143 USA

CENTEIO MANUEL & GABRIELA FOR LIFE  
13 MYRTLE ST  
SOMERVILLE, MA 02145

CHANG ANNIE & MORADI SHAHRAM  
ASHTON  
75 WASHINGTON ST #12B  
SOMERVILLE, MA 02143

CHEN YINGNAN P.  
105 WASHINGTON ST #3B  
SOMERVILLE, MA 02143

CHOW ALBERT F  
9 MYRTLE ST #8  
SOMERVILLE, MA 02145 USA

CITY OF SOMERVILLE  
93 HIGHLAND AVE  
SOMERVILLE, MA 02143 USA

CITY OF SOMERVILLE  
93 HIGHLAND AVE  
SOMERVILLE, MA 02143

CLOVER LEAF CAPITAL HOLDINGS LLC  
105 WASHINGTON ST UNIT C1  
SOMERVILLE, MA 02143

COBBLE HILL CENTER LLC  
150 MOUNT VERNON ST-BAYSIDE500  
BOSTON, MA 02125

COMPOS AVANI  
PO BOX 423  
SOMERVILLE, MA 02143 USA

DDH HOTEL SOMERVILLE LLC  
319 SPEEN ST  
NATICK, MA 01760-1506 USA

ESTABROOK MARGARET & JAMES R  
17 WATERHOUSE ST  
SOMERVILLE, MA 02144 USA

FU HONG HAO  
105 WASHINGTON ST #2A  
SOMERVILLE, MA 02143

GAWLI NIRANJAN  
1 WASHINGTON ST  
SOMERVILLE, MA 02143

GILL KULWANT S & PATEL FALGUN  
3 SCHIAPPA CIR  
STONEHAM, MA 02180 USA

GOU FSNGNISNG & ARIPIRALA SRINIVAS  
75 WASHINGTON ST #14  
SOMERVILLE, MA 02143

HOLMES ROBERT & BARRETT KENNETH  
16 B FULLER LANE  
BOXFORD, MA 01921

HSBC BANK USA  
1661 WORTHINGTON RD STE 100  
WEST PALM BEACH, FL 33409

INTERNATIONAL CHURCH OF GRACE OF  
GOD INC  
1261 EAST SAMPLE RD  
POMPANO BEACH, FL 33064

ITS REALTY LLC  
87 BAKER ST  
BELMONT, MA 02478 USA

JSADB5 LLC  
25 WASHINGTON ST  
SOMERVILLE, MA 02143

KEAMY ERIC  
PO BOX 181646  
CORONADO, CA 92178 USA

KILDUFF MICHELLE A TRUSTEE  
15 SUNSET ROAD  
SOMERVILLE, MA 02143 USA

KOCHARIAN NAIRA  
105 WASHINGTON ST UNIT 3C  
SOMERVILLE, MA 02143

KOHN RICHARD TRUSTEE  
PO BOX 665  
WINCHESTER, MA 01890

LAMSA ERIC N. & VALERIE W.  
75 WASHINGTON ST #10  
SOMERVILLE, MA 02143

LEE CHUNG TRUSTEE  
33 THIRD ST  
MEDFORD, MA 02155 USA

LEE CHUNG TRUSTEE  
33 THIRD ST  
MEDFORD, MA 02155 USA

LOUE FONG HING  
17 MYRTLE ST. UNIT 4  
SOMERVILLE, MA 02145 USA

LOUINE WISLENE  
367 MCGRATH HWY  
SOMERVILLE, MA 02143

MA MAN SAU & MA HA SAU  
3 MYRTLE ST UNIT-11  
SOMERVILLE, MA 02145 USA

MALLARD SQUARE LLC  
105 WASHINGTON ST UNIT C1  
SOMERVILLE, MA 02143

MALLARD SQUARE LLC  
105 WASHINGTON ST UNIT C1  
SOMERVILLE, MA 02143

MANGALNI RAMESH & JANKI & HEENA  
105 WASHINGTON ST #2B  
SOMERVILLE, MA 02143

MANICKASINGHAM INDRAJIT  
1580 MASSACHUSETTS AVE #4-C  
CAMBRIDGE, MA 02138

MAURICE ESTATES LLC  
80 COTTING ST  
MEDFORD, MA 02155

NG VINCENT W & SAMUEL S K &  
HOWARD H  
70 CHESTNUT ST UNIT 3  
BROOKLINE, MA 02445

PARADIGM DIRECT ROLAND LLC  
93 SUMMER ST - 2ND FL  
BOSTON, MA 02110

PARK YOUNG SOOK  
P.O. BOX 610  
SOMERVILLE, MA 02143

PORAT OHAD & NURICK DANIELLE  
NAAMA &  
75 WASHINGTON ST #12A  
SOMERVILLE, MA 02143

PREVITE JOSEPH D & ANTHONY D TRS  
680 SOMERVILLE AVE  
SOMERVILLE, MA 02143 USA

RAYMOND ELCIE  
3 WASHINGTON AVE  
SOMERVILLE, MA 02143 USA

ROMANOW ROBERT TRUSTEE  
1010 MEMORIAL DR #5F  
CAMBRIDGE, MA 02138 USA

SANTOS MARIA D & AGUINALDO  
81 WASHINGTON ST 1  
SOMERVILLE, MA 02143

SHERPA KAJI & PUSHPA  
7 MYRTLE ST UNIT 9  
SOMERVILLE, MA 02145 USA

SIDHU ROHINI  
21 MYRTLE ST  
SOMERVILLE, MA 02145

SOARES MARIA F  
79 WASHINGTON ST  
SOMERVILLE, MA 02143

SUMIDO PORTIA M  
15 MYRTLE ST #5  
SOMERVILLE, MA 02145 USA

TENZING PEMA  
23 MYRTLE ST #1  
SOMERVILLE, MA 02145 USA

TRANFAGLIA SANDRA &  
347 HILLSIDE RD  
NORTH ANDOVER, MA 01845 USA

TRINGALE FRANK A JR  
3 CONNORS DR  
WOBURN, MA 01801 USA

TRUST THE GENNARO NOMINEE  
91 WASHINGTON ST  
SOMERVILLE, MA 02143 USA

TUAN QUOC TRUONG  
1 MYRTLE ST UNIT 12  
SOMERVILLE, MA 02143 USA

UNIFIRST CORPORATION  
68 JONSPIN RD  
WILMINGTON, MA 01887 USA

VAN GYSEL CHRISTOPHE JACKY H.  
105 WASHINGTON ST #4A  
SOMERVILLE, MA 02143

VP COMMERCIAL HOLDINGS LLC  
105 WASHINGTON ST RETAIL  
SOMERVILLE, MA 02143

WASHDEV2 LLC  
2 LINCOLN ST  
SOMERVILLE, MA 02145

WILLISSON ERIC  
83 WASHINGTON ST#2  
SOMERVILLE, MA 02143

WOODEN TEETH LLC  
17 VILLAGE ST UNIT 1  
SOMERVILLE, MA 02143