



**CITY OF SOMERVILLE**  
Commonwealth of Massachusetts  
93 Highland Avenue  
Somerville, MA 02143  
(617) 625-6600

## **BUSINESS LICENSE APPLICATION - Small Wireless Facility**

File #: 21-012721

License #: BL21-000118

Address: 220 WASHINGTON ST

Licensee: Matthew Pricco Network Building + Consulting

DBA Name: Extenet Systems, Inc.

Business Ownership Type: Corporation

Legal Name of Entity: Extenet Systems, Inc.

Owners/Officers: James A. Hyde, Anthony Lehv, Daniel L. Timm,

### **License Information:**

**Do you believe this to be a 6409(a) application?:** No

**Describe the reason for the work, and the intended beneficiaries:** Small Cell Wireless Facility-attachment to an existing utility pole

**Provide the detailed description of the work that should appear on the License:** A small cell wireless facility, along with all required equipment and fiber for its operation, to an existing utility pole in the right-of-way located on 220 Washington Street, with an electricity connection (Pole Number: 107/32). Location approximately as shown on attached construction plans.

**# of installations on existing poles:** 1

**# of installations on new poles:** 0

**Provide the legal name of the entity that will own the License:** Extenet Systems, Inc.

Approval Conditions:

### **Approved By:**

**John Power, Approved**

**Isabela Maia, Approved**

**Hans Jensen, Approved**

**Malik Drayton, Approved with Conditions**

APPROVAL CONDITION: MD20210922: Contractor shall take all necessary precautions to avoid damaging any tree or tree part with equipment.

APPROVAL CONDITION: MD20210922: All nearby street tree(s) shall be protected prior to and during all construction activities using TREE BOX or TREE WRAPS. . TREE BOX shall be constructed from 2 in. x 4 in. lumber creating a box around the border of the tree pit with 2 in. x 4 in. lumber standing straight up at the corners and wrapped with orange snow fence. Detail attached. . TREE WRAPS (TREE TRUNK WRAPPING PROTECTION LUMBER) shall consist of 2 in. x 4 in. and 8 ft. height lumber wired together in close spacing

with zip ties or 16 gauge galvanized steel wire to form a protective enclosure around tree trunks. Use burlap to separate the wood from the bark if necessary to prevent wood from scraping or bruising bark. Do not use staples or puncture the trunk in any way.

APPROVAL CONDITION: MD20210922: Any tree roots less than two (2) inches in diameter that cannot be avoided during construction shall be carefully and cleanly cut with a clean pair of pruning shears or loppers. Roots are to be cut back flush with the edge of the trench. If any tree roots greater than two (2) inches in diameter are encountered, stop work immediately and contact the City Urban Forester. Any and all pruning of roots greater than 2 inches in diameter must be completed under the supervision of the City Urban Forester.

**Eric Weisman, Approved**

**Kimberly M. Wells, Approved**

LATITUDE: 42.3794025°  
LONGITUDE: -71.0924437°



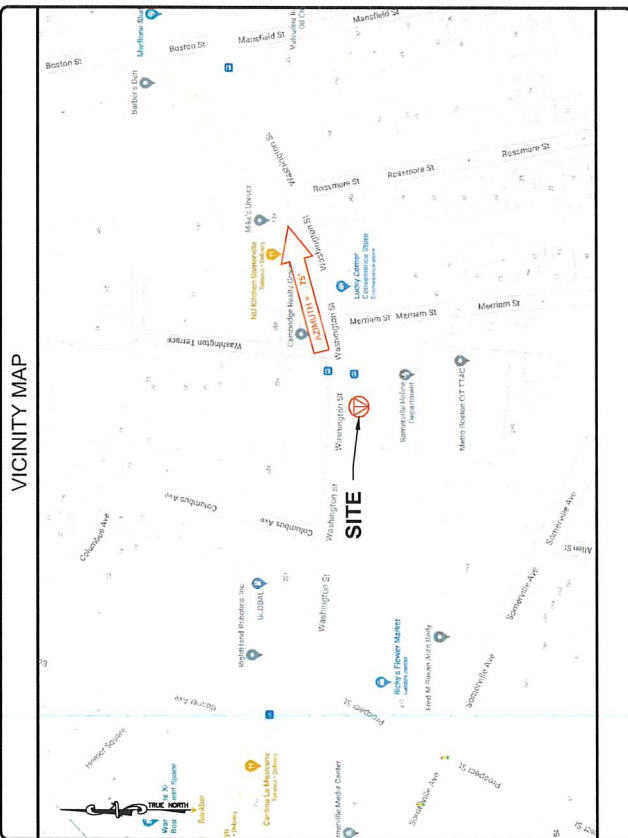
# NE-MA-BSTN3N01-TMO NE-MA-BSTN3N01-03411 / NE3209BA\_31LAB

**PROPOSED SMALL CELL NODE**  
220 WASHINGTON STREET, SOMERVILLE, MA 02143  
CITY OF SOMERVILLE, MIDDLESEX COUNTY

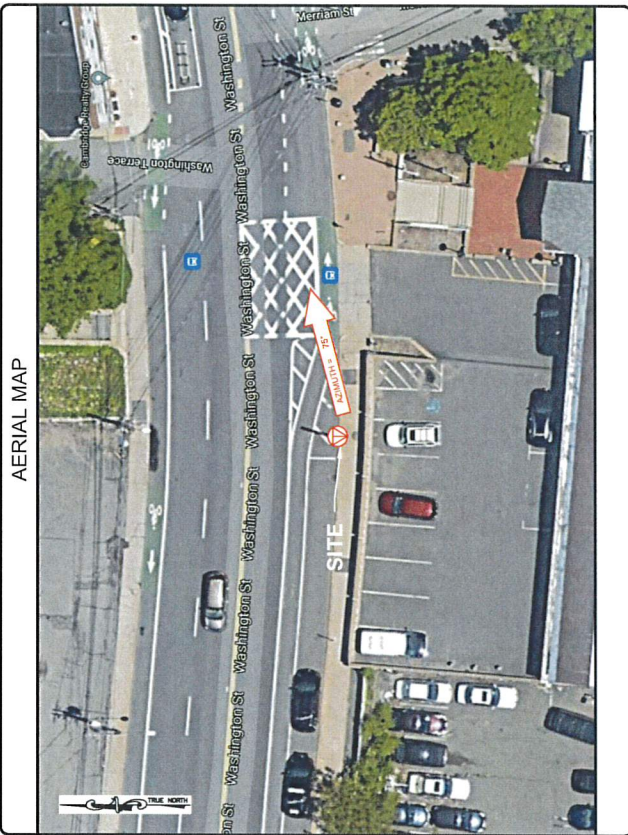


Know what's below.  
Call before you dig.

VICINITY MAP



AERIAL MAP



### PROJECT INFORMATION

PROJECT NAME: NE-MA-BSTN3N01-TMO  
POLE TAG: 42.3794025° / -71.0924437°  
JURISDICTION: CITY OF SOMERVILLE, MIDDLESEX COUNTY  
EXTENET PROJECT MANAGER: ADAM DORR, 220 WASHINGTON ST, SUITE 340, SOMERVILLE, MA 02143, USA  
HUB LOCATION: HUB-48503944, 220 WASHINGTON STREET, SOMERVILLE, MA 02143  
ELECTRIC COMPANY: EVERSOURCE

### CODE COMPLIANCE

ALL WORK AND MATERIALS SHALL BE PERFORMED AND INSTALLED IN ACCORDANCE WITH THE CURRENT EDITIONS OF THE FOLLOWING CODES AS ADOPTED BY THE LOCAL GOVERNING AUTHORITIES. NOTHING IN THESE PLANS IS TO BE CONSTRUED TO PERMIT WORK NOT CONFORMING TO THE LATEST EDITIONS OF THE FOLLOWING CODES.

- 2015 INTERNATIONAL BUILDING CODE (MASSACHUSETTS AMENDED 9TH EDITION)
- 2017 NATIONAL ELECTRICAL CODE
- NFPA 1-2015 EDITION
- 2015 IFC - REFERENCE 627 CHR
- AMERICAN CONCRETE INSTITUTE
- AMERICAN INSTITUTE OF STEEL CONSTRUCTION
- MANUAL OF STEEL CONSTRUCTION 13TH EDITION
- ANSI/J11A-222-G
- TIA 607
- INSTITUTE FOR ELECTRICAL & ELECTRONICS ENGINEER 81
- IEEE C2 NATIONAL ELECTRIC SAFETY CODE LATEST EDITION
- TELECORDIA GR-1275
- ANSIF 311

### DRAWING INDEX

01	TITLE SHEET
02	NOTES
03	ELEVATION
04	ANTENNA & EQUIPMENT DETAILS
05	ELECTRICAL & GROUNDING DETAILS

### REVISIONS

REV	DATE	DESCRIPTION	BY
1	12/09/11	EQUIPMENT HEIGHT REVIEWED	DR
9	08/27/21	PRELIMINARY	NMM

### REVISIONS

REV	DATE	DESCRIPTION	BY
1	12/09/11	EQUIPMENT HEIGHT REVIEWED	DR
9	08/27/21	PRELIMINARY	NMM

### REVISIONS

REV	DATE	DESCRIPTION	BY
1	12/09/11	EQUIPMENT HEIGHT REVIEWED	DR
9	08/27/21	PRELIMINARY	NMM

### REVISIONS

REV	DATE	DESCRIPTION	BY
1	12/09/11	EQUIPMENT HEIGHT REVIEWED	DR
9	08/27/21	PRELIMINARY	NMM



APPLICANT: extenei  
308 WASHINGTON ROAD, SUITE 340  
LISLE, IL 60532  
(630) 955-3800

SITE INFORMATION: NE-MA-BSTN3N01-03411  
TMO ID: NE3209BA\_31LAB  
220 WASHINGTON STREET  
SOMERVILLE, MA 02143  
MIDDLESEX COUNTY

### REVISIONS

REV	DATE	DESCRIPTION	BY
1	12/09/11	EQUIPMENT HEIGHT REVIEWED	DR
9	08/27/21	PRELIMINARY	NMM

### REVISIONS

REV	DATE	DESCRIPTION	BY
1	12/09/11	EQUIPMENT HEIGHT REVIEWED	DR
9	08/27/21	PRELIMINARY	NMM

### REVISIONS

REV	DATE	DESCRIPTION	BY
1	12/09/11	EQUIPMENT HEIGHT REVIEWED	DR
9	08/27/21	PRELIMINARY	NMM

### REVISIONS

REV	DATE	DESCRIPTION	BY
1	12/09/11	EQUIPMENT HEIGHT REVIEWED	DR
9	08/27/21	PRELIMINARY	NMM

### REVISIONS

REV	DATE	DESCRIPTION	BY
1	12/09/11	EQUIPMENT HEIGHT REVIEWED	DR
9	08/27/21	PRELIMINARY	NMM

### REVISIONS

REV	DATE	DESCRIPTION	BY
1	12/09/11	EQUIPMENT HEIGHT REVIEWED	DR
9	08/27/21	PRELIMINARY	NMM

### REVISIONS

REV	DATE	DESCRIPTION	BY
1	12/09/11	EQUIPMENT HEIGHT REVIEWED	DR
9	08/27/21	PRELIMINARY	NMM

### REVISIONS

REV	DATE	DESCRIPTION	BY
1	12/09/11	EQUIPMENT HEIGHT REVIEWED	DR
9	08/27/21	PRELIMINARY	NMM

### REVISIONS

REV	DATE	DESCRIPTION	BY
1	12/09/11	EQUIPMENT HEIGHT REVIEWED	DR
9	08/27/21	PRELIMINARY	NMM

### REVISIONS

REV	DATE	DESCRIPTION	BY
1	12/09/11	EQUIPMENT HEIGHT REVIEWED	DR
9	08/27/21	PRELIMINARY	NMM

### REVISIONS

REV	DATE	DESCRIPTION	BY
1	12/09/11	EQUIPMENT HEIGHT REVIEWED	DR
9	08/27/21	PRELIMINARY	NMM

ENGINEERING FIRM

APPLICANT

SITE INFORMATION

DESIGN RECORD

PROFESSIONAL STAMP

ENGINEER

SHEET TITLE

SHEET NUMBER

ENGINEER: KRUPAKARAN KOLANDAVELU, P.E.  
MA PROFESSIONAL ENGINEER LIC. #50019

TITLE SHEET

01 OF 05







NE-MA-BSTN3N01-03411  
TMO ID: NE3209BA\_31LAB  
220 WASHINGTON STREET  
SOMERVILLE, MA 02143  
MIDDLESEX COUNTY

REVISIONS			
NO.	DATE	DESCRIPTION	BY
1	12/05/21	EQUIPMENT HEIGHT REVIEWED	DPR
2	04/27/21	PRELIMINARY	NAM

DESIGN RECORD

PROFESSIONAL STAMP

ENGINEER  
KRUPAKARAN KOLANDAVELU, P.E.  
MA PROFESSIONAL ENGINEER LIC. #56019

SHEET NUMBER  
**03 OF 05**

ENGINEERING FIRM

APPLICANT

SITE INFORMATION

DESIGN RECORD

PROFESSIONAL STAMP

ENGINEER

SHEET TITLE

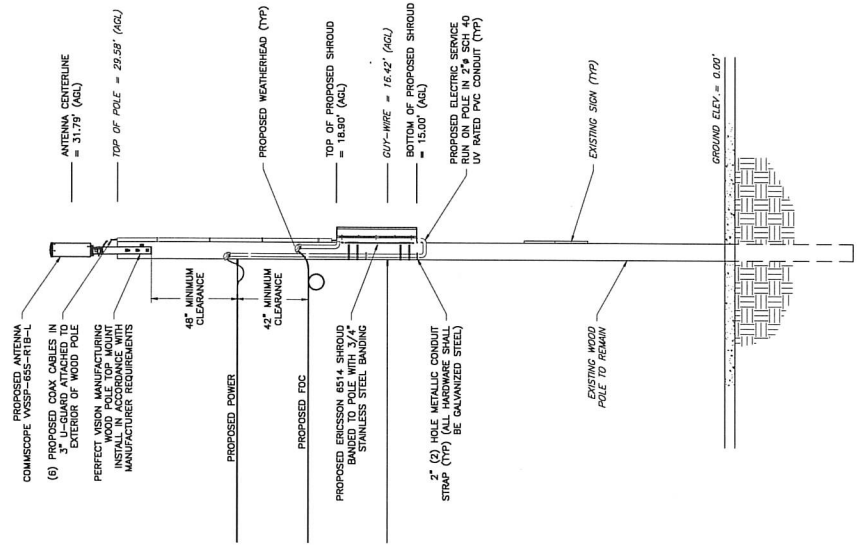
SHEET NUMBER



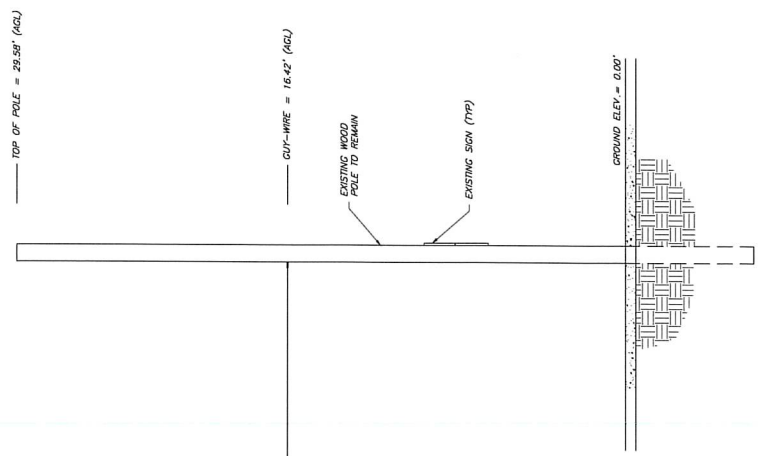
EXISTING CONDITIONS

- NOTES:**
- EQUIPMENT ELEVATION IS SUBJECT TO MAKE READY PERFORMED BY POLE OWNER.
  - NEW PLOTTING SHALL BE DONE CONFORMANT AND VERIFY THE FOLLOWING INFORMATION: TRANSMITTING SYSTEM EQUIPMENT, WALKER & PROPRIETARY INFORMATION. INSTALL FEET UTILITY COMPANY REQUIREMENTS AND VERIFY EXACT MOUNTING HEIGHT IN FIELD.
  - MAINTAIN MINIMUM OF 8'-0" FROM GROUND LEVEL TO BOTTOM OF PROPOSED SHROUD.
  - MAINTAIN MINIMUM OF 42" FROM TOP COMMUNICATION ATTACHMENT TO BOTTOM SECONDARY POWER ATTACHMENT.
  - MAINTAIN MINIMUM OF 48" CLEARANCE IN ANY DIRECTION FROM ANTENNA AND MOUNTING BRACKET TO NEAREST SECONDARY POWER CONNECTION.
  - MAINTAIN MINIMUM OF 12" FROM TOP COMMUNICATIONS LINE TO ANY ADDITIONAL COMMUNICATIONS LINE.
  - MAINTAIN MINIMUM OF 5' FROM GROUND LEVEL TO METER LOCATION.
  - MAINTAIN MINIMUM OF 6" CLEARANCE IN ANY DIRECTION FROM ANTENNA AND MOUNTING BRACKET TO NEAREST PRIMARY POWER CONNECTION.
  - EQUIPMENT TO BE INSTALLED ON OPPOSITE SIDE OF TRAFFIC FLOW.
  - POWER SUPPLY & WEATHERHEAD SHOULD BE INSTALLED ON THE SAME SIDE OF THE POLE WITH THE SECONDARY(S) AND COMMUNICATION CABLE(S) TO ACCOMMODATE CLIMBING OF THE POLE.

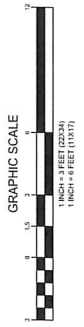
ATTACHMENT HEIGHTS, ANTENNA AND EQUIPMENT LOCATIONS  
PENDING MAKE-READY AND STRUCTURAL ANALYSIS



PROPOSED ELEVATION (LOOKING SOUTH)



EXISTING ELEVATION (LOOKING SOUTH)





REV	DATE	DESCRIPTION	BY
1	12/20/21	EQUIPMENT HEIGHT REVISED	EPB
0	08/27/21	PRELIMINARY	AMM

DESIGN RECORD

PROFESSIONAL STAMP

ENGINEER  
VISHU RAMAN/KUMAR/ELU, P.E.  
MA PROFESSIONAL ENGINEER, LIC. #20819

SHEET TITLE  
**ANTENNA & EQUIPMENT DETAILS**

SHEET NUMBER  
**04 OF 05**

ENGINEERING FIRM

APPLICANT

SITE INFORMATION

DESIGN RECORD

PROFESSIONAL STAMP

ENGINEER

SHEET TITLE

SHEET NUMBER

APPLICANT

SITE INFORMATION

DESIGN RECORD

PROFESSIONAL STAMP

ENGINEER

SHEET TITLE

SHEET NUMBER

APPLICANT

SITE INFORMATION

DESIGN RECORD

PROFESSIONAL STAMP

ENGINEER

SHEET TITLE

SHEET NUMBER

APPLICANT

SITE INFORMATION

DESIGN RECORD

PROFESSIONAL STAMP

ENGINEER

SHEET TITLE

SHEET NUMBER

APPLICANT

SITE INFORMATION

DESIGN RECORD

PROFESSIONAL STAMP

ENGINEER

SHEET TITLE

SHEET NUMBER

APPLICANT

SITE INFORMATION

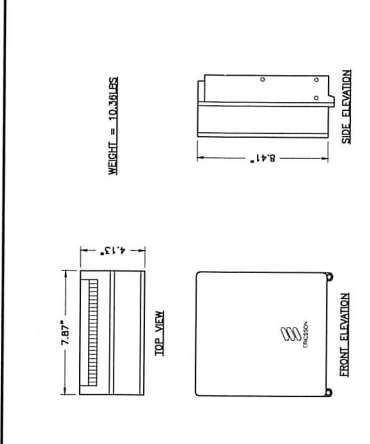
DESIGN RECORD

PROFESSIONAL STAMP

ENGINEER

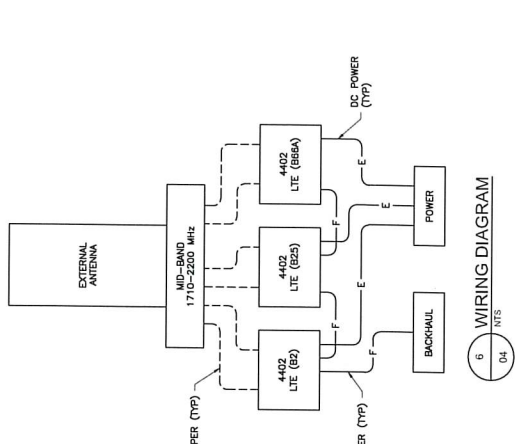
SHEET TITLE

SHEET NUMBER

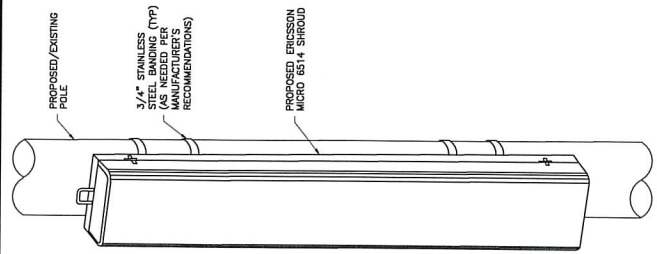


ERICSSON RADIO	
4402 B2/B25	AC: 100-250V NORMAL VOLTAGE RANGE AT RADIO INPUT CONNECTOR DC: -56 TO -58.5 NOMINAL VOLTAGE: -48V DC
4402 B86A	AC: 100-250V NORMAL VOLTAGE RANGE AT RADIO INPUT CONNECTOR DC: -56 TO -58.5 NOMINAL VOLTAGE: -48V DC

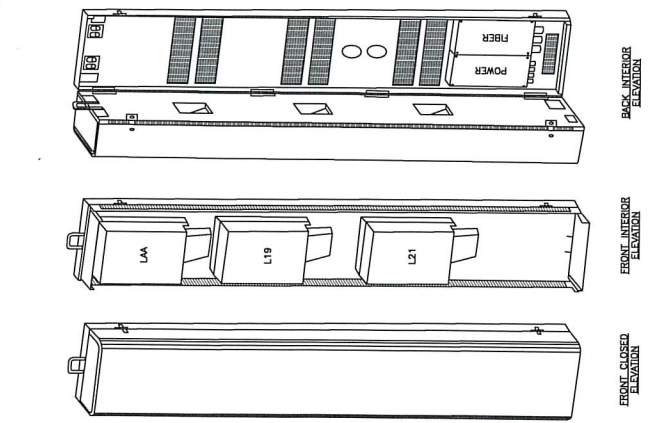
3 ERICSSON REMOTE RADIO UNIT (RRU)  
04 NTS



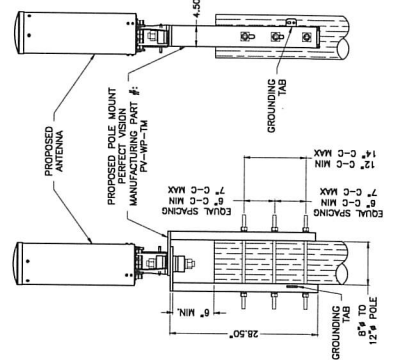
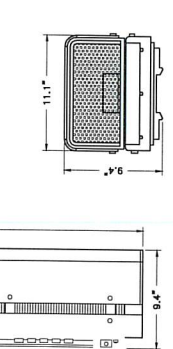
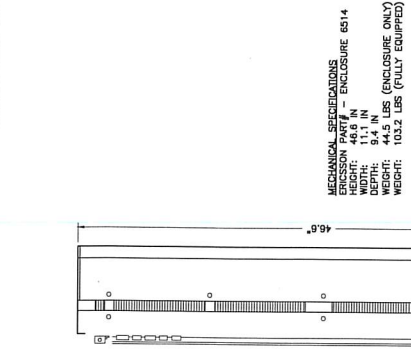
6 WIRING DIAGRAM  
04 NTS



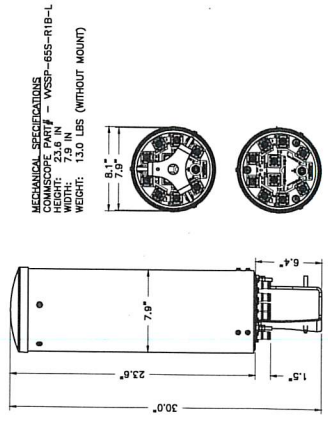
2 EQUIPMENT MOUNTING DETAIL  
04 NTS



1 ERICSSON MICRO 6514 SHROUD DETAIL  
04 NTS



5 ANTENNA MOUNT DETAIL  
04 NTS



4 ANTENNA DETAIL  
04 NTS

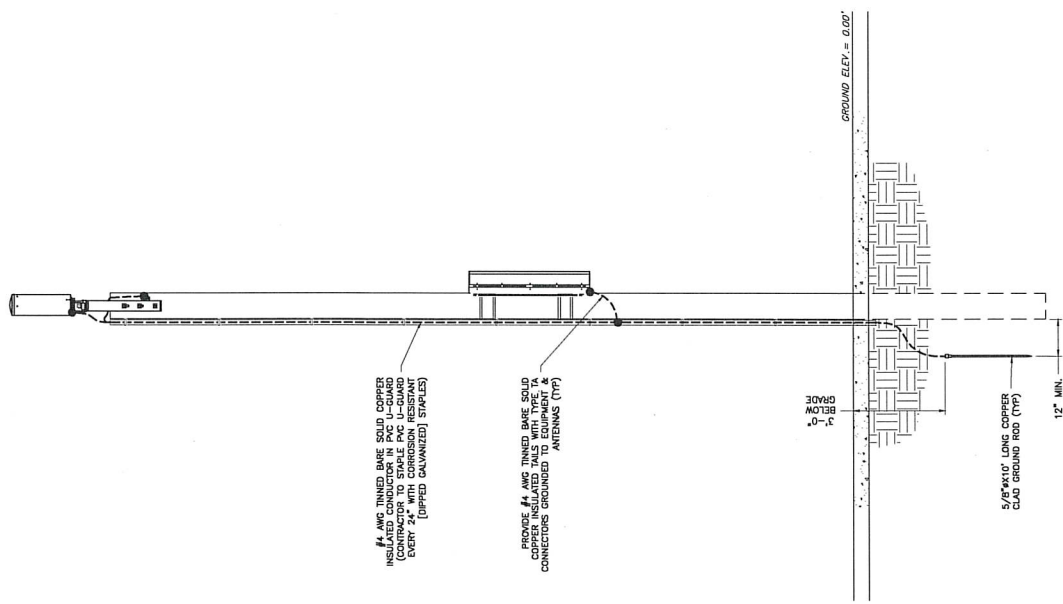
**MECHANICAL SPECIFICATIONS**  
ENCLOSURE # ENCLOSURE 6514  
HEIGHT: 46.6 IN  
WIDTH: 9.4 IN  
DEPTH: 9.4 IN  
WEIGHT: 44.5 LBS (ENCLOSURE ONLY)  
WEIGHT: 103.2 LBS (FULLY EQUIPPED)

**MECHANICAL SPECIFICATIONS**  
ENCLOSURE # WSSP-655-R18-L  
HEIGHT: 23.6 IN  
WIDTH: 7.9 IN  
WEIGHT: 13.0 LBS (WITHOUT MOUNT)

REVISIONS

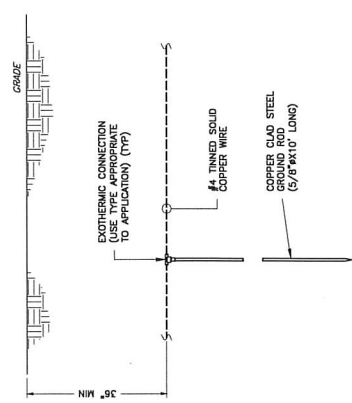
REV	DATE	DESCRIPTION	BY
1	12/29/21	EQUIPMENT HEIGHT REVISED	DPR
2	09/27/21	PRELIMINARY	NMM

**ELECTRICAL  
 & GROUNDING  
 DETAILS**

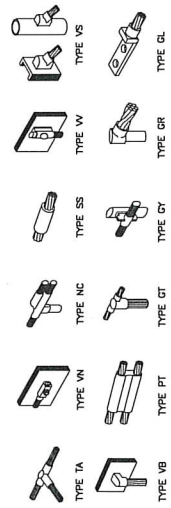


NOTE:  
 EXISTING/PROPOSED UTILITY WIRES, EQUIPMENT AND TERMINALS NOT SHOWN FOR CLARITY.

3 ELECTRICAL & GROUNDING RISER DIAGRAM  
 05 / NTS



1 TYPICAL GROUND ROD DETAIL  
 05 / NTS



2 GROUNDING CONNECTION DETAILS  
 05 / NTS