

Mayor Joe Curtatone, City of Somerville

David Lutes, Office of Sustainability & Environment

Somerville



2009



# Proposed Single Stream Recycling Pilot

August 25, 2010



---

# Outline of Presentation

- 1. Current Recycling Program – Design and Data**
  - 2. Single Stream Recycling – Definition and Results from Other Communities**
  - 3. Proposed Single Stream Pilot**
  - 4. Questions**
-

### 3. Current Recycling Program

- “**Dual Stream**” requires bottles and cans to be separated from paper and cardboard
- Bottles and cans are collected from blue recycling bins
- Paper must be put out on the curb in a paper bag
- Cardboard must be flattened, cut and tied into 2'x2' bundles and also placed on the curb





## 4. Current Recycling Program

- ***Bins, bags and bundles lead to messy streets and sidewalks***



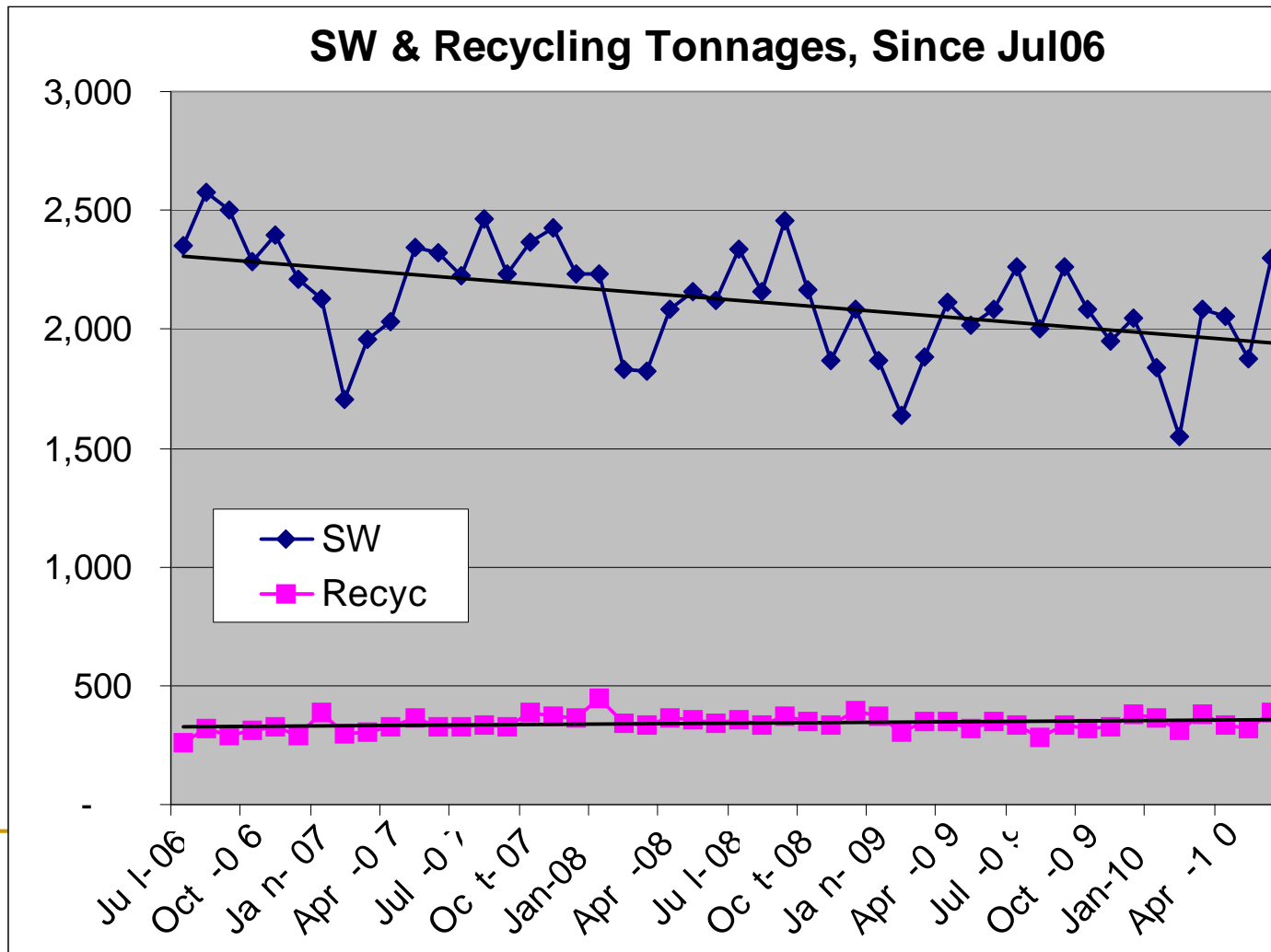
- ***Many households do not have blue bins and put recyclables in trash***





# 5. Current Trash & Recycling Tonnages

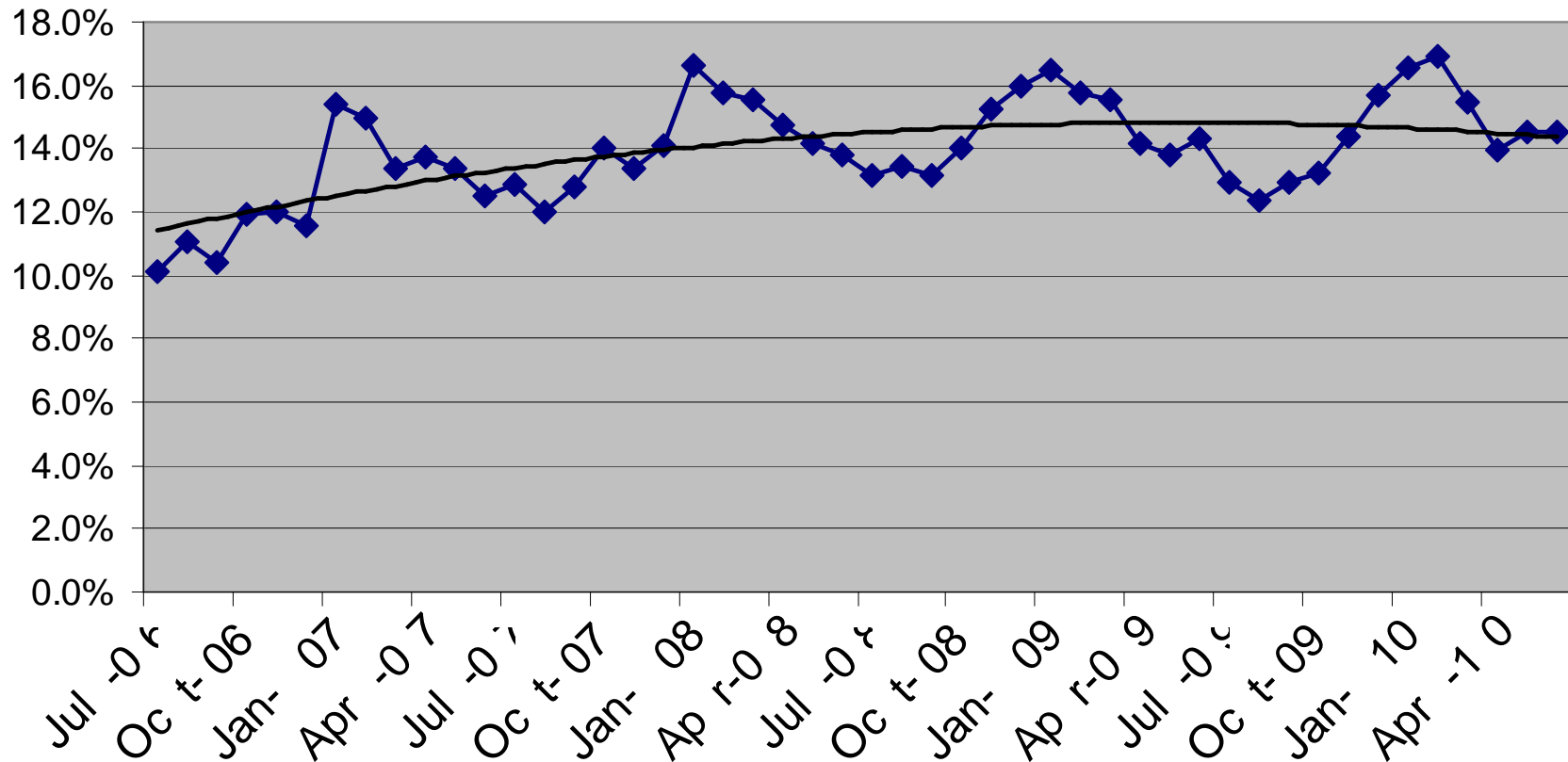
- Solid Waste tonnages have been declining since 2006
- Recycling tonnages have remained level



## 6. Current Recycling Rate

- The city's overall recycling rate has leveled off over the past two years at 14.5%

**Citywide Recycling Rate, Jul06 - Jun10**



## 7. Single Stream Recycling

“Single Stream” recycling allows residents to place all recyclable materials into one container, rather than having to sort plastics and metal separately from paper and cardboard (dual-stream)





---

## 8. Single Stream Benefits

- **Simplifies recycling for residents**
- **Increased recycling aligns with citywide environmental goal**
- **Cleaner streets and sidewalks**
- **Covered bins reduces stray materials**
- **Reduced trash collection costs**



## 9. Single Stream Recycling in Other MA Communities

### Currently Single Stream:

Arlington	Mendon
Ashland	Nahant
Barnstable	Natick
Billerica	Newton
Bourne	Norwood
Boston	Quincy, Weymouth and Braintree
Boxborough	Sharon
Burlington	Southbridge
Dedham	Springfield
Dighton	Tewksbury
Duxbury	Tyngsboro
Fitchburg	Wrentham
Framingham	
Gardner	
Holden	
Leominster	
Lunenburg	
Mansfield	

### Planning Single Stream:

Brookline  
Cambridge (rolling out citywide  
in Sep2010)  
Haverhill (pilot underway)  
Worcester (pilot underway)



## 10. Single Stream Results in Other Communities

### Single Stream Recycling Results from Other Cities

City	Type of Recycling	Increase in Recycling Tonnage
Boston	65-gal toter provided, semi-automated	35-88%
Springfield	65-gal toter provided, fully automated	50-100%
Hartford	65-gal toter provided, semi-automated	99%
Revere	65-gal toter provided, semi-automated	167% (pilot)
Newton	65-gal toter provided, fully automated	13%
Baltimore	42-gal. barrels provided by City	53%
Braintree-Quincy-Weymouth	Stickers on barrels, barrels not provided	12%

- Somerville can expect a significant increase in its recycling rate with Single Stream



---

## 11. Why Start with a Single Stream Pilot in Somerville?

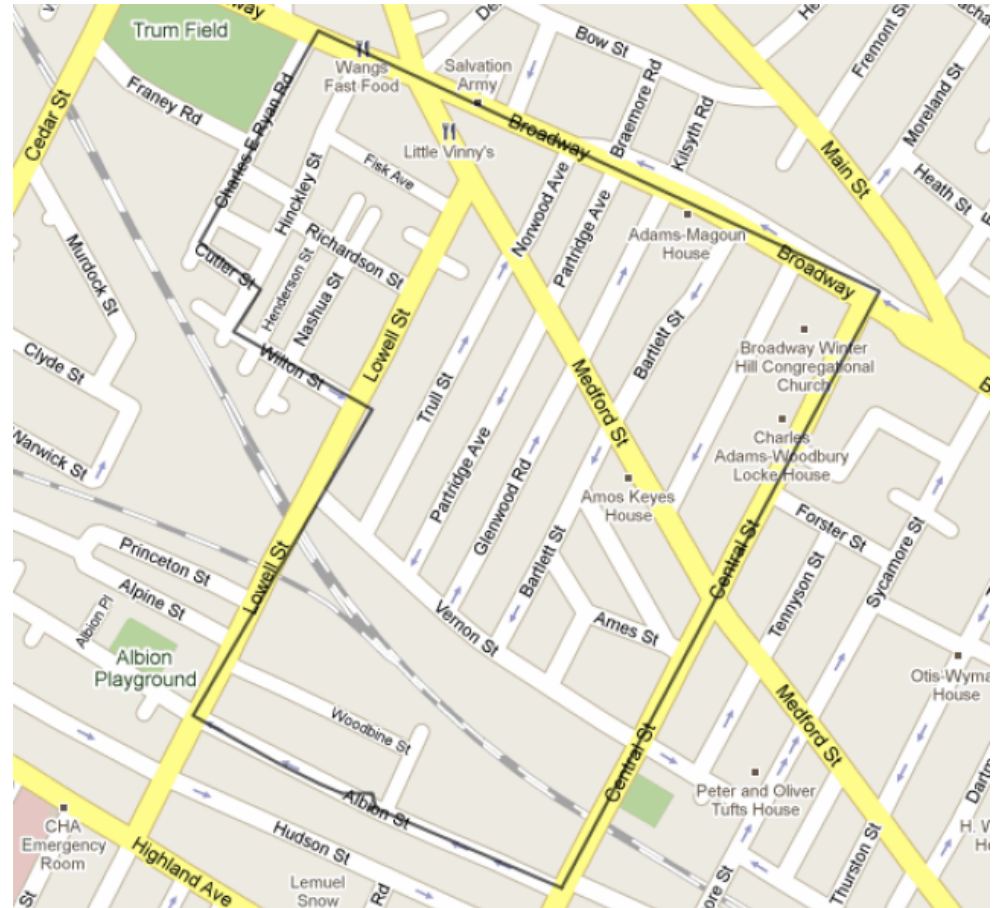
- n Proposed Single Stream pilot in one neighborhood will allow the City to:
    - q Use pilot data to:
      - n project impact on citywide recycling rate
      - n project long-term costs/savings due to increased recycling
    - q Assess utilization of carts by different household types
    - q Determine optimal route size with new carts and semi-automated lifts
    - q Assess communication and outreach needs for potential citywide rollout
-

# 12. Proposed Single Stream Pilot Area

- Proposed pilot area is one of Wednesday's truck routes - includes 1,317 households

**Single Stream Pilot Area Parcels**

Parcel Use Desc	# of Resident ial Units / Parcel	Total Parcels	Total Res Units
Single Family	1	247	247
Two Family	2	281	562
Three Family	3	116	348
Four Family	4	19	76
Five Family	5	6	30
Six Family	6	9	54
<b>Total</b>		<b>678</b>	<b>1,317</b>





- Represents average route for recycling citywide
- Will track recycling tonnage before and during pilot

# 13. Proposed Single Stream Pilot Timeline

- Proposed pilot launch date of Wednesday, Oct. 6<sup>th</sup>

Single Stream Pilot Schedule	Apr			May			Jun	Jul	Aug			Sep				Oct			Nov			Dec				
Task/Item	5	19	26	3	10	17	7	28	5	19	2	30	6	13	20	27	4	11	18	1	8	15	6	13	27	
Toter bid advertised		Completed																								
Print materials finalized				Completed																						
Toter bid opening				Completed																						
Toter contract awarded						Completed																				
First mailing (incl. flyer)											Projected															
Single Stream Pilot webpage											Projected															
Distribute door hangers												Projected														
Community Meeting #1													Projected													
Info video for cable wheel														Projected												
Community Meeting #2															Projected											
Press release																Projected										
Toters delivered to pilot area HHs																	Projected									
Connect CTY Call to pilot area																		Projected								
<b>PILOT LAUNCH (Wed., Oct. 6th)</b>																			Projected							
Pilot data analysis																				Projected	Projected	Projected	Projected	Projected	Projected	Projected
Pilot area survey (postcard/mailing)																							Projected			
Decision on citywide Single Stream																									Projected	

Projected:   
 Completed: 



## 14. Single Stream Recycling Carts

- **Cascade was low bidder at \$38.40 per cart**
  - Price includes delivery to each pilot area household
- Plan to distribute one cart per household unit
- **Cost of 1,500 carts for pilot: \$57,600**



Cascade 64-gal. cart

---

# 15. Distribution of Recycling Carts

- Distribution to take place 1 week before pilot launch
  - Cascade delivers carts to DPW yard
  - Carts are assembled and delivered by Cascade to each property, 1 cart per household unit
  - City staff to accompany Cascade during deliveries to answer residents' questions
  - Door-to-door follow-up on deliveries after work hours to answer questions and ensure proper number of carts delivered
  - Carts are left with informational flyer with City staff contact info
- Residents can continue to use blue bins



# 16. Single Stream Recycling Outreach

- **Multiple points of communication:**
  - Letters to residents from Mayor and Alderman
  - Press releases
  - Flyers
  - Door hangers and door knockers
  - Targeted CTY calls







**Coming Soon!  
Single Stream Recycling**

On June 22, you become part of a pilot program to test a new easier way to recycle.

When you receive your new City provided 65-gallon recycling cart, you can begin to put ALL of your recycled goods – newspapers and other paper, cardboard, bottles, cans, and plastic containers numbered 1-7 into this cart.

On Wednesday June 22, place your new cart out on the curb just like you normally do.

If you have any questions, please call 311.

ONE CALL - CITY HALL

**3 1 1**

SOMERVILLE



City of Somerville, Massachusetts & Mayor Joseph A. Curtatone

## Single Stream Recycling

Coming soon to your neighborhood!  
You can now place all recyclables in one cart!



office paper



glass



plastics containers 1-7



egg cartons



phone books



magazines



newspapers



cartons



### Easy Recycling

Everything in one place!

- Use your new recycling cart to keep all your recycling in one place.
- Put all papers, cardboard, glass and plastics bottles, cans in the cart
- Place the cart out on the curb on your regular trash day.
- Thanks for helping keep Somerville clean and green!

**NO TRASH, PLASTIC BAGS, FOOD, YARD WASTE, OR ANY OTHER WASTE**

[www.somervillema.gov](http://www.somervillema.gov)



ONE CALL - CITY HALL

**3 1 1**

SOMERVILLE



# 17. Single Stream Outreach, Continued

- **Multiple points of communication:**
  - Minimum of two community meetings
  - Single Stream project manager
  - Recycling webpage with FAQs
  - Videos on cable channel
  - Thursday night door-to-door surveys
  - Targeted senior house visits/COA





---

## 18. Pilot Evaluation

- **Track comments & concerns each week to 311 and Mayor's Office**
  - **Track weekly recycling data**
  - **Survey pilot area residents during pilot to measure satisfaction with program**
  - **Analyze pilot data and develop citywide recycling program recommendations**
    - Present results and recommendations to BOA and residents
-



---

# 19. Discussion

## QUESTIONS?

