



CITY OF SOMERVILLE
Commonwealth of Massachusetts
93 Highland Avenue
Somerville, MA 02143
(617) 625-6600

BUSINESS LICENSE APPLICATION - Grant of Location

File #: 22-011210

License #: BL22-000072

Address: 7 CENTRAL ST

Licensee: Dave Flewelling Comcast of Massachusetts/ New Hampshire, LLC

DBA Name: Comcast Cable Communications Management, LLC

Business Ownership Type: LLC

Legal Name of Entity: Comcast Cable Communications Management, LLC

Owners/Officers: Brian Roberts, Brian Roberts, Brian Roberts, Brian Roberts

License Information:

Grant of location issued to: Comcast Cable Communications Management, LLC

Describe the reason for the work, and the intended beneficiaries: Providing Comcast Service to No. 7 Central Street

Insert here the same detailed description of the work as appears in the attached Grant of Location Order: Central Street: Starting at Utility Pole No. 56/2 excavating to place (1) 4" PVC Conduit 28'+/_ to provide service to number 7 Central Street.

Approval Conditions:

Approved By:

Isabela Maia, Approved

Malik Drayton, Approved with Conditions

APPROVAL CONDITION: MD20220718: Contractor shall take all necessary precautions to avoid damaging any tree or tree part with equipment.

APPROVAL CONDITION: MD20220718: All nearby street tree(s) shall be protected prior to and during all construction activities using TREE BOX or TREE WRAPS. . TREE BOX shall be constructed from 2 in. x 4 in. lumber creating a box around the border of the tree pit with 2 in. x 4 in. lumber standing straight up at the corners and wrapped with orange snow fence. Detail attached. . TREE WRAPS (TREE TRUNK WRAPPING PROTECTION LUMBER) shall consist of 2 in. x 4 in. and 8 ft. height lumber wired together in close spacing with zip ties or 16 gauge galvanized steel wire to form a protective enclosure around tree trunks. Use burlap to separate the wood from the bark if necessary to prevent wood from scraping or bruising bark. Do not use staples or puncture the trunk in any way.

APPROVAL CONDITION: MD20220718: Any tree roots less than two (2) inches in diameter that

cannot be avoided during construction shall be carefully and cleanly cut with a clean pair of pruning shears or loppers. Roots are to be cut back flush with the edge of the trench. If any tree roots greater than two (2) inches in diameter are encountered, stop work immediately and contact the City Urban Forester. Any and all pruning of roots greater than 2 inches in diameter must be completed under the supervision of the City Urban Forester.

Eric Weisman, Approved

Kimberly M. Wells, Approved



CITY OF SOMERVILLE, MASSACHUSETTS
CITY CLERK'S OFFICE
KATJANA BALLANTYNE
MAYOR

KIMBERLY M. WELLS
CITY CLERK

August 16, 2022

NOTICE OF PUBLIC HEARING

You are hereby notified that the Somerville City Council will hold a Public Hearing on the following Petition. You are receiving this Notice because the Petitioner has reported that you own property that abuts the work that is being proposed. You and other members of the public are invited to attend and be heard at this Hearing.

This meeting of the City Council will also be conducted via remote participation, online in a webinar hosted on the GoToWebinar platform.

You have three ways to be heard at this meeting:

1. To attend and be heard, enter the link exactly as it appears below into your internet browser any time before the meeting. You will then be asked to register for the meeting. After registering, you will receive an email with instructions to join the webinar when it starts.
2. You may also testify in person in the City Council Chamber, City Hall, 2nd Floor, 93 Highland Avenue, Somerville, MA 02143
3. If you are unable to attend but wish to be heard, you may send written comments by US mail to the City Clerk at the address below, or by email to cityclerk@somervillema.gov. Your comments must arrive no later than 12 Noon on the day of the Hearing, in order to be sure they are conveyed to the Council.

PETITION: Comcast seeks a Grant of Location to install 28 feet of conduit in Central Street, from Utility Pole 56/2 located at the intersection of Cypress Street and Central Street to a point of pickup at 7 Central Street.

PLACE: or <https://attendee.gotowebinar.com/register/5803739566728446733> or City Council Chambers, City Hall, 2nd Floor, 93 Highland Avenue, Somerville, MA 02143

TIME: Thursday, August 25, 2022, at 7:00 PM

PURPOSE: The work is necessary to provide or improve service to 7 Central Street.



**PROPOSED CONDUIT INSTALLATION
AT
7 CENTRAL ST
SOMERVILLE, MA**



LOCUS
N.T.S

INDEX OF DRAWING

SHEET NO.	DESCRIPTION
--	COVER SHEET
01	PROPOSED CONDUIT INSTALLATION



ENGINEERING GROUP
201 Boston Post Rd West - Suite 100
Marlborough, MA 01752
(774) 556-2924 www.axisgroup.com



**TRAFFIC MANAGEMENT PLAN
AT
7 CENTRAL ST
SOMERVILLE, MA**

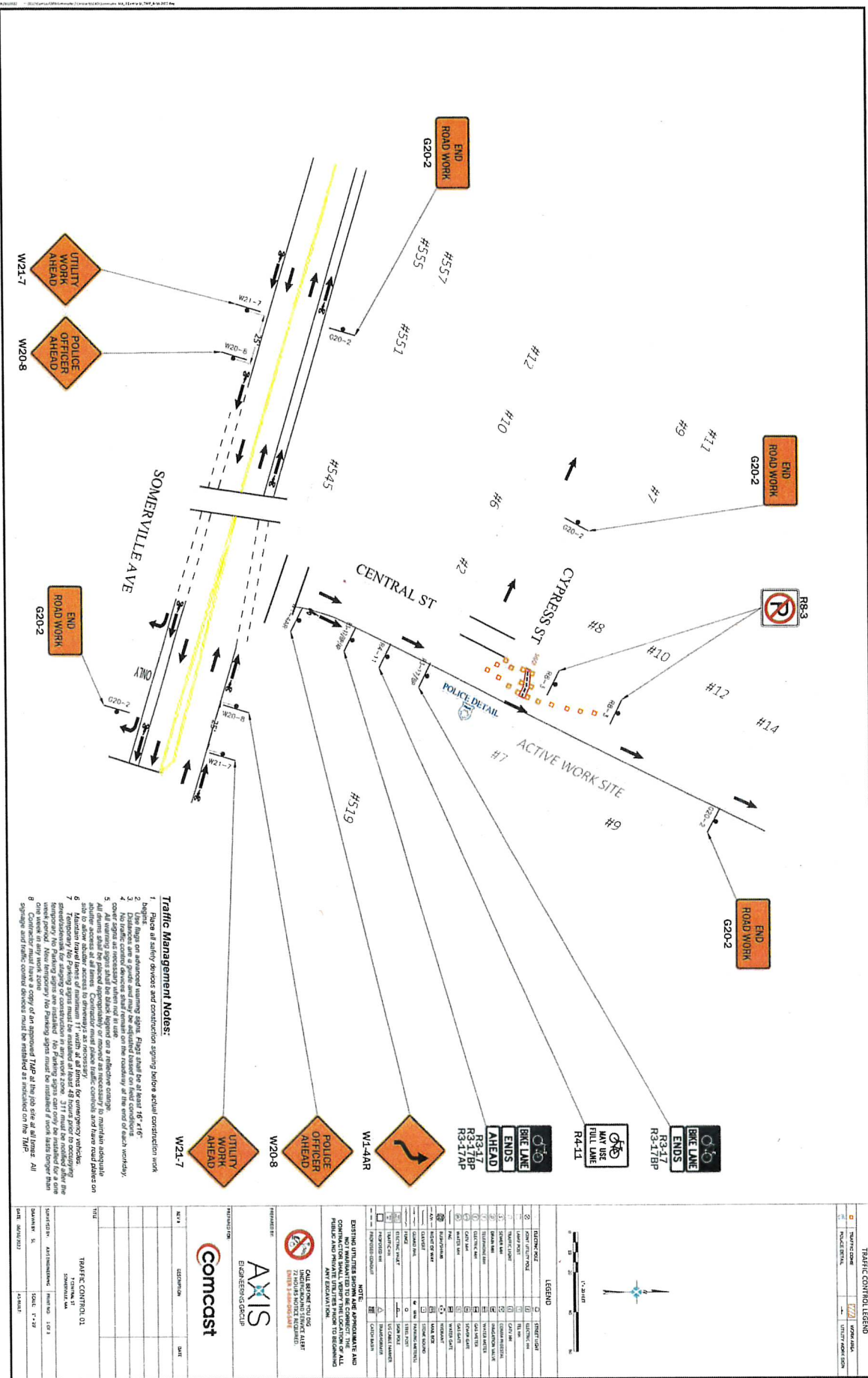


LOCUS
N.T.S

INDEX OF DRAWING

SHEET NO.	DESCRIPTION
-	COVER SHEET
01	TRAFFIC CONTROL 01
02	TRAFFIC CONTROL 02
03	TRAFFIC CONTROL 03

AXIS
ENGINEERING GROUP
201 Boston Post Rd West - Suite 100
Marlborough, MA 01752
(774) 556-2924 www.axisgroup.com



- Traffic Management Notes:**
1. Setup of safety devices and construction opening before actual construction work begins.
 2. Lane flags on advanced warning signs. Flag shall be at least 14'-0" x 14'-0" and shall be placed at the end of each work zone.
 3. No traffic control devices shall be retained on the roadway at the end of each workday.
 4. Control signs as necessary shall be placed on a reflective orange background.
 5. All devices shall be placed appropriately or removed as necessary to maintain adequate clearance for traffic.
 6. All devices shall be placed at least 11' within of all lanes for temporary work zones.
 7. All devices shall be placed at least 11' within of all lanes for temporary work zones.
 8. Contractor must have a copy of this plan and TMAP 4 on the job site at all times. All signs and other control devices shall be installed as indicated on the TMAP.

TRAFFIC CONTROL LEGEND

TRAFFIC CONE	WORK AREA
NOISE DETAIL	UTILITY MODIFICATION

LEGEND

1	TRAFFIC CONE
2	NOISE DETAIL
3	UTILITY MODIFICATION
4	TRAFFIC CONE
5	NOISE DETAIL
6	UTILITY MODIFICATION
7	TRAFFIC CONE
8	NOISE DETAIL
9	UTILITY MODIFICATION
10	TRAFFIC CONE
11	NOISE DETAIL
12	UTILITY MODIFICATION
13	TRAFFIC CONE
14	NOISE DETAIL
15	UTILITY MODIFICATION
16	TRAFFIC CONE
17	NOISE DETAIL
18	UTILITY MODIFICATION
19	TRAFFIC CONE
20	NOISE DETAIL
21	UTILITY MODIFICATION
22	TRAFFIC CONE
23	NOISE DETAIL
24	UTILITY MODIFICATION
25	TRAFFIC CONE
26	NOISE DETAIL
27	UTILITY MODIFICATION
28	TRAFFIC CONE
29	NOISE DETAIL
30	UTILITY MODIFICATION
31	TRAFFIC CONE
32	NOISE DETAIL
33	UTILITY MODIFICATION
34	TRAFFIC CONE
35	NOISE DETAIL
36	UTILITY MODIFICATION
37	TRAFFIC CONE
38	NOISE DETAIL
39	UTILITY MODIFICATION
40	TRAFFIC CONE
41	NOISE DETAIL
42	UTILITY MODIFICATION
43	TRAFFIC CONE
44	NOISE DETAIL
45	UTILITY MODIFICATION
46	TRAFFIC CONE
47	NOISE DETAIL
48	UTILITY MODIFICATION
49	TRAFFIC CONE
50	NOISE DETAIL
51	UTILITY MODIFICATION
52	TRAFFIC CONE
53	NOISE DETAIL
54	UTILITY MODIFICATION
55	TRAFFIC CONE
56	NOISE DETAIL
57	UTILITY MODIFICATION
58	TRAFFIC CONE
59	NOISE DETAIL
60	UTILITY MODIFICATION
61	TRAFFIC CONE
62	NOISE DETAIL
63	UTILITY MODIFICATION
64	TRAFFIC CONE
65	NOISE DETAIL
66	UTILITY MODIFICATION
67	TRAFFIC CONE
68	NOISE DETAIL
69	UTILITY MODIFICATION
70	TRAFFIC CONE
71	NOISE DETAIL
72	UTILITY MODIFICATION
73	TRAFFIC CONE
74	NOISE DETAIL
75	UTILITY MODIFICATION
76	TRAFFIC CONE
77	NOISE DETAIL
78	UTILITY MODIFICATION
79	TRAFFIC CONE
80	NOISE DETAIL
81	UTILITY MODIFICATION
82	TRAFFIC CONE
83	NOISE DETAIL
84	UTILITY MODIFICATION
85	TRAFFIC CONE
86	NOISE DETAIL
87	UTILITY MODIFICATION
88	TRAFFIC CONE
89	NOISE DETAIL
90	UTILITY MODIFICATION
91	TRAFFIC CONE
92	NOISE DETAIL
93	UTILITY MODIFICATION
94	TRAFFIC CONE
95	NOISE DETAIL
96	UTILITY MODIFICATION
97	TRAFFIC CONE
98	NOISE DETAIL
99	UTILITY MODIFICATION
100	TRAFFIC CONE
101	NOISE DETAIL
102	UTILITY MODIFICATION
103	TRAFFIC CONE
104	NOISE DETAIL
105	UTILITY MODIFICATION
106	TRAFFIC CONE
107	NOISE DETAIL
108	UTILITY MODIFICATION
109	TRAFFIC CONE
110	NOISE DETAIL
111	UTILITY MODIFICATION
112	TRAFFIC CONE
113	NOISE DETAIL
114	UTILITY MODIFICATION
115	TRAFFIC CONE
116	NOISE DETAIL
117	UTILITY MODIFICATION
118	TRAFFIC CONE
119	NOISE DETAIL
120	UTILITY MODIFICATION
121	TRAFFIC CONE
122	NOISE DETAIL
123	UTILITY MODIFICATION
124	TRAFFIC CONE
125	NOISE DETAIL
126	UTILITY MODIFICATION
127	TRAFFIC CONE
128	NOISE DETAIL
129	UTILITY MODIFICATION
130	TRAFFIC CONE
131	NOISE DETAIL
132	UTILITY MODIFICATION
133	TRAFFIC CONE
134	NOISE DETAIL
135	UTILITY MODIFICATION
136	TRAFFIC CONE
137	NOISE DETAIL
138	UTILITY MODIFICATION
139	TRAFFIC CONE
140	NOISE DETAIL
141	UTILITY MODIFICATION
142	TRAFFIC CONE
143	NOISE DETAIL
144	UTILITY MODIFICATION
145	TRAFFIC CONE
146	NOISE DETAIL
147	UTILITY MODIFICATION
148	TRAFFIC CONE
149	NOISE DETAIL
150	UTILITY MODIFICATION

NOTE: EXISTING UTILITIES SHOWN ARE APPROXIMATE AND CONTRACTOR SHALL VERIFY THE LOCATION OF ALL UTILITIES AND ANY MODIFICATION TO EXISTING UTILITIES SHALL BE INDICATED ON THE TMAP.

CALL BEFORE YOU DIG: (800) 4-A-DAWN (4262)

EMERGENCY SERVICES ALERT: (800) 4-A-DAWN (4262)

TRAFFIC CONTROL: (800) 4-A-DAWN (4262)

CONTRACTOR: (800) 4-A-DAWN (4262)

OWNER: (800) 4-A-DAWN (4262)

DATE: 10/15/2023

SCALE: 1" = 20'

PROJECT: Comcast

CLIENT: Comcast

DESIGNER: AXIS ENGINEERING GROUP

DATE: 10/15/2023

TITLE: TRAFFIC CONTROL

DATE: 10/15/2023

SCALE: 1" = 20'

PROJECT: Comcast

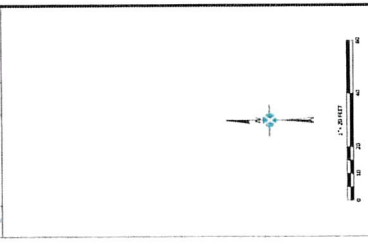
CLIENT: Comcast

DESIGNER: AXIS ENGINEERING GROUP

DATE: 10/15/2023

TRAFFIC CONTROL LEGEND

TRAFFIC ZONE	WORK AREA
POWER DETAIL	UTILITY WORK SIGN



LEGEND

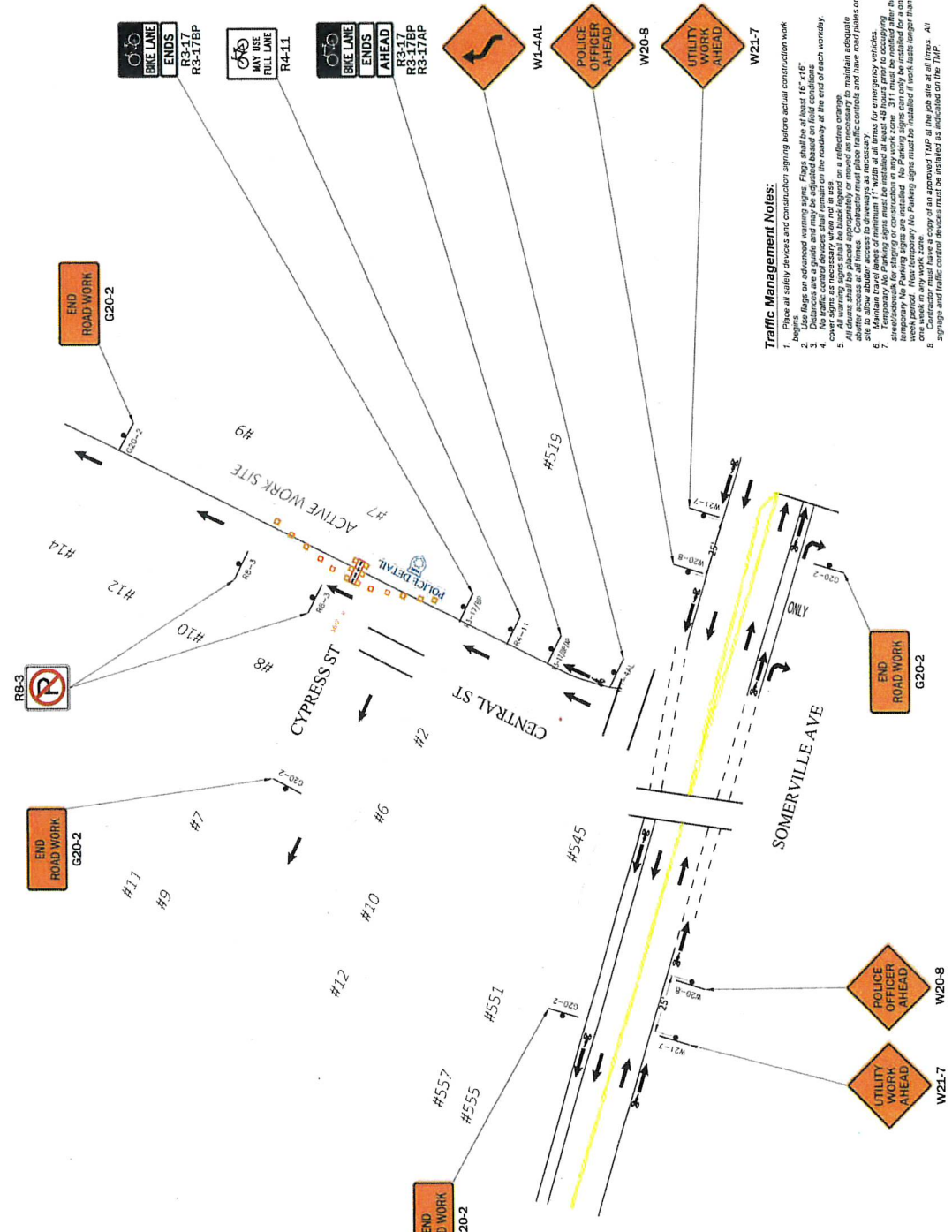
1	ELECTRIC POLE	11	TRAFFIC LIGHT
2	DRIVE UTILITY POLE	12	ELECTRIC POLE
3	LAMP POST	13	UTILITY POLE
4	STREET LIGHT	14	TRAFFIC SIGNAL
5	TRAFFIC SIGNAL	15	TRAFFIC SIGNAL
6	TRAFFIC SIGNAL	16	TRAFFIC SIGNAL
7	TRAFFIC SIGNAL	17	TRAFFIC SIGNAL
8	TRAFFIC SIGNAL	18	TRAFFIC SIGNAL
9	TRAFFIC SIGNAL	19	TRAFFIC SIGNAL
10	TRAFFIC SIGNAL	20	TRAFFIC SIGNAL

NOTE:
 CONTRACTOR SHALL MAINTAIN AND NOT INTERRUPT TO BE CONNECTED TO THE POWER SUPPLY TO ANY EXCAVATION.
 CALL BEFORE YOU DIG
 UNDERGROUND SERVICE ALERT
 800-4-A-SAFE

PREPARED BY: **AXIS ENGINEERING GROUP**

PREPARED FOR: **Comcast**

DATE: 10/20/2011	SCALE: 1"=40'
PROJECT: TRAFFIC CONTROL 02	DATE: 10/20/2011
LOCATION: SOMERVILLE, MA	PROJECT: 1101-1
DATE: 10/20/2011	SCALE: 1"=40'



- Traffic Management Notes:**
- Place all safety devices and construction signing before actual construction work begins.
 - Use flags on advance warning signs. The length shall be 165'-145'.
 - Use cones and barrels to delineate work areas. The length shall be 165'-145'.
 - No traffic control devices shall remain on the roadway at the end of each workday.
 - When warning signs shall be black legend on a reflective orange.
 - All signs shall be placed appropriately or moved as necessary to maintain adequate sight distance.
 - Maintain travel lanes of minimum 11' width at all times. Temporary work areas shall be clearly marked with reflective orange traffic barrels.
 - When working in any work zone, 311 must be notified after the temporary work area is established.
 - When working in any work zone, 311 must be notified after the temporary work area is established.
 - When working in any work zone, 311 must be notified after the temporary work area is established.
 - When working in any work zone, 311 must be notified after the temporary work area is established.

Location:
44/ G/ 6/ /
545 SOMERVILLE AVE
Owner:
TRUST CENTRAL STREET APARTMENT
JOSEPH W HOWARD TRSTE
PO BOX 440-361
SOMERVILLE, MA 02144

Location:
44/ F/ 9/ /
8 CENTRAL ST
Owner:
KOWALSKI CHRISTINE
8 CENTRAL ST
SOMERVILLE, MA 02145

Location:
52/ H/ 39/ /
519 SOMERVILLE AVE
Owner:
LINEAR RETAIL SOMERVILLE #1 LLC
FIVE BURLINGTON WOODS DRIVE
BURLINGTON, MA 01803

Location:
52/ H/ 40/ /
7 CENTRAL ST
Owner:
7-9 CENTRAL ST
20 FOX RD
WALTHAM, MA 02451

Location:
44/ F/ 8/ /
10 CENTRAL ST
Owner:
NASSIOPOULOS GOERGE & MILAS
DIMITRA TRST
10 CENTRAL STREET REALTY TRUST
10 CENTRAL ST
SOMERVILLE, MA 02143

Location:
52/ H/ 42/ /
9 CENTRAL ST
Owner:
7-9 CENTRAL ST
20 FOX RD
WALTHAM, MA 02451