



CITY OF SOMERVILLE
Commonwealth of Massachusetts
93 Highland Avenue
Somerville, MA 02143
(617) 625-6600

BUSINESS LICENSE APPLICATION - Grant of Location

File #: 20-017845

License #: BL20-000152

Address: 300-398 GRAND UNION BLVD

Licensee: Joanne Callender NSTAR Electric

DBA Name: Eversource energy

Business Ownership Type: Corporation

Legal Name of Entity: NSTAR Electric Company dba Eversource Energy

Owners/Officers: James Judge, , ,

License Information:

Grant of location issued to: NSTAR Electric Company dba Eversource Energy

Describe the reason for the work, and the intended beneficiaries: CUSTOMER REQUESTING TO RELOCATE DUCT BANK BETWEEN MH29175 AND MH29310

Insert here the same detailed description of the work as appears in the attached Grant of Location Order: Grand Union Boulevard Southerly from MN29310, approximately 285 feet North of Revolution Drive, to install approximately 337 feet of conduit.

Approval Conditions:

Approved By:

Karla Cuarezma, Approved

Malik Drayton, Approved with Conditions

APPROVAL CONDITION: MD20201029: Contractor shall take all necessary precautions to avoid damaging any tree or tree part with equipment.

APPROVAL CONDITION: MD20201029: All nearby street tree(s) shall be protected prior to and during all construction activities using TREE BOX or TREE WRAPS. . TREE BOX shall be constructed from 2 in. x 4 in. lumber creating a box around the border of the tree pit with 2 in. x 4 in. lumber standing straight up at the corners and wrapped with orange snow fence. Detail attached. . TREE WRAPS (TREE TRUNK WRAPPING PROTECTION LUMBER) shall consist of 2 in. x 4 in. and 8 ft. height lumber wired together in close spacing with zip ties or 16 gauge galvanized steel wire to form a protective enclosure around tree trunks. Use burlap to separate the wood from the bark if necessary to prevent wood from scraping or bruising bark. Do not use staples or puncture the trunk in any way.

APPROVAL CONDITION: MD20201029: Any tree roots less than two (2) inches in diameter that cannot be avoided during construction shall be carefully and cleanly cut with a clean pair of pruning shears or loppers. Roots are to be cut back flush with the edge of the trench. If any tree roots greater than two (2) inches in diameter are encountered, stop work immediately and contact the City Urban Forester. Any and all pruning of roots greater than 2 inches in diameter must be completed under the supervision of the City Urban Forester.

Mark Lawhorne, Approved

John J. Long, Approved

CITY OF SOMERVILLE, MASSACHUSETTS
CITY CLERK'S OFFICE

JOSEPH A. CURTATONE
MAYOR

JOHN J. LONG
CITY CLERK

November 3, 2020

NOTICE OF PUBLIC HEARING

You are hereby notified that the Somerville City Council will hold a Public Hearing on the following Petition. You are receiving this Notice because the Petitioner has reported that you own property that abuts the work that is being proposed. You and other members of the public are invited to attend and be heard at this Hearing.

Because of Governor Baker's and Mayor Curtatone's recent orders limiting the number of people that may gather in one place, **this meeting of the City Council will be conducted via remote participation, online in a webinar hosted on the GoToWebinar platform.**

You have two ways to be heard at this meeting:

1. To attend and be heard, enter the link exactly as it appears below into your internet browser anytime before the meeting. You will then be asked to register for the meeting. After registering, you will receive an email with instructions to join the webinar when it starts.
2. If you are unable to attend but wish to be heard, you may send written comments by US mail to the City Clerk at the address below, or by email to cityclerk@somervillema.gov. Your comments must arrive no later than 12 Noon on the day of the Hearing, in order to be sure they are conveyed to the Council.

PETITION: Eversource (NStar Electric) is applying for a Grant of Location to install 337 feet of conduit in Grand Union Boulevard, from manhole 29310 and ending at manhole 29175.

PLACE: <https://attendee.gotowebinar.com/register/7464585951106483470>

TIME: Thursday, November 12, 2020, at 7:00 PM.

PURPOSE: The work is necessary to relocate duck bank.

W.O. #2401450

EVERSOURCE

101 Linwood Street
Somerville, MA 02143

October 24, 2020

John Long/Andrea Torres
Office of the City Clerk
93 Highland Avenue
Somerville, MA 02143

Re: Grand Union Boulevard
Somerville, MA
W.O. #2401450

Dear Sir:

The NSTAR Electric Company d/b/a Eversource Energy, respectfully requests a Grant of Location to install 337 feet of conduit in Grand Union Boulevard .

This work is necessary to supply new underground service to Duct Bank relocated between MH29175 and MH29310.

Thank you for your prompt attention to this request. If you have any questions, please call Jacqueline Duffy, Right of Way Agent, 617-629-3204.

Very truly yours,

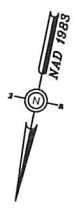
Kelly-Ann Correia

Kelly-Ann Correia,
Supervisor

KC/jc

cc: Highway Department
Engineering Department

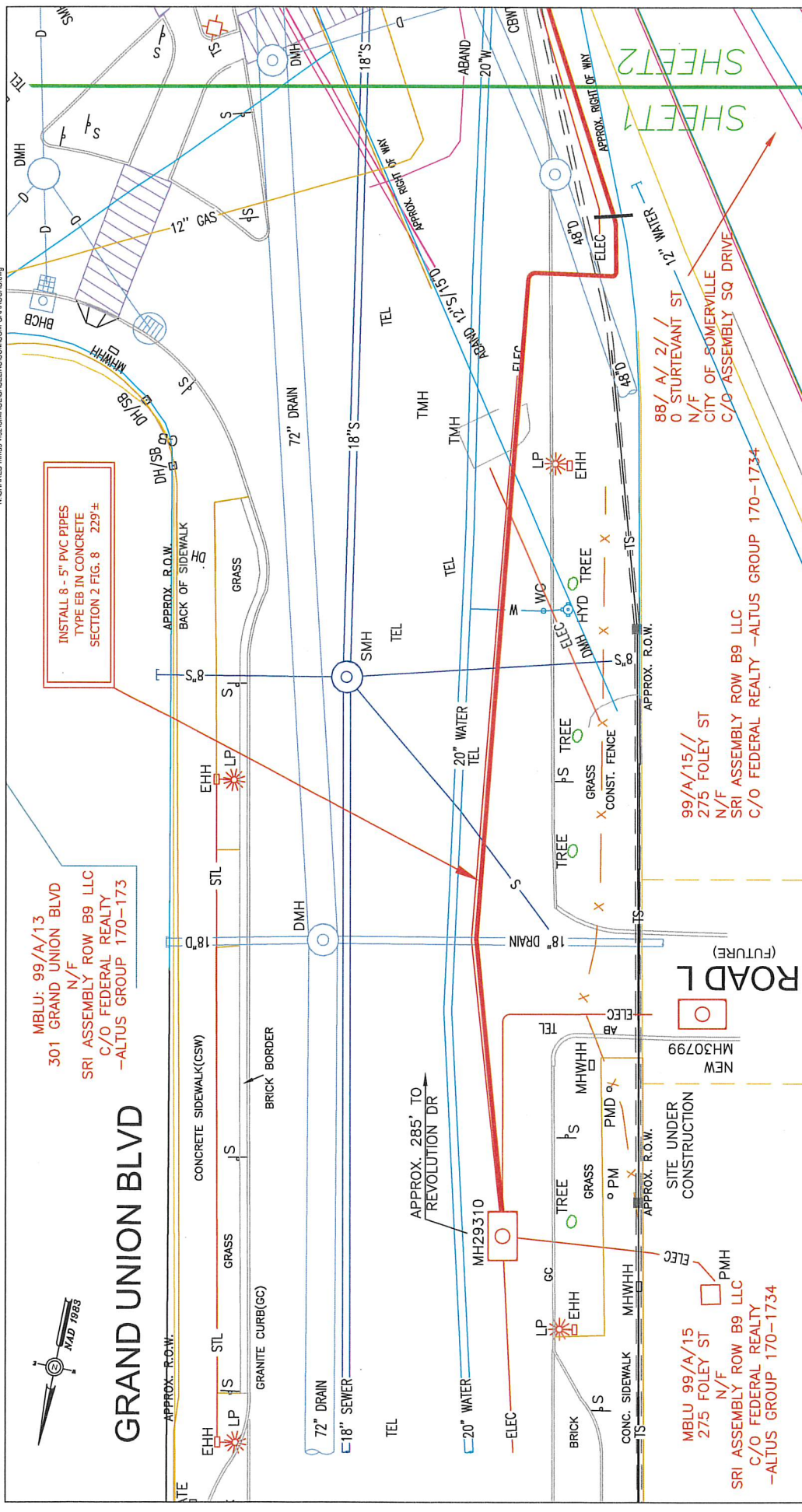
K:\SHARED-FILES\PROJECTS\BASELINE\CONCRETE\CONCRETE.dwg



MBLU: 99/A/13
301 GRAND UNION BLVD
N/F
SRI ASSEMBLY ROW B9 LLC
C/O FEDERAL REALTY
-ALTUS GROUP 170-173

GRAND UNION BLVD

INSTALL 8 - 5" PVC PIPES
TYPE EB IN CONCRETE
SECTION 2 FIG. 8 229'±



ASTAR EVERSOURCE
dib6
1105 MASSACHUSETTS AVE. ROCHESTER, MASS. 02129

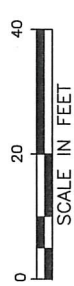
Plan of
GRAND UNION BLVD
SOMERVILLE
MASSACHUSETTS
Showing PROPOSED CONDUIT LOCATION

Proposed Structures: LM
Approved: T. THIBAUT
Scale: 1"=20'
Date: 10/10/2020
SHEET: 1 of 2

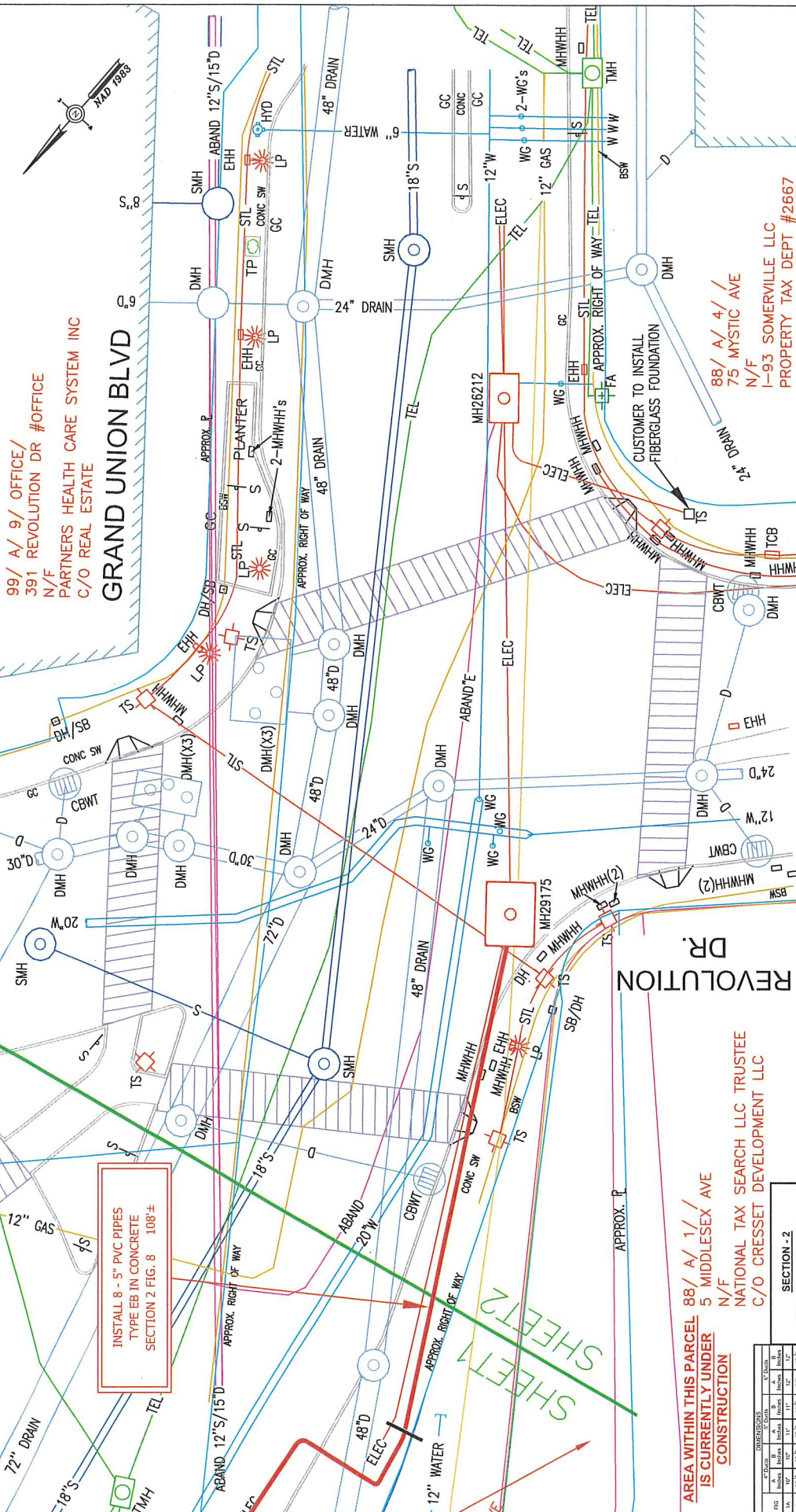
BY YOUR USE OF THE INFORMATION CONTAINED IN THIS MAP, YOU AGREE THAT THE INFORMATION IS FOR YOUR INFORMATION ONLY AND IS NOT A GUARANTEE OF ANY KIND. THE INFORMATION IS PROVIDED AS IS, WITHOUT WARRANTY OF ANY KIND, INCLUDING BUT NOT LIMITED TO THE IMPLIED WARRANTIES OF MERCHANTABILITY AND FITNESS FOR A PARTICULAR PURPOSE. THE INFORMATION IS NOT TO BE USED FOR ANY PURPOSE OTHER THAN THAT FOR WHICH IT WAS PROVIDED. THE INFORMATION IS NOT TO BE USED FOR ANY PURPOSE OTHER THAN THAT FOR WHICH IT WAS PROVIDED. THE INFORMATION IS NOT TO BE USED FOR ANY PURPOSE OTHER THAN THAT FOR WHICH IT WAS PROVIDED.

MASS. LAW
REQUIRES 72 HOURS ADVANCE NOTICE TO UTILITY COMPANIES
BEFORE DIGGING BY ANYONE. CALL DIG-SAFE 1-888-344-7233

C# 224-20
Ward #
Work Order # 2401480
Surveyed by: PJ/AC
Research by: JC/SC
Plotted by: BP
Proposed Structures: LM
Approved: T. THIBAUT
Scale: 1"=20'
Date: 10/10/2020
SHEET: 1 of 2



N:\SHARED\mms-102\DMA\GE\BASELINE\SONOM\GRAND\UAB.dwg



99/ A/ 9/ OFFICE/
391 REVOLUTION DR #OFFICE
N/F
PARTNERS HEALTH CARE SYSTEM INC
C/O REAL ESTATE

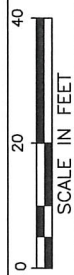
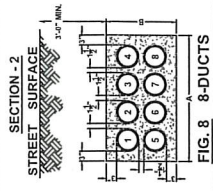
GRAND UNION BLVD

AREA WITHIN THIS PARCEL 88/ A/ 1/ 1/
5 MIDDLESEX AVE
N/F
NATIONAL TAX SEARCH LLC TRUSTEE
C/O CRESSET DEVELOPMENT LLC

88/ A/ 4/ 1/
75 MYSTIC AVE
N/F
SOMERVILLE LLC
PROPERTY TAX DEPT #2667

INSTALL 8 - 5" PVC PIPES
TYPE EB IN CONCRETE
SECTION 2 FIG. 8 108'±

FIG. 8	DIMENSIONS		CONCRETE		PIPE		SLOPE		LENGTH	
	A	B	A	B	A	B	A	B	A	B
1	10'-0"	10'-0"	10'-0"	10'-0"	10'-0"	10'-0"	10'-0"	10'-0"	10'-0"	10'-0"
2	10'-0"	10'-0"	10'-0"	10'-0"	10'-0"	10'-0"	10'-0"	10'-0"	10'-0"	10'-0"
3	10'-0"	10'-0"	10'-0"	10'-0"	10'-0"	10'-0"	10'-0"	10'-0"	10'-0"	10'-0"
4	10'-0"	10'-0"	10'-0"	10'-0"	10'-0"	10'-0"	10'-0"	10'-0"	10'-0"	10'-0"
5	10'-0"	10'-0"	10'-0"	10'-0"	10'-0"	10'-0"	10'-0"	10'-0"	10'-0"	10'-0"
6	10'-0"	10'-0"	10'-0"	10'-0"	10'-0"	10'-0"	10'-0"	10'-0"	10'-0"	10'-0"
7	10'-0"	10'-0"	10'-0"	10'-0"	10'-0"	10'-0"	10'-0"	10'-0"	10'-0"	10'-0"
8	10'-0"	10'-0"	10'-0"	10'-0"	10'-0"	10'-0"	10'-0"	10'-0"	10'-0"	10'-0"
9	10'-0"	10'-0"	10'-0"	10'-0"	10'-0"	10'-0"	10'-0"	10'-0"	10'-0"	10'-0"
10	10'-0"	10'-0"	10'-0"	10'-0"	10'-0"	10'-0"	10'-0"	10'-0"	10'-0"	10'-0"
11	10'-0"	10'-0"	10'-0"	10'-0"	10'-0"	10'-0"	10'-0"	10'-0"	10'-0"	10'-0"
12	10'-0"	10'-0"	10'-0"	10'-0"	10'-0"	10'-0"	10'-0"	10'-0"	10'-0"	10'-0"
13	10'-0"	10'-0"	10'-0"	10'-0"	10'-0"	10'-0"	10'-0"	10'-0"	10'-0"	10'-0"
14	10'-0"	10'-0"	10'-0"	10'-0"	10'-0"	10'-0"	10'-0"	10'-0"	10'-0"	10'-0"
15	10'-0"	10'-0"	10'-0"	10'-0"	10'-0"	10'-0"	10'-0"	10'-0"	10'-0"	10'-0"
16	10'-0"	10'-0"	10'-0"	10'-0"	10'-0"	10'-0"	10'-0"	10'-0"	10'-0"	10'-0"
17	10'-0"	10'-0"	10'-0"	10'-0"	10'-0"	10'-0"	10'-0"	10'-0"	10'-0"	10'-0"
18	10'-0"	10'-0"	10'-0"	10'-0"	10'-0"	10'-0"	10'-0"	10'-0"	10'-0"	10'-0"
19	10'-0"	10'-0"	10'-0"	10'-0"	10'-0"	10'-0"	10'-0"	10'-0"	10'-0"	10'-0"
20	10'-0"	10'-0"	10'-0"	10'-0"	10'-0"	10'-0"	10'-0"	10'-0"	10'-0"	10'-0"



APPROVAL PLAN

LENGTH OF EXTENSION 337'±

ASTAR EVERSOURCE
2019
1185 MASSACHUSETTS AVE. DORCHESTER, MASS. 01925

CH 224-20
Ward #
Work Order # 2401450
Surveyed by: PG/JC
Research by: JC/SC
Plotted by: BP

Plan of GRAND UNION BLVD
SOMERVILLE
Showing PROPOSED CONDUIT LOCATION

Proposed Structures: LM
Approved: T. THIBAUT
Scale: 1"=20'
Date: 10/10/2020
SHEET 2 of 2

BY USING OR THE INFORMATION CONTAINED IN THIS PLAN, THE USER AGREES THAT THE INFORMATION IS NOT TO BE USED FOR ANY PURPOSE OTHER THAN THAT FOR WHICH IT WAS PREPARED. THE INFORMATION IS PROVIDED AS IS, WITHOUT WARRANTY OF ANY KIND, EXPRESS OR IMPLIED, INCLUDING BUT NOT LIMITED TO THE WARRANTIES OF MERCHANTABILITY, FITNESS FOR A PARTICULAR PURPOSE, AND NONINFRINGEMENT. THE USER SHALL BE RESPONSIBLE FOR OBTAINING ALL NECESSARY PERMITS AND FOR THE ACCURACY OF THE INFORMATION. THE INFORMATION IS NOT TO BE USED FOR ANY PURPOSE OTHER THAN THAT FOR WHICH IT WAS PREPARED. THE INFORMATION IS PROVIDED AS IS, WITHOUT WARRANTY OF ANY KIND, EXPRESS OR IMPLIED, INCLUDING BUT NOT LIMITED TO THE WARRANTIES OF MERCHANTABILITY, FITNESS FOR A PARTICULAR PURPOSE, AND NONINFRINGEMENT. THE USER SHALL BE RESPONSIBLE FOR OBTAINING ALL NECESSARY PERMITS AND FOR THE ACCURACY OF THE INFORMATION.

MASS. LAW
REQUIRES 72 HOURS ADVANCE NOTICE TO UTILITY COMPANIES
BEFORE DIGGING BY ANYONE. CALL DIG-SAFE 1-888-344-7233

WO # 2401450
GRAND UNION BOULEVARD
SOMERVILLE, MA 02145

MBLU: 88/ A/ 4/ /
75 MYSTIC AVE
N/F
I-93 SOMERVILLE LLC
C/O PROPERTY TAX DEPT #2667
PO BOX 105842
ATLANTA, GA 30348

MBLU: 99/ A/ 9/ RETAIL/
391 REVOLUTION DR #RETAIL
N/F
STREET RETAIL INC
C/O ALTUS GROUP
P.O.BOX 92129
SOUTHLAKE, TX 76092

MBLU: 88/ A/ 1/ /
5 MIDDLESEX AVE
N/F
NATIONAL TAX SEARCH LLC TRUSTEE
S/O CDNV ASSEMBLY LLC
C/O CRESSET DEVELOPMENT LLC
120 WATER ST SUITE 200
BOSTON, MA 02109

MBLU: 99 / A / 13
301 GRAND UNION BLVD
N/F
SRI ASSEMBLY ROW B7 LLC
C/O FEDERAL REALTY -ALTUS GRUOUP
170-173
PO BOX 92129
SOUTHLAKE, TX 76092

MBLU: 99 / A / 15
275 FOLEY ST
N/F
SRI ASSEMBLY ROW B9 LLC
C/O FEDERAL REALTY -ALTUS GROUP
170-1734
PO BOX 92129
SOUTHLAKE, TX 76092

MBLU: 88/ A/ 2/ /
0 STURTEVANT ST
N/F
CITY OF SOMERVILLE
C/O ASSEMBLY SQ DRIVE

MBLU: 99/ A/ 9/ OFFICE/
391 REVOLUTION DR #OFFICE
N/F
PARTNERS HEALTH CARE SYSTEM INC
C/O ALTUS GROUP
PO BOX 92129
SOUTHLAKE, TX 76092