

American Rescue Plan Act

Lizzi Weyant, Government Affairs

Metropolitan Area Planning Council

ARPA Timeline

- Signed into law on March 11, 2021
- Designed to be the first COVID recovery bill, different than a relief bill
- Treasury released materials associated with the Coronavirus State and Local Fiscal Recovery Funds on May 10, 2021
 - [Interim Final Rule and Fact Sheet](#)
 - Updated state and local funding amounts

Funds have to be obligated by December 31, 2024
and spent by December 21, 2026

Funding Amounts

State: \$5.3
billion

Local governments:
\$3.4 billion

TOTAL: \$8.7 billion
for states, counties,
and municipalities

Eligible Uses

Public Health Emergency	Respond to the public health emergency
Premium Pay	Provide premium pay to employees providing essential work
Revenue Loss	Provide government services to the extent of the reduction in revenue
Infrastructure	Invest in sewer, water, or broadband infrastructure

Prohibited Uses

Offset tax reduction	You cannot use funds to offset a reduction in taxes
Pensions	Funds cannot be deposited into a pension fund (but covered benefits for new employees are okay)
Debt servicing	Infrastructure investments must be “pay go” investments
Stabilization Funds	You cannot deposit funds into a Rainy Day or Stabilization Fund.

Responding to the Public Health Emergency

COVID-related costs: testing, tracing, PPE, vaccines

Public health: staff, infrastructure, capacity, facilities

Staffing up to pre-pandemic levels in the public sector

Unemployment assistance and job training

Small business and non-profit assistance

Aid to address food, housing, or financial insecurity

Aid to impacted industries

Aid to disproportionately impacted communities*

Aid to Disproportionately Impacted Communities

Addressing health disparities and the social determinants of health

community health workers; lead remediation; violence intervention

Investments in housing and neighborhoods

homelessness services; affordable housing development; residential counseling

Addressing educational disparities

expanded early learning; tutoring or afterschool programs; addressing social, emotional, and mental health needs

Promoting healthy childhood environments

childcare programs; home visitation programs; foster youth services

Revenue Replacement and Premium Pay

Revenue Replacement

- Create a counterfactual revenue collection scenario
- Broad uses, except NOT (1) stabilization fund, (2) debt servicing, (3) pension funds, or (4) to offset tax reductions.

Premium Pay

- Prioritize pay for lower-income workers
- Can be made directly to public sector employees or by grants to private employers
- Broad sectors: healthcare and nursing home; farm and food; janitors; public health and safety; truck, transit, and warehouse; childcare and educators; human and social service

Water, Sewer, and Broadband

All projects should use strong labor standards
– community benefit agreements, > prevailing wage, local hires

Water and Sewer infrastructure: can include projects that *address the impacts of climate change*; drinking water and lead abatement; wastewater, stormwater, water treatment

Broadband Infrastructure: investments should be made in underserved or unserved communities; last-mile connections to homes or businesses; facilitating internet access and digital literacy

Governor Baker's Proposal: \$2.8B

Housing: \$1B total
\$300M for homebuyer opportunities; \$200M for housing production; \$200M for rental production; \$300M for veteran/senior housing

Economic Development: \$450M total

\$100M for downtown development; \$250M for regional investments; \$100M for cultural/tourism

Workforce Development: \$240M for job training

Health Care: \$225M total

\$50M for stressed hospitals; \$175M for addiction and behavioral health services

Infrastructure: \$900M total

\$400M for water/sewer; \$300M for culverts and dams; \$100M for state parks; \$100M for digital divide

Reporting Requirements

- State and Entitlement Communities: Initial interim report + detailed quarterly reports
 - Interim report; due Aug 2021: summary of expenditures by federal expenditure category
 - Quarterly reports, starting Oct 2021: financial data and information on contracts and subawards
- Non-Entitlement Communities: Annual Project and Expenditure reports until December 2026, first due October 2021.
- Munis/Counties with a population over 250K: annual Recovery Plan Performance report due annually in August 2021 and July 2022.

Somerville American Rescue Plan Act (ARPA) Engagement Process

MAPC's Community Engagement Division

September 23, 2021

Somerville City Council Meeting

MAPC's Community Engagement Division



Emily Torres-Cullinane
Co-Director of
Strategic Initiatives
etorres@mapc.org



Carolina Prieto
Community
Engagement
Manager
cprieto@mapc.org



Iolando Spinola
Community
Engagement
Specialist II
ispinola@mapc.org



Christian Brandt,
AICP
Planner &
Community
Engagement
Specialist II
cbrandt@mapc.org



Sasha Parodi
Event Planner &
Special Projects
Coordinator
sparodi@mapc.org

MAPC's Community Engagement Division



Emily Torres-Cullinane
Co-Director of
Strategic Initiatives
etorres@mapc.org



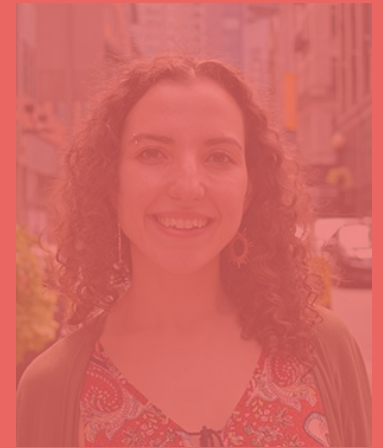
Carolina Prieto
Community
Engagement
Manager
cprieto@mapc.org



Iolando Spinola
Community
Engagement
Specialist II
ispinola@mapc.org



Christian Brandt,
AICP
Planner &
Community
Engagement
Specialist II
cbrandt@mapc.org



Sasha Parodi
Event Planner &
Special Projects
Coordinator
sparodi@mapc.org

Community Engagement Strategy



The purpose of engagement for this project is to:

- Develop a base of collective knowledge and learning about how ARPA funding can be used in Somerville;
- Engage key stakeholders in conversations around ARPA funding;
 - Additional focus on populations hardest hit by the pandemic and its economic impacts, including communities of color, renters, low-income residents, and non-English speaking residents
- Explore community priorities for how the funding should be used;
- Share with City staff what we heard were resident priorities;

Engagement activities will focus on:

- **Providing** clear and accessible information about the ARPA funding that Somerville will receive, including what the money can and can't be used for and what the City's high priority initial emergency spending plans are;
- **Creating** opportunities for Somerville residents to share priorities and program suggestions with the City to inform further ARPA spending that best serves the community.

Equity Priorities



Language accessibility

- 12-person+ outreach team (six+ adults, six+ youth/young adults, six languages) to conduct intensive proactive outreach, surveying, and listening that meets people where they are (SOIA & Communications to coordinate). MAPC staff can also provide in-meeting Spanish interpretation
- Interpreted meetings and translated materials for a range of meeting and outreach formats designed to overcome participation barriers
- Clear information, “de-technicalized” language, analysis provided during engagement events

Targeted outreach, engagement

- We always work to meet communities and community members where they are
- Priority is to focus on communities that:
 - Can be underrepresented in public policy decision making
 - Have resource needs that can be addressed through ARPA money
 - Have been identified by the City as a priority for involvement

Communications



Messaging

- Set expectations from the beginning
 - What we are asking people about
 - What participants can expect by participating
 - What the outcomes of the public process will be
- Coordinate with the City's Communications Department
 - Including the Somerville Office of Immigrant Affairs and Office of Racial and Social Justice

Website/Portal

- Interactive webpage and online portal using OpenGov: Somervillema.gov/ARPA
- Updated often on projects submitted and approved for funding

Office Hours

- Using [Calendly](https://calendly.com), providing three weekly multilingual "office hour" periods at different times to make staff available for questions

Engagement Activities



Community Leader Collaboration and Strategic Partnerships

- Focusing on partnerships and collaboration that can impact and involve aforementioned engagement priorities. Working with Community Leaders on self-directed outreach, communications, and listening.

Focus Groups

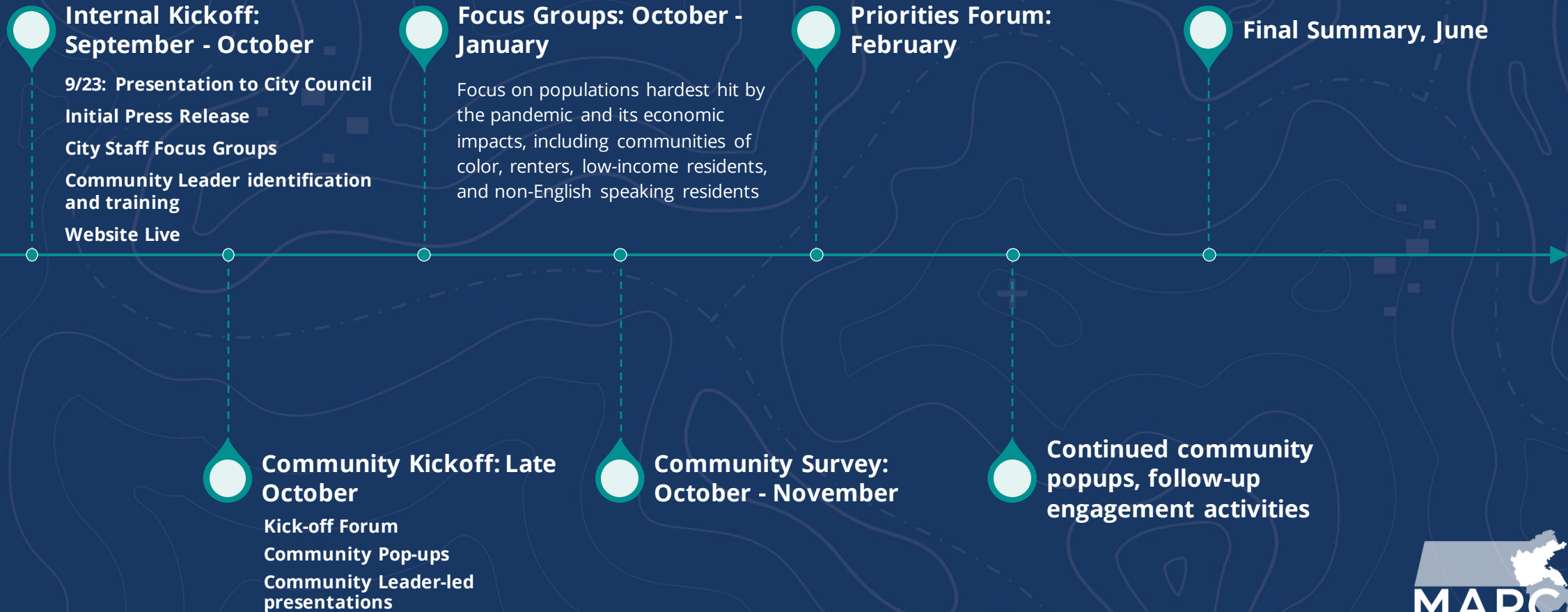
- Focusing on providing spaces to facilitate deeper conversations with important community organizations and stakeholder groups.

Community Priority Survey

Community Forums

- Kickoff Forum: Late October, early November
- Priorities Forum: January

ARPA Community Engagement Timeline (tentative)



Opportunities to be involved

- **Regular newsletters to City Council with ARPA updates**
- **Notification of community events & forums**
- OpenGov Website: [Somervillema.gov/ARPA](https://www.somervillema.gov/ARPA)
- Calend.ly scheduling tool - <https://calendly.com/>

Thank you

Austin Faison

American Rescue Plan Act
Director
afaison@somervillema.gov

Erica Satin-Hernandez

ARPA Specialist
eshernandez@somervillema.gov

Emily Torres-Cullinane

Co-Director of
Strategic Initiatives
etorres@mapc.org

Christian Brandt, AICP

Planner & Community
Engagement Specialist II
cbrandt@mapc.org

Lizzi Weyant

Director Government
Affairs
lweyant@mapc.org