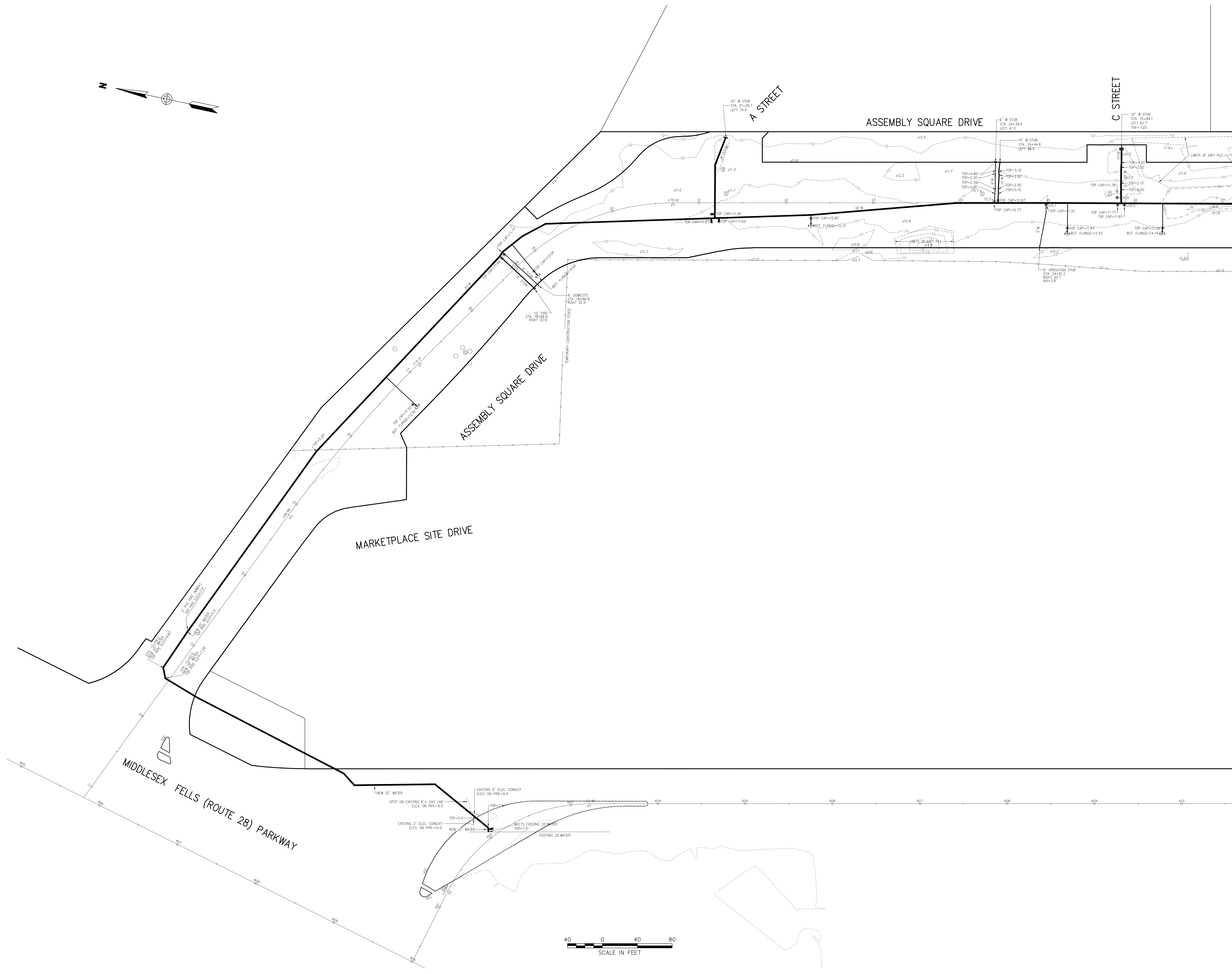
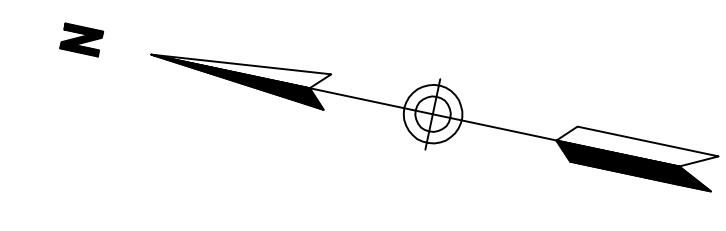




**Vanasse Hangen Brustlin, Inc.**  
 Transportation  
 Land Development  
 Environmental Services  
 101 Walnut Street, P.O. Box 9151  
 Watertown, Massachusetts 02471-9151  
 617 924 1770 • FAX 617 924 2286



**Legend**

- X,XX ELEVATION NOT OBTAINABLE
- DMH
- CB
- SMH
- EMH
- TMH
- MANHOLE
- HH
- HANDHOLE
- WATER GATE
- FIRE HYDRANT
- GAS GATE
- LIGHT POLE
- UTILITY POLE
- GUY WIRE
- GUY POLE
- MONITORING WELL
- EDGE OF PAVEMENT
- CONCRETE CURB
- VERTICAL GRANITE CURB
- SLOPED GRANITE EDGE
- BITUMINOUS BERM
- GUARD RAIL
- CHAIN LINK FENCE
- DRAINAGE LINE
- SEWER LINE
- OVERHEAD WIRE
- UNDERGROUND ELECTRIC
- TELEPHONE LINE
- GAS LINE
- WATER LINE
- R.O.W. LINES

1	edited plan based on peer review comments	5/4/10	bgp
No.	Revision	Date	Prepd.
Designed by	Drawn by	Checked by	
CAD checked by	Approved by		
Scale	1"=40'	Date	January 25, 2010
Project Title			

**Assembly Square Drive**

**Somerville, Massachusetts**  
 Issued for

**Water As-Built Plan of Land**

Drawing Number  
**Sv-1**

Sheet of  
 1 3  
 Project Number  
**10923.00**

