



CITY OF SOMERVILLE

Commonwealth of Massachusetts
93 Highland Avenue
Somerville, MA 02143
(617) 625-6600

BUSINESS LICENSE APPLICATION - Grant of Location

File #: 22-004411

License #: BL22-000028

Address: 71 UNION SQ

Licensee: Hannah Cooper NSTAR Electric Company dba Eversource Energy

DBA Name: NSTAR dba Eversource Energy

Business Ownership Type: Corporation

Legal Name of Entity: NSTAR dba Eversource Energy

Owners/Officers: Joseph R Nolan Jr, , ,

License Information:

Grant of location issued to: NSTAR dba Eversource Energy

Describe the reason for the work, and the intended beneficiaries: This work is necessary to provide electric service to #71 Union Square.

Insert here the same detailed description of the work as appears in the attached Grant of

Location Order: Union Square - Northerly from manhole MH8860, approximately 50 feet north of Somerville Avenue, to private property at #71 Union Square, install approximately 23 feet of conduit.

WO#5162028

Approval Conditions:

Approved By:

Isabela Maia, Approved with Conditions

APPROVAL CONDITION IMM 2022-03-09: Sidewalk panels needs to be restored to the existing conditions.

Malik Drayton, Approved with Conditions

APPROVAL CONDITION: MD20220314: Contractor shall take all necessary precautions to avoid damaging any tree or tree part with equipment.

APPROVAL CONDITION: MD20220314: All nearby street tree(s) shall be protected prior to and during all construction activities using TREE BOX or TREE WRAPS. . TREE BOX shall be constructed from 2 in. x 4 in. lumber creating a box around the border of the tree pit with 2 in. x 4 in. lumber standing straight up at the corners and wrapped with orange snow fence. Detail attached. . TREE WRAPS (TREE TRUNK WRAPPING PROTECTION LUMBER) shall consist of 2 in. x 4 in. and 8 ft. height lumber wired together in close spacing with zip ties or 16 gauge galvanized steel wire to form a protective

enclosure around tree trunks. Use burlap to separate the wood from the bark if necessary to prevent wood from scraping or bruising bark. Do not use staples or puncture the trunk in any way.

APPROVAL CONDITION: MD20220314: Any tree roots less than two (2) inches in diameter that cannot be avoided during construction shall be carefully and cleanly cut with a clean pair of pruning shears or loppers. Roots are to be cut back flush with the edge of the trench. If any tree roots greater than two (2) inches in diameter are encountered, stop work immediately and contact the City Urban Forester. Any and all pruning of roots greater than 2 inches in diameter must be completed under the supervision of the City Urban Forester.

Eric Weisman, Approved

Kimberly M. Wells, Approved

EVERSOURCE
101 Linwood Street
Somerville, MA 02143

March 3rd, 2022

Ms. Kimberly Wells
Office of the City Clerk
93 Highland Avenue
Somerville, MA 02143

RE: Union Square
W.O. #5162028

Dear Members of the Board,

The NSTAR Electric Company d/b/a Eversource Energy respectfully requests a Grant of Location for the installation of approximately 23 feet of conduit in Union Square, from manhole MH8860.

This work is necessary to supply power to #71 Union Square.

If you have any questions or concerns, please call Jacqueline Duffy at 617-629-3204.

Very truly yours,

Kelly-Ann Correia

Kelly-Ann Correia
Supervisor, Rights and Permits



CITY OF SOMERVILLE, MASSACHUSETTS
CITY CLERK'S OFFICE
KATJANA BALLANTYNE
MAYOR

KIMBERLY M. WELLS
CITY CLERK

March 15, 2022

NOTICE OF PUBLIC HEARING

You are hereby notified that the Somerville City Council will hold a Public Hearing on the following Petition. You are receiving this Notice because the Petitioner has reported that you own property that abuts the work that is being proposed. You and other members of the public are invited to attend and be heard at this Hearing.

You have three ways to be heard at this meeting:

1. You may testify remotely by entering the link exactly as it appears below into your internet browser any time before the meeting. You will then be asked to register for the meeting. After registering, you will receive an email with instructions to join the webinar when it starts.
2. You may also testify in person in the City Council Chamber, City Hall, 2nd Floor, 93 Highland Avenue, Somerville, MA 02143
3. If you are unable to attend but wish to be heard, you may send written comments by US mail to the City Clerk at the address below, or by email to cityclerk@somervillema.gov. Your comments must arrive no later than 12 Noon on the day of the Hearing, in order to be sure they are conveyed to the Council.

PETITION: Eversource (Nstar Electric) is applying for a Grant of Location to install 23 feet of conduit in the intersection of Somerville Avenue and Washington Street, from Manhole 8860 to a point of pickup at 71 Union Square.

PLACE: <https://attendee.gotowebinar.com/register/2318859449585755664> or
City Council Chambers, City Hall, 2nd Floor, 93 Highland Avenue, Somerville, MA 02143

TIME: Thursday, March 24, 2022, at 7:00 PM.

PURPOSE: The work is necessary to provide service to 71 Union Square.

W.O. 5162028

WASHINGTON ST

73/ E/ 27/ 101
66 UNION SQUARE PLAZA
SOMERVILLE, MA
N/F

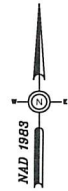
APPROX. PT.
OF PICKUP

73/ E/ 26
71 UNION
SQ SOMERVILLE, MA
N/F
PRADHAN LAXMI N
TRSTEE

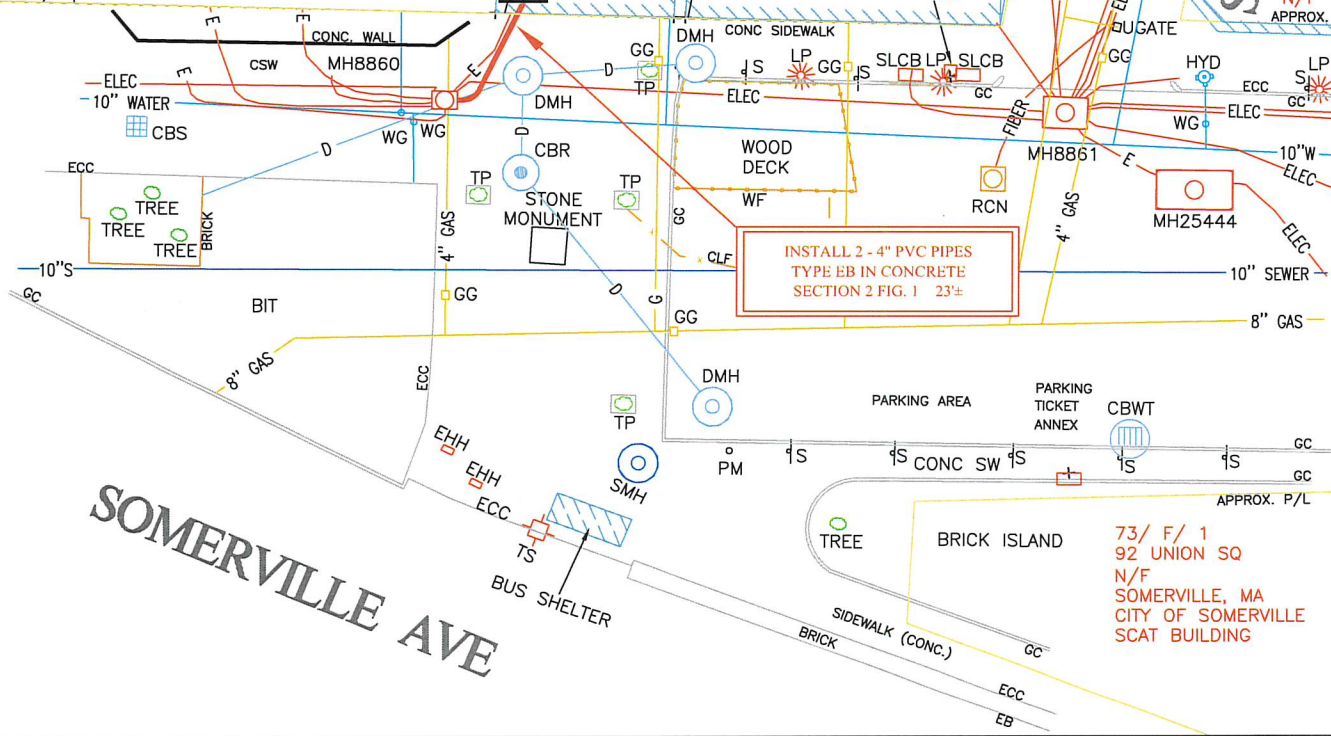
73/ E/ 25
76 UNION SQ
SOMERVILLE, MA
N/F
TRUST THE INDEPENDENT
REALTY

SANDBORN ST

73/ E/ 24
WASHINGTON ST
SOMERVILLE, MA
N/F
APPROX. P/L



APPROX. P/L



INSTALL 2 - 4" PVC PIPES
TYPE EB IN CONCRETE
SECTION 2 FIG. 1 23±

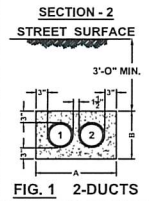
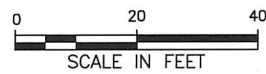


FIG. 1 2-DUCTS

FIG	DIMENSIONS			
	4" Duct	5" Duct	6" Duct	8" Duct
1A	10'-0"	10'-0"	11'-0"	12'-0"
1	10'-0"	10'-0"	11'-0"	12'-0"
2	22'-0"	22'-0"	22'-0"	22'-0"
3	22'-0"	22'-0"	22'-0"	22'-0"
4	22'-0"	22'-0"	22'-0"	22'-0"
5	22'-0"	22'-0"	22'-0"	22'-0"
6	22'-0"	22'-0"	22'-0"	22'-0"
7	22'-0"	22'-0"	22'-0"	22'-0"
8	22'-0"	22'-0"	22'-0"	22'-0"
9	22'-0"	22'-0"	22'-0"	22'-0"
10	22'-0"	22'-0"	22'-0"	22'-0"
11	22'-0"	22'-0"	22'-0"	22'-0"
12	22'-0"	22'-0"	22'-0"	22'-0"
13	22'-0"	22'-0"	22'-0"	22'-0"
14	22'-0"	22'-0"	22'-0"	22'-0"
15	22'-0"	22'-0"	22'-0"	22'-0"
16	22'-0"	22'-0"	22'-0"	22'-0"

SOMERVILLE AVE

73/ F/ 1
92 UNION SQ
SOMERVILLE, MA
CITY OF SOMERVILLE
SCAT BUILDING



BY YOUR USE OF THE INFORMATION CONTAINED IN THIS MAP, YOU AGREE THAT NO WARRANTY OF ANY KIND, EXPRESS OR IMPLIED, IS GIVEN WITH RESPECT TO THE INFORMATION. NEITHER NSIAR ELECTRIC COMPANY, NSIAR GAS COMPANY NOR ITS PARTNERS, AFFILIATES, OFFICIALS, DIRECTORS, SHAREHOLDERS, EMPLOYEES OR AGENTS, COLLECTIVELY THE "FIRM", SHALL BE LIABLE FOR ANY LOSS OR INJURY CAUSED IN WHOLE OR IN PART BY USE OF THIS INFORMATION, OR IN RELIANCE UPON IT, TO THE MAXIMUM EXTENT ALLOWED BY LAW. YOU AGREE BY YOUR ACCEPTANCE OF THE INFORMATION TO RELEASE, INDEMNIFY AND HOLD THE FIRM HARMLESS FROM ANY SUCH LOSS OR INJURY.

THE INFORMATION MAY NOT REPRESENT A SURVEY, MAY NOT BE THE MOST COMPLETE AND IS SUBJECT TO CHANGE WITHOUT NOTICE. NO LIABILITY IS ASSUMED FOR THE ACCURACY OF THE INFORMATION, EITHER EXPRESSED OR IMPLIED. UNAUTHORIZED ATTEMPTS TO MODIFY THE INFORMATION OR USE THE INFORMATION FOR OTHER THAN ITS INTENDED PURPOSES ARE PROHIBITED.

MASS. LAW
REQUIRES 72 HOURS ADVANCE NOTICE TO UTILITY COMPANIES
BEFORE DIGGING BY ANYONE. CALL DIG-SAFE 1-888-344-7233

C# 51-53
Ward #
Work Order # 5162028
Surveyed by: GR/SJ
Research by: JC
Plotted by: LM
Proposed Structures: LM
Approved: T THIBAUT
P#

EVERSOURCE

1165 MASSACHUSETTS AVE. DORCHESTER, MASS. 02125

Plan of UNION SQ	SOMERVILLE
Showing PROPOSED CONDUIT LOCATION	
Scale 1"=20'	Date MARCH 3, 2022
SHEET 1 of 1	

Location:
73/ E/ 25/ /
76 UNION SQ
Owner:
TRUST THE INDEPENDENT REALTY
KELLY KENNETH K TRSTE
41 MYOPIA RD C/O KIM ROOP
WINCHESTER, MA 01890

Location:
73/ E/ 27/ 102/
66 UNION SQUARE PLAZA
Owner:
SELECT DEVELOPMENT CORPORATION
DON WARNER
45 WILLOW CRESCENT
BROOKLINE, MA 02445

Location:
73/ E/ 27/ 105/
66 UNION SQUARE PLAZA
Owner:
SELECT DEVELOPMENT CORPORATION
DON WARNER
45 WILLOW CRESCENT
BROOKLINE, MA 02445

Location:
73/ E/ 27/ 203/
66 UNION SQUARE PLAZA
Owner:
SELECT DEVELOPMENT CORPORATION
DON WARNER
45 WILLOW CRESCENT
BROOKLINE, MA 02445

Location:
73/ E/ 27/ 302/
66 UNION SQUARE PLAZA
Owner:
SELECT DEVELOPMENT CORPORATION
DON WARNER
45 WILLOW CRESCENT
BROOKLINE, MA 02445

Location:
73/ E/ 27/ P01/
66 UNION SQUARE PLAZA
Owner:
SELECT DEVELOPMENT CORPORATION
DON WARNER
45 WILLOW CRESCENT
BROOKLINE, MA 02445

Location:
73/ E/ 26/ /
71 UNION SQ
Owner:
PRADHAN LAXMI N TRSTEE
EVEREST REALTY TRUST
8 CURTIS ST
SOMERVILLE, MA 02144

Location:
73/ E/ 27/ 103/
66 UNION SQUARE PLAZA
Owner:
SELECT DEVELOPMENT CORPORATION
DON WARNER
45 WILLOW CRESCENT
BROOKLINE, MA 02445

Location:
73/ E/ 27/ 201/
66 UNION SQUARE PLAZA
Owner:
SELECT DEVELOPMENT CORPORATION
DON WARNER
45 WILLOW CRESCENT
BROOKLINE, MA 02445

Location:
73/ E/ 27/ 204/
66 UNION SQUARE PLAZA
Owner:
SELECT DEVELOPMENT CORPORATION
DON WARNER
45 WILLOW CRESCENT
BROOKLINE, MA 02445

Location:
73/ E/ 27/ G01/
66 UNION SQUARE PLAZA
Owner:
SELECT DEVELOPMENT CORPORATION
DON WARNER
45 WILLOW CRESCENT
BROOKLINE, MA 02445

Location:
73/ E/ 27/ 101/
66 UNION SQUARE PLAZA
Owner:
SELECT DEVELOPMENT
CORPORATION
DON WARNER
45 WILLOW CRESCENT
BROOKLINE, MA 02445

Location:
73/ E/ 27/ 104/
66 UNION SQUARE PLAZA
Owner:
SELECT DEVELOPMENT
CORPORATION
DON WARNER
45 WILLOW CRESCENT
BROOKLINE, MA 02445

Location:
73/ E/ 27/ 202/
66 UNION SQUARE PLAZA
Owner:
SELECT DEVELOPMENT
CORPORATION
DON WARNER
45 WILLOW CRESCENT
BROOKLINE, MA 02445

Location:
73/ E/ 27/ 301/
66 UNION SQUARE PLAZA
Owner:
SELECT DEVELOPMENT
CORPORATION
DON WARNER
45 WILLOW CRESCENT
BROOKLINE, MA 02445

Location:
73/ E/ 27/ G02/
66 UNION SQUARE PLAZA
Owner:
SELECT DEVELOPMENT
CORPORATION
DON WARNER
45 WILLOW CRESCENT
BROOKLINE, MA 02445