

MAILED TO  
3 ABUTTERS  
2 ALDERMEN  
1 NSTAR



CITY OF SOMERVILLE, MASSACHUSETTS  
CITY CLERK'S OFFICE  
JOSEPH A. CURTATONE  
MAYOR

JOHN J. LONG  
CITY CLERK

July 2, 2014

**NOTICE**

You are hereby notified that the Board of Aldermen will hold a Public Hearing on the following Petition. You are receiving this Notice because City records indicate that you own property that abuts the work that is being proposed. You and other members of the public are invited to attend and be heard at this Hearing.

**PETITION:** NStar Electric for a Grant of Location to install 8 feet of conduit in the sidewalk at the intersection of School Street and Richdale Avenue, southerly from Pole 298/0 to a point of pickup at 170 School Street.

**PLACE:** Aldermanic Chambers, 2<sup>nd</sup> Floor, City Hall, 93 Highland Avenue, Somerville.

**TIME:** Thursday, July 10, 2014, at 7:00 PM.

**PURPOSE:** The work is necessary to provide service at 170 School Street.

John J. Long  
City Clerk

W.O. #1996698



CITY OF SOMERVILLE, MASSACHUSETTS

DEPARTMENT OF PUBLIC WORKS

JOSEPH A. CURTATONE  
MAYOR

**STAN KOTY**  
*Commissioner*

**RICK WILLETTE**  
*Director of Operations*

June 30<sup>th</sup>, 2014

The Honorable Board of Aldermen  
City Hall  
93 Highland Avenue  
Somerville MA, 02143

**RE: Grant of Location**  
**NSTAR Electric Co.**  
**170 School Street**  
**W.O. #1996698**


Dear Board Members:

Preliminary approval is recommended for the petition and plan of NSTAR Electric to install approximately eight feet (8') of conduit in the sidewalk at the intersection of School Street and Richdale Avenue, southerly from Pole 298/0 to point of pick up at 170 School Street, Somerville, MA.

This recommendation is made with reference to NSTAR Electric's letter of June 17, 2014 and plan of June 11, 2014 upon stipulation that the Grant of Location is subject to: a reservation of rescission by the Board of Aldermen; indemnification of the City for all liability arising from said Grant; all permit procedures, conditions and approvals of municipal utilities; protection of existing infrastructure; and complete surface repair, restoration and maintenance. A public hearing will be required.

This work is necessary in order to provide electric service to 170 School Street, Somerville, MA.

Respectfully requested,  
Department of Public Works

  
Stan Koty, Commissioner



101 Linwood Street  
Somerville, MA 02143

2014 JUN 30 P 3:15

CITY CLERK'S OFFICE  
SOMERVILLE, MA

June 17, 2014

John Long  
Office of the City Clerk  
93 Highland Avenue  
Somerville, MA 02143

Re: 170 School St  
Somerville  
W.O. #1996698

Dear Sir:

The NSTAR Electric Company respectfully requests a Grant of Location to install approximately eight (8) feet of conduit in School Street, Somerville, MA.

This work is necessary in order to provide electric service to 170 School Street, Somerville, MA.

Thank you for your prompt attention to this request. If you have any questions, please call Jacqueline Duffy, Right of Way Agent, 617-369-5509.

Very truly yours,

A handwritten signature in dark ink, appearing to read "Richard M. Schifone". The signature is fluid and cursive.

Richard M. Schifone,  
Supervisor

RS/jd

cc: Highway Department  
Engineering Department

ORDER FOR LOCATION FOR CONDUITS AND MANHOLES

City of Somerville Massachusetts,

June 17, 2014

In Board of Aldermen

WHEREAS, NSTAR ELECTRIC COMPANY has petitioned for permission to construct a line for the transmission of electricity for lighting, heating, or power under the public way or ways of the City hereinafter specified, and notice has been given and a hearing held on said petition as provided by law.

It is ORDERED that NSTAR ELECTRIC COMPANY be and hereby is granted permission to construct, and a location for, such a line of conduits and manholes with the necessary wires and cables therein under the following public way or ways of said City:

**School Street – Southerly from Pole#298/0@ the intersection of Richdale Ave-installing approximately 8 feet - conduit**

**W.O.#01996698**

All construction work under this Order shall be in accordance with the following conditions:

1. Conduits and manholes shall be located as shown on made by A DeBenedictis a sketch dated June 11, 2014.
2. Said Company shall comply with the requirements of existing ordinances and such as may hereafter be adopted governing the construction and maintenance of conduits and manholes.
3. All work shall be done to satisfaction of the Board of Aldermen or such officer or officers as it may appoint to supervise the work.

A True Record.

Attest: \_\_\_\_\_  
City Clerk

Approved \_\_\_\_\_ 2014

\_\_\_\_\_  
Mayor

**CERTIFICATE**

I hereby certify that the foregoing Order was adopted after due notice and public hearing as prescribed by Section 22 of Chapter 166 of the General Laws (Ter. Ed.) and any additions thereto or amendments thereof, to wit:--after written notice of the time and place of the hearing mailed at least seven days prior to the date of the hearing by the City Clerk to all owners of real estate abutting upon that part of the way or ways upon, along or across which the line is to be constructed under said Order, as determined by the last preceding assessment for taxation and a public hearing held on the \_\_\_\_\_ day of \_\_\_\_\_, 2014 at \_\_\_\_\_ in the said City.

Attest: \_\_\_\_\_  
City Clerk

**CERTIFICATE**

I hereby certify that the foregoing are true copies of the Order of the Board of Aldermen of the City of Somerville Massachusetts, duly adopted on the \_\_\_\_\_ day of \_\_\_\_\_, 2014 and recorded with the records of location Orders of Said City. \_\_\_\_\_, Book \_\_\_\_\_ Page \_\_\_\_\_ and of the certificate of notice of hearing thereon required by Section 22 of Chapter 166 of the General Laws (Ter. Ed.), and any additions thereto or amendments thereof, as the same appear of record.

Attest: \_\_\_\_\_  
Clerk of City of Somerville, Massachusetts

**PETITION OF NSTAR ELECTRIC COMPANY FOR LOCATION FOR  
CONDUITS AND MANHOLES**

To the **Board of Alderman**

City of **Somerville** Massachusetts

Respectfully represents NSTAR ELECTRIC COMPANY, a company incorporated for the transmission of electricity for lighting, heating or power, that it desires to construct a line for such transmission under the public way or ways hereinafter specified.

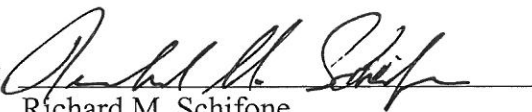
WHEREFORE, your petitioner prays that, after due notice and hearing as provided by law, the Board may by Order grant to your petitioner permission to construct, and a location for, such a line of conduits and manholes with the necessary wires and cables therein, said conduits and manholes to be located substantially as shown on the sketch made by **A DeBenedictis** dated **June 11, 2014**, and filed herewith, under the following public way or ways of said City:

**School Street – Southerly from Pole#298/0@ the intersection of Richdale Ave-installing approximately 8 feet - conduit**

**W.O.#01996698**

**NSTAR ELECTRIC COMPANY**

By:



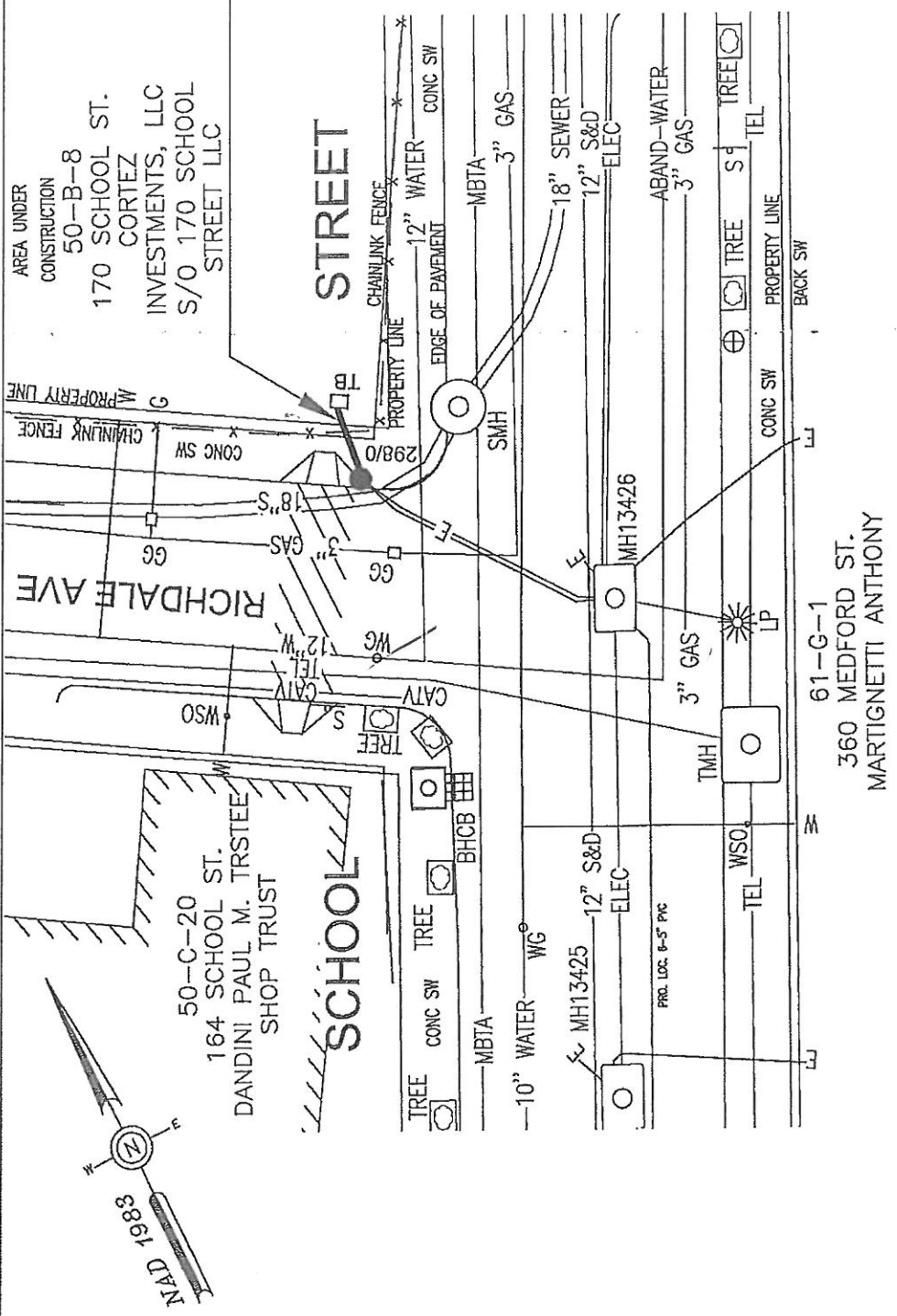
Richard M. Schifone

Rights and Permits Supervisor

Dated this **17<sup>th</sup>** day of **June**, 2014

City of **Somerville**, Massachusetts

Received and filed \_\_\_\_\_, 2014



8.0"±  
INSTALL 1 - 4" PVC PIPES  
SCHEDULE 40  
NO CONCRETE

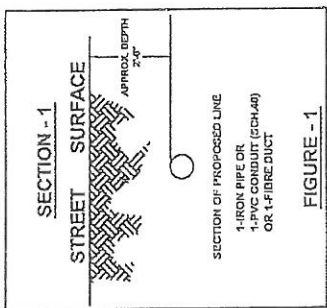


FIGURE - 1

P.C.	DIMENSIONS				U. DATA			
	A	B	C	D	A	B	C	D
1	10'-0"	10'-0"	10'-0"	11'-0"	11'-0"	11'-0"	11'-0"	11'-0"
2	10'-0"	10'-0"	10'-0"	11'-0"	11'-0"	11'-0"	11'-0"	11'-0"
3	10'-0"	10'-0"	10'-0"	11'-0"	11'-0"	11'-0"	11'-0"	11'-0"
4	10'-0"	10'-0"	10'-0"	11'-0"	11'-0"	11'-0"	11'-0"	11'-0"
5	10'-0"	10'-0"	10'-0"	11'-0"	11'-0"	11'-0"	11'-0"	11'-0"
6	10'-0"	10'-0"	10'-0"	11'-0"	11'-0"	11'-0"	11'-0"	11'-0"
7	10'-0"	10'-0"	10'-0"	11'-0"	11'-0"	11'-0"	11'-0"	11'-0"
8	10'-0"	10'-0"	10'-0"	11'-0"	11'-0"	11'-0"	11'-0"	11'-0"
9	10'-0"	10'-0"	10'-0"	11'-0"	11'-0"	11'-0"	11'-0"	11'-0"
10	10'-0"	10'-0"	10'-0"	11'-0"	11'-0"	11'-0"	11'-0"	11'-0"
11	10'-0"	10'-0"	10'-0"	11'-0"	11'-0"	11'-0"	11'-0"	11'-0"
12	10'-0"	10'-0"	10'-0"	11'-0"	11'-0"	11'-0"	11'-0"	11'-0"
13	10'-0"	10'-0"	10'-0"	11'-0"	11'-0"	11'-0"	11'-0"	11'-0"
14	10'-0"	10'-0"	10'-0"	11'-0"	11'-0"	11'-0"	11'-0"	11'-0"
15	10'-0"	10'-0"	10'-0"	11'-0"	11'-0"	11'-0"	11'-0"	11'-0"
16	10'-0"	10'-0"	10'-0"	11'-0"	11'-0"	11'-0"	11'-0"	11'-0"
17	10'-0"	10'-0"	10'-0"	11'-0"	11'-0"	11'-0"	11'-0"	11'-0"
18	10'-0"	10'-0"	10'-0"	11'-0"	11'-0"	11'-0"	11'-0"	11'-0"
19	10'-0"	10'-0"	10'-0"	11'-0"	11'-0"	11'-0"	11'-0"	11'-0"
20	10'-0"	10'-0"	10'-0"	11'-0"	11'-0"	11'-0"	11'-0"	11'-0"
21	10'-0"	10'-0"	10'-0"	11'-0"	11'-0"	11'-0"	11'-0"	11'-0"
22	10'-0"	10'-0"	10'-0"	11'-0"	11'-0"	11'-0"	11'-0"	11'-0"
23	10'-0"	10'-0"	10'-0"	11'-0"	11'-0"	11'-0"	11'-0"	11'-0"
24	10'-0"	10'-0"	10'-0"	11'-0"	11'-0"	11'-0"	11'-0"	11'-0"
25	10'-0"	10'-0"	10'-0"	11'-0"	11'-0"	11'-0"	11'-0"	11'-0"
26	10'-0"	10'-0"	10'-0"	11'-0"	11'-0"	11'-0"	11'-0"	11'-0"
27	10'-0"	10'-0"	10'-0"	11'-0"	11'-0"	11'-0"	11'-0"	11'-0"
28	10'-0"	10'-0"	10'-0"	11'-0"	11'-0"	11'-0"	11'-0"	11'-0"
29	10'-0"	10'-0"	10'-0"	11'-0"	11'-0"	11'-0"	11'-0"	11'-0"
30	10'-0"	10'-0"	10'-0"	11'-0"	11'-0"	11'-0"	11'-0"	11'-0"
31	10'-0"	10'-0"	10'-0"	11'-0"	11'-0"	11'-0"	11'-0"	11'-0"
32	10'-0"	10'-0"	10'-0"	11'-0"	11'-0"	11'-0"	11'-0"	11'-0"
33	10'-0"	10'-0"	10'-0"	11'-0"	11'-0"	11'-0"	11'-0"	11'-0"
34	10'-0"	10'-0"	10'-0"	11'-0"	11'-0"	11'-0"	11'-0"	11'-0"
35	10'-0"	10'-0"	10'-0"	11'-0"	11'-0"	11'-0"	11'-0"	11'-0"
36	10'-0"	10'-0"	10'-0"	11'-0"	11'-0"	11'-0"	11'-0"	11'-0"
37	10'-0"	10'-0"	10'-0"	11'-0"	11'-0"	11'-0"	11'-0"	11'-0"
38	10'-0"	10'-0"	10'-0"	11'-0"	11'-0"	11'-0"	11'-0"	11'-0"
39	10'-0"	10'-0"	10'-0"	11'-0"	11'-0"	11'-0"	11'-0"	11'-0"
40	10'-0"	10'-0"	10'-0"	11'-0"	11'-0"	11'-0"	11'-0"	11'-0"
41	10'-0"	10'-0"	10'-0"	11'-0"	11'-0"	11'-0"	11'-0"	11'-0"
42	10'-0"	10'-0"	10'-0"	11'-0"	11'-0"	11'-0"	11'-0"	11'-0"
43	10'-0"	10'-0"	10'-0"	11'-0"	11'-0"	11'-0"	11'-0"	11'-0"
44	10'-0"	10'-0"	10'-0"	11'-0"	11'-0"	11'-0"	11'-0"	11'-0"
45	10'-0"	10'-0"	10'-0"	11'-0"	11'-0"	11'-0"	11'-0"	11'-0"
46	10'-0"	10'-0"	10'-0"	11'-0"	11'-0"	11'-0"	11'-0"	11'-0"
47	10'-0"	10'-0"	10'-0"	11'-0"	11'-0"	11'-0"	11'-0"	11'-0"
48	10'-0"	10'-0"	10'-0"	11'-0"	11'-0"	11'-0"	11'-0"	11'-0"
49	10'-0"	10'-0"	10'-0"	11'-0"	11'-0"	11'-0"	11'-0"	11'-0"
50	10'-0"	10'-0"	10'-0"	11'-0"	11'-0"	11'-0"	11'-0"	11'-0"
51	10'-0"	10'-0"	10'-0"	11'-0"	11'-0"	11'-0"	11'-0"	11'-0"
52	10'-0"	10'-0"	10'-0"	11'-0"	11'-0"	11'-0"	11'-0"	11'-0"
53	10'-0"	10'-0"	10'-0"	11'-0"	11'-0"	11'-0"	11'-0"	11'-0"
54	10'-0"	10'-0"	10'-0"	11'-0"	11'-0"	11'-0"	11'-0"	11'-0"
55	10'-0"	10'-0"	10'-0"	11'-0"	11'-0"	11'-0"	11'-0"	11'-0"
56	10'-0"	10'-0"	10'-0"	11'-0"	11'-0"	11'-0"	11'-0"	11'-0"
57	10'-0"	10'-0"	10'-0"	11'-0"	11'-0"	11'-0"	11'-0"	11'-0"
58	10'-0"	10'-0"	10'-0"	11'-0"	11'-0"	11'-0"	11'-0"	11'-0"
59	10'-0"	10'-0"	10'-0"	11'-0"	11'-0"	11'-0"	11'-0"	11'-0"
60	10'-0"	10'-0"	10'-0"	11'-0"	11'-0"	11'-0"	11'-0"	11'-0"
61	10'-0"	10'-0"	10'-0"	11'-0"	11'-0"	11'-0"	11'-0"	11'-0"
62	10'-0"	10'-0"	10'-0"	11'-0"	11'-0"	11'-0"	11'-0"	11'-0"
63	10'-0"	10'-0"	10'-0"	11'-0"	11'-0"	11'-0"	11'-0"	11'-0"
64	10'-0"	10'-0"	10'-0"	11'-0"	11'-0"	11'-0"	11'-0"	11'-0"
65	10'-0"	10'-0"	10'-0"	11'-0"	11'-0"	11'-0"	11'-0"	11'-0"
66	10'-0"	10'-0"	10'-0"	11'-0"	11'-0"	11'-0"	11'-0"	11'-0"
67	10'-0"	10'-0"	10'-0"	11'-0"	11'-0"	11'-0"	11'-0"	11'-0"
68	10'-0"	10'-0"	10'-0"	11'-0"	11'-0"	11'-0"	11'-0"	11'-0"
69	10'-0"	10'-0"	10'-0"	11'-0"	11'-0"	11'-0"	11'-0"	11'-0"
70	10'-0"	10'-0"	10'-0"	11'-0"	11'-0"	11'-0"	11'-0"	11'-0"
71	10'-0"	10'-0"	10'-0"	11'-0"	11'-0"	11'-0"	11'-0"	11'-0"
72	10'-0"	10'-0"	10'-0"	11'-0"	11'-0"	11'-0"	11'-0"	11'-0"
73	10'-0"	10'-0"	10'-0"	11'-0"	11'-0"	11'-0"	11'-0"	11'-0"
74	10'-0"	10'-0"	10'-0"	11'-0"	11'-0"	11'-0"	11'-0"	11'-0"
75	10'-0"	10'-0"	10'-0"	11'-0"	11'-0"	11'-0"	11'-0"	11'-0"
76	10'-0"	10'-0"	10'-0"	11'-0"	11'-0"	11'-0"	11'-0"	11'-0"
77	10'-0"	10'-0"	10'-0"	11'-0"	11'-0"	11'-0"	11'-0"	11'-0"
78	10'-0"	10'-0"	10'-0"	11'-0"	11'-0"	11'-0"	11'-0"	11'-0"
79	10'-0"	10'-0"	10'-0"	11'-0"	11'-0"	11'-0"	11'-0"	11'-0"
80	10'-0"	10'-0"	10'-0"	11'-0"	11'-0"	11'-0"	11'-0"	11'-0"
81	10'-0"	10'-0"	10'-0"	11'-0"	11'-0"	11'-0"	11'-0"	11'-0"
82	10'-0"	10'-0"	10'-0"	11'-0"	11'-0"	11'-0"	11'-0"	11'-0"
83	10'-0"	10'-0"	10'-0"	11'-0"	11'-0"	11'-0"	11'-0"	11'-0"
84	10'-0"	10'-0"	10'-0"	11'-0"	11'-0"	11'-0"	11'-0"	11'-0"
85	10'-0"	10'-0"	10'-0"	11'-0"	11'-0"	11'-0"	11'-0"	11'-0"
86	10'-0"	10'-0"	10'-0"	11'-0"	11'-0"	11'-0"	11'-0"	11'-0"
87	10'-0"	10'-0"	10'-0"	11'-0"	11'-0"	11'-0"	11'-0"	11'-0"
88	10'-0"	10'-0"	10'-0"	11'-0"	11'-0"	11'-0"	11'-0"	11'-0"
89	10'-0"	10'-0"	10'-0"	11'-0"	11'-0"	11'-0"	11'-0"	11'-0"
90	10'-0"	10'-0"	10'-0"	11'-0"	11'-0"	11'-0"	11'-0"	11'-0"
91	10'-0"	10'-0"	10'-0"	11'-0"	11'-0"	11'-0"	11'-0"	11'-0"
92	10'-0"	10'-0"	10'-0"	11'-0"	11'-0"	11'-0"	11'-0"	11'-0"
93	10'-0"	10'-0"	10'-0"	11'-0"	11'-0"	11'-0"	11'-0"	11'-0"
94	10'-0"	10'-0"	10'-0"	11'-0"	11'-0"	11'-0"	11'-0"	11'-0"
95	10'-0"	10'-0"	10'-0"	11'-0"	11'-0"	11'-0"	11'-0"	11'-0"
96	10'-0"	10'-0"	10'-0"	11'-0"	11'-0"	11'-0"	11'-0"	11'-0"
97	10'-0"	10'-0"	10'-0"	11'-0"	11'-0"	11'-0"	11'-0"	11'-0"
98	10'-0"	10'-0"	10'-0"	11'-0"	11'-0"	11'-0"	11'-0"	11'-0"
99	10'-0"	10'-0"	10'-0"	11'-0"	11'-0"	11'-0"	11'-0"	11'-0"
100	10'-0"	10'-0"	10'-0"	11'-0"	11'-0"	11'-0"	11'-0"	11'-0"

BY YOUR USE OF THE INFORMATION CONTAINED IN THIS MAP, YOU AGREE THAT NO WARRANTY OF ANY KIND, EXPRESS OR IMPLIED, IS MADE WITH RESPECT TO THE INFORMATION. NEITHER NSTAR ELECTRIC COMPANY, NSTAR GAS COMPANY NOR ITS AFFILIATES, AGENTS, OR EMPLOYEES SHALL BE LIABLE FOR ANY INJURY CAUSED IN WHOLE OR IN PART BY USE OF THIS INFORMATION, OR IN RELIANCE UPON IT, TO THE MAXIMUM EXTENT ALLOWED BY LAW. YOU AGREE BY YOUR ACCEPTANCE OF THE INFORMATION TO RELEASE, INDEMNIFY AND HOLD THE NSTAR ENTITIES HARMLESS FROM ANY SUCH LOSS OR INJURY.

THE INFORMATION MAY NOT REPRESENT A SURVEY. IT MAY NOT BE THE MOST COMPLETE AND IS SUBJECT TO THE INFORMATION CONTAINED IN ANY OTHER MAPS OR RECORDS. YOU AGREE TO HOLD THE NSTAR ENTITIES HARMLESS FROM ANY SUCH LOSS OR INJURY.

MASS. LAW  
REQUIRES 72 HOURS ADVANCE NOTICE TO UTILITY COMPANIES BEFORE DIGGING BY ANYONE. CALL DIG-SAFE 1-888-344-7233



A Northeast Utilities Company  
1165 MASSACHUSETTS AVE. DORCHESTER, MASS. 02125

Plan of RICHDALE AVENUE, SOMERVILLE

Showing PROPOSED CONDUIT LOCATION

Scale 1"=20' Date JUNE 11, 2014

SHEET 1 of 1

S:\SHARED\CHARGE\BASELINS\SOM\SCHOOLAC.dwg

W.O. #199698  
SCHOOL STREET  
SOMERVILLE, MA 02145

50-B-8  
170 SCHOOL ST.  
N/F  
CORTEZ INVESTMENTS, LLC  
S/O 170 SCHOOL STREET LLC  
55 HAZEL ST.  
WATERTOWN, MA 02472

50-C-20  
164 SCHOOL ST.  
N/F  
DANDINI PAUL M. TRSTEE  
SHOP TRUST  
2 RICHDALE AVE.  
SOMERVILLE, MA 02145

61-G-1  
360 MEDFORD ST.  
N/F  
MARTIGNETTI ANTHONY  
P.O. BOX 45452  
SOMERVILLE, MA 02145

**Moshe Safdie & Michael Ronnen**  
100 Properzi Way  
Somerville, MA 02143

Jennifer Souza  
2 Eliot Street  
Somerville, MA 02143

Michael & Karen Rigazio  
93 Properzi Way  
Somerville, MA 02143

Elaine Leary  
84 Properzi Way  
Somerville, MA 02143

N Catavolos & T. Bernhardt  
86 Properzi Way  
Somerville, MA 02143

Molly & David Harris-Trustee  
88 Properzie Way  
Somerville, MA 02143

**Cortez Investments, LLC**  
S/O 170 School Street, LLC  
55 Hazel Street  
Watertown, MA 02472

Paul Dandini Trustee/Shop Trust  
2 Richdale Ave  
Somerville, MA 02145

Anthony Martignetti  
P.O. Box 45452  
Somerville, MA 02145

**Broadway Investments Inc.**  
P.O. Box 45626  
Somerville, MA 02145

Carmelia Correia  
137 Cross Street  
Somerville, MA 02145

Adam Katz  
60 Tufts St #2  
Somerville, MA 02143

Azeb Negussie  
143 Cross St #1  
Somerville, MA 02143

Altino & Sonia Serpa  
143 Cross St #2  
Somerville, MA 02145

Bryn Bennett  
143 Cross ST #3  
Somerville, MA 02145

→ 170 SCHOOL ST