

Middlesex Registry of Deeds,
 Southern District
 Cambridge, Massachusetts
 Plan No. 7/1 of 2011
 Rec'd 12-05-2011
 11:43 AM

RESERVED FOR REGISTRY USE ONLY

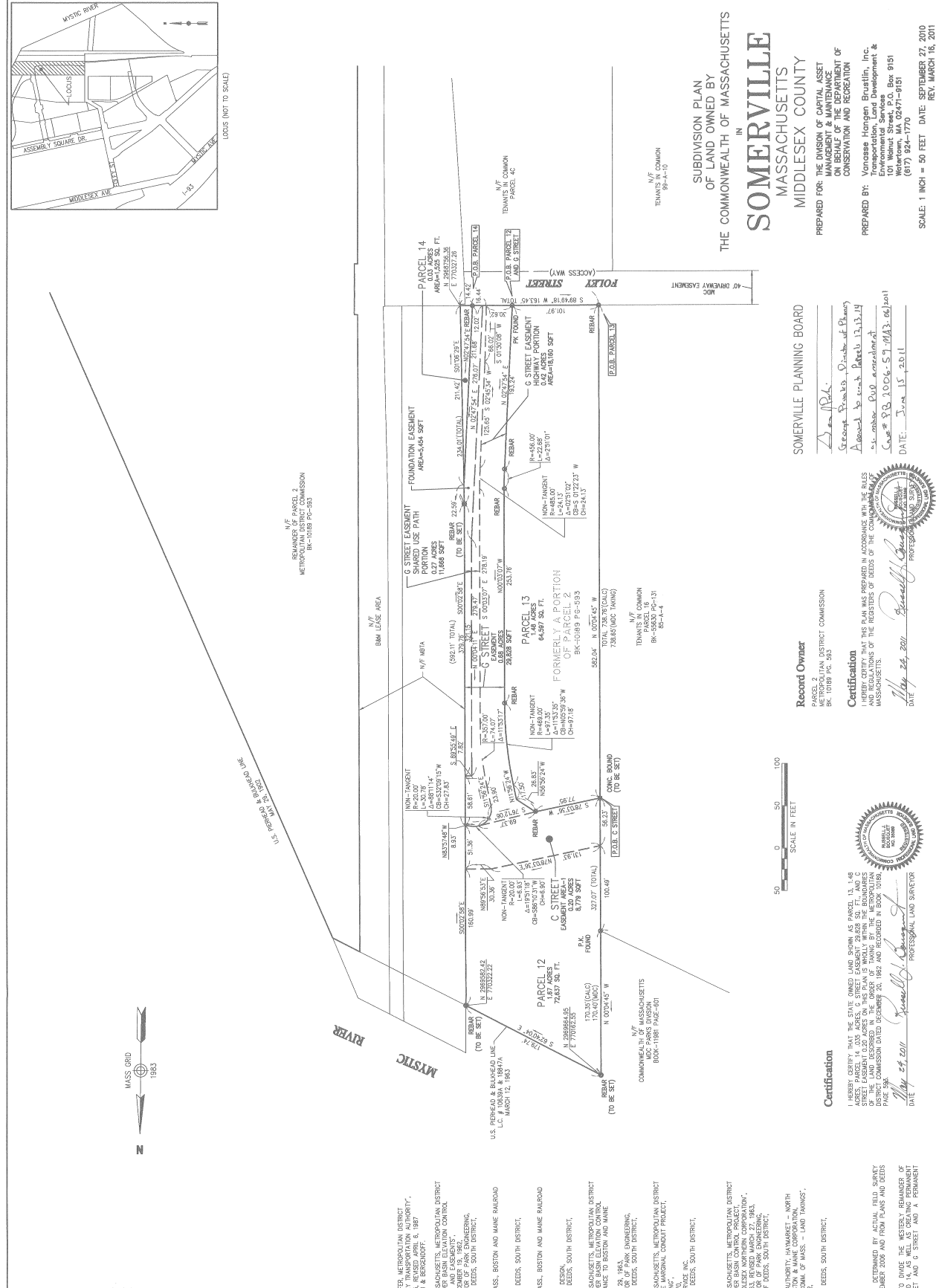
72 # 811 12-05-2011 11:43 AM

Plan References

- 1) PLAN ENTITLED "PROPOSED LAND TRANSFER, METROPOLITAN DISTRICT COMMUNITY DEVELOPMENT PROJECT, METROPOLITAN DISTRICT COMMUNITY DEVELOPMENT PROJECT," SCALE 1"=80'; DATED OCTOBER 17, 1989; REVISED APRIL 6, 1987; PREPARED BY HOWING NEEDLES TAMMEN & BERGENFELD.
- 2) PLAN ENTITLED "COMMONWEALTH OF MASSACHUSETTS, METROPOLITAN DISTRICT COMMUNITY DEVELOPMENT PROJECT, CONTROL PLAN, SOMERVILLE, PLAN OF LOTS AND EASEMENTS," DATED FEBRUARY 26, 1983; PREPARED BY BENJAMIN W. PARK, DIRECTOR OF PARK ENGINEERING, RECORD WITH MIDDLESEX REGISTRY OF DEEDS, SOUTH DISTRICT, PLAN NUMBER 378 OF 1983.
- 3) PLAN ENTITLED "LAND IN SOMERVILLE, MASS., BOSTON AND MAINE RAILROAD U.S. LOC. # 106359 & 108474," MARCH 12, 1983, SCALE 1"=80'; DATED MARCH 1981; PREPARED BY BENJAMIN W. PARK, DIRECTOR OF PARK ENGINEERING, RECORD WITH MIDDLESEX REGISTRY OF DEEDS, SOUTH DISTRICT, PLAN NUMBER 192 OF 1981.
- 4) PLAN ENTITLED "LAND IN SOMERVILLE, MASS., BOSTON AND MAINE RAILROAD TO FIRST NATIONAL STORES, INC.," SCALE 1"=100'; DATED MAY 1982; PREPARED BY BENJAMIN W. PARK, DIRECTOR OF PARK ENGINEERING, RECORD WITH MIDDLESEX REGISTRY OF DEEDS, SOUTH DISTRICT, PLAN NUMBER 74 OF 1981.
- 5) PLAN ENTITLED "COMMONWEALTH OF MASSACHUSETTS, METROPOLITAN DISTRICT COMMUNITY DEVELOPMENT PROJECT, SOMERVILLE, PLAN OF CONFORMANCE TO BOSTON AND MAINE RAILROAD U.S. LOC. # 106359 & 108474," DATED MARCH 12, 1983; REVISED MARCH 29, 1983; PREPARED BY BENJAMIN W. PARK, DIRECTOR OF PARK ENGINEERING, RECORD WITH MIDDLESEX REGISTRY OF DEEDS, SOUTH DISTRICT, PLAN NUMBER 703 OF 1983.
- 6) PLAN ENTITLED "COMMONWEALTH OF MASSACHUSETTS, METROPOLITAN DISTRICT COMMUNITY DEVELOPMENT PROJECT, SOMERVILLE, MARSHALL CONDUIT PROJECT," SCALE 1"=100'; DATED DECEMBER 9, 1970; PREPARED BY BENJAMIN W. PARK, DIRECTOR OF PARK ENGINEERING, RECORD WITH MIDDLESEX REGISTRY OF DEEDS, SOUTH DISTRICT, PLAN NUMBER 312 OF 1971.
- 7) LAND COURT CASE #1947A.
- 8) PLAN ENTITLED "COMMONWEALTH OF MASSACHUSETTS, METROPOLITAN DISTRICT COMMUNITY DEVELOPMENT PROJECT, SOMERVILLE, RIVER BASIN CONTROL PROJECT," SCALE 1"=40'; DATED FEBRUARY 26, 1983; REVISED MARCH 27, 1983; PREPARED BY BENJAMIN W. PARK, DIRECTOR OF PARK ENGINEERING, RECORD WITH MIDDLESEX REGISTRY OF DEEDS, SOUTH DISTRICT, PLAN NUMBER 398 OF 1983.
- 9) MASSACHUSETTS BAY TRANSPORTATION AUTHORITY, HAMMARK - NORTH EXTENSION, CONTRACT NO. BR-300, BOSTON & MAINE CORPORATION, PLAN NO. M-22880 (REV. M-22882), SCALE 1"=100'; DATED MARCH 1970; PREPARED BY BENJAMIN W. PARK, DIRECTOR OF PARK ENGINEERING, RECORD WITH MIDDLESEX REGISTRY OF DEEDS, SOUTH DISTRICT, PLAN NUMBER 237 OF 1974.

General Notes

- 1) CONDUCTED IN PART, BOSTON AREA, SUPERSEDED BY LOCAL FIELD SURVEY CONDUCTED IN APRIL 2009 AND NOVEMBER 2009 FROM PLANS AND DEEDS OF RECORD.
- 2) THE PURPOSE OF THIS PLAN IS TO DUPLICATE THE MISTERY REMAINDER OF HIGHWAY EASEMENTS FOR C STREET AND G STREET AND A PERMANENT FOUNDATION EASEMENT.



SUBDIVISION PLAN
 OF LAND OWNED BY
 THE COMMONWEALTH OF MASSACHUSETTS
SOMERVILLE
 MASSACHUSETTS
 MIDDLESEX COUNTY

PREPARED FOR: THE DIVISION OF CAPITAL ASSET MANAGEMENT & MAINTENANCE, DEPARTMENT OF CONSERVATION AND RECREATION

PREPARED BY: Vonasse Hangen Brattin, Inc., Environmental Services Development & Maintenance, 101 Walnut Street, P.O. Box 9151, Somerville, MA 02145, (617) 924-1770

SCALE: 1 INCH = 80 FEET DATE: SEPTEMBER 27, 2010
 REVISION: 11:43 AM, 12-05-2011

SOMERVILLE PLANNING BOARD

Record Owner
 METROPOLITAN DISTRICT COMMISSION
 BK-10189 PG. 93

Certification

I HEREBY CERTIFY THAT THIS PLAN WAS PREPARED IN ACCORDANCE WITH THE RULES AND REGULATIONS OF THE REGISTRY OF DEEDS OF THE COMMONWEALTH OF MASSACHUSETTS.

Professional Land Surveyor
 David J. ...
 May 24, 2011

