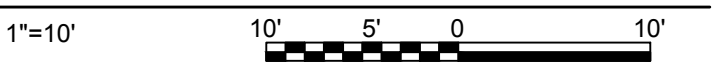


NOTES:

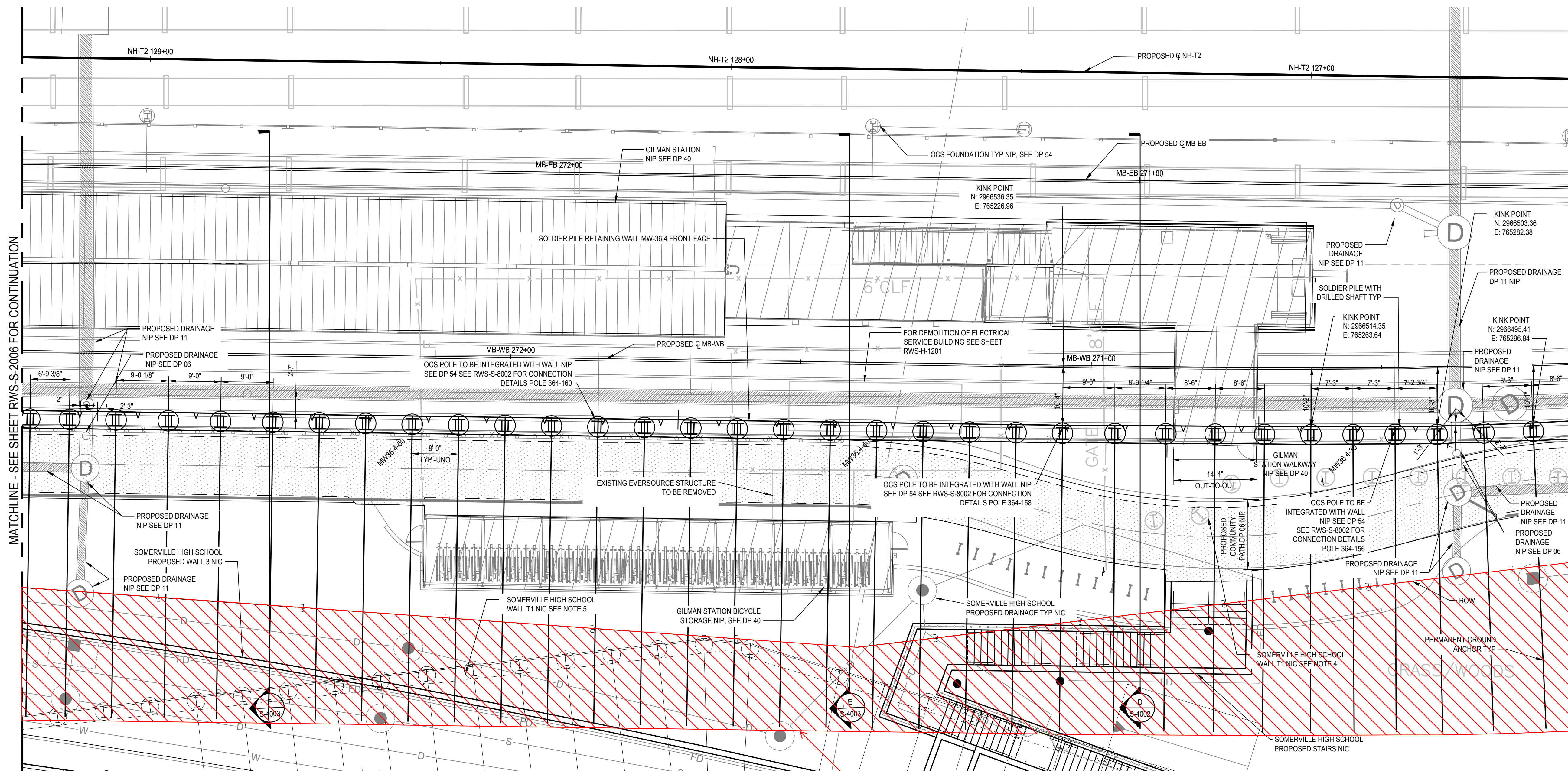
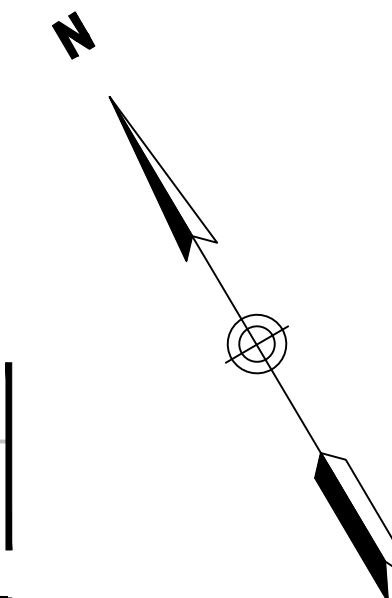
1. SEE SHEETS RWS-G-0501 AND RWS-S-1001 FOR GENERAL NOTES.
2. SEE SHEET RWS-S-3001 FOR RETAINING WALL ELEVATION.
3. SEE SHEETS RWS-S-8001 THRU RWS-S-8003 FOR SOLDIER PILE & LAGGING WALL TYPICAL SECTIONS AND DETAILS.
4. SOMERVILLE HIGH SCHOOL TEMPORARY WALL 2 TO BE REMOVED BY SOMERVILLE HIGH SCHOOL PRIOR TO START OF WALL MW-36.4 CONSTRUCTION.
5. COORDINATE WALL MW-36.4 CONSTRUCTION WITH SOMERVILLE HIGH SCHOOL CONSTRUCTION.
6. ALL OFFSETS SHOWN TO FRONT FACE OF PRECAST PANEL.
7. LOCATE DRILLED SHAFTS INSTALLED AS PART OF GLX EPISODE 1 SOLDIER PILE WALL PRIOR TO INSTALLING PERMANENT ANCHORS. ADJUST ANCHOR ANGLE UP TO 5 DEGREES Laterally TO AVOID DRILLED SHAFTS.
8. COORDINATE OCS POLE LOCATIONS AND DETAILS WITH DP 54.
9. FOR PROPOSED CONTOURS AND FINAL GRADING SEE DP 06.

RETAINING WALL MW-36.4 PLAN



TOTAL SUBSURFACE EASEMENT AREA = 19,400 SF

PLOTTED: 01/01/18 8:58PM BY: KNCV.D.J.
DRAWING: 1 PROJECTS/4019/13/4019139_0001/90_CAD MODELS AND SHEETS/18A RETAINING WALL MW-36.406_S_STRUCTURAL SHEETS/RWS-S-2001.DWG (RWS-S-2001) 12/30/16 6:53PM



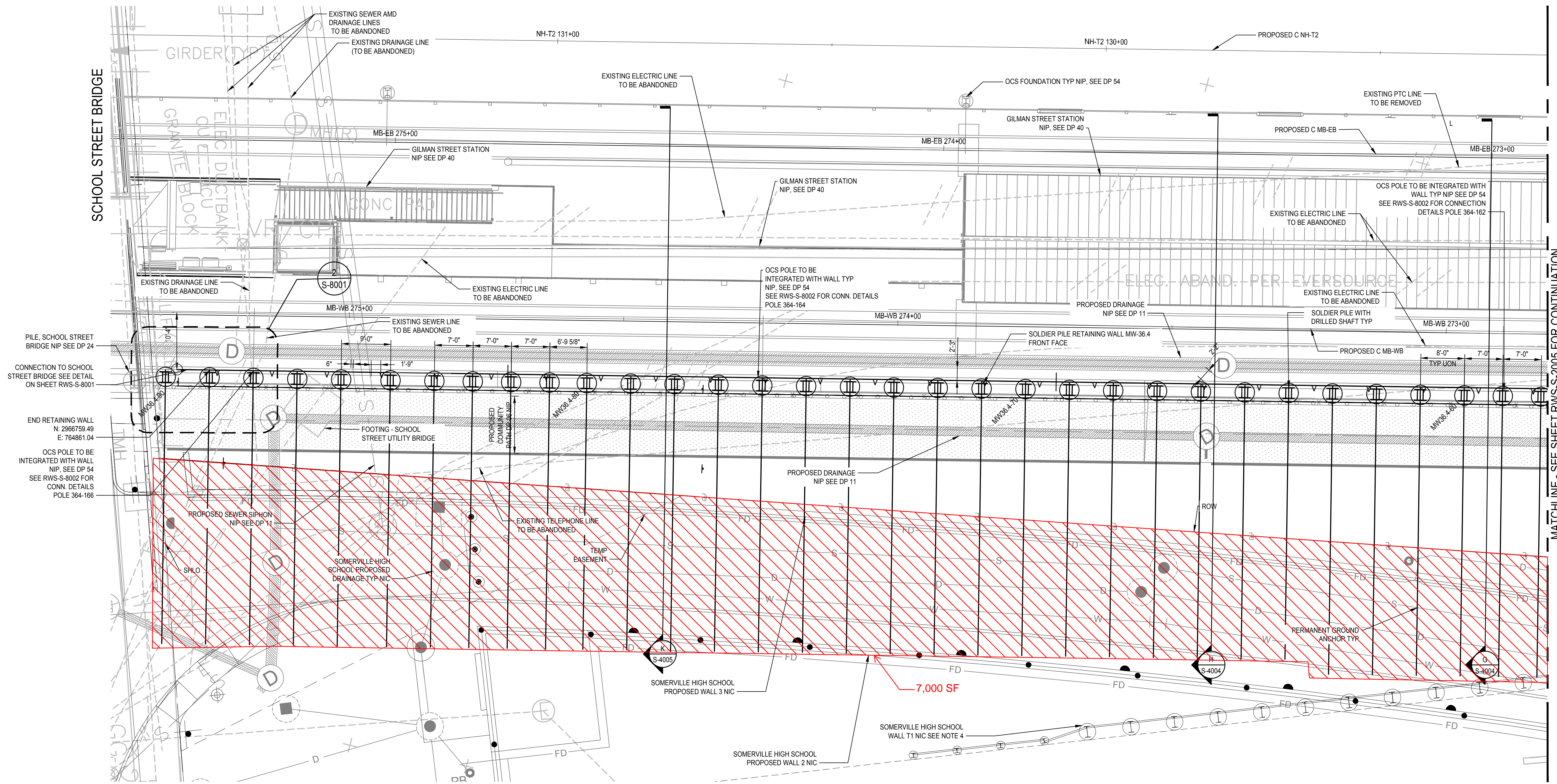
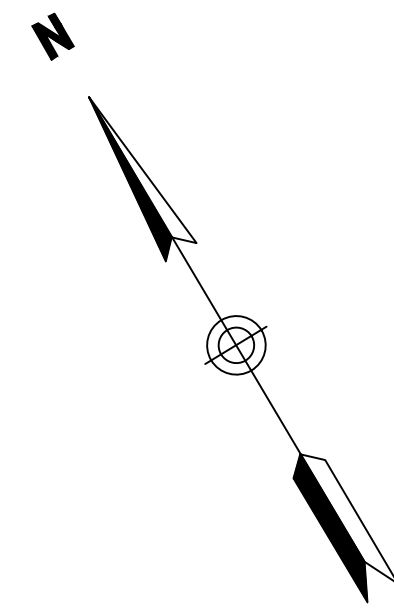
NOTES:

1. SEE SHEETS RWS-G-0501 AND RWS-S-1001 FOR GENERAL NOTES.
2. SEE SHEET RWS-S-3002 FOR RETAINING WALL ELEVATION.
3. SEE SHEETS RWS-S-8001 THRU RWS-S-8003 FOR SOLDIER PILE & LAGGING WALL TYPICAL SECTIONS AND DETAILS.
4. SOMERVILLE HIGH SCHOOL TEMPORARY WALL 2 TO CONSTRUCTED BY SOMERVILLE HIGH SCHOOL AND WILL BE REMOVED BY SOMERVILLE HIGH SCHOOL PRIOR TO START OF WALL MW-36.4 CONSTRUCTION.
5. SOMERVILLE HIGH SCHOOL TEMPORARY WALL 1 TO CONSTRUCTED BY SOMEVILLE HIGH SCHOOL AND WILL BE IN PLACE DURING WALL MW-36.4 CONSTRUCTION.
6. COORDINATE WALL MW-36.4 CONSTRUCTION WITH SOMERVILLE HIGH SCHOOL CONSTRUCTION.
7. ALL OFFSETS SHOWN TO FRONT FACE OF PRECAST PANEL.
8. LOCATE DRILLED SHAFTS FOR GLX SHS TEMPORARY WALL 1 PRIOR TO INSTALLING PERMANENT ANCHORS. ADJUST ANCHOR ANGLE UP TO 5 DEGREES LATERALLY TO AVOID DRILLED SHAFTS.
9. COORDINATE OCS POLE LOCATIONS AND DETAILS WITH DP-54.
10. FOR PROPOSED CONTOURS AND FINAL GRADING SEE DP-06.

RETAINING WALL MW-36.4 PLAN

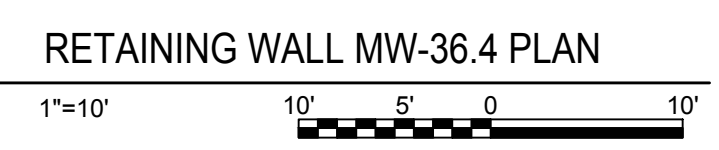


TOTAL SUBSURFACE EASEMENT AREA = 19,400 SF



NOTES:

1. SEE SHEETS RWS-G-0501 AND RWS-S-1001 FOR GENERAL NOTES.
2. SEE SHEET RWS-S-3003 FOR RETAINING WALL ELEVATION.
3. SEE SHEETS RWS-S-8001 THRU RWS-S-8003 FOR SOLDIER PILE & LAGGING WALL TYPICAL SECTIONS AND DETAILS.
4. SOMERVILLE HIGH SCHOOL TEMPORARY WALL 1 TO CONSTRUCTED BY SOMERVILLE HIGH SCHOOL AND WILL BE IN PLACE DURING WALL MW-36.4 CONSTRUCTION.
5. BACKFILL WALL 36.4 AFTER THE DRAINAGE FACILITIES LOCATED IN FRONT HAVE BEEN CONSTRUCTED AND BACKFILLED.
6. ALL OFFSETS SHOWN TO FRONT FACE PRECAST PANEL.
7. COORDINATE OCS POLE LOCATIONS AND DETAILS WITH DP-54.
8. FOR PROPOSED CONTOURS AND FINAL GRADING SEE DP-06.



TOTAL SUBSURFACE EASEMENT AREA = 19,400 SF

PROJECT: 01/19/18 SHS TIEBACKS (RWS-S-2003) 01/01/18 11:12AM
DRAWING: PROJECTS/01/19/18 SHS TIEBACKS (RWS-S-2003) 01/01/18 11:12AM