



CITY OF SOMERVILLE
Commonwealth of Massachusetts
93 Highland Avenue
Somerville, MA 02143
(617) 625-6600

BUSINESS LICENSE APPLICATION - Grant of Location

File #: 21-008934

License #: BL21-000093

Address: 75 PEARL ST

Licensee: Dave Flewelling Comcast of Massachusetts/ New Hampshire, LLC

DBA Name: Comcast Cable Communications Management, LLC

Business Ownership Type: LLC

Legal Name of Entity: Comcast Cable Communications Management, LLC

Owners/Officers: Brian Roberts, Brian Roberts, Brian Roberts, Brian Roberts

License Information:

Grant of location issued to: Comcast Cable Communications Management, LLC

Describe the reason for the work, and the intended beneficiaries: Excavating to install new conduits to provide service connections

Insert here the same detailed description of the work as appears in the attached Grant of

Location Order: Pearl Street: Starting at the existing Comcast Manhole located at number 91 Pearl Street excavating to place (1) 4" PVC Conduit 275'+/_ and (2) 17"x 30" vaults to provide service to number 75-85 Pearl Street.

Approval Conditions:

Approved By:

Karla Cuarezma, Approved

Malik Drayton, Approved with Conditions

APPROVAL CONDITION: MD20210727: Contractor shall take all necessary precautions to avoid damaging any tree or tree part with equipment.

APPROVAL CONDITION: MD20210727: All nearby street tree(s) shall be protected prior to and during all construction activities using TREE BOX or TREE WRAPS. . TREE BOX shall be constructed from 2 in. x 4 in. lumber creating a box around the border of the tree pit with 2 in. x 4 in. lumber standing straight up at the corners and wrapped with orange snow fence. Detail attached. . TREE WRAPS (TREE TRUNK WRAPPING PROTECTION LUMBER) shall consist of 2 in. x 4 in. and 8 ft. height lumber wired together in close spacing with zip ties or 16 gauge galvanized steel wire to form a protective enclosure around tree trunks. Use burlap to separate the wood from the bark if necessary to prevent wood from scraping or bruising bark. Do not use staples or puncture the trunk in any way.

APPROVAL CONDITION: MD20210727: Any tree roots less than two (2) inches in diameter that cannot be avoided during construction shall be carefully and cleanly cut with a clean pair of pruning shears or loppers. Roots are to be cut back flush with the edge of the trench. If any tree roots greater than two (2) inches in diameter are encountered, stop work immediately and contact the City Urban Forester. Any and all pruning of

roots greater than 2 inches in diameter must be completed under the supervision of the City Urban Forester.

Mark Lawhorne, Approved

Kimberly M. Wells, Approved



CITY OF SOMERVILLE, MASSACHUSETTS
CITY CLERK'S OFFICE
JOSEPH A. CURTATONE
MAYOR

KIMBERLY M. WELLS
CITY CLERK

August 31, 2021

NOTICE OF RESCHEDULED PUBLIC HEARING

You are hereby notified that the Somerville City Council will hold a Public Hearing on the following Petition. You are receiving this Notice because the Petitioner has reported that you own property that abuts the work that is being proposed. You and other members of the public are invited to attend and be heard at this Hearing.

Because of Governor Baker's and Mayor Curtatone's recent orders limiting the number of people that may gather in one place, **this meeting of the City Council will be conducted via remote participation, online in a webinar hosted on the GoToWebinar platform.**

You have two ways to be heard at this meeting:

1. To attend and be heard, enter the link exactly as it appears below into your internet browser any time before the meeting. You will then be asked to register for the meeting. After registering, you will receive an email with instructions to join the webinar when it starts.
2. If you are unable to attend but wish to be heard, you may send written comments by US mail to the City Clerk at the address below, or by email to cityclerk@somervillema.gov. Your comments must arrive no later than 12 Noon on the day of the Hearing, in order to be sure they are conveyed to the Council.

PETITION: Comcast seeks a Grant of Location to install a total of 275 feet of conduit in Pearl Street as follows: Starting from a Comcast Manhole, 100 feet to a proposed sidewalk vault. From said vault, 5 feet to a point near 85 Pearl Street and 20 feet to 81 Pearl Street. Continuing along Pearl Street, 75 feet to another proposed sidewalk vault. From said vault, 10 feet to a point near 77 Pearl Street and 65 feet to final point of pickup at 75 Pearl Street.

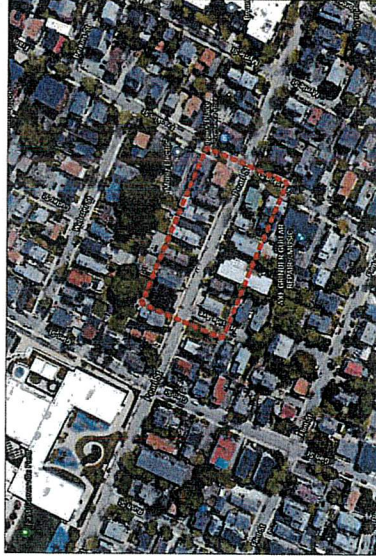
PLACE: <https://attendee.gotowebinar.com/register/5418611422373091596>

TIME: Thursday, September 9, 2021 at 7:00 PM.

PURPOSE: The work is necessary to provide or improve service connections.



PROPOSED CONDUIT INSTALLATION
AT
75 PEARL ST
SOMERVILLE, MA

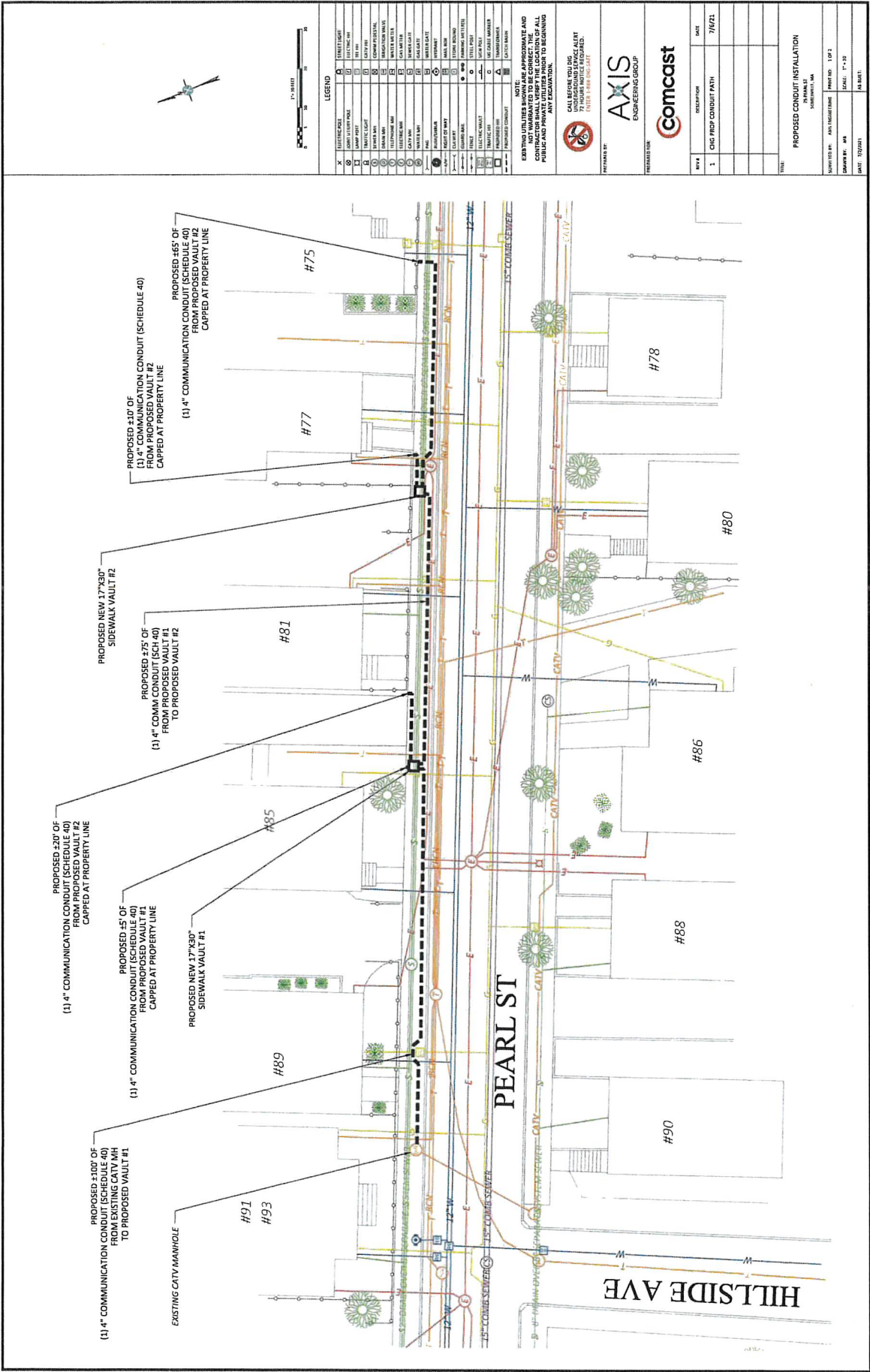


LOCUS
N.T.S

INDEX OF DRAWING

SHEET NO.	DESCRIPTION
01	COVER SHEET
02	PROPOSED CONDUIT INSTALLATION GENERAL NOTES AND DETAILS

AXIS
ENGINEERING GROUP
201 Boston Post Rd West - Suite 100
Marlborough, MA 01752
(774) 558-2824 www.axisgroup.com



LEGEND

1	STREET LIGHT
2	STREET LIGHT
3	STREET LIGHT
4	STREET LIGHT
5	STREET LIGHT
6	STREET LIGHT
7	STREET LIGHT
8	STREET LIGHT
9	STREET LIGHT
10	STREET LIGHT
11	STREET LIGHT
12	STREET LIGHT
13	STREET LIGHT
14	STREET LIGHT
15	STREET LIGHT
16	STREET LIGHT
17	STREET LIGHT
18	STREET LIGHT
19	STREET LIGHT
20	STREET LIGHT
21	STREET LIGHT
22	STREET LIGHT
23	STREET LIGHT
24	STREET LIGHT
25	STREET LIGHT
26	STREET LIGHT
27	STREET LIGHT
28	STREET LIGHT
29	STREET LIGHT
30	STREET LIGHT
31	STREET LIGHT
32	STREET LIGHT
33	STREET LIGHT
34	STREET LIGHT
35	STREET LIGHT
36	STREET LIGHT
37	STREET LIGHT
38	STREET LIGHT
39	STREET LIGHT
40	STREET LIGHT
41	STREET LIGHT
42	STREET LIGHT
43	STREET LIGHT
44	STREET LIGHT
45	STREET LIGHT
46	STREET LIGHT
47	STREET LIGHT
48	STREET LIGHT
49	STREET LIGHT
50	STREET LIGHT
51	STREET LIGHT
52	STREET LIGHT
53	STREET LIGHT
54	STREET LIGHT
55	STREET LIGHT
56	STREET LIGHT
57	STREET LIGHT
58	STREET LIGHT
59	STREET LIGHT
60	STREET LIGHT
61	STREET LIGHT
62	STREET LIGHT
63	STREET LIGHT
64	STREET LIGHT
65	STREET LIGHT
66	STREET LIGHT
67	STREET LIGHT
68	STREET LIGHT
69	STREET LIGHT
70	STREET LIGHT
71	STREET LIGHT
72	STREET LIGHT
73	STREET LIGHT
74	STREET LIGHT
75	STREET LIGHT
76	STREET LIGHT
77	STREET LIGHT
78	STREET LIGHT
79	STREET LIGHT
80	STREET LIGHT
81	STREET LIGHT
82	STREET LIGHT
83	STREET LIGHT
84	STREET LIGHT
85	STREET LIGHT
86	STREET LIGHT
87	STREET LIGHT
88	STREET LIGHT
89	STREET LIGHT
90	STREET LIGHT
91	STREET LIGHT
92	STREET LIGHT
93	STREET LIGHT
94	STREET LIGHT
95	STREET LIGHT
96	STREET LIGHT
97	STREET LIGHT
98	STREET LIGHT
99	STREET LIGHT
100	STREET LIGHT

EXISTING UTILITIES SHOWN ARE APPROXIMATE AND CONDUIT SHALL BE INSTALLED TO THE LOCATION OF ALL PUBLIC AND PRIVATE UTILITIES PRIOR TO BEGINNING ANY CONSTRUCTION.

CALL BEFORE YOU DIG
 811 OR 1-800-4-A-DIG
 72 HOURS NOTICE REQUIRED.

PREPARED BY: **AXIS**
 ENGINEERING GROUP

COMCAST

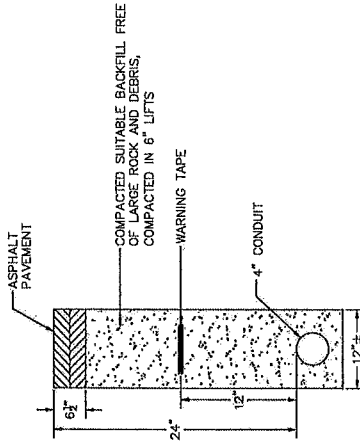
NO.	DESCRIPTION	DATE
1	CIC PROP CONDUIT PATH	7/6/21

TITLE: **PROPOSED CONDUIT INSTALLATION**

DESIGNED BY:	AXIS ENGINEERING GROUP	PROJECT NO.:	1903
DRAWN BY:	MS	SCALE:	1" = 10'
CHECKED BY:	MS	DATE:	7/22/21
IN CHARGE:	MS		

GENERAL NOTES

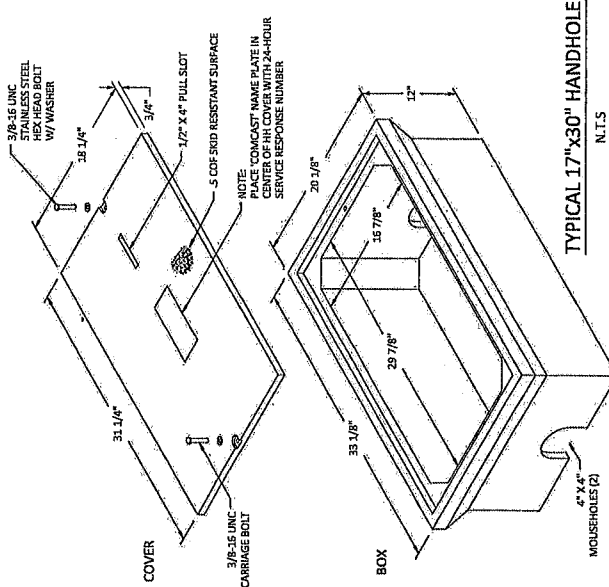
1. THE LOCATIONS OF EXISTING UNDERGROUND UTILITIES ARE SHOWN IN AN APPROXIMATE WAY ONLY AND HAVE NOT BEEN INDEPENDENTLY VERIFIED BY THE OWNER OR ITS REPRESENTATIVE. THE CONTRACTOR SHALL DETERMINE THE EXACT LOCATION OF ALL EXISTING UTILITIES BEFORE COMMENCING WORK, AND SHALL BE FULLY RESPONSIBLE FOR ANY AND ALL DAMAGES WHICH MIGHT BE OCCASIONED BY THE CONTRACTOR'S FAILURE TO EXACTLY LOCATE AND PRESERVE ANY AND ALL UNDERGROUND UTILITIES.
2. WHERE AN EXISTING UTILITY IS FOUND TO CONFLICT WITH THE PROPOSED WORK, THE LOCATION, ELEVATION AND SIZE OF THE UTILITY SHALL BE ACCURATELY DETERMINED WITHOUT DELAY BY THE CONTRACTOR, AND THE INFORMATION FURNISHED TO THE ENGINEER FOR RESOLUTION OF THE CONFLICT.
3. THE CONTRACTOR SHOULD MAINTAIN A SEPARATION OF 18 INCHES MIN. WHEN CROSSING EXISTING WATER FACILITIES.
4. THE CONTRACTOR SHALL MAKE ALL ARRANGEMENTS FOR THE ALTERATION AND ADJUSTMENT OF GAS, ELECTRIC, TELEPHONE AND ANY OTHER PRIVATE UTILITIES BY THE UTILITY COMPANY.
5. THE CONTRACTOR SHALL NOT DISTURB PUBLIC TREES AND SHRUBS.
6. AREAS OUTSIDE THE LIMITS OF PROPOSED WORK DISTURBED BY THE CONTRACTOR'S OPERATIONS SHALL BE RESTORED BY THE CONTRACTOR TO THEIR ORIGINAL CONDITION AT NO EXPENSE TO THE OWNER.
7. THE CONTRACTOR SHALL BE RESPONSIBLE FOR PLACING AND MAINTAINING TEMPORARY RESURFACING AND/OR PLATING FOR ALL EXCAVATIONS IN PAVED STREETS AND SIDEWALKS UNTIL PERMANENT RESURFACING IS COMPLETE.
8. JOINTS BETWEEN NEW BITUMINOUS CONCRETE ROADWAY PAVEMENT AND SAW CUT EXISTING PAVEMENT SHALL BE SEALED WITH BITUMEN AND BACK SANDED.
9. THE CONTRACTOR SHALL PROTECT AND SUPPORT ALL EXISTING UTILITY LINES THAT BECOME EXPOSED DUE TO EXCAVATION REQUIRED TO INSTALL THE PROPOSED CONDUIT.
10. THE CONTRACTOR SHALL REPLACE ALL DISTURBED TRAFFIC SIGNAL LOOP DETECTORS TO GOOD WORKING CONDITION AS REQUIRED BY THE LATEST STANDARDS OF THE MUNICIPAL TRAFFIC DEPARTMENT.
11. ALL EXISTING STATE, COUNTY, CITY, AND TOWN LOCATION LINES AND PRIVATE PROPERTY LINES HAVE BEEN ESTABLISHED FROM AVAILABLE INFORMATION AND THEIR EXACT LOCATION ARE NOT GUARANTEED.
12. THE CONTRACTOR SHALL REPLACE ALL PAVEMENT MARKINGS IN THEIR ENTIRETY THAT HAVE BEEN DAMAGED BY TRENCH EXCAVATION OR OPERATIONS OF THE CONTRACTOR WITH SIMILAR COLOR AND SIZE THERMOPLASTIC MARKINGS.



**ROADWAY PATCH AND DUCT BANK
INSTALLATION DETAIL**
N.T.S.

TRENCH DETAIL NOTES:

1. 24" MAXIMUM FROM TOP OF CONDUIT TO SURFACE.
2. 12" FROM TOP OF CONDUIT TO METALLIC WARNING TAPE PLACED ABOVE.
3. REPAIR SIDEWALKS AND WALKWAYS WITH SAME MATERIALS AS EXISTING.



TYPICAL 17"x30" HANDHOLE
N.T.S.

LEGEND	
1	EXISTING CONDUIT
2	NEW CONDUIT
3	EXISTING TRENCH
4	NEW TRENCH
5	EXISTING SIDEWALK
6	NEW SIDEWALK
7	EXISTING DRIVEWAY
8	NEW DRIVEWAY
9	EXISTING PAVEMENT
10	NEW PAVEMENT
11	EXISTING CURB
12	NEW CURB
13	EXISTING CONC. SIDEWALK
14	NEW CONC. SIDEWALK
15	EXISTING CONC. DRIVEWAY
16	NEW CONC. DRIVEWAY
17	EXISTING CONC. PAVEMENT
18	NEW CONC. PAVEMENT
19	EXISTING CONC. CURB
20	NEW CONC. CURB
21	EXISTING CONC. SIDEWALK
22	NEW CONC. SIDEWALK
23	EXISTING CONC. DRIVEWAY
24	NEW CONC. DRIVEWAY
25	EXISTING CONC. PAVEMENT
26	NEW CONC. PAVEMENT
27	EXISTING CONC. CURB
28	NEW CONC. CURB
29	EXISTING CONC. SIDEWALK
30	NEW CONC. SIDEWALK
31	EXISTING CONC. DRIVEWAY
32	NEW CONC. DRIVEWAY
33	EXISTING CONC. PAVEMENT
34	NEW CONC. PAVEMENT
35	EXISTING CONC. CURB
36	NEW CONC. CURB
37	EXISTING CONC. SIDEWALK
38	NEW CONC. SIDEWALK
39	EXISTING CONC. DRIVEWAY
40	NEW CONC. DRIVEWAY
41	EXISTING CONC. PAVEMENT
42	NEW CONC. PAVEMENT
43	EXISTING CONC. CURB
44	NEW CONC. CURB
45	EXISTING CONC. SIDEWALK
46	NEW CONC. SIDEWALK
47	EXISTING CONC. DRIVEWAY
48	NEW CONC. DRIVEWAY
49	EXISTING CONC. PAVEMENT
50	NEW CONC. PAVEMENT
51	EXISTING CONC. CURB
52	NEW CONC. CURB
53	EXISTING CONC. SIDEWALK
54	NEW CONC. SIDEWALK
55	EXISTING CONC. DRIVEWAY
56	NEW CONC. DRIVEWAY
57	EXISTING CONC. PAVEMENT
58	NEW CONC. PAVEMENT
59	EXISTING CONC. CURB
60	NEW CONC. CURB
61	EXISTING CONC. SIDEWALK
62	NEW CONC. SIDEWALK
63	EXISTING CONC. DRIVEWAY
64	NEW CONC. DRIVEWAY
65	EXISTING CONC. PAVEMENT
66	NEW CONC. PAVEMENT
67	EXISTING CONC. CURB
68	NEW CONC. CURB
69	EXISTING CONC. SIDEWALK
70	NEW CONC. SIDEWALK
71	EXISTING CONC. DRIVEWAY
72	NEW CONC. DRIVEWAY
73	EXISTING CONC. PAVEMENT
74	NEW CONC. PAVEMENT
75	EXISTING CONC. CURB
76	NEW CONC. CURB
77	EXISTING CONC. SIDEWALK
78	NEW CONC. SIDEWALK
79	EXISTING CONC. DRIVEWAY
80	NEW CONC. DRIVEWAY
81	EXISTING CONC. PAVEMENT
82	NEW CONC. PAVEMENT
83	EXISTING CONC. CURB
84	NEW CONC. CURB
85	EXISTING CONC. SIDEWALK
86	NEW CONC. SIDEWALK
87	EXISTING CONC. DRIVEWAY
88	NEW CONC. DRIVEWAY
89	EXISTING CONC. PAVEMENT
90	NEW CONC. PAVEMENT
91	EXISTING CONC. CURB
92	NEW CONC. CURB
93	EXISTING CONC. SIDEWALK
94	NEW CONC. SIDEWALK
95	EXISTING CONC. DRIVEWAY
96	NEW CONC. DRIVEWAY
97	EXISTING CONC. PAVEMENT
98	NEW CONC. PAVEMENT
99	EXISTING CONC. CURB
100	NEW CONC. CURB
101	EXISTING CONC. SIDEWALK
102	NEW CONC. SIDEWALK
103	EXISTING CONC. DRIVEWAY
104	NEW CONC. DRIVEWAY
105	EXISTING CONC. PAVEMENT
106	NEW CONC. PAVEMENT
107	EXISTING CONC. CURB
108	NEW CONC. CURB
109	EXISTING CONC. SIDEWALK
110	NEW CONC. SIDEWALK
111	EXISTING CONC. DRIVEWAY
112	NEW CONC. DRIVEWAY
113	EXISTING CONC. PAVEMENT
114	NEW CONC. PAVEMENT
115	EXISTING CONC. CURB
116	NEW CONC. CURB
117	EXISTING CONC. SIDEWALK
118	NEW CONC. SIDEWALK
119	EXISTING CONC. DRIVEWAY
120	NEW CONC. DRIVEWAY
121	EXISTING CONC. PAVEMENT
122	NEW CONC. PAVEMENT
123	EXISTING CONC. CURB
124	NEW CONC. CURB
125	EXISTING CONC. SIDEWALK
126	NEW CONC. SIDEWALK
127	EXISTING CONC. DRIVEWAY
128	NEW CONC. DRIVEWAY
129	EXISTING CONC. PAVEMENT
130	NEW CONC. PAVEMENT
131	EXISTING CONC. CURB
132	NEW CONC. CURB
133	EXISTING CONC. SIDEWALK
134	NEW CONC. SIDEWALK
135	EXISTING CONC. DRIVEWAY
136	NEW CONC. DRIVEWAY
137	EXISTING CONC. PAVEMENT
138	NEW CONC. PAVEMENT
139	EXISTING CONC. CURB
140	NEW CONC. CURB
141	EXISTING CONC. SIDEWALK
142	NEW CONC. SIDEWALK
143	EXISTING CONC. DRIVEWAY
144	NEW CONC. DRIVEWAY
145	EXISTING CONC. PAVEMENT
146	NEW CONC. PAVEMENT
147	EXISTING CONC. CURB
148	NEW CONC. CURB
149	EXISTING CONC. SIDEWALK
150	NEW CONC. SIDEWALK
151	EXISTING CONC. DRIVEWAY
152	NEW CONC. DRIVEWAY
153	EXISTING CONC. PAVEMENT
154	NEW CONC. PAVEMENT
155	EXISTING CONC. CURB
156	NEW CONC. CURB
157	EXISTING CONC. SIDEWALK
158	NEW CONC. SIDEWALK
159	EXISTING CONC. DRIVEWAY
160	NEW CONC. DRIVEWAY
161	EXISTING CONC. PAVEMENT
162	NEW CONC. PAVEMENT
163	EXISTING CONC. CURB
164	NEW CONC. CURB
165	EXISTING CONC. SIDEWALK
166	NEW CONC. SIDEWALK
167	EXISTING CONC. DRIVEWAY
168	NEW CONC. DRIVEWAY
169	EXISTING CONC. PAVEMENT
170	NEW CONC. PAVEMENT
171	EXISTING CONC. CURB
172	NEW CONC. CURB
173	EXISTING CONC. SIDEWALK
174	NEW CONC. SIDEWALK
175	EXISTING CONC. DRIVEWAY
176	NEW CONC. DRIVEWAY
177	EXISTING CONC. PAVEMENT
178	NEW CONC. PAVEMENT
179	EXISTING CONC. CURB
180	NEW CONC. CURB
181	EXISTING CONC. SIDEWALK
182	NEW CONC. SIDEWALK
183	EXISTING CONC. DRIVEWAY
184	NEW CONC. DRIVEWAY
185	EXISTING CONC. PAVEMENT
186	NEW CONC. PAVEMENT
187	EXISTING CONC. CURB
188	NEW CONC. CURB
189	EXISTING CONC. SIDEWALK
190	NEW CONC. SIDEWALK
191	EXISTING CONC. DRIVEWAY
192	NEW CONC. DRIVEWAY
193	EXISTING CONC. PAVEMENT
194	NEW CONC. PAVEMENT
195	EXISTING CONC. CURB
196	NEW CONC. CURB
197	EXISTING CONC. SIDEWALK
198	NEW CONC. SIDEWALK
199	EXISTING CONC. DRIVEWAY
200	NEW CONC. DRIVEWAY

AXIS ENGINEERING GROUP

Comcast

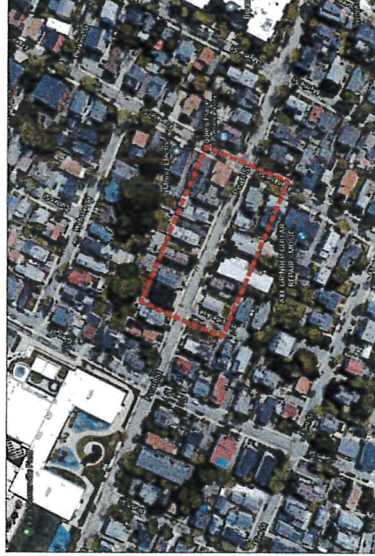
DATE: 7/6/21
PROJECT: CHS PROP CONDUIT PATH

GENERAL NOTES AND DETAILS

DATE: 7/6/21
SCALE: N.T.S.
PROJECT: CHS PROP CONDUIT PATH



**TRAFFIC MANAGEMENT PLAN
AT
75 PEARL ST
SOMERVILLE, MA**



LOCUS
N.T.S

INDEX OF DRAWING

SHEET NO.	DESCRIPTION
01	COVER SHEET TRAFFIC CONTROL

AXIS
ENGINEERING GROUP
201 Boston Post Rd West - Suite 100
Marlborough, MA 01752
(774) 556-2524 www.axisgroup.com

TRAFFIC CONTROL LEGEND

	TRAFFIC CONTROL
	WORK AREA
	POLICE DETAIL
	UTILITY WORK AREA

1" = 25'

LEGEND

X	TRAFFIC LIGHT
1	CONSTRUCTION SIGN
2	CONSTRUCTION SIGN
3	CONSTRUCTION SIGN
4	CONSTRUCTION SIGN
5	CONSTRUCTION SIGN
6	CONSTRUCTION SIGN
7	CONSTRUCTION SIGN
8	CONSTRUCTION SIGN
9	CONSTRUCTION SIGN
10	CONSTRUCTION SIGN
11	CONSTRUCTION SIGN
12	CONSTRUCTION SIGN
13	CONSTRUCTION SIGN
14	CONSTRUCTION SIGN
15	CONSTRUCTION SIGN
16	CONSTRUCTION SIGN
17	CONSTRUCTION SIGN
18	CONSTRUCTION SIGN
19	CONSTRUCTION SIGN
20	CONSTRUCTION SIGN
21	CONSTRUCTION SIGN
22	CONSTRUCTION SIGN
23	CONSTRUCTION SIGN
24	CONSTRUCTION SIGN
25	CONSTRUCTION SIGN
26	CONSTRUCTION SIGN
27	CONSTRUCTION SIGN
28	CONSTRUCTION SIGN
29	CONSTRUCTION SIGN
30	CONSTRUCTION SIGN
31	CONSTRUCTION SIGN
32	CONSTRUCTION SIGN
33	CONSTRUCTION SIGN
34	CONSTRUCTION SIGN
35	CONSTRUCTION SIGN
36	CONSTRUCTION SIGN
37	CONSTRUCTION SIGN
38	CONSTRUCTION SIGN
39	CONSTRUCTION SIGN
40	CONSTRUCTION SIGN
41	CONSTRUCTION SIGN
42	CONSTRUCTION SIGN
43	CONSTRUCTION SIGN
44	CONSTRUCTION SIGN
45	CONSTRUCTION SIGN
46	CONSTRUCTION SIGN
47	CONSTRUCTION SIGN
48	CONSTRUCTION SIGN
49	CONSTRUCTION SIGN
50	CONSTRUCTION SIGN

NOTE:
 REMAINING FOR USE - THE CONTRACTOR SHALL BE RESPONSIBLE FOR THE PROTECTION OF ALL UTILITIES AND STRUCTURES. THE CONTRACTOR SHALL BE RESPONSIBLE FOR THE PROTECTION OF ALL UTILITIES AND STRUCTURES. THE CONTRACTOR SHALL BE RESPONSIBLE FOR THE PROTECTION OF ALL UTILITIES AND STRUCTURES.

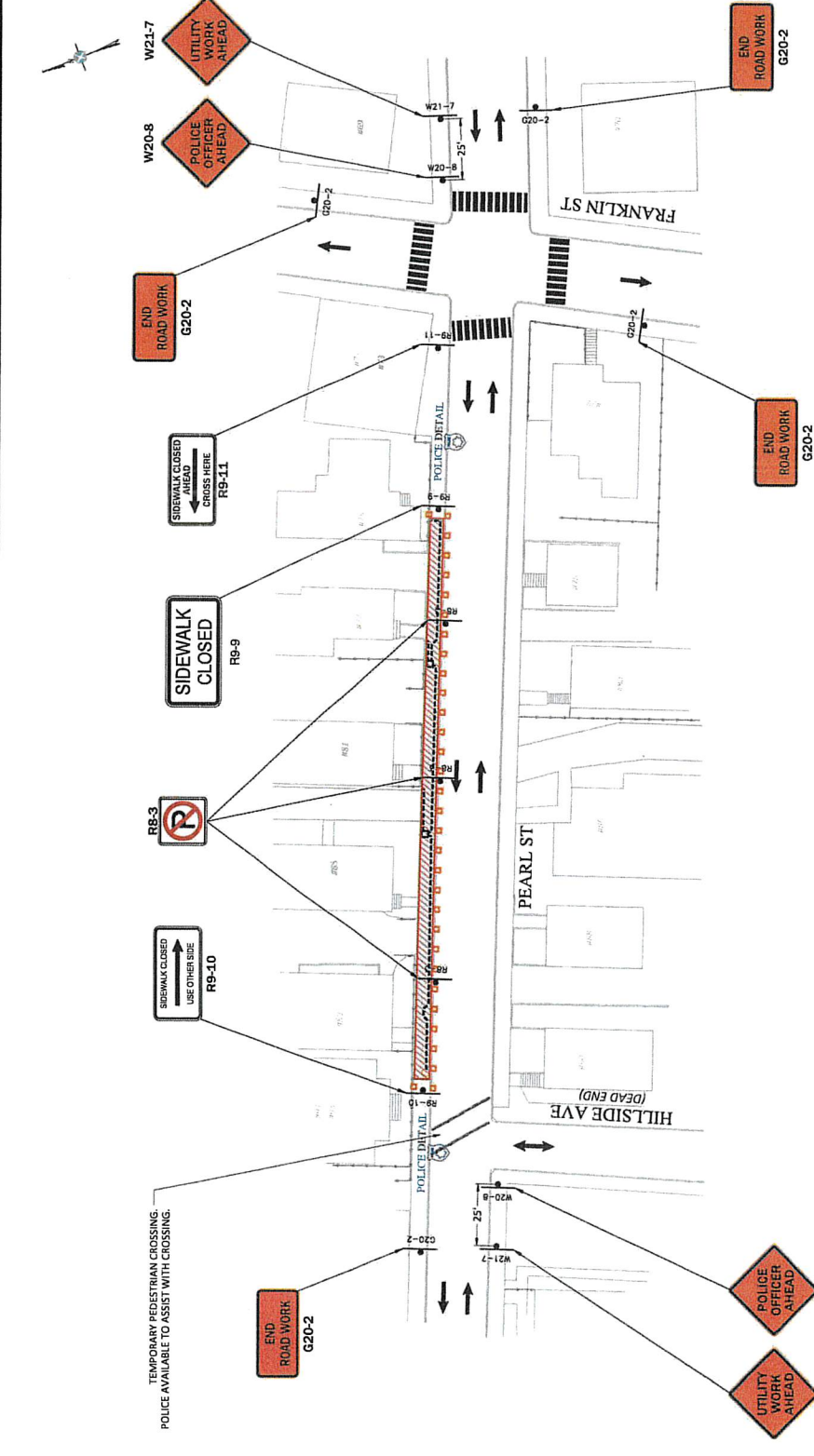
CALL BEFORE YOU DIG
 UNDERGROUND SERVICE ALERT
 1-800-4-A-SHIELD
 1-800-4-ASK-4-SAFE

PROVISED BY:
AXIS
 ENGINEERING GROUP

PREPARED BY:
Comcast

DATE	DESCRIPTION

TRAFFIC CONTROL
 PROJECT NO. 101
 SHEET NO. 1-10



Traffic Management Notes:

- Place all safety devices and construction signing before actual construction work.
- Use flags on advanced warning signs. Flags shall be at least 15" x 16".
- Use reflective sheeting on all signs and on all traffic control devices.
- No traffic control devices shall remain on the roadway at the end of each workday.
- Use reflective sheeting on all signs and on all traffic control devices.
- All drums shall be placed appropriately or moved as necessary to maintain adequate abuttor access at all times. Contractor must place traffic controls and leave road plates on abuttor access at all times.
- Maintain travel lanes of minimum 11' width at all times for emergency vehicles.
- Temporary No Parking signs must be installed at least 48 hours prior to occupying the street.
- Temporary No Parking signs are installed. No Parking signs can only be installed for a one week in any work zone.
- Contractor must have a copy of an approved TMP at the job site at all times. All signage and traffic control devices must be installed as indicated on the TMP.

75-91 PEARL ST
SOMERVILLE, MA

Map	Bloc	Lot	Stree	Co grantees Name	Mailing Address	City	St Zip	Use						
Map	Cut	Bloc	Cut	Lot	Numbe	Location	Grantee	Co grantees Name	Mailing Address	City	St Zip	Code	Use	Descr
91	H	17	75	PEARL ST			PEREZ JOSE S & IGNACIA		75 PEARL ST	SOMERVILLE	MA 02145	MA 02145	1040	TWO FAMILY
91	H	18	77	PEARL ST			MONIZ MARIA & JOSEPH		33 FRANKLIN ST	SOMERVILLE	MA 02145	MA 02145	1040	TWO FAMILY
91	H	19	81	PEARL ST			RESENDES MARIA TRUSTEE	RESENDES FAMILY TRUST	81 PEARL ST	SOMERVILLE	MA 02145	MA 02145	1040	TWO FAMILY
91	H	20	85	PEARL ST			WONG LISA TRUSTEE	THURSTON REALTY TRUST	747 WASHINGTON ST	BROOKLINE	MA 02445	MA 02445	1050	THREE FAM
91	H	21	89	PEARL ST			FARIA CARLOS	SANTANA VENILDE	80 PEARL ST	SOMERVILLE	MA 02145	MA 02145	1050	THREE FAM
91	H	22	91	PEARL ST			PINCKNEY-PEARL REALTY LLC		PO BOX 45354	SOMERVILLE	MA 02145	MA 02145	112C	AFT OVER 8