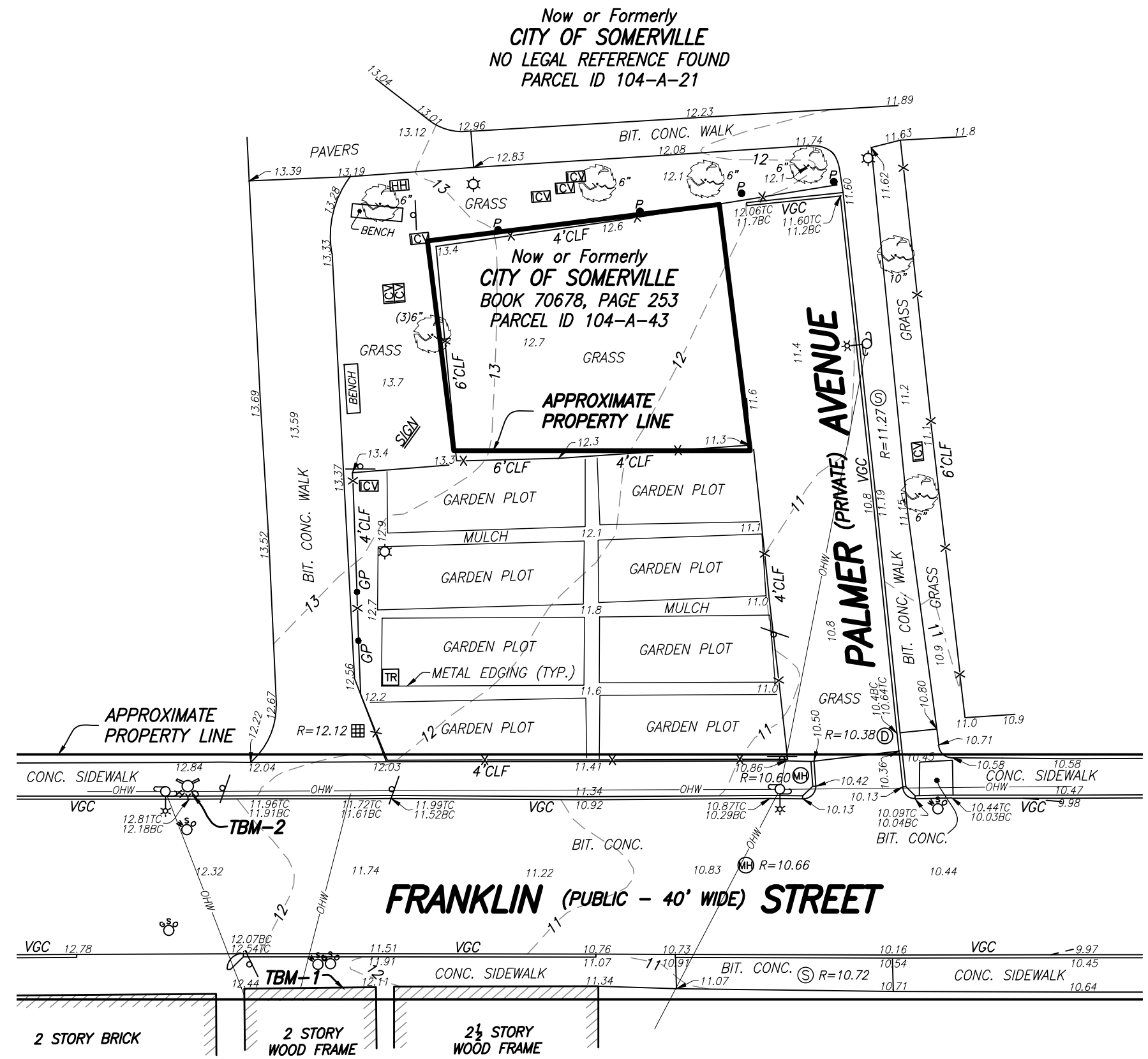


MASSACHUSETTS STATE PLANE
COORDINATE SYSTEM
NAD 1983



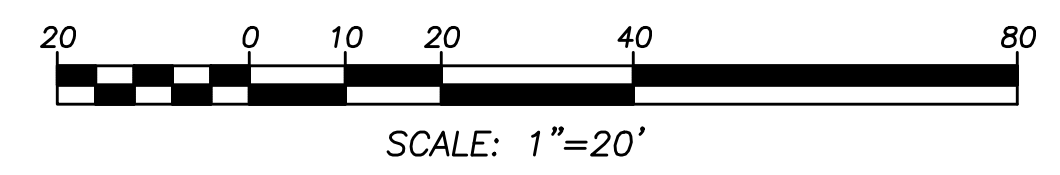
- LEGEND**
- ⊙ SEWER MANHOLE
 - ⊕ DRAIN MANHOLE
 - ⊗ MANHOLE
 - ⊕ HYDRANT
 - ⊕ WATER SHUT OFF/WATER GATE
 - ⊕ GAS SHUT OFF/GAS GATE
 - ⊕ CATCH BASIN
 - ⊕ LIGHT POLE
 - ⊕ ELECTRIC HANDHOLE
 - ⊕ POST
 - ⊕ SIGN
 - ⊕ UTILITY POLE W/ LIGHT
 - ⊕ TRASH RECEPTACLE
 - ⊕ DECIDUOUS TREE
 - ⊕ IRRIGATION CONTROL VALVE
 - BC BOTTOM OF CURB
 - BIT BITUMINOUS
 - CLF CHAIN LINK FENCE
 - CONC CONCRETE
 - R= RIM ELEVATION
 - TBM TEMPORARY BENCH MARK
 - TC TOP OF CURB
 - VGC VERTICAL GRANITE CURB
 - OHW — OVERHEAD WIRES

- NOTES:**
- BENCH MARK INFORMATION:
ELEVATIONS WERE ESTABLISHED BY GPS OBSERVATIONS ON JULY 9, 2021.
TEMPORARY BENCH MARKS SET:
TBM-1: RIGHT OUTER CORNER OF THE LOWEST BRICK STEP AT #76 FRANKLIN STREET, AS SHOWN HEREON. ELEVATION=13.05
TBM-2: FRONT CENTER BONNET BOLT ON A HYDRANT ON THE NORTHWESTERLY SIDE OF FRANKLIN STREET, AS SHOWN HEREON. ELEVATION=15.23
 - ELEVATIONS REFER TO NORTH AMERICAN VERTICAL DATUM OF 1988 (NAVD 88).
 - CONTOUR INTERVAL EQUALS ONE (1) FOOT.
 - THIS DOCUMENT IS AN INSTRUMENT OF SERVICE OF FELDMAN LAND SURVEYORS ISSUED TO OUR CLIENT FOR PURPOSES RELATED DIRECTLY AND SOLELY TO FELDMAN LAND SURVEYORS' SCOPE OF SERVICES UNDER CONTRACT TO OUR CLIENT FOR THIS PROJECT. ANY USE OR REUSE OF THIS DOCUMENT FOR ANY REASON BY ANY PARTY FOR PURPOSES UNRELATED DIRECTLY AND SOLELY TO SAID CONTRACT SHALL BE AT THE USER'S SOLE AND EXCLUSIVE RISK AND LIABILITY, INCLUDING LIABILITY FOR VIOLATION OF COPYRIGHT LAWS, UNLESS WRITTEN CONSENT IS PROVIDED BY FELDMAN LAND SURVEYORS.
 - APPROXIMATE PROPERTY LINES SHOWN HEREON WERE TAKEN FROM A PLAN RECORDED AT THE MIDDLESEX SOUTH REGISTRY OF DEEDS IN PLAN BOOK 228, PLAN 32. THIS PLAN DOES NOT REPRESENT A BOUNDARY SURVEY AND SHOULD NOT BE RELIED ON FOR THAT PURPOSE.

**TOPOGRAPHIC PLAN
5 PALMER AVENUE
SOMERVILLE, MASS.**

FELDMAN LAND SURVEYORS
152 HAMPDEN STREET
BOSTON, MASS. 02119

JULY 14, 2021
PHONE: (617)357-9740
www.feldmansurveyors.com



I CERTIFY THAT THIS PLAN IS BASED ON AN ACTUAL FIELD SURVEY.

PROGRESS 7-23-2021

TIMOTHY R. AGURKIS, PLS (MA# 52782) DATE
TRA@FELDMANSURVEYORS.COM

RESEARCH MJB	FIELD CHIEF CB	PROJ MGR MJB	APPROVED	SHEET NO. 1 OF 1
CALC MJB	CADD MJB	FIELD CHECKED	CRD FILE 17186	JOB NO. 18176

FILENAME: S:\PROJECTS\18100\18176\DWG\18176-TOPO.dwg