



**CITY OF SOMERVILLE**

Commonwealth of Massachusetts  
93 Highland Avenue  
Somerville, MA 02143  
(617) 625-6600

**BUSINESS LICENSE APPLICATION - Grant of Location**

File #: 20-019353

License #: BL20-000160

Address: 5 MIDDLESEX AVE

Licensee: Hayleigh Walker Siena Engineering Group Inc.

DBA Name: TC Systems Inc

Business Ownership Type: Corporation

Legal Name of Entity: TC Systems, Inc.

Owners/Officers: , , ,

**License Information:**

**Grant of location issued to:** TC Systems, Inc

**Describe the reason for the work, and the intended beneficiaries:** This work is to provide service to customers in the area

**Insert here the same detailed description of the work as appears in the attached Grant of Location Order:** The installation shall begin at the existing Frit manhole (with Verizon Lid) located on Assembly Square Drive and extend to where it reaches the existing Extenet Handhole located on Revolution Drive; a total distance of approx. 458 ft. This installation will also include the placement of one intermediate handhole

Approval Conditions:

**Approved By:**

**Karla Cuarezma, Approved**

**Malik Drayton, Approved with Conditions**

APPROVAL CONDITION: MD20201123: Contractor shall take all necessary precautions to avoid damaging any tree or tree part with equipment.

APPROVAL CONDITION: MD20201123: All nearby street tree(s) shall be protected prior to and during all construction activities using TREE BOX or TREE WRAPS. . TREE BOX shall be constructed from 2 in. x 4 in. lumber creating a box around the border of the tree pit with 2 in. x 4 in. lumber standing straight up at the corners and wrapped with orange snow fence. Detail attached. . TREE WRAPS (TREE TRUNK WRAPPING PROTECTION LUMBER) shall consist of 2 in. x 4 in. and 8 ft. height lumber wired together in close spacing with zip ties or 16 gauge galvanized steel wire to form a protective enclosure around tree trunks. Use burlap to separate the wood from the bark if necessary to prevent

wood from scraping or bruising bark. Do not use staples or puncture the trunk in any way.  
APPROVAL CONDITION: MD20201123: Any tree roots less than two (2) inches in diameter that cannot be avoided during construction shall be carefully and cleanly cut with a clean pair of pruning shears or loppers. Roots are to be cut back flush with the edge of the trench. If any tree roots greater than two (2) inches in diameter are encountered, stop work immediately and contact the City Urban Forester. Any and all pruning of roots greater than 2 inches in diameter must be completed under the supervision of the City Urban Forester.

**Mark Lawhorne, Approved**

**John J. Long, Approved**



CITY OF SOMERVILLE, MASSACHUSETTS  
CITY CLERK'S OFFICE  
JOSEPH A. CURTATONE  
MAYOR

JOHN J. LONG  
City Clerk

December 2, 2020

**NOTICE OF PUBLIC HEARING**

You are hereby notified that the Somerville City Council will hold a Public Hearing on the following Petition. You are receiving this Notice because the Petitioner has reported that you own property that abuts the work that is being proposed. You and other members of the public are invited to attend and be heard at this Hearing.

Because of Governor Baker's and Mayor Curtatone's recent orders limiting the number of people that may gather in one place, **this meeting of the City Council will be conducted via remote participation, online in a webinar hosted on the GoToWebinar platform.**

You have two ways to be heard at this meeting:

1. To attend and be heard, enter the link exactly as it appears below into your internet browser anytime before the meeting. You will then be asked to register for the meeting. After registering, you will receive an email with instructions to join the webinar when it starts.
2. If you are unable to attend but wish to be heard, you may send written comments by US mail to the City Clerk at the address below, or by email to [cityclerk@somervillema.gov](mailto:cityclerk@somervillema.gov). Your comments must arrive no later than 12 Noon on the day of the Hearing, in order to be sure they are conveyed to the Council.

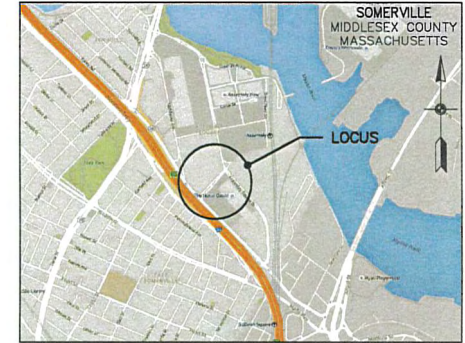
**PETITION:** TC Systems Inc seeks a Grant of Location to install a total of 458 feet of conduit as follows: Starting from existing manhole in Grand Union Bouvelard, 456 feet to a proposed handhole located on Revolution Drive then continuing 2 feet to Extenet handhole.

**PLACE:** <https://attendee.gotowebinar.com/register/6538853236358803471>

**TIME:** Thursday, December 10, 2020, at 7:00 PM.

**PURPOSE:** The work is necessary to provide or improve service to the surrounding area.

**TC SYSTEMS, INC**  
An Affiliate of  **AT&T**



LOCUS MAP  
NOT TO SCALE

# PROPOSED CONDUIT PLACEMENT REVOLUTION DRIVE AT GRAND UNION BOULEVARD SOMERVILLE, MASSACHUSETTS

CONDUIT CONSTRUCTION PLANS  
MIDDLESEX COUNTY  
NOVEMBER 16, 2020  
PERMIT ISSUE

**PRELIMINARY**  
NOT FOR CONSTRUCTION

**SIENA**  
ENGINEERING GROUP INC.  
50 Mall Road, Suite 203, Burlington, MA 01803  
p 781.221.8400 f 781.221.7117

SIENA ENGINEERING GROUP, INC.  
 18-14300 Node 9 Revolution Drive FRIT.dwg  
 Edited: November 16, 2020 - 3:13 PM  
 Plotted: November 17, 2020 - 11:07 AM by Joseph commier -  
 Siena EB

## LIST OF DRAWINGS

	COVER
PT001	LIST OF DRAWINGS
PT002	LEGEND & REFERENCES
DN001	PROPOSED CONDUIT PLACEMENT PLAN
DT001	TYPICAL TRENCH & SURFACE RESTORATION DETAILS
DT002	CONCRETE HANDHOLE DETAILS

ISSUE DATE	INITIALS
1, NOVEMBER 16, 2020 PERMIT 2020	JCC

**PRELIMINARY**  
NOT FOR CONSTRUCTION

NOTES:



Call before you dig.

**AT&T PROPRIETARY**  
(Internal Use Only)

Not for disclosure outside the AT&T companies, except under written agreement.

2016 AT&T Intellectual Property. All Rights Reserved

**AT&T PROPRIETARY**-This information constitutes confidential trade secrets and commercial or financial information owned by AT&T and is shared for Critical Infrastructure Protection purposes only. It is exempt from disclosure under the Freedom of Information Act (5 U.S.C. 552), Exemptions (b)(3)&(4), and its disclosure is prohibited under the Trade Secrets Act.

(18 U.S.C. 1855), the Critical Infrastructure Information Act of 2002, 6 U.S.C. 133, and any State or local law requiring disclosure of information or records. This information must not be copied or distributed to others not approved upon by AT&T, but in all events do not copy or distribute to such others without notification pursuant to Executive Order 12859.

PREPARED FOR RECORD

APPROVED FOR OUTSIDE PLANT	ENGINEER	DATE

**TC SYSTEMS, INC**  
An Affiliate of AT&T



**PROPRIETARY**  
USE PURSUANT TO COMPANY INSTRUCTIONS

SPECIFICATION  
PROJECT NUMBER

OWNERSHIP:  
LINE CODE:  
CABLE CLU:

SCALE:

REVOLUTION DRIVE AT  
GRAND UNION BOULEVARD  
SOMERVILLE, MA

LIST OF DRAWINGS

PT001

## PLANIMETRIC SYMBOL LEGEND

UP ○ UTILITY POLE HYD ○ 2-NOZZLE FIRE HYDRANT ✕ WATER GATE SMH ○ SEWER MANHOLE DMH ○ DRAIN MANHOLE CB □ CATCH BASIN TMH ○ TELEPHONE MANHOLE VZ MH ○ VERIZON MANHOLE ⊗ STONE BOUND W/ DRILL HOLE ⊥ SIGN	○ DECIDUOUS TREE ✕ STREET LIGHT IRHH □ IRRIGATION HANDHOLE EHH □ ELECTRIC HANDHOLE MAHH □ MASS HIGHWAY HANDHOLE SLHH □ STREET LIGHT HANDHOLE PM ● PARKING METER FA ○ FIRE ALARM EOUT ○ ELECTRIC OUTLET SWTB □ STORMWATER TREATMENT BASIN TSCC ⊗ TRAFFIC SIGNAL CONTROL CABINET	
---	--	--

## LINETYPE LEGEND

	OVERHEAD WIRES
	BURIED ELECTRIC LINE
	BURIED TELEPHONE LINE
	BURIED CABLE TV LINE
	SANITARY SEWER LINE
	STORM DRAIN LINE
	WATER LINE
	GAS LINE
	PROPERTY LINE
	RIGHT-OF-WAY LINE
	PROPOSED BURIED CONDUIT

## REFERENCES & NOTES

1. ELECTRIC UTILITY INFORMATION PER RECORD PLANS PROVIDED BY EVERSOURCE.
2. TELECOM UTILITY INFORMATION PER RECORD PLANS PROVIDED BY VERIZON, AT&T, COMCAST & LIGHTTOWER.
3. GAS UTILITY INFORMATION PER RECORD PLANS PROVIDED BY EVERSOURCE.
4. WATER, SEWER & DRAIN UTILITY INFORMATION PER RECORD PLANS PROVIDED BY CITY OF SOMERVILLE.

SIENA ENGINEERING GROUP, INC.  
 18-14300 Node 9 Revolution Drive FRIT.dwg  
 Edited: November 16, 2020 - 3:13 PM  
 Plotted: November 17, 2020 - 11:07 AM by Joseph Conner -  
 Siena.scb

ISSUE DATE: 1, NOVEMBER 16, 2020 PERMIT ISSUE	INITIALS: JCC
---	------------------

**PRELIMINARY  
NOT FOR CONSTRUCTION**

NOTES:



Call before you dig.

**AT&T PROPRIETARY**  
(Internal Use Only)

Not for disclosure outside the AT&T companies, except under written agreement.

2016 AT&T Intellectual Property, All Rights Reserved

AT&T PROPRIETARY-This information constitutes confidential trade secrets and commercial or financial information owned by AT&T and is shared for Critical Infrastructure Protection purposes only. It is exempt from disclosure under the Freedom of Information Act (5 U.S.C. 552), Exemptions (b)(3)(A)-(D), and its disclosure is prohibited under the Trade Secrets Act.

(18 U.S.C. 1865), the Critical Infrastructure Information Act of 2002, 5 U.S.C. 133, and any State or local law requiring disclosure of information or records. This information must not be copied or distributed to others not approved upon by AT&T, but in all events do not copy or distribute to such others without notification pursuant to Executive Order 12958.

PREPARED FOR RECORD

APPROVED FOR	ENGINEER	DATE
OUTSIDE PLANT		

**TC SYSTEMS, INC**  
An Affiliate of AT&T



**PROPRIETARY**  
USE PURSUANT TO COMPANY INSTRUCTIONS

SPECIFICATION

PROJECT NUMBER

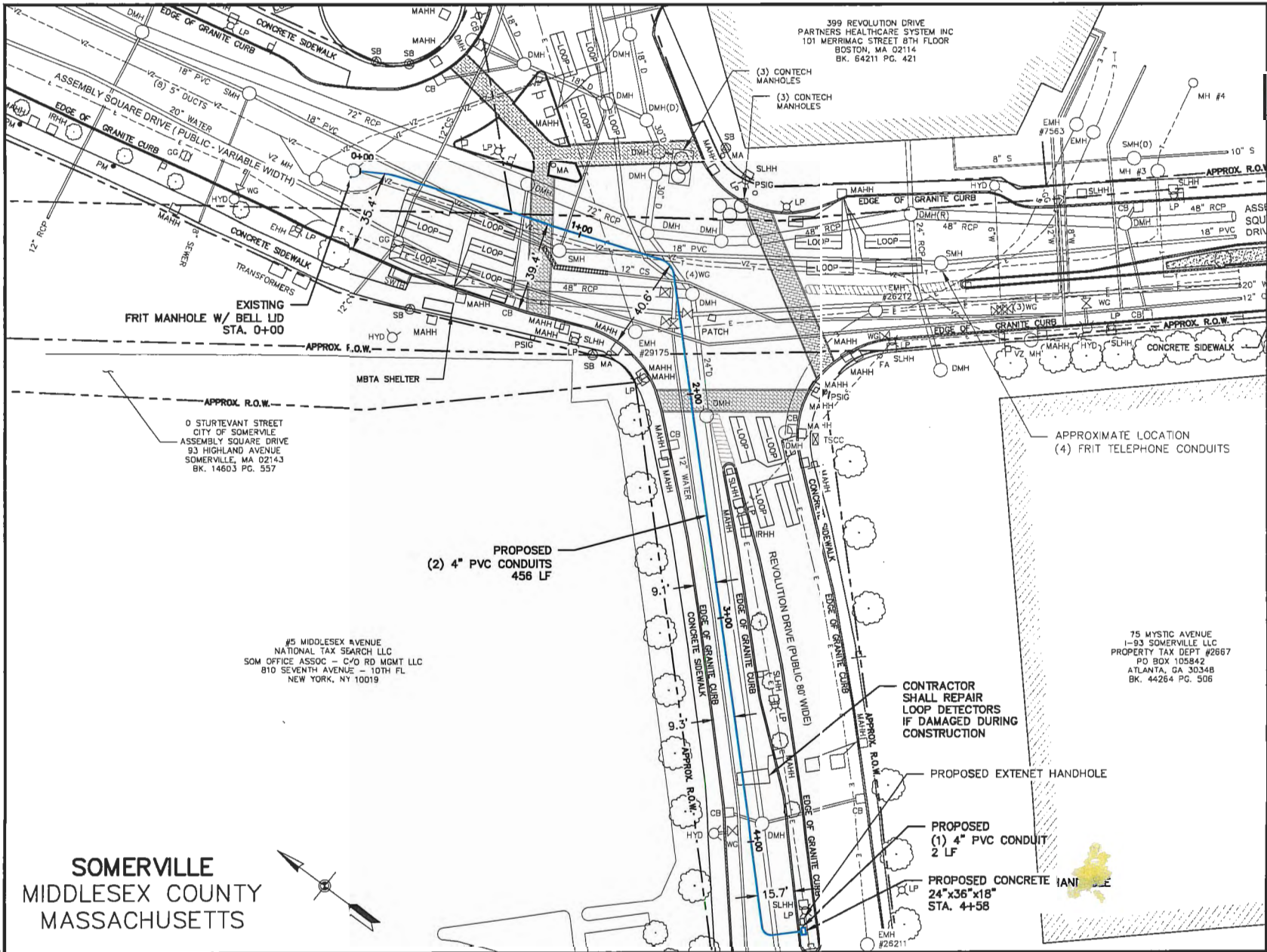
OWNERSHIP:  
LINE CODE:  
CABLE CLLI:

SCALE:

REVOLUTION DRIVE AT  
GRAND UNION BOULEVARD  
SOMERVILLE, MA

LEGEND & REFERENCES

PT002

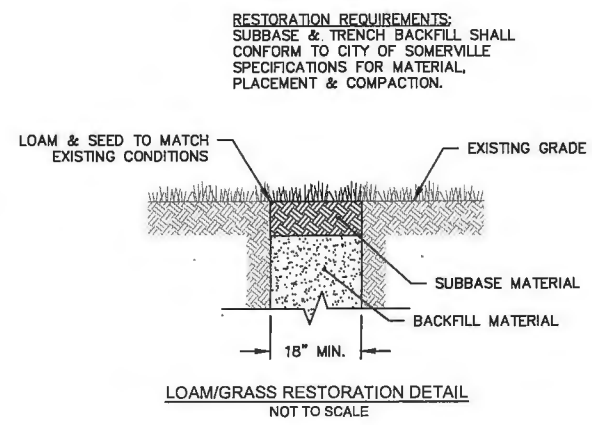
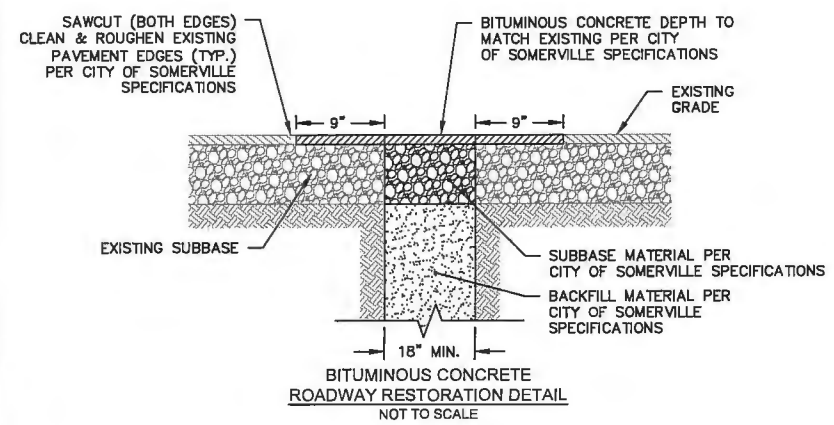
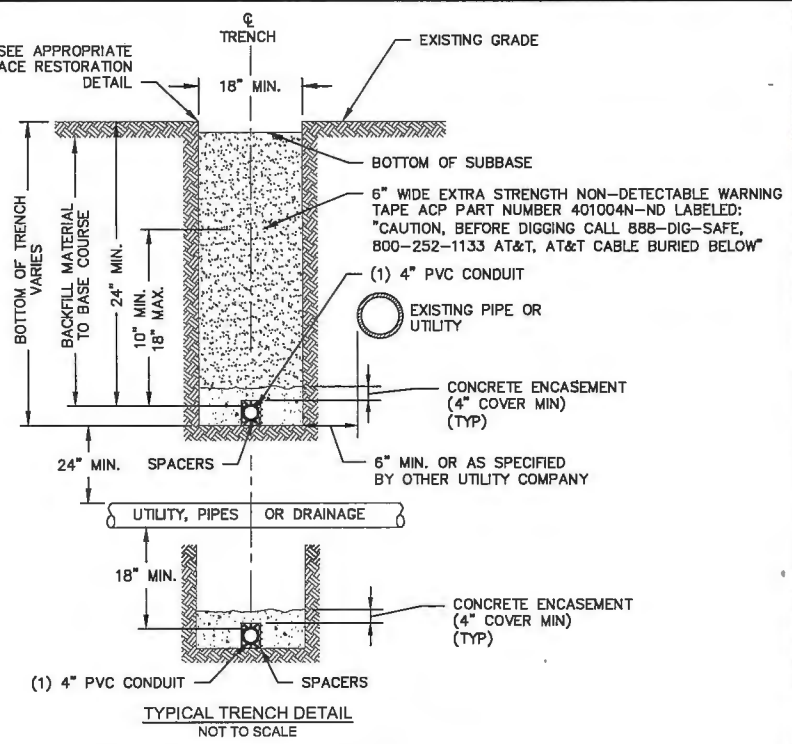
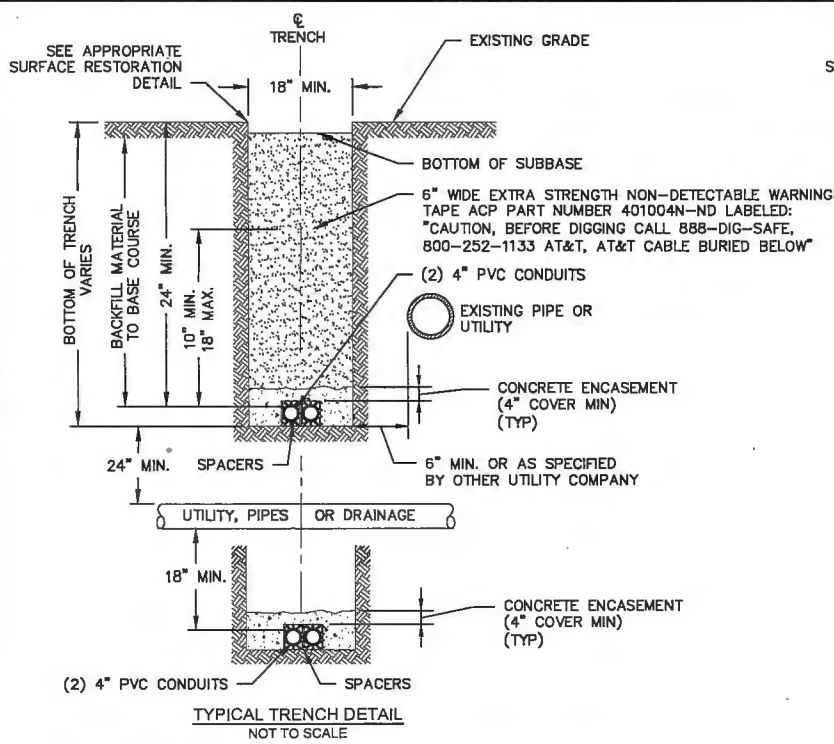


<b>ISSUE DATE:</b> 1. NOVEMBER 16, 2020 PERMIT ISSUE	<b>INITIALS:</b> ICC
<b>PRELIMINARY NOT FOR CONSTRUCTION</b>	
<p>3. SUBSURFACE UTILITY LINES, AS SHOWN HEREON, WERE OBTAINED ACCORDING TO STANDARD RECORDING PRACTICES. THE RECORDED LOCATIONS ARE APPROXIMATE ONLY. ACTUAL LOCATIONS MUST BE DETERMINED BY THE FIELD. SIENA ENGINEERING GROUP ASSUMES NO RESPONSIBILITY FOR DAMAGES INCURRED AS A RESULT OF UTILITIES OMITTED OR INACCURATELY SHOWN.</p>	
<b>811</b>	
<b>Call before you dig.</b>	
<b>AT&amp;T PROPRIETARY</b> (Internal Use Only)	
Not for disclosure outside the AT&T companies, except under written agreement.	
2020 AT&T Intellectual Property, All Rights Reserved.	
<p>AT&amp;T PROPRIETARY: This information constitutes confidential trade secrets and commercial or financial information owned by AT&amp;T and is shared for Critical Infrastructure Protection purposes only. It is exempt from disclosure under the Freedom of Information Act (5 U.S.C. 552). Exemptions (b)(3)(A) and its disclosure is prohibited under the Trade Secrets Act.</p> <p>18 U.S.C. 1905; the Critical Infrastructure Information Act of 2002, 6 U.S.C. 133, and any State or local law requiring disclosure of information or reports. This information must not be copied or distributed to others not approved upon by AT&amp;T, but in all events do not copy or distribute to such others without notification pursuant to Executive Order 12958.</p>	
<b>PREPARED FOR RECORD</b>	
APPROVED FOR OUTSIDE PLANT	DATE
<b>TC SYSTEMS, INC</b> An Affiliate of <b>AT&amp;T</b>	
<b>SIENA</b> ENGINEERING GROUP	
<p>PLANTING (MAY) USE HANDBOOK TO COMPANY INSTRUCTIONS</p> <p>SPECIFICATION PROJECT NUMBER OWNERSHIP: LINE CODE: CABLE CLL:</p>	
SCALE: 1"=40'	
<b>REVOLUTION DRIVE AT GRAND UNION BOULEVARD SOMERVILLE, MA</b>	
<b>PROPOSED CONDUIT PLACEMENT PLAN</b>	
<b>DN001</b>	

SIENA ENGINEERING GROUP, INC.  
 19-14300 Node 9 Revolution Drive Frit.dwg  
 Edited: November 16, 2020 - 3:13 PM  
 Plotted: November 17, 2020 - 11:07 AM by Joseph Conner -  
 siena.scb

**SOMERVILLE  
MIDDLESEX COUNTY  
MASSACHUSETTS**





**RESTORATION REQUIREMENTS:**  
SUBBASE & TRENCH BACKFILL SHALL CONFORM TO CITY OF SOMERVILLE SPECIFICATIONS FOR MATERIAL, PLACEMENT & COMPACTION.

ISSUE DATE: 1, NOVEMBER 16, 2020 PERMIT  
INITIALS: JCC

**PRELIMINARY**  
NOT FOR CONSTRUCTION

NOTES:



Call before you dig.

**AT&T PROPRIETARY**  
(Internal Use Only)

Not for disclosure outside the AT&T companies, except under written agreement.

2016 AT&T Intellectual Property. All Rights Reserved

AT&T PROPRIETARY-This information constitutes confidential trade secrets and commercial or financial information owned by AT&T and is shared for Critical Infrastructure Protection purposes only. It is exempt from disclosure under the Freedom of Information Act (5 U.S.C. 552), Exemptions (b)(3)(A), and its disclosure is prohibited under the Trade Secrets Act (18 U.S.C. 1835), the Critical Infrastructure Information Act of 2002, 6 U.S.C. 133, and any State or local law requiring disclosure of information or records. This information must not be copied or distributed to others not agreed upon by AT&T, but in all events do not copy or distribute to such others without notification pursuant to Executive Order 13262.

PREPARED FOR RECORD  
APPROVED FOR: ENGINEER DATE

TC SYSTEMS, INC  
An Affiliate of AT&T

**SIENA**  
Siena Engineering Group, Inc.

PROPRIETARY  
USE PURSUANT TO COMPANY INSTRUCTIONS

SPECIFICATION  
PROJECT NUMBER

OWNERSHIP:  
LINE CODE  
CABLE CLLI

SCALE: AS NOTED

REVOLUTION DRIVE AT  
GRAND UNION BOULEVARD  
SOMERVILLE, MA

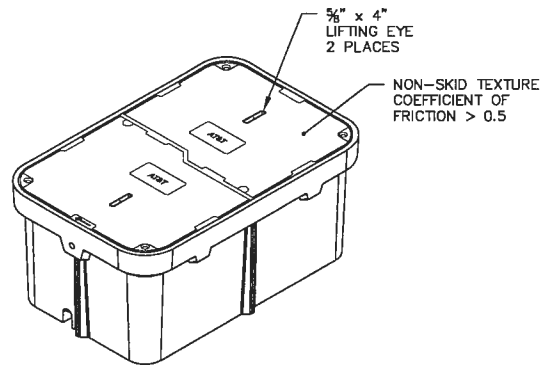
TYPICAL TRENCH & SURFACE  
RESTORATION DETAILS

DT001

SIENA ENGINEERING GROUP, INC.  
18-14300 Node 9 Revolution Drive FRIT.dwg  
Edited: November 15, 2020 - 3:13 PM  
November 17, 2020 - 11:07 AM by Joseph Conner -  
Sienna.cb



SIENA ENGINEERING GROUP, INC.  
 18-14300 Node 9 Revolution Drive FRT.dwg  
 Edited: November 16, 2020 - 11:13 PM  
 Created: November 17, 2020 - 11:07 AM by Joseph Conner -  
 Siema.sxb



TYPICAL HANDHOLE DETAIL - 24"x36"x18"  
 NOT TO SCALE

**NOTES:**

1. HANDHOLES INSTALLED IN ACCORDANCE WITH THE LATEST REVISION OF TC SYSTEMS (TCB) STANDARD SPECIFICATIONS FOR OUTSIDE CABLE CONSTRUCTION AND REMOVAL .
2. HANDHOLE SECTIONS PROPERLY ALIGNED AND FREE OF DIRT AND STONES WHEN JOINED.
3. HANDHOLE RACKING CONFORMS WITH TC SYSTEMS (TCB) SPECIFICATIONS.
4. SPLICE HANDHOLES INCLUDE AC/DC FILTER PROTECTION PER AT&T SPECIFICATIONS.
5. HANDHOLE MATERIAL IS POLYMER CONCRETE.
6. HANDHOLE MANUFACTURED BY OLDCASTLE ENCLOSURE SOLUTIONS, 801 S. PINE ST., MADERA, CA 96367 1-800-486-7070. UNIT, PC2436-18.

ISSUE DATE:	INITIALS:
1, NOVEMBER 16, 2020 PERMIT	JCC
SS-P	

**PRELIMINARY**  
 NOT FOR CONSTRUCTION

**NOTES:**



Call before you dig.

**AT&T PROPRIETARY**  
 (Internal Use Only)

Not for disclosure outside the AT&T companies, except under written agreement.

2016 AT&T Intellectual Property. All Rights Reserved

AT&T PROPRIETARY-This information constitutes confidential trade secrets and commercial or financial information owned by AT&T and is shared for Critical Infrastructure Protection purposes only. It is exempt from disclosure under the Freedom of Information Act (5 U.S.C. 552), Exemptions (b)(3)(A)-(D), and its disclosure is prohibited under the Trade Secrets Act.

18 U.S.C. 1955, the Critical Infrastructure Information Act of 2002, 6 U.S.C. 133, and any State or local law requiring disclosure of information or records. This information must not be copied or distributed to others not agreed upon by AT&T, but in all events do not copy or distribute to such others without notification pursuant to Executive Order 12958.

PREPARED FOR RECORD  
 APPROVED FOR: \_\_\_\_\_ ENGINEER DATE \_\_\_\_\_  
 OUTSIDE PLANT

TC SYSTEMS, INC  
 An Affiliate of AT&T



PROPRIETARY  
 USE PURSUANT TO COMPANY INSTRUCTIONS

SPECIFICATION  
 PROJECT NUMBER

OWNERSHIP:  
 LINE CODE:  
 CABLE CLI:

SCALE: AS NOTED

REVOLUTION DRIVE AT  
 GRAND UNION BOULEVARD  
 SOMERVILLE, MA

CONCRETE HANDHOLE DETAIL

DT002

5 MIDDLESEX AVE IMMEDIATE ABUTTERS  
SOMERVILLE, MA

Map	Blo	Lot	Stree	Grantee	Co grantee-s Name	Mailing Address	City	St Zip	Use	
Map	Cut Bloc	Cut Lot	Cut Unit Alternate	Numbe Location					Code Use Descri	
88	A	1		5	MIDDLESEX AVE	CDNV ASSEMBLY LLC	C/O CRESSET DEVELOPMENT L 120 WATER ST FIFTH FLOOR	BOSTON	MA 02109	3400 OFFICE BLD
88	A	4		5	MYSTIC AVE	I-93 SOMERVILLE LLC	PROPERTY TAX DEPT #2667 PO BOX 105842	ATLANTA	GA 30348	3210 HRDWARE ST
99	A	9	OFFI 18 21	391	REVOLUTION DR	PARTNERS HEALTH CARE SYSTEM IN	C/O ALTUS GROUP PO BOX 92129	SOUTHLAKE	TX 76092	957C CHARITABLE
99	A	9	RETA 18 21	391	REVOLUTION DR	STREET RETAIL INC	C/O FEDERAL REALTY INVEST 909 ROSE AVE, SUITE 200	NORTH BETHESDA	MD 20852	3270 RETAIL CND
99	A	13		300-3	GRAND UNION BLVD	SRI ASSEMBLY ROW B7 LLC	C/O FEDERAL REALTY INVEST 909 ROSE AVE, SUITE 200	NORTH BETHESDA	MD 20852	3370 PARK LOT
99	A	15		20	FOLEY ST	CDNV LAND LLC	C/O FEDERAL REALTY INVEST 909 ROSE AVENUE, SUITE 200	NORTH BETHESDA	MD 20852	3400 OFFICE BLD