

200408
10f2

N/F BOSTON & MAINE
RAILROAD

111.01'

ELINE OFF FENCE IN FIELD

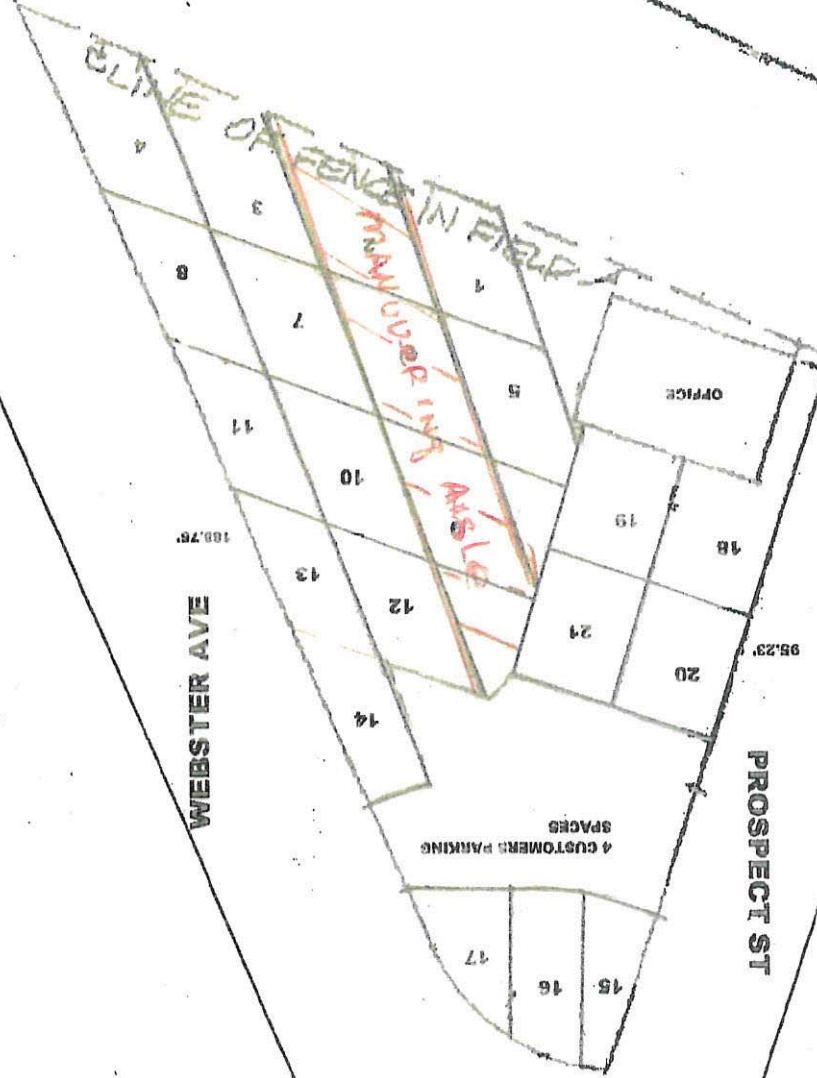
MANAGED IN
FIELD

OFFICE

WEBSTER AVE

PROSPECT ST

4 CUSTOMERS PARKING
SPACES



200408
20f2

John Long

From: Suzanne Rinfret
Sent: Tuesday, December 22, 2015 3:51 PM
To: John Long
Cc: Terence Smith
Subject: RE: Webster Auto Sales plot plan
Attachments: Webster Auto.pdf

Hi John,

I spoke with Terry regarding the plan he would recommend a maneuvering aisle for the parking of vehicles at Webster Auto Sales. See attached. With the maneuvering aisle there would be parking spaces for 18 vehicles.

Please let me know if you have any questions.

Thank you,

Suzanne

Suzanne Rinfret
Traffic and Parking
City of Somerville
133 Holland Street
Somerville, MA 02144
W: (617) 625-6600 ext.7910
srinfret@somervillema.gov
Somerville

