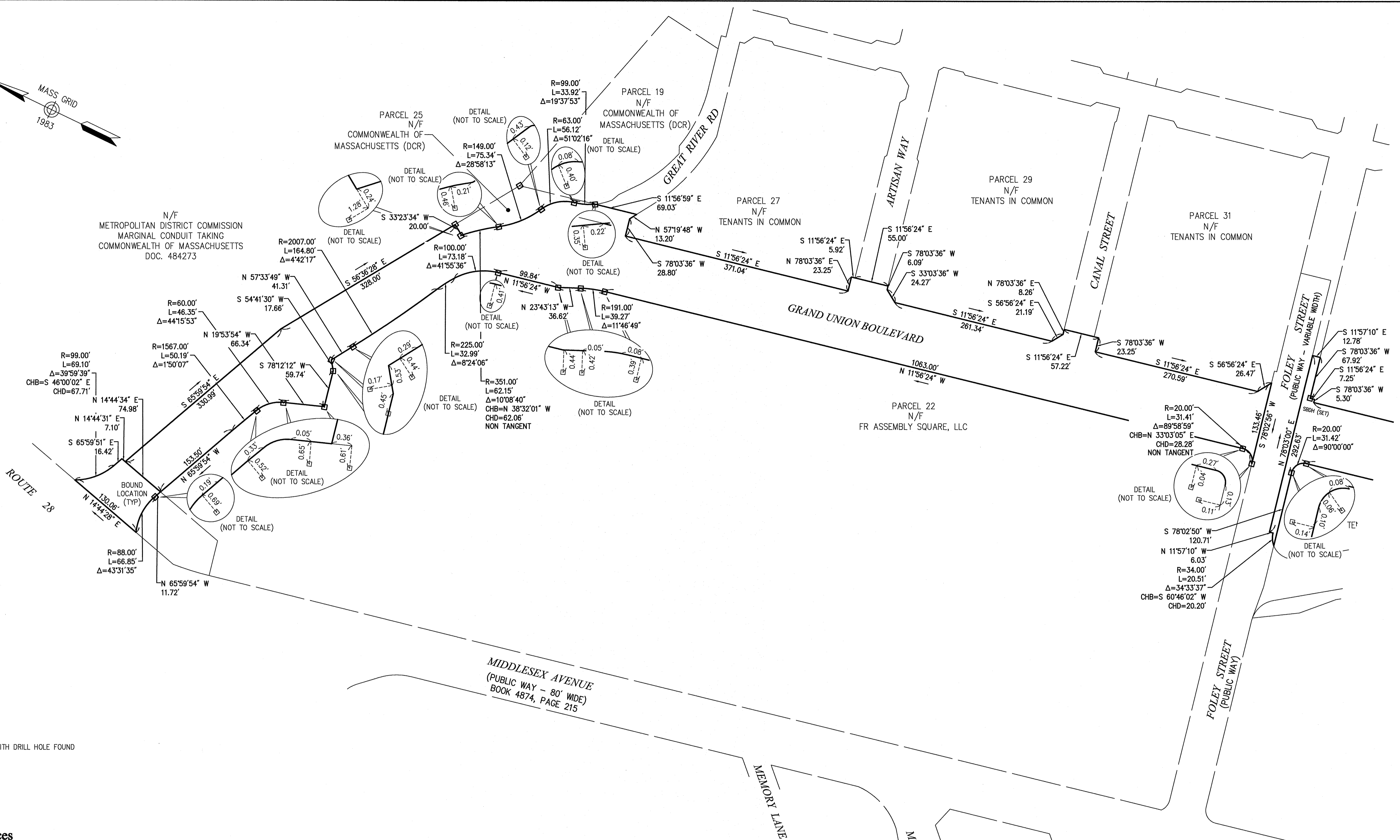


RESERVED FOR REGISTRY USE ONLY



☐ STONE BOUND WITH DRILL HOLE FOUND

Plan References

1. PLAN ENTITLED "PERMANENT HIGHWAY EASEMENT PLAN OF LAND IN SOMERVILLE MA", SCALE 1"=80', JULY 20, 2009 PREPARED BY VANASSE HANGEN BRUSTLIN, INC., PLAN 27 OF 2010.
2. PLAN ENTITLED "SUBDIVISION PLAN OF LAND IN SOMERVILLE MASSACHUSETTS" SCALE 1"=40', JULY 18, 2012. PREPARED BY VANASSE HANGEN BRUSTLIN, INC. PLAN 733 OF 2012.
3. PLAN ENTITLED "SUBDIVISION PLAN OF LAND IN SOMERVILLE MASSACHUSETTS" SCALE 1"=60', MARCH 16, 2011, REV. JULY 12, 2011, PLAN 812 OF 2011.+
4. PLAN ENTITLED "SUBDIVISION PLAN OF LAND IN SOMERVILLE MASSACHUSETTS" SCALE 1"=40', NOVEMBER 18, PLAN 880 OF 2011.

General Notes

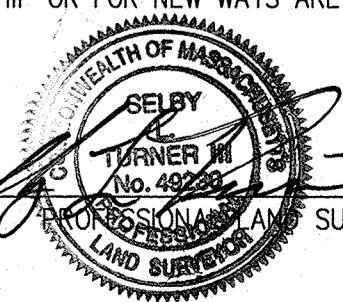
1. THE PROPERTY LINES SHOWN ON THIS PLAN ARE BASED UPON AN ACTUAL FIELD SURVEY CONDUCTED BY VANASSE HANGEN BRUSTLIN, INC. IN MARCH 2004 AND FROM DEEDS AND PLANS OF RECORD.
2. THESE PLANS (SHEETS 1 AND 2) AMEND THE JULY 20, 2009 PLANS (SHEETS 1 AND 2) TO SHOW THE AMENDED LAYOUT LOCATION.

Certification

I HEREBY CERTIFY THAT THIS PLAN WAS PREPARED IN ACCORDANCE WITH THE RULES AND REGULATIONS OF THE REGISTERS OF DEEDS OF THE COMMONWEALTH OF MASSACHUSETTS.

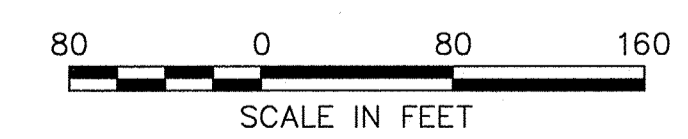
I HEREBY CERTIFY THAT THIS PLAN SHOWS THE PROPERTY LINES THAT ARE THE LINES OF EXISTING OWNERSHIP'S, AND THE LINES OF STREETS AND WAYS SHOWN ARE THOSE OF PUBLIC OR PRIVATE STREETS OR WAYS ALREADY ESTABLISHED, AND THAT NO NEW LINES FOR DIVISION OF EXISTING OWNERSHIP OR FOR NEW WAYS ARE SHOWN. (MASS. GEN. LAWS CHAPTER 41, SEC. 81-X)

3/14/2016
DATE: _____
SURVEYOR



BOARD OF ALDERMEN

DATE: _____



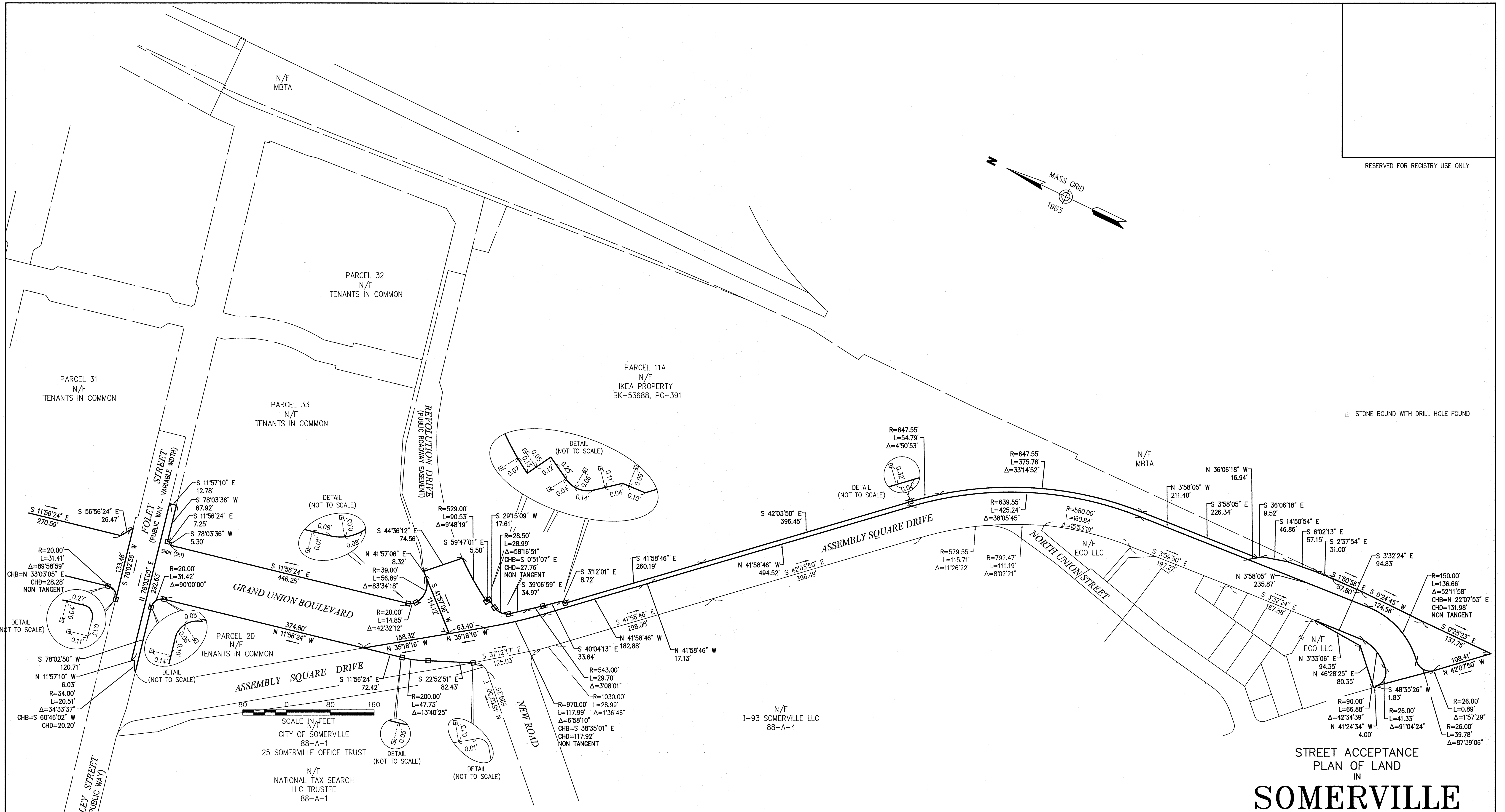
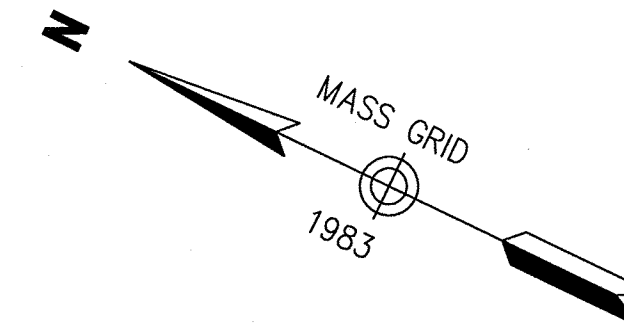
STREET ACCEPTANCE
PLAN OF LAND
IN
SOMERVILLE
MASSACHUSETTS

PREPARED FOR: FR RETAIL, INC.

PREPARED BY: Vanasse Hangen Brustlin, Inc.
Transportation, Land Development &
Environmental Services
101 Walnut Street, P.O. Box 9151
Watertown, MA 02471-9151
(617) 924-1770

SCALE: 1 INCH = 80 FEET DATE: FEBRUARY 4, 2016
SHEET 1 OF 2

RESERVED FOR REGISTRY USE ONLY



STONE BOUND WITH DRILL HOLE FOUND

SCALE IN FEET
CITY OF SOMERVILLE
88-A-1
25 SOMERVILLE OFFICE TRUST
N/F
NATIONAL TAX SEARCH
LLC TRUSTEE
88-A-1

Plan References

1. PLAN ENTITLED "PERMANENT HIGHWAY EASEMENT PLAN OF LAND IN SOMERVILLE MA", SCALE 1"=80', JULY 20, 2009 PREPARED BY VANASSE HANGEN BRUSTLIN, INC., PLAN 27 OF 2010.
2. PLAN ENTITLED "SUBDIVISION PLAN OF LAND IN SOMERVILLE MASSACHUSETTS" SCALE 1"=40', JULY 18, 2012. PREPARED BY VANASSE HANGEN BRUSTLIN, INC. PLAN 733 OF 2012.
3. PLAN ENTITLED "SUBDIVISION PLAN OF LAND IN SOMERVILLE MASSACHUSETTS" SCALE 1"=60', MARCH 16, 2011, REV. JULY 12, 2011, PLAN 812 OF 2011.+
4. PLAN ENTITLED "SUBDIVISION PLAN OF LAND IN SOMERVILLE MASSACHUSETTS" SCALE 1"=40', NOVEMBER 18, PLAN 880 OF 2011.

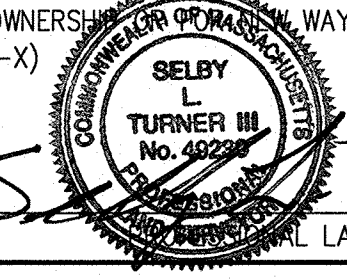
Certification

I HEREBY CERTIFY THAT THIS PLAN WAS PREPARED IN ACCORDANCE WITH THE RULES AND REGULATIONS OF THE REGISTERS OF DEEDS OF THE COMMONWEALTH OF MASSACHUSETTS.

I HEREBY CERTIFY THAT THIS PLAN SHOWS THE PROPERTY LINES THAT ARE THE LINES OF EXISTING OWNERSHIP'S, AND THE LINES OF STREETS AND WAYS SHOWN ARE THOSE OF PUBLIC OR PRIVATE STREETS OR WAYS ALREADY ESTABLISHED, AND THAT NO NEW LINES FOR DIVISION OF EXISTING OWNERSHIP OR WAYS ARE SHOWN. (MASS. GEN. LAWS CHAPTER 41, SEC. 81-X)

General Notes

1. THE PROPERTY LINES SHOWN ON THIS PLAN ARE BASED UPON AN ACTUAL FIELD SURVEY CONDUCTED BY VANASSE HANGEN BRUSTLIN, INC. IN MARCH 2004 AND FROM DEEDS AND PLANS OF RECORD.
2. THESE PLANS (SHEETS 1 AND 2) AMEND THE JULY 20, 2009 PLANS (SHEETS 1 AND 2) TO SHOW THE AMENDED LAYOUT LOCATION.



DATE 3/14/2016

BOARD OF ALDERMEN

DATE: _____

STREET ACCEPTANCE
PLAN OF LAND
IN
SOMERVILLE
MASSACHUSETTS

PREPARED FOR: FR RETAIL, INC.

PREPARED BY: Vanasse Hangen Brustlin, Inc.
Transportation, Land Development &
Environmental Services
101 Walnut Street, P.O. Box 9151
Watertown, MA 02471-9151
(617) 924-1770

SCALE: 1 INCH = 80 FEET DATE: FEBRUARY 4, 2016
SHEET 2 OF 2